

CONTAINER ENERGY STORAGE Energy Storage



- **Safer**

Cobalt Free Lithium Iron Phosphate (LFP) Battery, safety and long lifespan, high efficiency and high-energy density. Built-in Intelligent BMS, providing complete protection.

- **Reliable**

IP65, integrated fire protection device; hot and cold air conditioner + fan cooling device, intelligent adjustment of internal temperature, wide temperature range: -30°C to 60°C, support outdoor installation. Large capacity integrated, 306 or 510kWh capacity optional.

- **Smart:**

Equipped with BMS management system, voltage, current, temperature collection, intelligent adjustment of charge and discharge power. EMS intelligently monitors the entire cabinet integrated system status.

- **Cooperation**

Supports customization, OEM/ODM.

- **Quality Assurance**

Five years free warranty, additional five years of technical support.



Technical Parameters

Model	306kWh	510kWh
Main Parameter		
Cell Chemistry	LiFePO4	
Module Energy	10.24(kWh)	
Module Nominal Voltage	51.2 (V)	
Module Capacity	200(Ah)	
Module Dimension	383*605*240(W/D/H,mm)	
Module Weight Approximate	77(kg)	
Battery Module Qty In Series	10*3(Optional)	10*5(Optional)
System Nominal Voltage	512(V)	512(V)
System Operating Voltage	464~576(V)	464~576(V)
System Energy	307.2(kWh)	512(kWh)
System Usable Energy	276.48 (90%DOD)(kWh)	460.8 (90%DOD)(kWh)
Charge/Discharge Current	Recommend: 80(A) Max: 100(A)	
Working Temperature	-30~60(°C)	
Cooling Mode	Air Conditioner	
Communication Port	CAN/RS485/Ethernet	
Humidity	5%~95%RH	
Altitude	≤3000m	
IP Rating of Enclosure	IP65	
Dimension	4991*1253*2591(W/D/H,mm)	4991*2691*2591(W/D/H,mm)
Weight Approximate	2600 (kg)	4200 (kg)
Installation Location	Integrated cabinet Installation	
Storage Temperature	0~35(°C)	
Recommend Depth of Discharge	0.9	
Cycle Life	≥6000 times	
Warranty	5+5 years	
Certification	UN38.3,MSDS	
The current is affected by temperature and SOC		

HIGH VOLTAGE WIFI MONITORING



MODEL: (ALL BATTERY WITH PACE BMS)

Together with our BMS supplier UDAN, we developed a battery-built-in WiFi monitoring device that supports local Bluetooth and WiFi remote connection methods.

Support switching between Chinese and English.

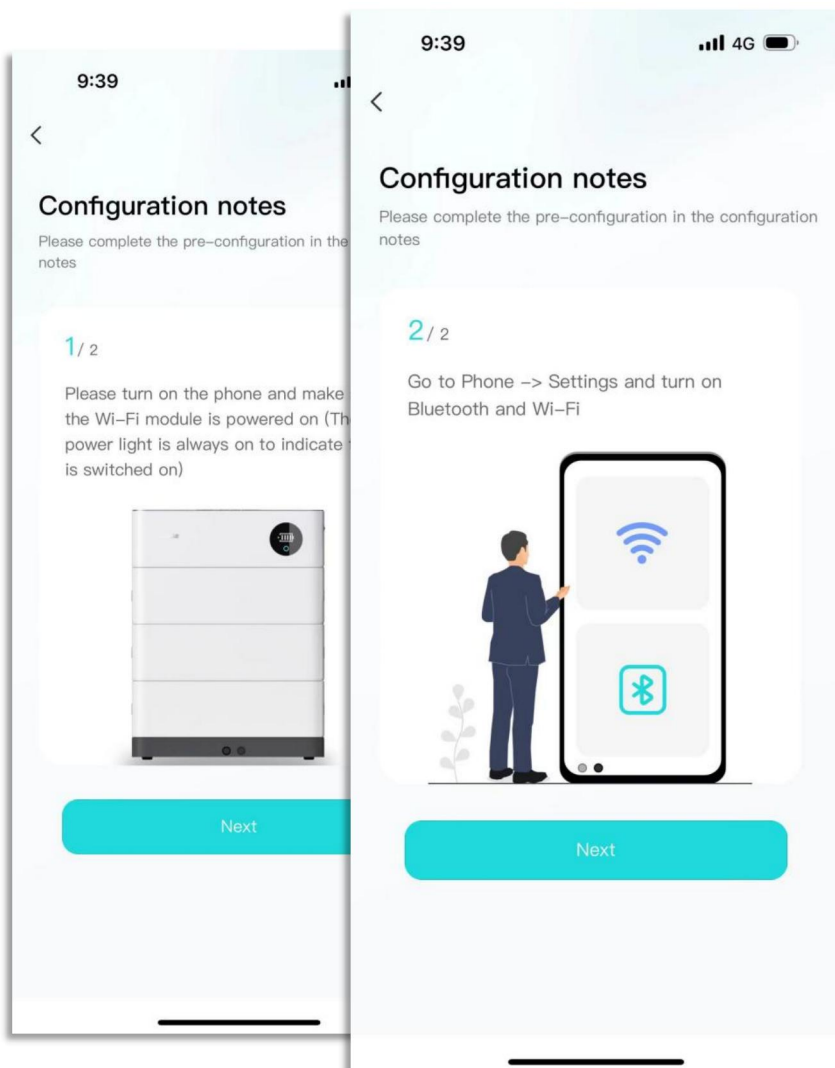
Preparation before distribution:

Ensure that the device is on, turn on the mobile phone Bluetooth and wireless LAN functions.

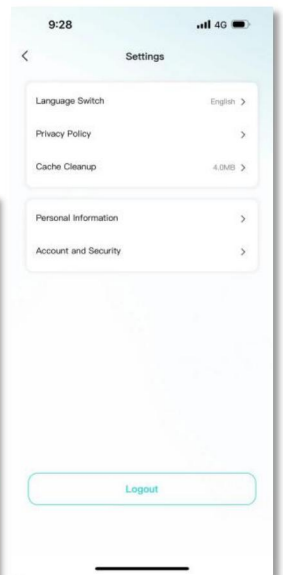
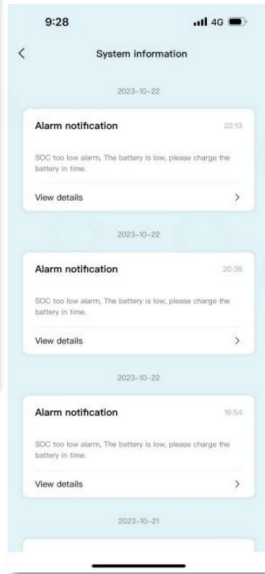
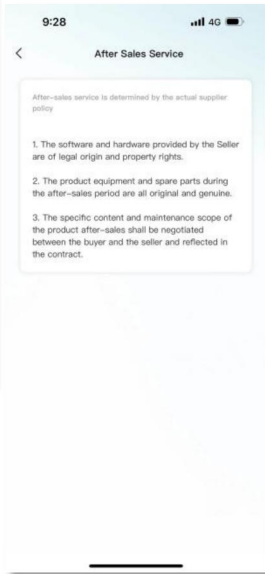
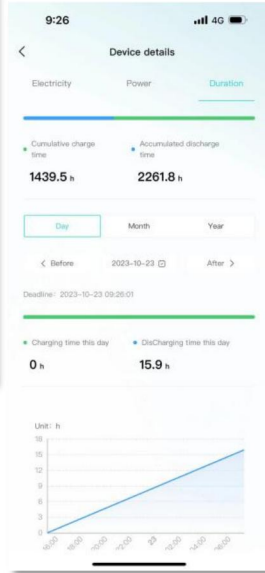
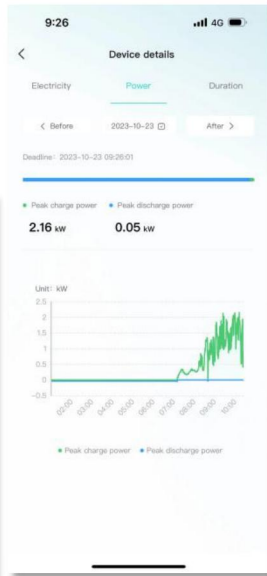
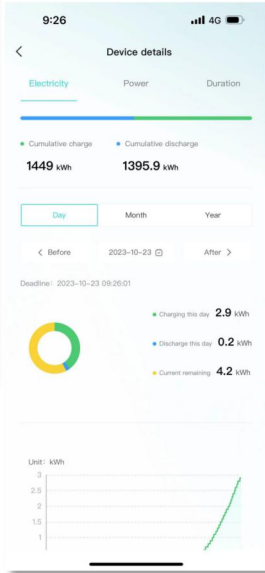
Connected devices: The current App supports Bluetooth search, device scanning, and manual input of SN code .

Connect to WiFi: After the device is connected, enter the WiFi connection process.

- Select the WiFi you want to use and click the "Connect" button. Enter the WiFi password and click the "Finish" button to distribute the network.



APP INTERFACE DISPLAY



COMMUNICATION SUPPORT INVERTER

Low Voltage

Deye 德業®

GROWATT
古 瑞 瓦 特

SGFAR

solis

Afore

NEXT
Next Power

MEGAREVO

SUMRY

LU X POWER^{TEK}

SOROTEC®
Power Solutions Expert

TBB POWER

SRNE 碩日

GOODWE

Voltronic Power
Advancing Power



High Voltage

GROWATT
古 瑞 瓦 特

SGFAR

GOODWE

ATESS

MEGAREVO

Afore

KOYOE

solis

Deye 德業®

LU X POWER^{TEK}

