

# ELESHELL 10.2K-HV HV Wall-Mounted/Floor Energy Storage



- **Safer**

Cobalt Free Lithium Iron Phosphate (LFP) Battery, safety and long lifespan, high efficiency and high-energy density. Built-in Intelligent BMS, providing complete protection.

- **Beautiful**

Home design style, all-in-one design, thin type can stick to the wall, beautiful and generous.

- **Smart**

Built-in voltage boost module, a single battery can boost 16 series of battery cells 51.2V to 384V, to meet three-phase hybrid system needs with small capacity energy storage and saving energy storage costs..

- **Convenient**

Floor mounting or wall mounting is available, Max. 16units in parallel. Simple steps for capacity expansion and convenient product maintenance.

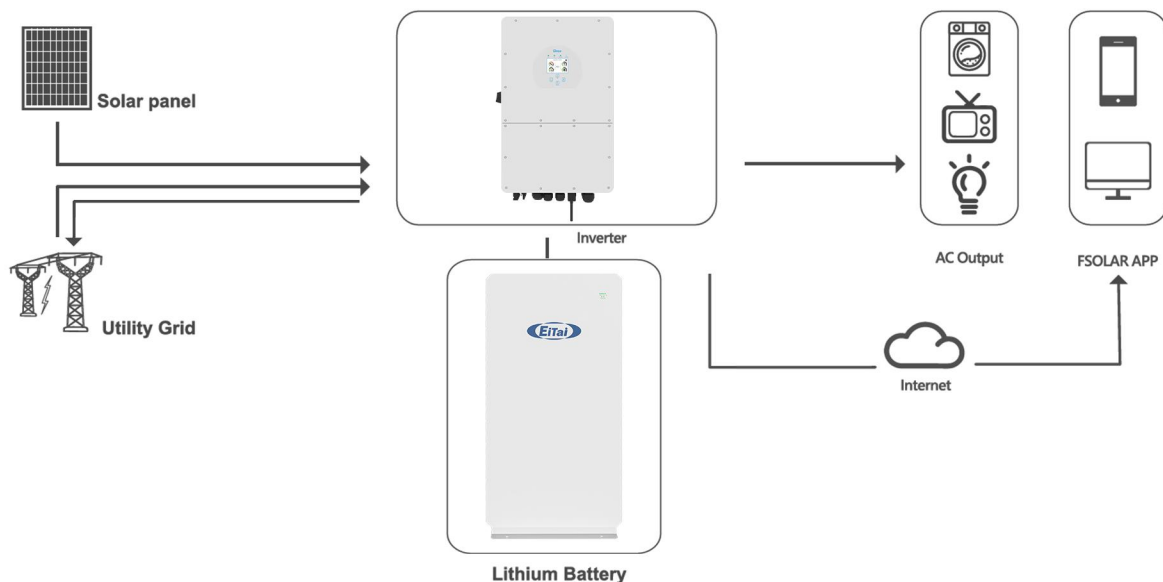
- **Quality Assurance**

Five years free warranty, additional five years of technical support.

# Technical Parameters

Model	ELESHELL 10.2K-HV
Main Parameter	
Battery Chemistry	LiFePO4
Nominal Capacity (Ah)	200
Battery Voltage (V)	51.2
Battery Voltage Range(V)	46.4~57.9
System Operating Voltage (V)	330~450
System Energy (kWh)	10.24
System Usable Energy (kWh)	9.22 (90%DOD)
Scalability	Max. 16 pcs pack in parallel
Rated DC Power(kW)	4.8
Max DC Power(kW)	5
Charge/Discharge Current (A)	Recommend:12.5 Max:16
Other Parameter	
Recommend Depth of Discharge	0.9
Dimension (W/D/H,mm)	519*161*956
Weight Approximate(kg)	86
IP Rating of Enclosure	IP54
Operating Temperature	0°C~60°C
Storage Temperature	0°C~35°C
Humidity	5%~95%
Altitude	≤2000m
Cycle Life	≥6000 times
Installation	Wall-Mounted, Floor-Mounted
Cooling Mode	Natural Cooling
Communication Port	CAN,RS485, RS232
Warranty Period	5+5 years
Certification	CE、IEC62619、MSDS、UN38.3、ROHS

The current is affected by temperature and SOC



# HIGH VOLTAGE WIFI MONITORING



## MODEL: (ALL BATTERY WITH PACE BMS)

Together with our BMS supplier UDAN, we developed a battery-built-in WiFi monitoring device that supports local Bluetooth and WiFi remote connection methods.

Support switching between Chinese and English.

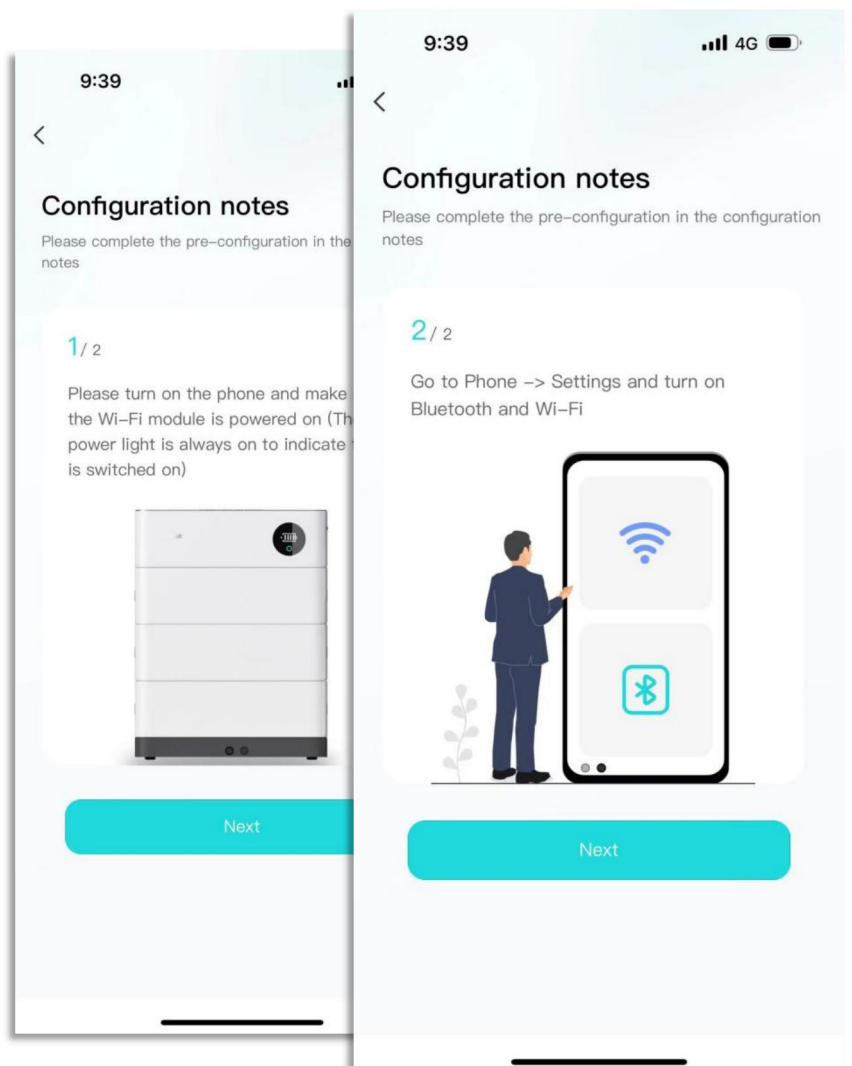
### Preparation before distribution:

Ensure that the device is on, turn on the mobile phone Bluetooth and wireless LAN functions.

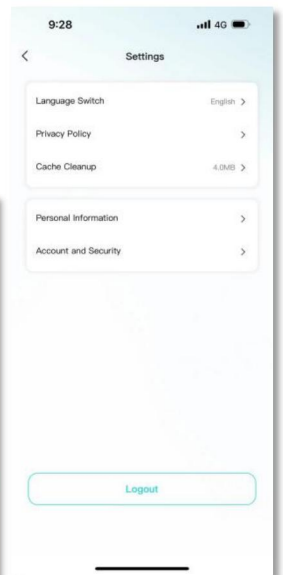
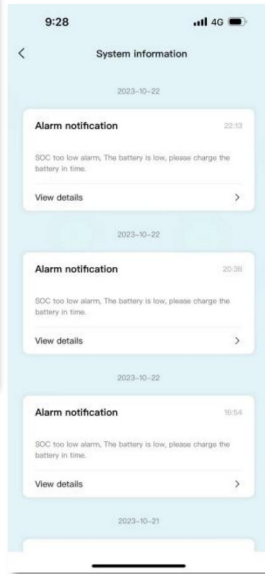
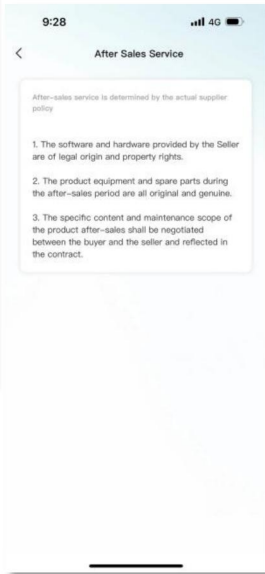
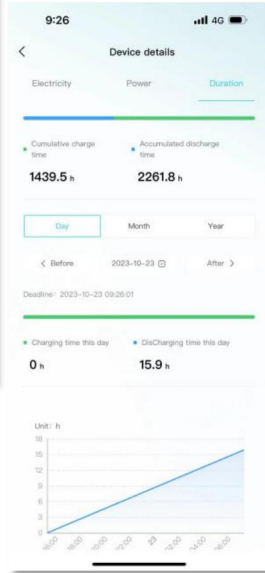
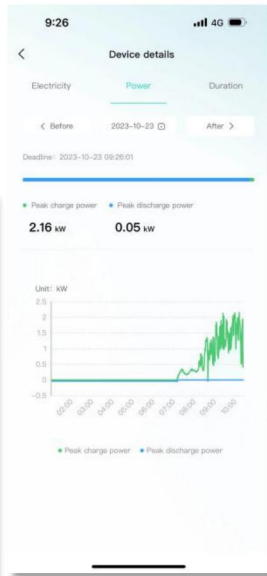
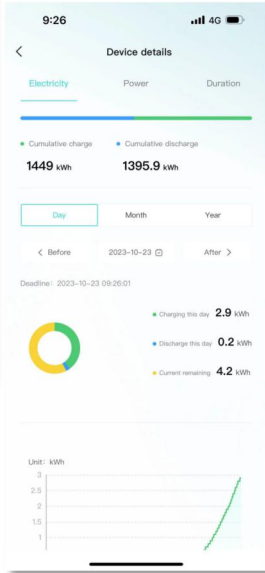
**Connected devices:** The current App supports Bluetooth search, device scanning, and manual input of SN code .

**Connect to WiFi:** After the device is connected, enter the WiFi connection process.

- Select the WiFi you want to use and click the "Connect" button. Enter the WiFi password and click the "Finish" button to distribute the network.



# APP INTERFACE DISPLAY



# COMMUNICATION SUPPORT INVERTER

## Low Voltage

Deye 德業®

GROWATT  
古 瑞 瓦 特

SGFAR

solis

Afore

NEXT  
Next Power

MEGAREVO

SUMRY

LU X POWER<sup>TEK</sup>

SOROTEC®  
Power Solutions Expert

TBB POWER

SRNE 碩日

GOODWE

Voltronic Power  
Advancing Power



## High Voltage

GROWATT  
古 瑞 瓦 特

SGFAR

GOODWE

ATESS

MEGAREVO

Afore

KOYOE

solis

Deye 德業®

LU X POWER<sup>TEK</sup>

