



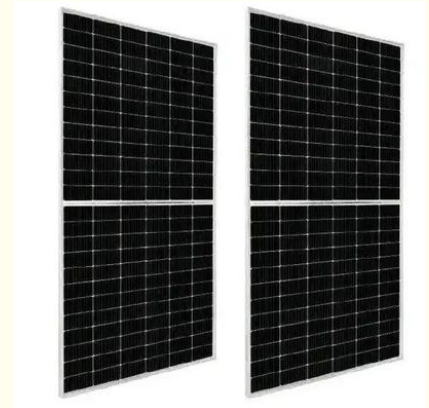
## 310w Commercial Solar Panels 8.49A High Efficiency Solar Panels 6x12 Cells

### Our Product Introduction

for more products please visit us on [monosolarpanel.com](http://monosolarpanel.com)

#### Basic Information

- Place of Origin: China
- Brand Name: Linksun
- Certification: CE
- Model Number: LS-310M
- Minimum Order Quantity: 100PCS
- Packaging Details: 1pcs/carton
- Delivery Time: 5-8days
- Payment Terms: 30% TT in advance, 70% balance before delivery.
- Supply Ability: 1000pieces per week



#### Product Specification

- Product Name: 310w Mono Solar Panels
- Solar Cell: Monocrystalline Silicon Solar Cell
- Application: Homes Camping
- Contract Dimension: 1950\*992\*40
- Back Sheet: White
- Protection Class: IP 65
- Front Material: 3.2mm High Transmission Tempered Glass
- Output Cables: 4 Mm<sup>2</sup>, Length: 900mm
- Highlight: **310w commercial solar panels,  
36.5V commercial solar panels,  
8.49A high efficiency solar panels**

## Product Description

# 310w Commercial Solar Panels 8.49A High Efficiency Solar Panels 6x12 Cells

These 310W commercial solar panels, designed with 6x12 high-efficiency cells, deliver 8.49A of power for optimal performance. Ideal for commercial installations, they provide reliable energy output and excellent durability. Engineered with advanced technology, these panels maximize energy production while minimizing space requirements. Perfect for businesses aiming to reduce energy costs and environmental impact, these panels offer a sustainable and efficient energy solution.

### Product Features:

#### 1) High photoelectric conversion efficiency:

The photoelectric conversion efficiency of monocrystalline silicon solar cells is about 15%, with the highest reaching 24%, which is currently the highest photoelectric conversion efficiency among all types of solar cells.

#### 2) Low production cost:

The production cost of monocrystalline silicon solar cells is relatively low, and the technology is already very mature, so it has been widely used.

#### 3) Long service life:

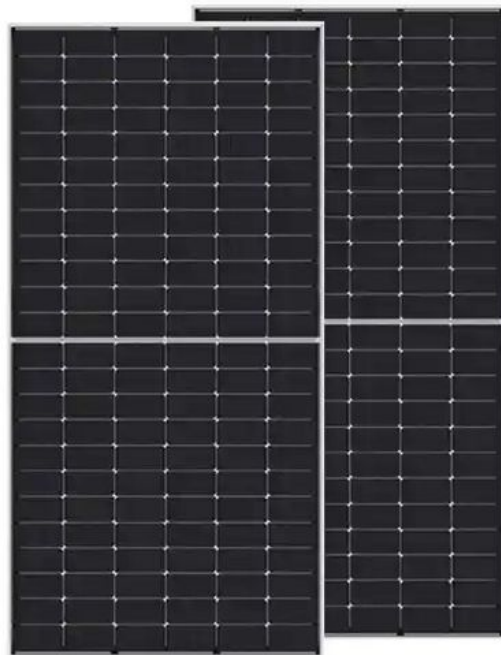
The service life of monocrystalline silicon solar cells is relatively long, generally reaching around 20 years, with the highest reaching 25 years.

#### 4) Good low light performance:

Monocrystalline silicon solar cells can also perform well under low light conditions, making them suitable for use in solar lamps, solar lawn lamps, etc.

### Product Details:

Model	LS-310M
Maximum Power(Pmax)	310W
Maximum Power Voltage(Vmp)	36.5V
Maximum Power Current(Imp)	8.49A
Open Circuit Voltage(Voc)	45.65V
Short Circuit Current(Isc)	9.34A
Power Tolerance(Positive)	3%
Cell Type	Mono-crystalline
Contract Dimensions(mm)	1950*992*40mm
Weight(KGS)	23kg
Protection Class	IP65
Maximum System Voltage	1000V
Temperature Range	-40 ~85
Module Efficiency STC	16.28%
Cell number	72(6x12)
Front Glass	3.2mm High Transmission Tempered Glass
Frame Type	Anodized Aluminum Alloy
Connector Type	MC4
Output Cables	4 mm <sup>2</sup> ,Length:900mm



---

**FAQ:**

Q1:What's the solar panels warranty?

A: 5 year's warranty.If you have any questions about our quality during use,you can contact us at any time.

Q2:Do you accept OEM/ODM orders?

A:We accept OEM/ODM orders.Welcome your inquiry.

Q3:Can I have samples to test?and what's the lead time for the sample order?

A:Yes,of course.The lead time for samples is 7-10 days.

Q4:Are you manufacturer or a trading company?

A:We are manufacturer and our factory is based in Yuyao,Ningbo.Welcome your visit if you like.

Q5:Where are your goods exported?

A:We can export to all over the world.



**Ningbo Linksun Energy Science & Technology Co., LTD**



+8615888168085



sales02@zjlinksun.com



monosolarpanel.com

2nd ,Floor,No.1 Building,Wanyang Entrepreneurial City,Yuyao,Zhejiang Province, China