



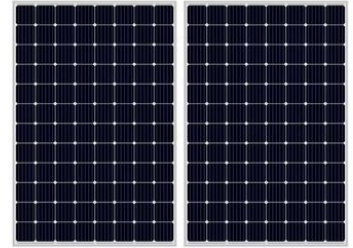
## 250W Monocrystalline Solar Panel Ningbo factory wholesale

Our Product Introduction

for more products please visit us on [monosolarpanel.com](http://monosolarpanel.com)

### Basic Information

- Place of Origin: Ningbo, China
- Brand Name: Linksun
- Certification: CE
- Model Number: LS-250M
- Minimum Order Quantity: 100Pcs
- Packaging Details: 1PC/Ctn
- Delivery Time: 5-8days
- Payment Terms: 30% TT in advance, 70% balance before delivery.
- Supply Ability: 1000pieces per week



### Product Specification

- Support: OEM/ODM
- Number Of Cells: 60cells (6x10)
- Operating Temperature: -40°C To +85°C
- Cell Type: Monocrystalline
- Logo Print: Customization
- Model: Panel
- Cell Efficiency: 22.7%
- Backsheet: TPT
- Highlight: **Monocrystalline Solar Panel,  
72 Cells Solar Panel, 85.C Solar Panel**

## Product Description

## 250W Monocrystalline Solar Panel Ningbo factory wholesale

A 250W monocrystalline solar panel is a popular choice for both residential and commercial solar power systems due to its high efficiency and durability. Here is an overview of a typical 250W monocrystalline solar panel, including its features, specifications, and an example product.

## Product Features:

**High Efficiency:** Monocrystalline solar panels generally offer higher efficiency compared to polycrystalline panels, often in the range of 18-20%.

**Durability:** These panels are designed to last for 25 years or more, withstanding various environmental conditions.

**Temperature Coefficient:** Low temperature coefficient, meaning better performance in high-temperature conditions.

**Robust Frame:** Made from anodized aluminum alloy for strength and ease of installation.

**High Transparency Glass:** Low-iron tempered glass that enhances light absorption and protects the solar cells.

**Weatherproof:** Typically includes IP67 rated junction boxes and connectors to ensure water and dust resistance.

## Technical Parameters:

Technical Parameter	Specification
Power	250W
Cell Type	Monocrystalline
Cell Efficiency	22.7%
Support	OEM/ODM
Size	1640x992x40mm
Logo Print	Customization
Benefits	Durable, Convenient, Waterproof
Backsheet	TPT
Number Of Cells	72 (6x12)
Model	Panel

## FAQ:

## Q1: What is the brand name and model number of the solar panel?

A1: The solar panel is from the Linksun brand, and the model number is LS-250M.

## Q2: Where is the Linksun LS-250M Mono Solar Panel manufactured?

A2: The Linksun LS-250M Mono Solar Panel is manufactured in Ningbo, China.

## Q3: Does the Linksun LS-250M Mono Solar Panel come with any certifications?

A3: Yes, the LS-250M Mono Solar Panel is CE certified.

## Q4: What is the minimum order quantity for the Linksun LS-250M Mono Solar Panel?

A4: The minimum order quantity for the LS-250M Mono Solar Panel is 100 pieces.

## Q5: What are the packaging and delivery details for the Linksun LS-250M Mono Solar Panel?

A5: Each LS-250M Mono Solar Panel is packaged individually in a carton (1PC/Ctn), and the delivery time is typically 5-8 days.

## Q6: What are the payment terms for purchasing the Linksun LS-250M Mono Solar Panel?

A6: The payment terms are 30% TT in advance and the remaining 70% balance before delivery.



Ningbo Linksun Energy Science & Technology Co., LTD



+8615888168085



[sales02@zjlinksun.com](mailto:sales02@zjlinksun.com)



[monosolarpanel.com](http://monosolarpanel.com)

2nd ,Floor,No.1 Building,Wanyang Entrepreneurial City,Yuyao,Zhejiang Province, China