

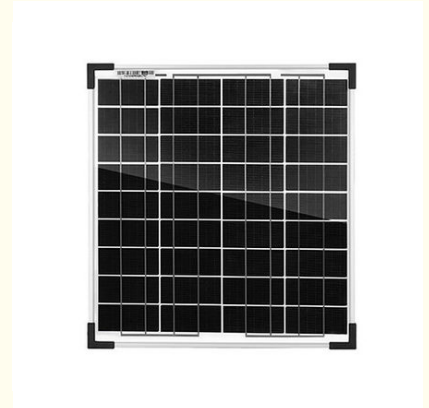


20W Mono Solar Panel With 3% Power Tolerance For Consistent Performance

Our Product Introduction

Basic Information

- Place of Origin: China
- Brand Name: Linksun
- Certification: CE、BSCI
- Model Number: LS-5M
- Minimum Order Quantity: 100PCS
- Packaging Details: 1pcs/carton
- Delivery Time: 5-8days
- Payment Terms: 30% TT in advance, 70% balance before delivery.
- Supply Ability: 1000pieces per week



Product Specification

- Cell Type: 20W Mono Solar Panel With 3% Power Tolerance For Consistent Performance
- Certifications: CE, BSCI
- Product Dimension(mm): 340*380*17mm
- Efficiency: 22%
- Output Cables: 4 Mm², Length:1300mm
- Protection Class: IP68
- Type Of Connector: MC4
- Warranty: 25 Years
- Highlight: Consistent Performance Mono Solar Panel, 3% Power Tolerance Mono Solar Panel, 20W Mono Solar Panel



Product Description

20W Mono Solar Panel With 3% Power Tolerance For Consistent Performance

The 20W mono solar panel delivers reliable performance with a 3% power tolerance, ensuring consistent energy output. Made with high-efficiency monocrystalline silicon cells, it is compact and ideal for small-scale applications like off-grid systems and portable devices. Its durable construction guarantees long-lasting use in various weather conditions.

Product Features:

1)High Efficiency

High modules conversion efficiency. Grade A solar cell and IP68 Rated waterproof solar panel connectors. This solar panel has 5 year 95% output warranty, 10 year 90% output warranty, 25 year 80% output warranty.

2)Reliable and Durable

Corrosion-resistant aluminum frame provides extended outdoor use that ensures the panel can last for decades. The IP68 rated junction box and solar connectors can withstand dirt, dust, debris, and water splashes.

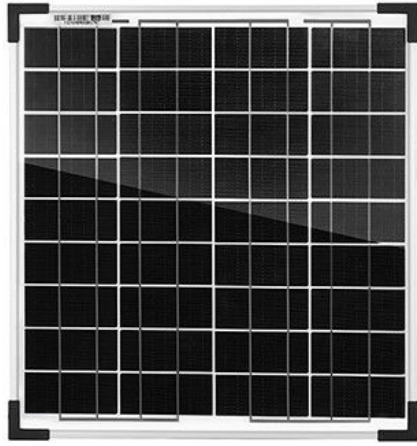
3)High Tolerance

It can tolerate any part of the battery's shading, and performs well in low light conditions due to an increase in the number of batteries receiving more sunlight.

Product Details:

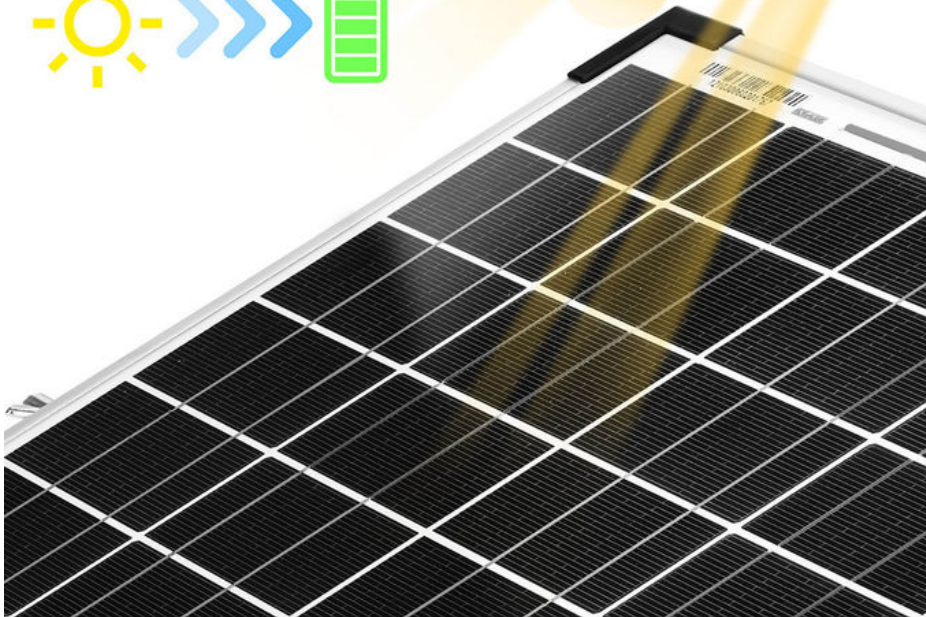
Model	LS-555M
Maximum Power(Pmax)	555W
Maximum Power Voltage(Vmp)	41.86V
Maximum Power Current(Imp)	13.26A
Open Circuit Voltage(Voc)	50.7V
Short Circuit Current(Isc)	14.01A
Power Tolerance(Positive)	3%
Cell Type	N type Mono-crystalline,182x91mm
Product Dimension(mm)	2279*1134*5.5mm(89.72*44.64*0.22inches)
Weight(KGS)	31.5kg
Protection Class	IP68
Maximum System Voltage	1500V DC-(H)
Temperature Range	-40 ~85
Module Efficiency STC	21.48%
Cell number	144(6x24)(Half-Cell)
Front Glass	(F)2.0mm ultra clear embossed double layer colorless glass (B)2.0mm semi-tempered glass
Connector Type	MC4
Output Cables	4 mm²,Length:1300mm

Temperature Characteristics		Packing Configuration	
Temp.Coeff.of Isc(TK Isc)	0.046%/	Container	40'GP
Temp.Coeff.of Voc(TK Voc)	-0.25%/	Pieces per pallet	72
Temp.Coeff.of Pmax(TK Pmax)	-0.30%/	Pallets per container	10
Normal operating cell Temperature	45±2	Pieces per container	720



High Efficiency

SUNSUL Solar Panel: **23%**
Other Solar Panel: 19%



FAQ:

Q1: What's the solar panels warranty?

A: 5 year's warranty. If you have any questions about our quality during use, you can contact us at any time.

Q2: Do you accept OEM/ODM orders?

A: We accept OEM/ODM orders. Welcome your inquiry.

Q3: Can I have samples to test? and what's the lead time for the sample order?

A: Yes, of course. The lead time for samples is 7-10 days.

Q4: Are you manufacturer or a trading company?

A: We are manufacturer and our factory is based in Yuyao, Ningbo. Welcome your visit if you like.

Q5: Where are your goods exported?

A: We can export to all over the world.

Q6: Can we make customized solar panels?

A: Yes, of course. We can design and produce according to your needs.



Ningbo Linksun Energy Science & Technology Co., LTD



+8615888168085



sales02@zjlinksun.com



monosolarpanel.com

2nd ,Floor,No.1 Building,Wanyang Entrepreneurial City,Yuyao,Zhejiang Province, China