

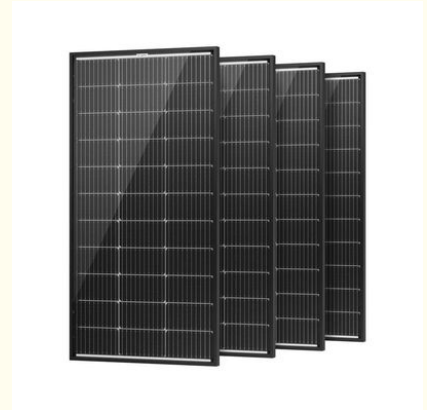
415 Watt 25.5kg Double Sided Solar Panels Monocrystalline Pv Cell

Our Product Introduction

for more products please visit us on monosolarpanel.com

Basic Information

- Place of Origin: China
- Brand Name: Linksun
- Certification: CE
- Model Number: LS-415M
- Minimum Order Quantity: 100PCS
- Packaging Details: 1pcs/carton
- Delivery Time: 5-8days
- Payment Terms: 30% TT in advance, 70% balance before delivery.
- Supply Ability: 1000pieces per week



Product Specification

- Cable: 4.0 Mm²(0.006 Inches²),Length:1100mm
- Cell Type: Mono-crystalline PERC,182x91mm
- Certifications: CE,BSCI
- Connector: MC4
- Dimensions: 1722*1134*30mm(67.79x44.64x1.18 Inches)
- Efficiency: 21.23%
- Frame: Black,Anodized Aluminum Alloy
- Junction Box: IP68 Rated
- Type: Bifacial Solar Panels
- Warranty: 25 Years
- Weight: 25.5kg
- Highlight: **415 watt double sided solar panels,
25.5kg double sided solar panels,
415W monocrystalline pv cell**

Product Description

415 Watt 25.5kg Double Sided Solar Panels Monocrystalline Pv Cell

The 415 Watt Double Sided Solar Panels feature advanced monocrystalline PV cells, offering high efficiency and durability. Weighing just 25.5 kg, these panels are designed for optimal performance on both sides, maximizing energy capture from reflected sunlight. Ideal for residential and commercial installations, they deliver reliable power even in low-light conditions. Their robust construction ensures long-lasting operation, making them a smart investment for sustainable energy solutions. Easy to install and maintain, these panels are perfect for reducing electricity costs and minimizing carbon footprint.

Product Features:

1)Higher efficiency

With the ability of capturing sunlight from both sides,our product of bifacial solar panel can provide up to 21,96% more efficient compared with the common solar panel.

2)Easy to install and use

The pre-drilled holes on the back of the panel make it quick to mount on the roof or other situation.

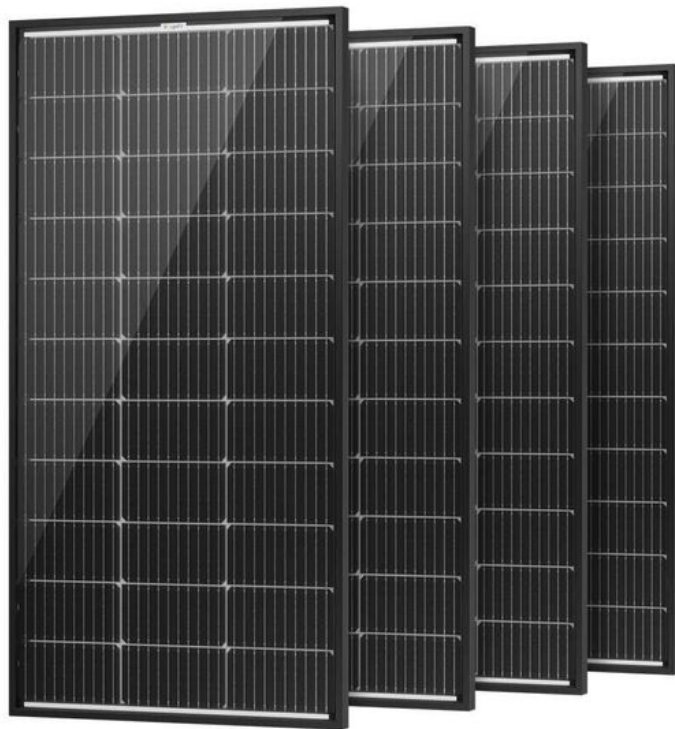
3)Advanced Technology

As one of the most efficient solar technologies in the industry,HJT technology can make products less affected by changes in temperature. Bifacial products pass more sunlight up to 95%.

Product Details:

Model	LS-415M
Maximum Power(Pmax)	415W
Maximum Power Voltage(Vmp)	31.47V
Maximum Power Current(Imp)	13.19A
Open Circuit Voltage(Voc)	37.53V
Short Circuit Current(Isc)	13.97A
Power Tolerance(Positive)	3%
Cell Type	Mono-crystalline PERC,182x91mm
Product Dimension(mm)	1722*1134*30mm(67.79x44.64x1.18 inches)
Weight(KGS)	25.5kg
Protection Class	IP68 rated
Maximum System Voltage	DC 1500V
Operating Temperature Range	-40 ~85
Module Efficiency STC	21.23%
Cell number	108(6x18)(Half-Cell)
Front Glass	(F)2.0mm ultra clear embossed semi-tempered coated glass (B)2.0mm semi-tempered glass
Frame Type	Black,Anodized Aluminum Alloy
Connector Type	MC4
Output Cables	4.0 mm ² (0.006 inches ²),Length:1100mm

Temperature Characteristics		Packing Configuration	
Temp.Coeff.of Isc(TK Isc)	0.048%/	Container	40'HQ
Temp.Coeff.of Voc(TK Voc)	-0.27%/	Pieces per pallet	72
Temp.Coeff.of Pmax(TK Pmax)	-0.34%/	Pallets per container	13
Normal operating cell Temperature	44±2	Pieces per container	936

**FAQ:**

Q1:What's the solar panels warranty?

A: 5 year's warranty.If you have any questions about our quality during use,you can contact us at any time.

Q2:Do you accept OEM/ODM orders?

A:We accept OEM/ODM orders.Welcome your inquiry.

Q3:Can I have samples to test?and what's the lead time for the sample order?

A:Yes,of course.The lead time for samples is 7-10 days.

Q4:Are you manufacturer or a trading company?

A:We are manufacturer and our factory is based in Yuyao,Ningbo.Welcome your visit if you like.

Q5:Where are your goods exported?

A:We can export to all over the world.



Ningbo Linksun Energy Science & Technology Co., LTD



+8615888168085



sales02@zjlinksun.com



monosolarpanel.com

2nd ,Floor,No.1 Building,Wanyang Entrepreneurial City,Yuyao,Zhejiang Province, China