



## SUNLANRFID GROUP

### 📍 OFFICE ADDRESS:

1308, Building E, Xinghe WORLD Phase II, Minle Community, Minzhi Street, Longhua District, Shenzhen, China 518131

### 📍 R&D Center and Label Production Address:

301, Building 2, No.32, Fumin Road, Zhenxingwei, Tangxia Town, Dongguan City, Guangdong Province, China 523710.

### 📍 Card and PVC Inlay Prelam Production Address: :

201-601, Building 24, Phase I, Xinlikang Lechuangcheng Industrial Park, Dongjiangwan, Shukou Street, Huicheng District, Huizhou, China.

☎ 86 755 29672927 📠 86 755 29672925

[www.sunlanrfid.com](http://www.sunlanrfid.com)



## PRODUCT BROCHURE

One-Stop RFID&NFC Solution Provider

# About Sunlanrfid

- **18<sup>+</sup>** Over 18 years of RFID industry experience
- **1.2<sup>+</sup>** Over 1.2 billion annual capacity
- **80<sup>+</sup>** Awarded 80+ patents and software copyrights



- R&D: **30+**
- Total Employees: **300+**
- Factory Area: **20000+m²**
- Well-known brand partners: **100+**
- Certification: **ISO9001, ROHS, REACH, SGS, BV etc.**

## CONTENTS

### 01 Corporate Advantage

Production Equipment	01
Core Competitiveness	02

### 02 Products

Rfid Smart Card	03
Rfid Tag Series	07
Rfid Anti-Metal Tag	12
Rfid Wristband	13
Keyfob	14
PVC Inlay Prelam	15

### 03 Antenna&Chip List

UHF Antenna List	16
Chip List	19

# PRODUCTION EQUIPMENT

ONE-STOP RFID&NFC SOLUTION PROVIDER

## CARD FACTORY



Major equipment 1

- **HEIDELBERG SPEEDMASTER SX 52-5 FIVE-COLORS OFFSET PRINTING MACHINE**

## ADVANTAGES:

- Enhanced color accuracy and brightness with spot colors
- Superior color reproduction
- Increased security features
- Fast speed for high-volume printing
- Minimal color variance and low defect rate

## LABEL FACTORY



Major equipment 2

- **GERMAN MÜHLBAUER DDA 40000 WF BONDING MACHINE**

## ADVANTAGES:

- World's most advanced bonding equipment
- Single-unit daily capacity over 1 million units
- Exceptional quality consistency
- Ideal for large-scale projects

## INLAY FACTORY



Major equipment 3

- **ADVANCED FULL-AUTOMATIC ULTRASONIC WINDING MACHINE, AUTOMATIC SMT MACHINE, SPOT WELDING MACHINE, DIGITAL LAMINATING MACHINE, ETC.**

## ADVANTAGES:

- Robust capacity for smart card inlay mass production
- Ensures consistency and precision, ideal for high-volume production

# CORE COMPETITIVENESS



**80** pieces  
Number of technology patents held

**125** pieces  
Number of software publications



# RFID SMART CARD

ONE-STOP RFID&NFC SOLUTION PROVIDER

## APPLICATION AREAS:

For Access Control, Membership Management, identification



Available materials:

- ① Paper
- ② PVC
- ③ PET
- ④ PETG
- ⑤ PLA
- ⑥ Wood
- ⑦ ABS
- ⑧ Metal

## Material Comparison for Cards

Material	Advantages	Disadvantages	Applications	Environmental Impact	Cost
PVC	Low cost, easy to process, widely used	Poor heat stability, brittle at low temps, environmental concerns	ID cards, credit cards, access control cards	Not eco-friendly, hard to recycle	Low
PET	Durable, wear-resistant, chemically resistant	Difficult to print, higher cost	Durable ID cards, electronic payment cards	Eco-friendly, recyclable	Medium to High
PETG	Easy to print, good toughness, eco-friendly	Higher cost, slightly lower heat resistance than PET	Eco-friendly credit cards, ID cards	Very eco-friendly	Medium
PLA	Completely biodegradable, low toxicity	High cost, poor heat resistance, less durable	Green projects like gift cards, promotional cards	Highly eco-friendly	High (20%-30% more than PVC)
R-PVC	Low cost, retains most of PVC's properties	Potentially less consistent quality	Similar to PVC, but for eco-conscious applications	More eco-friendly than PVC	Low to Medium
Paper Cards	Low cost, fully biodegradable, recyclable	Low durability, poor water resistance	Eco-friendly gift cards, promotional cards, temporary cards	Highly eco-friendly, recyclable	Low
Metal Cards	Extremely durable, premium aesthetic, highly secure	High cost, heavy, not flexible, hard to print on	Luxury membership cards, access cards, premium credit cards	Not eco-friendly, difficult to recycle	Very High
Wooden Cards	Biodegradable, aesthetic, customizable	Higher cost, not as durable, can warp	Eco-conscious projects, premium business cards	Highly eco-friendly, biodegradable	High
ABS	High surface hardness, stable at low temps	Poor UV resistance, ages quickly outdoors	Card cores, where high rigidity is needed	Not eco-friendly	Low

# RFID CARD TYPES

ONE-STOP RFID&NFC SOLUTION PROVIDER



White/Blank Card



Magnetic Stripe Card



Wooden Card



Paper Card



Printed Card



Clamshell Card



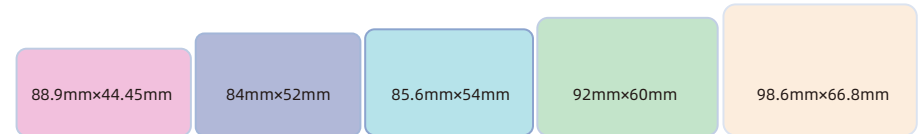
Metal Card



Blocking Card

## Customized NFC Tag <<<

Common customized sizes:



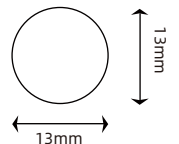
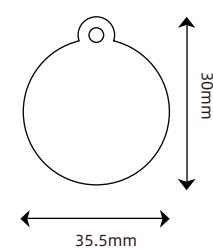
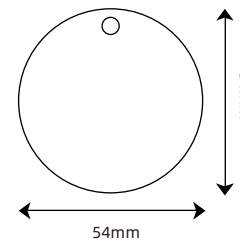
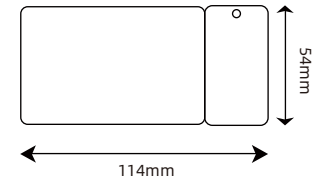
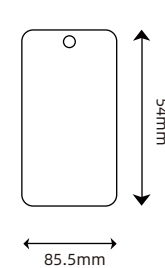
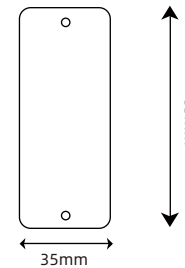
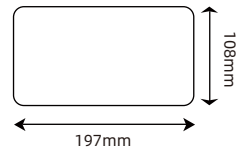
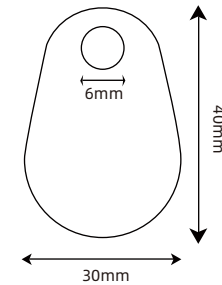
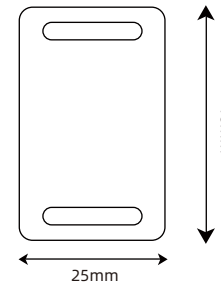
CR50

CR79

CR80

CR90

CR100



# RFID LABEL SERIES

ONE-STOP RFID&NFC SOLUTION PROVIDER

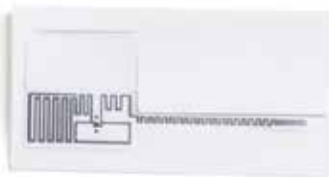
## RFID LIBRARY LABEL

- Efficient Tracking: Quickly locates and tracks library items
- Easy Inventory: Speeds up stocktaking and reduces errors
- Self-Service: Enables fast, self-checkout for patrons



## RFID JEWELRY LABEL

- Fast delivery & receiving & labeling
- Improve refined product management & customer experience
- Improve logistics efficiency ,Reduce financial pressure



## RFID LED LABEL

- Light up to find the objects
- Fast locating
- Achieve visible management
- For files; cables; etc



## TAMPER-EVIDENT LABEL

- Anti-counterfeiting & traceability
- Widely used in anti-counterfeiting, packaging, and tobacco/alcohol sectors



## APPAREL RETAIL LABEL SERIES

- Inventory & shipment accuracy
- Anti-counterfeiting & anti-channeling good
- Membership management; Interactive communications; Automated self checkout

### RFID HANG TAG



### EAS+RFID



### RFID CARE LABEL



### ETAIL LABEL



## SUPERMARKETS RETAIL

- Accurate Inventory: Real-time tracking minimizes errors
- Liquid-Resistant: Durable in wet environments
- Fast Checkout: Quick, contactless scanning



# RFID LAUNDRY TAG

ONE-STOP RFID&NFC SOLUTION PROVIDER

## 1.0 Rfid Textile Laundry Label

- High temperature and pressure resistance
- Mainly used for everyday clothing, ideal for products requiring good hand feel and comfort



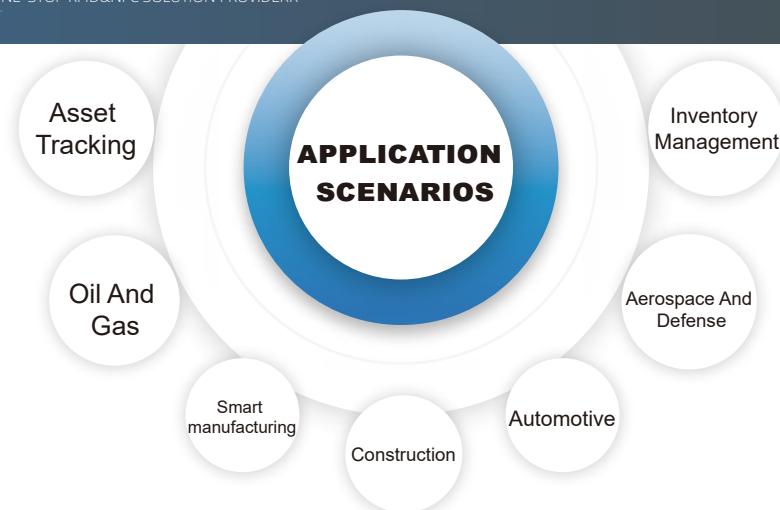
## 2.0 PPS Laundry Button

- Good tear resistance and long lifespan
- Suitable for high-temperature and chemical-resistant garments, like workwear or specialized clothing



# RFID ANTI-METAL TAG

ONE-STOP RFID&NFC SOLUTION PROVIDER



## Product List



ABS  
ANTI-METAL TAG



PCB  
ANTI-METAL TAG



NFC  
TOKEN



FLEXIBLE ANTI  
METAL RFID TAG



RFID  
GUARD PATROL TAG



UHF  
TIRE PATCH TAG

# RFID WRISTBAND

ONE-STOP RFID&NFC SOLUTION PROVIDER



## Product List



# KEYFOB

ONE-STOP RFID&NFC SOLUTION PROVIDER

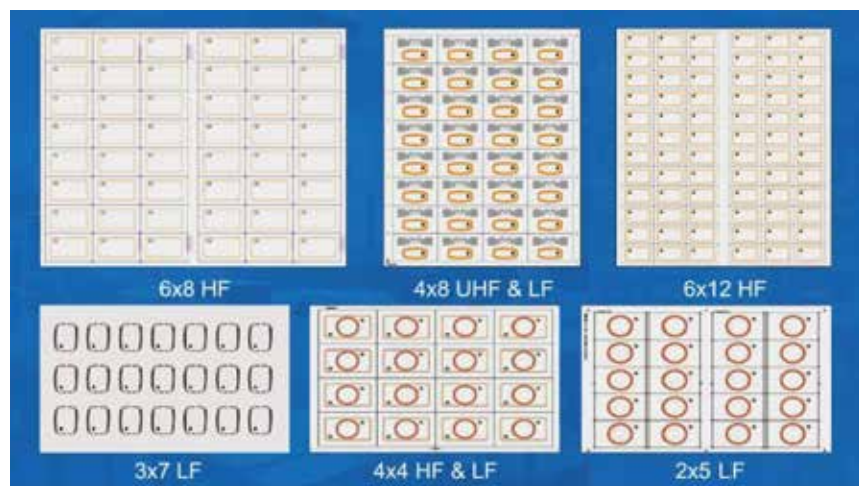
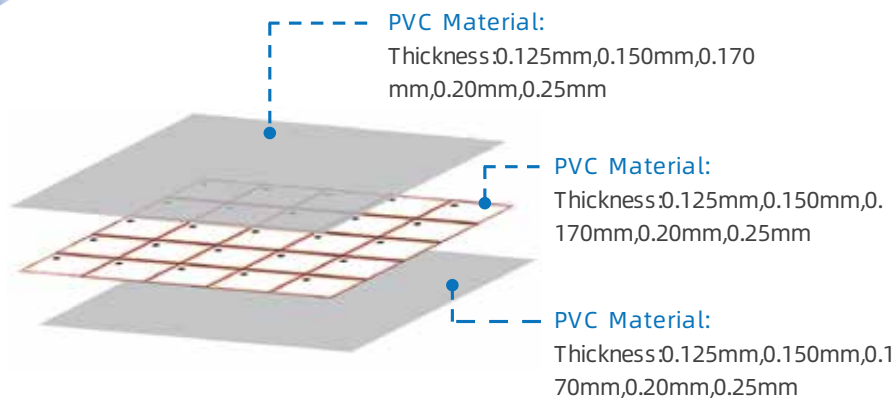


## Product List



# PVC INLAY PRELAM

ONE-STOP RFID&NFC SOLUTION PROVIDER













Frequency	Layout	
125KHz	3× 7, 5× 5, 3× 8, 4× 8, 4× 6, 4× 7, 2× 5, 2× 4, 6× 8, 8× 10 etc. Max Dimension up to 620*770mm	
13.56MHz		
860-960MHz		
Thickness	Operating Temperature	Available IC
0.5mm+0.03	-25C ~ +55C	Atmel/EM Martin/NXP
0.42mm+0.03	-25C ~ +55C	NXP /ST /Infineon /LEGIC
0.42mm+0.03	-25C ~ +55C	Impinj/Alien/NXP

## UHF Antenna List (Part)

### UHF Antenna list--Impinj MR6 Series

#	Name	Chip	Antenna Size	Antenna Image	Read Range	Application
1	SL4015-R6	MR6/MR6-P	15*40mm		865MHz: 3m 920MHz: 6.8m	Clothing Retail
2	SL5030-R6	MR6/MR6-P	50*30mm		865MHz: 4m 920MHz: 11m	Clothing
3	SL7015-R6	MR6/MR6-P	70*15mm		865MHz: 2.6m 920MHz: 9m	Clothing
4	AR61F	MR6/MR6-P	15*40mm		865MHz: 2m 920MHz: 6m	Clothing Retail
5	SL9503-R6	MR6/MR6-P	3*95mm		865MHz: 4.5m 920MHz: 11m	Library Wine Logistics
6	SL9511-R6	MR6/MR6-P	11*95mm		865MHz: 12m 920MHz: 14m	Logistics Wine
7	SL1142-R6	MR6/MR6-P	11*42mm		865MHz: 2m 920MHz: 3.5m	Jewelry
8	SL1027-R6	MR6/MR6-P	10*27mm		865MHz: 3m 920MHz: 4.5m	Drug Jewelry
9	SL1222-M6	MR6/MR6-P	12.5*22mm		865MHz: 1m 920MHz: 3m	Drug Jewelry
10	SL1033-M6	MR6/MR6-P	10*33mm		865MHz: 1.5m 920MHz: 4m	Drug Jewelry

## UHF Antenna List (Part)

#	Name	Chip	Antenna Size	Antenna Image	Read Range	Application
1	SL1222-M700	M730/M750	12.5*22mm		865MHz: 1m 920MHz: 3.5m	Jewelry
2	SL1027-M700	M730/M750	10*27mm		865MHz: 3m 920MHz: 6m	Jewelry
3	SL3050-M700	M730/M750	30*50mm		865MHz: 6m 920MHz: 15m	Clothing Retail
4	SL0895-M700	M730/M750	8*95mm		865MHz: 17m 920MHz: 20m	Logistics Packaging
5	SL1642-M700	M730/M750	16*42mm		865MHz: 8m 920MHz: 10m	Clothing Retail
6	SL1642-M700	M730/M750	16*42mm		865MHz: 1m 920MHz: 4.5m	Clothing Retail
7	SL1470-M700	M730/M750	14*70mm		865MHz: 10m 920MHz: 16m	Clothing Retail
8	SL1470-M700-A4	M730/M750	14*70mm		865MHz: 8m 920MHz: 15m	Clothing Retail
9	SL0395-M700	M730/M750	3*95mm		865MHz: 8m 920MHz: 15m	Library Wine
10	SL1993-M700	M730/M750	19*93mm		865MHz: 7m 920MHz: 16m	Logistics Packaging

## Chip List (Part)

Brand name	Chip Type	Protocol	Capacity	Frequency	Function
NXP	Hitag 1	ISO11784/85	2K Bit	125KHz	Read/Write
	Hitag 2	ISO11784/85	256 Bit	125KHz	Read/Write
	Hitag S256	ISO11784/85	256 Bit	125KHz	Read/Write
	Hitag S2048	ISO11784/85	2K Bit	125KHz	Read/Write
	NTAG213	ISO/IEC 14443 Type A	144/180 Byte	13.56MHz	Read/Write
	NTAG215/NTAG216	ISO/IEC 14443 Type A	540/924 Byte	13.56MHz	Read/Write
	NTAG413 DNA	ISO/IEC 14443 Type A	160Byte	13.56MHz	Read/Write
	NTAG 424 DNA	ISO/IEC 14443 Type A	416Byte , include 128 security data file	13.56MHz	Read/Write
	NTAG 424 DNA TT	ISO/IEC 14443 Type A		13.56MHz	Read/Write
	MIFARE® Classic 1K	ISO/IEC 14443 Type A	1K Byte	13.56MHz	Read/Write
	MIFARE® Classic 4K	ISO/IEC 14443 Type A	4K Byte	13.56MHz	Read/Write
	MIFARE® Plus S/X/EV1 2K/4K	ISO/IEC 14443 Type A	2K/4K Byte	13.56MHz	Read/Write
	MIFARE® Plus SE	ISO/IEC 14443 Type A	1K Byte	13.56MHz	Read/Write
	MIFARE® DESFire EV1	ISO/IEC 14443 Type A	2KB/4KB/8KB/256	13.56MHz	Read/Write
	MIFARE® DESFire EV2	ISO/IEC 14443 Type A	2K/4K/8K Byte	13.56MHz	Read/Write
	MIFARE® DESFire Light	ISO/IEC 14443 Type A	1 K Byte	13.56MHz	Read/Write
	MIFARE Ultralight C	ISO/IEC 14443 Type A	192 Byte	13.56MHz	Read/Write
	MIFARE Ultralight® EV1	ISO/IEC 14443 Type A	USER 384 EEPOM 640	13.56MHz	Read/Write
	MIFARE Ultralight®	ISO/IEC 14443 Type A	EEPROM 512 USER 384	13.56MHz	Read/Write
	MIFARE Ultralight Nano	ISO/IEC 14443 Type A	40 Bit	13.56MHz	Read/Write
EM-Marin	ICODE SLI-L	ISO/IEC 15693	512 Bit	13.56MHz	Read/Write
	ICODE SLI-S	ISO/IEC 15693	2048 Bit 2K	13.56MHz	Read/Write
	ICODE SLIX	ISO/IEC 15693	1024 Bit 1K	13.56MHz	Read/Write
Atmel	I CODE SLI	ISO/IEC 15693	1024 Bit 1K	13.56MHz	Read/Write
	EM4205 / EM4305	ISO 11784 Compatible	512 bit	125KHz	Read/Write
	EM4200	ISO 11784 Compatible	64 bit	125KHz	Read
ST	EM4450 / EM4550	EM4550 with Gold Bumps	1K bit	125KHz	Read/Write
	ATA5577	ISO 11784 Compatible	363 bit	125KHz	Read/Write
	ST25TB512	ISO/IEC 14443 Type B	512bit	13.56MHz	Read/Write
	ST25TB02K	ISO/IEC 14443 Type B	2K bit	13.56MHz	Read/Write
	ST25TA02KB	ISO/IEC 14443 Type A	2K bit	13.56MHz	Read/Write
	ST25TA 16K / 64K	ISO/IEC 14443 Type A	16K/64K	13.56MHz	Read/Write
	ST25TV02K	ISO/IEC 15693	2K bit	13.56MHz	Read/Write
	ST25TV512	ISO/IEC 15693	512 bit	13.56MHz	Read/Write
TI	ST25TV64K	ISO/IEC 15693	64K	13.56MHz	Read/Write
	TI2048	ISO/IEC 15693	2K Byte = 2048k bit	13.56MHz	Read/Write

## Chip List (Part)

Brand	Chip name	Read sensitivity	TID	Access	Kill	EPC	USER
Alien	Higgs 3	-18dbm	E2003412	32	32	96-496	512
	Higgs 4	-18.5dBm	E2003414	32	32	128	128
	Higgs-EC	-22.5dBm	E2003811	32	32	128	128
	Higgs 9	-22.5dBm	E2003821/ E2803821	32	32	96-496	688
	Higgs 10	-23dBm	E2803813	32	32	96-128	0-32
NXP	Ucode 8	-23dBm	E2806894	32	32	128	0
	Ucode 8m	-23dBm	E2806994	32	32	96	32
	Ucode 9	-24dBm	E2806995	0	32	96	0
	Ucode 9XE	-24dBm	E2806A162	32	32	128	32
	Ucode 9XM	-24dBm	E2806897	32	32	128/256/496	752/624/384
Impinj	Monza 4i	-22dBm	E2801114	32	32	256	480
	Monza 4D	-22dBm	E2801100	32	32	128	32
	Monza 4QT	-22dBm	E2801105	32	32	128	512
	Monza R6	-22.1dBm	E2801160	0	0	96	0
	Monza R6-P	-22.1dBm	E2801170	32	32	128	32
	M730	-24dBm	E2801191	32(Share)		128	0
	M750	-24dBm	E2801190	32(Share)		96	32
	M770	-24dBm	E28011A0	32(Share)		128	32
	M780	-23.5dBm	E28011C0	32(Share)		496	128
	M781	-23.5dBm	E28011C1	32(Share)		128	512
	M830	-25.5dBm	E28011B0	32(Share)		128	0
	M850	-25.5dBm	E28011B0	32(Share)		96	32
EM	EM4324	-8dBm,-27dBm	E200B001/2	32	32	96	720
	EM4325	-8dBm,-30dBm	E200BXXX	32	32	352	3072
	EM4423	-16dBm	E280B0A0/1	32	32	128/224	160/64
	EM4124	-19dBm	E200B080	32	32	96	0
	EM4126	-19dBm	E200B0C0	0	0	208	0
	EM4425	-20dBm	E200B112	32	32	480	1056

## Happy Partnerships



And You...