

## MTI Smart LCD Data Sheet

*Drawing No: MTI-LCDLT-C8-2024105*

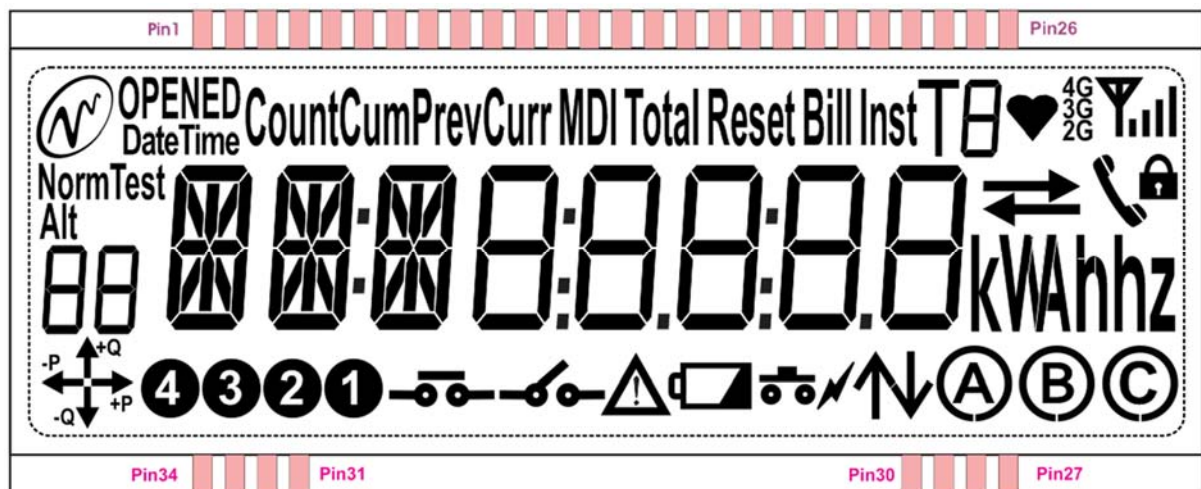
Date	18/3/2024
Version	A
Status	
Author	
Part No.	MTI-LCDLT-C8-2024105

## DOCUMENT DISTRIBUTION POLICY

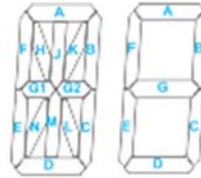
The information in this document constitutes intellectual property rights of MicroTech Industries (Pvt.) Ltd. It shall be understood that the contents of the document are confidential and only to be used within the scope of the said project. This document, or portions thereof, should not be utilized or distributed in any way to any third party without prior written approval of MicroTech Industries.

Kindly use attached CAD file (\*.DWG)for the LCD design & manufacturing purpose.

<b>Display Type</b>	TN/Positive	<b>Operating Voltage</b>	3.6V
<b>Viewing Direction</b>	6 o' Clock	<b>Operating Temp</b>	-30 to 85 ℃
<b>Polarizer Mode</b>	Reflective	<b>Storage Temp</b>	-30 to 85 ℃
<b>Drive Method</b>	1/ 8Duty 1/3 Bias	<b>PIN/Lead Length</b>	PIN/12mm
<b>Unit</b>	mm	<b>PID/RID</b>	517/0



### 3 LCD pin Configuration



PINS	1	2	3	4	5	6	7	8	9	10	11	12	13	14	15	16	17	18	19	20	21
COM0	S1	4N	4A		5N	5A		6N	6A		7A	MDI		8A	9A	10A	11A	COM0			1A
COM1	Norm	4M	4B		5M	5B		6M	6B		7B	Curr		8B	9B	10B	11B		COM1		1B
COM2	Alt	4L	4C		5L	5C		6L	6C		7C			8C	9C	10C	11C			COM2	1C
COM3	Test	4K	4D		5K	5D		6K	6D		7D			8D	9D	10D	11D				1D
COM4	OPENED	4J	4E		5J	5E		6J	6E		7E			8E	9E	10E	11E				1E
COM5	Date	4H	4F		5H	5F		6H	6F		7F			8F	9F	10F	11F				1F
COM6	Time	4G2	4G1		5G2	5G1		6G2	6G1		Dp1			Total	Dp3	Dp4	Inst				T
COM7					Count	CUM		COL1	Prev		COL2			Dp2	Reset	COL3	Bill				

PINS	22	23	24	25	26	27	28	29	30	31	32	33	34
COM0					HRT	2G				K-on	1	3A	2A
COM1					3G	COMM	FWD	S20		K off	2	3B	2B
COM2					4G	Lock	REV	S19		CAU	3	3C	2C
COM3					S2	S12	S10	S7	COM3	BAT	4	3D	2D
COM4	COM4				S3	S14	S11	S8		SW		3E	2E
COM5		COM5			S4	S15	S13	S9		Pwr		3F	2F
COM6			COM6		S5	S16	S17	S18				+Q	-P
COM7				COM7	S6	C	B	A				+P	-Q

1. You must not change the COM0 to COM7

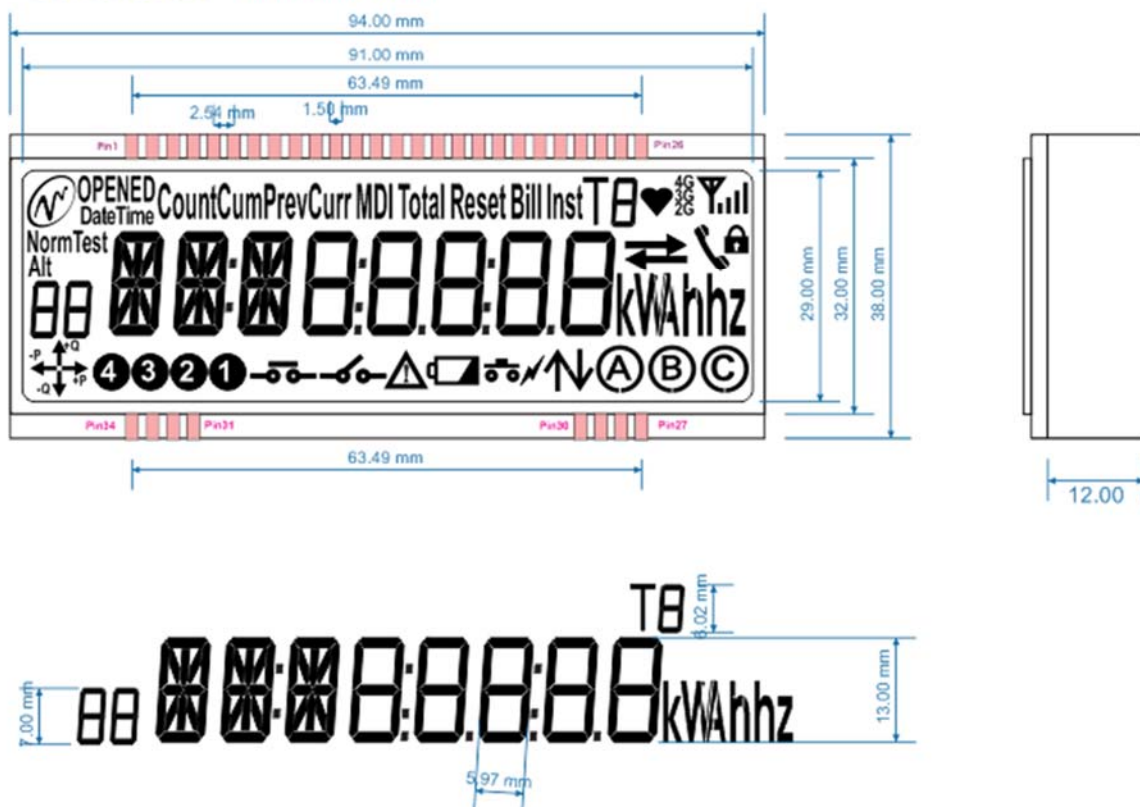
2. For your Convenience you can shuffle the blocks highlighted in RED.

a. Please Do not to change the segments inside the blocks.

Note: Please do not change the segment sequence in the table. This pin configuration is the final.

## 4-Dimensions

**Dimension** All Unit in mm



### Rear view



Part No. "MTI-LCDLT-C8" must be printing on LCD back side