

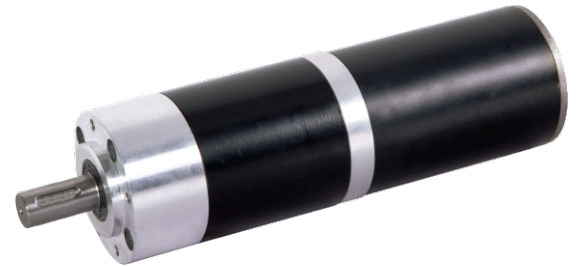
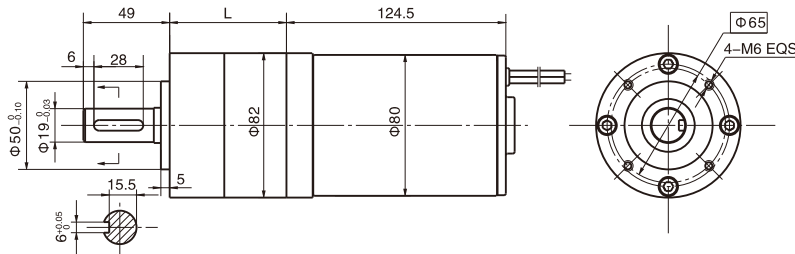


# DC Planetary Gear Motor

## PG82-80ZY115

$\Phi 82$ 行星齿轮减速器, 允许转矩范围:120 N.m  
82mm OD Planetary Gearhead,  
Permissible Load Range:120N.m

### ● 外形和安装尺寸 Dimensions



### ● 电动机主要技术参数 Motor Technical Data

电机型号 TYPE	额定电压 Rated voltage VDC	空载转速 No-load speed r/min	空载电流 No-load current A	额定转速 Rated speed r/min	额定转矩 Rated torque mN.m	输出功率 Output power W	额定电流 Rated current A	堵转力矩 Stall torque N.m	堵转电流 Stall current A
80ZY115-2420	24	2000	0.3	1700	320	57	3.5	1.5	12
80ZY115-2430	24	3000	0.5	2600	440	120	7.5	2.5	30

### ● 齿轮减速电机主要技术参数 Gear Motor Technical Data

配置80ZY115-2420直流电机 (80ZY115-2420 DC Motor)

减速比 Reduction ratio	4	7	14	19	25	32	50	64	71	90	116	152	195	329
减速级数 Number of gear trains	1	1	2	2	2	2	3	3	3	3	3	3	3	3
减速器长度(L) Length(L) mm	66	66	90	90	90	90	115	115	115	115	115	115	115	115
空载转速 No-load speed r/min	500	286	143	105	80	63	40	31	28	22	17	13	10	6
额定转速 Rated speed r/min	425	243	121	89	68	53	34	26	24	19	14	11	8.5	5
额定转矩 Rated torque N.m	1.6	2.8	5.0	6.8	8.9	11	16	21	23	29	37	49	63	105
最大瞬间允许负载 Max. permissible load in a short time N.m	60	60	180	180	180	180	360	360	360	360	360	360	360	360

配置80ZY115-2430直流电机 (80ZY115-2430 DC Motor)

减速比 Reduction ratio	4	7	14	19	25	32	50	64	71	90	116	152	195	329
减速级数 Number of gear trains	1	1	2	2	2	2	3	3	3	3	3	3	3	3
减速器长度(L) Length(L) mm	66	66	90	90	90	90	115	115	115	115	115	115	115	115
空载转速 No-load speed r/min	750	429	214	158	120	94	60	47	42	33	26	20	15	9
额定转速 Rated speed r/min	650	371	185	137	104	81	52	40	36	29	22	17	13	8
额定转矩 Rated torque N.m	1.2	2.0	3.6	4.9	6.5	8.3	12	15	16.5	21	27	36	46	77
最大瞬间允许负载 Max. permissible load in a short time N.m	60	60	180	180	180	180	360	360	360	360	360	360	360	360