



DC Brushless Motor

General Specifications

Item	Specification
Winding type	Star
Hall Effect angle	120° electrical angle
Insulation Class	B
Ambient Temperature Range	-20°C~ +50°C
Insulation Resistance	100MΩMin.500V DC
Dielectric Strength	1000V AC 1 minute

Motor Data

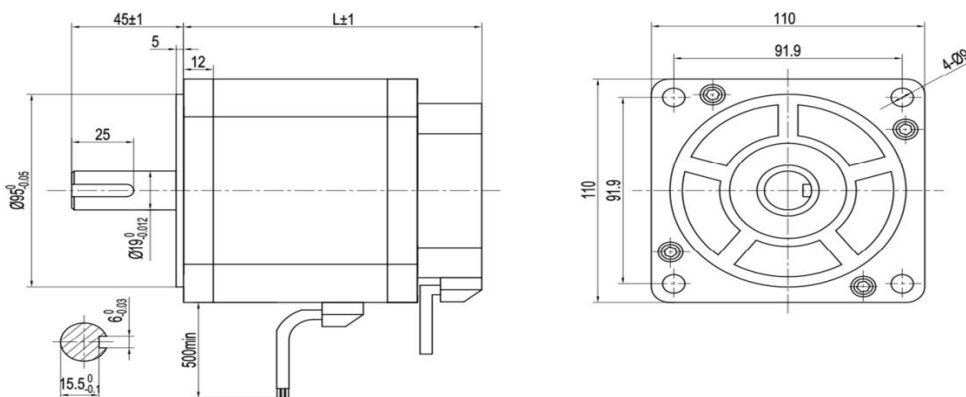
Model		110BLF01	110BLF02	110BLF03
Number of Poles		8		
Number of Phases		3		
Rated Voltage	VDC	310	310	310
Rated speed	RPM	3000	3000	3000
Rated Torque	N-m	3.5	4.5	6.5
Rated Current	Amps	5	6	8.5
Output Power	Watts	1000	1400	2000
Peak Torque	N-m	10.5	13.5	19.5
Peak Current	Amps	15	18	25.5
Torque constant	N-m/Amps	0.75	0.75	0.75
Back EMF	V/kRPM	77.5	77.5	77.5
Rotor inertia	g • cm ²	3000	3500	4000
Body Length (L)	mm	156	177	216
Mass	kg	6	8	10

*** Note: It's only typical technical data, special requirement can be customized.**

Caution 1: Peak Torque is provided for the purpose of performance calculations only. Operate near, or at this condition will result in motor damaged.

Note: hall sensor power supply voltage +5 to +20VDC

Dimensions



Note: The motor parts such as shaft size, encoders, cables & connectors can be customized.