



ISO9001:2015

WOOD INDUSTRY



WELDED STEEL CHAINS



www.jqchain.com



ABOUT US

公司简介

江苏金球链传动有限公司成立于1989年，金球链条已成为中国领先的产业链制造商。工厂占地面积6万多平方米，有8个专业生产车间，员工300多人，其中技术、研发人员50人。

金球一直致力于链条的研发、制造和销售。公司拥有400吨冲床、焊接机器人、激光切割设备、真空炉、多用炉、网带炉、光谱仪、100吨拉力机等以及300多台先进的生产和检测设备。年生产能力10000吨。

金球已开发出输送链、传动链、驱动链等复杂的产品家族。主要产品有焊接链、棕榈油链、糖链、水泥链、工程链、汽车及工程机械地面总装输送线、涂装输送线链条等。广泛应用于木材工业、棕榈油工业、制糖工业、食品工业、造纸工业、水处理工业、采矿业、水泥冶金、汽车、工程机械等行业。

金球设计，制造和组装链条的所有部件，以确保我们提供的产品符合客户的高标准。我们拥有一支充满活力的管理团队，经验丰富的技术人员和熟练的工人，为您提供高品质的产品。我们的产品远销世界各地，受到国内外市场的高度认可。

金球通过建立和完善质量管理体系，将有效的全过程质量控制与预防为主、先进的检测设备相结合，不断提高产品质量。我们也不断向国际领先的制造商学习，同时吸收相关的先进技术，以提高我们产品的竞争力。

金球链条传动世界，我们执著于成长为工业链条的领先者。金球追求的不是买与卖的关系，而是长期稳定合作伙伴的关系。

金球，这是您正确的选择和决定。

Jiangsu Jinqiu Chain Transmission Co., LTD., was founded in 1989, It is a leading industrial chain manufacturer in China. The factory covers an area of more than 60,000 square meters, with 8 specialized production workshops, over 300 employees and including 50 in engineering and product developing.

Jinqiu chain has been devoting ourselves to chains' research and development, manufacturing and sales. We have 400 Ton punching machines, 100 Ton tensile machine, various welding robots and laser cutting equipment, Vacuum furnace, multi-purpose furnace, mesh belt furnace, spectrometer, and over 300 sets advanced production and testing equipment. Annual production capacity is 10,000 tons.

Jinqiu chain has developed a complex product family of conveyor chain, transmission chain, driving chain. Main products are welded chain, palm oil chain, sugar chain, cement chain, engineering chain, automotive and construction machinery ground assembly conveyor chain, coating conveyor chain etc. They are widely applied in the industries as wood, palm oil, sugar, cement metallurgy, construction machinery, food, water purification screen transfer, car plant, paper, crawler asphalt, construction paver chain, mining and other industries.

Jinqiu chain designs, manufactures and assembles all the parts of the chain to ensure that the products we deliver meeting the customers' high standards. We have a dynamic management team, experienced technicians and skilled workers to provide you with high quality products. Products are sold widely all over the world, and highly recognized by domestic and global markets.

Jinqiu chain keeps improving its product quality by establishing and upgrading its quality management system, and through the combination of effective quality control of the whole process with the focus on prevention and advanced testing equipment. We also keep learning and bench-marking with international leading manufacturers, while absorbing of advanced technology to enhance the competitiveness of our products.

Jinqiu chain is committed to growing into a leader in industrial chains. What Jinqiu chain pursue is not the relationship between buying and selling, but the relationship between long-term sustainable partners.

Jinqiu chain, it is your right choice and decision.





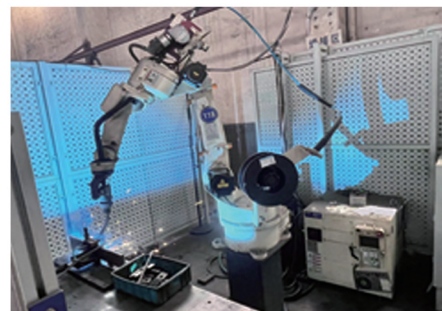
COMPANY BUILDINGS
公司厂房





MAIN EQUIPMENT

主要设备

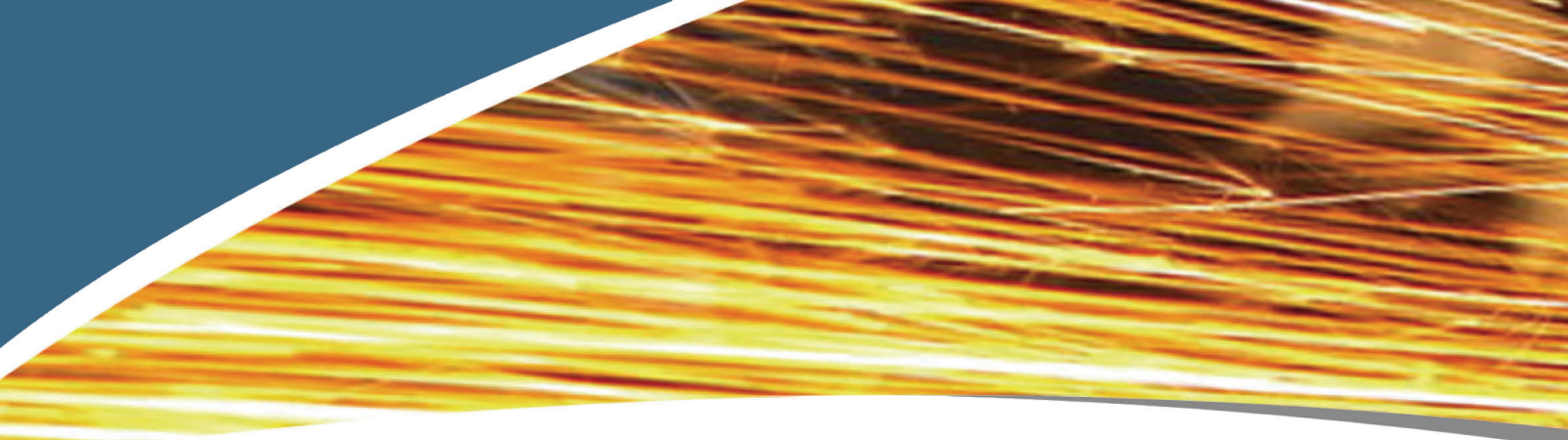




PRODUCTION WORKSHOPS

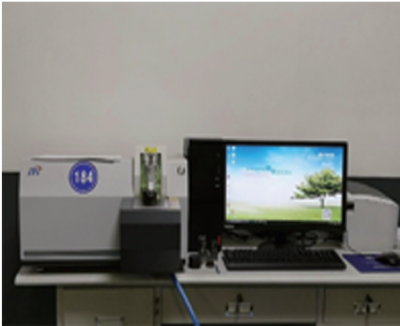
生产车间





QUALITY INSPECTION EQUIPMENT

质检设备



COMPANY PATENTS 公司专利





JIANGSU JINQIU CHAIN TRANSMISSION CO., LTD

ISO9001:2000



COMPANY PATENTS 公司专利





ISO9001:2015



PRODUCT LIST

1. Engineered pin-bush Conveyor chains and chain sprockets

- a) Welded chain
- b) Metric chain
- c) Scraper chain
- d) Sugar chain (block chain)
- e) heavy duty drive chain
- f) Steel mill chain
- g) Water purification screen transfer chain
- h) Crawler asphalt
- i) Bucket elevator
- j) Chain Cement industry(reclaimer chain for deep-pan and apron conveyor)
- k) palm oil chain
- l) Paper chain
- m) Car plant chain
- n) Escalator chain
- o) Sprocket

2. Roller transmission chain

- p) A Series transmission Chain
- q) B Series transmission Chain
- r) Roller chain with vulcanised elastomer profile
- s) Sidebow chain
- t) Heavy duty Drive Chain
- u) sharp top chain
- v) agricultural chain
- w) Accumulation roller chain

3. Leaf chain

- x) Call chain

4. Flat top chain

5. Drop-forged chain & round link chain

- y) Forged links
- z) Rivetless chain and trolley
- aa) Cast drag chain

6. Sprocket

7. Components

8. Chain tools & lubrication

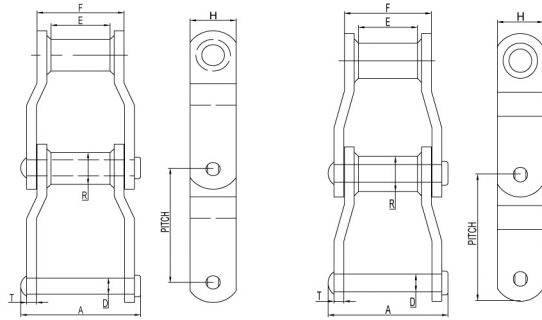


ISO9001:2015



WELDED STEEL CHAINS FOR FEED & WASHING TABLES

- WR chains have only thru-hardened rivets.
- WH chains have all parts thru-hardened.
- WHX chains have thru-hardened parts and induction hardened rivets as standard.
- Riveted construction is standard. Pin and cottered construction can be furnished on a made-to-order basis.



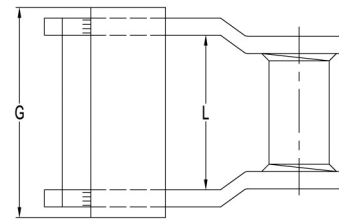
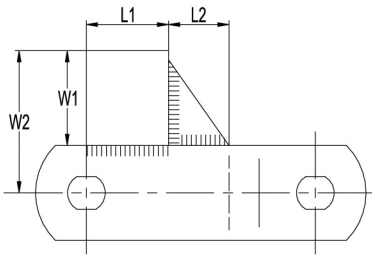
Chain No.	Average Pitch	E(mm)	Sidebar		Pin		Barrel	F (mm)	Min.Ult. Strength (KN)	Avg. Weight chain kg/FT
			T(mm)	H(mm)	D (mm)	A(mm)	R (mm)			
WH78	66.27	25.40	6.40	31.75	12.70	75.00	21.34	51.00	146.80	2.00
WH78XHD	66.95	25.40	9.50	31.75	14.29	82.00	25.40	50.80	163.50	2.80
WH82	78.10	28.58	6.40	31.75	14.29	82.30	25.40	57.15	160.00	2.20
WH82XHD	78.10	28.60	9.70	38.10	19.05	96.50	31.75	60.90	254.00	3.90
WH9103HD	78.11	31.80	9.70	38.10	19.10	92.30	31.80	57.90	287.00	4.00
WH124	101.60	38.10	9.70	38.10	19.05	107.00	31.75	71.40	250.00	3.60
WH124XHD	103.20	38.10	12.70	50.80	25.40	119.50	44.45	76.20	542.00	6.40
WH111	120.90	57.10	9.60	38.10	19.00	123.90	31.70	85.80	254.00	3.64
WH106	152.40	38.10	9.70	38.10	19.05	107.00	31.75	69.85	250.00	3.00
WH720C	152.40	28.58	9.70	38.10	19.05	96.75	31.75	60.32	254.00	2.95
WH110	152.40	47.70	9.60	38.10	19.00	117.30	31.70	76.20	357.00	2.14
WH106XHD	153.67	38.10	12.70	50.80	25.40	120.20	44.45	76.20	542.00	5.60
WH132	153.67	76.20	12.70	50.80	25.40	156.00	44.45	112.30	542.00	6.50
WH132XHD	153.67	76.20	15.88	50.80	25.40	168.86	44.45	118.60	543.00	6.90
WH150	153.67	76.20	12.70	63.50	25.40	156.00	44.50	112.30	620.00	7.40
WH155	153.67	73.20	12.70	63.50	28.40	158.70	41.10	111.20	771.00	7.71
WH157	153.67	76.20	15.90	63.50	29.10	171.00	44.50	117.50	820.00	9.20
WH150XHD	153.67	76.20	15.70	63.50	28.40	171.40	41.10	117.30	920.00	7.98
WH159	155.57	69.85	15.90	76.20	31.75	170.50	50.80	117.50	950.00	11.30



ISO9001:2015

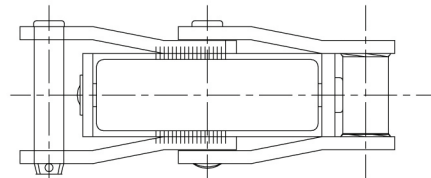
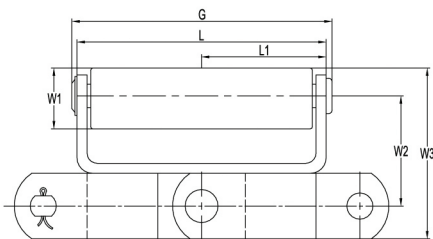
MILL CHAIN ATTACHMENTS

WHX150 Block Attachment



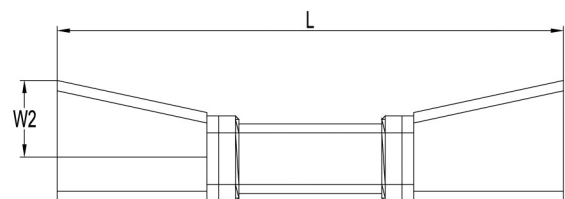
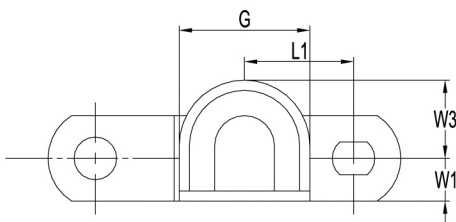
Chain No.	W1	W2	G	L(min)	L1	L2
WHX150	50	120.5	152	116.00	50.00	45.00
WHX150	70	133.5	152	116.00	50.00	45.00

WR78-F20 Attachment



Chain No.	W1	W2	W3	G	L	L1
WR78	32.00	46.60	78.50	121.00	111.00	55.50

WH132 C cradle



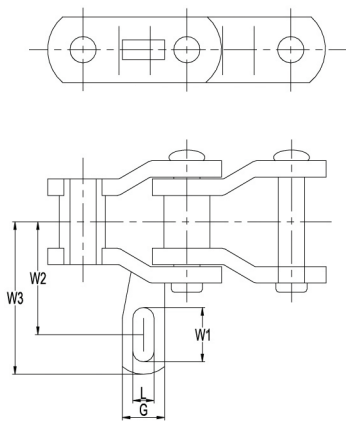
Chain No.	W1	W2	W3	G	L	L1
WH132 C cradle	25.40	50.80	25.40	88.90	279.40	66.55



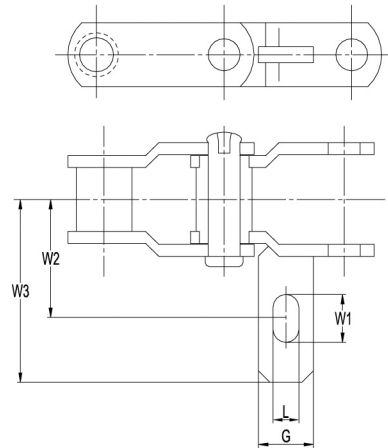
ISO9001:2015

WELDED STEEL MILL CHAINS WITH ATT

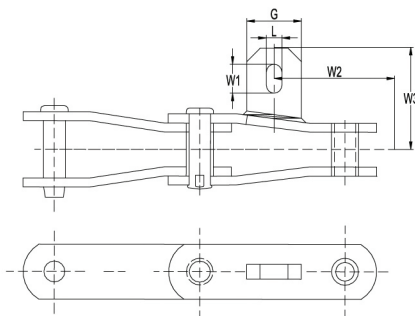
A22 Attachment



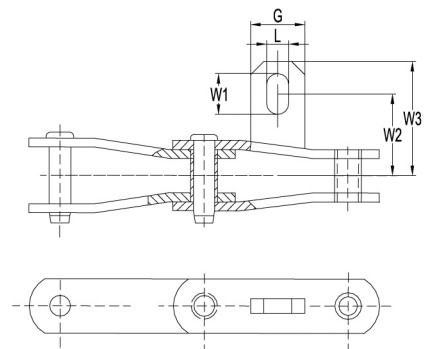
I



R



V



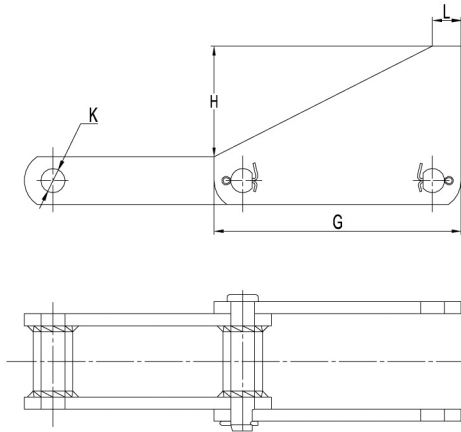
F

Chain No.	style	W1	W2	W3	L	G
WH144	I	38.10	101.60	152.40	20.62	50.80
WH124XXXHD	R	52.40	109.52	150.82	20.65	50.80
WH166 PLUS	V	28.50	95.25	125.00	20.64	63.50
WH144 PLUS	F	38.10	101.60	152.40	20.62	50.80

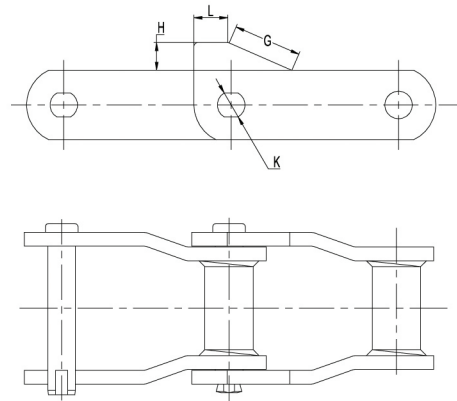


ISO9001:2015

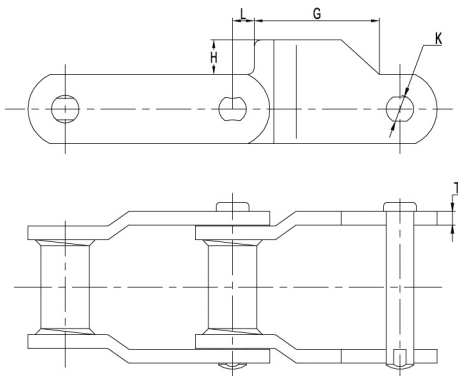
WELDED STEEL Mill CHAINS WITH ATT



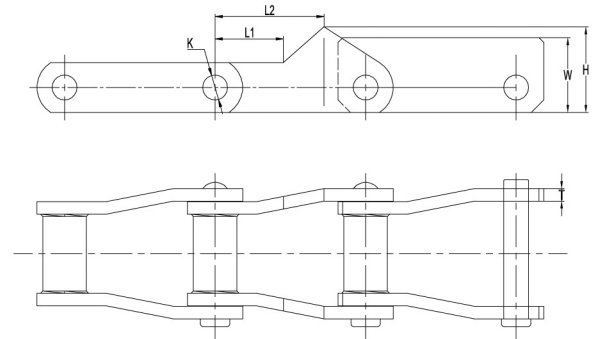
X



Y



Z



S

Chain No.	Style	K	L	G	H
WC110-AS1	X	19.36	23.00	198.40	88.95
WH150-S1	Y	25.40	31.75	63.50	25.40
WH150-S4	Z	25.4	19.05	118.16	39.87

Chain NO.	Style	A			B		
		L1	L2	W	K	H	T
WH132'A&'B'	S	69.80	111.13	87.33	25.40	76.20	15.08

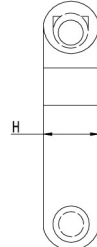
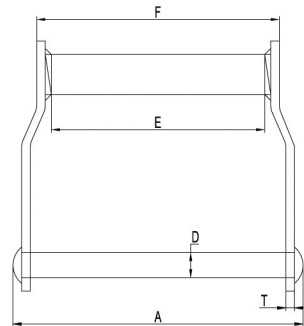
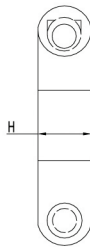
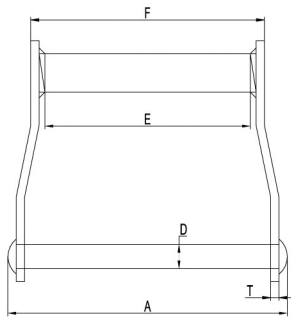


ISO9001:2015

WELDED STEEL DRAG CHAINS

WDH SERIES

- WDH Series have all parts thru-hardened.
- Riveted construction is standard. Pin and cottered construction can be furnished on a made-to-order basis.

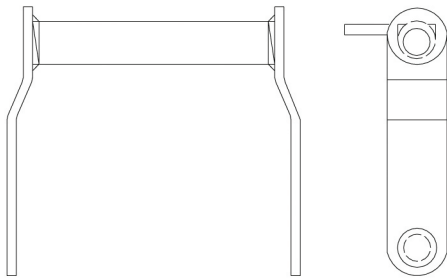


Chain No.	Average Pitch	E(mm)	Sidebar		Pin		F(mm)	Min.Ult. Strength (KN)
			T(mm)	H(mm)	D(mm)	A(mm)		
WDH102	127.0	162.00	9.70	38.10	19.05	232.50	197.00	226.7
WDH104	152.4	104.78	9.70	38.10	19.05	173.30	136.53	226.7
WDH110	152.4	228.60	9.70	38.10	19.05	296.00	260.50	235.0
WDH113	152.4	228.60	12.70	38.10	22.23	311.50	270.20	297.8
WDH120	152.4	222.25	12.70	50.80	22.23	301.60	260.35	311.5
WDH112	203.2	228.60	9.70	38.10	19.05	296.00	260.50	250.0
WDH116	203.2	330.20	9.53	44.45	19.05	395.00	358.78	250.0
WDH118	203.2	336.55	12.70	50.80	22.35	425.45	377.90	400.5
WDH480	203.2	279.40	12.70	50.80	22.23	366.90	323.85	311.5
WDH480XHD	203.2	279.40	15.88	50.80	25.40	380.85	330.20	543.0

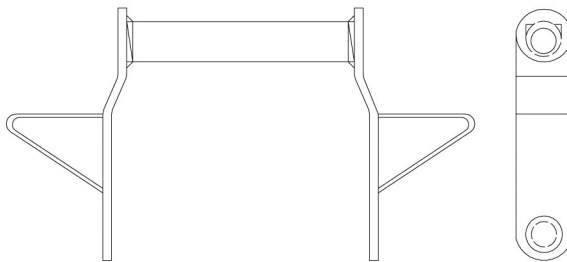


WELDED STEEL DRAG CHAINS

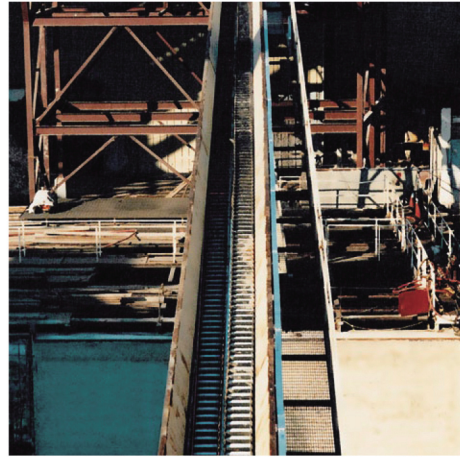
C1 and W1 Attachment



C1 Attachment



W1 Attachment



Chain No.	Average Pitch	E(mm)	Sidebar		Pin		F(mm)	Min.Ult. Strength (KN)
			T(mm)	H(mm)	D(mm)	A(mm)		
WDH102	127.0	162.00	9.70	38.10	19.05	232.50	197.00	226.7
WDH104	152.4	104.78	9.70	38.10	19.05	173.30	136.53	226.7
WDH110	152.4	228.60	9.70	38.10	19.05	296.00	260.50	235.0
WDH113	152.4	228.60	12.70	38.10	22.23	311.50	270.20	297.8
WDH120	152.4	222.25	12.70	50.80	22.23	301.60	260.35	311.5
WDH112	203.2	228.60	9.70	38.10	19.05	296.00	260.50	250.0
WDH116	203.2	330.20	9.53	44.45	19.05	395.00	358.78	250.0
WDH118	203.2	336.55	12.70	50.80	22.35	425.45	377.90	400.5
WDH480	203.2	279.40	12.70	50.80	22.23	366.90	323.85	311.5
WDH480XHD	203.2	279.40	15.88	50.80	25.40	380.85	330.20	543.0

We are able to custom manufacture attachments per your specific request.

JIANGSU JINQIU CHAIN TRANSMISSION CO., LTD
<https://jqchain.en.alibaba.com>



ISO9001:2015

Add: No.88 North Huang Dong Rd. Huangli Town, Chang Zhou, JiangSu, China.

Tel: (86) 519-83348588 Fax: (86) 519-83341062

Website: www.jqchain.com E-Mail: Sales@jqchains.com