



ISO9001:2015



CHAINS AND SPROCKETS



FOR SUGAR INDUSTRY

*JINQIU CHAIN TRANSMISSION*





## ABOUT US

# 公司简介

江苏金球链传动有限公司成立于1989年，金球链条已成为中国领先的产业链制造商。工厂占地面积6万多平方米，有8个专业生产车间，员工300多人，其中技术、研发人员50人。

金球一直致力于链条的研发、制造和销售。公司拥有400吨冲床、焊接机器人、激光切割设备、真空炉、多用炉、网带炉、光谱仪、100吨拉力机等以及300多台先进的生产和检测设备。年生产能力10000吨。

金球已开发出输送链、传动链、驱动链等复杂的产品家族。主要产品有焊接链、棕榈油链、糖链、水泥链、工程链、汽车及工程机械地面总装输送线、涂装输送线链条等。广泛应用于木材工业、棕榈油工业、制糖工业、食品工业、造纸工业、水处理工业、采矿业、水泥冶金、汽车、工程机械等行业。

金球设计，制造和组装链条的所有部件，以确保我们提供的产品符合客户的高标准。我们拥有一支充满活力的管理团队，经验丰富的技术人员和熟练的工人，为您提供高品质的产品。我们的产品远销世界各地，受到国内外市场的高度认可。

金球通过建立和完善质量管理体系，将有效的全过程质量控制与预防为主、先进的检测设备相结合，不断提高产品质量。我们也不断向国际领先的制造商学习，同时吸收相关的先进技术，以提高我们产品的竞争力。

金球链条传动世界，我们执著于成长为工业链条的领先者。金球追求的不是买与卖的关系，而是长期稳定合作伙伴的关系。

金球，这是您正确的选择和决定。

Jiangsu Jinqiu Chain Transmission Co., LTD., was founded in 1989, It is a leading industrial chain manufacturer in China. The factory covers an area of more than 60,000 square meters, with 8 specialized production workshops, over 300 employees and including 50 in engineering and product developing.

Jinqiu chain has been devoting ourselves to chains' research and development, manufacturing and sales. We have 400 Ton punching machines, 100 Ton tensile machine, various welding robots and laser cutting equipment, Vacuum furnace, multi-purpose furnace, mesh belt furnace, spectrometer, and over 300 sets advanced production and testing equipment. Annual production capacity is 10,000 tons.

Jinqiu chain has developed a complex product family of conveyor chain, transmission chain, driving chain. Main products are welded chain, palm oil chain, sugar chain, cement chain, engineering chain, automotive and construction machinery ground assembly conveyor chain, coating conveyor chain etc. They are widely applied in the industries as wood, palm oil, sugar, cement metallurgy, construction machinery, food, water purification screen transfer, car plant, paper, crawler asphalt, construction paver chain, mining and other industries.

Jinqiu chain designs, manufactures and assembles all the parts of the chain to ensure that the products we deliver meeting the customers' high standards. We have a dynamic management team, experienced technicians and skilled workers to provide you with high quality products. Products are sold widely all over the world, and highly recognized by domestic and global markets.

Jinqiu chain keeps improving its product quality by establishing and upgrading its quality management system, and through the combination of effective quality control of the whole process with the focus on prevention and advanced testing equipment. We also keep learning and bench-marking with international leading manufacturers, while absorbing of advanced technology to enhance the competitiveness of our products.

Jinqiu chain is committed to growing into a leader in industrial chains. What Jinqiu chain pursue is not the relationship between buying and selling, but the relationship between long-term sustainable partners.

Jinqiu chain, it is your right choice and decision.







COMPANY BUILDINGS  
公司厂房

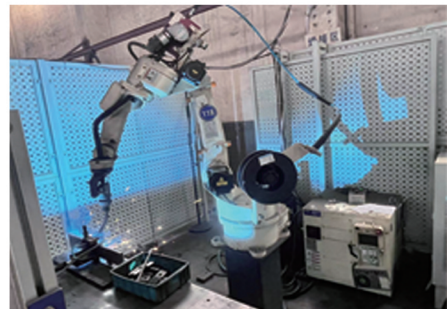






# MAIN EQUIPMENT

## 主要设备







# PRODUCTION WORKSHOPS

## 生产车间







# JIANGSU JINQIU CHAIN TRANSMISSION CO., LTD

## COMPANY PATENTS 公司专利







## **PRODUCT LIST**

### **1. Engineered pin-bush Conveyor chains and chain sprockets**

- a) Welded chain
- b) Metric chain
- c) Scraper chain
- d) Sugar chain (block chain)
- e) heavy duty drive chain
- f) Steel mill chain
- g) Water purification screen transfer chain
- h) Crawler asphalt
- i) Bucket elevator
- j) Chain Cement industry(reclaimer chain for deep-pan and apron conveyor)
- k) palm oil chain
- l) Paper chain
- m) Car plant chain
- n) Escalator chain
- o) Sprocket

### **2. Roller transmission chain**

- p) A Series transmission Chain
- q) B Series transmission Chain
- r) Roller chain with vulcanised elastomer profile
- s) Sidebow chain
- t) Heavy duty Drive Chain
- u) sharp top chain
- v) agricultural chain
- w) Accumulation roller chain

### **3. Leaf chain**

- x) Call chain

### **4. Flat top chain**

### **5. Drop-forged chain & round link chain**

- y) Forged links
- z) Rivetless chain and trolley
- aa) Cast drag chain

### **6. Sprocket**

### **7. Components**

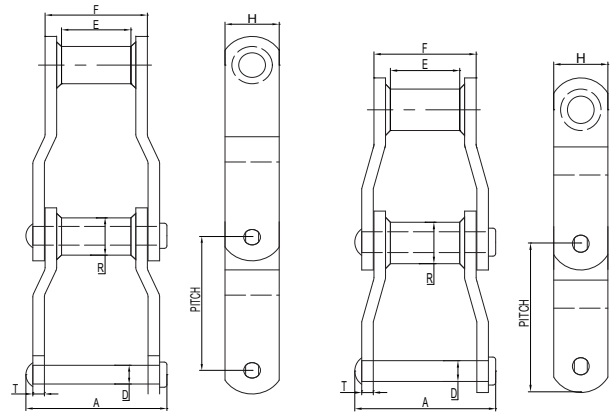
### **8. Chain tools & lubrication**





## WELDED STEEL CHAINS FOR FEED & WASHING TABLES

- WR chains have only thru-hardened rivets.
- WH chains have all parts thru-hardened.
- WHX chains have thru-hardened parts and induction hardened rivets as standard.
- Riveted construction is standard. Pin and cottered construction can be furnished on a made-to-order basis.



Chain No.	Average Pitch	E(mm)	Sidebar		Pin		Barrel	F (mm)	Min.Ult. Strength (KN)	Avg. Weight chain kg/FT
			T(mm)	H(mm)	D (mm)	A(mm)	R (mm)			
WH78	66.27	25.40	6.40	31.75	12.70	75.00	21.34	51.00	146.80	2.00
WH78XHD	66.95	25.40	9.50	31.75	14.29	82.00	25.40	50.80	163.50	2.80
WH82	78.10	28.58	6.40	31.75	14.29	82.30	25.40	57.15	160.00	2.20
WH82XHD	78.10	28.60	9.70	38.10	19.05	96.50	31.75	60.90	254.00	3.90
WH9103HD	78.11	31.80	9.70	38.10	19.10	92.30	31.80	57.90	287.00	4.00
WH124	101.60	38.10	9.70	38.10	19.05	107.00	31.75	71.40	250.00	3.60
WH124XHD	103.20	38.10	12.70	50.80	25.40	119.50	44.45	76.20	542.00	6.40
WH111	120.90	57.10	9.60	38.10	19.00	123.90	31.70	85.80	254.00	3.64
WH106	152.40	38.10	9.70	38.10	19.05	107.00	31.75	69.85	250.00	3.00
WH720C	152.40	28.58	9.70	38.10	19.05	96.75	31.75	60.32	254.00	2.95
WH110	152.40	47.70	9.60	38.10	19.00	117.30	31.70	76.20	357.00	2.14
WH106XHD	153.67	38.10	12.70	50.80	25.40	120.20	44.45	76.20	542.00	5.60
WH132	153.67	76.20	12.70	50.80	25.40	156.00	44.45	112.30	542.00	6.50
WH132XHD	153.67	76.20	15.88	50.80	25.40	168.86	44.45	118.60	543.00	6.90
WH150	153.67	76.20	12.70	63.50	25.40	156.00	44.50	112.30	620.00	7.40
WH155	153.67	73.20	12.70	63.50	28.40	158.70	41.10	111.20	771.00	8.61
WH157	153.67	76.20	15.90	63.50	29.10	171.00	44.50	117.50	820.00	9.20
WH150XHD	153.67	76.20	15.70	63.50	28.40	171.40	41.10	117.30	920.00	7.98
WH159	155.57	69.85	15.90	76.20	31.75	170.50	50.80	117.50	950.00	11.30

IBR or fully heat treated parts plus induction hardened barrels and rivets.





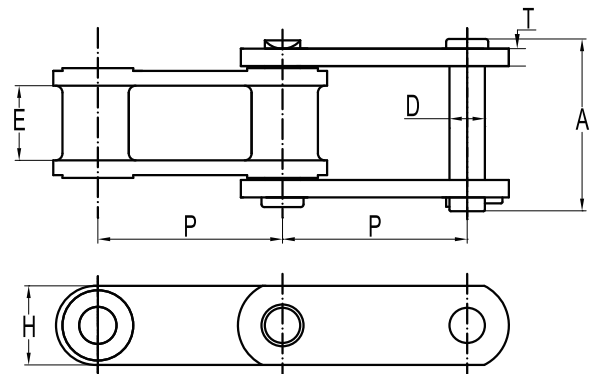
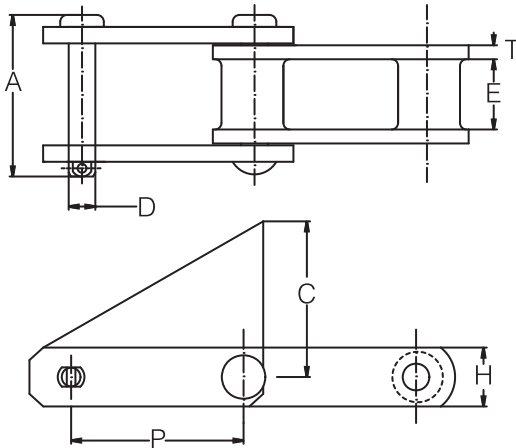
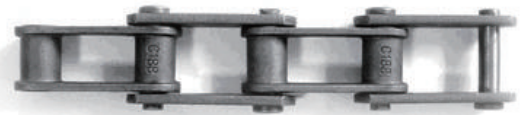
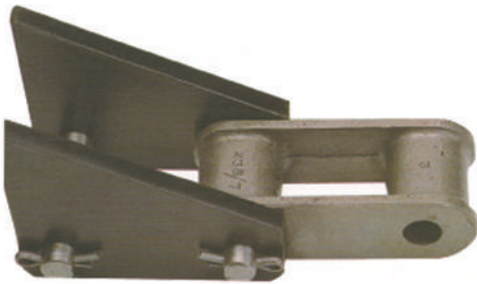
ISO9001:2015

JIANGSU JINQIU CHAIN TRANSMISSION CO., LTD



## COMBINATION CHAINS FOR FEED & WASHING TABLES

- Combination Chains (C Type & BRH Type)

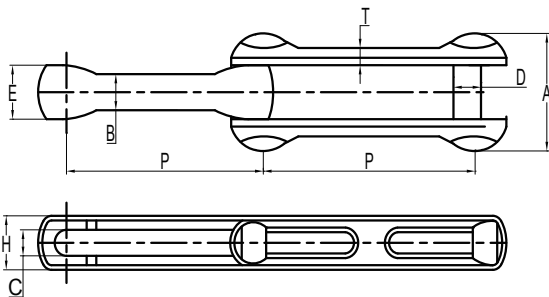


Chain No.	Pitch	E(mm)	Sidebar		Pin		R( mm)	Min.Ult. Strength Q(KN)	Weight KG/FT
			T(mm)	H(mm)	D( mm)	A(mm)			
C55	41.43	17.48	4.75	19.05	9.53	50.03	18.25	57.00	0.91
C77	58.62	17.48	4.75	22.23	11.10	53.59	18.25	67.50	1.04
C188	66.27	23.80	6.35	28.58	12.70	68.32	22.25	84.00	1.63
BRH188	66.27	23.80	5.80	28.58	12.70	--	--	62.30	2.00
C131	78.10	28.50	9.53	38.10	15.88	92.20	31.75	146.30	2.95
C102B	101.60	50.80	9.53	38.10	15.88	113.54	25.40	146.30	3.08
C111	120.90	60.33	9.53	44.45	19.05	130.30	36.50	220.30	4.45
C110	152.40	49.20	9.53	38.10	15.88	113.53	32.51	146.30	2.72
C132	153.67	79.38	12.70	50.80	25.40	165.35	45.21	305.90	6.58

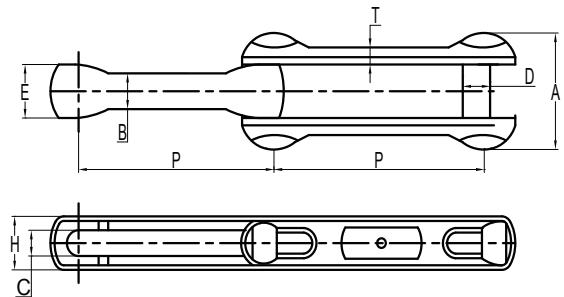


## DROP FORGED CHAINS FOR FEED AND WASHING TABLES

- Drop Forged Rivetless chains are typically used as overhead conveyors on automotive assembly lines, paint lines, appliance assembly lines, sugar mills and in the meat packaging industry.
- These chains have no rotating parts, therefore suffer less from the abrasion caused by sand/dirt, that can come into the mill with the cane. All parts are heat-treated and "T" pins ensure positive locking action in the sidebars.



Regular Type



X Type

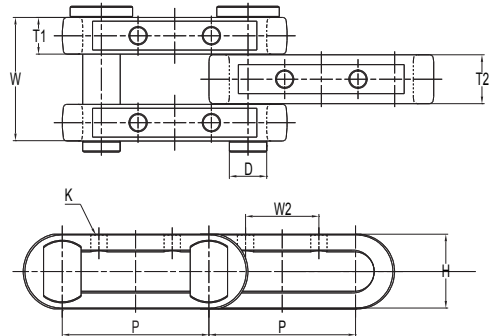
Chain No	Average Pitch	E(mm)	sidebar		Pin		B(mm)	C(mm)	Min.Ult. Strength Q(KN)
			T(mm)	H(mm)	D(mm)	A(mm)			
468HT	102.39	41.28	11.43	47.75	19.05	84.07	29.51	22.23	311.5
678HT	153.19	33.32	18.29	50.80	22.23	76.96	21.34	25.40	378.3
698HT	153.19	39.67	15.06	68.33	28.58	95.25	26.19	31.75	602.9
998HT	229.39	39.67	8.26	64.01	28.58	98.43	25.40	28.58	602.9
X348	76.99	19.05	10.41	26.92	12.70	44.45	13.21	14.27	106.8
X458	102.39	25.91	12.19	36.58	15.88	55.58	16.76	17.48	213.6
X678	153.19	33.32	18.29	50.80	22.23	76.96	21.34	25.40	378.3



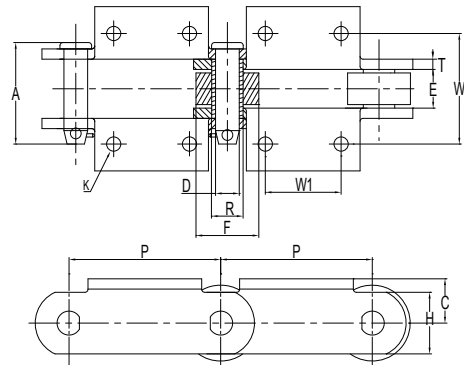
ISO9001:2015

JIANGSU JINQIU CHAIN TRANSMISSION CO., LTD

## MAIN CANE&AUXILLIARY CARRIER CHAINS



Chain No	Pitch P	Dimension							Weight KG/FT	Ultimate Tensile Q(KN)
		D	H	K	T1	T2	W	W2		
P=6"	152.4	38.9	77.8	17.0	38.1	50.8	128.5	76.2	12.30	1423
P=9"	228.6	38.9	80.0	17.0	40.0	50.0	132.0	95.0	9.58	1423

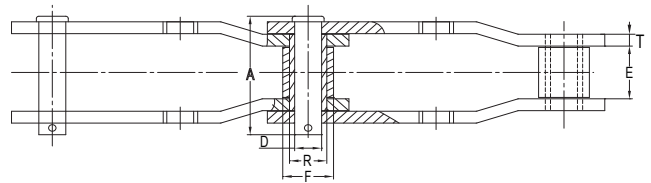
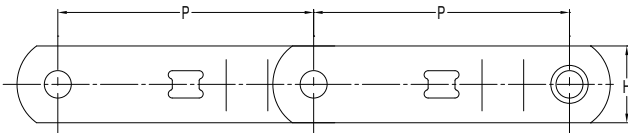
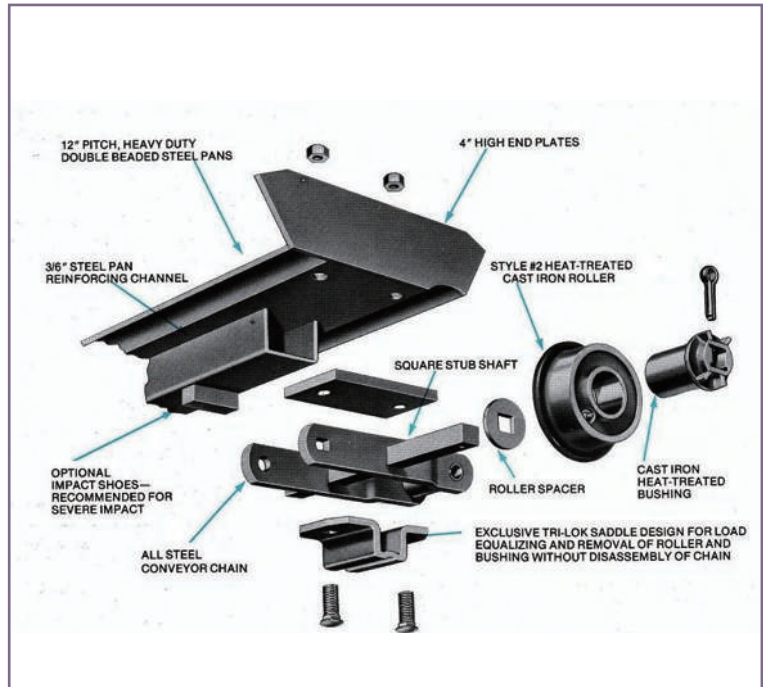


Chain No	Pitch P	E(mm) min	Sidebar		Pin		Bush	Roller	W(mm)	W1(mm)	K(mm)	C(mm)	Average Ultimate Strength Q(KN)
			T(mm)	H(mm)	D(mm)	A(mm)	R(mm)	F(mm)					
0904	101.6	30.99	7.87	44.45	17.53	81.00	25.40	50.80	88.90	36.58	9.65	31.75	220
09060	152.4	38.10	9.65	50.80	19.05	97.00	28.70	69.85	111.125	76.20	12.70	41.40	270
SS996	152.4	38.10	9.65	50.80	19.05	98.40	28.70	69.85	111.125	76.20	12.70	41.40	315
09061	152.4	38.10	9.65	57.15	19.05	97.00	28.70	69.85	111.125	76.20	12.70	41.40	380
1796	152.4	38.10	9.65	57.15	22.23	99.00	31.75	69.85	111.125	76.20	14.27	41.40	450
1797	152.4	38.10	9.65	57.15	22.23	99.00	31.75	76.20	111.125	76.20	14.27	41.40	450
2178	152.4	39.67	9.525	50.80	22.23	95.23	28.70	69.85	143.10	76.20	14.27	41.40	270
2198	152.4	38.10	12.70	60.45	22.10	112.00	31.75	76.20	111.125	76.20	12.70	41.40	450
09063	152.4	38.10	10.41	60.45	23.88	102.10	31.75	76.20	111.125	76.20	12.70	44.45	630
09065	152.4	38.10	12.70	60.45	26.92	107.89	38.10	76.20	111.125	76.20	12.70	42.93	720
113C	152.4	38.40	12.70	65.00	22.20	111.20	31.75	81.00	111.125	76.20	14.30	45.50	420
SS800R	203.2	45.97	12.70	71.37	25.58	124.00	38.10	88.90	131.83	114.30	16.00	55.60	750
B5513	228.6	61.09	16.00	69.85	31.75	142.62	44.45	107.95	203.20	76.20	19.05	69.85	810
C2630	304.8	69.85	16.00	88.90	35.05	133.60	44.45	101.60	203.20	127.00	17.53	69.85	1350

The sidebar can be used Curve Sidebar.

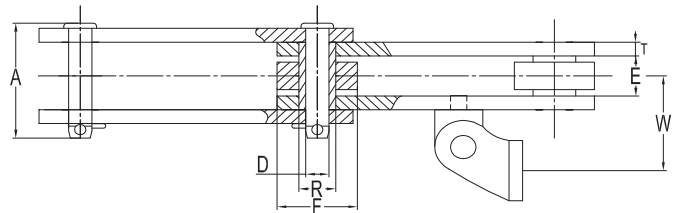
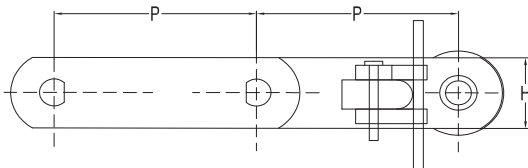
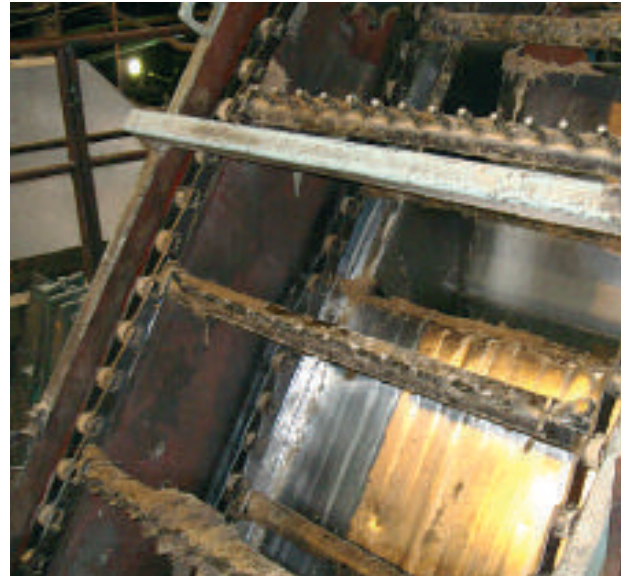
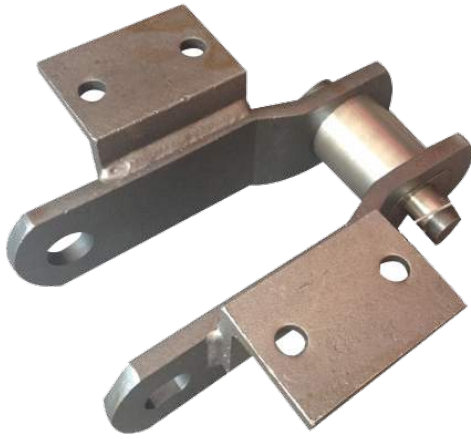


## OUTBOARD ROLLER CANE CARRIER CHAINS

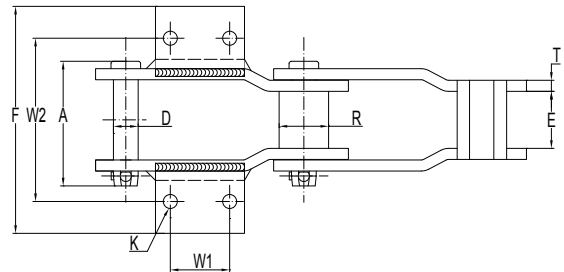
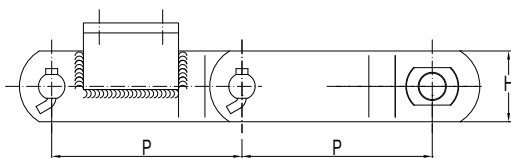


Chain No	Pitch P	E(mm) min	Sidebar		Pin		Bush	Roller	Average Ultimate Strength Q(KN)
			T(mm)	H(mm)	D(mm)	A(mm)			
2397 M14	152.4	55.5	10	63.5	22.2	116.00	31.75	44.5	380
2358 M14	228.6	49.23	12.70	63.50	22.23	154.20	32.20	44.45	472
1707 M14	304.8	76.20	12.70	63.50	25.40	154.76	38.10	57.15	617
2614 M14	304.8	69.85	15.88	88.90	31.75	161.90	44.30	63.50	900
2630 M14	304.8	69.85	15.88	88.90	34.90	162.70	47.75	63.50	980
12220 M14	304.8	70.64	15.88	101.60	38.10	161.44	53.98	79.38	1125
1223 M14	304.8	70.61	15.88	101.60	38.10	195.58	53.98	88.90	1350
2648 M14	304.8	92.20	19.05	101.60	41.40	196.85	82.55	101.60	1575

### INTERMEDIATE CARRIER CHAINS



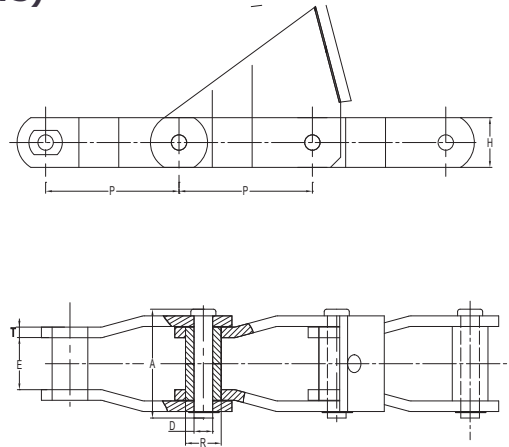
Chain No	Pitch P	E(mm) min	Sidebar		Pin		Bush R(mm)	Roller F(mm)	W(mm)	Average Ultimate Strength Q(KN)
			T(mm)	H(mm)	D(mm)	A(mm)				
1131	152.4	39.63	9.53	50.80	19.05	99.00	28.60	76.20	66.00	209
09060	152.4	38.10	9.65	50.80	19.05	97.00	28.70	69.85	88.90	270
09061	152.4	38.10	9.65	57.15	19.05	97.00	28.70	69.85	88.90	380
09063	152.4	38.10	10.30	61.90	23.83	102.10	31.75	76.20	100.00	630
1796	152.4	38.10	9.65	57.15	22.23	99.00	31.75	69.85	88.90	450
2198	152.4	38.86	12.70	57.15	22.35	112.00	31.75	76.20	99.31	450



Chain No	Pitch P	E(mm)	Sidebar		Pin		Bushing R(mm)	W1(mm)	W2(mm)	F (mm)	K(mm)	Average Ultimate Strength Q(KN)
			T(mm)	H(mm)	D(mm)	A(mm)						
C84	228.60	73.00	14.28	82.06	31.75	160.00	38.00	76.20	209.55	291.31	18.00	1112.00
C69	304.80	69.85	15.88	101.60	35.24	163.00	42.00	106.90	209.60	295.00	20.00	1350.00

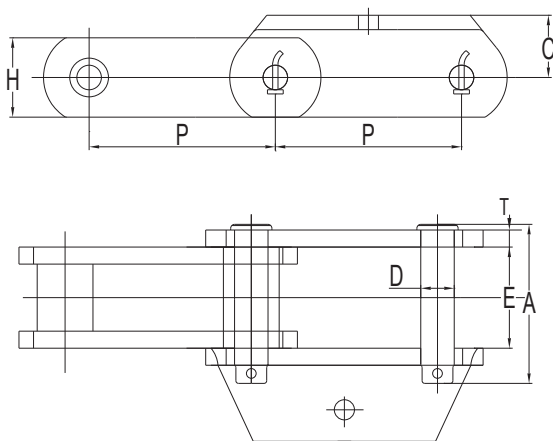


### INTERMEDIATE CARRIER CHAINS (FG ATTACHMENTS)

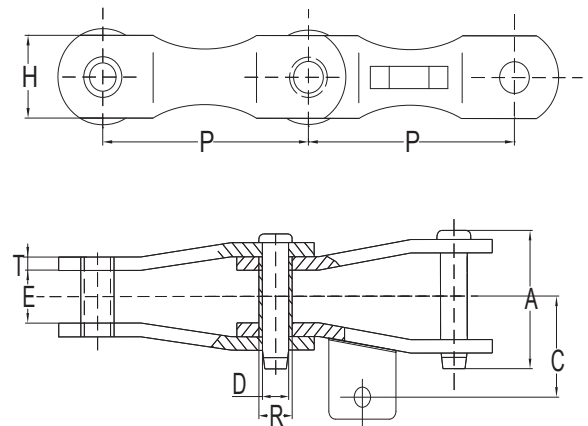


**FG ATTACHMENT**

Chain No	Pitch P	E(mm) min	Sidebar		Pin		Bush	C(mm)	Average Ultimate Strength Q(KN)
			T(mm)	H(mm)	D(mm)	A(mm)	R(mm)		
5002 FG35 E4P	153.67	50.80	13.00	64.00	25.27	127.00	50.80	141.00	400
5025 FG36 E4P	152.4	50.80	12.70	76.20	25.27	127.00	50.80	146.30	520
SS9957SJ	152.4	38.90	12.70	82.60	25.40	56.13	44.50	120.14	445



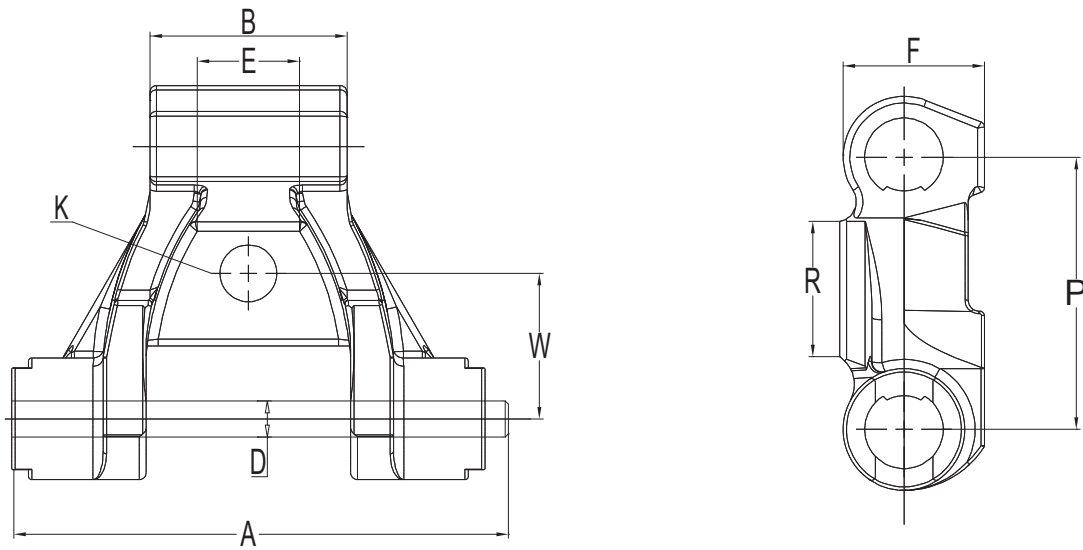
**SS9957SJ**



Chain No	Pitch P	E(mm) min	Sidebar		Pin		R(mm)	C(mm)	Weight KG/FT	Min. Ult Strength Q(KN)
			T(mm)	H(mm)	D(mm)	A(mm)				
32949	203.20	46.0	12.7	80.0	25.4	122.0	38.1	95.0	10.66	588



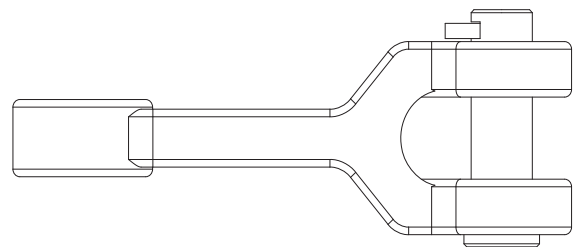
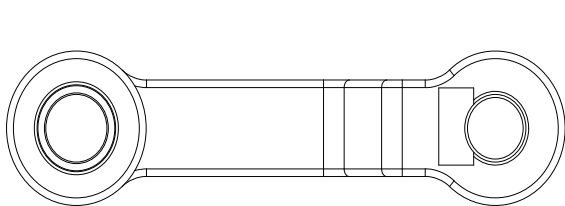
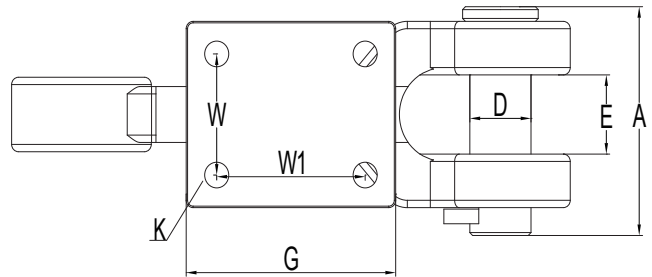
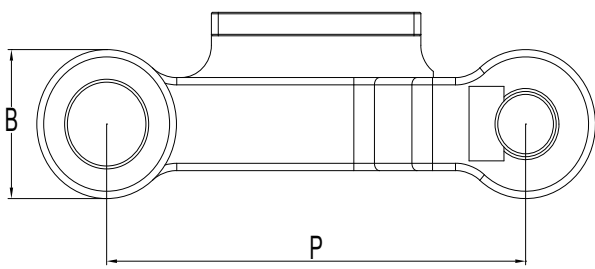
**INTERMEDIATE CARRIER CAST LINK CHAINS**



Chain No	Pitch P	Dimension								Weight KG/FT	Min. Ult Strength Q(KN)
		A	B	D	E	F	K	R	W		
907-E51	80.52	146.5	58.3	16.0	26.0	42.8	16.8	40.0	43.0	5.75	125

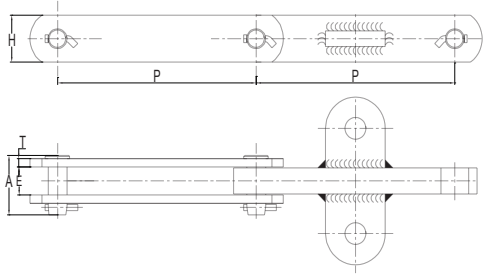


## FORGED INTER CARRIER CHAINS

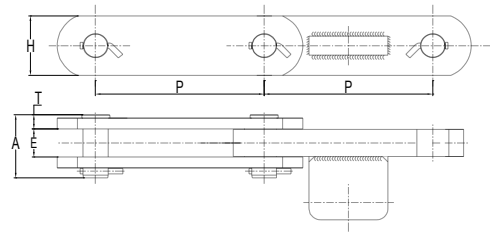


Chain No	Pitch P	Dimension								Weight KG/FT	Min. Ult Strength Q(KN)
		A	B	D	E	G	K	W	W1		
P=9"	228.6	147.0	90.0	40.2	41.0	120.0	17.0	90.0	75.0	12.46	700
P=12"	304.8	156.0	101.6	44.5	54.0	152.4	17.5	82.6	108.0	30.50	880

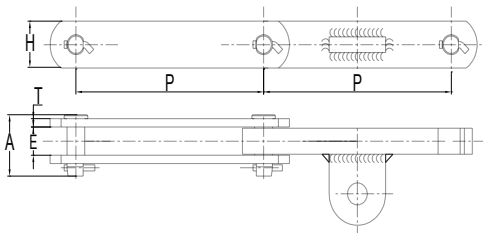
## DIFFUSER CHAINS



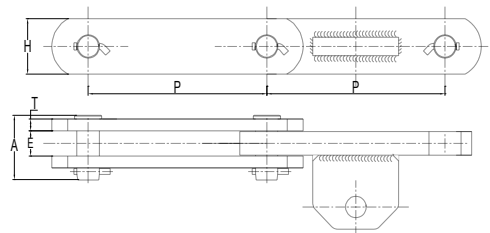
I



II



III

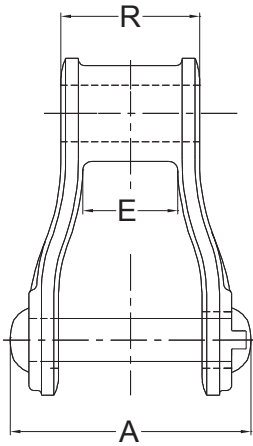


IV

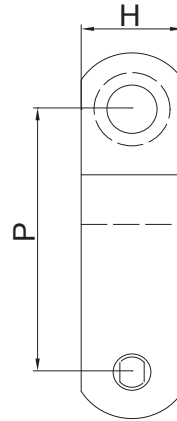
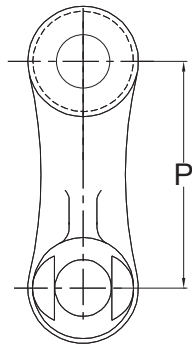
Chain No	Style	Pitch P	E(mm) min	Sidebar		Pin		Bush	Weight KG/FT	Min. Ult Strength Q(KN)
				T(mm)	H(mm)	D(mm)	A(mm)	R(mm)		
Block chain P=200	I	200	27.0	8.0	45.0	19.3	57.0	25.0	2.99	175
Block chain P=200	II	200	27.0	8.0	45.0	19.3	57.0	25.0	2.83	210
Block chain P=250	III	250	34.0	16.0	75.0	31.8	87.4	38.0	8.11	600
Block chain P=300	IV	300	52.0	20.0	110.0	44.3	117.0	50.0	16.69	1350



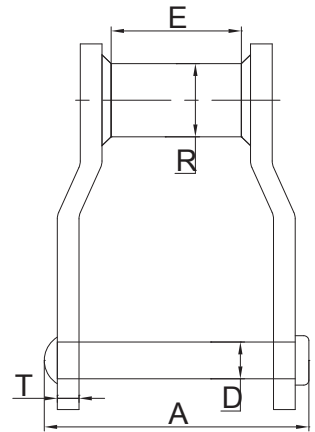
**JUICE STRAINER/CUSH CUSH ELEVATOR**



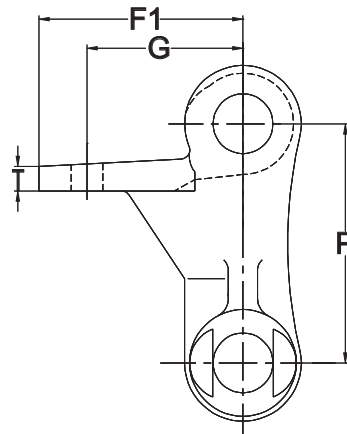
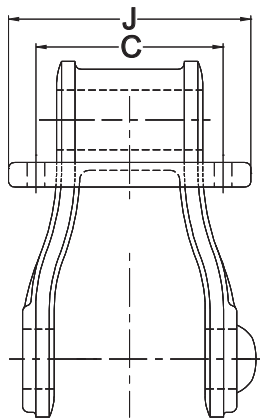
**4103**



**WH9103HD**



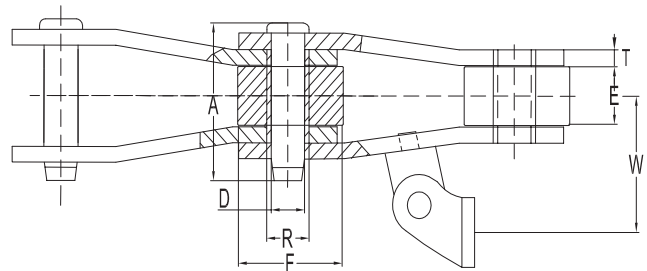
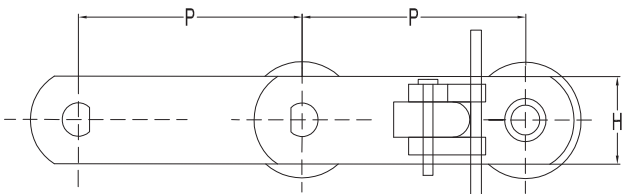
Chain No	Pitch P	E(mm) min	Pin		Bush R(mm)	Weight KG/FT	Min. Ult Strength Q(KN)
			D(mm)	A(mm)			
4103	78.11	28.4	19.1	90.5	47.8	2.5	127.4
WH9103HD	78.11	31.8	19.1	92.3	57.9	3.6	267.3



**4103 WH9103HD  
F29/F30**

Chain No	Dimensions					weight
	C	J	F1	G	T	KG/FT
4103-F29	56.4	79.2	66.5	50.8	10.4	4.36
4103-F30	56.4	79.2	66.5	50.8	10.4	4.36
WH9103HD-F29	56.4	79.2	66.5	50.8	9.7	5.15
WH9103HD-F30	56.4	79.2	66.5	50.8	9.7	5.15

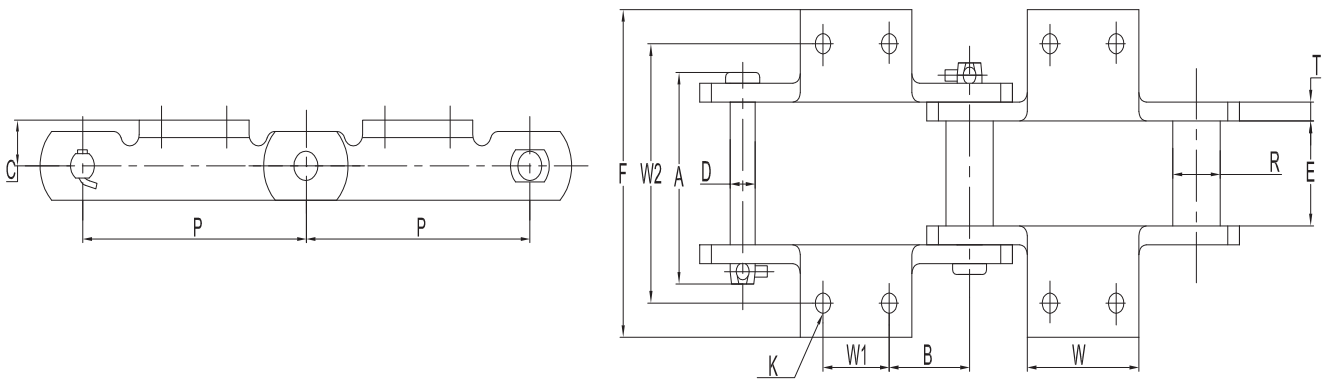
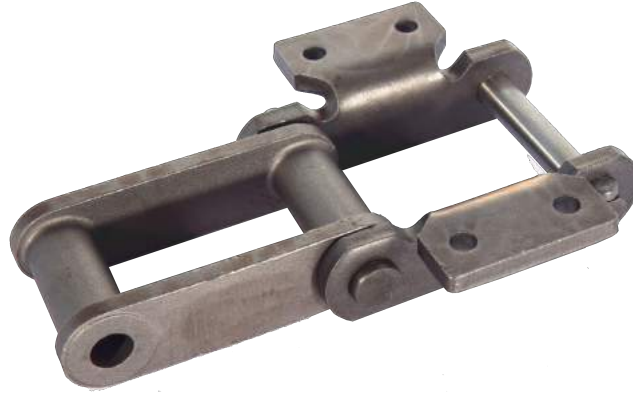
## BAGASSE CONVEYOR AND ELEVATOR CHAINS



Chain No	Pitch P	E(mm) min	Sidebar		Pin		Bush	Roller	W(mm)	Average Ultimate Strength Q(KN)
			T(mm)	H(mm)	D(mm)	A(mm)	R(mm)	F(mm)		
0401	101.6	33.27	9.65	41.40	16.00	89.66	23.88	50.80	57.15	200
3135	152.4	31.75	9.65	50.80	19.05	90.68	28.70	88.90	60.45	250
2184	152.4	34.90	9.50	50.80	22.23	95.20	31.75	76.20	91.90	356
3184	152.4	35.05	9.65	60.45	22.35	109.47	31.75	76.20	65.02	380
09060	152.4	38.10	9.50	50.80	19.05	97.00	28.70	69.85	88.90	270
09061	152.4	38.10	9.65	57.15	19.05	97.00	28.70	69.85	88.90	380
09063	152.4	38.10	10.30	61.90	23.83	102.10	31.75	69.88	100.08	630
1796	152.4	38.10	9.65	57.15	22.23	99.00	31.75	69.85	88.90	450
2198	152.4	38.10	12.70	57.15	22.35	112.00	31.75	69.85	98.55	450
9184	152.4	38.10	12.70	63.50	23.88	112.80	31.75	76.20	98.43	787
9185	152.4	38.10	12.70	63.50	23.88	112.80	31.75	88.90	98.43	787
F9184	152.4	39.60	12.70	63.50	23.88	112.80	31.75	76.20	98.43	787
8184	203.2	45.97	12.70	69.85	25.40	96.77	38.10	88.90	81.79	751.5
B5509	228.6	37.85	9.65	57.15	22.23	76.45	31.75	76.20	79.25	450

Sidebar and attachment according to customers' requirements

## SUGAR BUCKET ELEVATORS

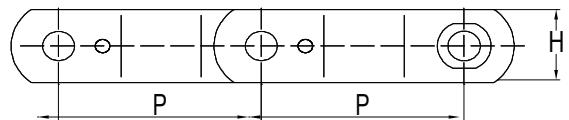
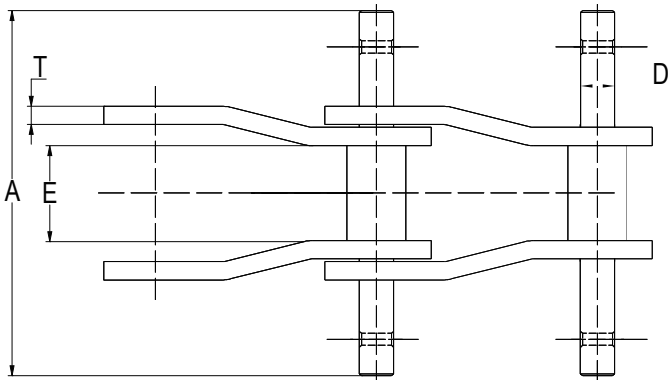
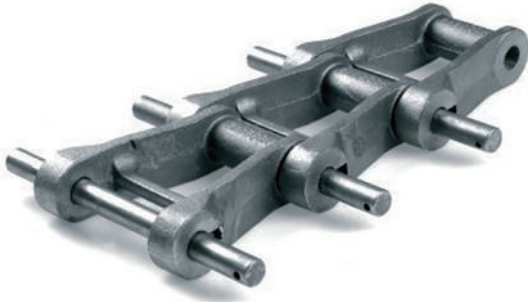


Chain No	Pitch P	E(mm) min	Sidebar		Pin		Bush R(mm)
			T(mm)	H(mm)	D(mm)	A(mm)	
SS102B	101.6	53.8	9.7	38.1	15.7	110.5	25.4
SS111	120.9	66.8	9.7	50.8	19.1	129.6	36.6
SS110	152.4	53.8	9.7	38.1	15.7	110.5	31.8
SS856	152.4	76.2	12.7	63.5	25.4	154.3	44.5

Chain No	K2								Weight Kgs/mt
	B	C	F	K	T	W	W1	W2	
SS102B	28.4	25.4	162.8	10.4	9.7	66.5	44.5	134.9	13.4
SS111	31.2	38.1	190.5	14.2	9.7	91.9	58.7	158.8	22.7
SS110	53.8	25.4	162.1	10.4	9.7	73.2	44.5	134.9	12.8
SS856	47.8	47.8	228.6	14.2	12.7	107.9	57.2	160.3	34.3



**BOILER GRATE CHAINS**



Chain No	Pitch P	E(mm) min	Sidebar		Pin		Weight KG/FT	Min. Ult Strength Q(KN)
			T(mm)	H(mm)	D(mm)	A(mm)		
5309	101.35	52.0	10.0	40.0	15.7	200.0	4.02	140

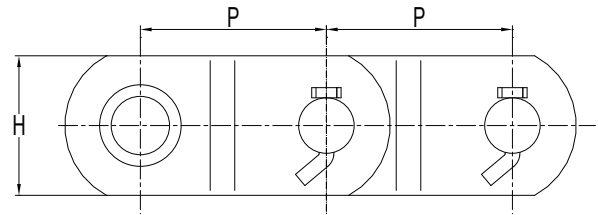
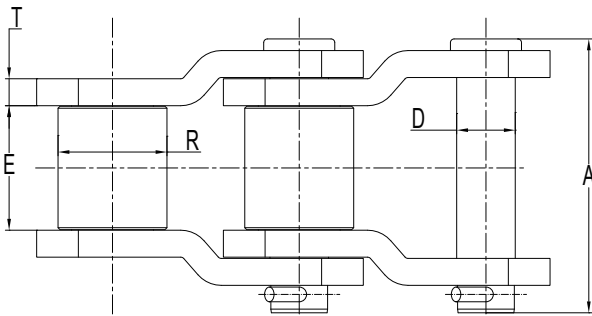


ISO9001:2015

JIANGSU JINQIU CHAIN TRANSMISSION CO., LTD



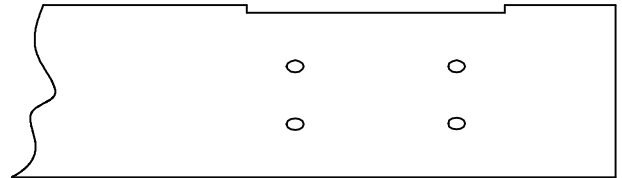
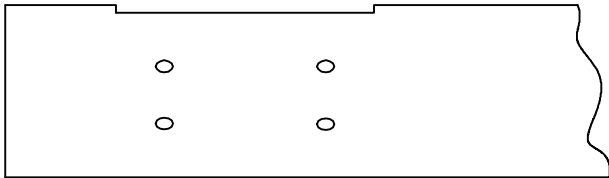
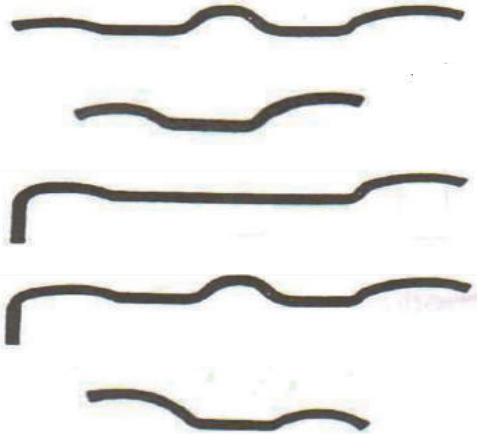
## HEAVY DUTY ROTARY DRIVE CHAINS FOR PEASURE FEEDER ROLLERS



Chain No.	Pitch (mm)	E(mm)	sidebar		Pin		Bush	Average Ultimate Strength Q(KN)
	P	min	T(mm)	H(mm)	D(mm)	A(mm)	R(mm)	
1031	78.11	38.10	7.90	38.10	15.90	85.90	31.80	216.00
1032	78.11	38.10	7.90	41.10	15.90	87.10	31.80	270.00
3075	78.11	38.10	9.70	44.60	16.50	93.70	31.80	337.50
3514	88.90	38.10	12.70	57.20	22.20	112.80	44.50	630.00
1242	103.20	49.20	12.70	57.20	22.20	124.00	44.50	630.00
1245	103.45	49.30	14.20	60.50	23.80	130.00	45.20	765.00
5031	127.00	69.90	15.70	88.90	31.80	158.80	63.50	1395.00
5035	127.00	65.00	19.10	88.90	34.90	168.10	63.50	1575.00
6065	152.40	76.20	19.10	120.70	44.50	185.90	76.20	2700.00
1353	103.89	57.20	15.70	76.20	33.30	146.10	66.50	945.00
6060	152.40	82.60	22.40	127.00	44.50	204.70	88.90	2700.00
6560	165.10	82.60	22.40	127.00	44.50	204.70	88.90	2700.00



**SLATS AND SCRAPER**



ENQUIRY REF: \_\_\_\_\_ QUANTITY: \_\_\_\_\_

CHAIN REF: \_\_\_\_\_ ATTACHMENT: \_\_\_\_\_ STYLE(C,A,G ETC): \_\_\_\_\_

NO. OF STRANDS: \_\_\_\_\_ LENGTH: \_\_\_\_\_ THICKNESS: \_\_\_\_\_

MATERIAL: \_\_\_\_\_ BOLT DIA: \_\_\_\_\_

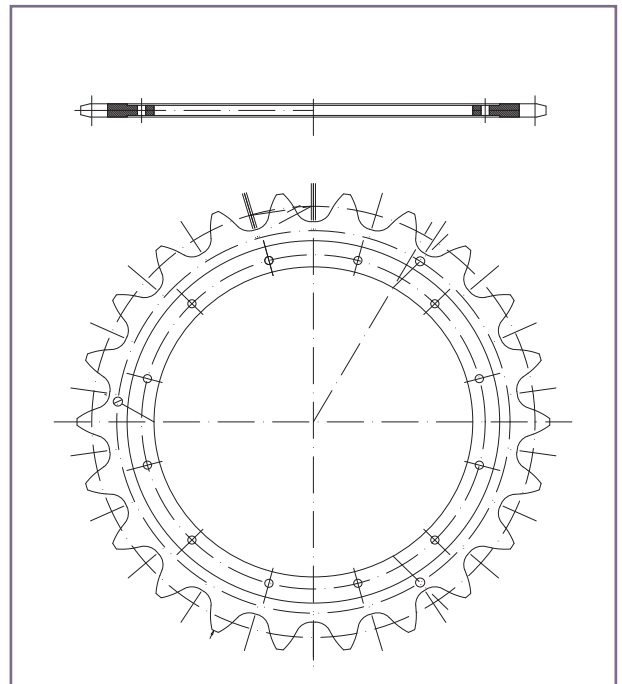
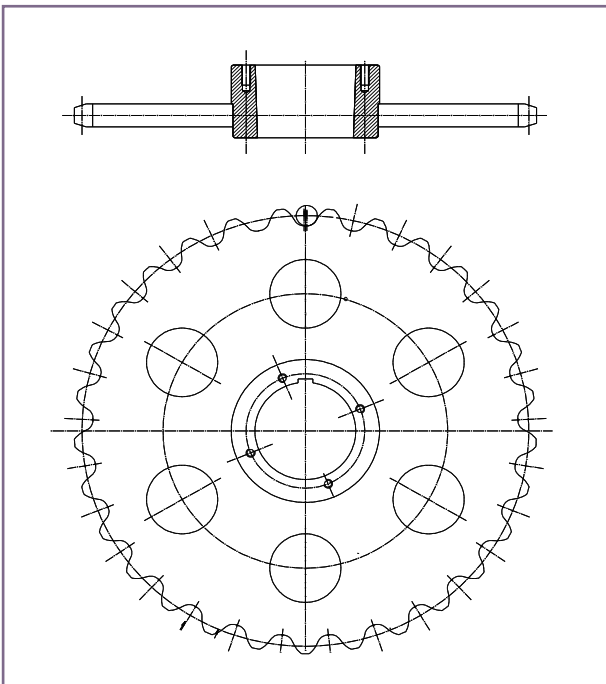
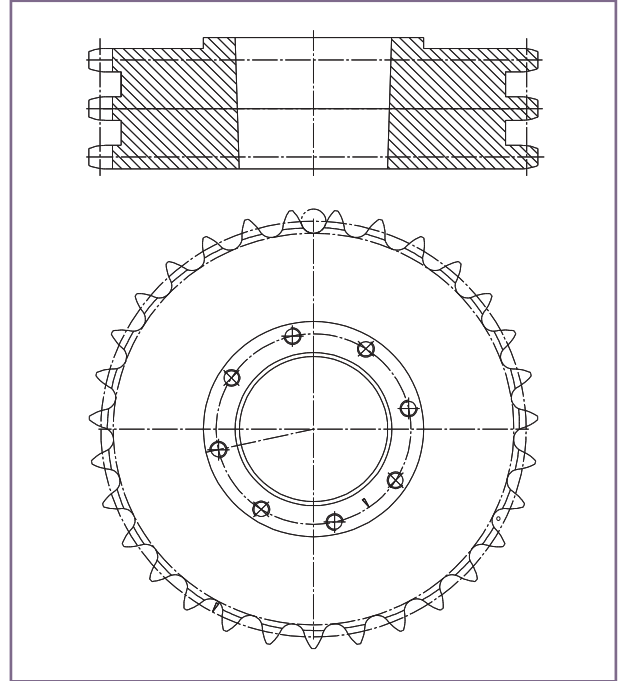
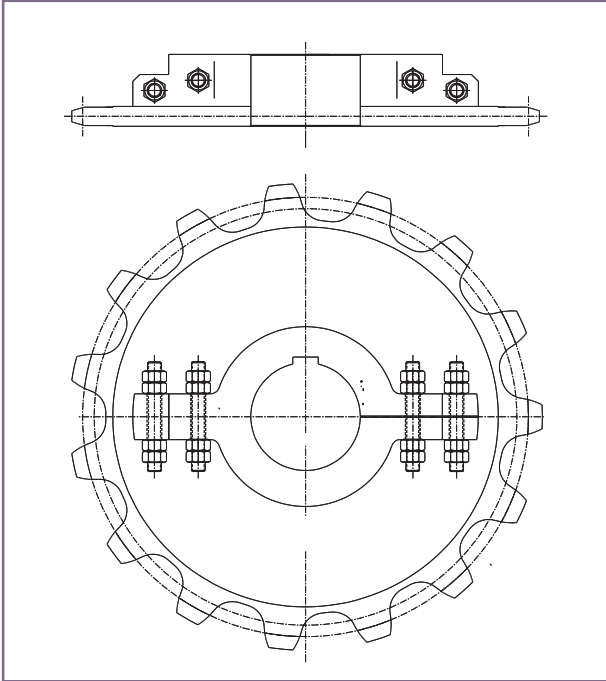
ADDITIONAL INFORMATION: \_\_\_\_\_

\_\_\_\_\_ DRAWING No. \_\_\_\_\_



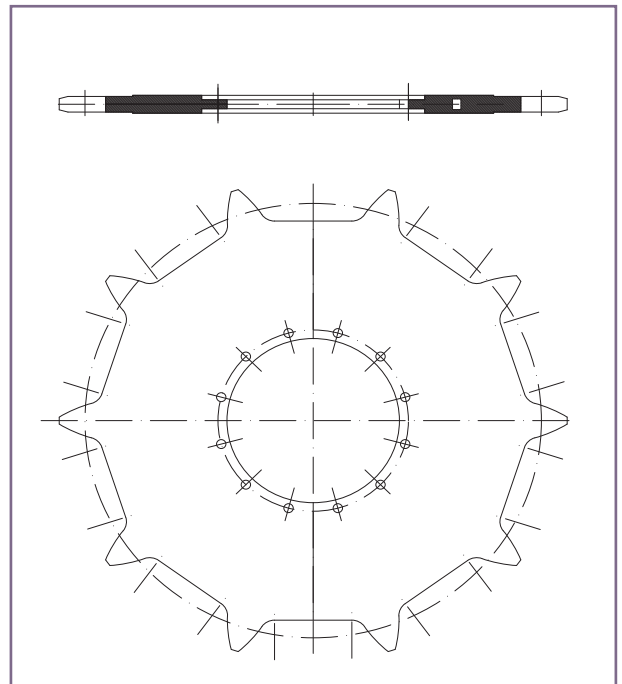
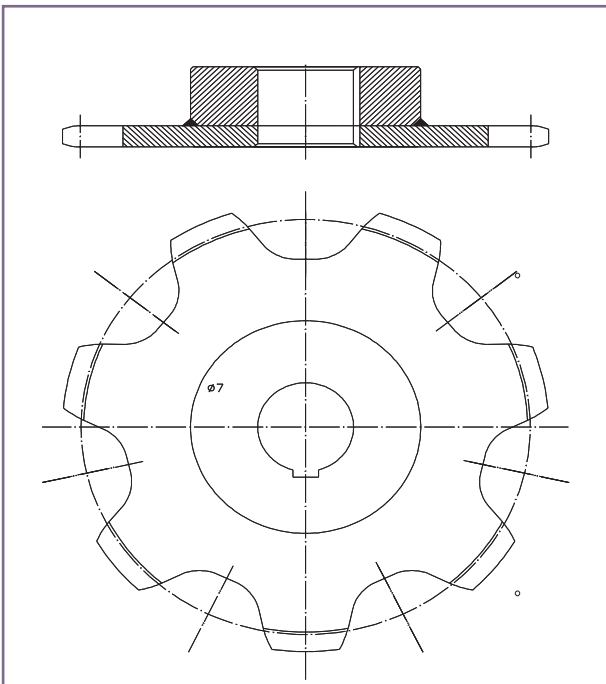
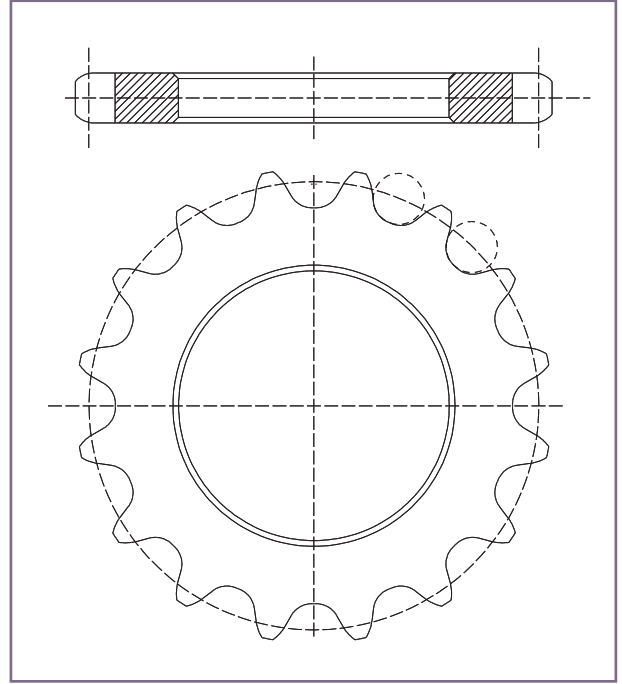
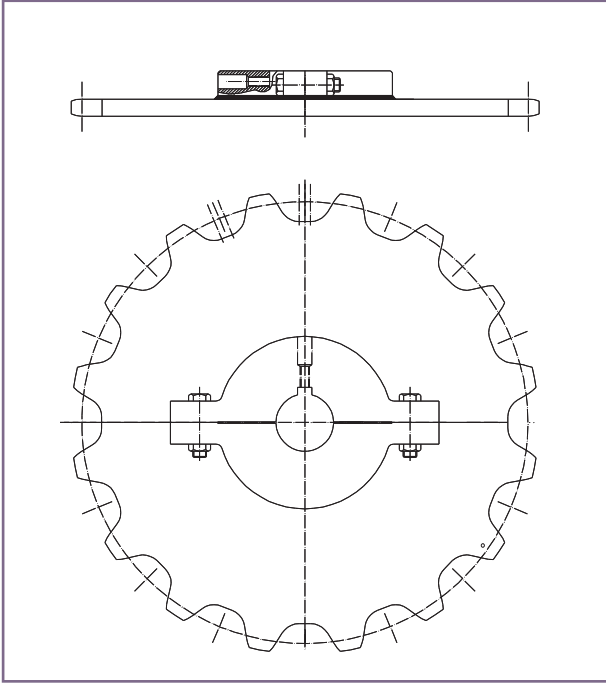


## SUGAR SPROCKETS



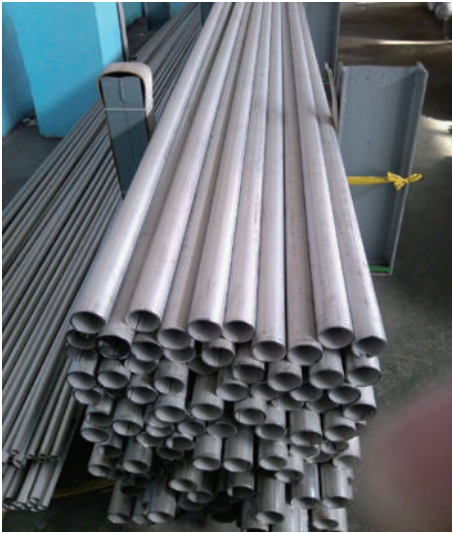


**SUGAR SPROCKETS**





**CARBON STEEL FOR BOILERS/JUICE HEATERS/EVAPORATORS/VAC-PANS**  
**STAINLESS STEEL TUBES FOR JUICE HEATERS/EVAPORATORS/VAC-PANS**



RANGE: 6.0MM OD to 168.3MM OD

GRADES: AISI-304, 304L, 316, 316L, 439.

STANDARDS: ASTM A-213, A-249, A-269, A-270, A-312, A-376, A-554, A-668 and A-358, A-778

ALSO DIN, IS, JS, and BRITISH STANDARDS

INFORMATION NEEDED TO QUOTE:

ITEMS		
OD (Tolerance)		
Wall (Tolerance)		
Length (Tolerance)		
Qty		
Material		
Standard		
Packing		
Test		
Certificate		
	YES	NO
HT (Annealing)		
Insider-Levelling		
Surface condition (Polishing)		
Surface condition (Pickling)		





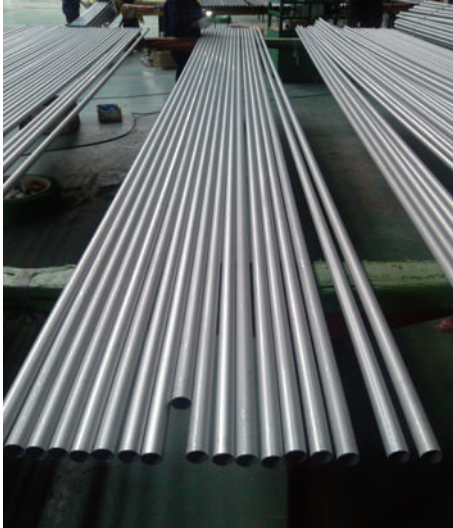
ISO9001:2015

JIANGSU JINQIU CHAIN TRANSMISSION CO., LTD



**CARBON STEEL FOR BOILERS/JUICE HEATERS/EVAPORATORS/VAC-PANS**

**STAINLESS STEEL TUBES FOR JUICE HEATERS/EVAPORATORS/VAC-PANS**



Tolerance for Stainless Steel Pipe												
ASTM A312 A778 JIS G3459												
Specification	Outside Diameter								Wall thickness		Straightness	Length
	O.D. (mm)	≤ 48.26	48.26 ~ 114.30	114.30 ~ 219.08	219.08 ~ 457.20	457.20 ~ 660.40	660.40 ~ 863.60	863.60 ~ 1219.20				
ASTM			~	~	~	~	~	~	+22.5%	6.4mm/6M	+50mm	
	Tolerance (mm)	+0.4 -0.8	+0.8 -0.8	+1.6 -0.8	+2.4 -0.8	+3.2 -0.8	+4.0 -0.8	+4.8 -0.8	-12.5%		-0mm	
JIS	O.D. (mm)	<30mm			≥30mm				W.T.	m<2m	≥2mm	≥defined length
	Tolerance (mm)	±0.30mm			±1%				Tolerance	±0.2mm	±10%	

Tolerance for Boiler and Heat-Exchanger Stainless Steel Tube						
ASTM A249 A269 JIS G3463						
Specification	Item	Outside Diameter(mm)	Wall Thickness			Length
			O.D.	W.T.	Tolerance	
ASTM		12.7~38.1 ±0.13	±10%			+50mm -0mm
		38.1~88.9 ±0.25				
		88.9~139.8 ±0.38				
JIS		≤60 ±0.25	O.D.	W.T.	Tolerance	≥defined length
		60~80 ±0.30				
		80~100 ±0.40				
		100~120 ±0.40				
	-0.60	<40mm	<2mm	+0.4mm -0mm		
	120~160 +0.40	<40mm	≥2mm	+20% -0mm		
	-0.80	≥40mm	-	+22% -0mm		

JIANGSU JINQIU CHAIN TRANSMISSION CO.,LTD  
<https://jqchain.en.alibaba.com>



ISO9001:2015

Add: No.88 North Huang Dong Rd. Huangli Town, Chang Zhou, JiangSu, China.  
Tel: (86) 519-83348588 Fax: (86) 519-83341062  
Website: [www.jqchain.com](http://www.jqchain.com) E-Mail: [Sales@jqchains.com](mailto:Sales@jqchains.com)