

JP LASER

Jiangpin Technology (wuhan) Co.,Ltd



Company Profile



("Jiangpin Technology") was founded in 2018, specializing in industrial laser. The company is specialized in the sales and production of industrial laser equipment. Main products: fiber laser welding machine, robot automatic laser welding machine, fiber laser marking machine, CO2 laser marking machine, UV laser marking machine. laser marking machine, CO2 laser marking machine, UV laser marking machine, laser cutting machine, laser cleaning machine and other products. The company draws on advanced technology at home and abroad, relying on years of market accumulation has established a stable laser equipment technology, sales, industrial automation control and research and development. Sales of laser equipment, industrial automation control and research and development of technical service team. Over the past few years, the company's sales network covers all over the country. Exported to Russia, the United States, the European Union, the Middle East, Southeast Asia, South Africa and other countries and regions.



Jiangpin Technology continues to adhere to the "integrity, dedication, efficiency, innovation" spirit of enterprise, adhering to the "practical contact with theory, Close contact with customers, adhere to the self-criticism." The enterprise style of steady forward, sustained development, in a variety of new technologies, rapid development of today, artisanal products. In the rapid development of various new technologies today, Jiangpin Technology, as a mature laser equipment manufacturing and sales enterprises, have the strength and ability to provide New and old customers to provide more professional, more leading laser equipment.

10⁺ Domestic and foreign patents

Company Honors



Since its establishment, Jiangpin Technology has obtained 10+ domestic and foreign patents, 5 computer software copyrights, and has a certain influence in the domestic and foreign excitation equipment industry. The company has a certain influence in the domestic and international excitation equipment industry.

Product Index

Laser welding machine	5
Laser marking machine	8
Laser cleaning machine	11
Laser cutting machine	12
Special equipment	18
Related accessories	19

Laser Welding Machine Series

Handheld laser welding machines and laser welding robots



Product Name: Robot welding machine (JPL-WFR)
 Product Size: arm span 1445mm
 Product Weight: 170kg
 Repeatability: ± 0.07
 Maximum Load: 8kg
 Installation method: ground
 Protection level: IP54
 Number of axes: 6



Product Name: Robot welding machine (JPL-WFR)
 Product Size: arm span 1440mm
 Product Weight: 172kg
 Maximum Load: 12kg
 Installation method: ground
 Protection level: IP54
 Number of axes: 6

Sample display



Sample display



Product Name: Hand held laser welding machine (JPL-WFH)
 Package Size: 126X71X185cm
 Package Weight: 230kg
 Supply Voltage: $220 \pm 10\%$ V AC 50/60Hz
 Placement environment: Smooth, vibration free and impact free
 Working environment temperature ($^{\circ}\text{C}$): 10-40
 Working environment humidity (%): <70
 Cooling method: water-cooling
 Applicable wavelength: 1064nm ($\pm 10\text{nm}$)



Product Name: Hand held laser welding machine (JPL-WFH)
 Package Size: 131X71X131cm
 Package Weight: 210kg
 Supply Voltage: $220 \pm 10\%$ V AC 50/60Hz
 Placement environment: Smooth, vibration free and impact free
 Working environment temperature ($^{\circ}\text{C}$): 10-40
 Working environment humidity (%): <70
 Cooling method: water-cooling
 Applicable wavelength: 1064nm ($\pm 10\text{nm}$)

Sample display



Sample display



Product Name: Hand held laser welding machine (JPL-WFH)
 Package Size: 131X71X131cm
 Package Weight: 200kg
 Supply Voltage: $220 \pm 10\%$ V AC 50/60Hz
 Placement environment: Smooth, vibration free and impact free
 Working environment temperature ($^{\circ}\text{C}$): 10-40
 Working environment humidity (%): <70
 Cooling method: water-cooling
 Applicable wavelength: 1064nm ($\pm 10\text{nm}$)



Product Name: Hand held laser welding machine (JPL-WFH)
 Package Size: 141X61X105cm
 Package Weight: 170kg
 Supply Voltage: $220 \pm 10\%$ V AC 50/60Hz
 Placement environment: Smooth, vibration free and impact free
 Working environment temperature ($^{\circ}\text{C}$): 10-40
 Working environment humidity (%): <70
 Cooling method: water-cooling
 Applicable wavelength: 1064nm ($\pm 10\text{nm}$)

Sample display



Sample display





Product Name: Hand held laser welding machine (JPL-WFH)
 Package Size: 77X66X46cm
 Package Weight: 80.5kg
 Supply Voltage: 220±10% V AC 50/60Hz
 Placement environment: Smooth, vibration free and impact free
 Working environment temperature (°C): 10-40
 Working environment humidity (%): <70
 Cooling method: forced air cooling
 Applicable wavelength: 1064nm (± 10nm)

Sample display



Product Name: Hand held laser welding machine (JPL-WFH)
 Package Size: 141X72X127cm
 Package Weight: 230kg
 Supply Voltage: 220±10% V AC 50/60Hz
 Placement environment: Smooth, vibration free and impact free
 Working environment temperature (°C): 10-40
 Working environment humidity (%): <70
 Cooling method: water-cooling
 Applicable wavelength: 1064nm (± 10nm)

Sample display



Product Name: Hand held laser welding machine (JPL-WFH)
 Package Size: 141X61X105cm
 Package Weight: 160kg
 Supply Voltage: 220±10% V AC 50/60Hz
 Placement environment: Smooth, vibration free and impact free
 Working environment temperature (°C): 10-40
 Working environment humidity (%): <70
 Cooling method: water-cooling
 Applicable wavelength: 1064nm (± 10nm)

Sample display



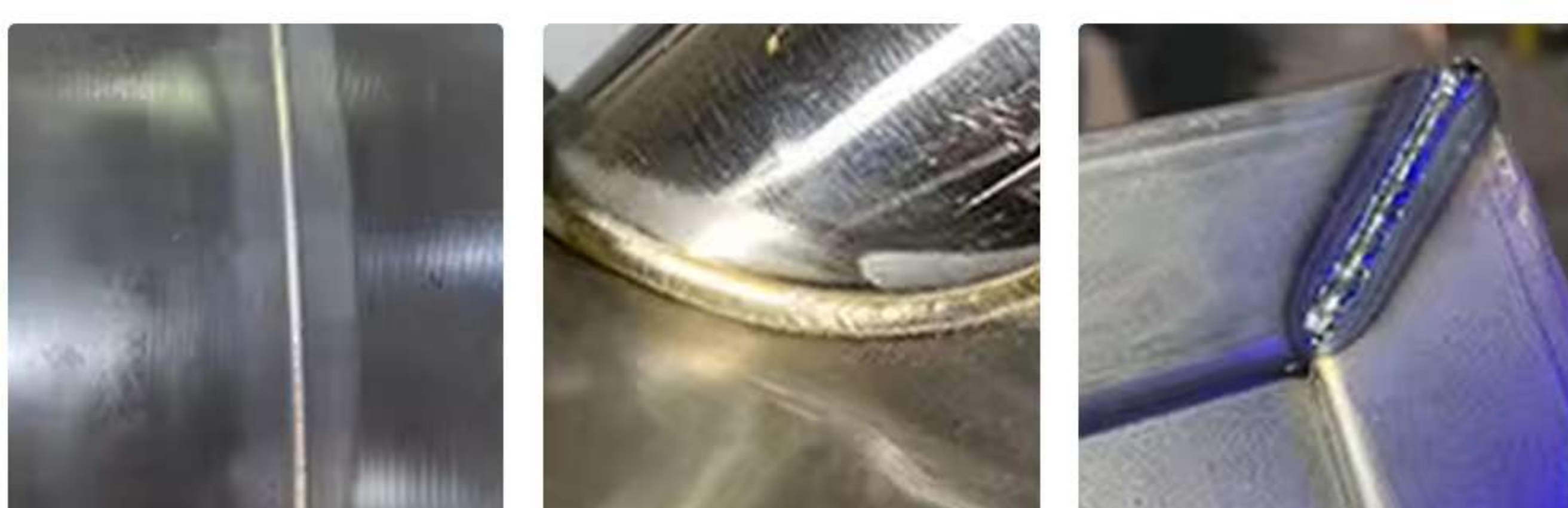
Product Name: Mold Laser Welding Machine (JP-WJ-W200)
 Package Size: 135X120X60cm
 Package Weight: 300kg
 Supply Voltage: 220±10% V AC 50/60Hz
 Placement environment: Smooth, vibration free and impact free
 Working environment temperature (°C): 10-40
 Working environment humidity (%): <70
 Cooling method: water-cooling
 Applicable wavelength: 1064nm (± 10nm)

Sample display



Product Name: Jewelry Laser Welding Machine (JP-WJ-W200)
 Package Size: 54X33X47cm
 Package Weight: 26kg
 Supply Voltage: 220±10% V AC 50/60Hz
 Placement environment: Smooth, vibration free and impact free
 Working environment temperature (°C): 10-40
 Working environment humidity (%): <70
 Cooling method: water-cooling
 Applicable wavelength: 1064nm (± 10nm)

Sample display



Product Name: Jewelry Laser Welding Machine (JP-WJ-W200)
 Package Size: 114X67X138cm
 Package Weight: 240kg
 Supply Voltage: 220±10% V AC 50/60Hz
 Placement environment: Smooth, vibration free and impact free
 Working environment temperature (°C): 10-40
 Working environment humidity (%): <70
 Cooling method: water-cooling
 Applicable wavelength: 1064nm (± 10nm)

Sample display





Product Name: Four-axis Tabletop Laser
Welding Machine
Package Size: 88X100X150cm
Package Weight: 300kg
Supply Voltage: 220±10% V AC 50/60Hz
Placement environment: Smooth, vibration
free and impact free
Working environment temperature (°C): 10-40
Working environment humidity (%): <70
Cooling method: water-cooling
Applicable wavelength: 1064nm (± 10nm)

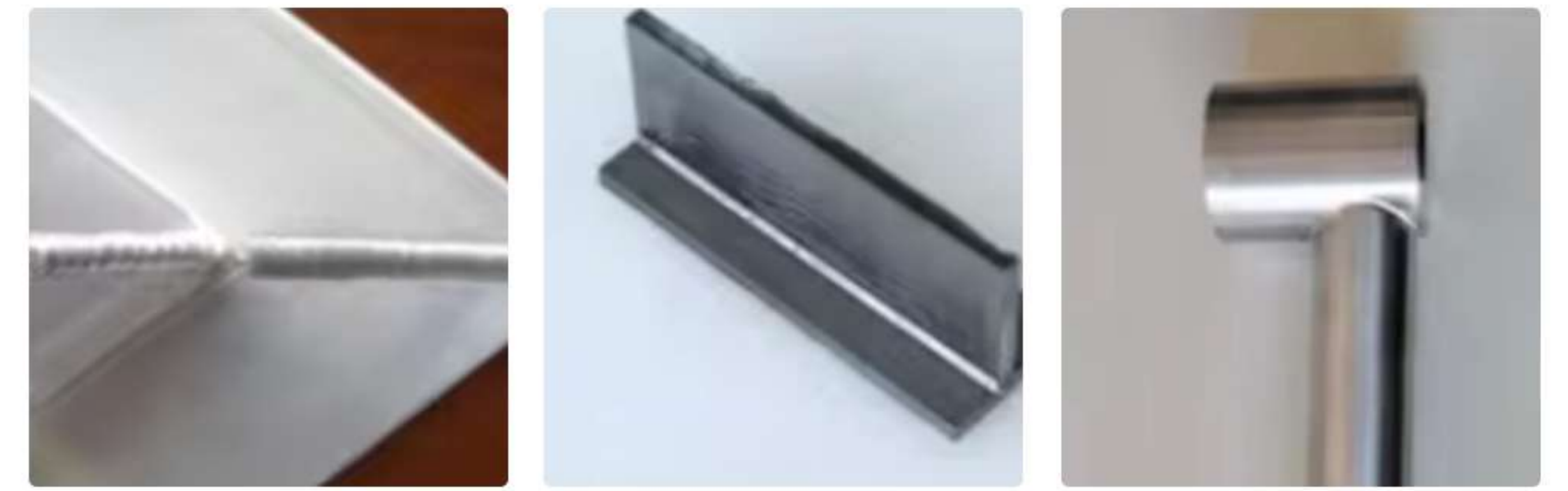


Product Name: Hand held laser welding
machine (JPL-WFH)
Package Size: 56X35X52cm
Package Weight: 80kg
Supply Voltage: 220±10% V AC 50/60Hz
Placement environment: Smooth, vibration
free and impact free
Working environment temperature (°C): 10-40
Working environment humidity (%): <70
Cooling method: forced air cooling
Applicable wavelength: 1064nm (± 10nm)

Sample display



Sample display



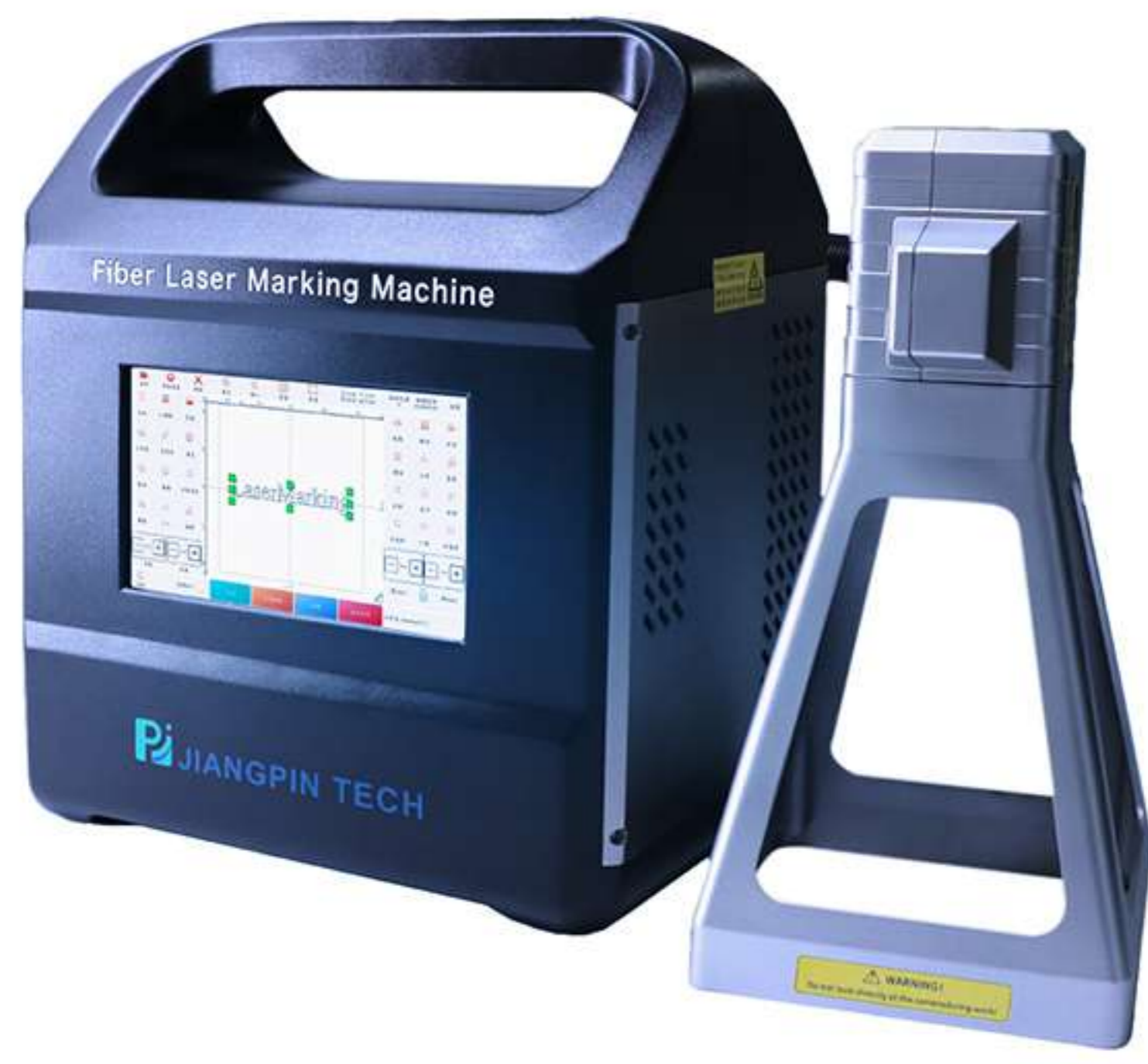
Product Name: Hand held laser welding
machine (JPL-WFH)
Package Size: 73X62X42cm
Package Weight: 81kg
Supply Voltage: 220±10% V AC 50/60Hz
Placement environment: Smooth, vibration
free and impact free
Working environment temperature (°C): 10-40
Working environment humidity (%): <70
Cooling method: forced air cooling
Applicable wavelength: 1064nm (± 10nm)

Sample display



Laser Marking Machine Series

Laser marking machines with different light sources



Product Name: Fiber laser marking machine (JPL-MF)
 Package Size: 28X20X33cm
 Package Weight: 10kg
 Power supply: 220V
 Locate mode: Red light positioning
 Working environment temperature (°C): 10-40
 Working environment humidity (%): <70
 Cooling method: forced air cooling
 Applicable wavelength: 1064nm (± 10nm)

Sample display



Product Name: Fiber laser marking machine (JPL-MF)
 Package Size: 83X55X46cm
 Package Weight: 52kg
 Power supply: 220V
 Locate mode: Red light positioning
 Working environment temperature (°C): 10-40
 Working environment humidity (%): <70
 Cooling method: forced air cooling
 Applicable wavelength: 1064nm (± 10nm)

Sample display



Product Name: Fiber laser marking machine (JPL-MF)
 Package Size: 90X115X165cm
 Package Weight: 350kg
 Power supply: 220V
 Locate mode: Red light positioning
 Working environment temperature (°C): 10-40
 Working environment humidity (%): <70
 Cooling method: forced air cooling
 Applicable wavelength: 1064nm (± 10nm)

Sample display



Product Name: Fiber laser marking machine (JPL-MF)
 Package Size: 70X20X60cm
 Package Weight: 56kg
 Power supply: 220V
 Locate mode: Red light positioning
 Working environment temperature (°C): 10-40
 Working environment humidity (%): <70
 Cooling method: forced air cooling
 Applicable wavelength: 1064nm (± 10nm)

Sample display



Product Name: Fiber laser marking machine (JPL-MF)
 Package Size: 90X70X117cm
 Package Weight: 114kg
 Power supply: 220V
 Locate mode: Red light positioning
 Working environment temperature (°C): 10-40
 Working environment humidity (%): <70
 Cooling method: forced air cooling
 Applicable wavelength: 1064nm (± 10nm)

Sample display



Product Name: Fiber laser marking machine (JPL-MF)
 Package Size: 26X36X46cm
 Package Weight: 30kg
 Power supply: 220V
 Locate mode: Red light positioning
 Working environment temperature (°C): 10-40
 Working environment humidity (%): <70
 Cooling method: forced air cooling
 Applicable wavelength: 1064nm (± 10nm)

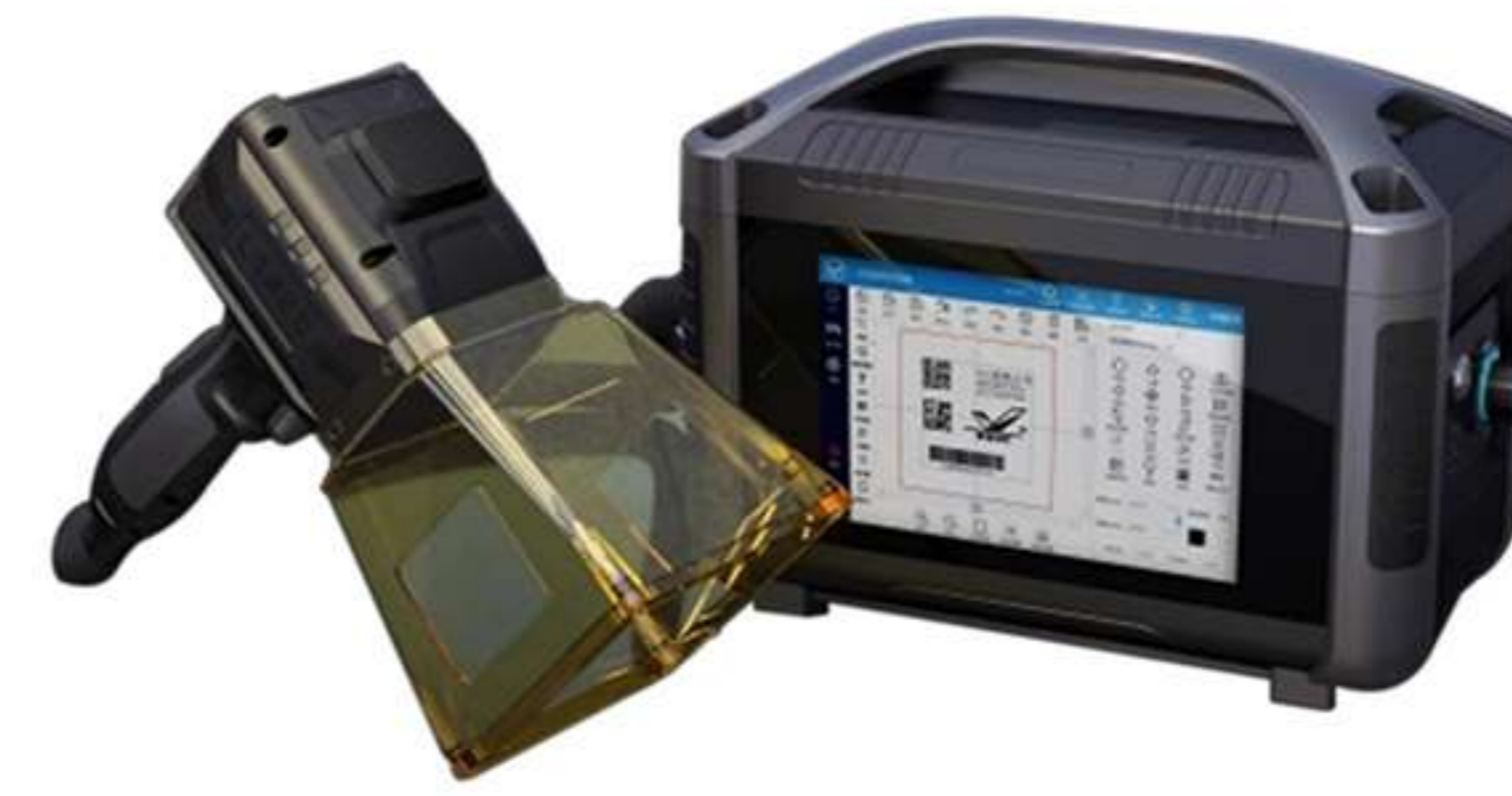
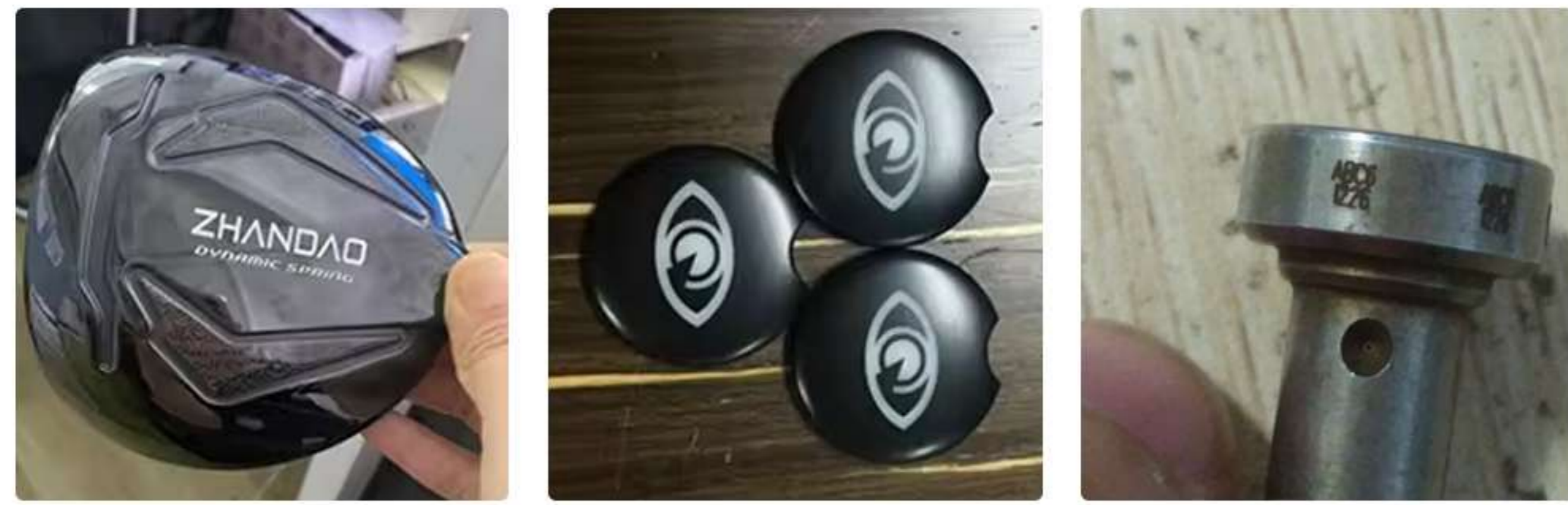
Sample display





Product Name: Fiber laser marking machine (JPL-MF-F)
 Package Size: 136X54X52cm
 Package Weight: 86kg
 Power supply: 220V
 Locate mode: Red light positioning
 Working environment temperature (°C): 10-40
 Working environment humidity (%): <70
 Cooling method: forced air cooling
 Applicable wavelength: 1064nm (± 10nm)

Sample display



Product Name: Fiber laser marking machine (JPL-MF)
 Package Size: 28X20X33cm
 Package Weight: 10kg
 Power supply: 220V
 Locate mode: Red light positioning
 Working environment temperature (°C): 10-40
 Working environment humidity (%): <70
 Cooling method: forced air cooling
 Applicable wavelength: 1064nm (± 10nm)

Sample display



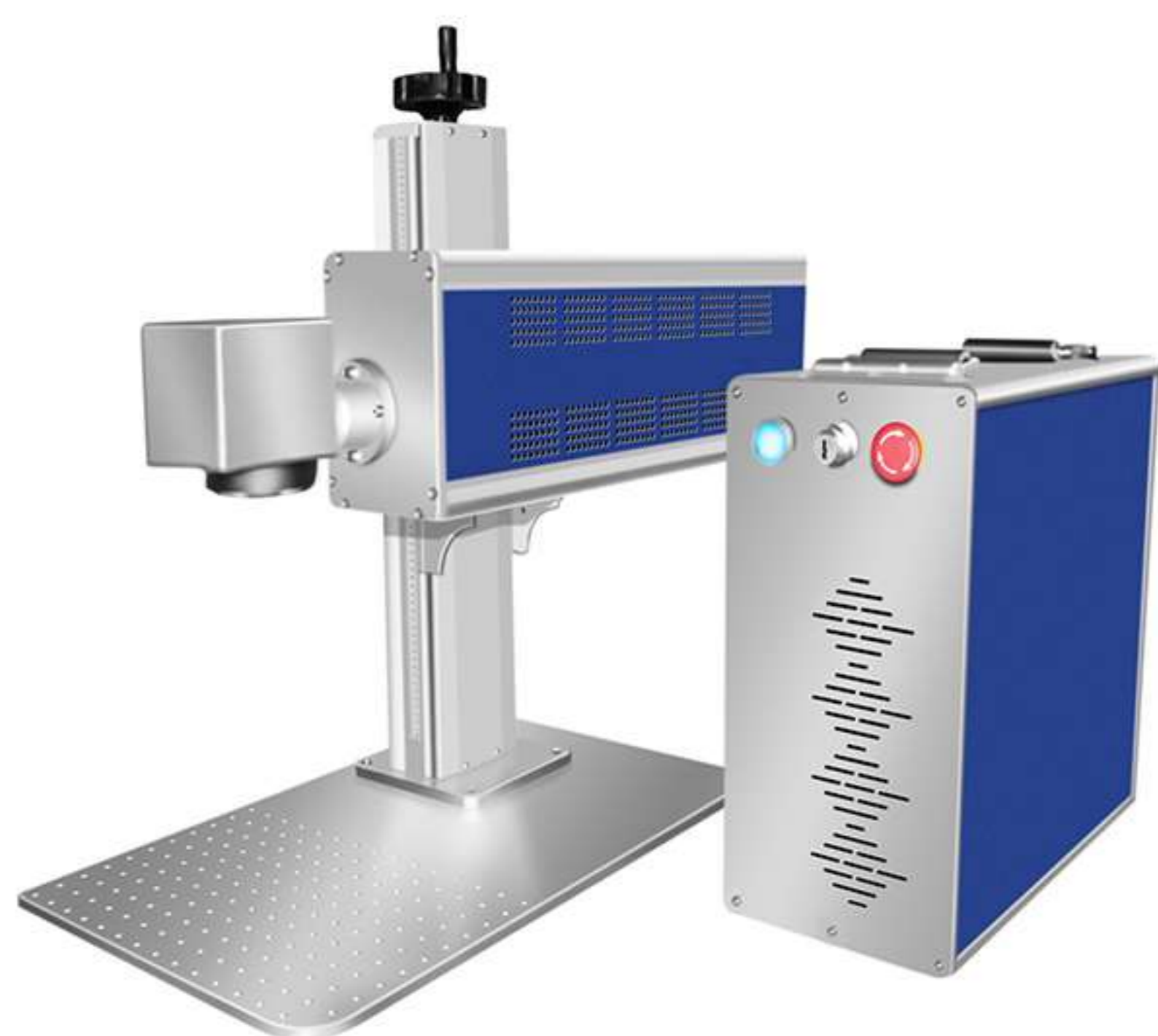
Product Name: Laser interior engraving machine (JP-EG-A)
 Package Size: 85X115X125cm
 Package Weight: 200kg
 Power supply: 220V
 Locate mode: Red light positioning
 Working environment temperature (°C): 10-40
 Working environment humidity (%): <70
 Cooling method: forced air cooling
 Applicable wavelength: 1064nm (± 10nm)

Sample display



Product Name: CO₂ laser marking machine (JPL-MC)
 Package Size: 90X70X117cm
 Package Weight: 95kg
 Power supply: 220V
 Locate mode: Red light positioning
 Working environment temperature (°C): 10-40
 Working environment humidity (%): <70
 Cooling method: forced air cooling
 Applicable wavelength: 1064nm (± 10nm)

Sample display



Product Name: CO₂ laser marking machine (JPL-MC)
 Package Size: 90X70X60cm
 Package Weight: 75kg
 Power supply: 220V
 Locate mode: Red light positioning
 Working environment temperature (°C): 10-40
 Working environment humidity (%): <70
 Cooling method: forced air cooling
 Applicable wavelength: 1064nm (± 10nm)

Sample display



Product Name: CO₂ laser marking machine (JPL-MC)
 Package Size: 210X56X135cm
 Package Weight: 130kg
 Power supply: 220V
 Locate mode: Red light positioning
 Working environment temperature (°C): 10-40
 Working environment humidity (%): <70
 Cooling method: water-cooling
 Applicable wavelength: 1064nm (± 10nm)

Sample display





Product Name: UV laser marking machine (JPL-MU)
 Package Size: 47X61X160cm
 Package Weight: 100kg
 Power supply: 220V
 Locate mode: Red light positioning
 Working environment temperature (°C): 10-40
 Working environment humidity (%): <70
 Cooling method: water-cooling
 Applicable wavelength: 355nm (± 10nm)



Product Name: UV laser marking machine (JPL-MU)
 Package Size: 65X36X56cm
 Package Weight: 88kg
 Power supply: 220V
 Locate mode: Red light positioning
 Working environment temperature (°C): 10-40
 Working environment humidity (%): <70
 Cooling method: forced air cooling
 Applicable wavelength: 355nm (± 10nm)

Sample display



Sample display



Product Name: UV laser marking machine (JPL-MU)
 Package Size: 88X127X118cm
 Package Weight: 200kg
 Power supply: 220V
 Locate mode: Red light positioning
 Working environment temperature (°C): 10-40
 Working environment humidity (%): <70
 Cooling method: water-cooling
 Applicable wavelength: 355nm (± 10nm)



Product Name: UV laser marking machine (JPL-MU)
 Package Size: 110X85X135cm
 Package Weight: 180kg
 Power supply: 220V
 Locate mode: Red light positioning
 Working environment temperature (°C): 10-40
 Working environment humidity (%): <70
 Cooling method: water-cooling
 Applicable wavelength: 355nm (± 10nm)

Sample display



Sample display



Product Name: UV laser marking machine (JPL-MU)
 Package Size: 50X33X58cm
 Package Weight: 22kg
 Power supply: 220V
 Locate mode: Red light positioning
 Working environment temperature (°C): 10-40
 Working environment humidity (%): <70
 Cooling method: forced air cooling
 Applicable wavelength: 355nm (± 10nm)

Sample display



Laser Cleaning Machine Series

Laser cleaners with different operating modes



Product Name: Laser cleaning machine
(JPL-EFH-300S)
Package Size: 80X41X84cm
Package Weight: 65kg
Power supply: 220V
Pulse width: 10-500ns
Working environment temperature (°C): 10-40
Working environment humidity (%): <70
Cooling method: forced air cooling
SCAN: Supports 8 scanning modes



Product Name: Laser cleaning machine
(JPL-EFH-500M)
Package Size: 100X62X105cm
Package Weight: 90kg
Power supply: 220V
Pulse width: 10-500ns
Working environment temperature (°C): 10-40
Working environment humidity (%): <70
Cooling method: forced air cooling
SCAN: Supports 8 scanning modes

Sample display



Sample display



Product Name: Laser cleaning machine
(JPL-EFH-200SL)
Package Size: 71X55X38cm
Package Weight: 45kg
Power supply: 220V
Pulse width: 10-500ns
Working environment temperature (°C): 10-40
Working environment humidity (%): <70
Cooling method: forced air cooling
SCAN: Supports 8 scanning modes



Product Name: Laser cleaning machine
(JPL-EFH-300SL)
Package Size: 72X56X40cm
Package Weight: 47kg
Power supply: 220V
Pulse width: 10-500ns
Working environment temperature (°C): 10-40
Working environment humidity (%): <70
Cooling method: forced air cooling
SCAN: Supports 8 scanning modes

Sample display



Sample display



Product Name: Laser cleaning machine
(JPL-EFH-50SC)
Package Size: 27X22X12cm
Package Weight: 18kg
Power supply: 220V
Pulse width: 10-500ns
Working environment temperature (°C): 10-40
Working environment humidity (%): <70
Cooling method: forced air cooling
SCAN: Supports 8 scanning modes

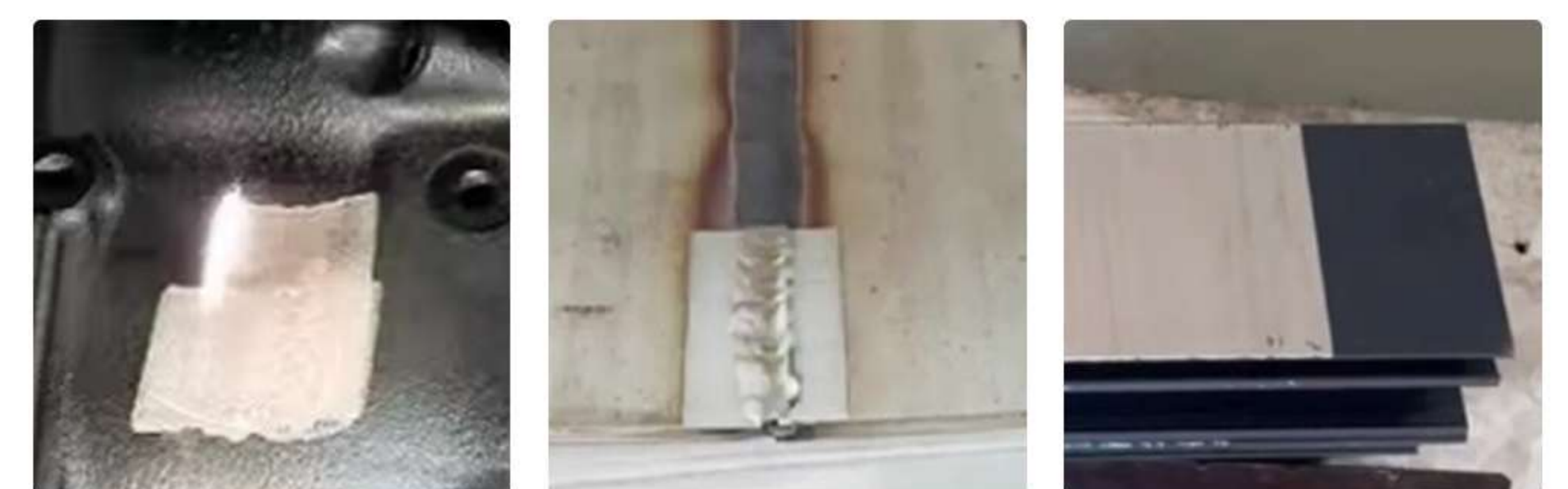


Product Name: Laser cleaning machine
(JPL-EFH-100SC)
Package Size: 30X21X13cm
Package Weight: 22kg
Power supply: 220V
Pulse width: 10-500ns
Working environment temperature (°C): 10-40
Working environment humidity (%): <70
Cooling method: forced air cooling
SCAN: Supports 8 scanning modes

Sample display



Sample display





Product Name: Laser cleaning machine
(JPL-EFH-200SC)
Package Size: 45X28X14cm
Package Weight: 26kg
Power supply: 220V
Pulse width: 10-500ns
Working environment temperature (°C): 10-40
Working environment humidity (%): <70
Cooling method: forced air cooling
SCAN: Supports 8 scanning modes



Product Name: laser cleaning machine
(JPL-EFH)
Package Size: 122X71X142cm
Package Weight: 200kg
Power supply: 220V
Pulse width: 10-500ns
Working environment temperature (°C): 10-40
Working environment humidity (%): <70
Cooling method: forced air cooling
SCAN: Supports 8 scanning modes

Sample display



Sample display



Laser Cutting Machine Series

Different types of laser cutting machines

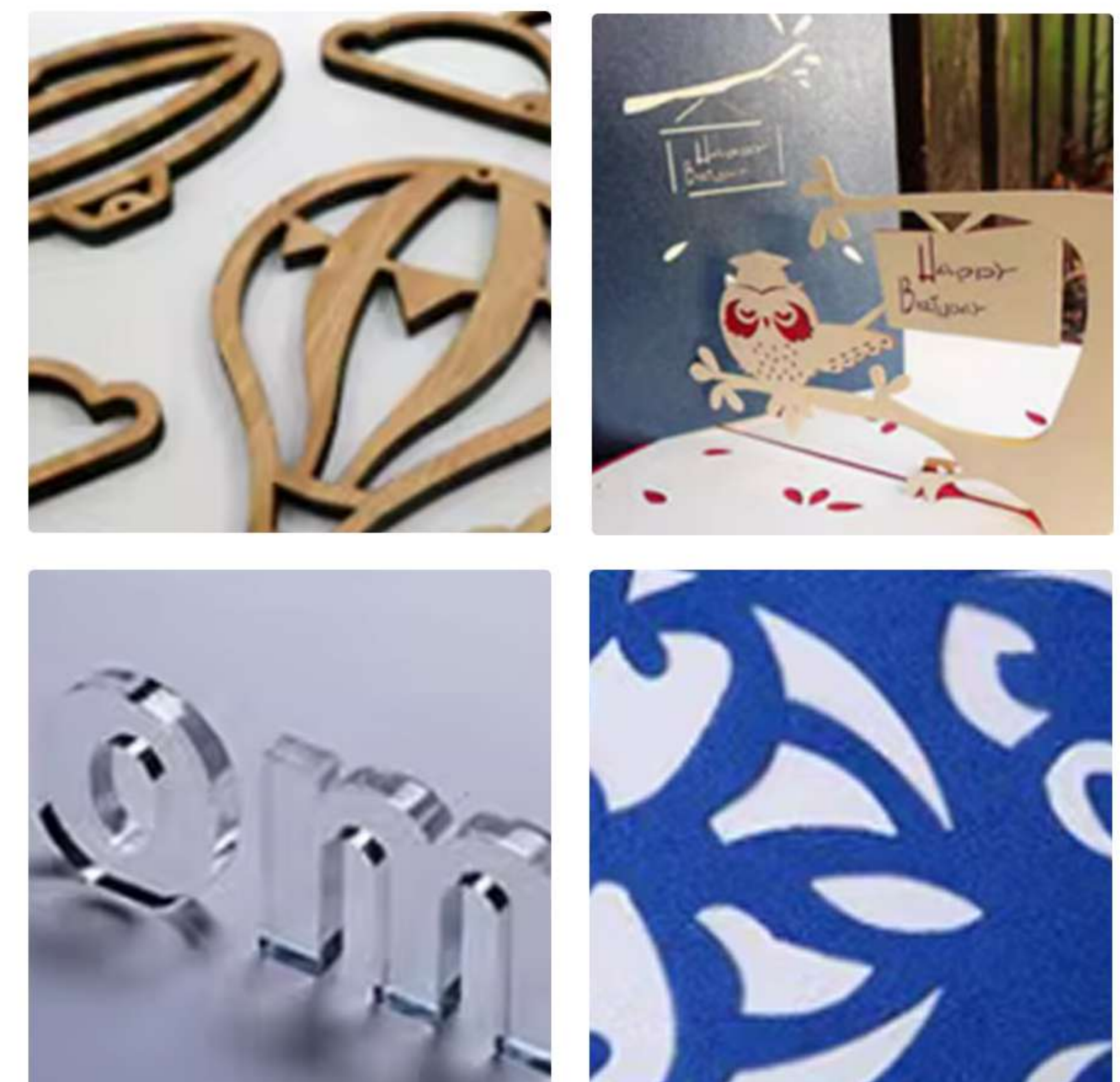
Our laser cutting machines use high-precision laser technology to achieve precise cutting of both complex curves and minute details, ensuring that each workpiece has accurate dimensions and smooth contours, giving your metal and non-metal products superior quality and craftsmanship aesthetics.





Product Name: Non-metal Laser Cutting Machine (JP-CM4060)
Package Size: 152X100X120cm
Package Weight: 260kg
Power supply: 220V
Laser type: CO₂
Working environment temperature (°C): 10-40
Working environment humidity (%): <70
Cooling method: forced air cooling
Locate mode: Red light positioning

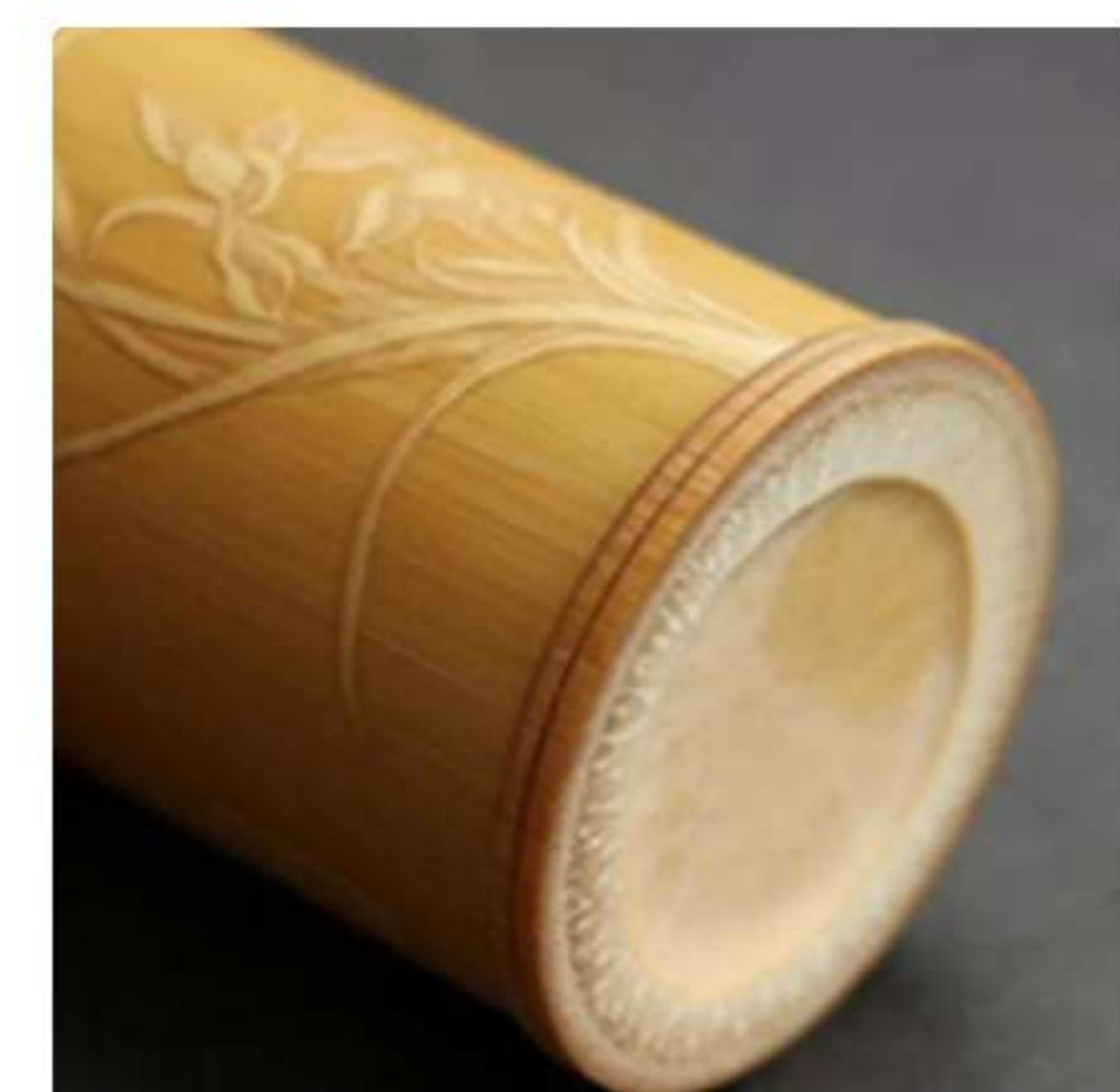
Sample display

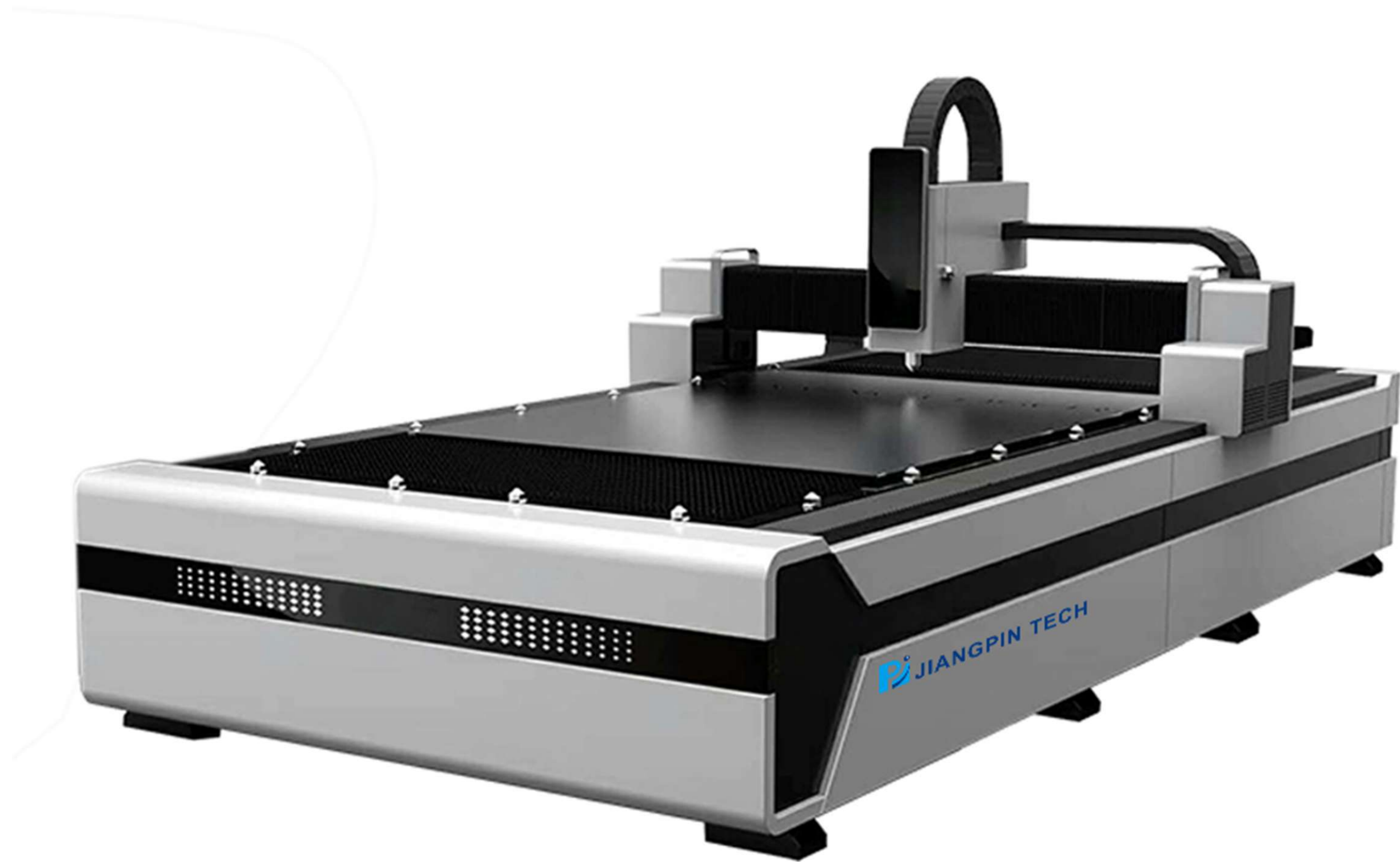




Product Name: Non-metal Laser Cutting Machine (JP-CM3020)
 Package Size: 138X98X98cm
 Package Weight: 240kg
 Power supply: 220V
 Laser type: CO2
 Working environment temperature (°C): 10-40
 Working environment humidity (%): <70
 Cooling method: forced air cooling
 Locate mode: Red light positioning

Sample display





Product Name: Laser Plate Cutting Machine
(JP-MC3015)

Package Size: 455X230X200cm

Package Weight: 4000kg

Power supply: 380V

Laser type: Fiber optic

Working environment temperature (°C): 10-40

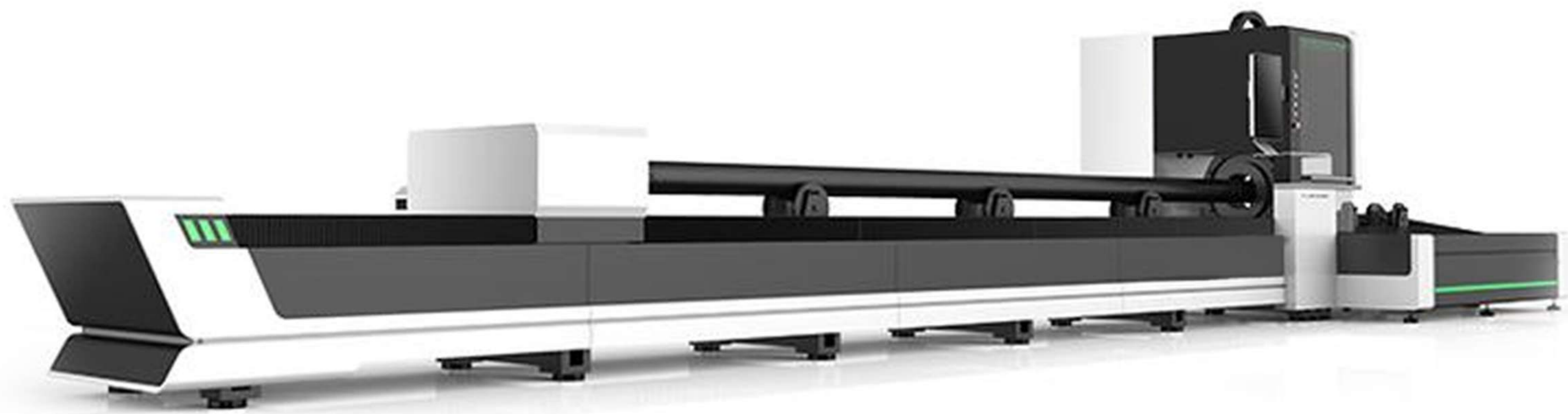
Working environment humidity (%): <70

Cooling method: water-cooling

Mobile mode: servo drive

> Sample display





Product Name: Laser Tube Cutting Machine
(JP-MC3015)

Package Size: 938X134X200cm

Package Weight: 2800kg

Power supply: 380V

Laser type: Fiber optic

Working environment temperature (°C): 10-40

Working environment humidity (%): <70

Cooling method: water-cooling

Mobile mode: servo drive

> Sample display





Product Name: Laser Plate Cutting Machine
(JP-MC3015-3000)

Package Size: 655X243X212cm

Package Weight: 5600kg

Power supply: 380V

Laser type: Fiber optic

Working environment temperature (°C): 10-40

Working environment humidity (%): <70

Cooling method: water-cooling

Mobile mode: servo drive

> Sample display



Special laser equipment series

Special equipment used in conjunction with laser equipment



Product Name: Nitrogen generator
 Package Size: 110X62X140cm
 Package Weight: 190kg
 Power supply: 220V
 Gas production: 15S/min
 Working environment temperature (°C): 10-40
 Working environment humidity (%): <70
 Cooling method: forced air cooling
 Intake pressure: 0.6-0.9MPA



Product Name: Wall painting machine
 Package Size: 78X70X260cm
 Package Weight: 90kg
 Power supply: 220V
 Color painting technology: High precision piezoelectric inkjet technology.
 Working environment temperature (°C): 10-40
 Working environment humidity (%): <70
 Cooling method: forced air cooling

Applications



Sample display



Product Name: Voltage regulator
 Package Size: 52X48X73cm
 Package Weight: 160kg
 Power supply: 220V
 Waveform distortion: No additional waveform distortion.
 Working environment temperature (°C): 10-40
 Working environment humidity (%): <70
 Cooling method: forced air cooling
 Load power factor: 0.8



Product Name: Crystal label printer
 Package Size: 120X70X120cm
 Package Weight: 92kg
 Power supply: 220V
 Picture format: BMP,TIF,EPS,JPG,PDF
 Working environment temperature (°C): 10-40
 Working environment humidity (%): <70
 Printing materials: Release paper

Applications



Sample display



Laser equipment accessories series

Covering all laser equipment accessories of our company



Product Name: Laser cutting head-BM111
Package Size: 60X23X20cm
Package Weight: 15kg



Product Name: 3D flexible workbench
Package Size: 200X100X60cm
Package Weight: 520kg



Product Name: Planar worktable
Package Size: 38X30X16cm
Package Weight: 12kg



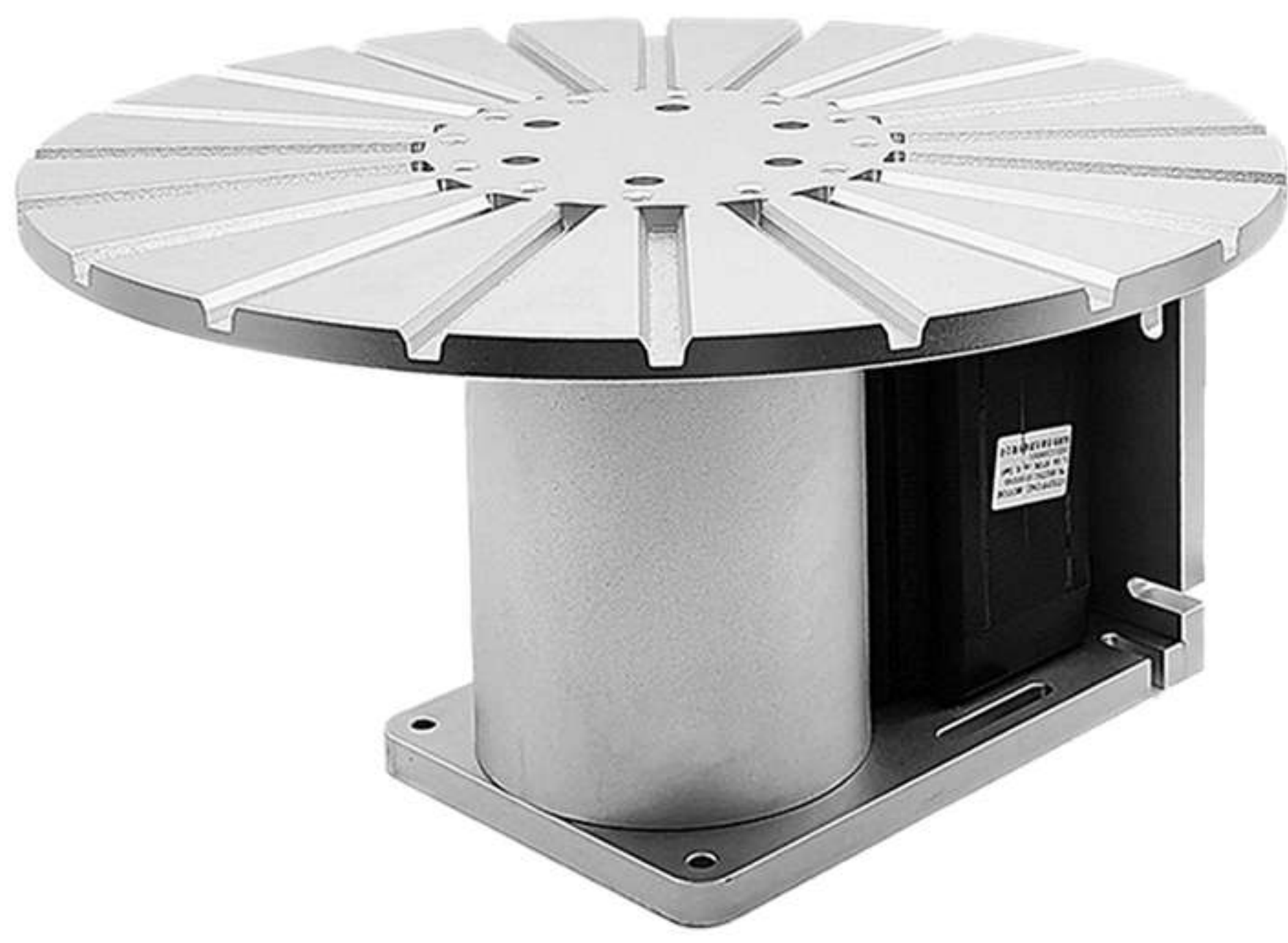
Product Name: Field lens
Package Size: 10X10X6cm
Package Weight: 4kg



Product Name: Marking machine fixture
Package Size: 31X24X24cm
Package Weight: 8kg



Product Name: Rubber wrapping
rotating workbench
Package Size: 45X18X16cm
Package Weight: 8kg



Product Name: Pen making tooling
Package Size: 42X42X28cm
Package Weight: 8kg



Product Name: Smoke and dust purifier
Package Size: 40X40X63cm
Package Weight: 16kg



Product Name: Welding wire
Package Size: 28X28X16cm
Package Weight: 5kg



Product Name: Welding gun
Package Size: 18X20X3cm
Package Weight: 3kg



Product Name: Electric pillar
Package Size: 20X35X60cm
Package Weight: 15kg



Product Name: Protective lenses
Package Size: 3X3X2cm
Package Weight: 0.2kg



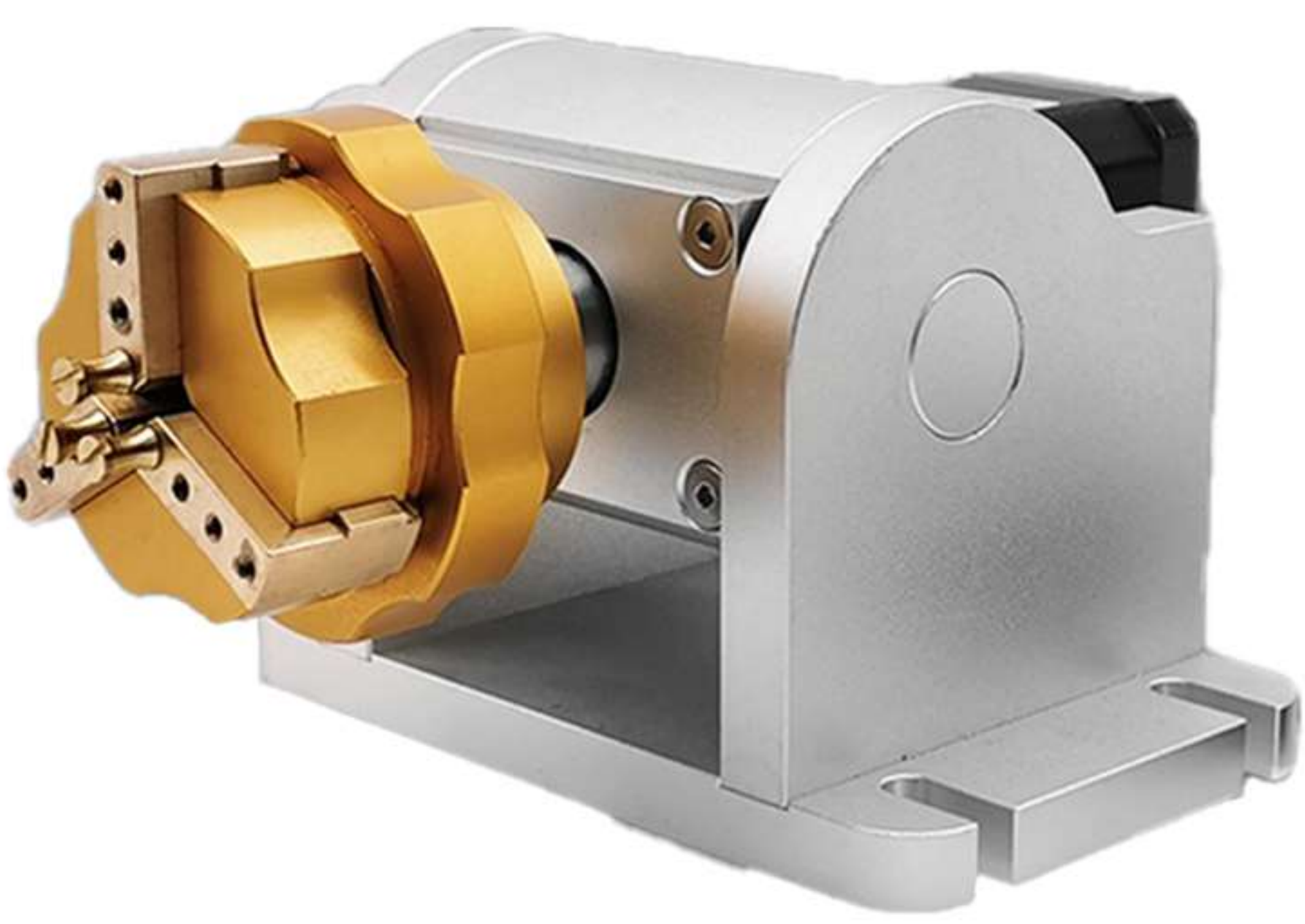
Product Name: Brass mouthpiece
Package Size: 12X5X3cm
Package Weight: 1kg



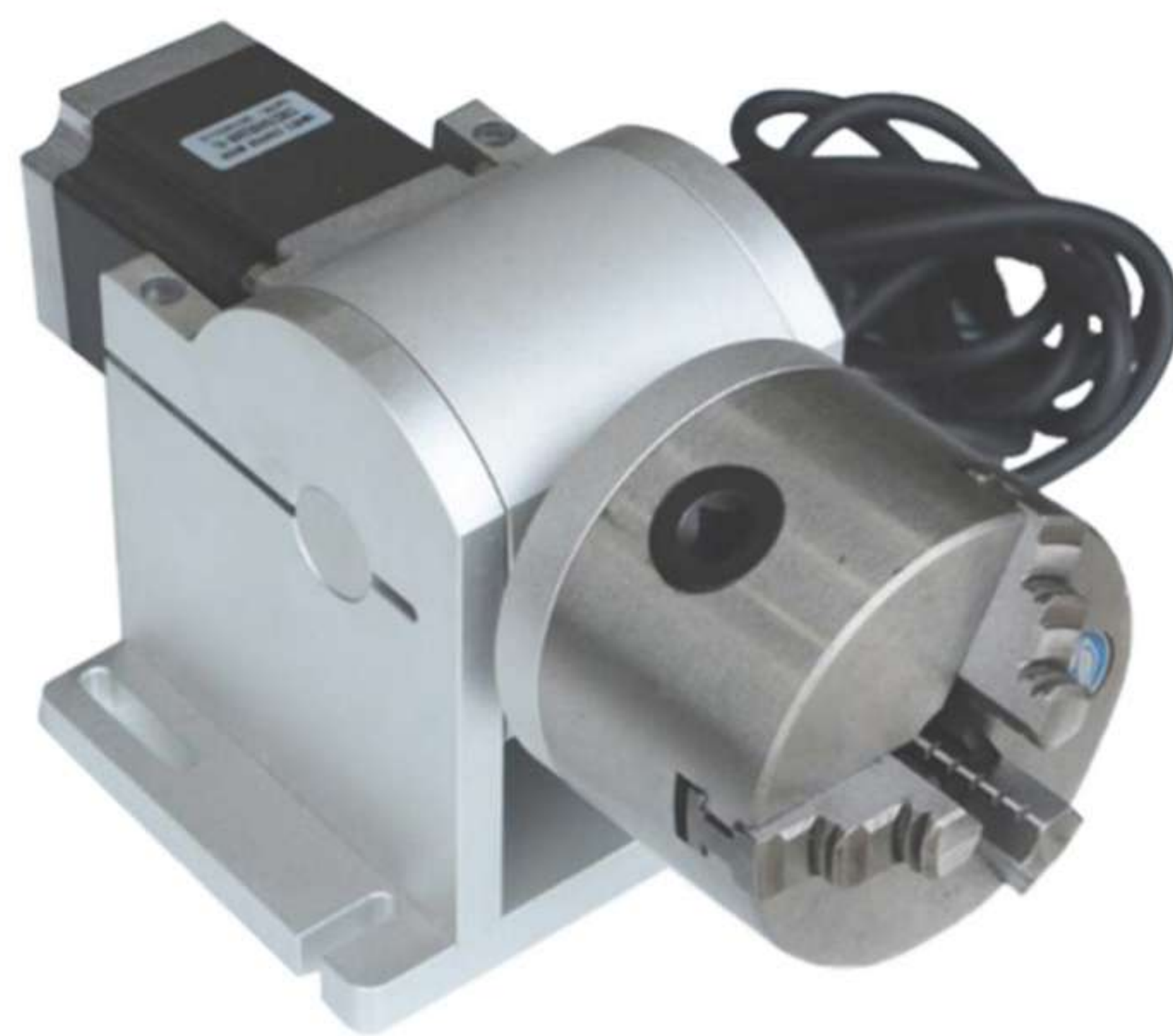
Product Name: Brass coin
Package Size: 3X3X1cm
Package Weight: 0.4kg



Product Name: Rotating fixture
with tailstock
Package Size: 63X15X21cm
Package Weight: 8kg



Product Name: Special for rotating
workwear rings
Package Size: 15X19X12cm
Package Weight: 6kg



Product Name: Rotating fixture
Package Size: 15X21X15cm
Package Weight: 7kg



Product Name: Rotating fixture-160
Package Size: 30X19X25cm
Package Weight: 8kg



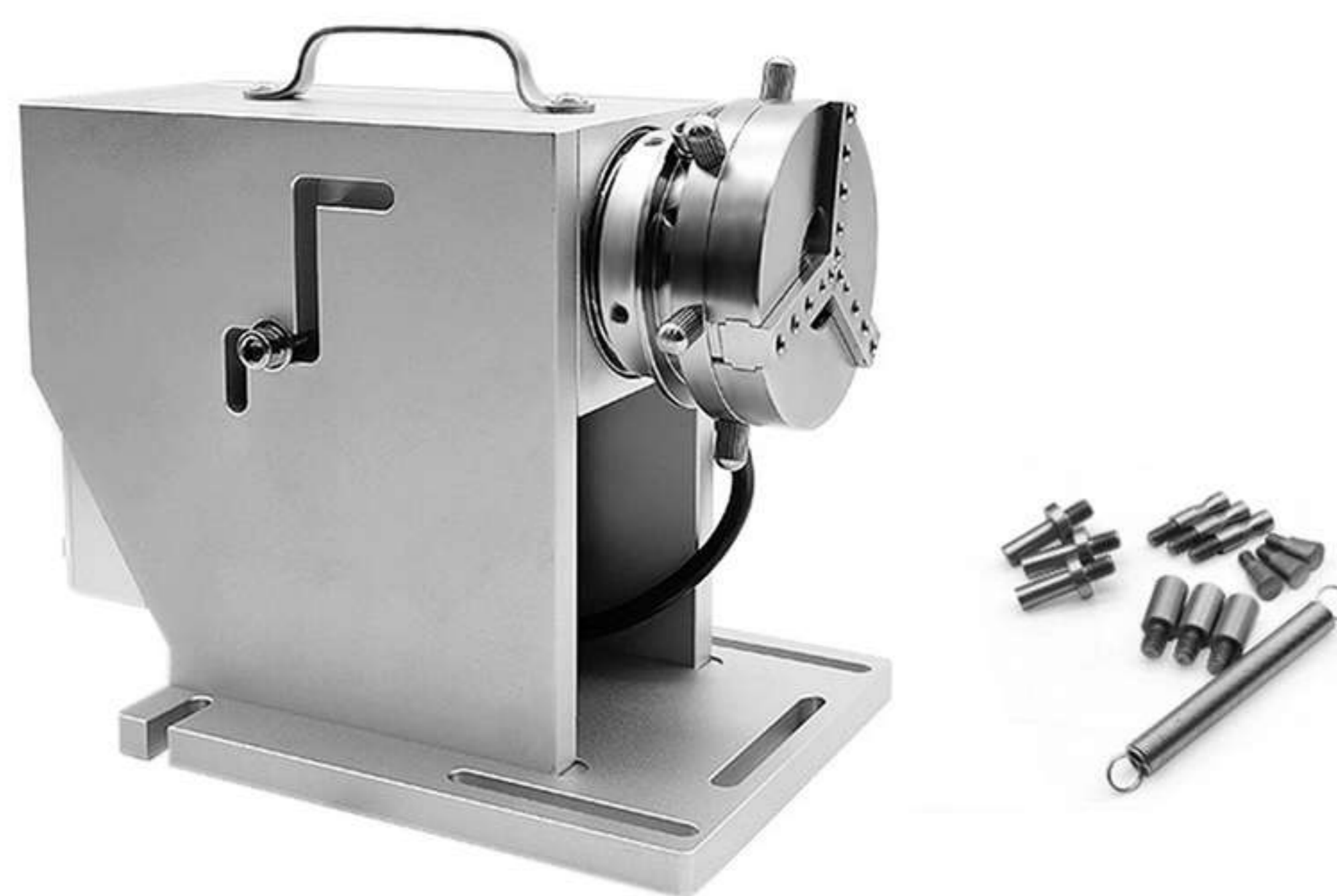
Product Name: Galvanometer RC1001
Package Size: 15X13X12cm
Package Weight: 7kg



Product Name: Galvanometer RC7110
Package Size: 15X13X12cm
Package Weight: 7kg



Product Name: Control card
Package Size: 15X10X6cm
Package Weight: 2kg



Product Name: Planar worktable
Package Size: 38X30X16cm
Package Weight: 12kg

Jiangpin technology with its deep professional heritage and continuous innovation of research and development strength, to create all kinds of high-end, precision laser equipment, for the global manufacturing industry to provide a powerful and accurate power source. We are not only a laser equipment manufacturer, but also an important driving force on the road of your Industry 4.0!



CEO: Mr. Pang

Tel: +86 18971319560

WeChat: +86 18971319560

WhatsApp: +86 18971319560

Email: postmaster@jpkjwh.cn