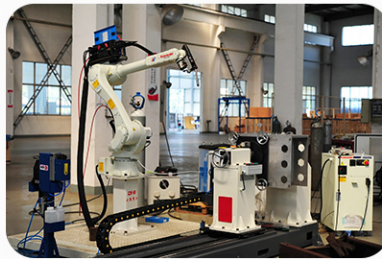




京澎机械设备(上海)有限公司

Jingpeng Machinery & Equipment (Shanghai) Co.,Ltd



Ball Spline

About Us

Jingpeng Machinery Equipment (Shanghai) Co., Ltd. was established in 2015. Our main products are ball screws, linear guides, cross guides, precision ball screws/splines, single shaft actuators, medium and large bearings, rack, couplings, support units, servo motors and drives, etc. We cooperate with the German YOSO company. With independent import and export management rights, Jingpeng has completed trademark registration and continues to promote and use it. Today, YOSO is one of the world's well-known brands. The company's products sell well all over the world, and are exported to the United States, Spain, Turkey, Italy, Austria, Brazil and other countries. Jingpeng Machinery has learned German production technology, combined with European and Japanese design concepts, specially established an independent research and development center, and introduced advanced manufacturing equipment and high-precision testing equipment at home and abroad to complete an annual output value of 1.5 million sets of screw guides. The application areas of the products are as follows: - Automation industry - Robot industry - Semiconductor industry - Industrial machinery - Medical equipment - Green energy industry - Machine tools - Automatic storage and retrieval system products, excellent in all industrial fields. Jingpeng Machinery integrates global resources, continues to innovate, and makes unremitting efforts for better human well-being and a better working environment. In the field of transmission components, Jingpeng Machinery has become the best partner with high-quality professional manufacturing and solutions. We also provide technical support and industry analysis to meet customer needs. At the same time, we have a solid business team to ensure the stability of the foreign trade sales system and strong market development capabilities, so that our products can be exported to all parts of the world at the fastest speed. Jingpeng Machinery is a professional manufacturer of transmission control products and system technology products all over the world.

Contents

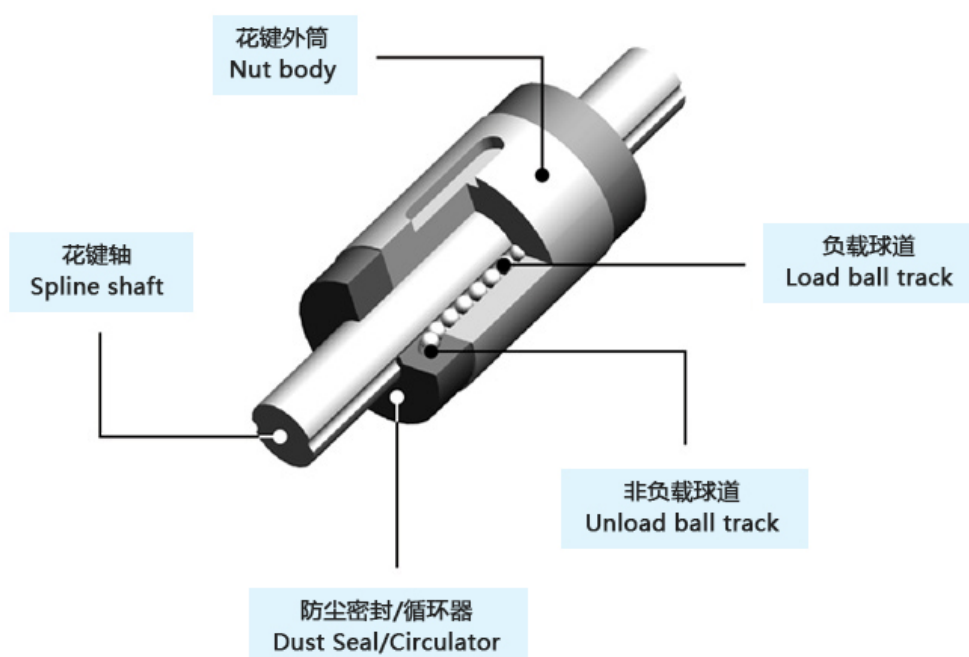
| | |
|--|----|
| ◆ SLT Series Specifications and Dimensions | 1 |
| ◆ SLF Series Specifications and Dimensions | 3 |
| ◆ SOT Series Specifications and Dimensions | 5 |
| ◆ SOF Series Specifications and Dimensions | 7 |
| ◆ LBS Series Specifications and Dimensions | 9 |
| ◆ LBF Series Specifications and Dimensions | 11 |
| ◆ LT Series Specifications and Dimensions | 13 |
| ◆ LTF Series Specifications and Dimensions | 14 |
| ◆ LTR-A Series Specifications and Dimensions | 16 |
| ◆ LTR Series Specifications and Dimensions | 18 |

1-1 Structure and Benefits of YOSO Ball Spline

The design of YOSO Ball spline is to utilize the friction through the contact of steel balls within in the Spline Nut and the grooves on the Spline Shaft. With YOSO MOTION's unique 40 ° angular contact design which enables the Ball spline delivers high sensitivity and extreme high load carrying capacity. The concept is optimal for the application involve with high speed, vibration, impacts of loading and precise positioning requirements. Also when the Ball spline is used to function as linear bushing, the Ball spline provides ten times loading capacity than the linear bush on the like model but with a compact profile. Namely, Durability and reliability is the reason to choose YOSO Ball spline in your application.

1-2 YOSO MOTION Nut Design and Shaft Specifications

YOSO MOTION Spline Nut is available in four different designs : SLT (Non-flange design), SLF (Flange design), SOT (Round design), SOF (Cylindrical flange design), Point of contacts on the Spline shaft is provided in two grooves (180°) (SLF/SLT 6~20), (SOT/ SOF 8~25) and four grooves (70°) base on the diameter of the Spline shaft. Also YOSO provides Hollow Spline shaft for alternative.



1-3 Features of YOSO MOTION Ball Spline

- **High Load-Carrying Capacity**

Every groove on the YOSO Spline shaft is precision ground to form a perfect 40° angular contact point. The concept of 40° contact design is to increase the load carrying capacity and rigidity to handle a greater moment load.

- **Zero Angular Clearance / Backlash**

Grooves on the YOSO Spline shaft are precision ground to form a perfect Gothic arch. The design eliminates clearance that could generate deflections, and therefore is best suited for the applications that require high precision.

- **High Sensitivity**

The unique YOSO 40° angular contact is designed to operate with the minimum friction while the design performs high sensitivity and rigidity.

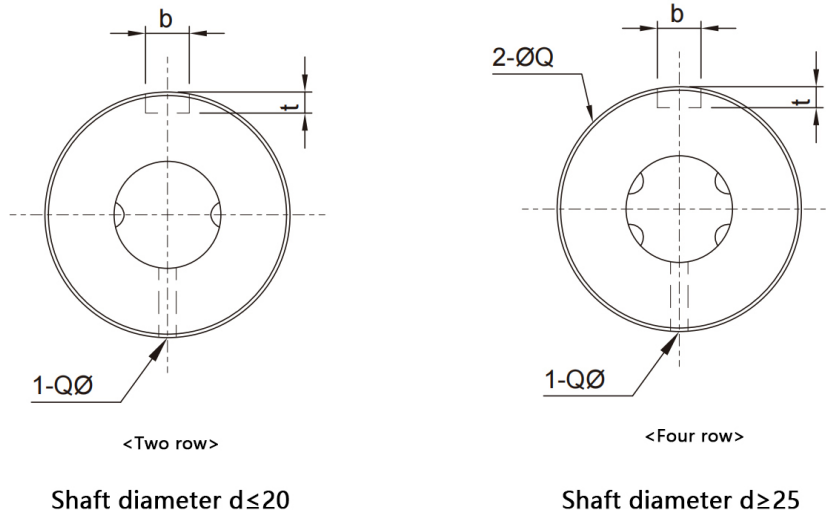
- **High Rigidity**

A wide contact angle and an appropriate level of preload are combined to provide high rigidity and stiffness.

- **Mount-Simple on Design**

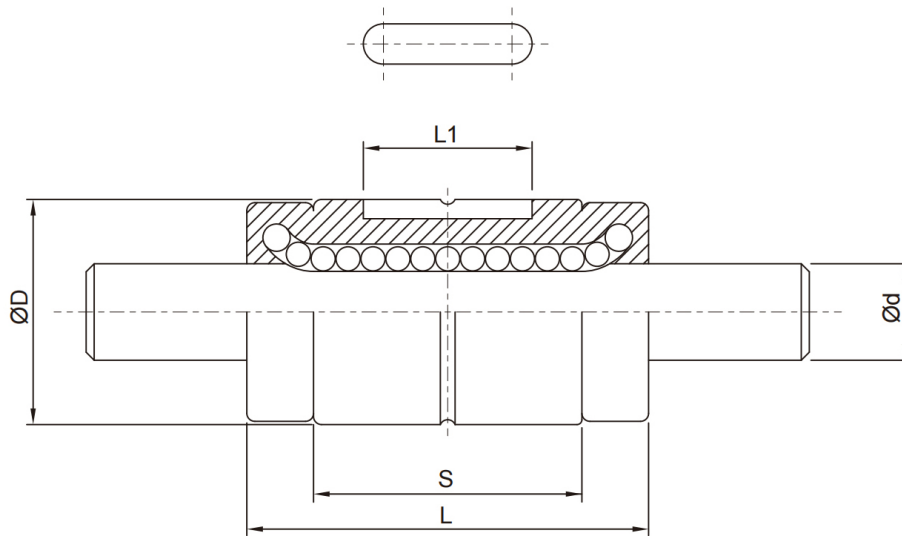
YOSO Ball Spline is a low maintenance design, therefore, when removing the spline nut is necessary due to the ball retaining design the steel balls will not fall apart like the traditional nut design.

SLT Series Specifications and Dimensions



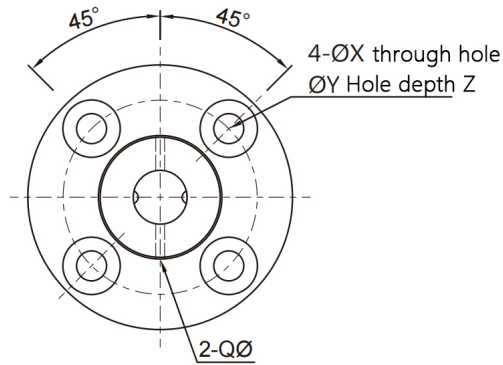
| Model No. | Diameter | | Row | Spline Nut Dimension | | | | Keyway Dimensions | | |
|-----------|----------|----|-----|----------------------|-----|------|------|-------------------|-----|-----------|
| | d | h7 | | D | L | S | L1 | Oil Hole | b | t |
| | | | | | | | | Q | H8 | 0.05 0 |
| SLT006 | 6 | | 2 | 14 | 25 | 16.7 | 10.5 | 1 | 2.5 | 1.2 |
| SLT008 | 8 | | 2 | 16 | 27 | 15.7 | 10.5 | 1.5 | 2.5 | 1.2 |
| SLT010 | 10 | | 2 | 21 | 33 | 20 | 13 | 1.5 | 3 | 1.5 |
| SLT013 | 13 | | 2 | 24 | 36 | 23 | 15 | 1.5 | 3 | 1.5 |
| SLT016 | 16 | | 2 | 31 | 50 | 34 | 17.5 | 2 | 3.5 | 2 |
| SLT020 | 20 | | 2 | 35 | 56 | 39.7 | 29 | 2 | 4 | 2.5 |
| SLT025 | 25 | | 4 | 42 | 71 | 50.3 | 36 | 3 | 4 | 2.5 |
| SLT030 | 30 | | 4 | 47 | 80 | 60 | 42 | 3 | 4 | 2.5 |
| SLT040 | 40 | | 4 | 64 | 100 | 70 | 52 | 4 | 6 | 3.5 |
| SLT050 | 50 | | 4 | 80 | 125 | 91 | 58 | 4 | 8 | 4 |

SLT Series Specifications and Dimensions

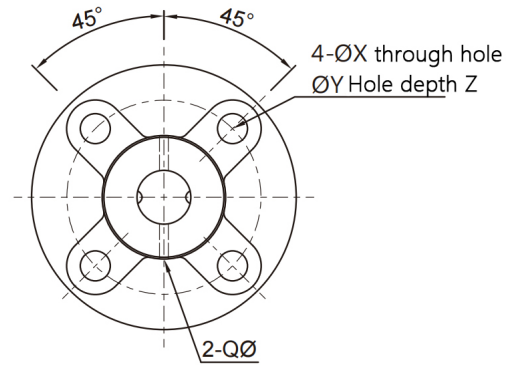


| Model No. | Basic Load Rating | | Basic Torsion | | Static Permissible Moment | | Weight | |
|-----------|-------------------|------|---------------|--------|---------------------------|--------|------------|--------------|
| | C | C0 | CT | C0T | MA1 | MA2 | Spline Nut | Spline Shaft |
| | kgf | kgf | kgf. m | kgf. m | kgf. m | kgf. m | g | kg/m |
| SLT006 | 137 | 225 | 0.46 | 0.76 | 0.39 | 3.48 | 14 | 0.22 |
| SLT008 | 137 | 225 | 0.6 | 0.99 | 0.39 | 3.82 | 16 | 0.39 |
| SLT010 | 285 | 397 | 1.62 | 2.25 | 0.95 | 8.53 | 37 | 0.6 |
| SLT013 | 396 | 540 | 2.89 | 3.94 | 1.5 | 12.46 | 52 | 1.03 |
| SLT016 | 545 | 849 | 4.77 | 7.43 | 3.71 | 26.09 | 130 | 1.56 |
| SLT020 | 724 | 1109 | 7.9 | 12.09 | 5.53 | 38 | 188 | 2.44 |
| SLT025 | 1003 | 1593 | 21.99 | 43.01 | 10.35 | 68.59 | 285 | 3.8 |
| SLT030 | 1160 | 1960 | 30.26 | 62.93 | 15.68 | 93.27 | 395 | 5.49 |
| SLT040 | 2972 | 4033 | 105.37 | 176.05 | 36.59 | 264.34 | 843 | 9.69 |
| SLT050 | 4086 | 5615 | 179.89 | 304.35 | 51.58 | 428.72 | 1758 | 15.19 |

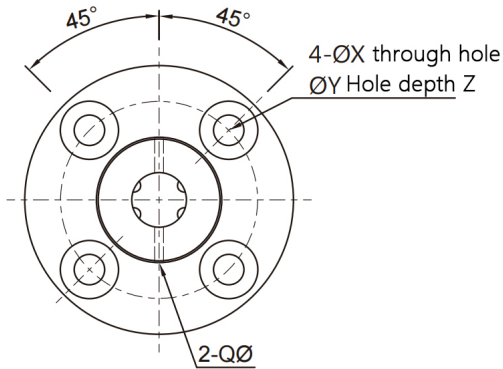
SLF Series Specifications and Dimensions



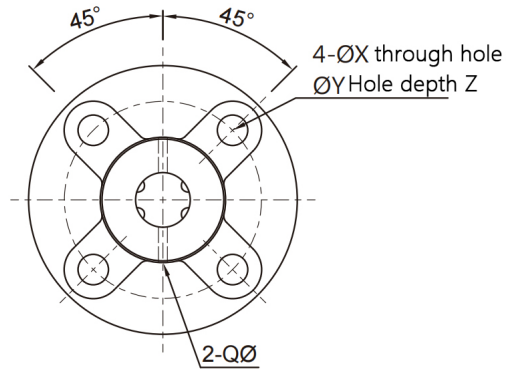
【Two Starts】 Type : 06、10、13



【Two Starts】 Type : 08、16、20



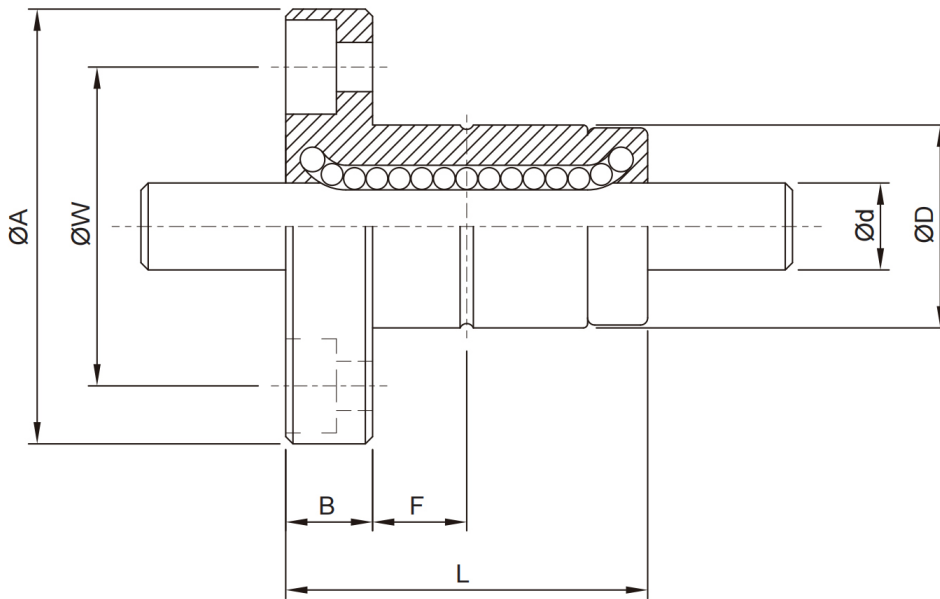
【Two Starts】 Type : 40、50



【Two Starts】 Type : 25、30

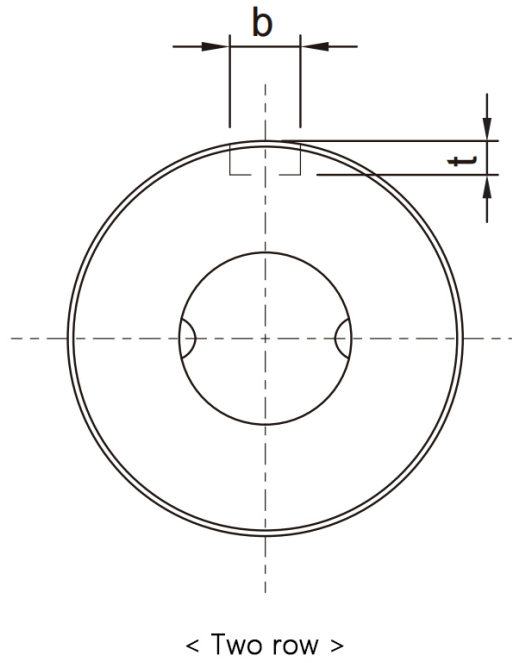
| Model No. | Diameter | | Spline Nut Dimension | | | | | | | | | |
|-----------|----------|-----|----------------------|-----|-----|----|------|----------|-----|---------------|------|-----|
| | d | Row | D | L | A | B | F | Oil hole | W | Mounting Hole | | |
| | h7 | | | | | | | Q | | X | Y | Z |
| SLF006 | 6 | 2 | 14 | 25 | 30 | 6 | 7.5 | 1 | 22 | 3.4 | 6.5 | 3.5 |
| SLF008 | 8 | 2 | 16 | 27 | 32 | 8 | 7.5 | 1.5 | 24 | 3.4 | 6.5 | 4.5 |
| SLF010 | 10 | 2 | 21 | 33 | 42 | 9 | 10.5 | 1.5 | 32 | 4.5 | 8 | 4 |
| SLF013 | 13 | 2 | 24 | 36 | 44 | 9 | 11 | 1.5 | 33 | 4.5 | 8 | 4.5 |
| SLF016 | 16 | 2 | 31 | 50 | 51 | 10 | 18 | 2 | 40 | 4.5 | 8 | 6 |
| SLF020 | 20 | 2 | 35 | 56 | 58 | 10 | 18 | 2 | 45 | 5.5 | 9.5 | 5.4 |
| SLF025 | 25 | 4 | 42 | 71 | 65 | 13 | 26.5 | 3 | 52 | 5.5 | 9.5 | 8 |
| SLF030 | 30 | 4 | 47 | 80 | 75 | 13 | 30 | 3 | 60 | 6.6 | 11 | 8 |
| SLF040 | 40 | 4 | 64 | 100 | 100 | 18 | 36 | 4 | 82 | 9 | 14 | 12 |
| SLF050 | 50 | 4 | 80 | 125 | 124 | 20 | 46.5 | 4 | 102 | 11 | 17.5 | 12 |

SLF Series Specifications and Dimensions



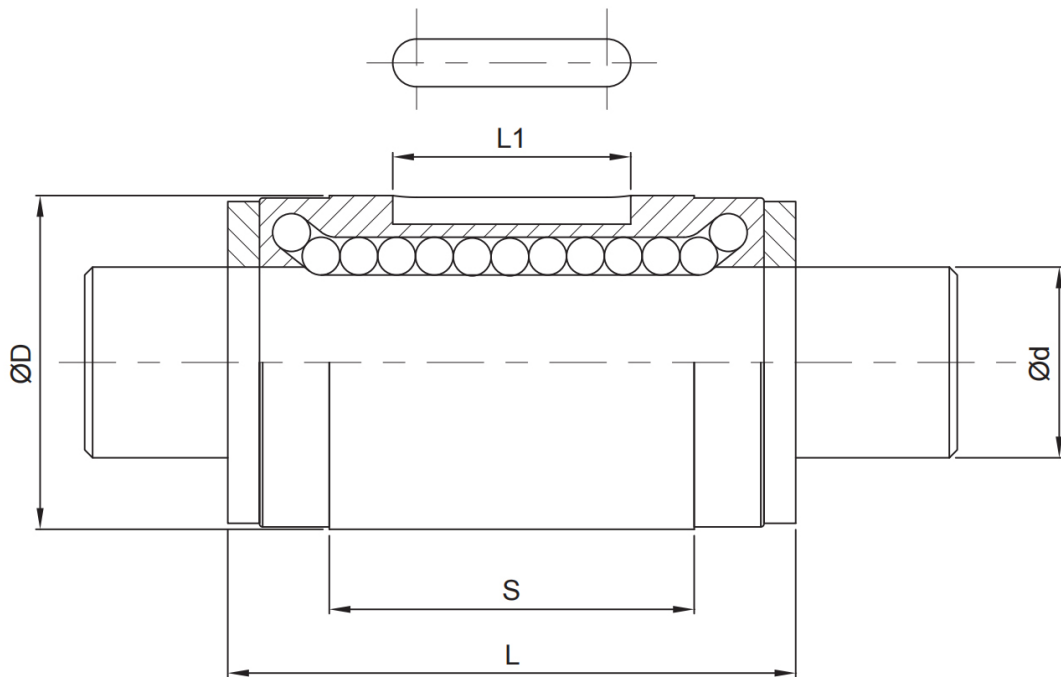
| Model No. | Basic Load Rating | | Basic Torsion | | Static Permissible Moment | | Weight | |
|-----------|-------------------|------|---------------|--------|---------------------------|--------|------------|--------------|
| | C | C0 | CT | C0T | MA1 | MA2 | Spline Nut | Spline Shaft |
| | kgf | kgf | kgf. m | kgf. m | kgf. m | kgf. m | g | kg/m |
| SLF006 | 137 | 225 | 0.46 | 0.76 | 0.39 | 3.48 | 36.7 | 0.22 |
| SLF008 | 137 | 225 | 0.6 | 0.99 | 0.39 | 3.82 | 47 | 0.39 |
| SLF010 | 285 | 397 | 1.62 | 2.25 | 0.95 | 8.53 | 100 | 0.6 |
| SLF013 | 396 | 540 | 2.89 | 3.94 | 1.5 | 12.46 | 117 | 1.03 |
| SLF016 | 545 | 849 | 4.77 | 7.43 | 3.71 | 26.09 | 226 | 1.56 |
| SLF020 | 724 | 1109 | 7.9 | 12.09 | 5.53 | 38 | 303 | 2.44 |
| SLF025 | 1003 | 1593 | 21.99 | 43.01 | 10.35 | 68.59 | 458 | 3.8 |
| SLF030 | 1160 | 1980 | 30.26 | 62.93 | 15.68 | 93.27 | 633 | 5.49 |
| SLF040 | 2972 | 4033 | 105.37 | 176.05 | 36.59 | 246.34 | 1430 | 9.69 |
| SLF050 | 4086 | 5615 | 179.89 | 304.35 | 51.58 | 428.72 | 2756 | 15.19 |

SOT Series Specifications and Dimensions



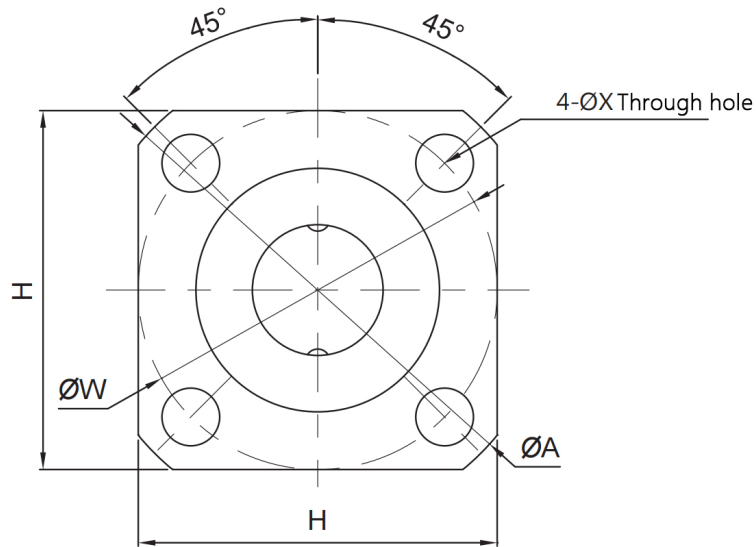
| Model No. | Diameter | | Row | Spline Nut Dimension | | | | Keyway Dimensions | |
|-----------|----------|----|-----|----------------------|----|------|-----|-------------------|-----|
| | d | h7 | | D | L | S | L1 | b | t |
| | H8 | | | | | | | 0.05 0 | |
| SOT008 | 8 | | 2 | 15 | 25 | 14.6 | 8.5 | 2.5 | 1.5 |
| SOT010 | 10 | | 2 | 19 | 30 | 18.2 | 11 | 3 | 1.8 |
| SOT012 | 12 | | 2 | 21 | 35 | 23 | 15 | 3 | 1.8 |
| SOT015 | 13.6 | | 2 | 23 | 40 | 27 | 20 | 3.5 | 2 |
| SOT020 | 18.2 | | 2 | 30 | 50 | 33 | 26 | 4 | 2.5 |
| SOT025 | 22.6 | | 2 | 37 | 60 | 39.2 | 29 | 5 | 3 |

SOT Series Specifications and Dimensions



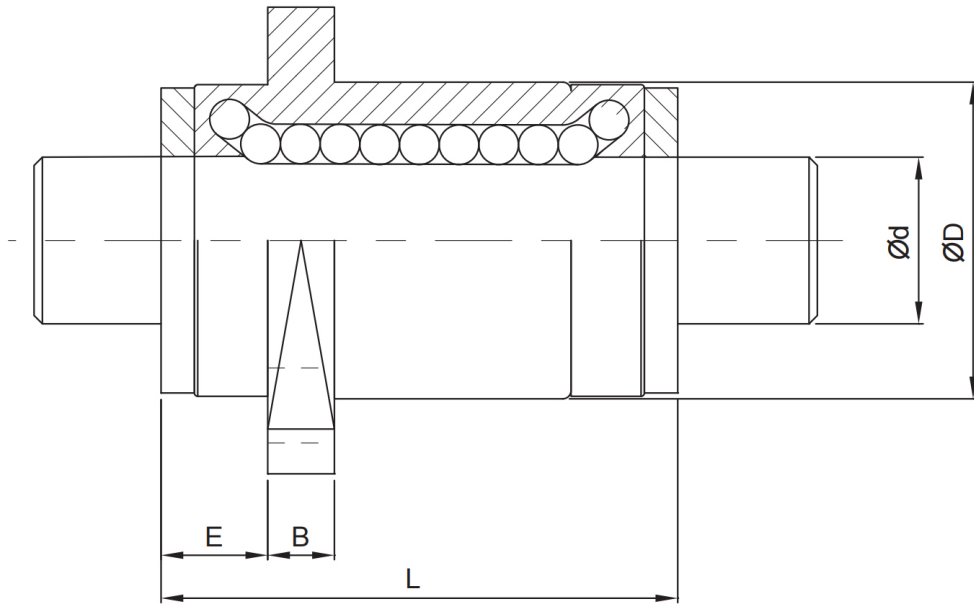
| Model No. | Basic Load Rating | | Basic Torsion | | Static Permissible Moment | | Weight | |
|-----------|-------------------|------|---------------|--------|---------------------------|--------|------------|--------------|
| | C | C0 | CT | C0T | MA1 | MA2 | Spline Nut | Spline Shaft |
| | kgf | kgf | kgf. m | kgf. m | kgf. m | kgf. m | g | kg/m |
| SOT008 | 121 | 136 | 0.56 | 0.63 | 0.34 | 2.24 | 15.9 | 0.39 |
| SOT010 | 192 | 219 | 1.11 | 1.27 | 0.71 | 4.23 | 31.5 | 0.61 |
| SOT012 | 222 | 274 | 1.51 | 1.87 | 1.08 | 6.02 | 44 | 0.88 |
| SOT015 | 426 | 619 | 3.19 | 4.65 | 2.83 | 15.49 | 59.5 | 1.11 |
| SOT020 | 673 | 922 | 6.73 | 9.22 | 4.95 | 29.36 | 130 | 2.02 |
| SOT025 | 1142 | 1458 | 14.17 | 18.14 | 9.46 | 56.17 | 220 | 3.1 |

SOF Series Specifications and Dimensions



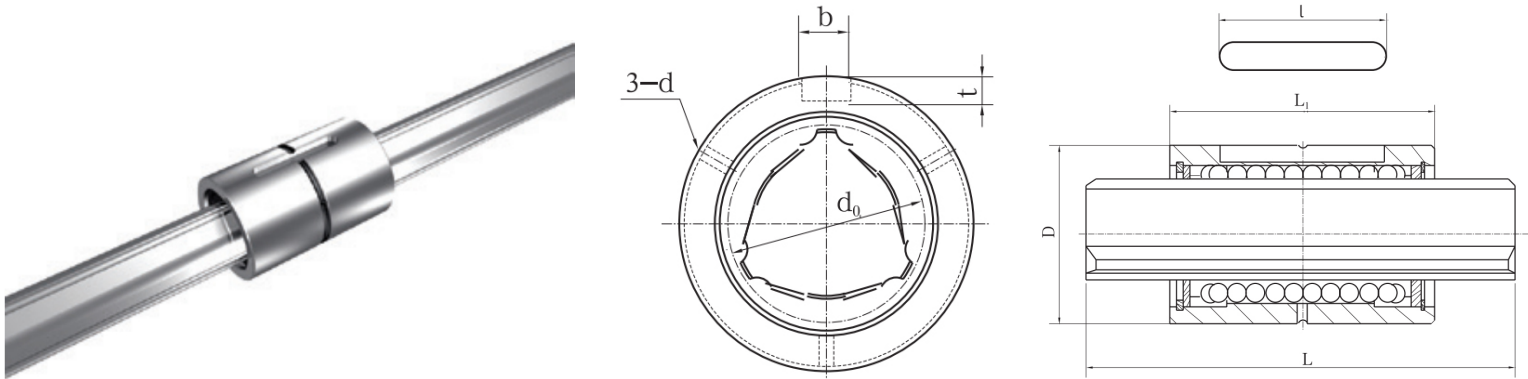
| Model No. | Diameter | | Row | Spline Nut Dimension | | | | | | | Mounting Hole |
|-----------|----------|----|-----|----------------------|----|----|-----|------|-----|-----|---------------|
| | d | h7 | | D | L | A | B | E | H | W | X |
| | SOF008 | 8 | | | 2 | 15 | 25 | 28 | 3.8 | 5.2 | 22 |
| SOF010 | 10 | | 2 | 19 | 30 | 36 | 4.1 | 5.9 | 28 | 28 | 4.5 |
| SOF012 | 12 | | 2 | 21 | 35 | 38 | 4 | 6 | 30 | 30 | 4.5 |
| SOF015 | 13.6 | | 2 | 23 | 40 | 40 | 4.5 | 6.5 | 31 | 32 | 4.5 |
| SOF020 | 18.2 | | 2 | 30 | 50 | 46 | 5.5 | 8.5 | 35 | 38 | 4.5 |
| SOF025 | 22.6 | | 2 | 37 | 60 | 57 | 6.6 | 10.4 | 43 | 47 | 5.5 |

SOF Series Specifications and Dimensions



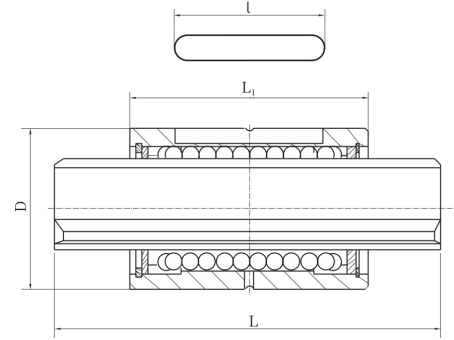
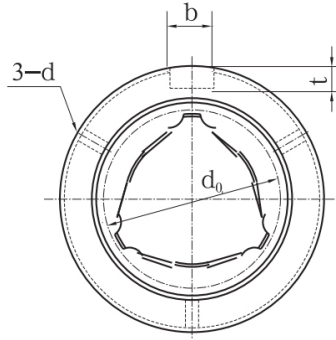
| Model No. | Basic Load Rating | | Basic Torsion | | Static Permissible Moment | | Weight | |
|-----------|-------------------|------|---------------|--------|---------------------------|--------|------------|--------------|
| | C | C0 | CT | C0T | MA1 | MA2 | Spline Nut | Spline Shaft |
| | kgf | kgf | kgf. m | kgf. m | kgf. m | kgf. m | g | kg/m |
| SOF008 | 121 | 136 | 0.56 | 0.63 | 0.34 | 2.24 | 23.5 | 0.39 |
| SOF010 | 192 | 219 | 1.11 | 1.27 | 0.71 | 4.23 | 45 | 0.61 |
| SOF012 | 222 | 274 | 1.51 | 1.87 | 1.08 | 6.02 | 59 | 0.88 |
| SOF015 | 426 | 619 | 3.19 | 4.65 | 2.83 | 15.49 | 77 | 1.11 |
| SOF020 | 673 | 922 | 6.73 | 9.22 | 4.95 | 29.36 | 150 | 2.02 |
| SOF025 | 1142 | 1458 | 14.17 | 18.14 | 9.46 | 56.17 | 255 | 3.1 |

LBS Series Specifications and Dimensions



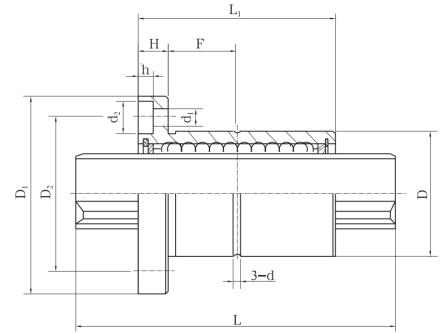
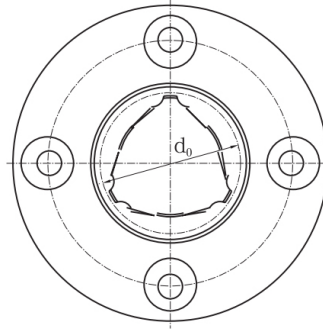
| Model No. | Nominal shaft diameter | External diameter | | Sleeve length | | Maximum shaft length | Keyway width | Keyway depth | | Keyway length | Oil hole | Basic rated torque | | Basic load rating (radial) | |
|-----------|------------------------|-------------------|-------------|---------------|-----------|----------------------|--------------|--------------|-------------------|-------------------|--------------------|--------------------|---------|----------------------------|-------|
| | d0 | D | L1 | L | b | t | l | d | Dynamic torque CT | Static torque C0T | Rated dynamic load | Rated static load | | | |
| | | | | | | | | | N-m | N-m | C(kN) | C0(kN) | | | |
| LBS15 | 15 | 23 | 0 -0.013 | 40 | 0 -0.3 | 400 | 3.5H8 | 2 | 0 -0.3 | 20 | 2 | 27.8 | 65.2 | 3.9 | 8.1 |
| LBS20 | 20 | 30 | 0 -0.013 | 50 | 0 -0.3 | 600 | 4H8 | 2.5 | +0.1 0 | 26 | 3 | 62.3 | 135.2 | 6.6 | 12.7 |
| LBS25 | 25 | 38 | 0 -0.016 | 60 | 0 -0.3 | 800 | 5H8 | 3 | +0.2 0 | 36 | 3 | 127.3 | 268.3 | 10.9 | 20.2 |
| LBS30 | 30 | 45 | 0 -0.016 | 70 | 0 -0.3 | 1400 | 6H8 | 3 | +0.2 0 | 40 | 3 | 155.7 | 318.7 | 11.1 | 20 |
| LBS32 | 32 | 48 | 0 -0.016 | 70 | 0 -0.3 | 1400 | 8H8 | 4 | +0.2 0 | 40 | 3 | 236.4 | 459.9 | 15.8 | 27.1 |
| LBS40 | 40 | 60 | 0 -0.019 | 90 | 0 -0.3 | 1500 | 10H8 | 5 | +0.2 0 | 56 | 4 | 548 | 1081.9 | 29.3 | 50.9 |
| LBS50 | 50 | 75 | 0 -0.019 | 100 | 0 -0.3 | 1500 | 14H8 | 5.5 | +0.2 0 | 60 | 4 | 880.6 | 1711.6 | 37.7 | 64.5 |
| LBS70 | 70 | 100 | 0 -0.022 | 110 | 0 -0.3 | 1700 | 18H8 | 6 | +0.1 0 | 68 | 2 | 2488 | 4141.1 | 76.1 | 111.5 |
| LBS85 | 85 | 120 | 0 -0.022 | 140 | 0 -0.3 | 1900 | 20H8 | 7 | +0.1 0 | 80 | 3 | 3978 | 6927.4 | 100.2 | 153.6 |
| LBS100 | 100 | 140 | 0 -0.025 | 160 | 0 -0.4 | 1900 | 28H8 | 9 | +0.1 0 | 93 | 3 | 6905.9 | 11737.2 | 147.9 | 221.3 |

LBS Series Specifications and Dimensions



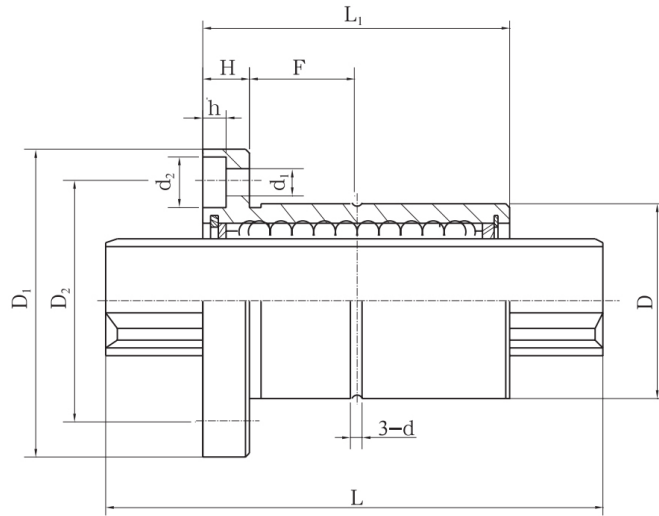
| Model No. | Nominal shaft diameter | External diameter | | Sleeve length | | Maximum shaft length | Keyway width | Keyway depth | | Keyway length | Oil hole | Basic rated torque | | Basic load rating (radial) | |
|-----------|------------------------|-------------------|-------------|---------------|-----------|----------------------|--------------|--------------|-----------|---------------|----------|--------------------|-------------------|----------------------------|-------------------|
| | d0 | D | | L1 | | L | b | t | | l | d | Dynamic torque CT | Static torque C0T | Rated dynamic load | Rated static load |
| | | | | | | | | | | | | N-m | N-m | C(kN) | C0(kN) |
| LBS15L | 15 | 23 | 0 -0.013 | 50 | 0 -0.3 | 400 | 3.5H8 | 2 | 0 -0.3 | 20 | 2 | 38.9 | 105.9 | 5.5 | 13.3 |
| LBS20L | 20 | 30 | 0 -0.013 | 60 | 0 -0.3 | 600 | 4H8 | 2.5 | +0.1 0 | 26 | 3 | 100 | 270.5 | 10.719 | 25.499 |
| LBS25L | 25 | 38 | 0 -0.016 | 70 | 0 -0.3 | 800 | 5H8 | 3 | +0.2 0 | 36 | 3 | 152 | 345 | 13 | 26 |
| LBS30L | 30 | 45 | 0 -0.016 | 80 | 0 -0.3 | 1400 | 4H8 | 3 | +0.2 0 | 26 | 3 | 192.2 | 425.8 | 16.3 | 33.1 |
| LBS32L | 32 | 48 | 0 -0.016 | 80 | 0 -0.3 | 1400 | 8H8 | 4 | +0.2 0 | 40 | 3 | 288.9 | 613.2 | 19.3 | 36.1 |
| LBS40L | 40 | 60 | 0 -0.019 | 100 | 0 -0.3 | 1500 | 10H8 | 5 | +0.2 0 | 56 | 4 | 651.9 | 1390.9 | 34.9 | 65.5 |
| LBS50L | 50 | 75 | 0 -0.019 | 112 | 0 -0.3 | 1500 | 14H8 | 5.5 | +0.2 0 | 60 | 4 | 1048 | 2200.7 | 44.9 | 82.9 |
| LBS60L | 60 | 90 | 0 -0.022 | 127 | 0 -0.3 | 1500 | 16H8 | 6 | +0.2 0 | 70 | 4 | 2135.9 | 4172.9 | 76.2 | 131.1 |
| LBS70L | 70 | 100 | 0 -0.022 | 135 | 0 -0.3 | 1700 | 18H8 | 6 | +0.1 0 | 68 | 4 | 3153.4 | 5797.6 | 96.5 | 156.1 |
| LBS85L | 85 | 120 | 0 -0.022 | 155 | 0 -0.3 | 1900 | 20H8 | 7 | +0.1 0 | 80 | 5 | 4437.2 | 8082 | 111.8 | 179.2 |
| LBS100L | 100 | 140 | 0 -0.025 | 175 | 0 -0.4 | 1900 | 28H8 | 9 | +0.1 0 | 93 | 5 | 6943.8 | 11737.2 | 148.7 | 221.3 |
| LBS120L | 120 | 160 | 0 -0.025 | 200 | 0 -0.4 | 1900 | 28H8 | 9 | +0.1 0 | 123 | 6 | 10153.5 | 18779.5 | 181.3 | 295 |
| LBS150L | 150 | 205 | 0 -0.029 | 250 | 0 -0.4 | 1900 | 32H8 | 10 | +0.1 0 | 157 | 6 | 19564.1 | 33532.7 | 279.4 | 421.5 |

LBF Series Specifications and Dimensions



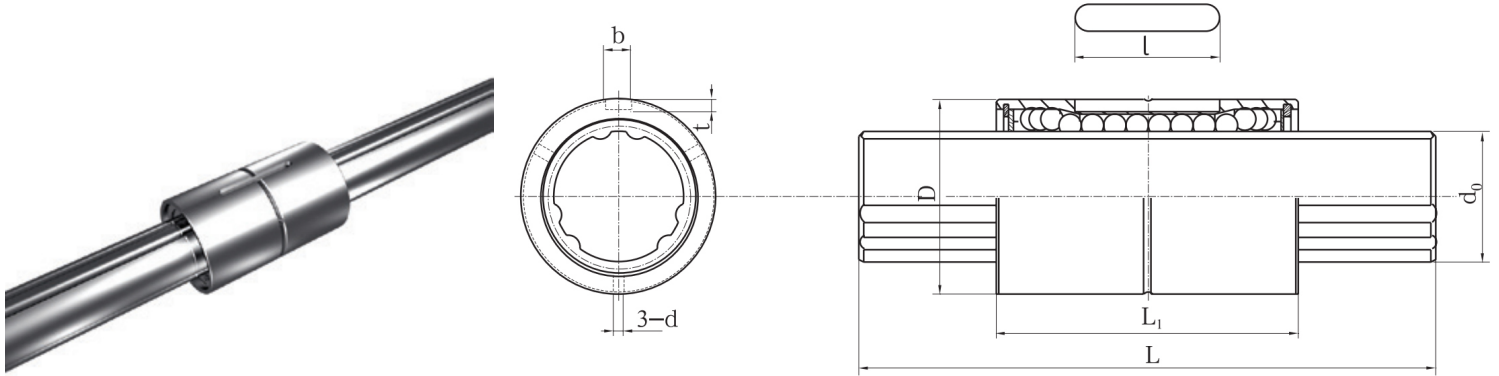
| Model No. | Nominal shaft diameter d_0 | External diameter D | | Sleeve length L_1 | | Maximum shaft length L | Flange diameter D_1 | | Installation hole center D_2 | Flange thickness H |
|-----------|---------------------------------|--------------------------|-------------|------------------------|-----------|-----------------------------|--------------------------|-----------|-----------------------------------|-------------------------|
| | | | | | | | | | | |
| LBF15 | 15 | 23 | 0 -0.013 | 40 | 0 -0.3 | 400 | 43 | 0 -0.2 | 32 | 7 |
| LBF20 | 20 | 30 | 0 -0.013 | 50 | 0 -0.3 | 600 | 49 | 0 -0.2 | 38 | 7 |
| LBF25 | 25 | 38 | 0 -0.016 | 60 | 0 -0.3 | 800 | 60 | 0 -0.2 | 47 | 9 |
| LBF30 | 30 | 45 | 0 -0.016 | 70 | 0 -0.3 | 1400 | 70 | 0 -0.2 | 54 | 10 |
| LBF32 | 32 | 48 | 0 -0.016 | 70 | 0 -0.3 | 1400 | 73 | 0 -0.2 | 57 | 10 |
| LBF40 | 50 | 57 | 0 -0.019 | 90 | 0 -0.3 | 1500 | 90 | 0 -0.2 | 70 | 14 |
| LBF50 | 50 | 70 | 0 -0.019 | 100 | 0 -0.3 | 1500 | 108 | 0 -0.2 | 86 | 16 |
| LBF60 | 60 | 85 | 0 -0.022 | 127 | 0 -0.3 | 1500 | 124 | 0 -0.2 | 102 | 18 |
| LBF70S | 70 | 100 | 0 -0.022 | 110 | 0 -0.3 | 1700 | 142 | 0 -0.2 | 117 | 20 |
| LBF70 | 70 | 100 | 0 -0.022 | 135 | 0 -0.3 | 1700 | 142 | 0 -0.2 | 117 | 20 |
| LBF85S | 85 | 120 | 0 -0.025 | 140 | 0 -0.3 | 1900 | 168 | 0 -0.2 | 138 | 22 |
| LBF85 | 85 | 120 | 0 -0.022 | 155 | 0 -0.3 | 1900 | 168 | 0 -0.2 | 138 | 22 |
| LBF100 | 100 | 135 | 0 -0.025 | 160 | 0 -0.4 | 1900 | 195 | 0 -0.2 | 162 | 25 |

LBF Series Specifications and Dimensions



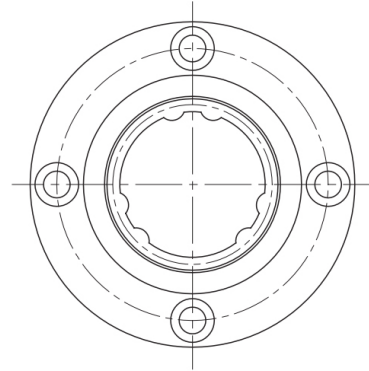
| Model No. | Counterbore depth h | Oil hole d | Counterbore diameter d ₂ | Through hole diameter d ₁ | Oil hole position F | Basic rated torque | | Basic rated load (radial) | |
|-----------|------------------------|---------------|--|---|------------------------|--------------------------------------|--------------------------------------|-----------------------------|--|
| | | | | | | Dynamic torque C ^T N-m | Static torque C ^{OT} N-m | Rated dynamic load C(kN) | Rated static load C ₀ (kN) |
| LBF15 | 4.4 | 2 | 8 | 4.5 | 13 | 27.8 | 65.2 | 3.9 | 8.1 |
| LBF20 | 4.4 | 3 | 8 | 4.5 | 18 | 62.3 | 135.2 | 6.6 | 12.7 |
| LBF25 | 5 | 3 | 10 | 5.8 | 21 | 127.3 | 268.3 | 10.9 | 20.2 |
| LBF30 | 6 | 3 | 11 | 6.6 | 25 | 155.7 | 318.7 | 11.1 | 20 |
| LBF32 | 6 | 3 | 12 | 7 | 25 | 236.4 | 459.9 | 15.8 | 27.1 |
| LBF40 | 7 | 4 | 15 | 9 | 31 | 548 | 1081.9 | 29.3 | 50.9 |
| LBF50 | 9 | 4 | 18 | 11 | 34 | 880.6 | 1711.6 | 37.7 | 64.5 |
| LBF60 | 11 | 4 | 18 | 11 | 45.5 | 2135.9 | 4172.9 | 76.2 | 131.1 |
| LBF70S | 13 | 4 | 20 | 13.5 | 35 | 2488 | 4141.1 | 76.1 | 111.5 |
| LBF70 | 13 | 4 | 20 | 14 | 47.5 | 3153.4 | 5797.6 | 96.5 | 156.1 |
| LBF85S | 13 | 4 | 20 | 13.5 | 48 | 3978 | 6927.4 | 100.2 | 153.6 |
| LBF85 | 13 | 5 | 20 | 13 | 55.5 | 4437.2 | 8082 | 111.8 | 179.2 |
| LBF100 | 17.5 | 5 | 26 | 18 | 55 | 6905.9 | 11737.2 | 147.9 | 221.3 |

LT Series Specifications and Dimensions



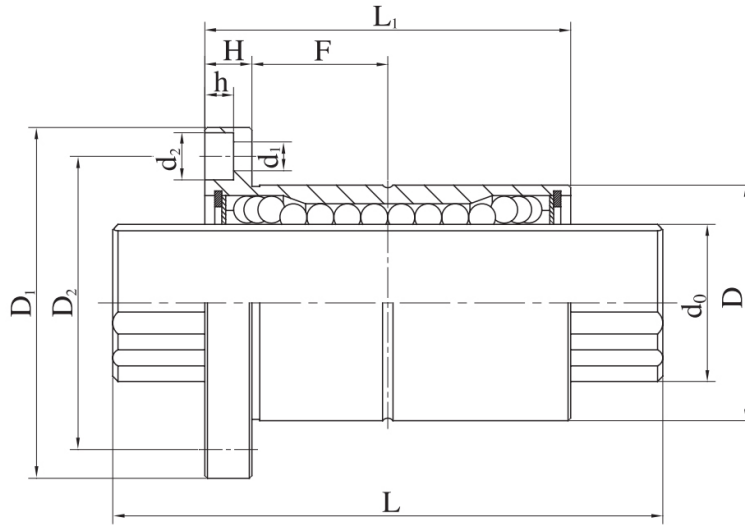
| Model NO. | Shaft outer diameter $d_0(h7)$ | External diameter $D(h6)$ | Sleeve length L_1 | Maximum shaft length L | Keyway width b | Keyway depth t | Keyway length l | Oil hole d | Basic rated torque | | Basic load rating (radial) | |
|-----------|------------------------------------|------------------------------------|----------------------------------|--------------------------|------------------|----------------------------------|-------------------|--------------|--------------------------|----------------------------|----------------------------|-----------------------------|
| | | | | | | | | | Dynamic torque C_T N-m | Static torque C_{OT} N-m | Rated dynamic load $C(kN)$ | Rated static load $C_0(kN)$ |
| LT16 | 16 ⁰ _{-0.018} | 31 ⁰ _{-0.016} | 50 ⁰ _{-0.2} | 500 | 3.5H8 | 2 ^{+0.1} ₀ | 17.5 | 2 | 32 | 30 | 7.5 | 15.6 |
| LT20 | 20 ⁰ _{-0.021} | 35 ⁰ _{-0.016} | 63 ⁰ _{-0.2} | 600 | 4H8 | 2.5 ^{+0.1} ₀ | 29 | 2 | 55 | 55 | 10.1 | 24.7 |
| LT25 | 25 ⁰ _{-0.021} | 42 ⁰ _{-0.016} | 71 ⁰ _{-0.3} | 800 | 4H8 | 2.5 ^{+0.1} ₀ | 36 | 3 | 103 | 105 | 13.7 | 30.1 |
| LT30 | 30 ⁰ _{-0.021} | 48 ⁰ _{-0.016} | 80 ⁰ _{-0.3} | 1400 | 4H8 | 2.5 ^{+0.1} ₀ | 40 | 3 | 148 | 171 | 17.1 | 37.1 |
| LT40 | 40 ⁰ _{-0.025} | 64 ⁰ _{-0.019} | 100 ⁰ _{-0.3} | 1500 | 6H8 | 3.5 ^{+0.1} ₀ | 52 | 4 | 375 | 415 | 32.1 | 70.2 |
| LT50 | 50 ⁰ _{-0.025} | 80 ⁰ _{-0.019} | 125 ⁰ _{-0.3} | 1500 | 8H8 | 4 ^{+0.2} ₀ | 58 | 4 | 760 | 840 | 49.4 | 104.9 |
| LT60 | 60 ⁰ _{-0.03} | 90 ⁰ _{-0.022} | 140 ⁰ _{-0.3} | 1500 | 12H8 | 5 ^{+0.2} ₀ | 67 | 5 | 1040 | 1220 | 64.2 | 128.2 |
| LT80 | 80 ⁰ _{-0.03} | 120 ⁰ _{-0.022} | 160 ⁰ _{-0.4} | 1700 | 16H8 | 6 ^{+0.2} ₀ | 76 | 5 | 1920 | 2310 | 87.3 | 170.7 |
| LT100 | 100 ⁰ _{-0.035} | 150 ⁰ _{-0.025} | 190 ⁰ _{-0.4} | 1900 | 20H8 | 7 ^{+0.2} ₀ | 110 | 5 | 3010 | 3730 | 109.9 | 222 |
| LT120 | 120 ⁰ _{-0.035} | 180 ⁰ _{-0.025} | 220 ⁰ _{-0.4} | 1900 | 32H8 | 11 ^{+0.2} ₀ | 120 | 6 | 4100 | 5200 | 176.5 | 347 |

LTF Series Specifications and Dimensions



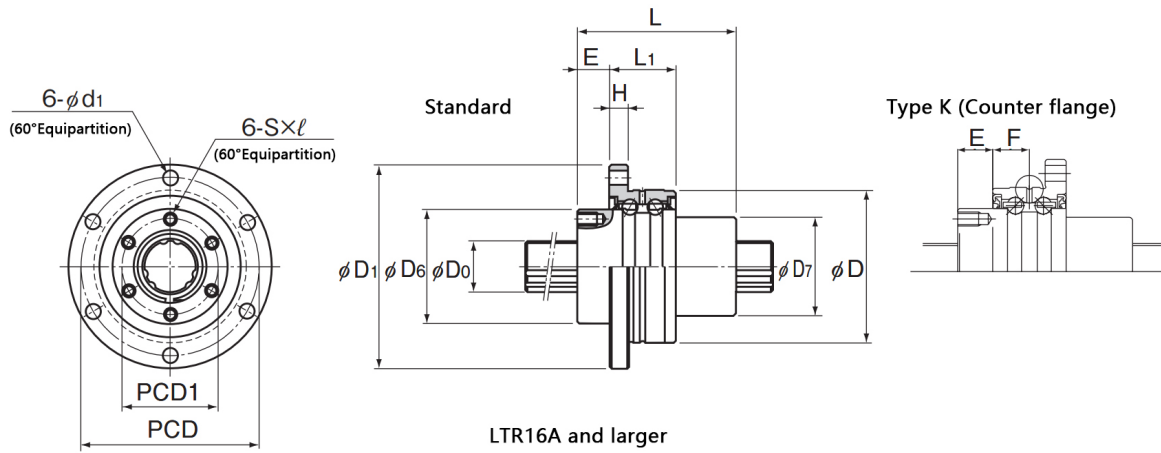
| Model NO. | Shaft outer diameter d0(h7) | | external diameter D(h6) | | Length of outer sleeve L1 | | Maximum shaft length L | Flange diameter D1 | | Installation hole center distance D2 | Flange thickness H |
|-----------|-----------------------------|-------------|-------------------------|-------------|---------------------------|-----------|------------------------|--------------------|-----------|--------------------------------------|--------------------|
| LTF16 | 16 | 0 -0.018 | 31 | 0 -0.016 | 50 | 0 -0.2 | 500 | 51 | 0 -0.2 | 40 | 7 |
| LTF20 | 20 | 0 -0.021 | 35 | 0 -0.016 | 63 | 0 -0.2 | 600 | 58 | 0 -0.2 | 45 | 9 |
| LTF25 | 25 | 0 -0.021 | 42 | 0 -0.016 | 71 | 0 -0.3 | 800 | 65 | 0 -0.3 | 52 | 9 |
| LTF30 | 30 | 0 -0.021 | 48 | 0 -0.016 | 80 | 0 -0.3 | 1400 | 75 | 0 -0.3 | 60 | 10 |
| LTF40 | 40 | 0 -0.025 | 64 | 0 -0.019 | 100 | 0 -0.3 | 1500 | 100 | 0 -0.3 | 82 | 14 |
| LTF50 | 50 | 0 -0.025 | 80 | 0 -0.019 | 125 | 0 -0.3 | 1500 | 124 | 0 -0.3 | 102 | 16 |
| LTF60 | 60 | 0 -0.003 | 90 | 0 -0.022 | 140 | 0 -0.3 | 1500 | 134 | 0 -0.3 | 112 | 16 |
| LTF80 | 80 | 0 -0.003 | 120 | 0 -0.022 | 160 | 0 -0.4 | 1700 | 168 | 0 -0.3 | 144 | 20 |
| LTF100 | 100 | 0 -0.035 | 150 | 0 -0.025 | 190 | 0 -0.4 | 1900 | 200 | 0 -0.3 | 170 | 25 |
| LTF120 | 120 | 0 -0.035 | 180 | 0 -0.025 | 220 | 0 -0.4 | 1900 | 252 | 0 -0.3 | 216 | 30 |

LTF Series Specifications and Dimensions



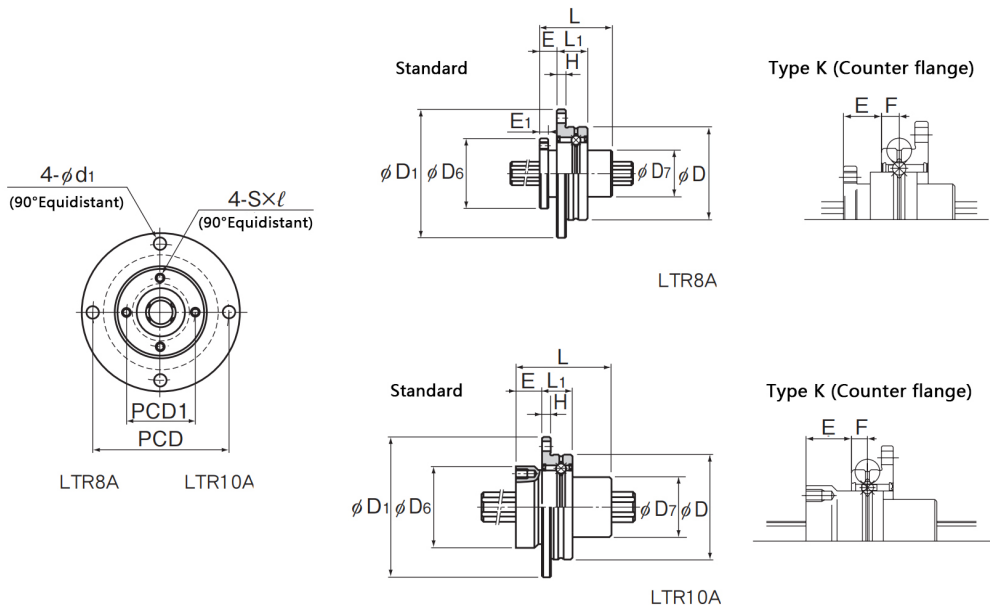
| Model NO. | Counterbore depth h | Counterbore diameter d_2 | Through hole diameter d_1 | Oil hole d | Oil hole position F | Basic rated torque | | Basic load rating (radial) | |
|-----------|--------------------------|-------------------------------|--------------------------------|-----------------|--------------------------|-----------------------------|-------------------------------|--------------------------------|---------------------------------|
| | | | | | | Dynamic torque C_T N-m | Static torque C_{0T} N-m | Rated dynamic load C (kN) | Rated static load C_0 (kN) |
| LTF16 | 4.4 | 8 | 4.5 | 2 | 18 | 32 | 30 | 7.5 | 15.6 |
| LTF20 | 5.4 | 9.5 | 5.5 | 2 | 22.5 | 55 | 55 | 10.1 | 24.7 |
| LTF25 | 5.4 | 9.5 | 5.5 | 3 | 26.5 | 103 | 105 | 13.7 | 30.1 |
| LTF30 | 6.5 | 11 | 6.6 | 3 | 30 | 148 | 171 | 17.1 | 37.1 |
| LTF40 | 8.6 | 14 | 9 | 4 | 36 | 375 | 415 | 32.1 | 70.2 |
| LTF50 | 11 | 17.5 | 11 | 4 | 46.5 | 760 | 840 | 49.4 | 104.9 |
| LTF60 | 11 | 18 | 11 | 5 | 54 | 1040 | 1220 | 64.2 | 128.2 |
| LTF80 | 12.8 | 20 | 13.5 | 5 | 60 | 1920 | 2310 | 87.3 | 170.7 |
| LTF100 | 16.8 | 26 | 17.5 | 5 | 70 | 3010 | 3730 | 109.9 | 222 |
| LTF120 | 20.6 | 32 | 22 | 6 | 80 | 4100 | 5200 | 176.5 | 347 |

LTR-A Series Specifications and Dimensions



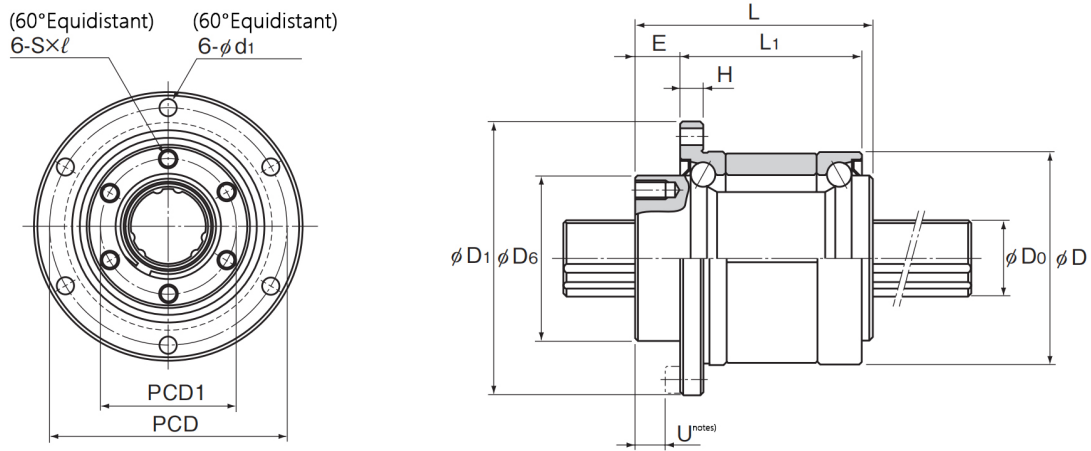
| Model NO. | Female spline size | | | | | | | | | | | | | | | |
|-----------|--------------------|------------------|-------------|-----------------------|----------|----|----|------|---------------|-------------|------------------------|----|-----|------|--------|-----|
| | External diameter | | length L | Flange diameter D1 | D6 h7 | D7 | H | L1 | Standard E | K Type E | Oil hole position F | E1 | PCD | PCD1 | s x l | d1 |
| | D | Tolerance | | | | | | | | | | | | | | |
| LTR8 A | 32 | -0.009 -0.025 | 25 | 44 | 24 | 16 | 3 | 10.5 | 6 | 8.5 | 4 | 3 | 38 | 19 | M2.6×3 | 3.4 |
| LTR10 A | 36 | | 33 | 48 | 28 | 21 | 3 | 10.5 | 9 | 11.5 | 4 | - | 42 | 23 | M3×4 | 3.4 |
| LTR16 A | 48 | | 50 | 64 | 36 | 31 | 6 | 21 | 10 | 10 | 10.5 | - | 56 | 30 | M4×6 | 4.5 |
| LTR20 A | 56 | -0.010 -0.029 | 63 | 72 | 43.5 | 35 | 6 | 21 | 12 | 12 | 10.5 | - | 64 | 36 | M5×8 | 4.5 |
| LTR25 A | 66 | | 71 | 86 | 52 | 42 | 7 | 25 | 13 | 13 | 12.5 | - | 75 | 44 | M5×8 | 5.5 |
| LTR32 A | 78 | | 80 | 103 | 63 | 52 | 8 | 25 | 17 | 17 | 12.5 | - | 89 | 54 | M6×10 | 6.6 |
| LTR40 A | 100 | -0.012 -0.034 | 100 | 130 | 79.5 | 64 | 10 | 33 | 20 | 20 | 16.5 | - | 113 | 68 | M6×10 | 9 |

LTR-A Series Specifications and Dimensions



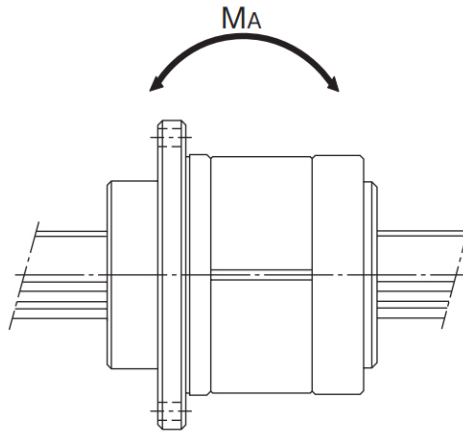
| Model NO. | Spline shaft diameter D0 h7 | Steel ball array | Basic rated torque | | Basic load rating | | Static allowable moment M(Notes) N·m | Support bearing Basic load rating | | Weight | |
|-----------|-----------------------------------|------------------|--------------------|------------|-------------------|----------|--|-----------------------------------|----------|------------------|----------------------|
| | | | C1 N·m | C0T N·m | C KN | C0 KN | | C kN | C0 kN | Spline nut kg | Spline shaft kg/m |
| LTR8 A | 8 | 4 | 1.96 | 2.94 | 1.47 | 2.55 | 5.9 | 0.69 | 0.24 | 0.08 | 0.4 |
| LTR10 A | 10 | 4 | 3.92 | 7.84 | 2.84 | 4.9 | 15.7 | 0.77 | 0.3 | 0.13 | 0.62 |
| LTR16 A | 16 | 6 | 31.4 | 34.3 | 7.06 | 12.6 | 67.6 | 6.7 | 6.4 | 0.35 | 1.6 |
| LTR20 A | 20 | 6 | 56.9 | 55.9 | 10.2 | 17.8 | 118 | 7.4 | 7.8 | 0.51 | 2.5 |
| LTR25 A | 25 | 6 | 105 | 103 | 15.2 | 25.8 | 210 | 9.7 | 10.6 | 0.79 | 3.9 |
| LTR32 A | 32 | 6 | 180 | 157 | 20.5 | 34 | 290 | 10.5 | 12.5 | 1.25 | 5.6 |
| LTR40 A | 40 | 6 | 419 | 377 | 37.8 | 60.5 | 687 | 16.5 | 20.7 | 2.51 | 9.9 |

LTR Series Specifications and Dimensions



| Model NO. | Female spline size | | | | | | | | | | | | |
|-----------|--------------------|-------------|-------------|-----------------------------------|----------------------|----|----------------|----|-----|------|--------|----------------|----------------------|
| | External diameter | | length L | Flange diameter D ₁ | D ₆ h7 | H | L ₁ | E | PCD | PCD1 | s × l | d ₁ | U ^(notes) |
| | D | tolerance | | | | | | | | | | | |
| LTR 16 | 52 | 0 -0.007 | 50 | 68 | 39.5 | 5 | 37 | 10 | 60 | 32 | M5×8 | 4.5 | 5 |
| LTR 20 | 56 | | 63 | 72 | 43.5 | 6 | 48 | 12 | 64 | 36 | M5×8 | 4.5 | 7 |
| LTR 25 | 62 | | 71 | 78 | 53 | 6 | 55 | 13 | 70 | 45 | M6×8 | 4.5 | 8 |
| LTR 32 | 80 | | 80 | 105 | 65.5 | 9 | 60 | 17 | 91 | 55 | M6×10 | 6.6 | 10 |
| LTR 40 | 100 | 0 -0.008 | 100 | 130 | 79.5 | 11 | 74 | 23 | 113 | 68 | M6×10 | 9 | 13 |
| LTR 50 | 120 | | 125 | 156 | 99.5 | 12 | 97 | 25 | 136 | 85 | M10×15 | 11 | 13 |
| LTR 60 | 134 | 0 -0.009 | 140 | 170 | 115 | 12 | 112 | 25 | 150 | 100 | M10×15 | 11 | 13 |

LTR Series Specifications and Dimensions



| Model NO. | Spline shaft diameter D_0 h7 | Steel ball array | Basic rated torque | | Basic load rating | | Static allowable moment | Support bearing Basic load rating | | Weight | |
|-----------|--------------------------------------|------------------|--------------------|-----------------|-------------------|-------------|-------------------------|-----------------------------------|-------------|------------------|----------------------|
| | | | C_T N·m | C_{0T} N·m | C kN | C_0 kN | $MA^{(notes)}$ N·m | C kN | C_0 kN | Spline nut kg | Spline shaft kg/m |
| LTR 16 | 16 | 6 | 31.4 | 34.3 | 7.06 | 12.6 | 67.6 | 12.7 | 11.8 | 0.51 | 1.6 |
| LTR 20 | 20 | 6 | 56.9 | 55.9 | 10.2 | 17.8 | 118 | 16.3 | 15.5 | 0.7 | 2.5 |
| LTR 25 | 25 | 6 | 105 | 103 | 15.2 | 25.8 | 210 | 17.6 | 18 | 0.93 | 3.9 |
| LTR 32 | 32 | 6 | 180 | 157 | 20.5 | 34 | 290 | 20.1 | 24 | 1.8 | 5.6 |
| LTR 40 | 40 | 6 | 419 | 377 | 37.8 | 60.5 | 687 | 37.2 | 42.5 | 3.9 | 9.9 |
| LTR 50 | 50 | 6 | 842 | 769 | 60.9 | 94.5 | 1340 | 41.7 | 54.1 | 6.7 | 15.5 |
| LTR 60 | 60 | 6 | 1220 | 1040 | 73.5 | 111.7 | 1600 | 53.1 | 68.4 | 8.8 | 22.3 |



Jingpeng Machinery & Equipment (Shanghai) Co.,Ltd

E-mail:sales@yosobearing.com

Mobile/Whatsapp:0086-13636560152

Address:18/F, Building 2, Ring Road Plaza, No. 515, Yishan Road,
Xuhui District, Shanghai