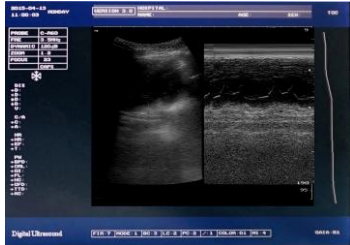





YJ-X30 Full Digital LED Portable Ultrasound



Main Machine	Laptop .
	10.4" LED Player.
	Backlight Key.
Main Parameter	Lithium battery.
	Display modes: B, B/B, 4B, B+M, M.
	Gray scale: 256 levels.
	Dynamic range: 0~120dB adjustable.
	External LED display have 16 kinds of pseudo color.
	Permanent storage: 128 images .
	Capacity cine loop: real time display 256 consecutive images which are memorized successively.
	Gain control: 8 segments TGC and overall gain can be adjusted respectively.
	Frequency conversion: 2.5MHz/3.0MHz/3.5MHz/4.0MHz/5.0MHz five periods of frequency conversion; frequency range applies 5.5 MHz/6.0 MHz/6.5 MHz/7.0 MHz/7.5MHz can match high frequency probe.
	Image multiplying factor:3.5MHz/R60 convex array probe: ×0.8, ×1.0, ×1.2, ×1.5, ×1.8, ×2.0 (six modes)×0.8, ×1.0 (display penetration depth).
Output Interface	E-zoom: magnify 2 times of real time image.
	Focus position: dynamic electron focusing.
	1 groups of USB video output 1 groups of SVGA video output may mate with SVGA color monitor.1 groups of PAL video output may mate with PAL monitor, video image recording instrument and image workshop, etc.
Optional Probe	USB Port: our machine can connect the common printer . Used to print the measurement report page.
	  
	Convex Linear Trans-vaginal