



YJ-P5KW/P8KW

Portable Digital Radiography System



Technical Parameters

Model	YJ-P5KW	YJ-8KW
Power Output	5kW	8kW
Current	10-100mA	10-125mA
Voltage	40-125kV	40-125KV
mAs	0.1-200mAs	0.1-400mAs
Exposure time	1-4000ms	1-6300ms
Focus Size	1.0/2.0	0.6/1.2
Detector Type	Wireless FPD	Wireless FPD
Vision Size	14*17"	14*17"
A/D Conversion	16 bits	16 bits
Spatial Resolution	3.4 lp/mm	3.4 lp/mm
Pixel Size	2304×2800	2304×2800

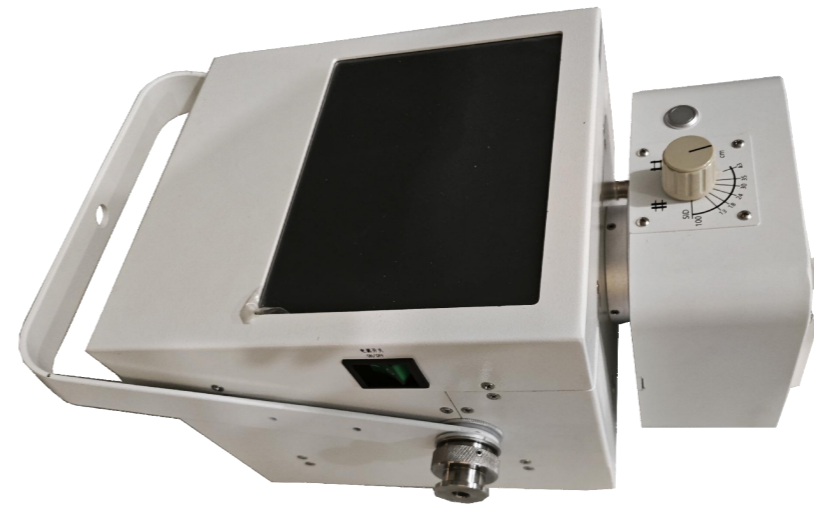
Easy positioning changes enable sequential exposures of the chest and abdomen to be acquired quickly and easily for efficient technologist workflow.

Four swiveling wheel casters allow precise, easy positioning and travel in any direction, and the ability to spin the system in place in tight spaces.

The articulating control panel allows rotation and height adjustment for instant image confirmation from any angle.

The small lightweight design and extended reach of the tube head allows one-hand operation for easy exam positioning.

- Wireless Transmission
- Easy Exposure interface
- Hand switch and visual console
- Fast work flow
- Direct deposition CsI for better image quality with lower dose
- 16 bit ADC for more image details
- High-frequency inverter technology
- Automatic measurement of shooting distance and thickness

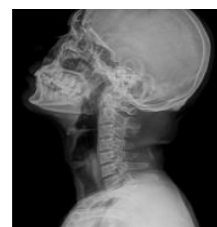


X-ray detector(Flat Panel Detector)

Type:Amorphous Silicon
 Scintillator:Cesium Iodide
 Active Area:14x17Inch
 Pixel Matrix:2304 × 2800
 Pixel Pitch:150um
 A/D Conversion:16bits
 DQE: ≥ 70%
 Spatial Resolution:34Lp/cm
 Acquisition time:≤2S
 Ingress Protection:IPX1



Gallery



C-spine



Chest



L-spine



Pelvis



Hands



Foot



Knee joint



L-spine



Chest

Mobile Digital Radiography System



Equipped with a high frequency 5 kW or 8 kW generator (125 kV, 200 mA, 400 mAs) provides high image quality in any situation.

An integrated computer enables instantaneous image display, immediate image processing, local and USB device storage, networked archiving and printing.

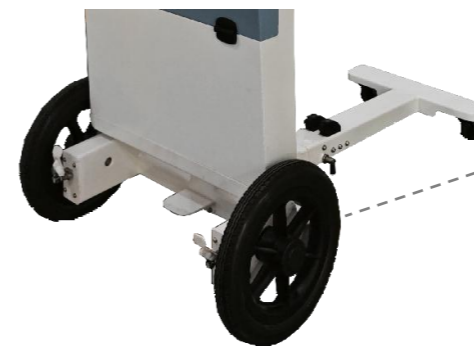
Easy to use, the intuitive user interface allows programming of almost unlimited anatomical protocols. High-quality preview images are displayed instantaneous prior to transmission using the industry standard DICOM interface.

Advanced communication features have been added reducing the time required to share clinical information.

- USB devices
- CD/DVD Burner
- Ethernet cable
- Wif



The dual side hand grips facilitate the tube positioning for efficient access to bedside and polytrauma patients.



Its large wheels make **P Series** fully dedicated to outdoor situations. operation fields, ER situations and sport events.

Functions

- Image acquisition function
- Automatically obtain patient information from the hospital's HIS system or RIS system or establish local medical records.
- Setting of exposure parameters: setting of kV, mA, mAs and ms.
- Image processing function
- Automatic window width and window level adjustment, ROI window width and window level adjustment, gray scale transformation, and parallel display of single or multiple images
- Image zooming function: most suitable for image, zoom in, zoom out, local zoom in and actual size
- Image rollover: left and right rollover, up and down rollover, 90° rollover
- Image filtering: noise reduction, bone level, tissue details, contrast, etc.
- Marking function: text marking, arrow and other marking and deletion
- Image measurement: linear measurement, Angle measurement and rectangle measurement
- Image adjustment: window level gain, window width gain, grayscale stretch, negative reversal, sharpening, enhancement strength, etc.
- Other functions: image movement, label selection, image clipping and other functions.
- Image management function
- DICOM function and database management: the system supports the standard DICOM3.0 function, which can transfer data to other medical imaging workstations.
- Case management function
- Medical records can be stored, retrieved and inquired, and cases can be deleted, cleaned and browsed.
- Function of printing diagnostic report: the function of printing diagnostic report is added. The built-in diagnostic report template and knowledge base of the system can output integrated report of text and text.

