



Forever Medical

## Trolley 4D Color Doppler Ultrasound Scanner

### YJ-TS80



New Generation Intelligent Internet Color Ultrasound

Whatsapp/TEL.: 0086-18638789724

Web: [www.forearmedchina.com](http://www.forearmedchina.com) [www.forevermedical-yj.com](http://www.forevermedical-yj.com)



Forever Medical

YJ-TS80 is a full-body high-end four-dimensional color ultrasound, widely used in abdomen, obstetrics, small vascular organs, limbs and heart and other clinical diagnosis. The instrument boldly adopts the most popular classic black and white color system in the world, the full mold production of precision, and the dual screen and dual system operating platform can easily achieve telemedicine and online operation guidance. Truly achieve high appearance level, high configuration, high added value!



### **Innovative 3D/4D Solution (3D/4D Solution)**

Using superior Doppler ultrasound imaging and processing technology, as well as advanced 3D/4D imaging technology, 360° all-round stereo rotation observation, easy to achieve real-time three-dimensional imaging.



### **Dual Screen Dual System Telemedicine**

It adopts dual screen and dual system configuration, with dual engine platform of ultrasonic imaging system and Internet workstation system, and realizes image and video transmission, expert remote guidance, real-time online training and other telemedicine through Wifi connection and Internet software of the instrument.

YJ-TS80 = 4D color ultrasound + workstation + telemedicine/online guidance



### **Configuration:**

Four dimensional color super host  
15 "HD Color Super main screen (optional 19")  
10.4 inch LED workstation auxiliary screen  
Three-probe jack (optional with 4 ports)



128 element variable frequency probe  
4D image burning device  
Main display cardan rotation system  
USB:6, DICOM: 2

Whatsapp/TEL.: 0086-18638789724

Web: [www.foremedchina.com](http://www.foremedchina.com) [www.forevermedical-yj.com](http://www.forevermedical-yj.com)



Forever Medical

## Technical Features:

3D/4D imaging technology  
Probe automatic recognition intelligent monitoring  
Digital continuous beamforming  
Backlit keyboard, convenient operation process

Comes with Wifi connection and Internet telemedicine  
Professional color ultrasound workstation operating software  
Support beautiful graphic report printing  
Powerful measurement software package



Linear array probe



Convex array probe



Microconvex probe



Phased array probe

Whatsapp/TEL.: 0086-18638789724

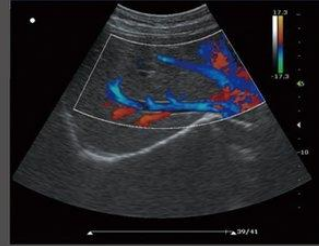
Web: [www.foremedchina.com](http://www.foremedchina.com) [www.forevermedical-yj.com](http://www.forevermedical-yj.com)



Forever Medical



Carotid blood flow



Liver blood flow



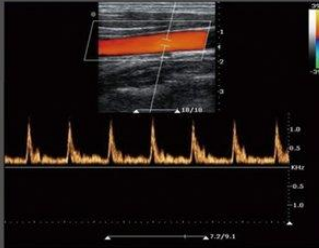
Liver



Blood flow



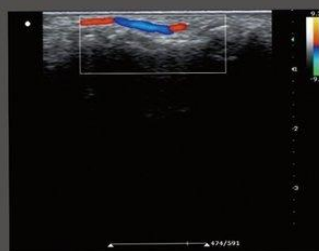
Neck



Carotid spectrum



Renal blood flow



Fingertip blood flow

Whatsapp/TEL.: 0086-18638789724

Web: [www.forearmedchina.com](http://www.forearmedchina.com)

[www.forevermedical-yj.com](http://www.forevermedical-yj.com)