



## YJ-HDR530 Dental X Ray Sensor

Focus on Oral Health



HENAN FOREVER MEDICAL CO.,LTD.  
Room 806, Floor 8, Wanda Center, Jinshui District, Zhengzhou, Henan  
Province, China  
Tel: 86-371-61315851  
Email: hailey@yjcompany.com Whatsapp/TEL.: 0086-15637181685  
Web: www.forevermedchina.com www.forevermedical-yj.com



### Physical image



YJ-HDR530



YJ-HDR550

### Introduction

The signal receiving surface of Confident Eco Plus is the front (as shown in the figure below).



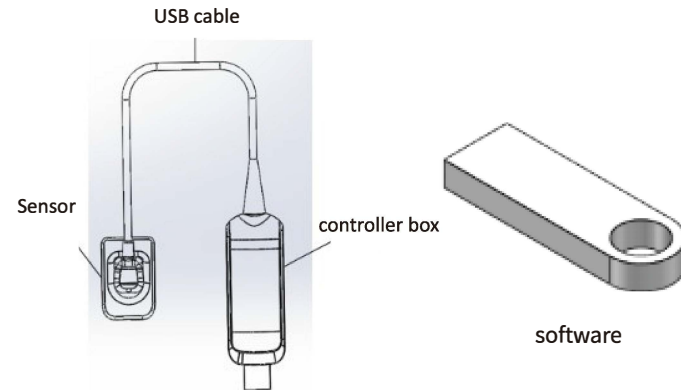
### Production Description

Dental imaging System sensor consists of sensors, controller box, USB cables, and software.

The product is connected to the controller box through a highly flexible cable. The controller box provides timing, image acquisition and transmission, and is connected to a PC or laptop through a USB interface. The power of the controller box and the sensor is provided by the USB interface, no battery or charging system is required. Need to be used in conjunction with supporting software.

### Overview

Schematic diagram of appearance and function



## Technical Specification

Model	YJ-HDR530	YJ-HDR550
Sensor	APS CMOS	APS CMOS
External Dimension(mm)	25.4×36.8×4.5	30.4×41.9×4.5
Sensor Active Area (mm)	20×30	26×36
Pixel	1000×1500	1300×1800
Grey Value	16Bit/0~65536	16Bit/0~65536
Power	5.0V	5.0V
Interface	USB2.0	USB2.0

## Environment Requirement

### Using Environment

Environment Temperature: 10°C~40°C  
 Environment Relative Humidity: 30%~75%  
 Atmosphere Pressure:700hPa~1060hPa

### Transportation & Stock Environment

Environment Temperature: -20°C~+55°C  
 Environment Relative Humidity: 10%~93%  
 Atmosphere Pressure:860hPa~1060hPa

### Product Configuration

Packing list	
1.Dental Imaging System	1set
2.USB disk flash	1pcs
3.dongle	1pcs
4.User Manual	1pcs

## Exposure Time

As with conventional radiological devices, the exposure time depends on the type of generator, the shape of the patient, and the tooth being irradiated. The exposure times given below are recommended. Using experience in your practice to set specific configurations will become clearer over time

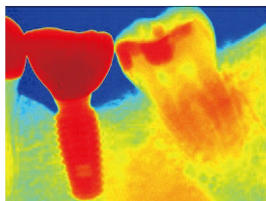
Tooth Number	mmended Exposure Time (s)
Upper Incisor/Canine	0.18
Upper Premolar	0.24
Upper Molar	0.40
Lower Incisor/Canine	0.12
Lower Premolar	0.18
Lower Molar	0.24



Images:



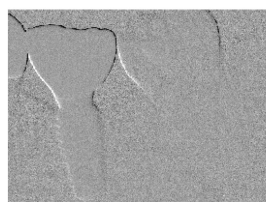
Original



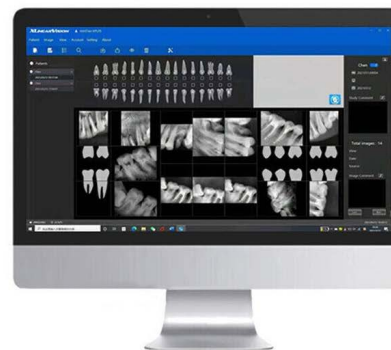
着色效果



原图片



浮雕效果



**Use with Dental X-rays**

Dental X Ray Models: YJ-DXP01/YJ-DXP02/YJ-DXP06/YJ-DXP28/YJ-DXP30/YJ-DXP54/YJ-DXP111/YJ-X12,etc.

**Portable Dental X Ray Machine:**

