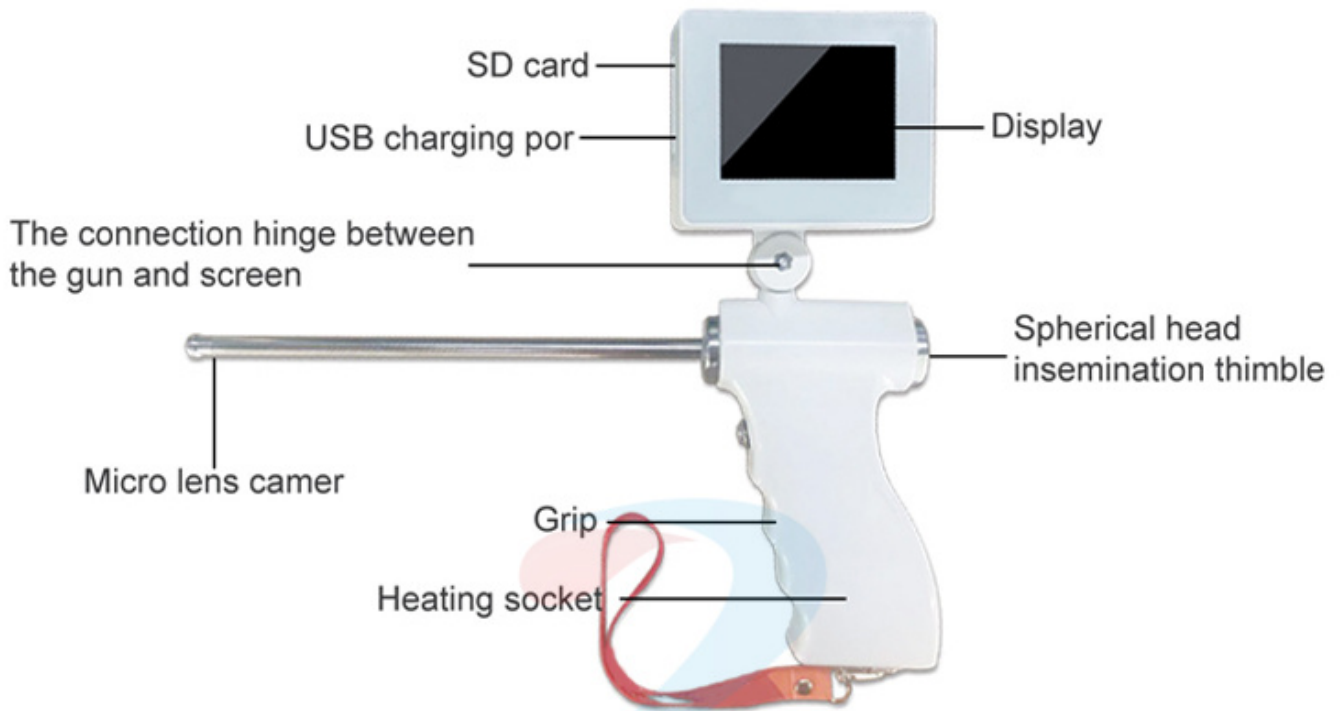


Visual insemination gun for dogs



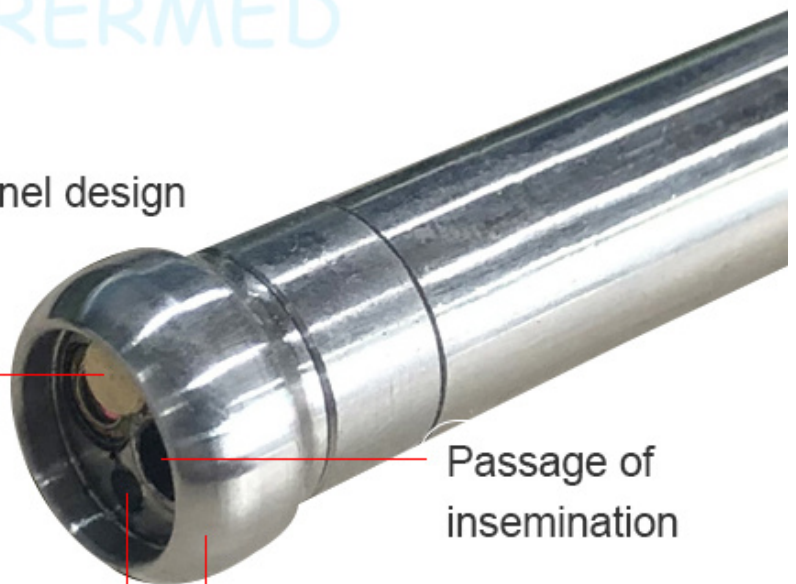
Product introduction



The handle switch
Control
built - in air pump

Air channel design

High-definition pixel camera

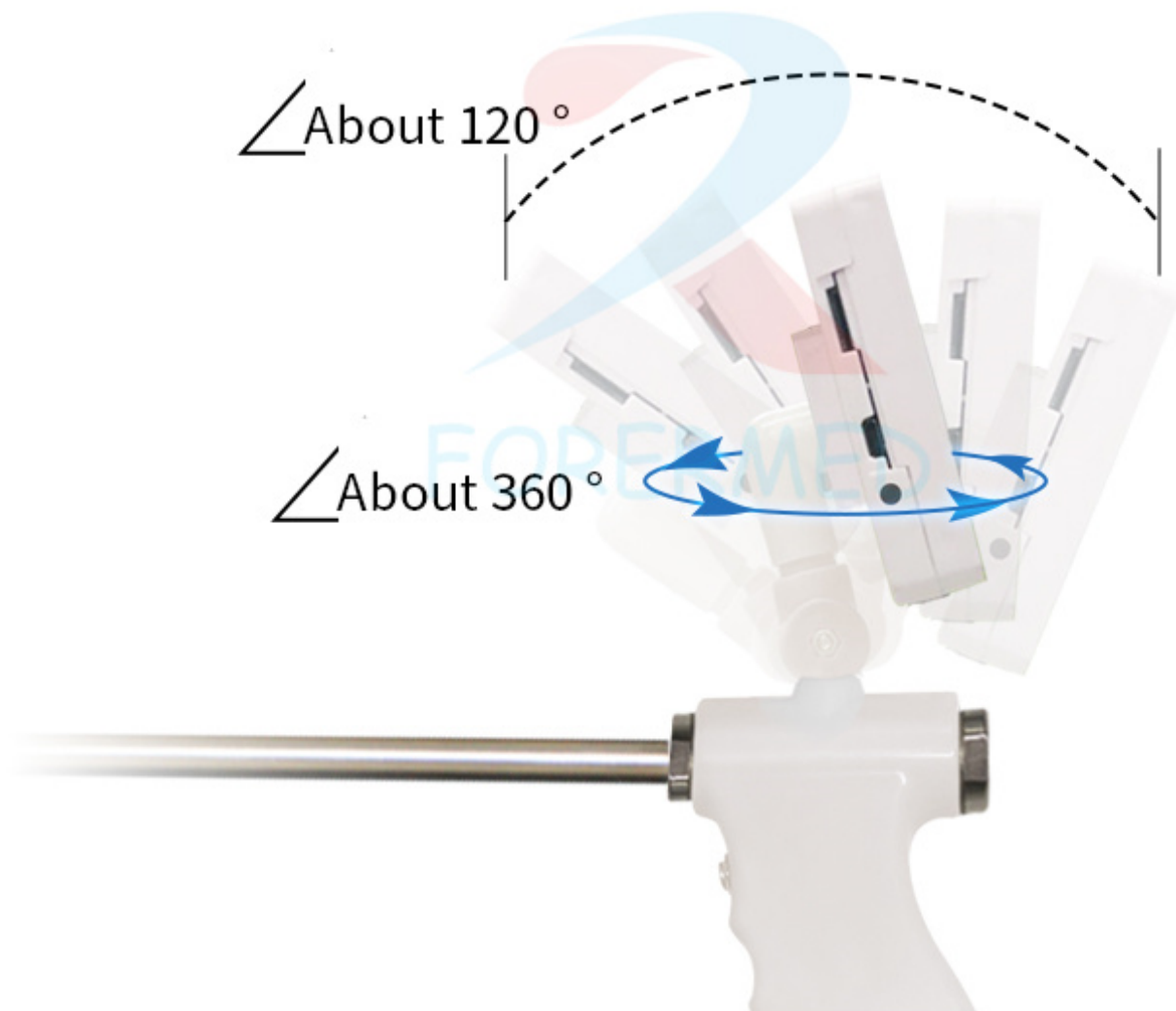


Passage of
insemination

Carefully polished sleek
lens hood Metal Lens Hood

Product features

Display can be rotated easily watch the insemination process, discuss teaching more convenient.

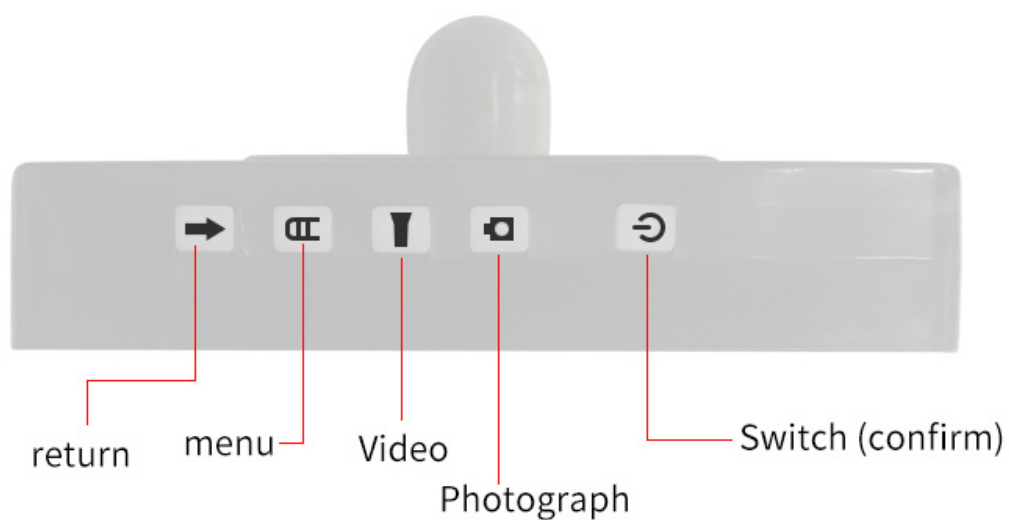


Break through the traditional use of the product does not exceed three hours barriers, our products longer standby time, continuous operation no worries.

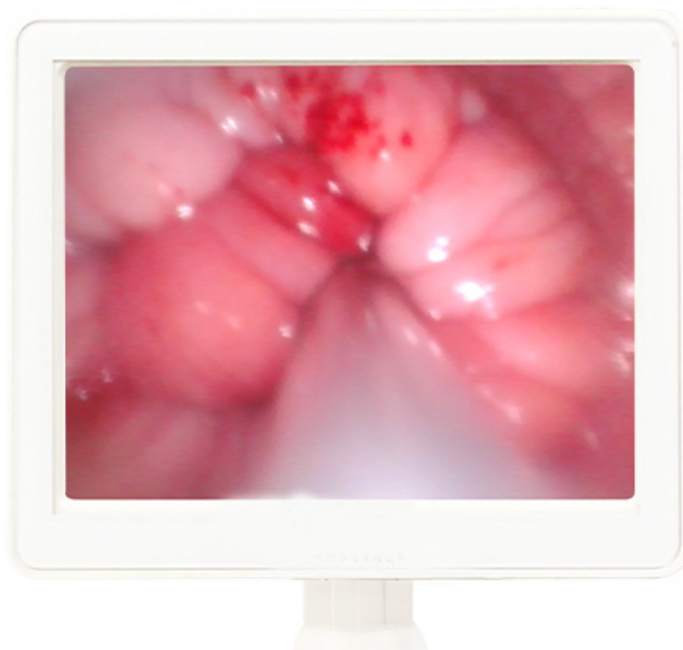
**Continuous standby
24 hours**



Video, photo, playback, image amplification, image output print, clearly record each instant.



Ultra HD screen, the display can be compatible with strong light, dark, cold, dry, damp heat and other working environment.



Product configuration



suitcase



Metal expansion head



46cm Dog vas deferens*20





50cm Positioning steel needle*4



Metal needle insemination*1

Standard model: length 48cm Long section: length 49cm



Standard	Lengthened
	
Total length: 340mm	Total length: 410mm
Probe length: 250mm	Probe length: 320mm
Probe material: 304 stainless steel	Probe material: 304 stainless steel
Probe diameter: 10mm	Probe diameter: 10mm
Handle width: 80mm	Handle width: 80mm
Expansion head diameter: 12 mm	Expansion head diameter: 12 mm
Expansion head length: 7 mm	Expansion head length: 7 mm
Air passage diameter: 1 mm	Air passage diameter: 1 mm
Insemination channel diameter:	Insemination channel diameter:
3 mm	3 mm
Screen size: 3.5 inch	Screen size: 3.5 inch
Resolution: 640x480	Resolution: 640x480
Display adjustment angle	Display adjustment angle
Up and down 120 °, left and right 360 °	Up and down 120 °, left and right 360 °
Camera: 3.9mm cold light source,	Camera: 3.9mm cold light source,
180 ° wide angle	180 ° wide angle
Pixel: 15 million	Pixel: 15 million
Power: 5V 2000MA (rechargeable, disassembly, replacement)	Power: 5V 2000MA (rechargeable, disassembly, replacement)

Operation method

- 1** Wipe the probe of the visualy gun with the alcohol cotton ball, and the front-end expansion head is installed, and the positioning steel needle is inserted into the insemination needle.
- 2** Place the dog upside down or half upside down, and insert the probe rod of the visual semen insemination gun into the reproductive tract of the dog until it does not move.
- 3** Slowly back up the infusion gun, if the screen is blurred, you can press the pneumatic button on the handle. Blow off the cover in front of the camera.
- 4** To see the position of the uterine orifice, insert the injection needle from the back end of the visual infusion gun , observe the changes of the display, you can fine tune the direction, so that the injection needle from the uterine orifice into the crease, about 4CM.
- 5** Remove the positioning steel needle, connect the insemination needle with the syringe containing semen, and inseminate slowly. Push the semen inside the final insemination needle with gas not higher than 1.5ML.
- 6** Pull out the insemination needle, pull out the visual insemination gun, keep the dog upside down, complete the insemination.

PRODUCT CONFIGURATION



suitcase



Metal expansion head



46cm Dog vas deferens*20



50cm Positioning steel needle*4



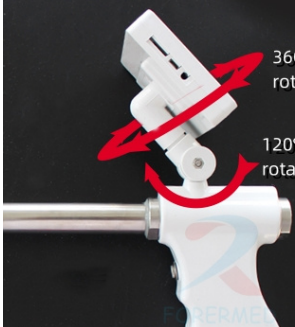
Metal needle insemination*1

Standard model: length 48cm

Details Features



Quality Products



360°
rotation horizontally

120°
rotation vertically


Freedom of Screen Rotation

Flexibly rotate and conveniently observe, suitable for various extreme environments.



Specialized Insemination Needle

Curved front-end design, gentle on cows. Customizable sizes for easier passage through the cervix.



Multi-functional Screen

Supports video recording, photo capturing, playback, image zooming, and output.



Detachable Battery

Battery lifespan of up to 500 charging cycles. Easily replaceable by yourself.



Anti-slip Granular Handle

Designed with anti-slip silicone particles to prevent slipping and dropping from your hand.

Packing parameters

