

# Visual Artificial Insemination Gun for Cow

Easy to operate, no experience required

No need to go through the rectum, no stool contact, much cleaner

Full Visibility

Improve Pregnancy Rate



Alibaba.com



Made-in-China

**High-definition image**

**Easy transfusion**

**Significantly improve pregnancy rate**



The seminal probe can be heated at constant temperature.  
Prevent the cold of the probe from causing the cow to spasm.



Constant  
Temperature



Stainless Steel  
Material



Smooth end



**Circular arc probe,  
more secure**

**Stainless steel probe rod,  
more corrosion resistant**

Side-blowing channel design, does not block the camera.



# PRODUCT HIGHLIGHTS



## 45° Beveled Screen

The screen is displayed with an upward tilt of 45° to facilitate the observation of the screen by the transfusion personnel.

## Multifunction Screen

Supports video recording, photography, video playback image magnification.



## Special Injection Needle

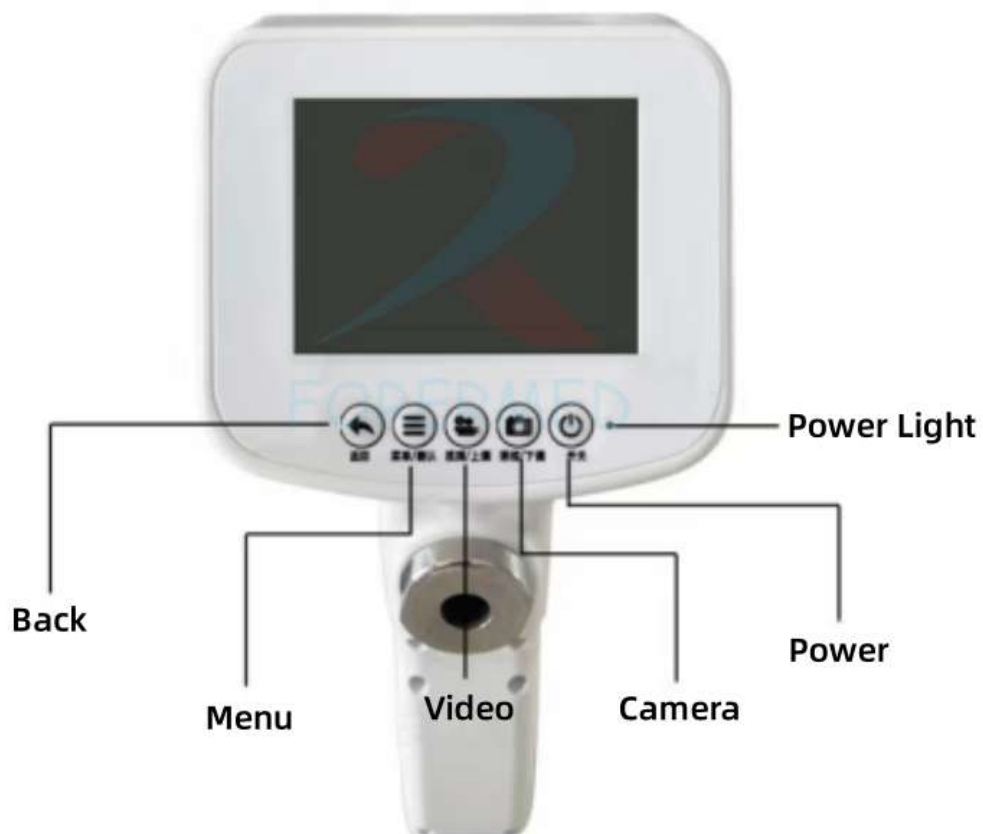
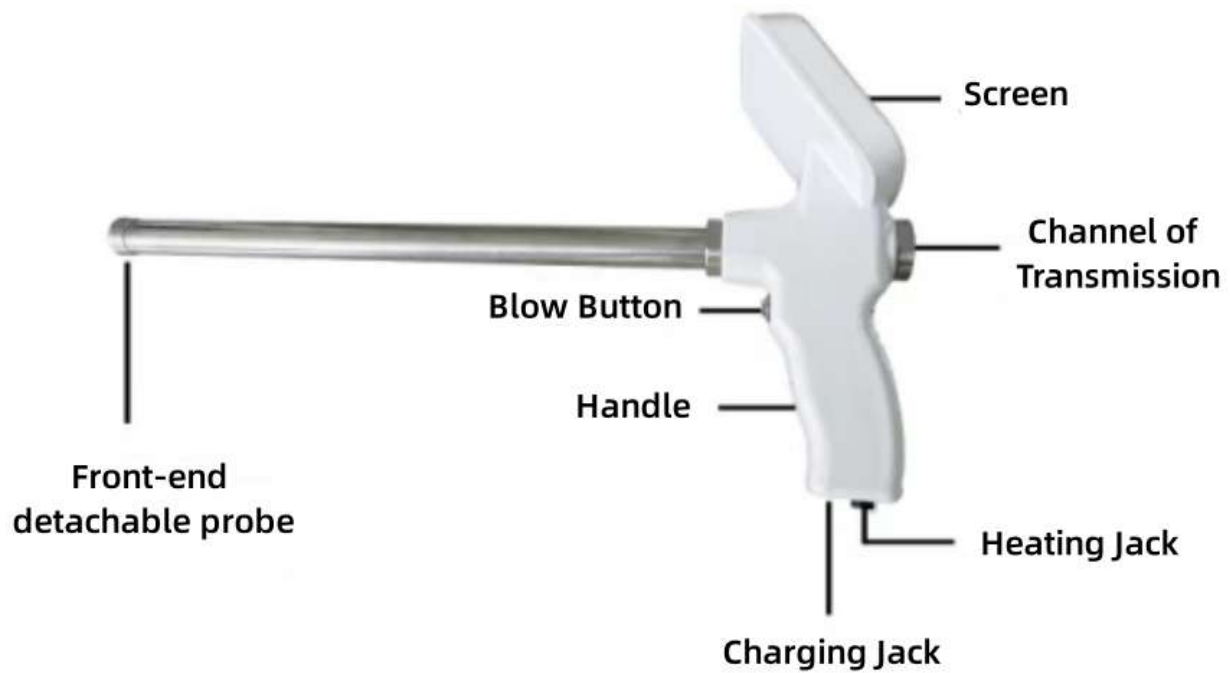
Custom size, easier to penetrate the uterine opening. The front end is smooth and polished. It won't hurt the cow.

## Detachable Arc Probe

Stainless steel is more durable. Circular grinding, does not hurt the animal uterus.



# Products Details



Power button: Short press to power on and long press for 3 seconds to power off.

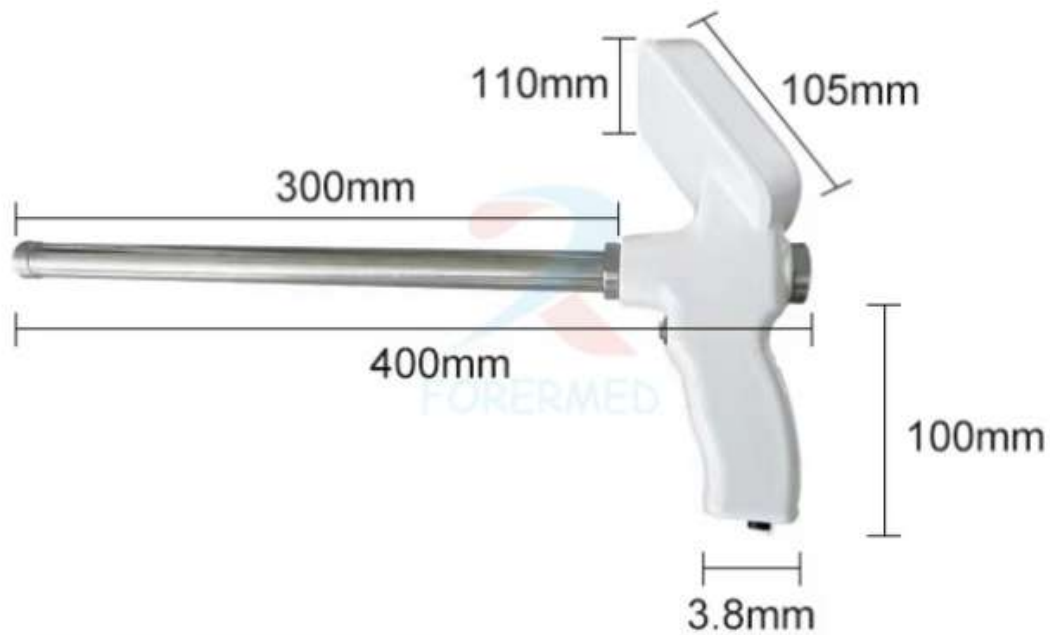
Video key: Press [Video key] to start recording after startup, press again to stop recording, and the recording is automatically saved.

Photo key: Press the "Photo" key to automatically take a picture and store it.

Menu key: including recording, taking photos, playing back, deleting and setting.

Back key: Return to the previous screen

# Products Parameter



# Products Configuration



Visual Sperm Gun



Charging Plug



Charging Cable



Heating Cable

25 outer casing (length: 650mm)

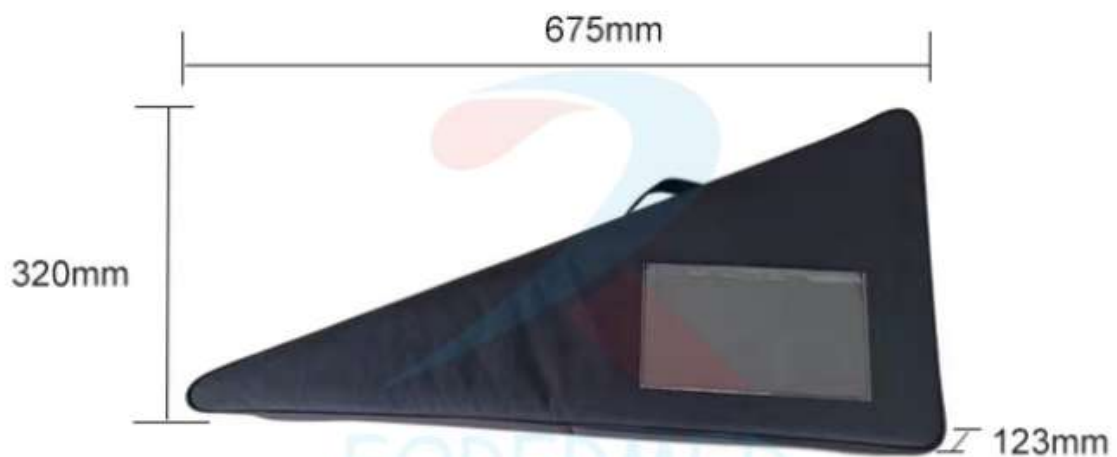
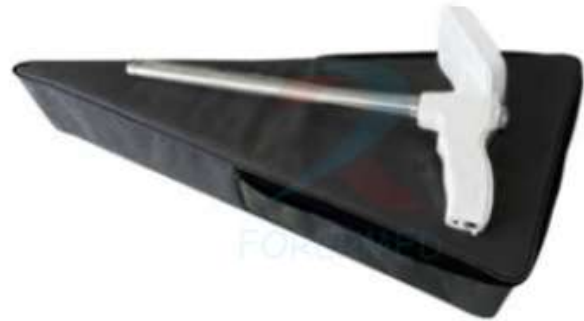


1 sperm injection needle (Length: 650mm)

# Package Display

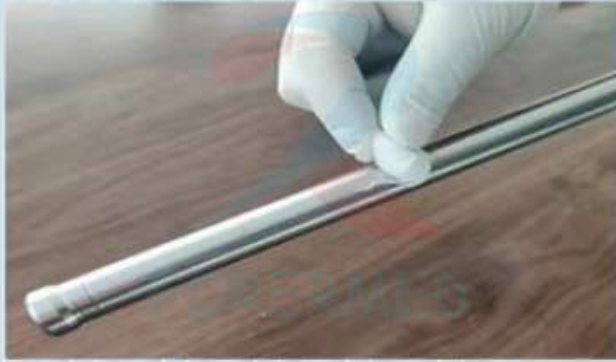
## Portable Bag

Portable cloth bag,  
machine protection,  
easy to carry.





# Operation



1. Wipe the visual gun rod with an alcohol swab and clean the cow's vulva.



2. The thawed fine tube is placed into the transfusion needle in the traditional way, and the outer tube is then placed into the lock.



3. Hold the cow, insert the visual sperm gun diagonally upward into the vagina, about 5-10cm, and then change to horizontal and continue to insert until there is resistance.



4. Watch the screen to make sure the front end has reached the cervix. If you can't see the camera clearly, press the blow button on the front of the handle to blow away the slime or impurities.



5. After reaching the opening of the cervix, insert the sperm gun into the uterus about 10cm from the middle, reach the bottom of the uterus, and slowly push the semen gun to inject semen.

# Product Photos

