

YJ-7200Plus

Automatic Hematology System



Technical Specification

Parameter

37 blood report parameters: WBC, NEU%, LYM%, MON%, EOS%, BAS%, NEU#, LYM#, MON#,EOS#, BAS#, IG#, IG%, RBC, HGB, MCV, HCT, MCH, MCHC, RDW-SD, RDW-CV, NRBC%, NRBC#, PLT, MPV, PCT, PDW, P-LCR, P-LCC, RET%,RET#, IRF, LFR, MFR, HFR, RHE, IPF

7 body fluid report parameters: WBC-BF, TC-BF#, MN#, MN%, PMN#, PMN%, RBC-BF

Test Principle

Cyanide-free colorimetry for HGB test

Sheath impedance method for RBC and PLT test

Semiconductor laser flow cytometry for WBC, RBC, NRBC test

Throughput

CBC+DIFF: 120 samples / hour

CBC+DIFF+RET: 83 samples / hour

BF: 40 samples / hour

Data Storage Capacity

At least 500, 000 results

Data System

RJ45 network interface, USB interface, can be connected to LIS/HIS

Dimension (D×W×H)

835mm×620mm×770mm

Weight

86kg



YJ-7200Plus

Automatic Hematology System



FORERMED

HENAN FOREVER MEDICAL CO.,LTD.

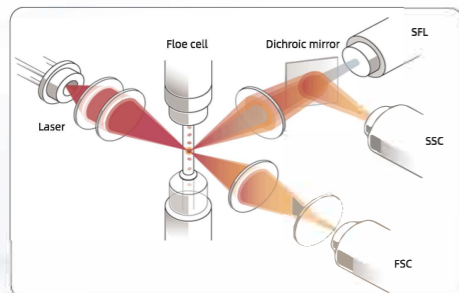
Room 806, Floor 8, Wanda Center, Jinshui District, Zhengzhou, Henan, China
E-mail:hailey@yjcompany.com Http://www.foremedchina.com
Tel:+86 15637181685



FORERMED

Advanced Platform

- Nucleic acid fluorescence staining integrated with semiconductor laser flow cytometry



Side fluorescent light (SFL)

- Nucleic acid content of cells

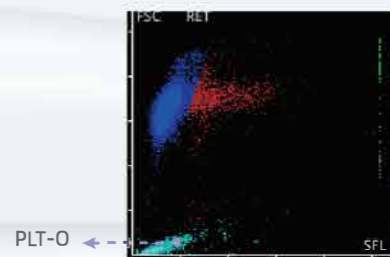
Side scatter (SSC)

- Internal cell structure

Forward scatter (FSC)

- Cell volume information

The advanced platform realizes the analysis of the RET channel scatter plot and the high, medium and low fluorescence intensity of the region through the permeation of fluorescence dye into the cell and nucleic acid material binding, to obtained 7 RET parameters (RET%,RET#, IRF, LFR, MFR, HFR, RHE).



Once the deviation of PLT-O in the RET channel and the PLT measured by the sheath impedance method is found to be too large, the software will give a prompt alarm, which can effectively reduce the interference caused by platelet agglutination, large platelet, cell debris and other factors on the PLT count.

Multiple Test Modes

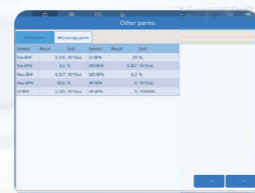
- 5 sample analysis modes and 5 test modes can be chosen freely



Analysis mode: Automatic whole blood mode, Whole blood mode, Pre-dilute mode, Micro-WB mode, Body Fluid mode

Detection mode: CBC, CBC+DIFF, RET, CBC+DIFF+RET, CBC+RET

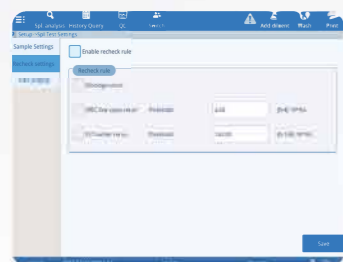
- Body fluid mode



Supporting body fluid test by providing 7 reportable parameters (WBC-BF, TC-BF#, MN#, MN%, PMN#, PMN%, RBC-BF)

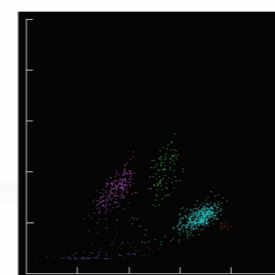
New Breakthrough

- Automatic recheck function

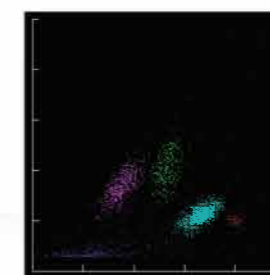


When the automatic recheck function is enabled, the sample will be automatically rechecked when the PLT and WBC count values are lower than the set threshold to reduce the microscopy rate.

- Low value WBC detection function



Whole blood mode



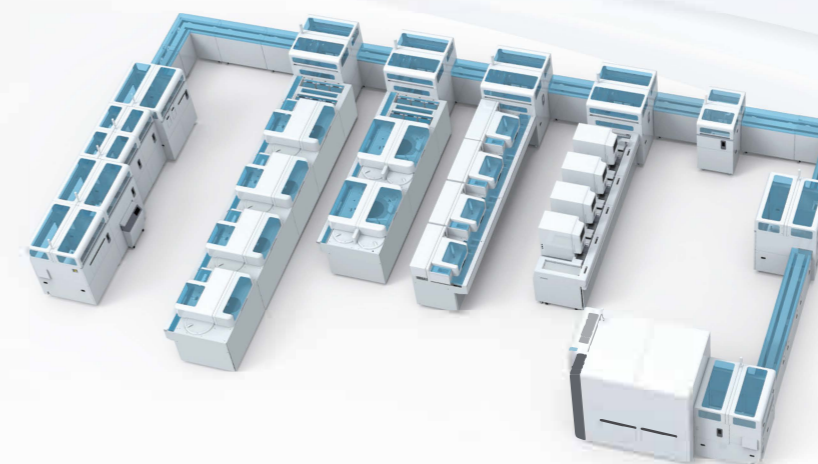
Low-WBC mode

In case of low WBC value, it will automatically triple the number of particles to ensure the accuracy of low white blood cell count.

Flexible Combination



- Free combination of 1-4 modules, measuring speed can be up to 480 test/hour, meeting the requirements of large and medium-sized laboratories for large volume testing.
- Supporting pre-storage and collecting tray, expanding sample positions up to 520, improving test efficiency of batch test.



Connecting to LA-60 Sample Processing System, the YJ-7200Plus can offer more intelligent analysis.