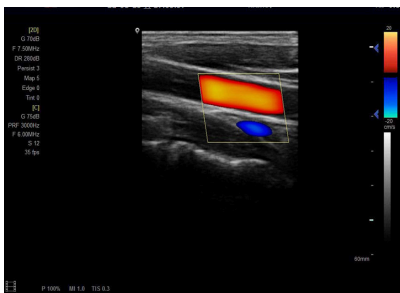
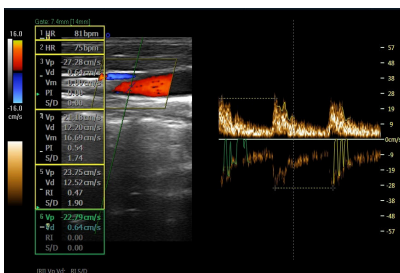
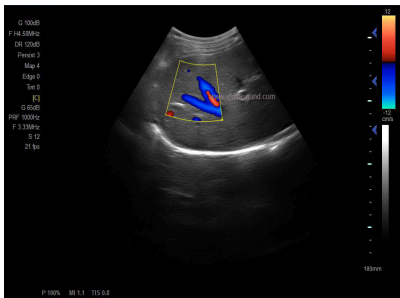
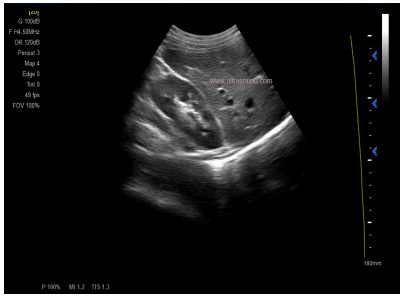




## YJ-X3800 Full Digital Color Doppler System



### Main Parameter

- 15" LED Player.
- Scanning mode: Convex, Trans-vaginal, high-frequency linear array, Micro-convex.
- Modes: B.B/B.M.CFM.CFM/B.PDI.PDI/B.PW.
- Big capacity lithium battery.
- B/D dual-purpose: linear array: B/PWD; convex array: B/PWD;
- Support the five languages.
- Gray scale: 256 levels.
- Depth display:  $\geq 250\text{mm}$ ;
- Dynamic range: 80~280dB adjustable.
- IMT and PW automatic measurement function.
- Self-motion optimize function.
- Image multiplying factor.
- Image mode: digital beam forming, tissue harmonic imaging.
- picture in picture zoom in and zoom part function.
- Image storage, video storage, cine loop, SSD capacity  $\geq 160\text{G}$ ;
- Frequency conversion: 2MHz-12MHz(Depending on the probe)
- 16 kinds of pseudo color encoding can optional.
- E-zoom: magnify 2 times of real time image.
- Focus position: dynamic electron focusing.

### Application Mode

Abdomen, gynecology, obstetrics, superficial organ, urologist, heart and user defined model 1-4, total ten models;

### Output Interface

USB\Video\HDMI\VG\DICOME\LAN\FOOT SW port.  
 USB used to connect USB devices; Video output, connecting video printer or monitor; DICOME transfer the images; LAN to connect the network cable;

### Optional Probe



Convex

Linear

Trans-vaginal

Micro-convex