



## **U-arm Medical Digital X-ray System**

### **Flexible and Simple Operate**



### **Excellent Performance in Multiple Scenarios**

- Well- knit structure, less space occupation
- Fast screening for physical examination



### Technical Parameters

Model	INU-32kW	INU-50kW	INU-65kW	INU-80kW
Power Output	32kW	50kW	65kW	80kW
Current	10-400mA	10-630mA	10-800mA	10-1000mA
Voltage	40kV-150kV	40kV-150kV	40kV-150kV	40kV-150kV
mAs	0.1-400mAs	0.1-630mAs	0.1-800mAs	0.1-1000mAs
Exposure time	1-6300ms	1-6300ms	1-6300ms	1-6300ms
Focus Size	1.0/2.0	0.6/1.2	0.6/1.2	0.6/1.2
Detector Type	Flat Panel Detector			
Vision Size	17*17"			
A/D Conversion	16 bits			
Spatial Resolution	3.6 lp/mm			
Pixel Size	3072X3072			





### **Excellent Performance in Multiple Scenarios**

- Well- knitstructure, less space occupation
- Fast screening for physical examination

### **Flexible in Different Positions**

- One- key positioning
- Minimal C-arm design with large angle rotation
- Easy to satisfy multi - positional imaging requirements:up right, supine, lateral, axia land many other special positions

### **Powerful Image Chain Strong Adaptability**

- UHF high- voltage generator ensures the X- ray stability and performance .
- High heat capacity tube ensures continuous exposure for high patient volume.
- Large size of amorphous silicon FPD ensures high- efficiency diagnosis .
- Powerful specialized software enhances visual experience for every image, while reducing radiographic dose.

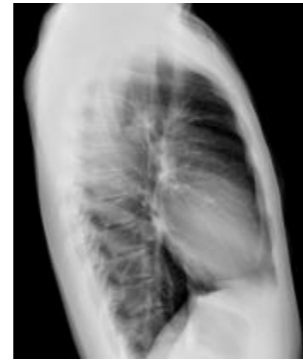




C-spine



Chest



Chest



Pelvis



Hands



Foot



L-spine



L-spine



Knee joint

## Intelligent Algorithm for High Resolution Image

- Image processing: Image enhancement, balance, noise reduction
- Image gray scale can be adjusted automatically or manually.
- Specific screening program for pneumoconiosis

