

YJ-M8 Full Digital Color Doppler Ultrasound System



Detailed introduction:

The full-digital color doppler ultrasound diagnostic apparatus is a new generation of portable color ultrasound diagnostic apparatus newly developed by our company, which brings more humanized manipulation experience to ultrasound doctors. The software and hardware configuration of the whole body application can better meet the clinical needs of different users.

1. Advanced imaging technology

Full digital beamforming technology
Full-time real-time continuous dynamic focusing
Real-time dynamic path
Real-time dynamic apodization
Speckle noise reduction technology
Panoramic imaging

2. Comfortable work flow

Personalized custom function
Chinese and English operation interface
Various professional application probes
One-click optimization

Personalized custom function

Customize the inspection mode, image parameters and key functions according to the doctor's usage habits and requirements, making the operation more personalized

iTouch: One-click optimization

Allow the doctor to adjust the softness of the black and white image according to the actual needs in one touch, so that the image performance is more clear

THI (tissue harmonic imaging technology)

Using harmonic signal imaging in tissue echo to reduce the overlapping structure caused by reflection to improve spatial resolution and contrast resolution, thereby obtaining high-definition images

Rich and professional Chinese report page

The professional obstetric report page contains a comparison table of fetal growth curves, pre-birth period measurement data, and personalized diagnostic template can be added.

Chinese and English operation interface, Chinese navigation operating system

Prompt operation steps in real time to help doctors quickly grasp equipment operation and function usage

Built-in workstation

The machine has a powerful PC system inside, doctors can write reports directly in the system, and it can connect various printers

Various professional application probes

It can be connected with professional diagnostic probes such as abdomen probe, high frequency probe, cavity probe and heart probe

Powerful data management system

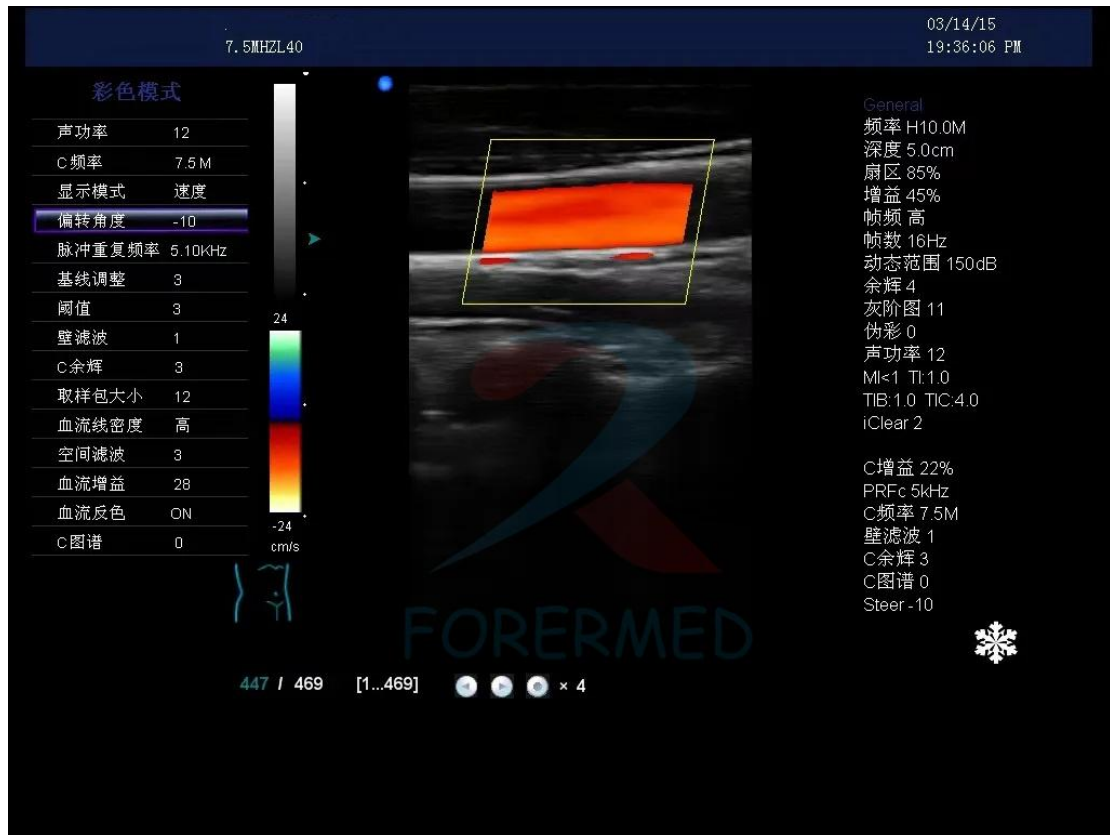
Large-capacity hard disk, equipped with RS232, USB interface, parallel printing interface, DICOM3.0, network interface, easy to achieve image and remote communication





Forever Medical

forearmedchina.com



Optional Probes:

