



**3DS 2.0**



*Perfect your Clinic!*



**Now Immediately**

starting with 3DS 2.0 generation



# New Upgraded 3DS 2.0

Digital Implant / Orthodontics / Restoration  
Make it easier for dental treatment



Fast



New AI



Small



Simply  
Operation



Personalized  
Design



Scan  
Freely

## Our Strength

Our intraoral scanner has fast and easy image capturing technology, which can provide reliable, accurate & complete data for digital dental impression. Providing patients with a comfortable and efficient treatment experience, our scanners make it easier for dentists to diagnose and communicate with patients. Our scanner is an open system scanner, which provides the access to the latest technology equipment available in the market. It has a range of applications which includes digital restoration, digital orthodontics, navigation template of digital implant, etc.



### **01 Fast Impression Taken**

Fast scanning, linear scanning speed up to 80mm/s;  
Full arch scanning speed up to 90s.

### **02 Humanized Scanner Tip Design**

New smaller scanner tip, with internal heating system to keep constant temperature inside the patient mouth during scanning. The mirror angle of the scanning tip is close to 45 degrees, which can take into account the mesial and distal areas at the same time.

### **03 Screw Type Cable Connection**

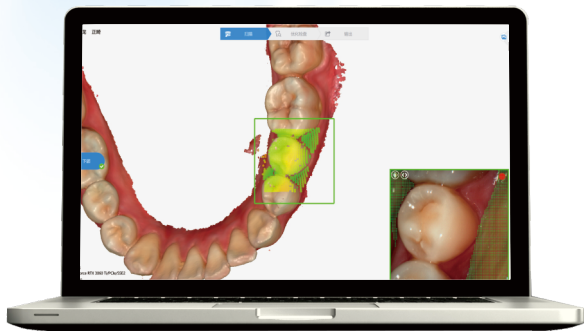
New screw type cable connection ensures a better connection between the cable and the handpiece.

### **04 Fashion and Light Handpiece Design**

The overall appearance of the handpiece is with streamline design, the net weight of the handpiece is 210g, and the hand-held design makes the operation much more convenient and simpler.



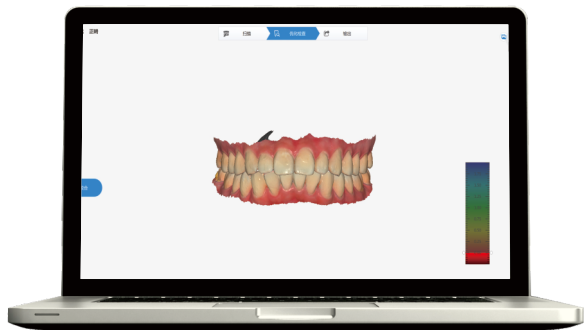




AI Scan

## 05 New AI Scanning Function

New AI function will remove extra softer tissues in real time, ensuring the smoother scanning operation and cleaner scanned results. It can be applied to edentulous jaw optimization, caries detection and automatic labeling, etc.



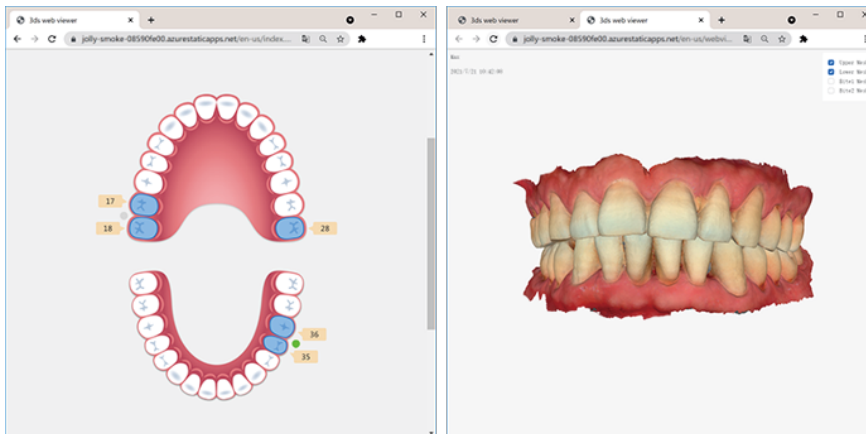
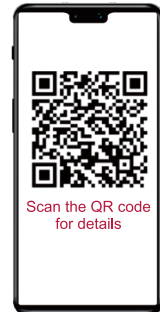
3D Real Color

## 06 3D Real Color

The surface texture and contrast of the scanned model are stronger; the color distinction between teeth and soft tissues in the data is more obvious; the edges are clearer, which is helpful for doctors and technicians to do further processing.

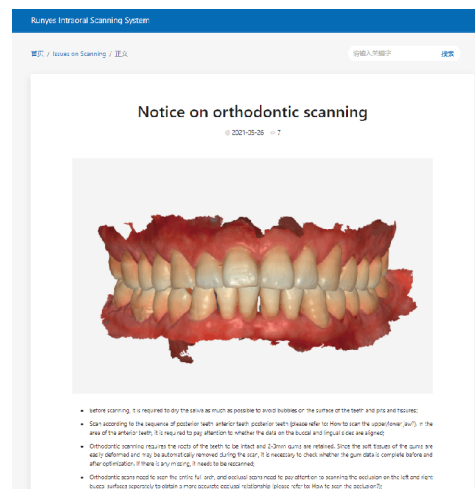
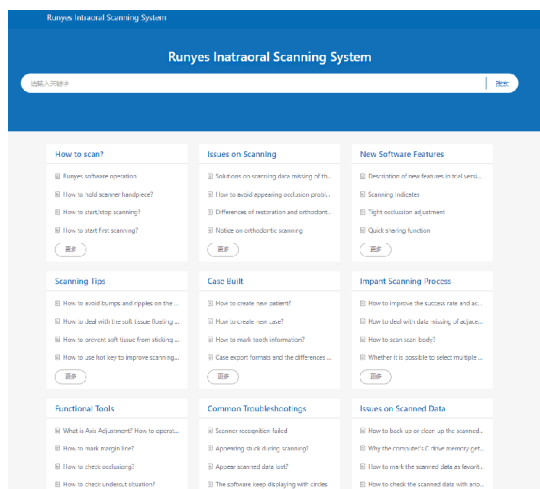
## 07 Cloud Share

The scanned data can be shared with a QR code or link directly, realizing doctor-patient compatibility, communication costs reduction, and high-efficiency digital diagnosis and treatment.



## 08 Complete Online Support System

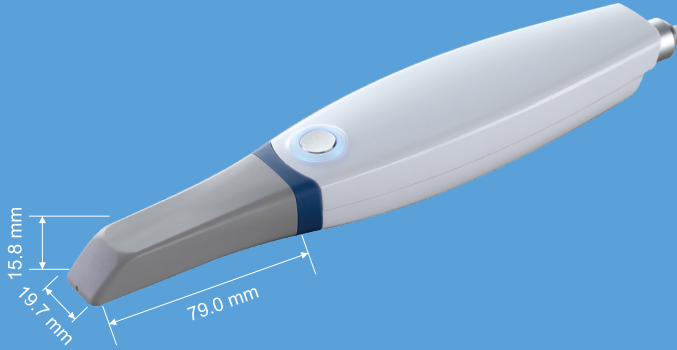
Online support system, including 12 columns, nearly 100 articles, covering all aspects from basic scanning to software functions introduction, with pictures and texts, intuitive and easy to learn.



# Intraoral Scanner Technical Specifications

## Scanner Tip:

The mirror angle of the scanning tip is close to 45 degrees, which can take into account the mesial and distal areas at the same time.



Handpiece Size	240x49.5x30.5mm
Imaging Technology	Optical Continuous Video Capture
Scanning Distance	0-17mm
Accuracy	20um
Imaging Sync	3D
Quick Reset	Yes
Data Refine	Yes
Export Format	STL,PLY,OBJ
Handpiece Weight	210g
Service Life	>30000h

## Basic Computer Configuration Required(Recommended):

- Microsoft Windows 10 64bit Pro edition or above
- Processor: Intel Core i7-9700H, 16GB or above
- Graphics Card: NVIDIA GeForce 1660, 6GB or above  
Note: AMD Graphics may not support all software functions, which is not suggested.
- SSD: 256GB or 128GB + 1TB mechanical disk or above
- Port: USB 2.0/3.0
- Display Resolution: 1920x1080



Laptop Type

## Device Operation Environment:

- a) Temperature: 10°C-40°C
- b) Relative Temperature:  $\leq 85\%$
- c) Atmospheric Pressure: 86KPa-106KPa

## Device Storage Environment:

- a) Temperature: -20°C-55°C
- b) Relative Temperature: 10%-93%
- c) Atmospheric Pressure: 86KPa-106KPa

## Power Supply:

- a) Voltage: 100~240V, 50/60Hz
- b) Power: 25 VA



Monitor Cart Type