



Product Recommendation

YJ-PX8500C High Frequency Digital Radiography System





the same business field .National advanced engineers take over 90% in the R&D.



II. Product Details

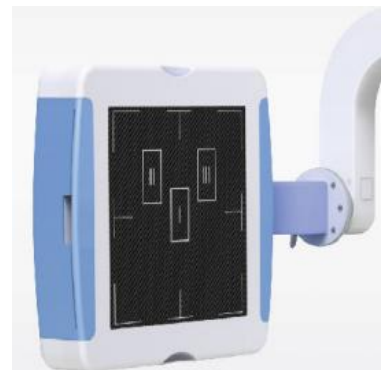


1. Combined Type of generator and X-ray tube:

- Advanced 60Khz high frequency high voltage combine type generator, realize 1ms instant exposure, high performance .
- Three exposure method free change: KV, mAs two adjustment, KV,mA, s three adjustment and AEC function, to satisfy different habit of different doctors.
- Rotate double anode 0.6/1.2, with high heat capacity of 1200KHU
- Digital micro-processed closed loop control and malfunction alarming system.To reduce the dose of X-ray, protect the patients and doctors very well.
- LCD touch screen, beautiful appearance and convenience to operate.

2. Flat Panel Detector

- Apply with A-Si(Amorphous silicon) Toshiba imported Flat panel detector, which could give perfect digital images directly.
- 3K × 3K Acquisition matrix, 143um pixels size, and 4.6Lp/mm ultimate spatial resolution, with DQE values $\geq 70\%$
- Shortest imaging time $\leq 12s$
- 17 " × 17 " Large acquisition area and with the non-center processing technology, no matter the center and border, the quality of the image is the same.
- The detector could be rotated ± 45 degree along the axis direction, to satisfy the different photograph requirement of every body parts, such as Ankle joint, lateral spine
- The detector has the self protection function. It can stop to move when it detect the distance in front of the barrier.





3. Digital Working Station:

- **Case registration:** Auto registration, be equipped with Dicom Workist SCU. To simplify the input process for doctors, greatly reduce the amount of labour and greatly improve the working efficiency
- **Image Acquisition:** Automatic window adjustment, Automatic cropping, Automatic transmit.
- **Image Processing:** Tissue equilibrium, W/L adjustment, Gamma correction, interest district, reversed phase, noise reduction, smooth, sharpen, pseudo color, edge extraction, shadow compensation, filter nuclear, single window, dual-window, four windows, movement, right rotated 90°, left rotated 90°, level mirror image, vertical mirror image, magnifying glass, image zooming, reset, layer information, label character, drawing label, length measurement, angle measurement, rectangular length, rectangular area, elliptic length, elliptic area.
- Dicom Image Transmit, Dicom Image Storage, Dicom Image viewing, Dicom Image printing .
- Convenient to connected to the PACS system



4. Operation System:



- Be equipped with 19" imported LCD high resolution monitor screen, the delicate and richness degree of image is far higher than the normal medical monitor. International advanced level.
- Brightness and Contrast are higher than 1000NIT, far higher than the normal LCD screen of 400 NIT.
- These features can make the doctor diagnose more accurate and smooth.
- Human graphical touchable screen. Just need a slight click on the human body position and shape, the parameters can be set easily.
- Be equipped with the microphone and remote enclosure control. The doctor can control outside the operating room.
- Be equipped with various set of infrared facilities to protect the machine from the mis-operation of the doctors.
- Optional PLXF153 operating room. Battery power supplied, Infrared unlock
- Optional SONY, CODONICS film printer.





5. Mechanical Movement:

For Close-distance Range



Film key

For Middle distance Range



Hand Controller

For Long-distance Range



Touchable LCD Screen



- The self-designed and manufactured electric U-arm mainframe can move up and down, and rotate in a wide range, which can satisfy the requirements of multi-site photography.
- Adopting original Italian geared motor, the features are reliable performance, lower noise, longer service life.
- The unique three three -dimension and three independent control system, can achieve one-key reposition.
- For Close-distance Range, the operator can operate the machine by the film key on the combined generators and X-ray tube; For Middle distance Range, can operate by the hand controller; For Long-distance Range can operate by the touchable LCD screen outside the operating room

6. Basic configuration:

- | | |
|---|---------|
| 1. Newly designed U-arm mainframe | one set |
| 2. High power combined high frequency high voltage X-ray source | one set |
| 3. High inverter power supply electrical cabinet | one set |
| 4. Multi-function operation screen | one set |
| 5. 17" ×17" digital detector | one set |



- 6. 19" medical specialized LCD display one set
- 7. Imaging workstation one set
- 8. Hand-held control one set
- 9. Imported 18" ×18" grids one set
- 10. AEC automatic exposure ionization chamber one set

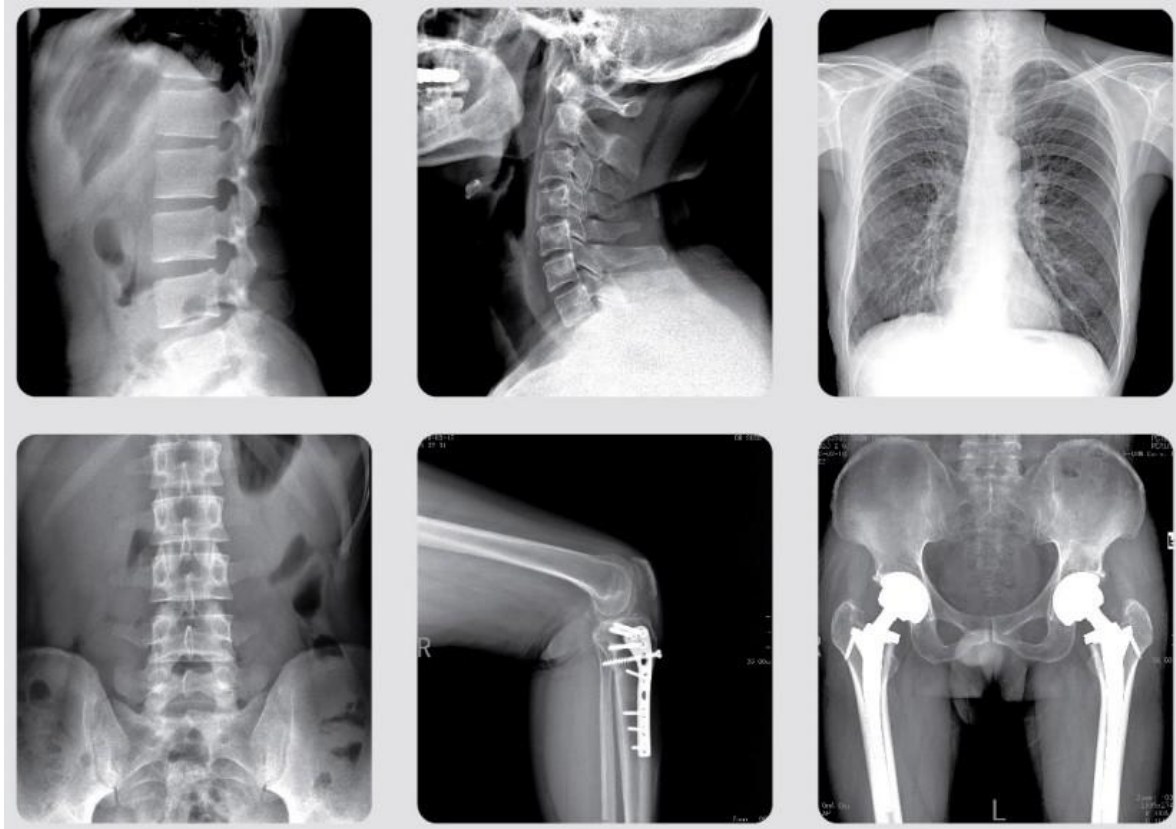
High-frequency X-ray machine	Output power		55KW	
	Main inverter frequency		60KHZ	
	X-ray tube	Dual-focus X-ray tube	Small focus:0.6 Large focus:1.2	
		Focus Outpower	27Kw/75 Kw	
		Anode Capacity	210kJ(300kU)	
		Anode Angle	12°	
		Speed of rotating anode	8400rpm	
	Tube Current		10mA- 500mA	
	Tube voltage		40-150KV	
	mAS		0.1~630mAs	
	Exposure Tume		0.001s~12.5s	
AEC		5ms		
Digital Image System	Digital Detector	Field of view	17*17 Inch	
		Pixel	3K*3K	
		Ultimate spatial resolution	4.6LP/mm	
		Pixel size	143um	
		Output grayscale	14bit	
	Imaging time	12S		
	Image Workstation	Acquisition module	Inside enhancement module	
Image information management		Dicom image transmission, film printing, mass storage(hard disk, compact disk)		
Mechanical structure and performance	U-arm	Vertical movement range	≥1250 mm(motorized control)	
		Focus-screen movement range	1000mm-1800mm(motorized control)	
		Rotation range	-40°~+130°(motorized control)	
	Photography table	Table size	2000mm*650mm	
		Table height	≤720mm	
		Transverse movement	200mm(±100mm,electromagnetic lock)	
		Longitudinal movement	100mm(±50mm, electromagnetic lock)	
Power supply			380V 50/60HZ	

Remarks: For the X-ray tube, we have Toshiba imported X-ray tube for option.



7. Application:

This machine is applied to take radiography on every part of human body, such as head, limbs, chest, limbus and abdomen and etc..



Remark: Our DR has been awarded the National Key High Technology Technology by four government departments around the world.



IV. After-Sales Service

We will supply the good service according to the ISO9001 quality system. We have a professional engineers team with many years experience on the X-ray machine installation and maintenance to supply the service with you .

1. Installation Service

The professional engineers will responsible for the installation, adjustment until the normal working of the machine. Also they will have a training until customers learn how to operate the machine during the future using .

2. Maintenance Service

All the machines will be guaranteed one-year warranty, and whole life service. Our after-sale service department will responsible for supplying the related solutions by various ways within 2 hours, and 24 hours call service. If customers need the on-site service, we will arrive the on site within 24 working hours. Besides, we will responsible for establishing equipment service files freely for customers including: Service Tag; Install information; Maintenance history; Equipment state evaluation.