



## YJ-H9800vet 5 Part Hematology Analyzer

- 14 inch premium large color touch screen
- SMART-FLOW fluidic patent technology
- Compact design with reagents on board, save the valuable bench space of small labs
- Accurate measurement for low value PLT with advanced Sweep-Flow technology
- Low volume sample consumption CBC+DIFF mode :  $\leq 20\mu\text{l}$ , CBC mode :  $\leq 10\mu\text{l}$
- Low running cost
- Easy to operate

### Specification

<b>Methodology</b>	Tri-angle laser scatter + flow Cytometry + impedance method for WBC; impedance method for RBC and PLT counting
<b>Test mode</b>	CBC mode, CBC+DIFF mode. Venous whole blood, Capillary whole blood and Prediluted
<b>Sample volume</b>	CBC+DIFF mode: $\leq 20\mu\text{l}$ , CBC mode: $\leq 10\mu\text{l}$
<b>Throughput</b>	More than 60 samples per hour, operatable 24 hours a day, auto sleeping and waking-up functions
<b>Storage</b>	Up to 100,000 results(including histogram, scattergram, patient information)
<b>Operation language</b>	English and more is coming
<b>QC control</b>	X-B, L-J, X, SD, CV %
<b>Interface</b>	1 LAN port, 4 USB ports
<b>Communication</b>	Bi-direction LIS, support HL7 protocol Internal RFID reader
<b>Print out</b>	Support various external USB printers, printout formats user definable
<b>Working environment</b>	Temperature: 10°C- 30°C, humidity: 20-85%
<b>Power supply</b>	100-240 V, 50/60Hz
<b>Dimension</b>	48 CM ( L ) * 38 CM ( W ) * 52 CM ( H )
<b>Weight</b>	36 KG

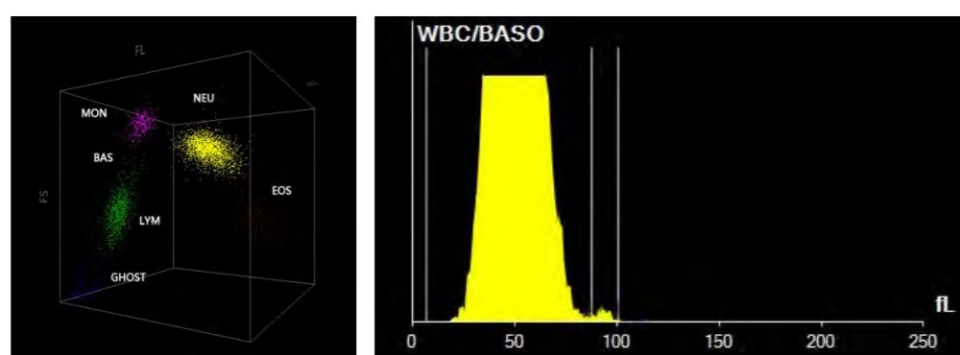
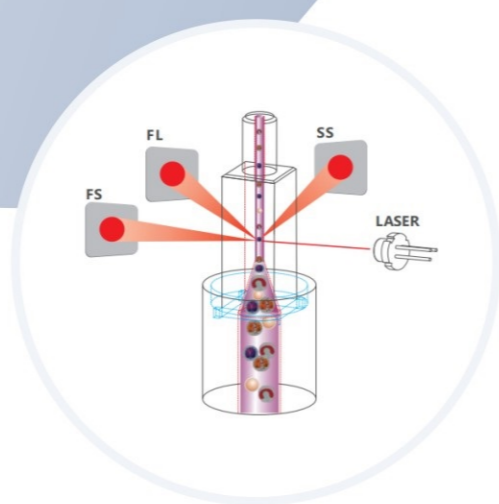


## YJ-H9800vet

### Feature

- Tri-angle Laser scatter
- Flow Cytometry method
- 3D Scattergram analysis
- Impedance method for RBC and PLT counting

### Principles



- Cyanide free reagents for HGB test
- Automatically sample probe cleaning (inside and outside)
- 5 -part differentiation of WBC, 29 parameters, Double channel counter
- More than 60 samples test per hour
- Tri-angle Laser Scatter, electrical resistance for RBC and PLT counting
- Low sample consumption: CBC+DIFF mode :  $\leq 20\mu\text{l}$ , CBC mode :  $\leq 10\mu\text{l}$
- 14 inch color touch screen, resolution 1366\*768
- Large storage capacity: Up to 100,000 results(including histogram, scattergram, patient information)
- Internal thermal-sensitive printer, support various external USB printers

### Parameters

- WBC, RBC, HGB, HCT, MCV, MCH, MCHC, RDW-SD, RDW-CV, PLT, MPV, PCT, PDW, P-LCR, P-LCC, NEU%, YM%, MON%, EOS%, BAS%, NEU#, LYM#, MON#, EOS#, BAS#
- 1 3D Scattergram, 3-histograms : WBC/BASO, RBC, PLT

### Precision

Parameters	Linear Range	Carry Over	CV %
WBC	0.0-300x10 <sup>9</sup> /L	$\leq 0.5\%$	$\leq 2\%$
RBC	0.0-8x10 <sup>12</sup> /L	$\leq 0.5\%$	$\leq 1.5\%$
HGB	0.0-250g/L	$\leq 0.5\%$	$\leq 1.5\%$
PLT	0.0-300x10 <sup>9</sup> /L	$\leq 1.0\%$	$\leq 4.0\%$

