



GS505 Installation Operation and Maintenance Manual

**Wuhan Gao Sheng Wei Ye
Technology Co., Ltd**

TEL : +86 02788771752

editor : hong kui

2021.08.25



1、Equipment installation requirements

- 1、The equipment needs to be installed on a flat, solid ground
- 2、Installation environment requirements
 - Power requirements : A power supply with a ground wire that meets the standard
 - requires that the zero-ground voltage be less than 3V
 - Space requirement : The minimum distance between the back cover of the equipment and the wall or cabinet must be greater than 30cm, and the minimum distance between the right side of the equipment and the wall or cabinet should be able to fully open the front door.
 - network requirements : Support 2.4Ghz wifi signal, not support 5Ghz wifi signal
 - Temperature requirements: please drain the water in the equipment and turn off the machine when it is below 0 degrees Celsius
- Water supply requirements : Must be pure water, tap water must not be used

2、 Material installation and requirements

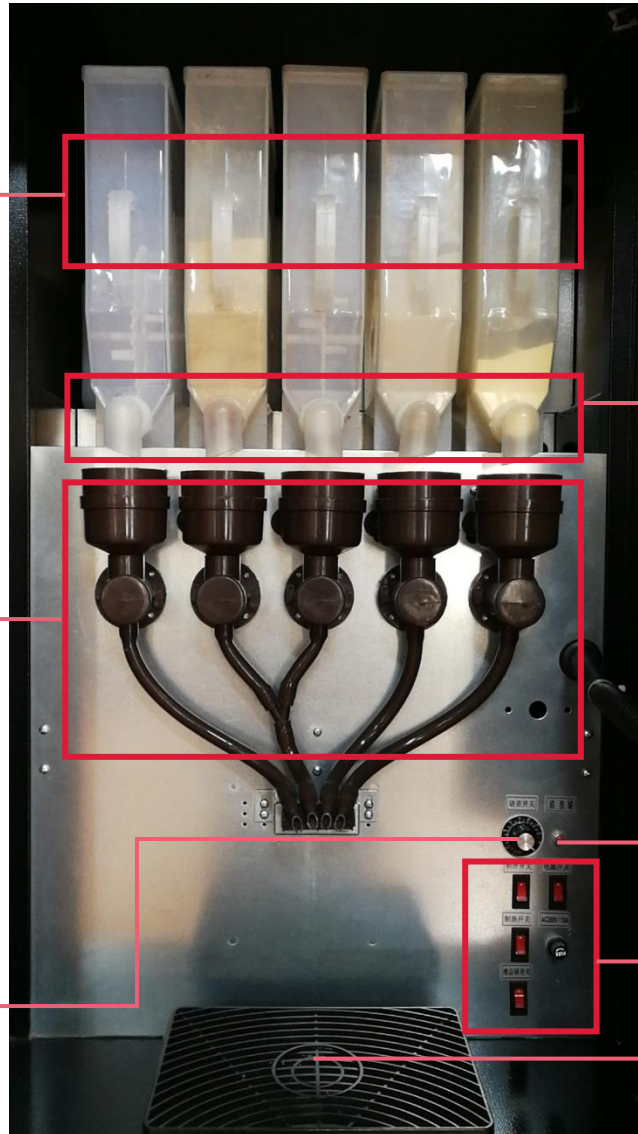
- 1、 Open the material carton and check the material list
- 2、 Refer to the following pictures and texts to install the material components in the corresponding position
- 3、 Add the corresponding raw materials to the material box
- 4、 After the powder is assembled, rotate the discharge nozzle 180 degrees so that the discharge nozzle opening faces down

2.2.1、 Structure introduction

Powder box
It is recommended to wash with warm water every two months and dry it before adding powder

Mixing components
Need to be disassembled and cleaned with warm water every week

Volume buttons



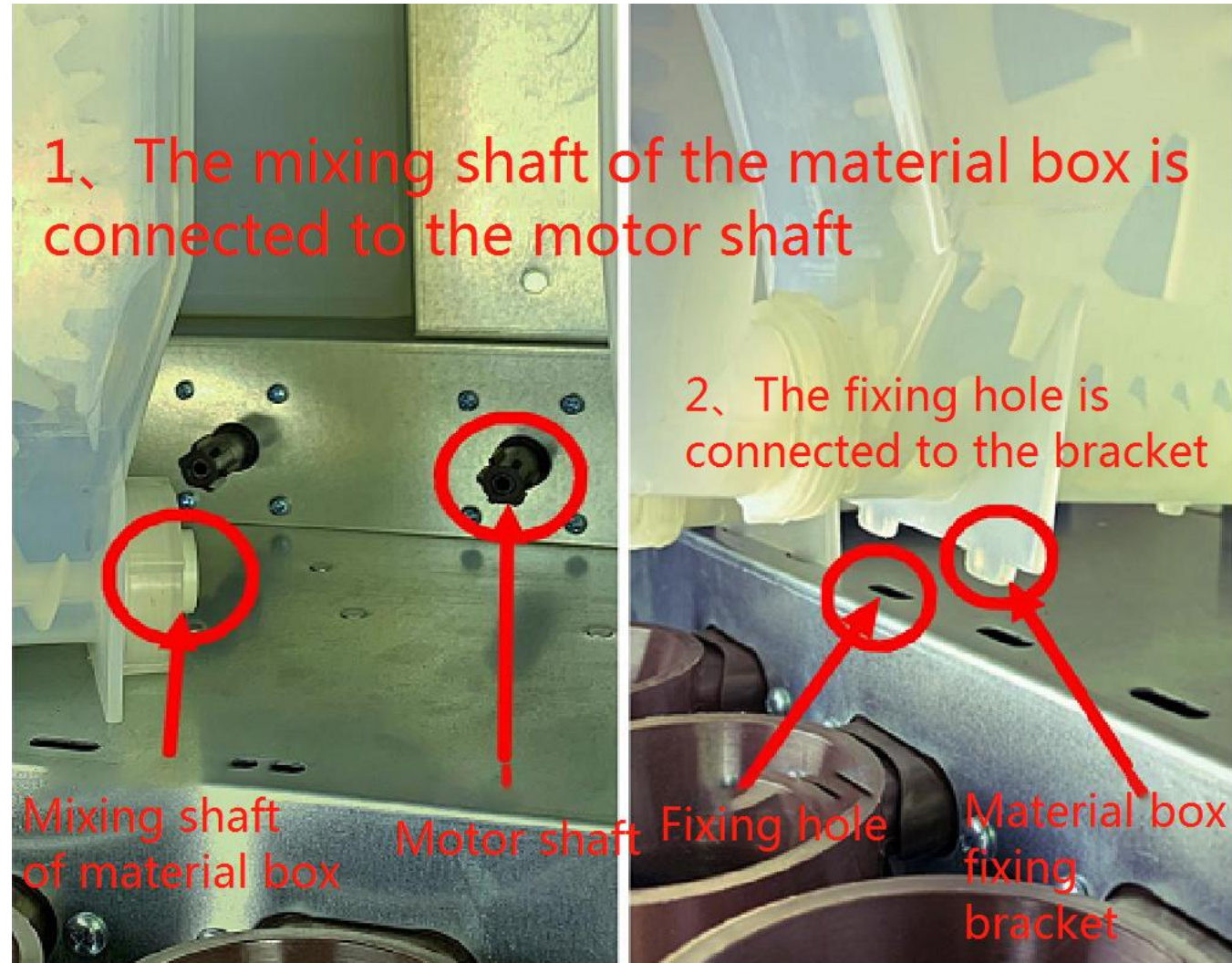
The powder outlet, when you need to replenish the powder, you need to rotate the powder outlet upwards

Automatic cleaning button

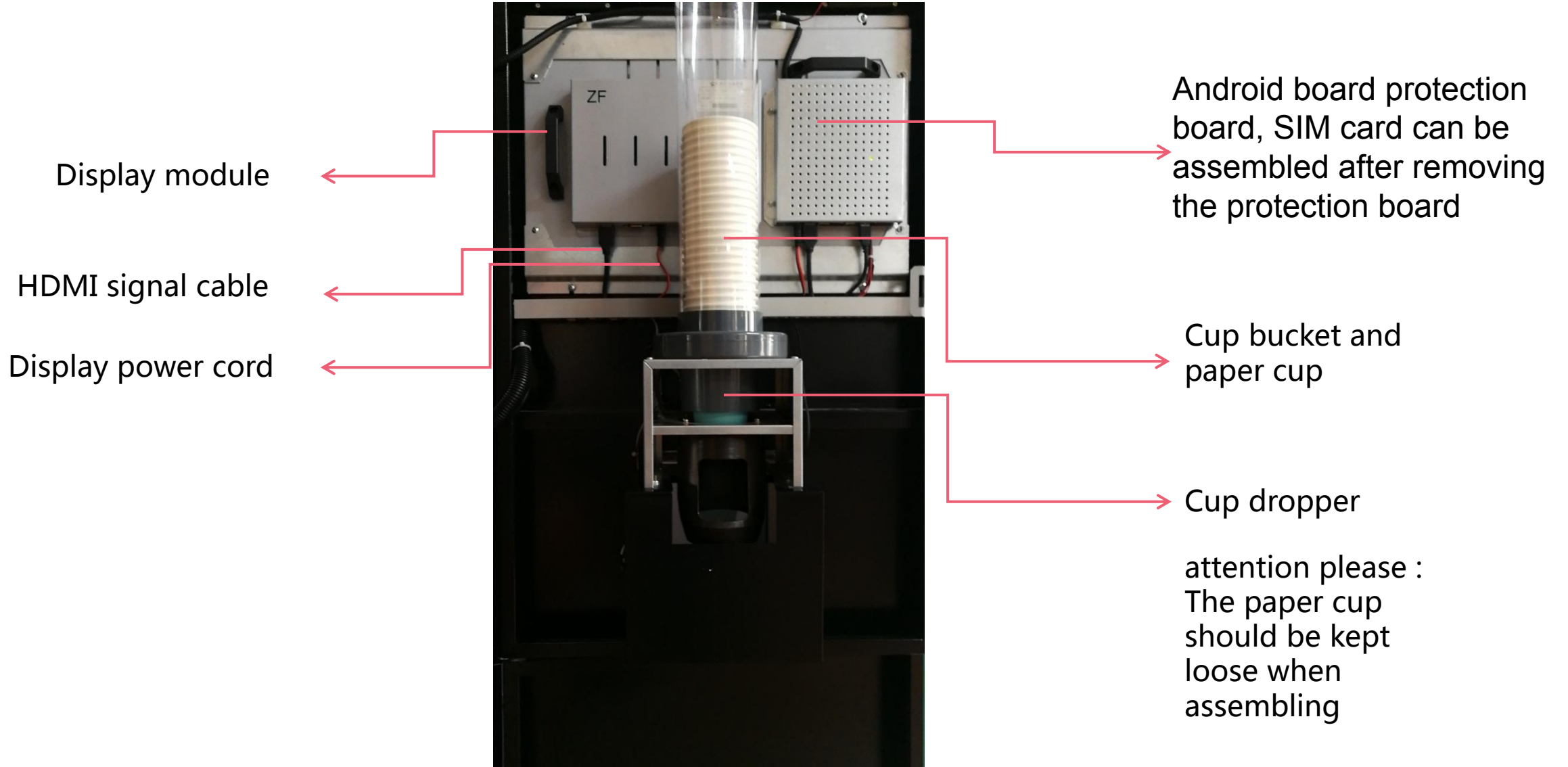
Power switch and fuse

tray
Clean every two days

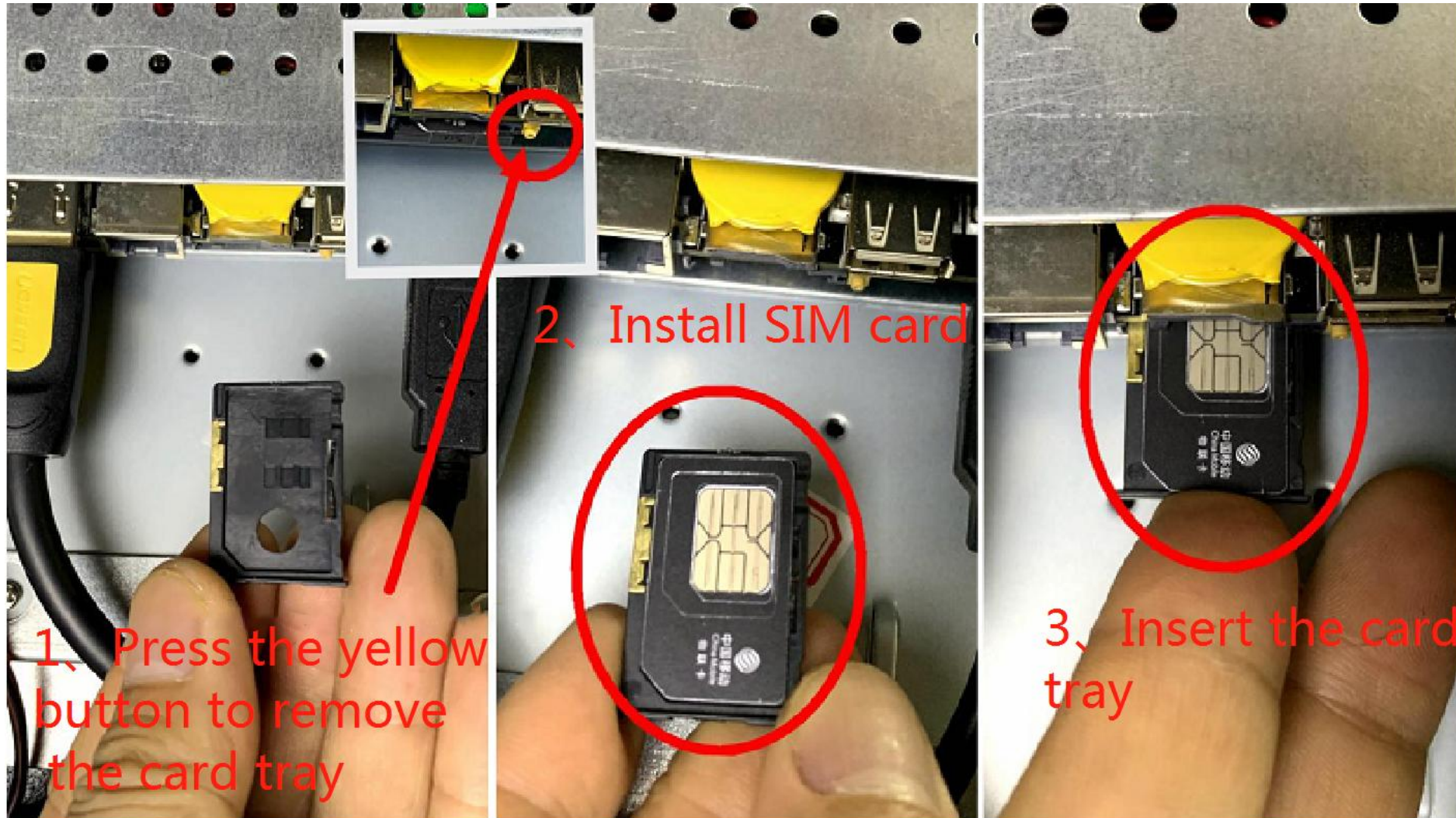
2.2.2、 Material box installation



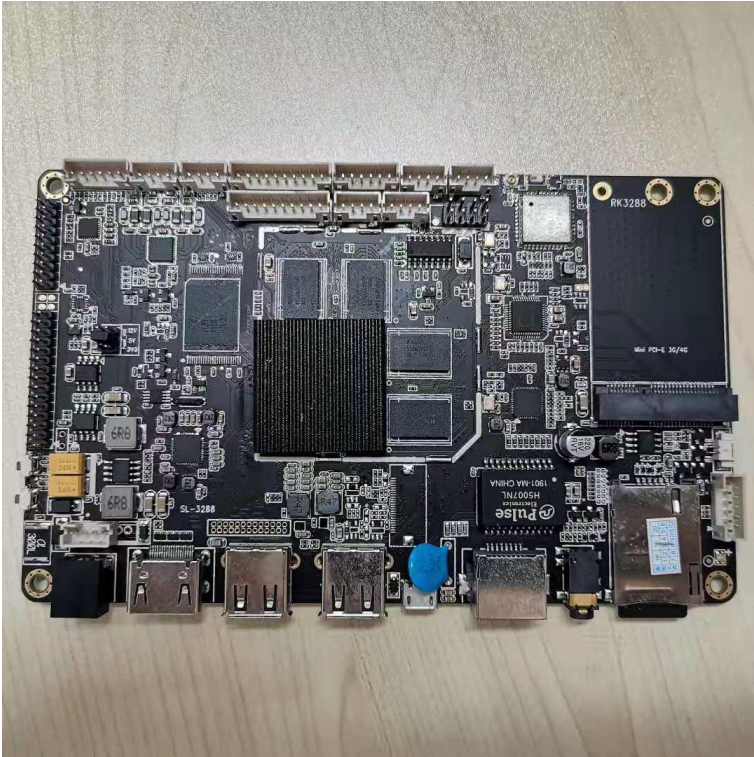
2.2.3、Material box installation



2.2.4.1、SIM card installation method (3368Android board)



2.2.4.2、SIM card installation (M2 Android board)



Press the card towards the card slot, the card will be ejected

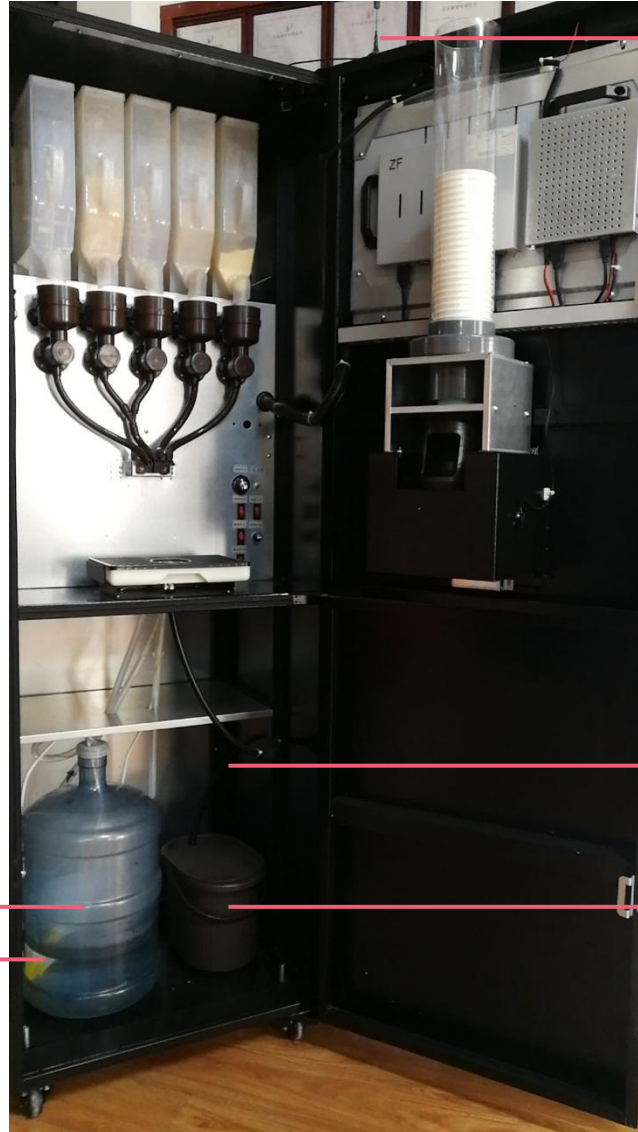


When installing the SIM card, you need to pay attention to the direction of the card and insert the card to the end

2.2.5、 Lower cabinet structure

attention please:

1. Bottled water must be assembled before the equipment is powered on
2. The pump must sink to the bottom of the bucket
3. The pipe cannot be bent
4. Waste water needs to be dumped every 2 days



Bottled water

Water pump

antenna

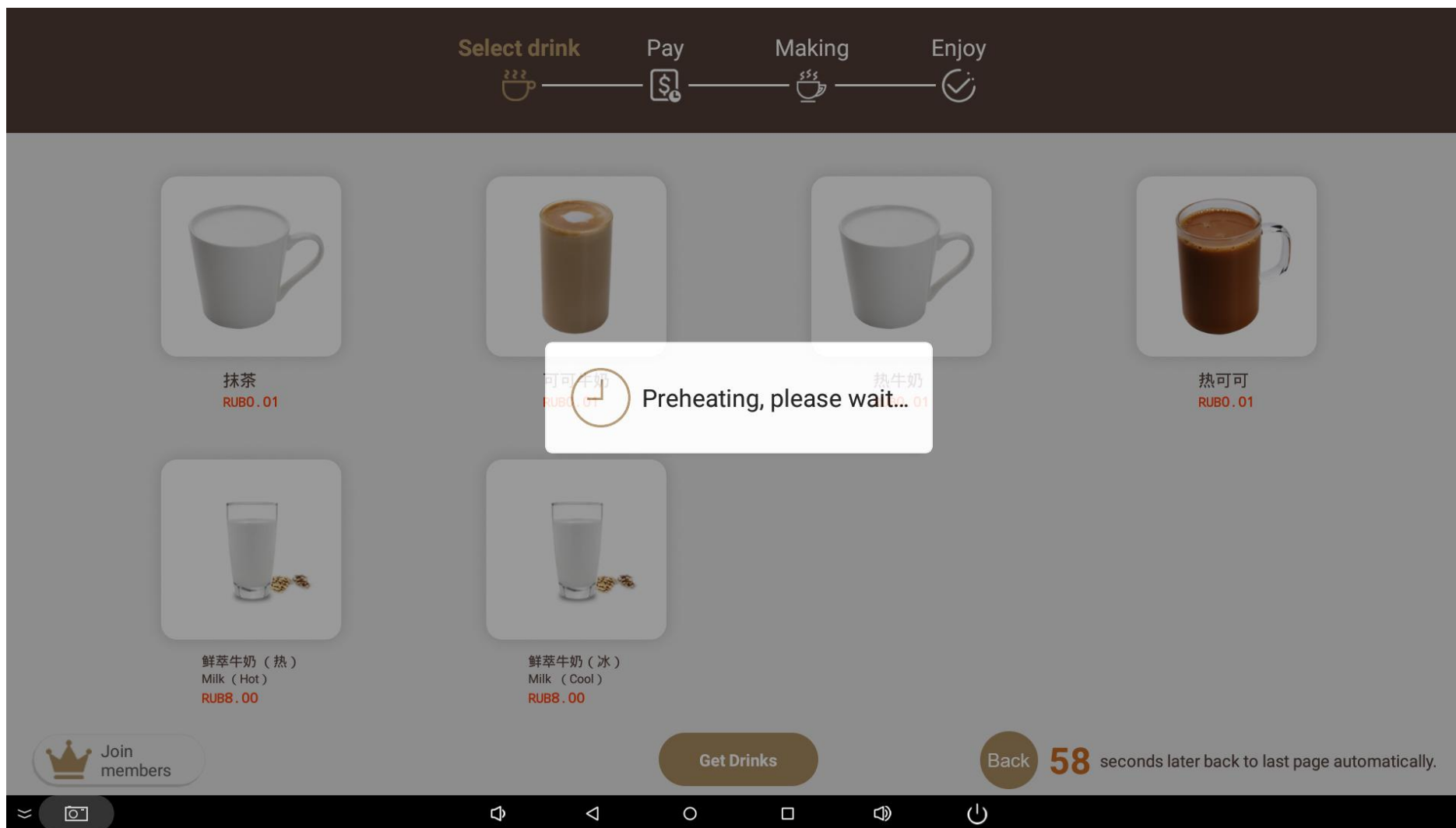
Waste water drainage pipe

Waste bucket

3、 software interface

1. Switch account
2. Related settings and records
3. Order introduction

3.1.1、The water in the water tank is heated



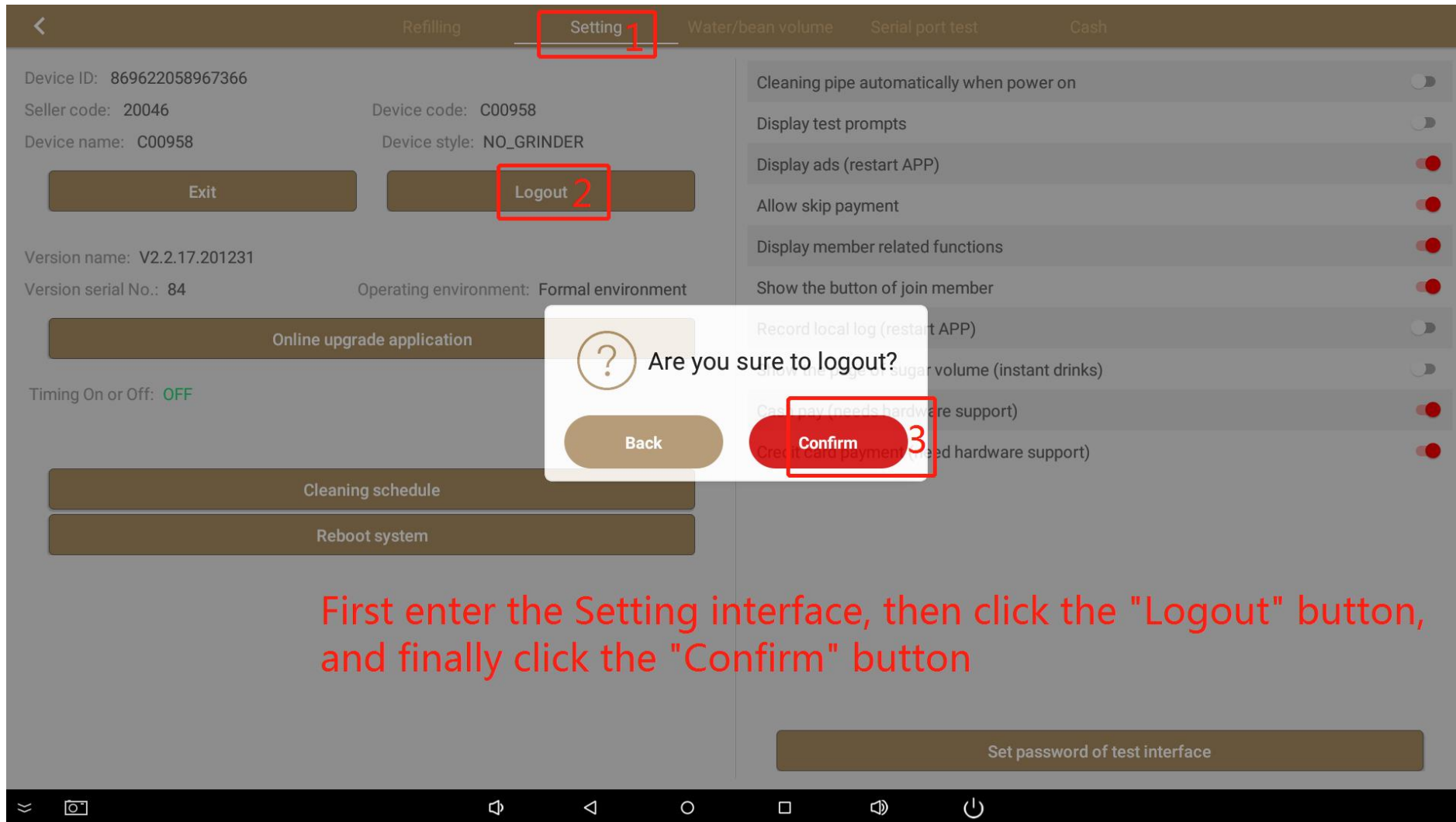
3.1.2.1、Switch login account

The screenshot displays the 'Select drink' screen in the Coffeeji app. At the top, a progress bar shows the stages: 'Select drink' (with a coffee cup icon), 'Pay' (with a dollar sign icon), 'Making' (with a coffee cup icon), and 'Enjoy' (with a checkmark icon). Below the progress bar, a red box labeled '1' is on the left and a red box labeled '2' is on the right. A red arrow points from the text 'Quickly click on position 1 twice and position 2 once' to box '1', and another red arrow points from the same text to box '2'. The main area contains a grid of drink options:

- 抹茶 (Matcha) RUB0.01
- 可可牛奶 (Cocoa Milk) RUB0.01
- 热牛奶 (Hot Milk) RUB0.01
- 热可可 (Hot Cocoa) RUB0.01
- 鲜萃牛奶 (热) (Fresh Brewed Milk (Hot)) Milk (Hot) RUB8.00
- 鲜萃牛奶 (冰) (Fresh Brewed Milk (Cool)) Milk (Cool) RUB8.00

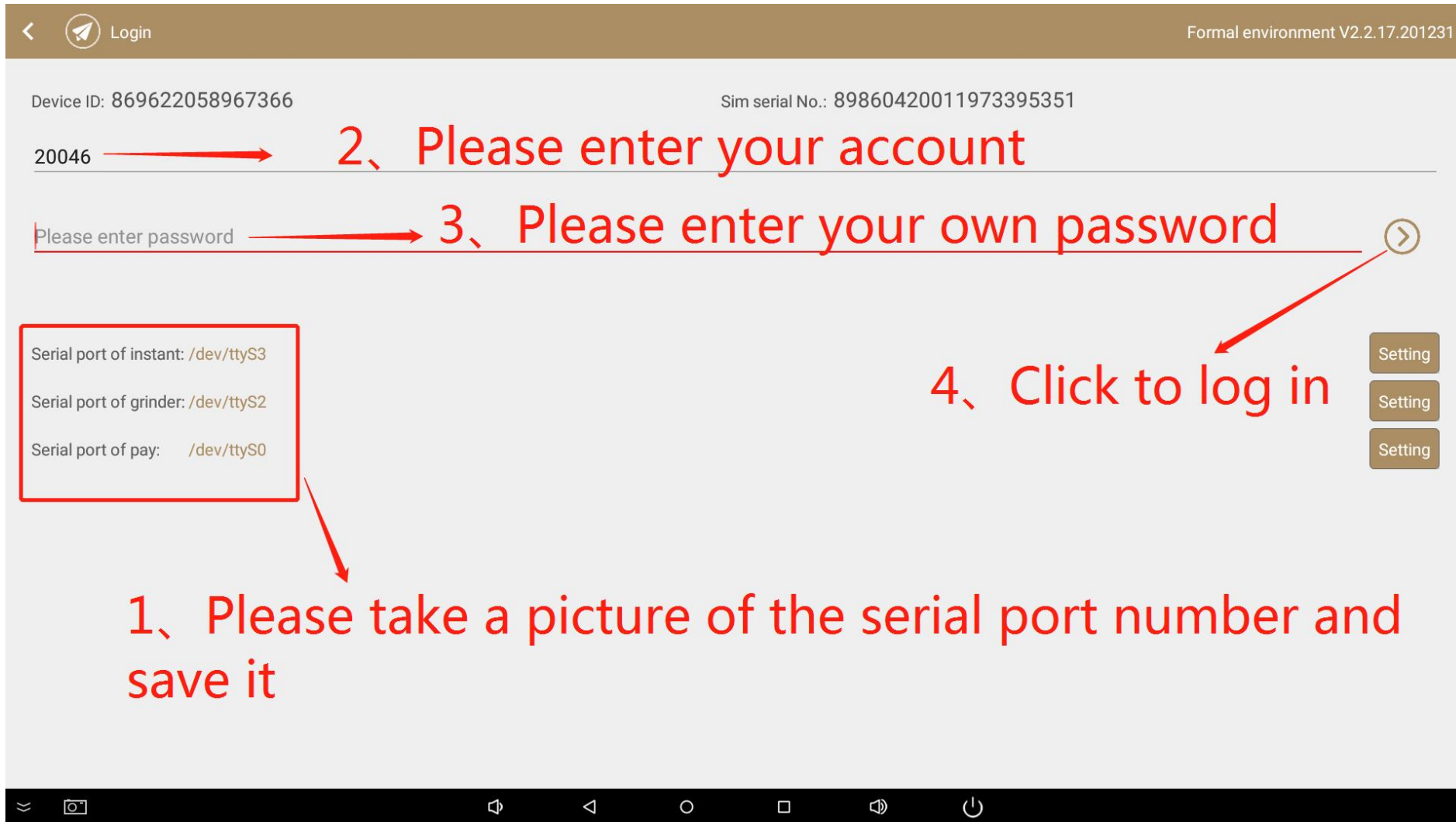
At the bottom, there is a 'Join members' button with a crown icon, a 'Get Drinks' button, and a 'Back' button with a timer showing '43 seconds later back to last page automatically.' The bottom navigation bar includes standard Android icons for back, home, and recent apps.

3.1.2.2、Switch login account

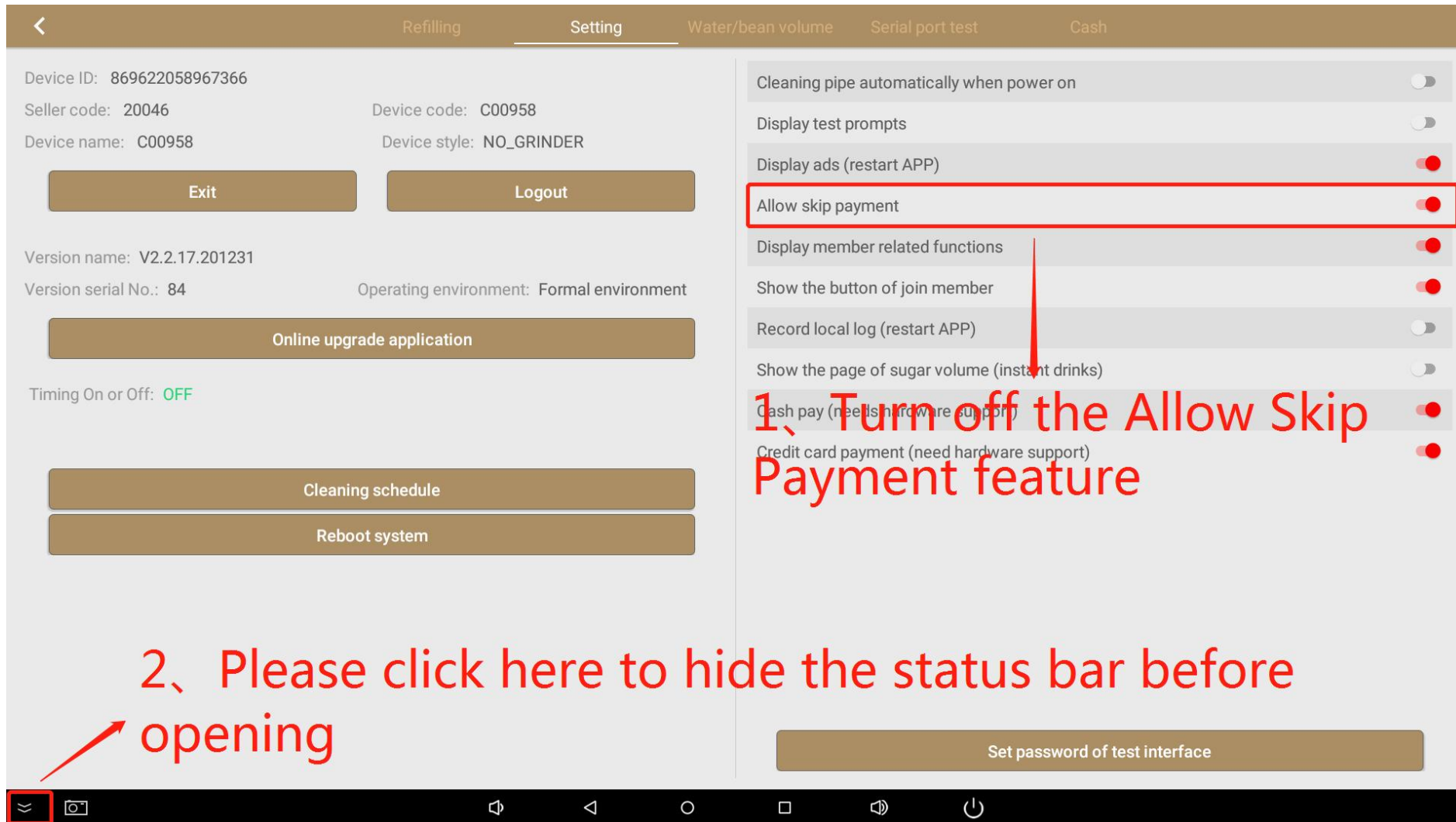


First enter the Setting interface, then click the "Logout" button, and finally click the "Confirm" button

3.1.2.3、Switch login account



3.2.1、Function setting



3.2.2、Material quantity supplement setting

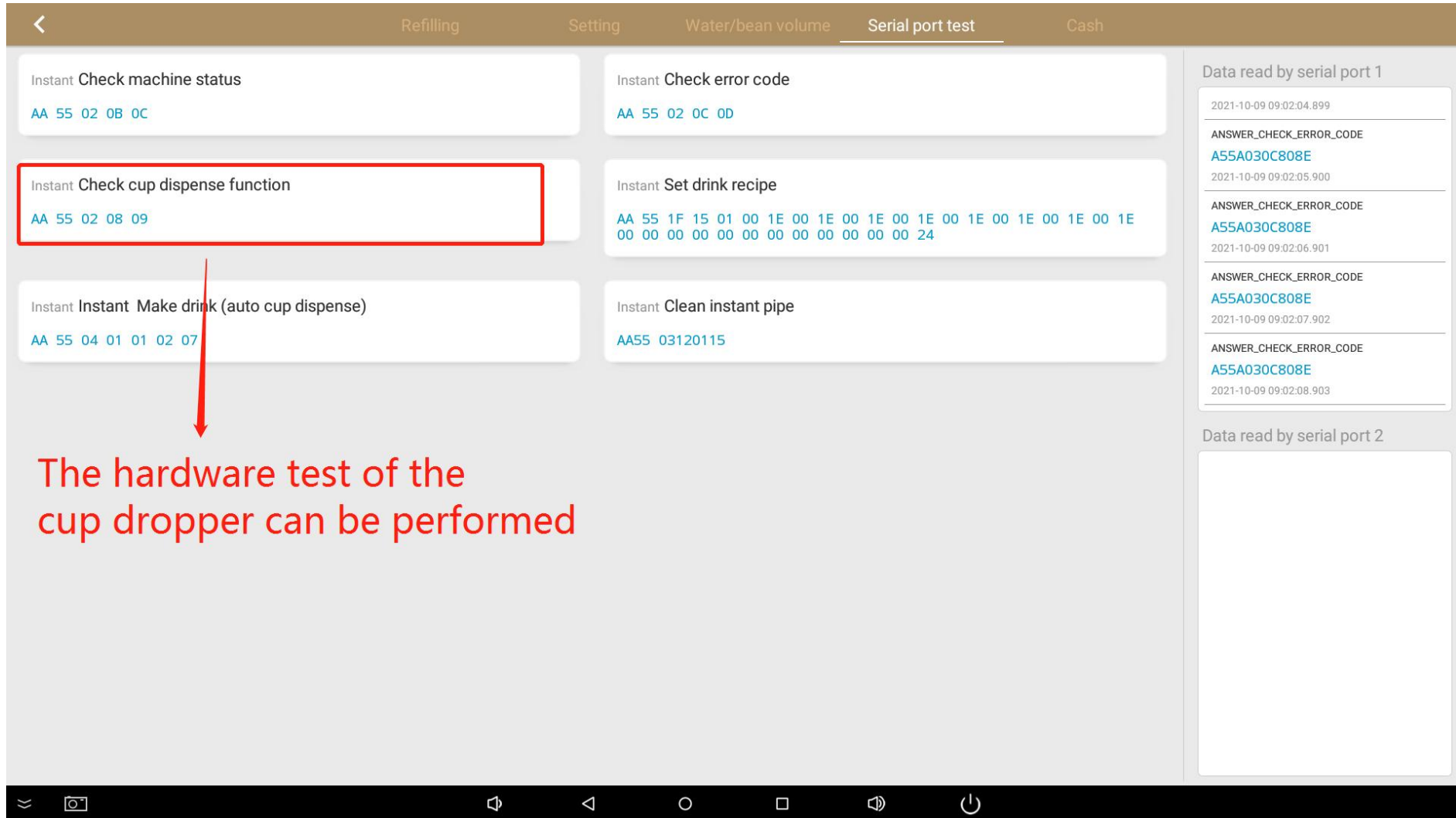
1、click the "Refilling" button

2、Enter the number that needs to be added. The first number 0 represents the current remaining value, and the back 1000 represents the maximum value of supplementary materials

3、click here Upload information

Ingredient	Current Value	Maximum Value
Ingredient 1 原料1	995	1000
Ingredient 2 原料2	1000	1000
Ingredient 3 原料3	996	1000
Ingredient 4 原料4	1000	1000
Ingredient 5 原料5	1000	1000
Ingredient 6 原料6	0	1000
Ingredient 7 原料7	0	1000
Cup road Paper cup	999	1000

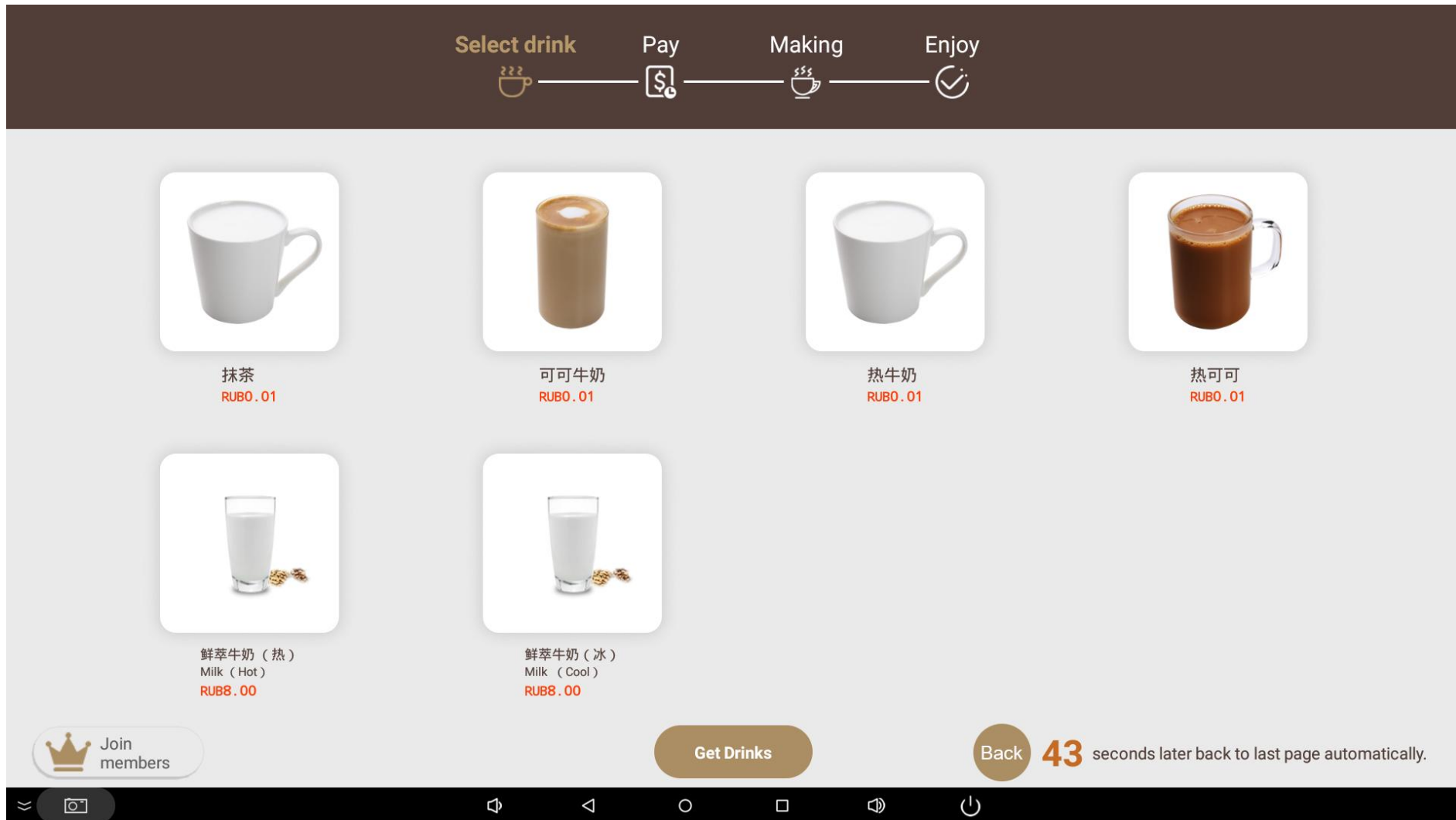
3.2.3、Serial test



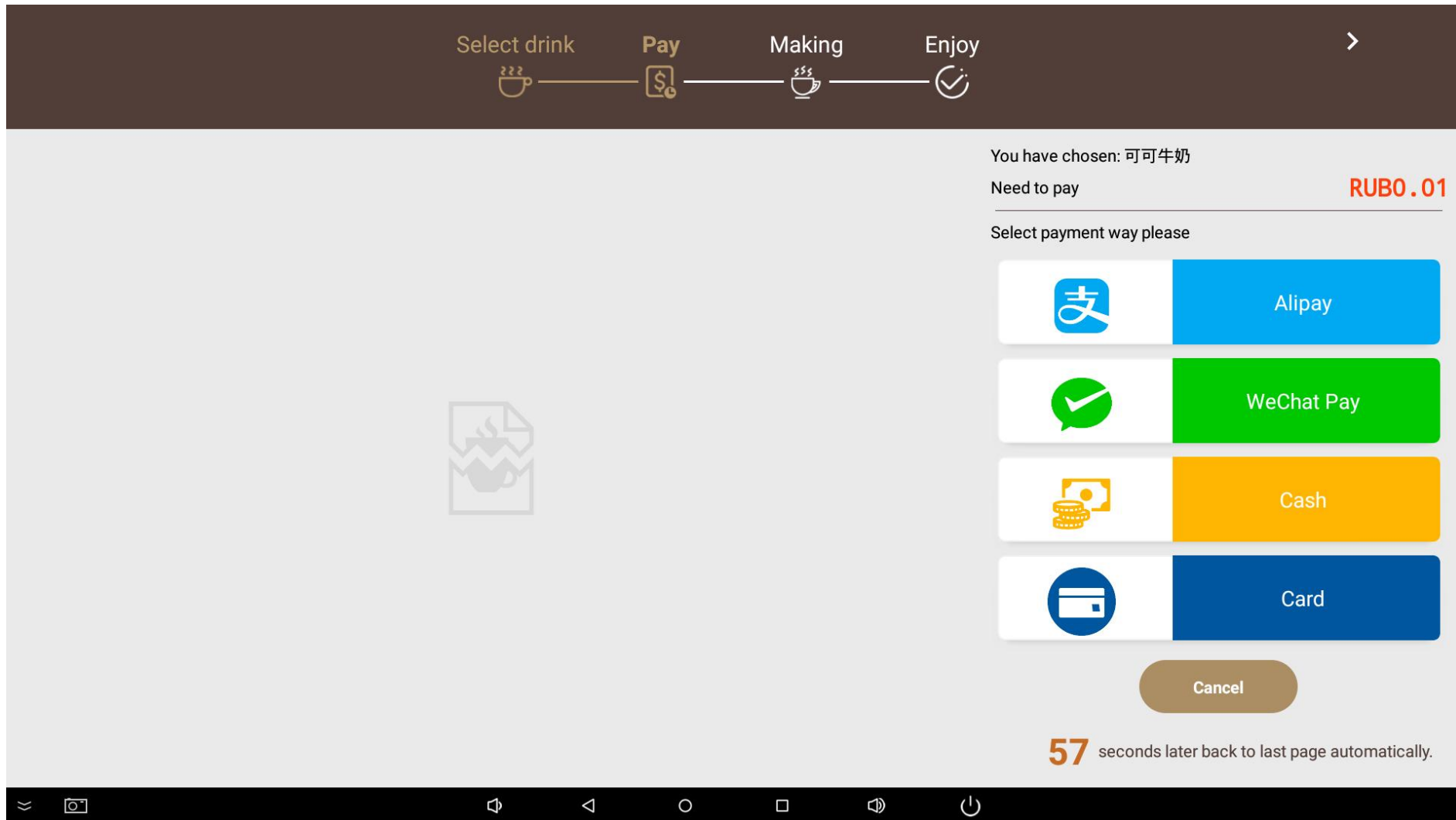
3.2.4、 The Cash interface needs to be taken and saved

Currency code (three letters)	<u>RUB</u>
Banknote conversion ratio between min currency value and main currencies	<u>1</u>
Coin conversion ratio between min currency value and main currencies	<u>1</u>
Value of coin change	<u>1</u>
Card reader conversion ratio between min currency value and main currencies	<u>100</u>

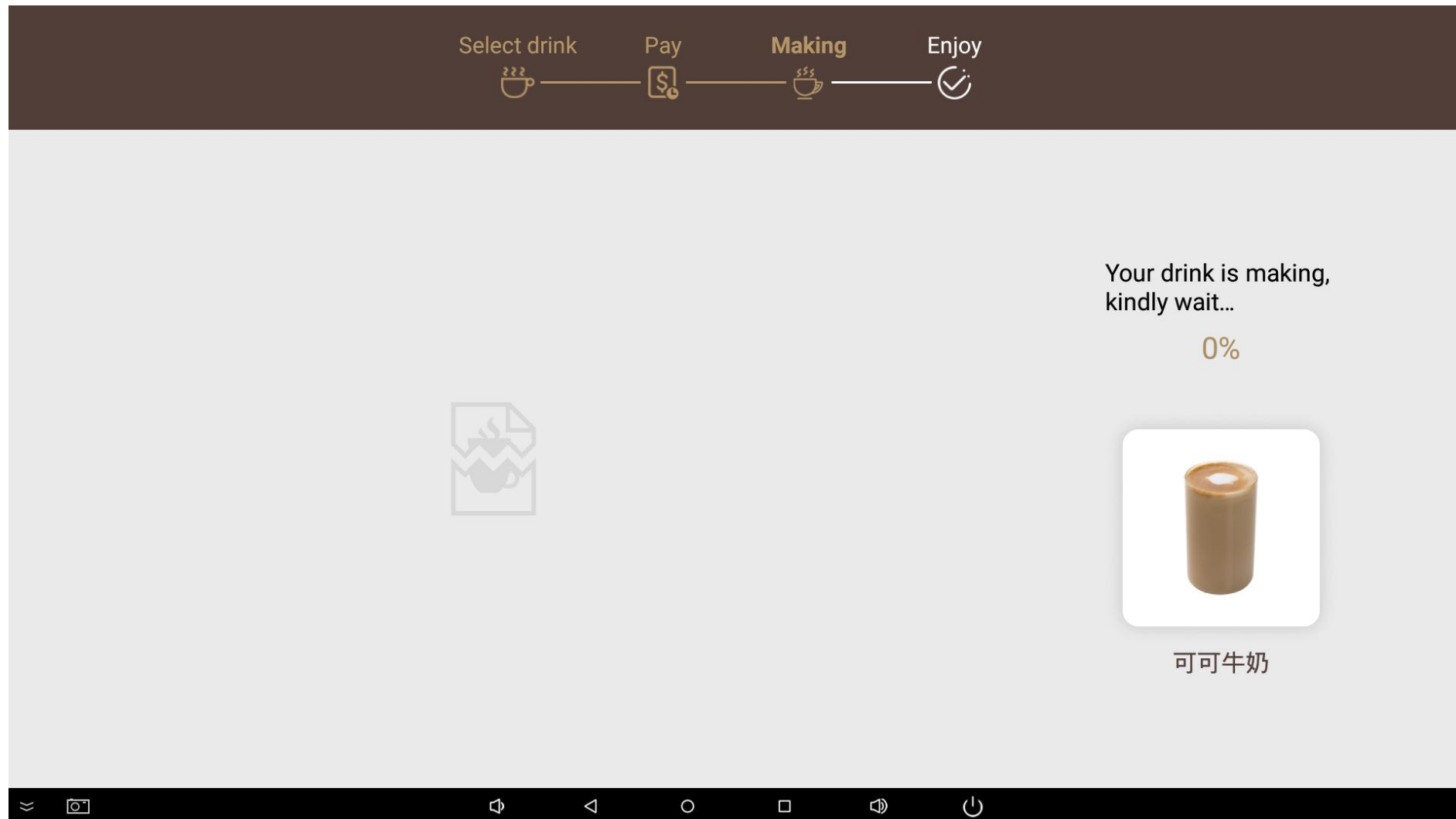
3.3.1、Trading interface introduction



3.3.2 Payment interface introduction



3.3.3、 Drink preparation waiting interface

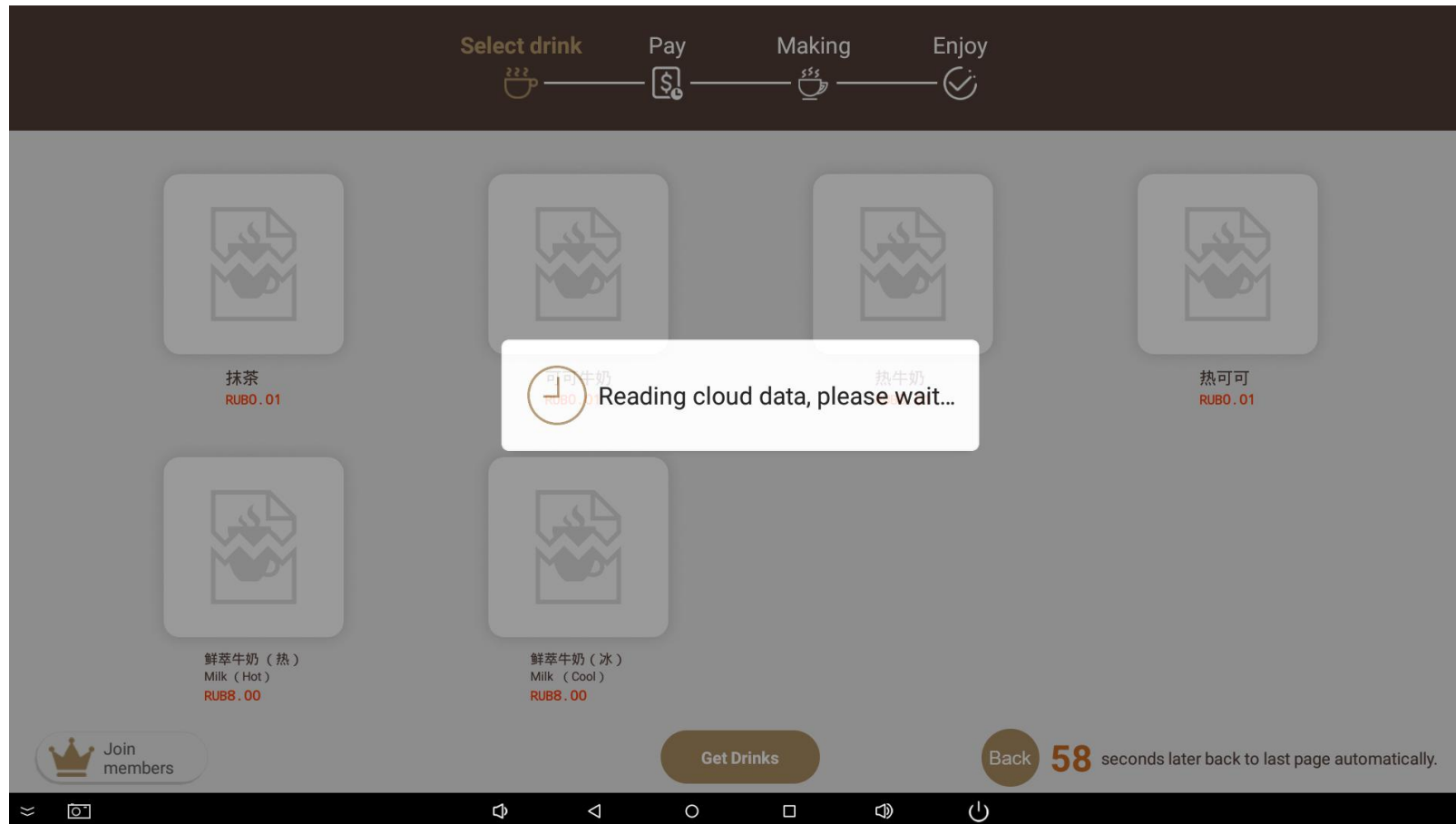


4、Common faults and solutions

- 1. Network failure
- 2. Insufficient material failure: E01, E02, E03 code
- 3. Report E11 code
- 4. Report E0002 code
- 5. Common setup issues

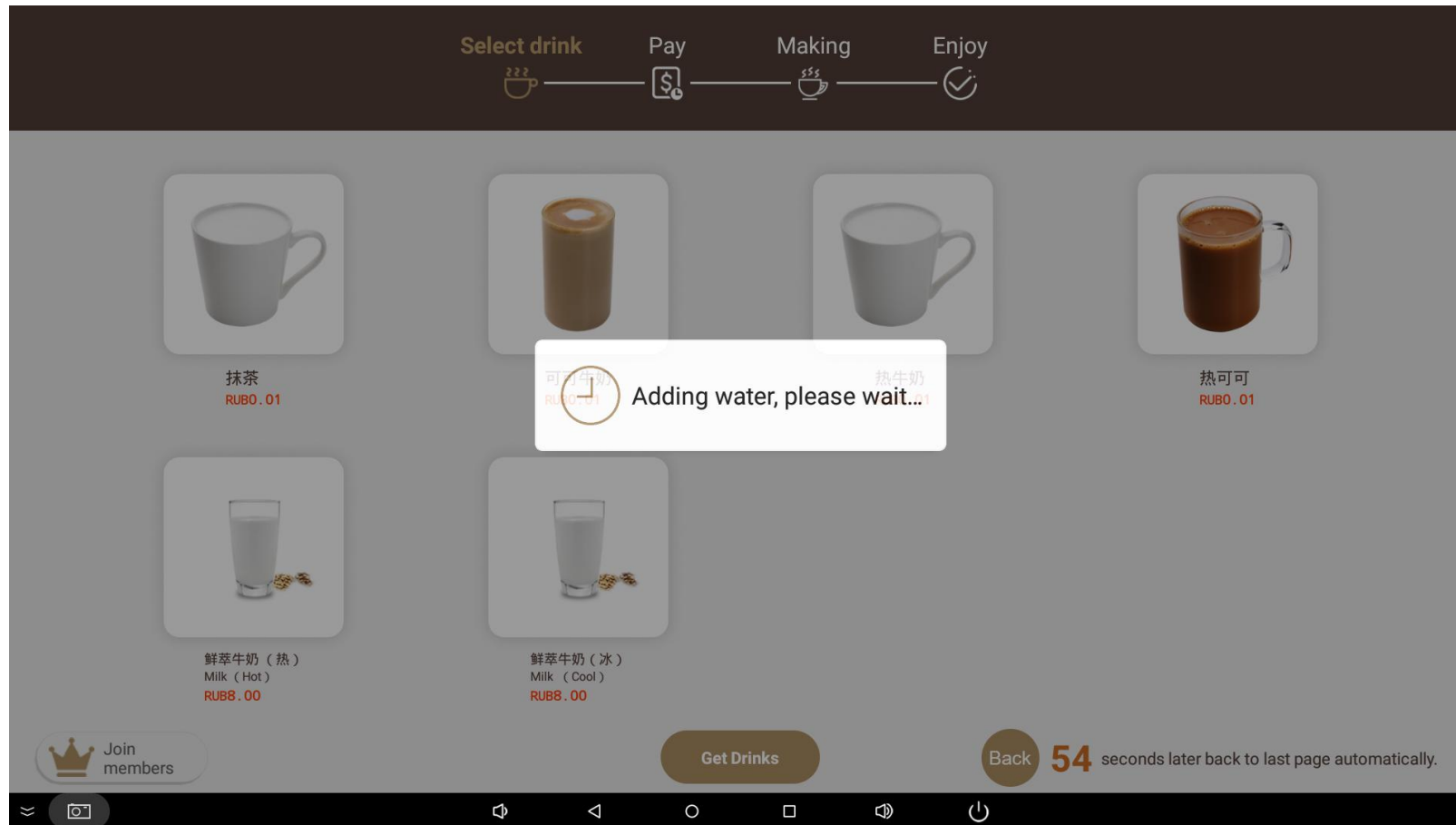
4.1、Network failure

- We need to check the network status. For example, the
- status of the SIM card, whether the SIM card is installed, whether
- the antenna is intact, and whether there is poor contact



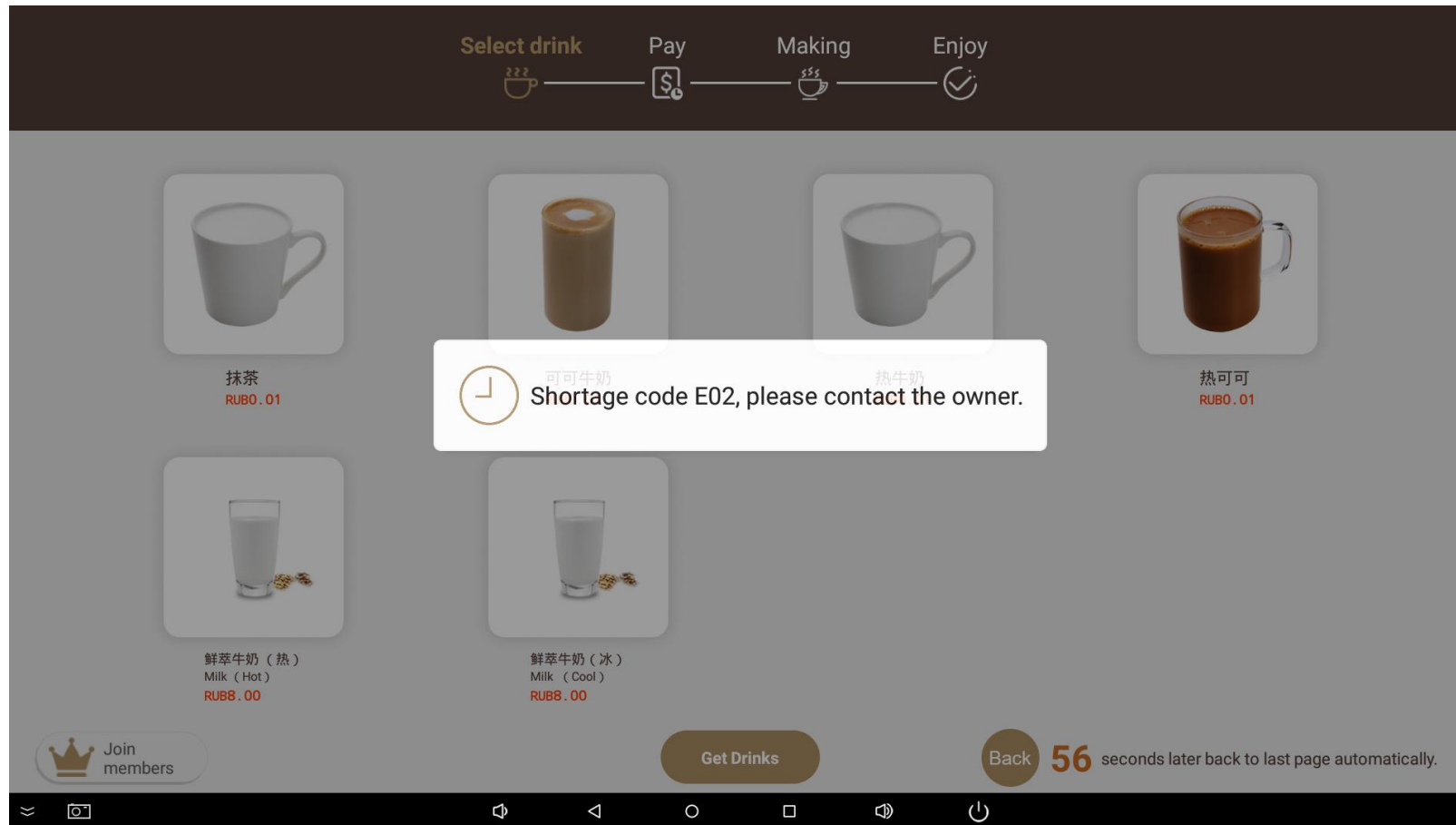
4.2.1、Fault code E01

- Insufficient water in the equipment, check whether the bottled
- water is sufficient, check whether the water pump sinks to the
- bottom of the bucket, and check whether the water pipe is bent



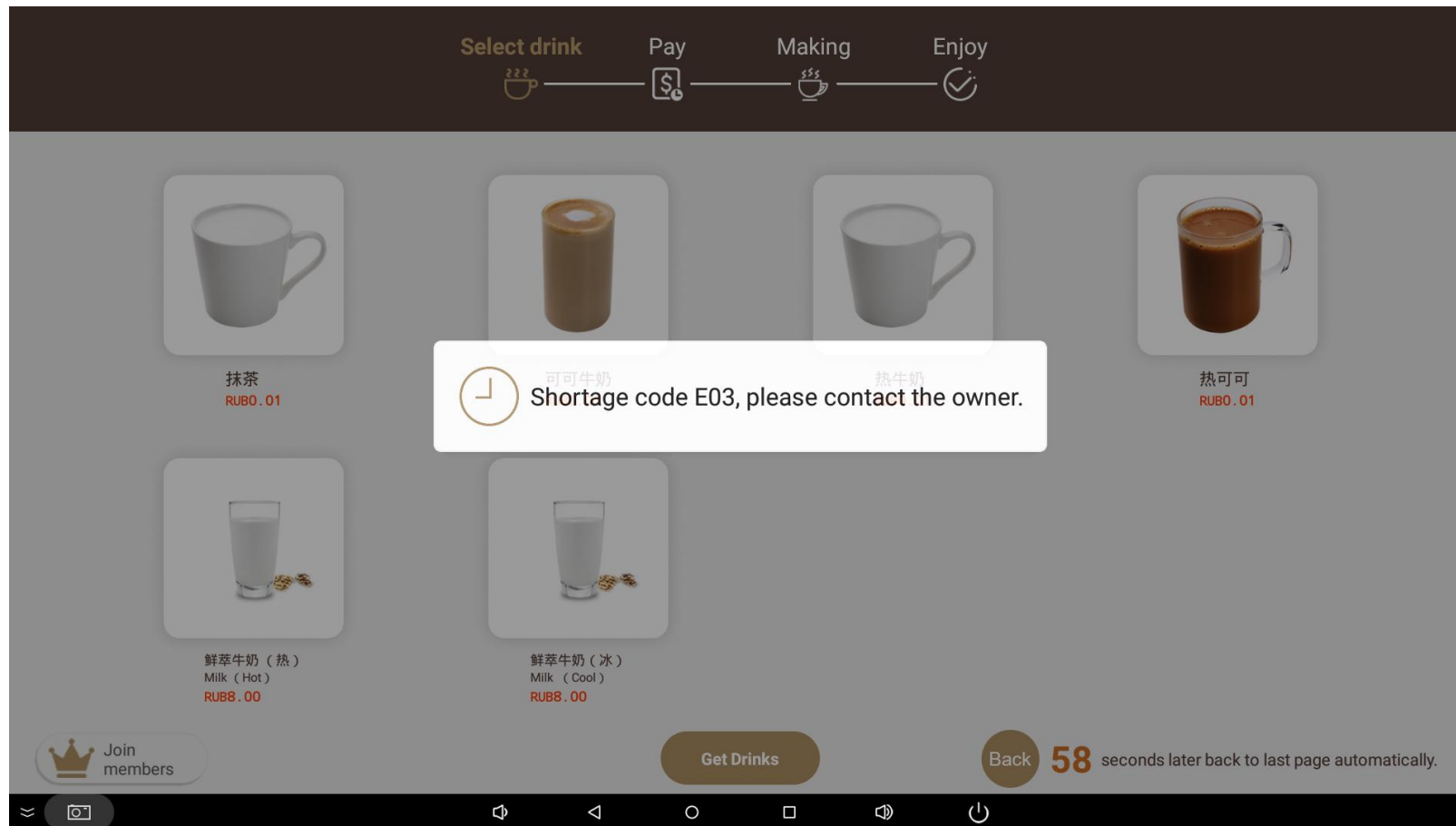
4.2.2、Fault code E02

- Insufficient paper cups, check whether the paper cups are
- enough, enter the APP management interface, "Refilling"
- page checks whether it has been "Refilling"



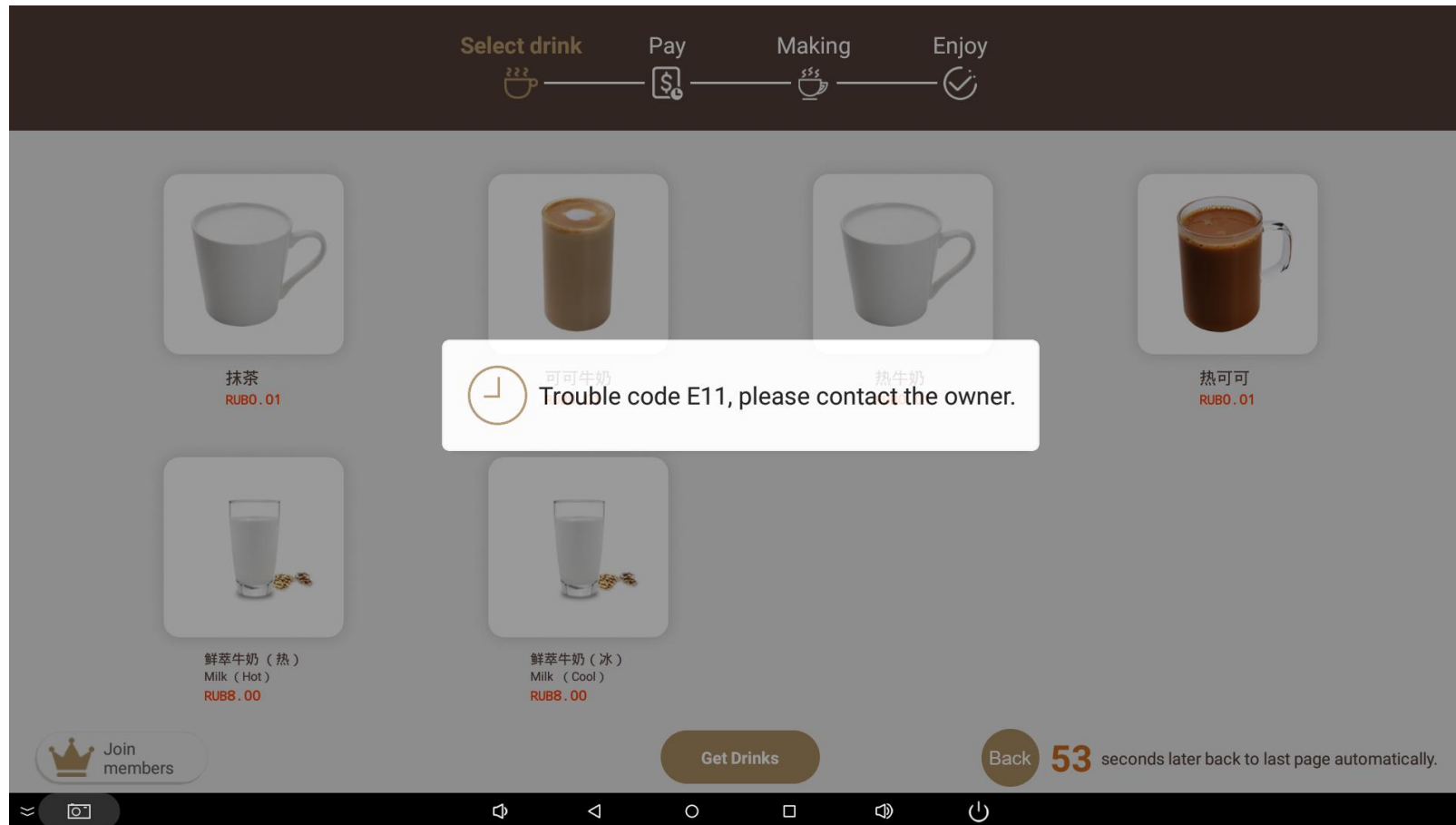
4.2.3、Fault code E03

- At the same time lack of water and cup, the inspection
- method is the same as above

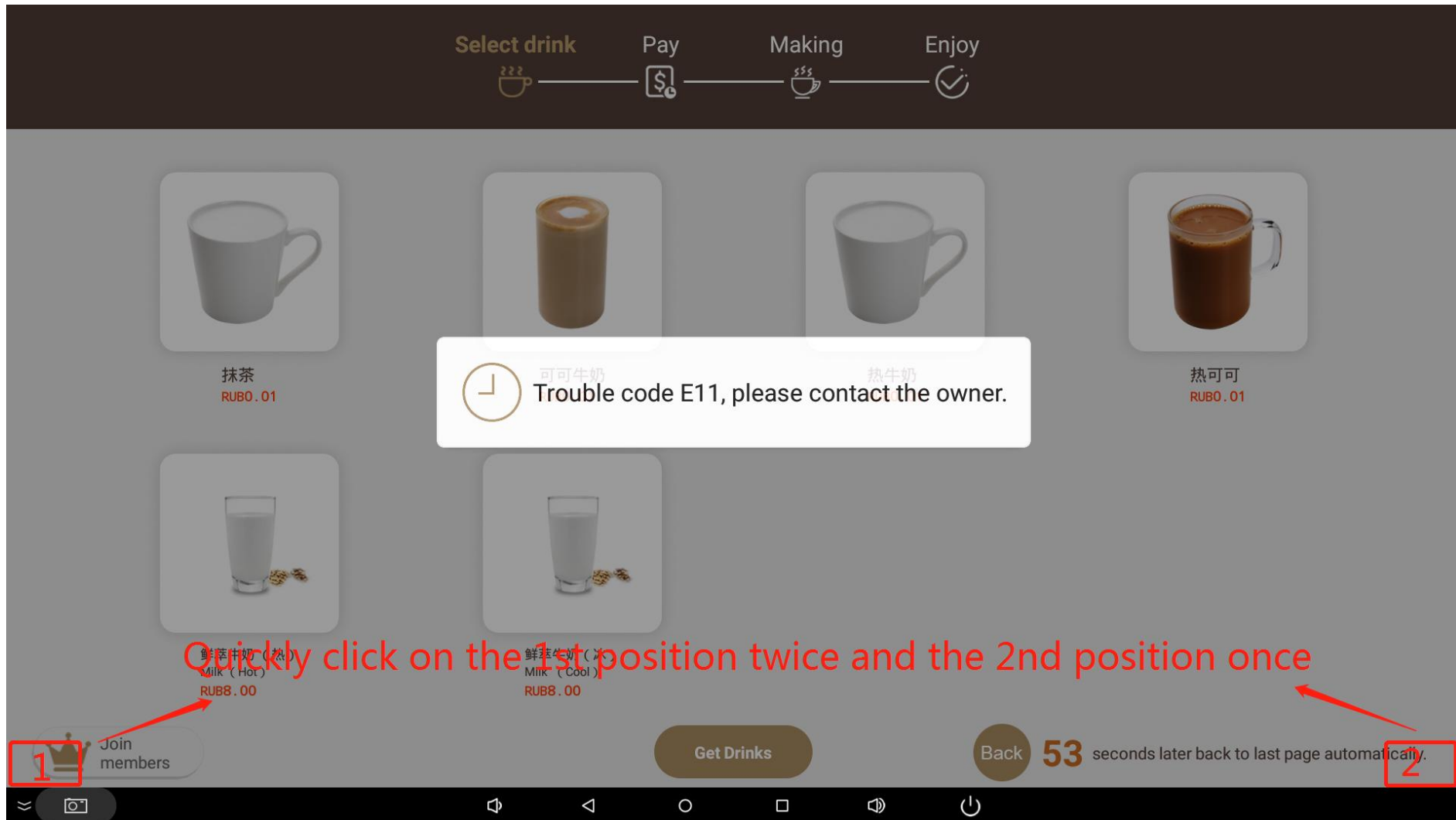


4.2.4、Fault code E11

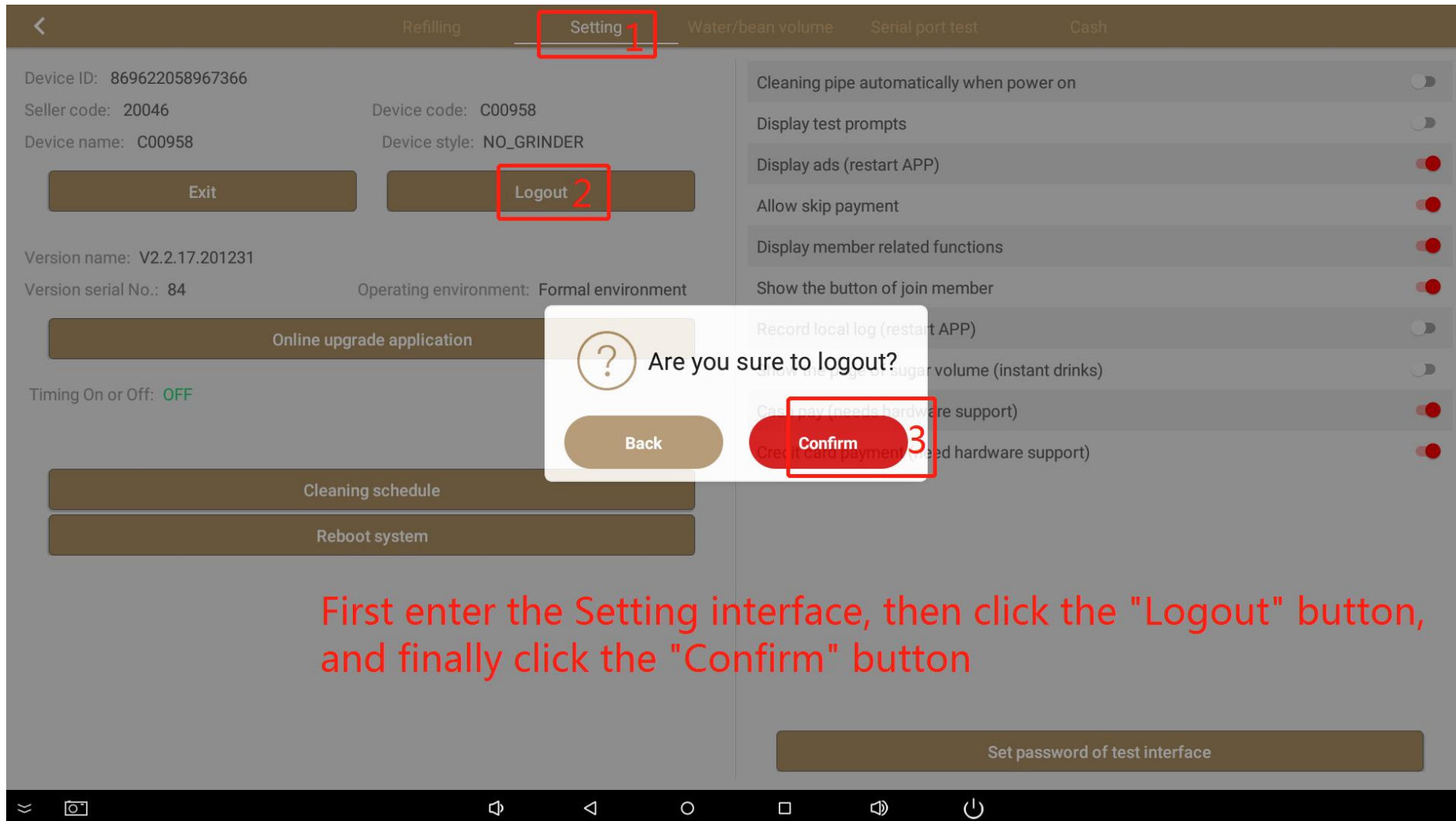
- The fault code E11 means that the communication is not
- smooth, you need to check whether the serial port number
- is set incorrectly, and whether the main board is powered on



4.3.1.1、Modify serial port number

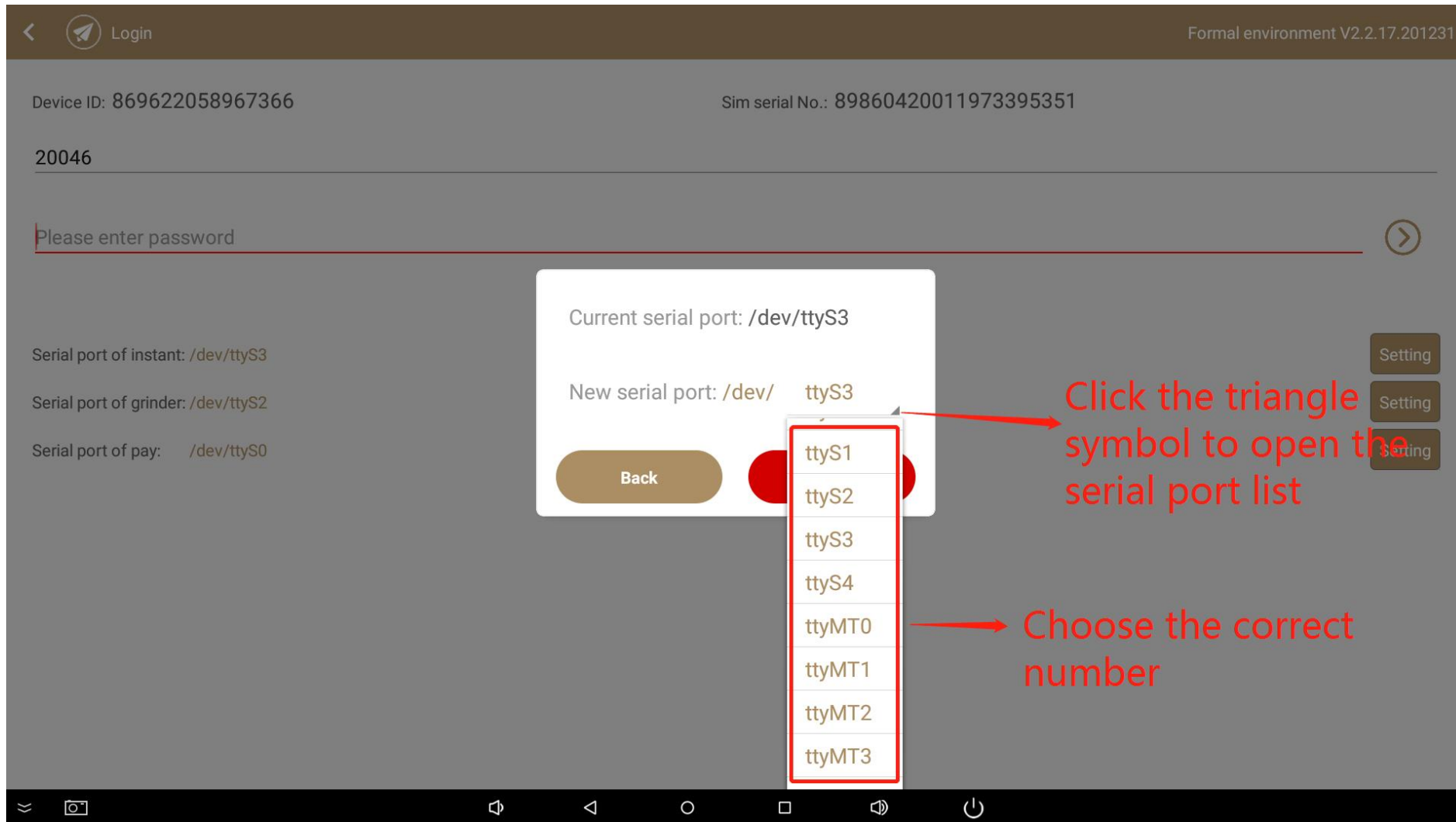


4.3.1.2、Modify serial port number

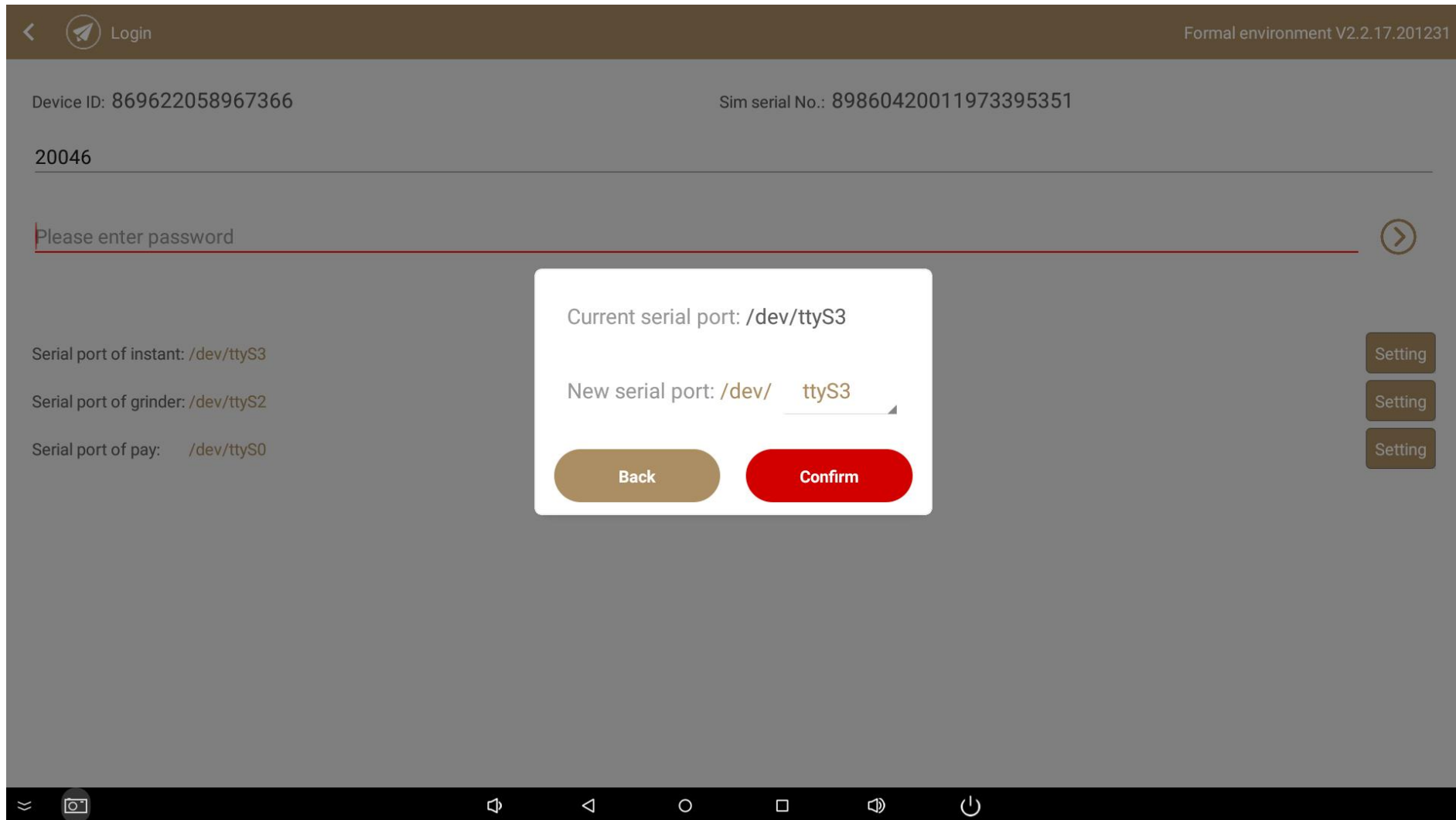


First enter the Setting interface, then click the "Logout" button, and finally click the "Confirm" button

4.3.1.3、Modify serial port number



4.3.1.4、Modify serial port number



4.3.1.5、Modify serial port number

The screenshot shows a mobile application interface for a login screen. At the top, there is a header with a back arrow, a 'Login' button, and the text 'Formal environment V2.2.17.201231'. Below the header, the screen displays 'Device ID: 869622058967366' and 'Sim serial No.: 89860420011973395351'. The main content area has a text input field containing '20046' with a red arrow pointing to it and the instruction '2、 Please enter your account'. Below this is another text input field containing 'Please enter password' with a red arrow pointing to it and the instruction '3、 Please enter your own password'. To the right of the password field is a circular arrow icon with a red arrow pointing to it and the instruction '4、 Click to log in'. On the right side of the screen, there are three 'Setting' buttons stacked vertically. On the left side, a red box highlights a list of serial port information: 'Serial port of instant: /dev/ttyS3', 'Serial port of grinder: /dev/ttyS2', and 'Serial port of pay: /dev/ttyS0'. A red arrow points from this box to the instruction '1、 Please take a picture of the serial port number and save it' at the bottom of the screen. The bottom of the screen shows a standard Android navigation bar.

Device ID: 869622058967366 Sim serial No.: 89860420011973395351

20046 → 2、 Please enter your account

Please enter password → 3、 Please enter your own password

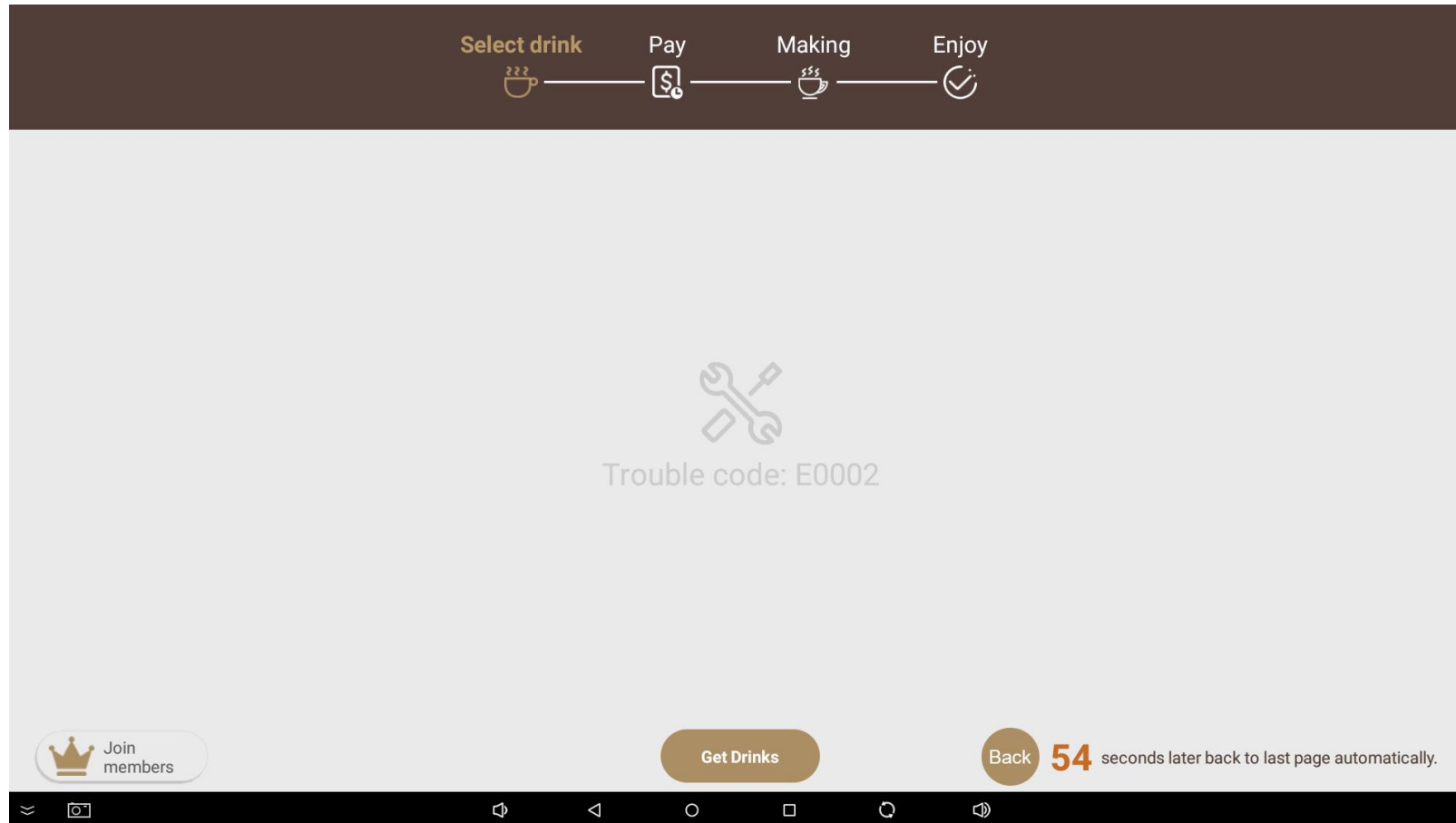
4、 Click to log in

Serial port of instant: /dev/ttyS3
Serial port of grinder: /dev/ttyS2
Serial port of pay: /dev/ttyS0

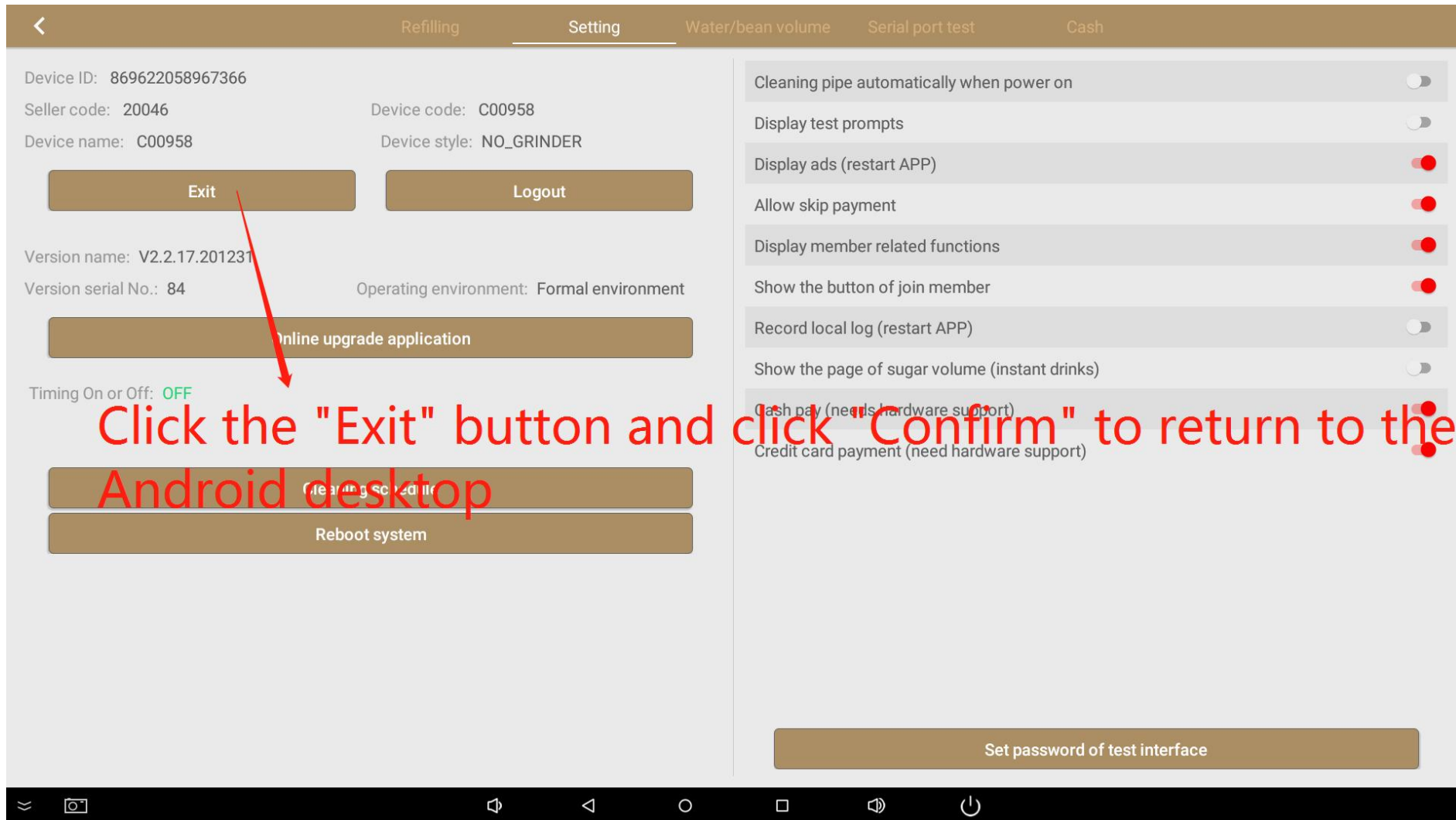
1、 Please take a picture of the serial port number and save it

4.4、Fault code E0002

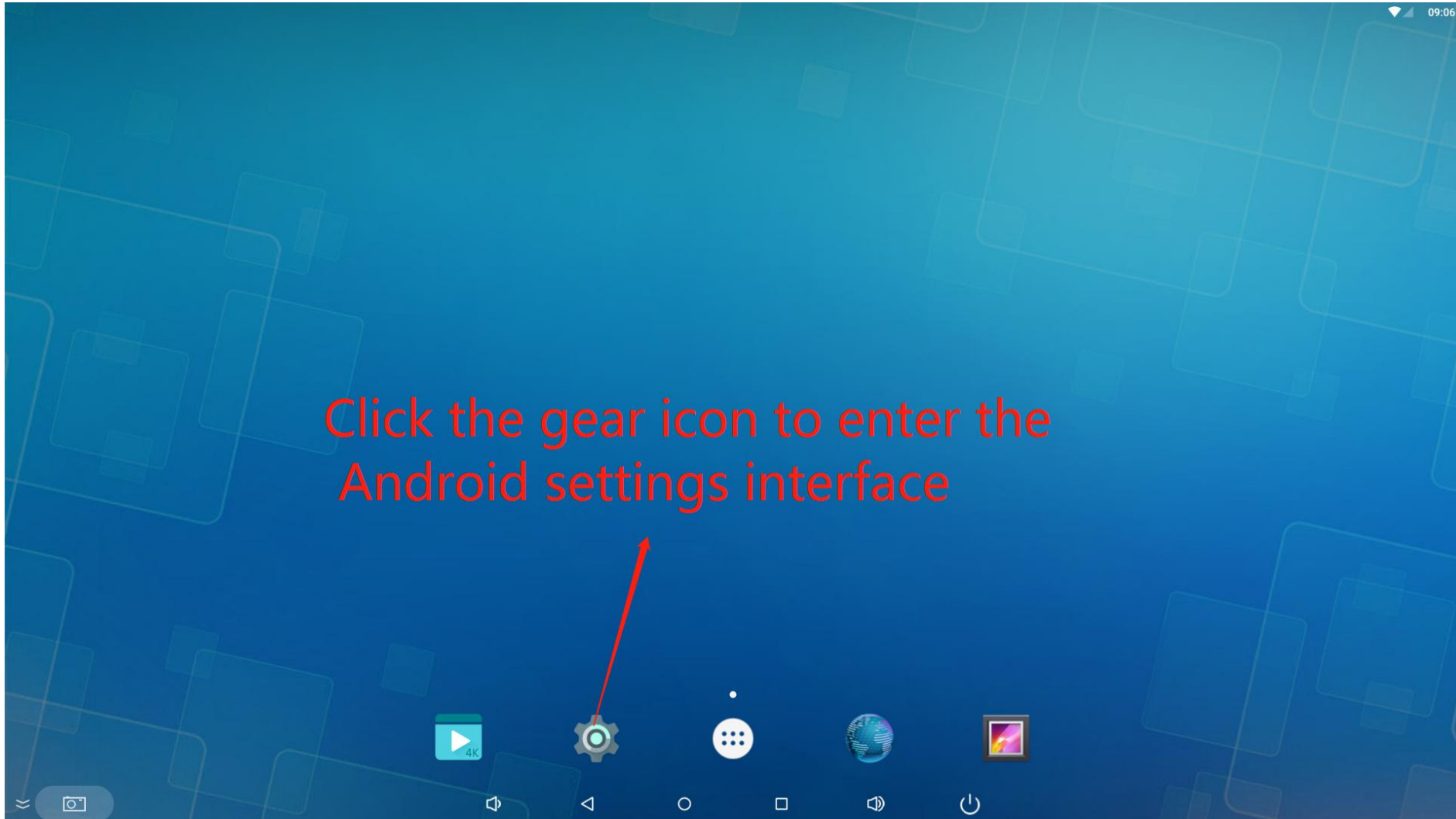
- E0002 represents back-office management fee arrears,
- please contact the sales manager for processing



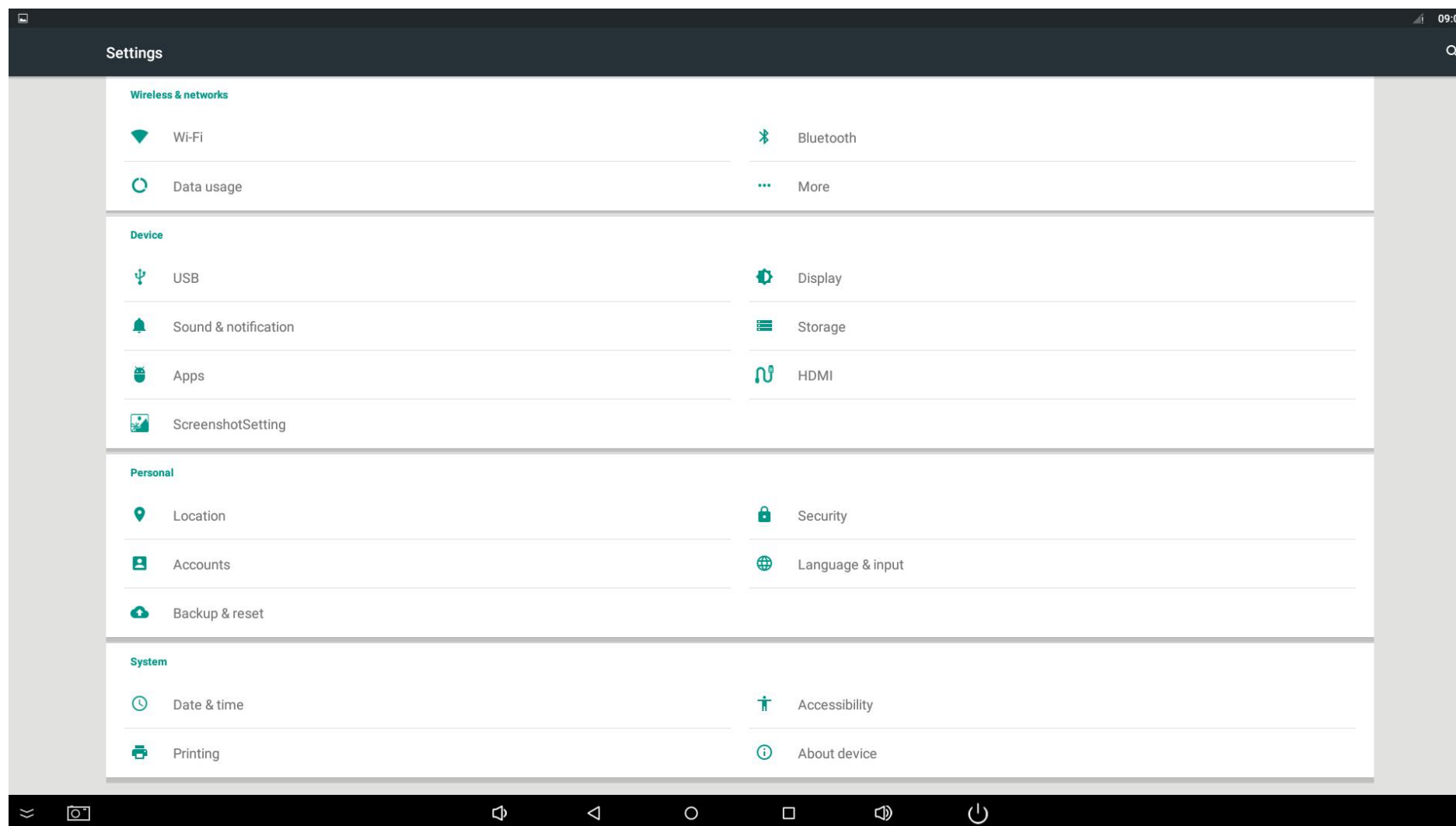
4.5.1、Turn on the wifi function



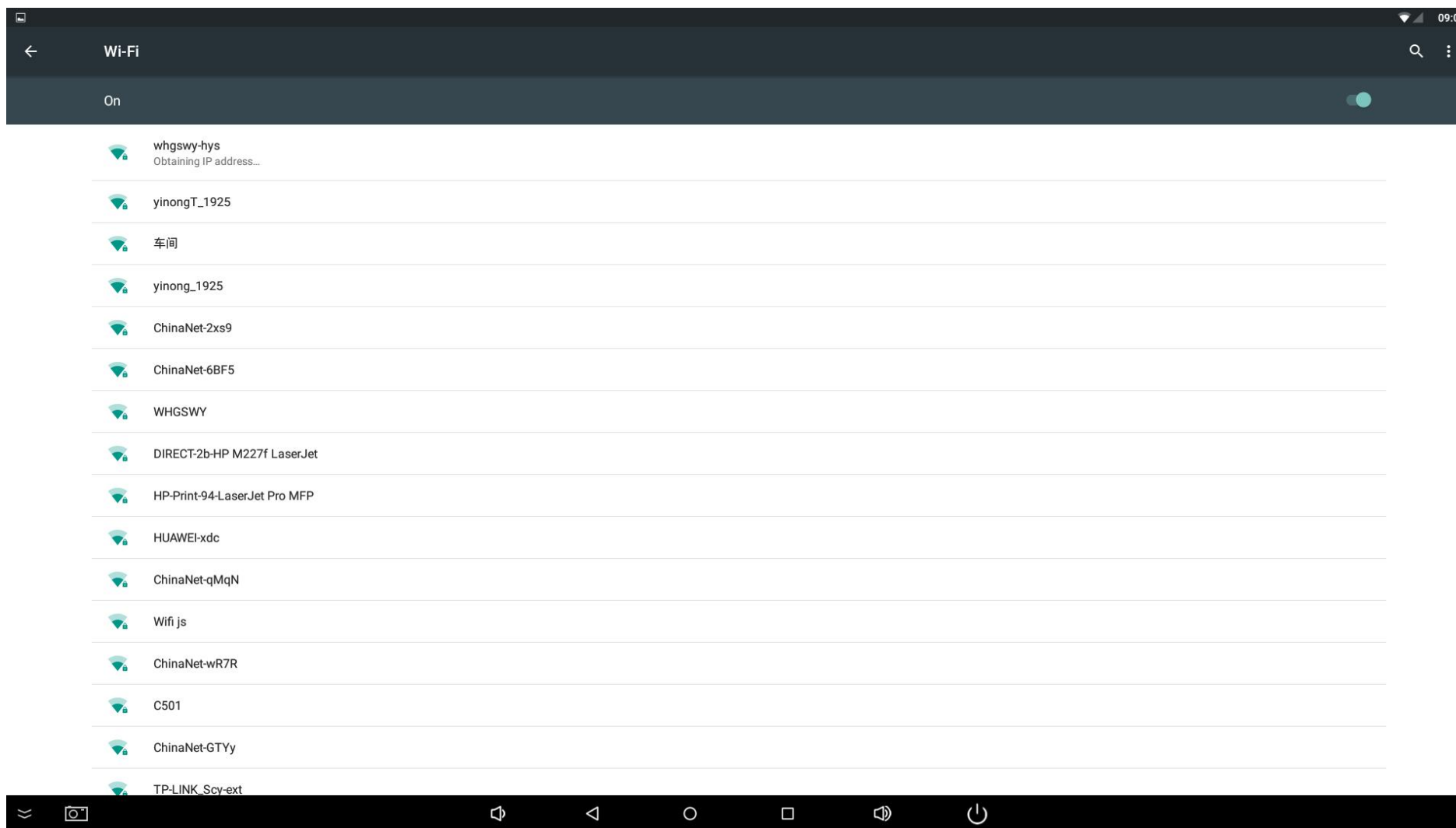
4.5.1.2、 Turn on the wifi function



4.5.1.3、 Turn on the wifi function



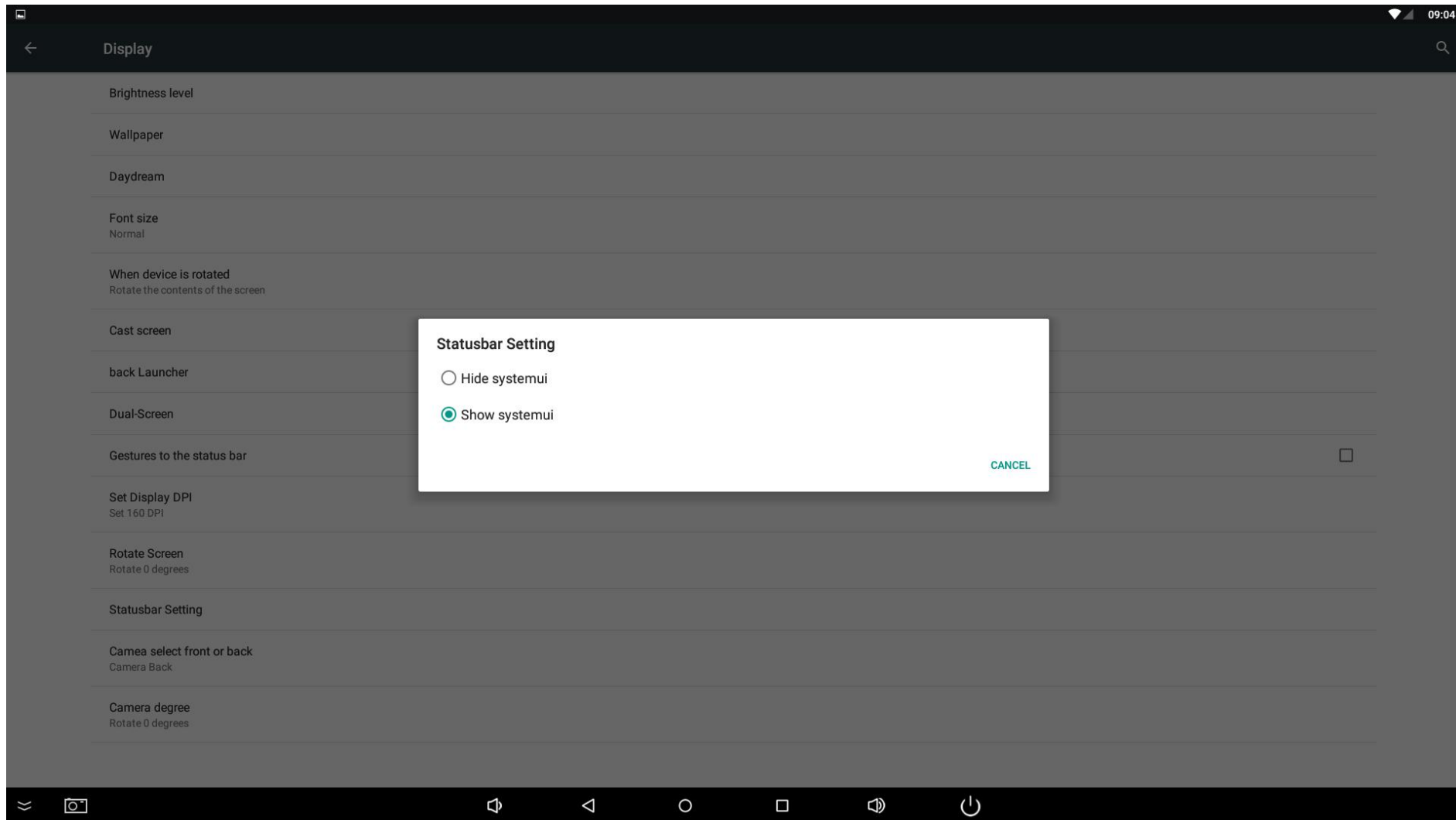
4.5.1.4、 Turn on the wifi function



4.5.2.1、Open and close the status bar



4.5.2.2、Open and close the status bar



5、 After-sales service

- Our working hours :
 - Working day 8:00 —— 17:30
- Contact information :
 - whatsapp : 18971011161

THANKS !