

INNOVATION FOR VET LIGHTING

YOUR COMPLETE VETERINARY SUPPLY AND SUPPORT SOLUTION

vet Catalogue

The MICARE Animal Health team is dedicated to selling first class electrosurgery products and offering affordable solutions for use in veterinarians' exam rooms, surgery suites or mobile clinics.

MICARE ANIMAL HEALTH
PN: 202405



Nanchang Micare Medical Equipment Co.,Ltd
No.666 Yaohu West 5h Road, Hi-tech zone, Nanchang, Jiangxi, China
www.micare-med.com / www.ledoperatinglamp.com

PRODUCTS CONTENT

Lighting For Veterinary Medicine Solutions
For Hospitals And Clinic

vet | JD1700

JD1700 Series Minor Surgery Lights

vet | FLOWER LED

Flowerled Operating Lights

You Have a Passion For Animals, We Have a
Passion For Great Lighting

vet | JD1800

JD1800 Series Minor Surgery Lights

vet | MAX-LED

MAX-LED Operating Lights

While You Quality Take Care Of Your Animals,
We Take Care Of You Optimal Lighting Is A Very Important

vet | MULTI-COLOR
LED

Multi-Color LED Operating Lights

vet | EXAMINATION
LIGHTS

Micare LED Examination Lights

Micare Animal Supports Continued Professional Development
Imparting Knowlefge Of The Latest Developments In The Field To
Veterianry Professionals Throught Hih Powered Seminars

vet | POWER LED

Powerled Operating Lights

vet | MEDICAL
HEADLIGHTS

Micare LED Medical Headlights



Reliable and safe

to simplify the everyday by specialists
Reliable surgical lighting is essential in clinics and Medical practices indispensable. The examination lights of MICARE make everyday work easier for examinations as well as in the preparation for the operation.

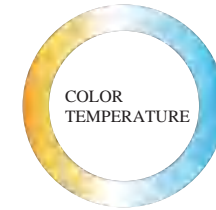
The JD1700 LED Procedure Lamp delivers 100,000 LUX of high-intensity illumination to perform minor procedures and examinations with accuracy. The light weight and compact design make it easy to position the fixture for maximal efficiency. So you can stay focused on the task at hand.

Benefits for your

environmental balance
For everyone who is already thinking about tomorrow today JD1700 the light of choice. simply because they not only provide optimal wound field illumination

JD1700 Minor Surgery Light

JD1700 performance technology in a improve design of dome that have already meet the expectations of many vet surgeons.



Color temperature of 5,000K and a CRI of 96+ provide excellent color accuracy to distinguish between tissues

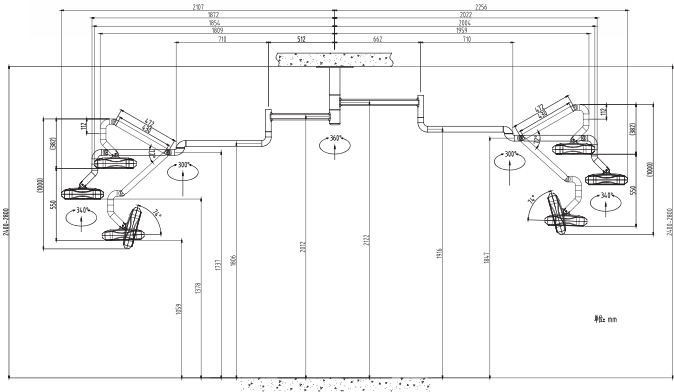
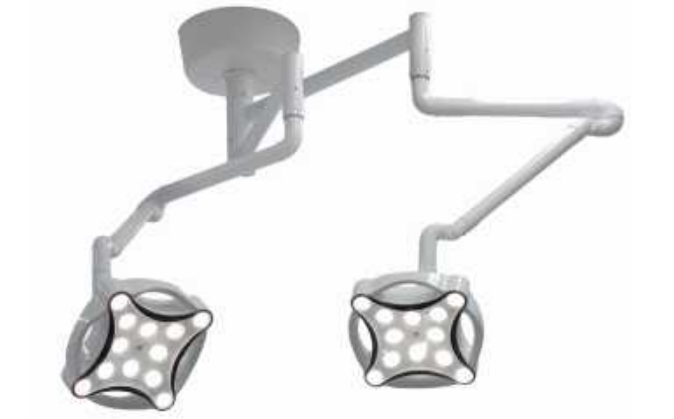


functional and ergonomic design with reliable longer life time 80,000hrs



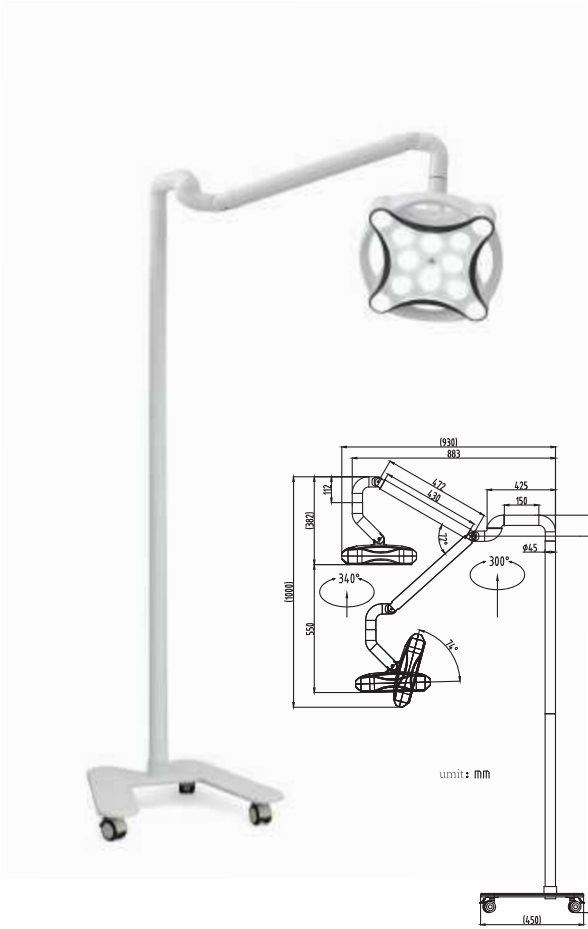
easy handling and light weight for comfortable positioning with sensor control





TECHNICAL DATA SHEET JD1700 DOUBLE CEILING MOUNT

Voltage Supply	95-245V~50/60Hz
Power	30W
Light Intensity at EC (1M)	100,000Lux Maximum
Intensity Control	Manully / Sensor Control
LED Quantity	12PCS Whie LEDS
Light Facula Diameter	130-180MM
Color temperature	4,500 - 5,000K (±500K)
Lamp head diameter	370MM
LED Life Span	80, 000hrs
CRI (R1-R13)	≥96
CRI (R9)	≥93
LED Bulb Size	37MM

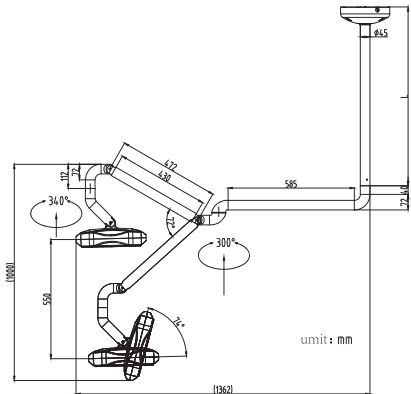


TECHNICAL DATA SHEET JD1700 PORTABLE FLOOR

Voltage Supply	95-245V~50/60Hz
Power	30W
Light Intensity at EC (1M)	100,000Lux Maximum
Intensity Control	Manully / Sensor Control
LED Quantity	12PCS Whie LEDS
Light Facula Diameter	130-180MM
Color temperature	4,500 - 5,000K (±500K)
Lamp head diameter	370MM
LED Life Span	80, 000hrs
CRI (R1-R13)	≥96
CRI (R9)	≥93
LED Bulb Size	37MM
Battery Back Up	6 - 8HRS (Optional)

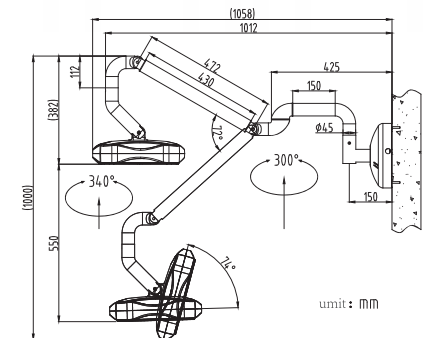
TECHNICAL DATA SHEET JD1700 SINGLE CEILING MOUNT

Voltage Supply	95-245V~50/60Hz
Power	30W
Light Intensity at EC (1M)	100,000Lux Maximum
Intensity Control	Manully / Sensor Control
LED Quantity	12PCS Whie LEDS
Light Facula Diameter	130-180MM
Color temperature	4,500 - 5,000K (±500K)
Lamp head diameter	370MM
LED Life Span	80, 000hrs
CRI (R1-R13)	≥96
CRI (R9)	≥93
LED Bulb Size	37MM



TECHNICAL DATA SHEET JD1700 WALL MOUNTED

Voltage Supply	95-245V~50/60Hz
Power	30W
Light Intensity at EC (1M)	100,000Lux Maximum
Intensity Control	Manully / Sensor Control
LED Quantity	12PCS Whie LEDS
Light Facula Diameter	130-180MM
Color temperature	4,500 - 5,000K (±500K)
Lamp head diameter	370MM
LED Life Span	80, 000hrs
CRI (R1-R13)	≥96
CRI (R9)	≥93
LED Bulb Size	37MM



MICARE JD1800 SERIES

LED technology has revolutionized the art of equipment design for the medical

MICARE brings this innovative technology to the procedure & exam area. With its advanced thermal management system, integrated dimming controls, brilliant light output, and compact housing, MICARE meets the stringent requirements of both hospital designers and practitioners. sector.



JD1800 SERIES

Ease Of Use

Ergonomic sterilization handle for an easy movement of the light , Smooth moving, long-reach arms combined with 270° rotation ensure that light is available from the head

Highest lighting quality

Thanks to a concave lighting head design, diamond optics and premium LEDs, homogeneous light field and high illuminance with 120,000lux in dimming 9 levels low shadowing, excellent color rendering (Ra > 96, R13 > 93)

Ideal colour reproduction

With a colour temperature of 3,800 - 5,300 K in 9 steps, the Micare JD1800 provides natural white with warm yellow light. This is both comfortable to the eye of the surgeon and allows best tissue definition.

Highest lighting quality

MICARE JD1800 employs highly developed optics, based on the principle of total internal reflection with an integrated Fresnel structure. This optimally directed light provides the user with an excellent depth of illumination. Absence of shadows, reflections and glare ensure safe working.

LUMINAIRE BODY:

Polycarbonate & acrylonitrile-butadiene-styrene copolymer (PC & ABS)
Lens Cover: Polymethyl methacrylate (PMMA) An ABR-GL protective coating makes the lens cover scratch proof.

CLEANING AND STERILIZATION

Its closed construction and smooth surface allows for quick, thorough cleaning. In addition, any penetration of dust, dirt or liquids is prevented. The removable handle is easy to sterilize.

- Removable and sterilizable handle
- Closed construction protects mechanics



GLARE-FREE

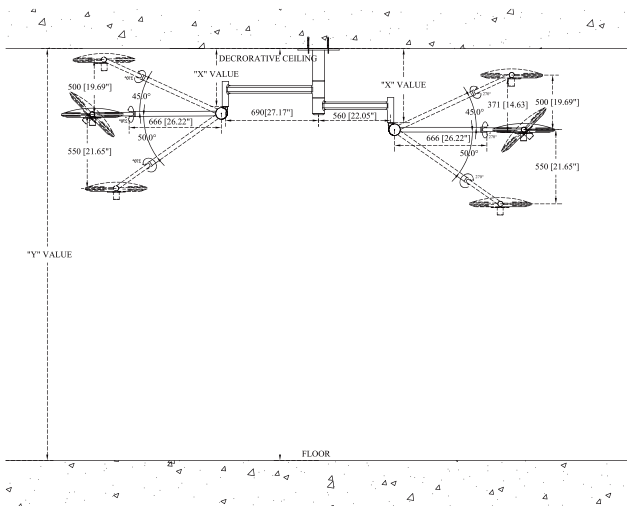
The light beam is focused and glare-free whatever the angle of sight. This avoids bothersome reflections on the surface.

- Dimmable from 100% – 10%
- 120,000 lux/39.5in (1m)
- Illuminated area 6.5in (160mm)
- CRI > 95
- Glare-, shadow- and reflection-free

NO RADIATION OF HEAT

An ideal working environment for a physician during a procedure includes clear, glare-free light with almost no infrared or UV radiation. Not only does this add to the comfort of the physician, staff and patient, but also prevents tissue from drying out or being affected by the heat, a genuine concern to the provider.

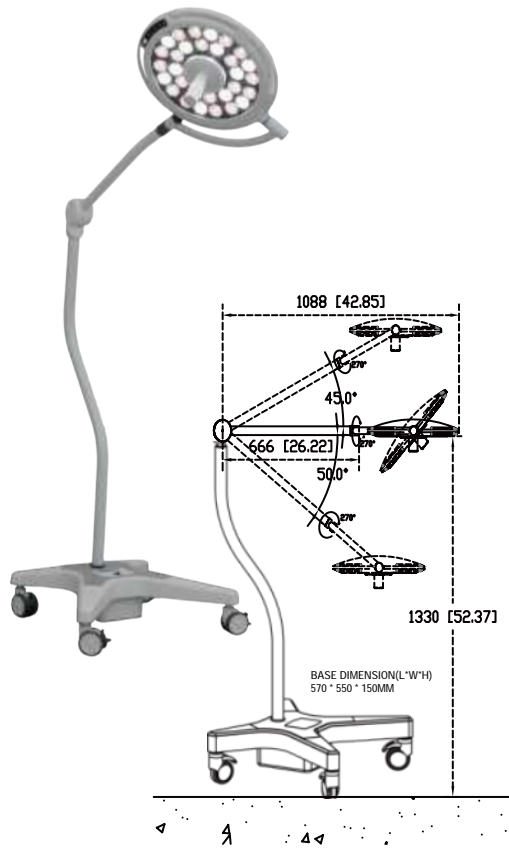




TECHNICAL DATA SHEET

JD1800 DOUBLE CEILING MOUNTY

Voltage Supply	95-245V~50/60Hz
Power	30W
Light Intensity at EC (1M)	120,000Lux Maximum
Intensity Control	9 Steps
LED Quantity	30PCS (12PCS White + 18PCS Yellow)
Light Facula Diameter	Ø 160 - 250MM
Color temperature	3,800 - 5,500K (9Steps Control)
Digital Switch	LCD Touch Screen
Lamp head diameter	410MM
LED Life Span	80,000Hrs (osram Brand)
CRI (R1-R13)	≥96
CRI (R9)	≥93
Ultra Thin Thickness Of Lamp Head	65MM
Working Distance	650 - 1800MM
Body Material	Aluminum
LED Bulb Size	35MM / PC
Illumination Depth at 60%	700MM
Illumination Depth At 20%	1100MM
Certification Approved	CE MDR2017/745, ISO9001, ISO13485, FDA,EN 60601-1, EN 60601-2-41
Standard With "Autoclave Sterilization Handle"	



TECHNICAL DATA SHEET

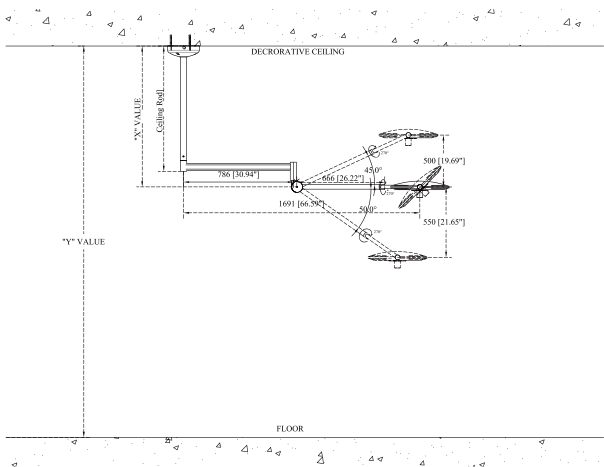
JD1800L PORTABLE

Voltage Supply	95-245V~50/60Hz
Power	30W
Light Intensity at EC (1M)	120,000Lux Maximum
Intensity Control	9 Steps
LED Quantity	30PCS (12PCS White + 18PCS Yellow)
Light Facula Diameter	Ø 160 - 250MM
Color temperature	3,800 - 5,500K (9Steps Control)
Digital Switch	LCD Touch Screen
Lamp head diameter	410MM
LED Life Span	80,000Hrs (osram Brand)
CRI (R1-R13)	≥96
CRI (R9)	≥93
Ultra Thin Thickness Of Lamp Head	65MM
Working Distance	650 - 1800MM
Body Material	Aluminum
LED Bulb Size	35MM / PC
Illumination Depth at 60%	700MM
Illumination Depth At 20%	1100MM
Certification Approved	CE MDR2017/745, ISO9001, ISO13485, FDA,EN 60601-1, EN 60601-2-41
Standard With "Autoclave Sterilization Handle"	

TECHNICAL DATA SHEET

JD1800 SINGLE CEILING MOUNTY

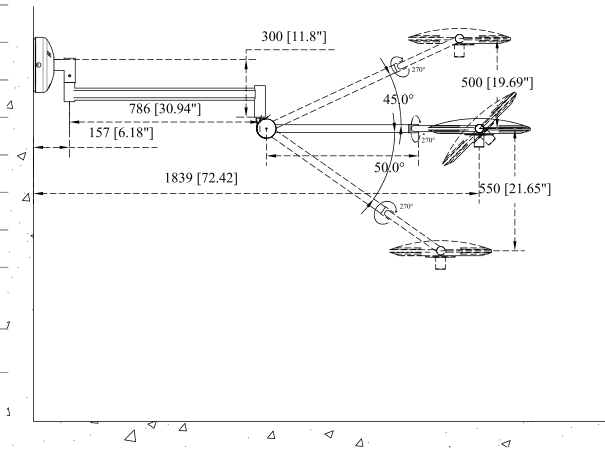
Voltage Supply	95-245V~50/60Hz
Power	30W
Light Intensity at EC (1M)	120,000Lux Maximum
Intensity Control	9 Steps
LED Quantity	30PCS (12PCS White + 18PCS Yellow)
Light Facula Diameter	Ø 160 - 250MM
Color temperature	3,800 - 5,500K (9Steps Control)
Digital Switch	LCD Touch Screen
Lamp head diameter	410MM
LED Life Span	80,000Hrs (osram Brand)
CRI (R1-R13)	≥96
CRI (R9)	≥93
Ultra Thin Thickness Of Lamp Head	65MM
Working Distance	650 - 1800MM
Body Material	Aluminum
LED Bulb Size	35MM / PC
Illumination Depth at 60%	700MM
Illumination Depth At 20%	1100MM
Certification Approved	CE MDR2017/745, ISO9001, ISO13485, FDA,EN 60601-1, EN 60601-2-41
Standard With "Autoclave Sterilization Handle"	



TECHNICAL DATA SHEET

JD1800G WALL MOUNT

Voltage Supply	95-245V~50/60Hz
Power	30W
Light Intensity at EC (1M)	120,000Lux Maximum
Intensity Control	9 Steps
LED Quantity	30PCS (12PCS White + 18PCS Yellow)
Light Facula Diameter	Ø 160 - 250MM
Color temperature	3,800 - 5,500K (9Steps Control)
Digital Switch	LCD Touch Screen
Lamp head diameter	410MM
LED Life Span	80,000Hrs (osram Brand)
CRI (R1-R13)	≥96
CRI (R9)	≥93
Ultra Thin Thickness Of Lamp Head	65MM
Working Distance	650 - 1800MM
Body Material	Aluminum
LED Bulb Size	35MM / PC
Illumination Depth at 60%	700MM
Illumination Depth At 20%	1100MM
Certification Approved	CE MDR2017/745, ISO9001, ISO13485, FDA,EN 60601-1, EN 60601-2-41
Standard With "Autoclave Sterilization Handle"	



MULTI-COLOR LED PLUS LED OPERATING LIGHTS

Multi-Color LED surgical Light technology and provides excellent illumination. It meets the requirements of different animal surgeries, Multi-Color LED surgical Light technology and provides excellent illumination. It meets the requirements of different animal surgeries

The entire structure has been designed and grant absolute maneuverability. Multi-Color, in contrast with all the other products of the vet series, is not particularly intended for a veterinary use, yet, because of its unmatched characteristics has already made itself a name among vet practitioners.

This peculiarity turns into a better shadow control. Furthermore, Multi-Color LED Light displays a series of characteristics intended to decisively support the surgeon and his equipment.



4.3" LCD Touch Screen Optional



10INCHES TABLET PC WALL CONTROL

SYNC CONTROL LED OPERATING LIGHT FUNCTIONS



Back-up Battery Optional (24V12.2AH)
Over Voltage Detection
Under Voltage Detection
Discharging Over Current Detection
Short Circuit Detection-
Battery Power Digital Disply
Life cycle : 800 cycle (charge/discharge)
Working Time : 8-10 Hours, Charging Time: 4Hrs



Not just meeting quality standards, but exceeding them



At a glance: the evoLight product portfolio
We are the only manufacturer worldwide to offer our surgical lights with lens or reflector technology.



In addition to the large variety of sizes, evonos can realize solutions for individual customer requirements. A wide range of accompanying systems rounds off our portfolio. Discover the (almost) unlimited options for yourself on the following pages



Smooth housing contours including aerodynamic flow characteristics

With a housing height of only 55 mm, evonos surgical lights are one of the most slimline on the market. Our flow-optimized design supports laminar air flow systems, thus enabling low-turbulence flow in the operating theater.



DESIGN
Sleek design
Small light head
Easy positioning



THERMAL MANAGEMENT
Temperature at the rear surface of the light head <1°C



HANDLE
Sterilisable handle



INTERFACE
Intuitive control panel
Wall panel
Handles on the light head



COLOUR CODING
The light system and the wall panel are colour-coded for easier identification



CAMERA
High-quality HD camera integrated into the light head
120x zoom, 1920*1080P transmission of video signal



LIGHT INTENSITY
MICARE E700: 60,000 - 200,000LUX
MICARE E500: 40,000 - 160,000LUX
ENDO LIGHT: 10%
Average Life Span Of Leds: 80,000Hrs



COLOUR TEMPERATURE
3,500 - 5,700K Widely adjustable



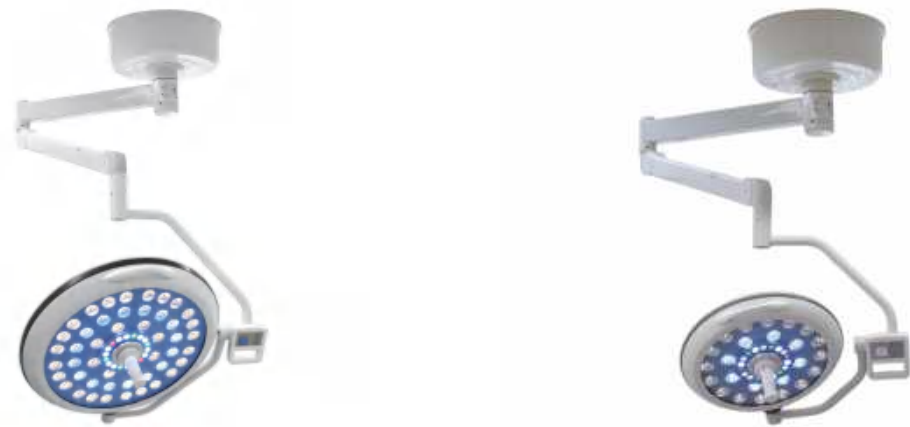
LIGHT FIELD DIAMETER
The light field can be adjusted incrementally to give perfect illumination



DESIGN
Sleek design
Small light head
Easy positioning



TECHNICAL DATA SHEET		DOUBLE CEILING MOUNTED	
Model No	E700/700	E700/500	E500/500
Voltage	95V - 245V , 50/60HZ	95V - 245V , 50/60HZ	95V - 245V , 50/60HZ
Light Intensity At EC	200,000 / 200,000Lux in Max	200,000 / 160,000Lux in Max	160,000 / 160,000Lux in Max
Lamp Head Diameter	700 / 700MM	700 / 500MM	500 / 500MM
Quantity Of LEDS	66 / 66PCS	66 / 42PCS	42 / 42PCS
Color Temperature Range	3,000 - 5,700K	3,000 - 5,700K	3,000 - 5,700K
Color rendering index (RA)	96	96	96
Color rendering index (R9)	98	98	98
Focusable light field size	15-28CM / 15-28CM	15-28CM / 18-26CM	18-26CM / 18-26CM
Endoscopy Mode Lighting	18PCS / 18PCS (Green + Red Balance)	18PCS / 18PCS (Green + Red Balance)	18PCS / 18PCS (Green + Red Balance)
LED service life Span	80,000Hrs	80,000Hrs	80,000Hrs
Depth of illumination L1+L2	1600MM	1500MM	1400MM
Temperature increase in head area	1 C	1 C	1 C
Back Up Battery (8-10hrs)	Optional	Optional	Optional
"Internal/External Sony Camera (20X) + 22Inches Monitor + 3rd Arm"	Optional	Optional	Optional



TECHNICAL DATA SHEET		SINGLE CEILING MOUNTED	
Model No	E700	E500	
Voltage	95V - 245V , 50/60HZ	95V - 245V , 50/60HZ	
Light Intensity At EC	200,000Lux in Max	160,000Lux in Max	
Lamp Head Diameter	700MM	500MM	
Quantity Of LEDS	66PCS	42PCS	
Color Temperature Range	3,000 - 5,700K	3,000 - 5,700K	
Color rendering index (RA)	96	96	
Color rendering index (R9)	98	98	
Focusable light field size	15-28CM	18-26CM	
Endoscopy Mode Lighting	18PCS(Green + Red Balance)	18PCS (Green + Red Balance)	
LED service life Span	80,000Hrs	80,000Hrs	
Depth of illumination L1+L2	1500MM	1400MM	
Temperature increase in head area	1 C	1 C	
Back Up Battery (8-10hrs)	Optional	Optional	
"Internal/External Sony Camera (20X) + 22Inches Monitor + 3rd Arm"	Optional	Optional	



TECHNICAL DATA SHEET		PORTABLE FLOOR	
Model No	E700L	E500L	
Voltage	95V - 245V , 50/60HZ	95V - 245V , 50/60HZ	
Light Intensity At EC	200,000Lux in Max	160,000Lux in Max	
Lamp Head Diameter	700MM	500MM	
Quantity Of LEDS	66PCS	42PCS	
Color Temperature Range	3,000 - 5,700K	3,000 - 5,700K	
Color rendering index (RA)	96	96	
Color rendering index (R9)	98	98	
Focusable light field size	15-28CM	18-26CM	
Endoscopy Mode Lighting	18PCS(Green + Red Balance)	18PCS (Green + Red Balance)	
LED service life Span	80,000Hrs	80,000Hrs	
Depth of illumination L1+L2	1500MM	1400MM	
Temperature increase in head area	1 C	1 C	
Back Up Battery (8-10hrs)	Optional	Optional	
"Internal/External Sony Camera (20X) + 22Inches Monitor + 3rd Arm"	Optional	Optional	



TECHNICAL DATA SHEET		WALL MOUNTED	
Model No	E700G	E500G	
Voltage	95V - 245V , 50/60HZ	95V - 245V , 50/60HZ	
Light Intensity At EC	200,000Lux in Max	160,000Lux in Max	
Lamp Head Diameter	700MM	500MM	
Quantity Of LEDS	66PCS	42PCS	
Color Temperature Range	3,000 - 5,700K	3,000 - 5,700K	
Color rendering index (RA)	96	96	
Color rendering index (R9)	98	98	
Focusable light field size	15-28CM	18-26CM	
Endoscopy Mode Lighting	18PCS(Green + Red Balance)	18PCS (Green + Red Balance)	
LED service life Span	80,000Hrs	80,000Hrs	
Depth of illumination L1+L2	1500MM	1400MM	
Temperature increase in head area	1 C	1 C	
Back Up Battery (8-10hrs)	Optional	Optional	
"Internal/External Sony Camera (20X) + 22Inches Monitor + 3rd Arm"	Optional	Optional	

Power LED for Optimal lighting is a very important component in the everyday operation of a veterinary facility.

The meticulous calibration of the lamp's weights guarantees the stability of the light-head and prevents from any unwanted movements. The easiness to move allows the product to be used by the surgeon himself, without the need for any further assistance which might not be always available.

PowerLED and its medical division, offer premium quality materials, meticulous work-manship and state of the art design. Our products are held to the highest standards and have become synonymous with the exceptional Swiss level of quality



vet | **POWER LED**

What if you had a lighting system that was modular, upgradeable, and expandable so that it could meet your ongoing needs with ease? You've found it. There are ways to customize this system today and in the future.

All of us here at MICARE are committed to you



Future-ready to evolve with you

Redefine optical performance Aerospace-based design

How can you deliver more clean airflow to your animal during a surgical procedure? The Osram Power LED allows unobstructed flow of clean air through the lighthouse to dissipate accumulated heat and surgical smoke. Working seamlessly with laminar airflow solutions, it decreases air turbulence through its unique airfoil design. Aerospace-based design, We've learned from the best in the aerospace industry for a design that mitigates airflow turbulence while delivering clean air to the animal

Lightweight aluminum construction
The suspension weights approximately
30% less than previous generations
of steel arms.



You Focus on Animals. We Focus on You.

Micare Lighting Solution bring together animal and human technology so That you Have Exactly that you need, when you need it, for the intelligent operation room of today and tomorrow. From project design to implementation to service support, your success is out highest priority

**LIGHTING
EXPERIENCE**



TECHNICAL DATA SHEET			
Model	E700/700	E700/500	E500/500
Voltage	95-245V, 50/60HZ	95-245V, 50/60HZ	95-245V, 50/60HZ
Light Intensity at 1m (EC)	180,000 / 180,000Lux In Max	180,000 / 160,000Lux In Max	160,000 / 160,000Lux In Max
Lamp Head Diameter	700 / 700MM	700 / 500MM	500 / 500MM
LED Bulb Quantity	80 / 80PCS	80 / 48PCS	48 / 48PCS
Color temperature Range	3,800 -5,500K	3,800 -5,500K	3,800 -5,500K
Color rendering index Ra	96	96	96
Color rendering index R9	98	98	98
Focusable Light Field (Electronic Control)	150-350 / 150-350MM	150-350 / 120-280MM	120-280 / 120-280MM
Endo Ambient Lights	White Ambient Leds	White Ambient Leds	White Ambient Leds
"Depth of illumination	1400MM	1300MM	1200MM
(L1+L2) @ 20 %"	750MM	700MM	650MM
"Depth of illumination	OPTIONAL	OPTIONAL	OPTIONAL
(L1+L2) @ 60 %"	OPTIONAL	OPTIONAL	OPTIONAL
4.3" TFT LCD Touch Screen Battery Back Up (6-8HRS)	OPTIONAL	OPTIONAL	OPTIONAL
Internal Sony Camera 20X +22Inches Monitor + 3rd Arm			



TECHNICAL DATA SHEET		
Model	E700	E500
Voltage	95-245V, 50/60HZ	95-245V, 50/60HZ
Light Intensity at 1m (EC)	180,000 In Max	180,000 In Max
Lamp Head Diameter	700MM	500MM
LED Bulb Quantity	80PCS	48PCS
Color temperature Range	3,800 -5,500K	3,800 -5,500K
Color rendering index Ra	96	96
Color rendering index R9	98	98
Focusable Light Field (Electronic Control)	150-350MM	120-280MM
Endo Ambient Lights	White Ambient Leds	White Ambient Leds
"Depth of illumination	1500MM	1400MM
(L1+L2) @ 20 %"	750MM	700MM
"Depth of illumination	OPTIONAL	OPTIONAL
(L1+L2) @ 60 %"	OPTIONAL	OPTIONAL
4.3" TFT LCD Touch Screen Battery Back Up (6-8HRS)	OPTIONAL	OPTIONAL
Internal Sony Camera 20X +22Inches Monitor + 3rd Arm		



TECHNICAL DATA SHEET		
Model	E700L	E500L
Voltage	95-245V, 50/60HZ	95-245V, 50/60HZ
Light Intensity at 1m (EC)	180,000 In Max	180,000 In Max
Lamp Head Diameter	700MM	500MM
LED Bulb Quantity	80PCS	48PCS
Color temperature Range	3,800 -5,500K	3,800 -5,500K
Color rendering index Ra	96	96
Color rendering index R9	98	98
Focusable Light Field (Electronic Control)	150-350MM	120-280MM
Endo Ambient Lights	White Ambient Leds	White Ambient Leds
"Depth of illumination	1400MM	1300MM
(L1+L2) @ 20 %"	750MM	700MM
"Depth of illumination	OPTIONAL	OPTIONAL
(L1+L2) @ 60 %"	OPTIONAL	OPTIONAL
4.3" TFT LCD Touch Screen Battery Back Up (6-8HRS)	OPTIONAL	OPTIONAL
Internal Sony Camera 20X +22Inches Monitor + 3rd Arm		



TECHNICAL DATA SHEET		
Model	E700G	E500G
Voltage	95-245V, 50/60HZ	95-245V, 50/60HZ
Light Intensity at 1m (EC)	180,000 In Max	180,000 In Max
Lamp Head Diameter	700MM	500MM
LED Bulb Quantity	80PCS	48PCS
Color temperature Range	3,800 -5,500K	3,800 -5,500K
Color rendering index Ra	96	96
Color rendering index R9	98	98
Focusable Light Field (Electronic Control)	150-350MM	120-280MM
Endo Ambient Lights	White Ambient Leds	White Ambient Leds
"Depth of illumination	1500MM	1400MM
(L1+L2) @ 20 %"	750MM	700MM
"Depth of illumination	OPTIONAL	OPTIONAL
(L1+L2) @ 60 %"	OPTIONAL	OPTIONAL
4.3" TFT LCD Touch Screen Battery Back Up (6-8HRS)	OPTIONAL	OPTIONAL
Internal Sony Camera 20X +22Inches Monitor + 3rd Arm		



This design makes of Flowerled in a specially designed technology for laminar air flow systems.

vet | FLOWER LED

FLOWER LED is the only available lighting solution purposely conceived, designed and manufactured for veterinary purposes

Conscious of the many differences to human surgical lighting both in terms of design and use, engineers spent their efforts to come up with this ultimate solution. FlowerLED Light stands as the only available lighting solution purposely conceived, designed and manufactured for veterinary purposes.

The use of FlowerLED always on focus” technology, makes it possible to have a focalized light at any distance. The surgeon can thus freely move the light within the working range distance and the light would,always be on focus.

The smoothness and flexibility encountered by the surgeon in maneuvering the light is made possible by an ad hoc arm structure specifically designed and manufactured by FlowerLED



Brighten your Expertise

FLOWER LED surgical lighting with adjustable colour temperatures retains all the benefits of white LEDs while offering additional functions. Selecting from 4 calibrated colour temperatures, the user can choose a light adapted to their visual sensitivity and preferences - warmer colours aiming towards orange, or cooler tones, aiming towards warm white. Depending on the type of surgery, the surgical team can easily adapt the color

Closed and smooth shell contours
The entire surface of the case is smooth: anti-abrasive, easy to clean and resistant to disinfectants. All the elements
They are assembled without sutures or external screw joints.
Flowerled has IP55 certification, for protection
Complete against internal deposits of dust and humidity.

Real glass light-emitting surface
FLOWERLED has a single-pane safety glass, which guarantees high resistance to breaks, impacts and knocks. Additionally, it is extremely scratch resistant and supports the use of any cleaning product.

Excellent optimal aerodynamic properties:
prevents air turbulence
Optimized design of the outer shape of the casing
Flowerled, so that the vertical air flow circulates through the lamp without causing hardly any turbulence.



TECHNICAL DATA SHEET			
Model	E700/700	E700/500	E500/500
Voltage	95-245V, 50/60HZ	95-245V, 50/60HZ	95-245V, 50/60HZ
Light Intensity at 1m (EC)	180,000 / 180,000Lux In Max	180,000 / 160,000Lux In Max	160,000 / 160,000Lux In Max
Lamp Head Diameter	650 / 650MM	650 / 650MM	650 / 650MM
LED Bulb Quantity	61 / 61PCS	61 / 39PCS	39 / 39CS
Color temperature Range	3,800 -5,500K	3,800 -5,500K	3,800 -5,500K
Color rendering index Ra	96	96	96
Color rendering index R9	98	98	98
Focusable Light Field (Electronic Control)	150-350 / 150-350MM	150-350 / 120-280MM	120-280 / 120-280MM
Endo Ambient Lights	White Ambient Leds	White Ambient Leds	White Ambient Leds
"Depth of illumination	1400MM	1300MM	1200MM
(L1+L2) @ 20 %"	750MM	700MM	650MM
"Depth of illumination	OPTIONAL	OPTIONAL	OPTIONAL
(L1+L2) @ 60 %"	OPTIONAL	OPTIONAL	OPTIONAL
3.7" TFT LCD Touch Screen Battery Back Up (6-8HRS)	OPTIONAL	OPTIONAL	OPTIONAL
Internal Sony Camera 20X +22Inches Monitor + 3rd Arm			



TECHNICAL DATA SHEET		
Model	E700	E500
Voltage	95-245V, 50/60HZ	95-245V, 50/60HZ
Light Intensity at 1m (EC)	180,000Lux In Max	160,000Lux In Max
Lamp Head Diameter	650MM	650MM
LED Bulb Quantity	61PCS	39PCS
Color temperature Range	3,800 -5,500K	3,800 -5,500K
Color rendering index Ra	96	96
Color rendering index R9	98	98
Focusable Light Field (Electronic Control)	150-350MM	120-280MM
Endo Ambient Lights	White Ambient Leds	White Ambient Leds
"Depth of illumination	1400MM	1300MM
(L1+L2) @ 20 %"	750MM	700MM
"Depth of illumination	OPTIONAL	OPTIONAL
(L1+L2) @ 60 %"	OPTIONAL	OPTIONAL
4.3" TFT LCD Touch Screen Battery Back Up (6-8HRS)	OPTIONAL	OPTIONAL
Internal Sony Camera 20X +22Inches Monitor + 3rd Arm		



TECHNICAL DATA SHEET		
Model	E700L	E500L
Voltage	95-245V, 50/60HZ	95-245V, 50/60HZ
Light Intensity at 1m (EC)	180,000 In Max	180,000 In Max
Lamp Head Diameter	700MM	500MM
LED Bulb Quantity	80PCS	48PCS
Color temperature Range	3,800 -5,500K	3,800 -5,500K
Color rendering index Ra	96	96
Color rendering index R9	98	98
Focusable Light Field (Electronic Control)	150-350MM	120-280MM
Endo Ambient Lights	White Ambient Leds	White Ambient Leds
"Depth of illumination	1500MM	1400MM
(L1+L2) @ 20 %"	750MM	700MM
"Depth of illumination	OPTIONAL	OPTIONAL
(L1+L2) @ 60 %"	OPTIONAL	OPTIONAL
4.3" TFT LCD Touch Screen Battery Back Up (6-8HRS)	OPTIONAL	OPTIONAL
Internal Sony Camera 20X +22Inches Monitor + 3rd Arm		



TECHNICAL DATA SHEET		
Model	E700G	E500G
Voltage	95-245V, 50/60HZ	95-245V, 50/60HZ
Light Intensity at 1m (EC)	180,000 In Max	180,000 In Max
Lamp Head Diameter	700MM	500MM
LED Bulb Quantity	80PCS	48PCS
Color temperature Range	3,800 -5,500K	3,800 -5,500K
Color rendering index Ra	96	96
Color rendering index R9	98	98
Focusable Light Field (Electronic Control)	150-350MM	120-280MM
Endo Ambient Lights	White Ambient Leds	White Ambient Leds
"Depth of illumination	1500MM	1400MM
(L1+L2) @ 20 %"	750MM	700MM
"Depth of illumination	OPTIONAL	OPTIONAL
(L1+L2) @ 60 %"	OPTIONAL	OPTIONAL
4.3" TFT LCD Touch Screen Battery Back Up (6-8HRS)	OPTIONAL	OPTIONAL
Internal Sony Camera 20X +22Inches Monitor + 3rd Arm		

Xtremadamente Individualizada



For MICARE, innovation means adding value to the customer. MICARE products provide a great deal of flexibility, and our numerous patents are testament to their exceptional level of technical innovation; these qualities have helped MICARE become a key company in medical technology.

Clear Visualization For Better Results Improved Beam Technology Quick and Comfortable Usage Special lens technology designed for surgical lighting fully compatible with LED, provides homogeneous light field; when the light field is changed, the light intensity does not change.

MAX-TREMELY FUNCTIONAL
You have options for operating MAX-LED. The control panel on the light for setting the main functions. You can use the touch-sensitive MAX-LED controller to adjust every parameter for your specific requirements during the operation. And even better: you can set your own "personal light", the precise light settings that you prefer. You can also control all the functions of the MAX-LED camera systems without difficulty. All completely intuitive with the self-explanatory, icon-based operation of the touch screen.

Adjustment of the properties of lighting exactly to your preferences

Maximum consistent Adaptive color temperature combined with excellent color rendering – for a very natural view. The illuminance and the color temperature can be set precisely and retained in order to create and maintain a consistent ideal light situation and mood. The color rendering index is at the top level, as impressively confirmed by the outstanding quality of the MAX-LED system.

Integrated video system. Operating lights Max-LED can be equipped with video camera, fixed in the center of the light. Optionally the lights can be delivered with standard sterile, plastic handle, to be exchanged into handle with camera in the future. Sony camera, Full 1920 x 1080/30p High Definition, adjustable from keyboard.



X EXTREMELY ADVANCED

The cost-benefit ratio of MAX-LED is extremely high. Adjustable parameters and individually storable allow conditions accurately reproducible light outputs, with consequent good surgical results. Its ease installation and maintenance also contributes to optimize costs.

Long useful life The use of the highest quality materials and meticulous quality control guarantee the extraordinary solidity and the long useful life of all MICARE products. The same can be said of the components used: The LEDs are very durable and allow uninterrupted use. Another advantage of max-led is the low generation of heat.

Extremely easy to maintain and repair MAX-LED offers maintenance technicians a easy access to electronics, for conservation and effective repair. The complete technical data of the corresponding lamp are even legible, with suitable measuring instruments.



**YEARS OF USE
UNINTERRUPTED,
THANKS TO
LEDS
HIGH PERFORMANCE**

All values have been determined in accordance with the IEC 60601-2-41 standard.

Subject to changes in technique and design. Luminous values include a measurement tolerance of $\pm 10\%$.

According to the IEC 60601-2-41 standard, the maximum luminous intensity must not exceed 160,000 lux. Hence the measurement tolerance is only -10% .

Estimated LED Lifespan
80,000 hours

Diameter of the light field
12-28CM - 700
15- 35CM - 500

Max. light intensity Ec*
180,000LUX - 700
160,000LUX - 500

Color temperature
3,000K – 5,700K

Dimming capacity
from $> 10\%$ to 100%

Playback index
chromatic Ra / R9 / R13
96 / 98 / 99



TECHNICAL DATA SHEET			
Model	E700/700	E700/500	E500/500
Voltage	95-245V, 50/60HZ	95-245V, 50/60HZ	95-245V, 50/60HZ
Light Intensity at 1m (EC)	180,000 / 180,000Lux In Max	180,000 / 160,000Lux In Max	160,000 / 160,000Lux In Max
Lamp Head Diameter	650 / 650MM	650 / 650MM	650 / 650MM
LED Bulb Quantity	112 / 112PCS	112 / 82PCS	82 / 82PCS
Color temperature Range	3,000 -5,800K	3,000 -5,800K	3,000 -5,800K
Color rendering index Ra	96	96	96
Color rendering index R9	98	98	98
Focusable Light Field (Electronic Control)	150-350 / 150-350	150-350 / 120-280	120-280 / 120-280
Endo Ambient Lights	Green + Red Ambient Leds	Green + Red + Blue Ambient Leds	Green + Red + Blue Ambient Leds
"Depth of illumination (L1+L2) @ 20 %"	1600MM	1500MM	1400MM
"Depth of illumination (L1+L2) @ 60 %"	800MM	750MM	700MM
4.3" TFT LCD Touch Screen	STANDARD	STANDARD	STANDARD
Battery Back Up (6-8HRS)	OPTIONAL	OPTIONAL	OPTIONAL
Internal Sony Camera 20X +22Inches Monitor + 3rd Arm	OPTIONAL	OPTIONAL	OPTIONAL
Remote Control	OPTIONAL	OPTIONAL	OPTIONAL



TECHNICAL DATA SHEET		
Model	E700	E500
Voltage	95-245V, 50/60HZ	95-245V, 50/60HZ
Light Intensity at 1m (EC)	180,000 In Max	160,000Lux In Max
Lamp Head Diameter	650MM	650MM
LED Bulb Quantity	112PCS	82PCS
Color temperature Range	3,000 -5,800K	3,000 -5,800K
Color rendering index Ra	96	96
Color rendering index R9	98	98
Focusable Light Field (Electronic Control)	150-350	120-280
Endo Ambient Lights	Green + Red	Green + Red + Blue
"Depth of illumination (L1+L2) @ 20 %"	1500MM	1400MM
"Depth of illumination (L1+L2) @ 60 %"	750MM	700MM
4.3" TFT LCD Touch Screen	STANDARD	STANDARD
Battery Back Up (6-8HRS)	OPTIONAL	OPTIONAL
Internal Sony Camera 20X +22Inches Monitor + 3rd Arm	OPTIONAL	OPTIONAL
Remote Control	OPTIONAL	OPTIONAL



TECHNICAL DATA SHEET		
Model	E700L	E500L
Voltage	95-245V, 50/60HZ	95-245V, 50/60HZ
Light Intensity at 1m (EC)	180,000 In Max	160,000Lux In Max
Lamp Head Diameter	650MM	650MM
LED Bulb Quantity	112PCS	82PCS
Color temperature Range	3,000 -5,800K	3,000 -5,800K
Color rendering index Ra	96	96
Color rendering index R9	98	98
Focusable Light Field (Electronic Control)	150-350	120-280
Endo Ambient Lights	Green + Red	Green + Red + Blue
"Depth of illumination (L1+L2) @ 20 %"	1500MM	1400MM
"Depth of illumination (L1+L2) @ 60 %"	750MM	700MM
4.3" TFT LCD Touch Screen	STANDARD	STANDARD
Battery Back Up (6-8HRS)	OPTIONAL	OPTIONAL
Internal Sony Camera 20X +22Inches Monitor + 3rd Arm	OPTIONAL	OPTIONAL
Remote Control	OPTIONAL	OPTIONAL



TECHNICAL DATA SHEET		
Model	E700G	E500G
Voltage	95-245V, 50/60HZ	95-245V, 50/60HZ
Light Intensity at 1m (EC)	180,000 In Max	160,000Lux In Max
Lamp Head Diameter	650MM	650MM
LED Bulb Quantity	112PCS	82PCS
Color temperature Range	3,000 -5,800K	3,000 -5,800K
Color rendering index Ra	96	96
Color rendering index R9	98	98
Focusable Light Field (Electronic Control)	150-350	120-280
Endo Ambient Lights	Green + Red	Green + Red + Blue
"Depth of illumination (L1+L2) @ 20 %"	1500MM	1400MM
"Depth of illumination (L1+L2) @ 60 %"	750MM	700MM
4.3" TFT LCD Touch Screen	STANDARD	STANDARD
Battery Back Up (6-8HRS)	OPTIONAL	OPTIONAL
Internal Sony Camera 20X +22Inches Monitor + 3rd Arm	OPTIONAL	OPTIONAL
Remote Control	OPTIONAL	OPTIONAL

MICARE EXAM LIGHTS OUR MISSION IS TO ENHANCE YOUR VISION,

LED Examination Lamp FOCUS

FocusableModern, focusable practice examination lamp with energy saving LED technology. For examination and minor surgery. At an operating distance of 30 cm, the light spot can be adjusted from a diameter of 9 cm up to 15 cm. The excellent homogeneity of the light spot always ensures optimum illumination of the working field.



LED Examination Lamp (JD1600L LED Model)

- 15W White Led Lamp
- Illuminance: approx. 85,000 Lux in maximum
- aluminium illumination body for optimal heat convection and thermal radiation
- service life: approx. 50.000 hours
- Colour temperature: approx. 4.500 K
- Gooseneck construction with 60cm long neck, neck remains in desired position
- Switch on / off with lcd panel on lamp
- robust, non-tilting 5-foot-stand, made from metal (powder-coated)
- multifunction plug (EU/UK/US)

LED Examination Lamp (JD1200L LED Model)

- 12W White Led Lamp
- Illuminance: approx. 65,000 Lux in maximum
- aluminium illumination body for optimal heat convection and thermal radiation
- service life: approx. 50.000 hours
- Colour temperature: approx. 4.500 K
- Gooseneck construction with 60cm long neck, neck remains in desired position
- Switch on / off with lcd panel on lamp
- robust, non-tilting 5-foot-stand, made from metal (powder-coated)
- multifunction plug (EU/UK/US)



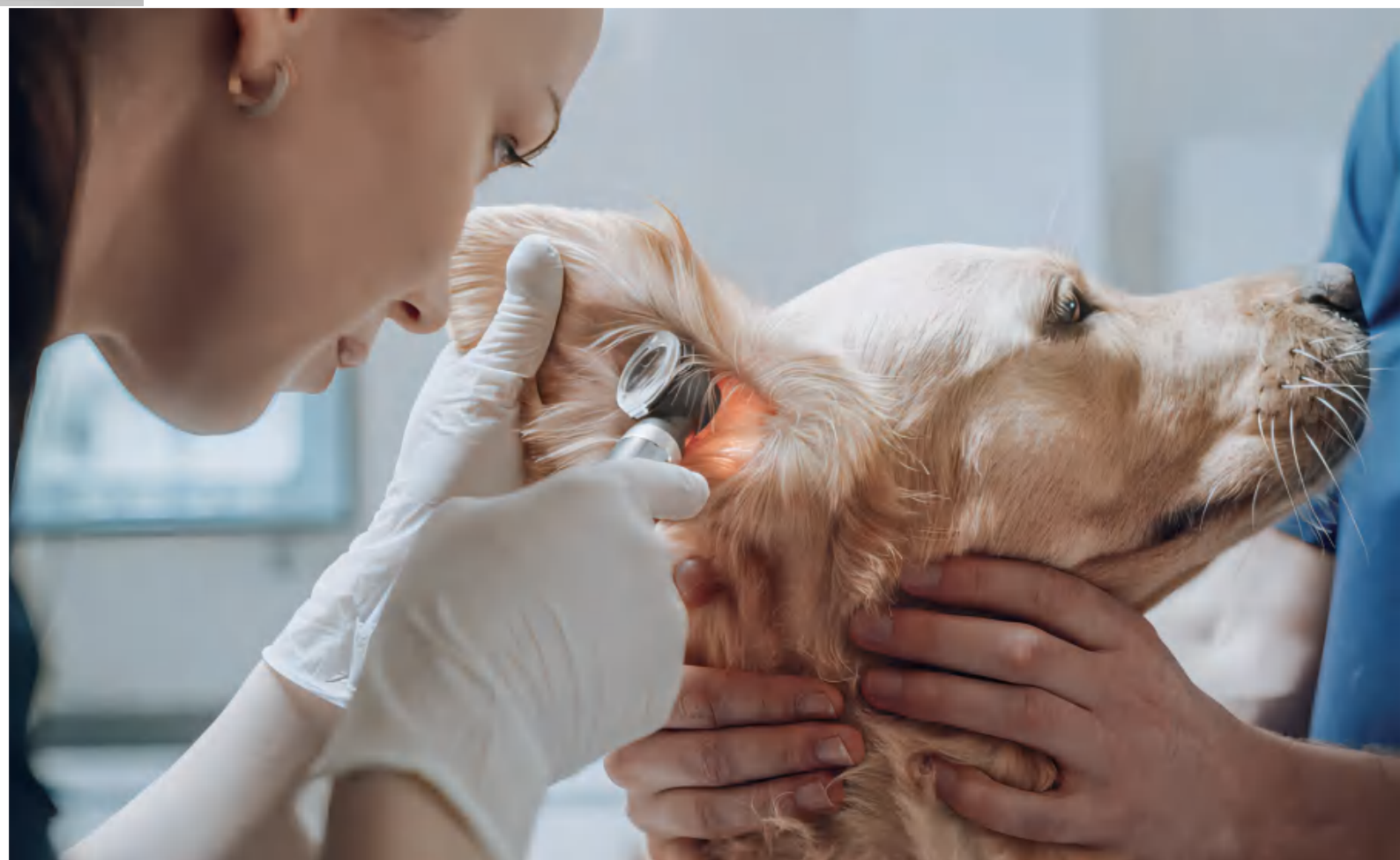
LED Examination Lamp (JD1100L LED Model)

- 7W White Led Lamp
- Illuminance: approx. 45.000 Lux
- aluminium illumination body for optimal heat convection and thermal radiation
- service life: approx. 50.000 hours
- Colour temperature: approx. 4.500 K
- Gooseneck construction with 60cm long neck, neck remains in desired position
- Foot switch for turn on/off
- robust, non-tilting 5-foot-stand, made from metal (powder-coated)
- multifunction plug (EU/UK/US)



LED Examination Lamp (JD1500 LED Model)

- 3W White Led Lamp
- Illuminance: approx. 30.000 Lux
- Aluminium illumination body for optimal heat convection and thermal radiation
- service life: approx. 50.000 hours
- Colour temperature: approx. 4.500 K
- Gooseneck construction with 60cm long neck, neck remains in desired position
- Button for turn on/off on lamp head
- robust, non-tilting 5-foot-stand, made from metal (powder-coated)
- multifunction plug (EU/UK/US)





Micare LED Medical headlight,
A shining example of our
commitment to veterinary surgeons

vet | **MEDICAL
HEADLIGHTS**



Warm white light; comparable with conventional lamps as bulbs or gas discharged lamps to ensure usual optimum illumination during examination.



Cold white light And Warm Yellow light for more detailed and improved contrast images, particularly in the red spectrum.



Illumination: LED-Ring. This technology makes the use of fibre optics unnecessary with nevertheless optimum illumination in the area of application.



The surface of the instrument is coated with a special coating powder. The regular cleaning effort is reduced significantly and the high-quality appearance is retained for the long term



Light spot can be adjusted from a diameter of 2 cm up to 12 cm at an operating distance of 30 cm.



Illumination: LED bulb. Reduced energy consumption as well as a higher shock resistance ensure a significantly longer service life of approx. 50,000 - 100.000 hours. LEDs can be sterilized and are environmentally friendly.

JD2500 10W LED Surgical headlight specifications:

Light source	LED refractive technology
Light Intensity (MAX)	Up To 85,000LUX
Color temperature	4,500 - 5,500K
Illumination Spot size (D = Φ 300MM)	Adjustable From 18-102MM
LED Bulb Life Time	50,000hrs +
Battery type	Rechargeable Lithium-ion (charger included)
Battery Life	5-12HRS
Battery charge time	0% life: 4 hours 50% life: 2 hours
Color Rendering Index	> 93



JD2600 5W LED Surgical headlight specifications:

Light source	LED refractive technology
Light Intensity (MAX)	Up To 45,000LUX
Color temperature	4,300 - 4,800K
Illumination Spot size (D = Φ 300MM)	Adjustable From 18-102MM
LED Bulb Life Time	50,000hrs +
Battery type	Rechargeable Lithium-ion (charger included)
Battery Life	5-12HRS
Battery charge time	0% life: 4 hours 50% life: 2 hours
Color Rendering Index	> 93



MF JD2900 3W LED Surgical headlight specifications:

Light source	LED refractive technology
Light Intensity (MAX)	Up To 45,000LUX
Color temperature	4,300 - 4,800K
Illumination Spot size (D = Φ 300MM)	Adjustable From 77MM
LED Bulb Life Time	50,000hrs +
Battery type	Rechargeable Lithium-ion (charger included)
Battery Life	5-12HRS
Battery charge time	0% life: 4 hours 50% life: 2 hours
Color Rendering Index	> 93



Empowering Veterinary Care



Never Stop Elevating Your Vet Experience.



Nanchang Micare Medical Equipment Co.,Ltd
No.666 Yaohu West 5h Road, Hi-tech zone, Nanchang, Jiangxi, China
www.micare-med.com / www.ledoperatinglamp.com