

MULTI-COLOR PLUS LED OPERATING LIGHT
 FLEXIBLE IN COLOR OPTIONAL



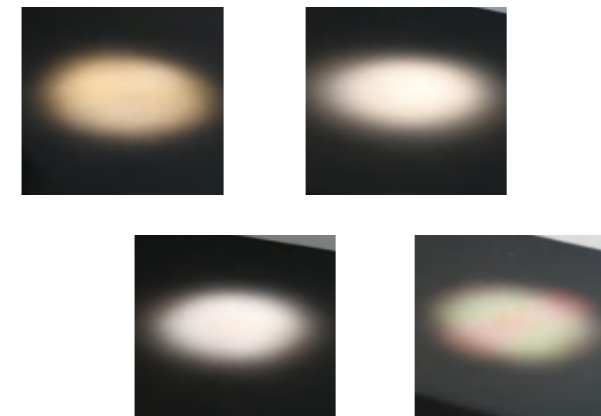
High Quality Illumination For Optimal Visibility

In the operating room, shadow-free lighting that does not change the surrounding climatic conditions and minimally affects air flow is essential. The wide variety of performed procedures calls for extreme flexibility, and equipment must be adaptable to individual requirements at all time -time for the new MICARE LED technology

MICARE: Your work under the best light

A surgical light should bring perfect light to all surgical applications – consistently, brilliantly, and shadow-free. At the same time, it must be both simple and intuitive to operate as well as easy to clean despite the highest standards of hygiene. combined with highest operational

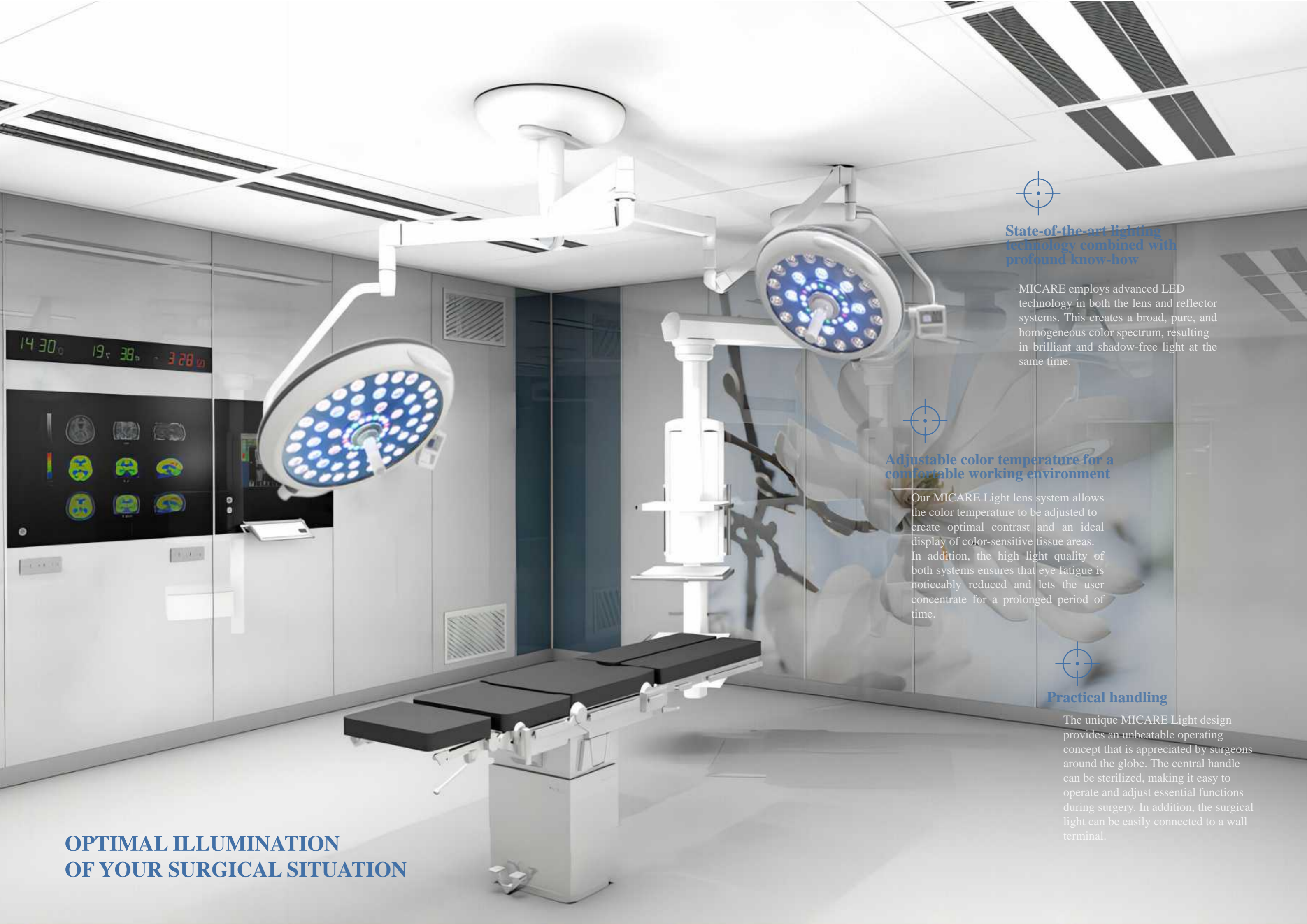
Capabilities Micare Light is a state-of-the-art lighting system that creates optimal lighting conditions in every operating theater and treatment room. The visionary design and sophisticated lighting technology allow the user to focus fully on the essentials: the patient and the outcome of treatment. In addition, micare Light is available in different sizes – culminating in individual design according to your wishes.



ADJUSTABLE COLOR TEMPERATURE

From warm yellow to cold white (3,500 - 5,700 Kelvin) freely for choose to reduce fatigue or glare during longer procedures and increase individual perception for each surgical situation.





State-of-the-art lighting technology combined with profound know-how

MICARE employs advanced LED technology in both the lens and reflector systems. This creates a broad, pure, and homogeneous color spectrum, resulting in brilliant and shadow-free light at the same time.



Adjustable color temperature for a comfortable working environment

Our MICARE Light lens system allows the color temperature to be adjusted to create optimal contrast and an ideal display of color-sensitive tissue areas. In addition, the high light quality of both systems ensures that eye fatigue is noticeably reduced and lets the user concentrate for a prolonged period of time.



Practical handling

The unique MICARE Light design provides an unbeatable operating concept that is appreciated by surgeons around the globe. The central handle can be sterilized, making it easy to operate and adjust essential functions during surgery. In addition, the surgical light can be easily connected to a wall terminal.

**OPTIMAL ILLUMINATION
OF YOUR SURGICAL SITUATION**



**New manufacturing concept:
First in world seamless surface**

Unique manufacturing technology Through CNC milling offers the first full-aluminum monocoque light head in the market with perfect properties for an hygienic working environment. Ideal laminar flow properties and aerodynamic design provide best cooling conditions for the LED's. The clean design offers one of the most elegant light heads in the market. Improved LED's provide best in class color temperature of 3.500K - 5,700K offering a cool, bright and efficient illumination of the surgical field



Multi-color lens technology

The micare led multi-color OR-lights allow a variable adjustment of color temperature during surgery depending on surgical application and tissue color sensitivity and thereby ensure an optimum contrast and ideal presentation of all tissue areas

**Optimal illumination
of your surgical situation**

Efficient technology

Low heat generation and extremely high light output - due to the special lens / LED combination

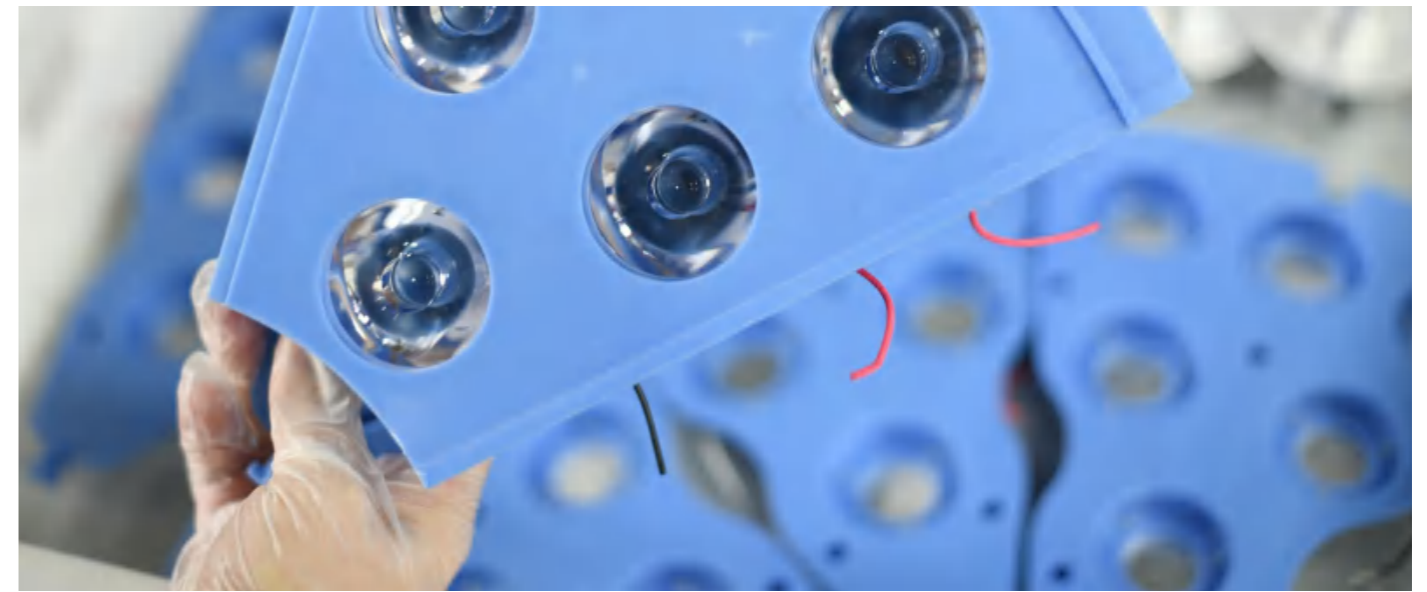
High intensity

Innovative energy management and adaptation of the light field diameter to the size of the wound field ensure optimal viewing conditions in the surgical field

**Smooth housing contours
including aerodynamic flow
Characteristics**

Micare surgical lights

are one of the most slimline on the market. Our flow-optimized design supports laminar air flow systems, thus enabling low-turbulence flow in the operating theater.

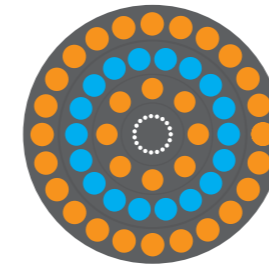


Efficient and long-lasting products

Evonos understands these circumstances and therefore places extreme importance on an economical lighting system that meets your requirements. You benefit from short installation times, a long service life, and a well thought out operating concept.

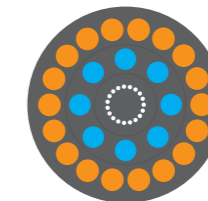
high-tech lenses provide brilliant homogeneous light

In addition to the mechanical stability of the housing, the cover is made of tempered, scratch-resistant glass and can be cleaned without any limitations, thus also contributing to the longevity of the lights.



Multi-color plus E700

66 lenses with 37MM , 8 modules with 5 warm and 4 cold lenses each



Multi-color led E500

42 lenses with 37MM , 8 modules with 5 warm and 4 cold lenses each

Control panel of Multi-color led plus 700 / 500

You control the main functions directly via the control panel attached to the gimbal. Here you can set the illuminance, the size of the light field and the color temperature. Further more, you can also activate the AMBIENTS Light for endoscopic operations





STANDARD FOR TOUCH PANEL

OPTIONAL FOR 4.3INCHES LCD TOUCH SCREEN



Illumination Intensity Adjustment
(Max. 200,000Lux For 700, 180,000Lux For 500)



Light Field Size Adjustment
(Max. 15-28CM For 700, 16-25CM For 500)



Color Temperature
3,500K / 3,800K / 4,300K / 4,800K / 5,300K / 5,700K



Color Rendering Index
RA: 96 / R9: 98



6 Different Modes
Deep Surgery / General Surgery / Examine Mode / Surface Surgery / Endoscopy Mode / Day Light



10INCHES TABLET PC WALL CONTROL

SYNC CONTROL LED OPERATING LIGHT FUNCTIONS



Back-up Battery Optional (24V12.2AH)

- Over Voltage Detection
- Under Voltage Detection
- Discharging Over Current Detection
- Short Circuit Detection
- Battery Power Digital Display
- Life cycle : 800 cycle (charge/discharge)
- Working Time : 8-10 Hours, Charging Time: 4Hrs



Equipment and accompanying systems



SONY 20X INTERNAL CAMERA



AUTOCALVE STERILIZATION HANDLES



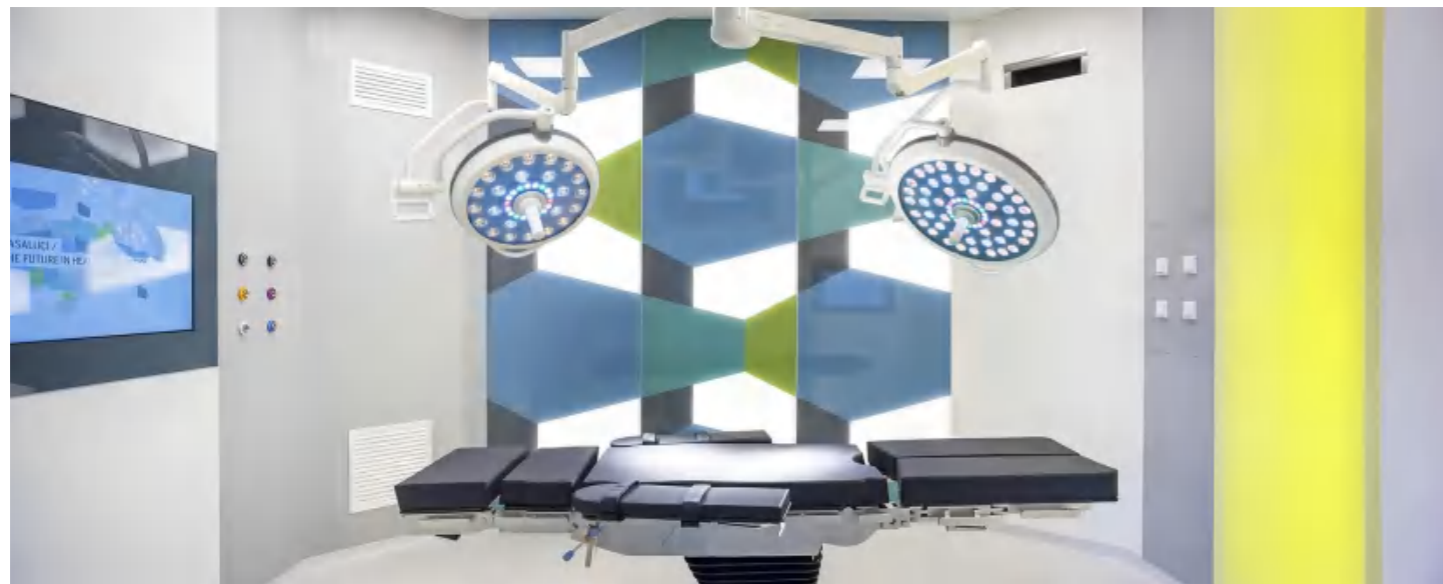
10INCHES WALL REMOTE CONTROL



4.3INCHES LCD TOUCH SCREEN



22" / 27" / 32" MEDICAL MONITOR



Not just meeting quality standards, but exceeding them



At a glance: the evoLight product portfolio
We are the only manufacturer worldwide to offer our surgical lights with lens or reflector technology.



In addition to the large variety of sizes, evonos can realize solutions for individual customer requirements. A wide range of accompanying systems rounds off our portfolio. Discover the (almost) unlimited options for yourself on the following pages

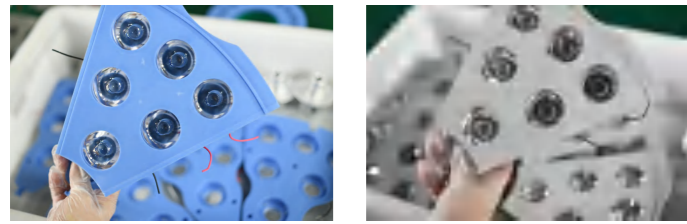


Smooth housing contours including aerodynamic flow characteristics

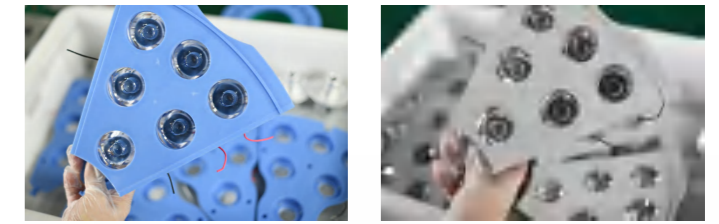
With a housing height of only 55 mm, evonos surgical lights are one of the most slimline on the market. Our flow-optimized design supports laminar air flow systems, thus enabling low-turbulence flow in the operating theater.



TECHNICAL DATA SHEET



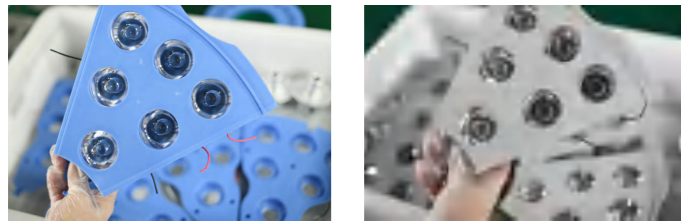
TECHNICAL DATA SHEET



| Model No | E700/700 | E700/500 | E500/500 |
|-------------------------------------|---|---|---|
| Voltage | 95V - 245V, 50/60HZ | 95V - 245V, 50/60HZ | 95V - 245V, 50/60HZ |
| Illuminance at distance of 1 m(LUX) | 60,000 - 200,000Lux / 60,000 - 200,000Lux | 60,000 - 200,000Lux / 40,000 - 180,000Lux | 40,000 - 180,000Lux / 40,000 - 180,000Lux |
| Control Of Light Intensity | 10 - 100% | 10 - 100% | 10 - 100% |
| Lamp Head Diameter | 700 / 700MM | 700 / 500MM | 500 / 500MM |
| Quantity Of LEDS | 66 / 66PCS | 66 / 42PCS | 42 / 42PCS |
| Color Temperature Adjustable | 3,000 - 5,700K | 3,000 - 5,700K | 3,000 - 5,700K |
| Color rendering index RA | 96 | 96 | 96 |
| Color rendering index R9 | 98 | 98 | 98 |
| Focusable light field size | 15-28CM / 15-28CM | 15-28CM / 18-26CM | 18-26CM / 18-26CM |
| Light field diameter d10 | 28CM / 28CM | 28CM / 25CM | 25CM / 25CM |
| Light field diameter d50: | 22CM / 22CM | 22CM / 20CM | 20CM / 20CM |
| Total radiant flux density | < 364 - 500W/m2 | < 364 - 500W/m2 | < 364 - 500W/m2 |
| Endoscopy Mode | Red + Green Balance | Red + Green Balance | Red + Green Balance |
| Endoscopy Mode LEDS | 18PCS | 18PCS | 18PCS |
| Illumination For Endo-Mode | 20% | 20% | 20% |
| LED service life | 80,000hrs | 80,000hrs | 80,000hrs |
| Main Material | Aluminum | Aluminum | Aluminum |
| Operating element | Touch Panel (Standard) | Touch Panel (Standard) | Touch Panel (Standard) |
| Light head protection rating | IP54+FireProof | IP54+FireProof | IP54+FireProof |
| Depth of illumination L1+L2 at 20% | 1600MM | 1500MM | 1400MM |
| Depth of illumination L1+L2 at 60% | 850MM | 800MM | 750MM |
| Temperature increase in head area: | 1 C | 1 C | 1 C |
| Height adjustment | UP +45°, Down -50° 1100MM 360° | UP +45°, Down -50° 1100MM 360° | UP +45°, Down -50° 1100MM 360° |
| LED Lens Diameter | 35MM | 35MM | 35MM |
| LAM (Illumination Compensation) | OPTIONAL | OPTIONAL | OPTIONAL |
| Synchronization Control | OPTIONAL | OPTIONAL | OPTIONAL |
| Remote / Wall Control | OPTIONAL | OPTIONAL | OPTIONAL |
| Back Up Battery (8-10hrs) | OPTIONAL | OPTIONAL | OPTIONAL |
| Internal/External Sony Camera (20X) | OPTIONAL | OPTIONAL | OPTIONAL |
| Monitor With Extra Arm | 24 / 27 / 32 INCHES | 24 / 27 / 32 INCHES | 24 / 27 / 32 INCHES |

| Model No | E700 | E500 |
|-------------------------------------|--------------------------------|--------------------------------|
| Voltage | 95V - 245V, 50/60HZ | 95V - 245V, 50/60HZ |
| Illuminance at distance of 1 m(LUX) | 60,000 - 200,000Lux | 40,000 - 180,000Lux |
| Control Of Light Intensity | 10 - 100% | 10 - 100% |
| Lamp Head Diameter | 700MM | 500MM |
| Quantity Of LEDS | 66PCS | 42PCS |
| Color Temperature Adjustable | 3,000 - 5,700K | 3,000 - 5,700K |
| Color rendering index RA | 96 | 96 |
| Color rendering index R9 | 98 | 98 |
| Focusable light field size | 15-28CM | 18-26CM |
| Light field diameter d10 | 28CM | 25CM |
| Light field diameter d50: | 22CM | 20CM |
| Total radiant flux density | < 364 - 500W/m2 | < 364 - 500W/m2 |
| Endoscopy Mode | Red + Green Balance | Red + Green Balance |
| Endoscopy Mode LEDS | 18PCS | 18PCS |
| Illumination For Endo-Mode | 20% | 20% |
| LED service life | 80,000hrs | 80,000hrs |
| Main Material | Aluminum, IP54 | Aluminum, IP54 |
| Operating element | Touch Panel (Standard) | Touch Panel (Standard) |
| Light head protection rating | IP54+FireProof | IP54+FireProof |
| Depth of illumination L1+L2 at 20% | 1200MM | 1100MM |
| Depth of illumination L1+L2 at 60% | 750MM | 700MM |
| Temperature increase in head area: | 1 C | 1 C |
| Height adjustment | UP +45°, Down -50° 1100MM 360° | UP +45°, Down -50° 1100MM 360° |
| LED Lens Diameter | 35MM | 35MM |
| LAM (Illumination Compensation) | OPTIONAL | OPTIONAL |
| Synchronization Control | OPTIONAL | OPTIONAL |
| Remote / Wall Control | OPTIONAL | OPTIONAL |
| Back Up Battery (8-10hrs) | OPTIONAL | OPTIONAL |
| Internal/External Sony Camera (20X) | OPTIONAL | OPTIONAL |
| Monitor With Extra Arm | 24 / 27 / 32 INCHES | 24 / 27 / 32 INCHES |

Advanced documentation is modern medicine



| | | |
|-------------------------------------|--------------------------------|--------------------------------|
| Model No | LED-E700L | LED-E500L |
| Voltage | 95V - 245V, 50/60HZ | 95V - 245V, 50/60HZ |
| Illuminance at distance of 1 m(LUX) | 60,000 - 200,000Lux | 40,000 - 180,000Lux |
| Control Of Light Intensity | 10 - 100% | 10 - 100% |
| Lamp Head Diameter | 700MM | 500MM |
| Quantity Of LEDS | 66PCS | 42PCS |
| Color Temperature Adjustable | 3,000 - 5,700K | 3,000 - 5,700K |
| Color rendering index RA | 96 | 96 |
| Color rendering index R9 | 98 | 98 |
| Focusable light field size | 15-28CM | 18-26CM |
| Light field diameter d10 | 28CM | 25CM |
| Light field diameter d50: | 22CM | 20CM |
| Total radiant flux density | < 364 - 500W/m2 | < 364 - 500W/m2 |
| Endoscopy Mode | Red + Green Balance | Red + Green Balance |
| Endoscopy Mode LEDS | 18PCS | 18PCS |
| Illumination For Endo-Mode | 20% | 20% |
| LED service life | 80,000hrs | 80,000hrs |
| Main Material | Aluminum, IP54 | Aluminum, IP54 |
| Operating element | Touch Panel (Standard) | Touch Panel (Standard) |
| Light head protection rating | IP54+FireProof | IP54+FireProof |
| Depth of illumination L1+L2 at 20% | 1200MM | 1100MM |
| Depth of illumination L1+L2 at 60% | 750MM | 700MM |
| Temperature increase in head area: | 1 C | 1 C |
| Height adjustment | UP +45°, Down -50° 1100MM 360° | UP +45°, Down -50° 1100MM 360° |
| LED Lens Diameter | 35MM | 35MM |
| LAM (Illumination Compensation) | OPTIONAL | OPTIONAL |
| Synchronization Control | OPTIONAL | OPTIONAL |
| Remote / Wall Control | OPTIONAL | OPTIONAL |
| Back Up Battery (8-10hrs) | OPTIONAL | OPTIONAL |
| Internal/External Sony Camera (20X) | OPTIONAL | OPTIONAL |
| Monitor With Extra Arm | 24 / 27 / 32 INCHES | 24 / 27 / 32 INCHES |

DOCUMENTATION AND DEMONSTRATION

Video documentation has a number of important applications. Whether it's education and training, live operations, for research, or for forensic purposes, more and more hospitals are choosing this useful option. Dräger offers you a selection of integrated or external video camera systems in either standard or high-definition resolution.

LIGHTING YOUR WORLD

MICARE can help you plan and equip your OR, ER, and ICU and can provide valuable expertise when it comes to innovative new workplace concepts such as integrated and hybrid ORs. Our line of wall- and ceiling-mounted swivel arm solutions – lights and supply units – and control options was designed to let you position and direct light easily and accurately. Our team of experts can advise you on the right combination of models that best suits your particular needs, helping you to get the most out of any care area.

Video components

Display:
Medical-quality display, up to 22", 27" for video images and data.



MEDICAL MONITOR 22", 27"

Integrated SD or HD camera Polaris:
Provides a direct view of the operating field with optimal exposure. Replaces the central handle and includes a picture rotation as well as an adjustment for the illumination radius.



SONY 20X/30X CAMERA

External SD camera, MedView:
Flexible, sterile positioning of the camera, independent from the light source. Suitable for providing a good overview of the situation on and around the table.



10INCHES WALL / REMOTE CONTROL



There for you, whenever you need us

No matter how much some things change over time, one thing will remain the same: our service commitment to you. In more than 190 countries around the globe, Dräger is there for you with service, assistance, and advice whenever you need it.

EXCELLENT SHADOW CONTROL

120EA(LED 160) & 88EA(LED 120) LED provide excellent shadowless effect

MANUAL FOCUSING

Users can easily control the light at any position

STREAMLINED DESIGN

Suitable for laminar flow ceiling

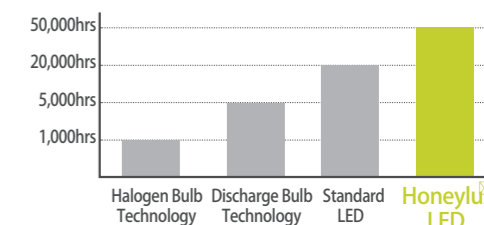
STERILIZABLE HANDLE

Autoclave available



360° ROTATING ARM

LONG SERVICE LIFE



FULL HD CAMERA CONTROL

Camera offers multimedia and interactive communication (option)

MODULAR LAMP

Low maintenance requirement due to modular lamp inside



ENDO-MODE

Suitable for endo-surgery by one click



DESIGN
Sleek design
Small light head
Easy positioning



THERMAL MANAGEMENT
Temperature at the rear surface of the light head <35°C



COLOUR CODING
The light system and the wall panel are colour-coded for easier identification



CAMERA
High-quality HD camera integrated into the light head
120x zoom, wireless transmission of video signal



HANDLE
Sterilisable handle



EASY
Intuitive control panel
Wall panel
Handles on the light head



LIGHT INTENSITY
Dräger Polaris® 100: 40,000 to 120,000 lx
Dräger Polaris® 200: 40,000 to 160,000 lx
Endolight, 300 lx
Average service life of LEDs: 50,000 h



COLOUR TEMPERATURE
4,400, 5,000 or 5,600 K available



LIGHT FIELD DIAMETER
The light field can be adjusted incrementally to give perfect illumination



DESIGN
Sleek design
Small light head
Easy positioning



Technical data TFT monitors

| Product | Features | Signals/Interfaces Outputs | Signals/Interfaces Inputs |
|---|--|--|--|
| Radiance 22" (w/o fiber-optic input) | Resolution 1920 x 1080, response time 5-12 ms Types of voltage 24 VDC High-quality endoscopy display with HD-SDI interface PIP (picture-in-picture) mode and other features | 1x DVI-D loop (DVI socket) 1x S-video loop (mini DIN) 1x HD-SDI loop (BNC) | 1x DVI-I (DVI socket) 1x DVI-D (DVI socket) 1x VGA (D-sub, 15-pole) 1x S-video (mini DIN) 1x S-video (2x BNC) 1x composite color video signal (BNC) 1x YPbPr (3x BNC) 1x RGBS (3x BNC) 2x HD-SDI (BNC) 1x RS232 (D-sub, 9-pole) |

Compatible with the Latest Generation of Cameras

The MICARE MULTI-COLOR LED PLUS Surgical Light can be directly connected to the innovative and delay-free SONY Internal Camera System via the handle unit interface, providing brilliant recordings in full HD. Individual images for documentation purposes are possible using the snapshot function. Benefits of wireless technology: ability to install and/or upgrade this system at no additional cost or the need for complex video cabling. In addition, it can be controlled from the mobile tablet or wallmounted operating panel.

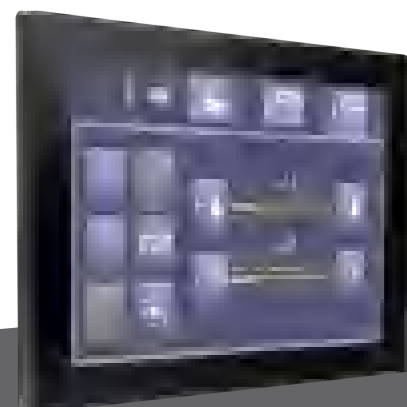


The SONY 20X/30X Internal Camera provides excellent image quality and encrypted transfer provides maximum data security

TruConnect OR Integration System: Intelligently Linked

The MICARE Surgical Light is compatible with the innovative OR Integration System by MICARE Medical. The management and training system enables you to operate different MICARE Medical OR devices. This comprises lights, tables and cameras – even under sterile conditions. With MICARE OR Integration System Wall Control, you do not need any other remote control devices.

Instead, intuitive, mobile control of the integrated components is possible via the user interface on the tablet, including graphical feedback. The flexible app concept enables the MICARE OR Integration System to be individually extended with the addition of devices and functionalities and combined with other MICARE Medical solutions.



NANCHANG MICARE MEDICAL EQUIPMENT CO.,LTD
IDEA FOR MEDICAL LIGHTING

WWW.MICARE-MED.COM
WWW.SURGICALLIGHT.COM



MICARE is a leading global medical lighting technology company. We partner with health care providers by focusing on patient care solutions that improve clinical and economic outcomes in five core areas: Advancing Mobility, Wound Care and Prevention, Clinical Workflow, Surgical Safety and Efficiency, and Respiratory Health. MICARE people, programs, and product brands work towards one mission: Every day, around the world, we enhance outcomes for our patients and their caregivers.

MICARE Medical offers innovative products to improve efficiency and safety in the OR, ICU, and in other clinical environments throughout the care sector. With our customers' requirements as our innovation as the foundation of our success, MICARE Medical delivers total solutions to fit your clinical care needs.

This document is destined solely for use by healthcare professionals. Medical devices shown in this brochure are intended for use with patients in departments of healthcare establishments.



These products are regulated health care products which, where required by applicable regulations, bear a CE mark. MICARE recommends you carefully read the detailed instructions for safe and proper use included in the documentation accompanying the medical devices.



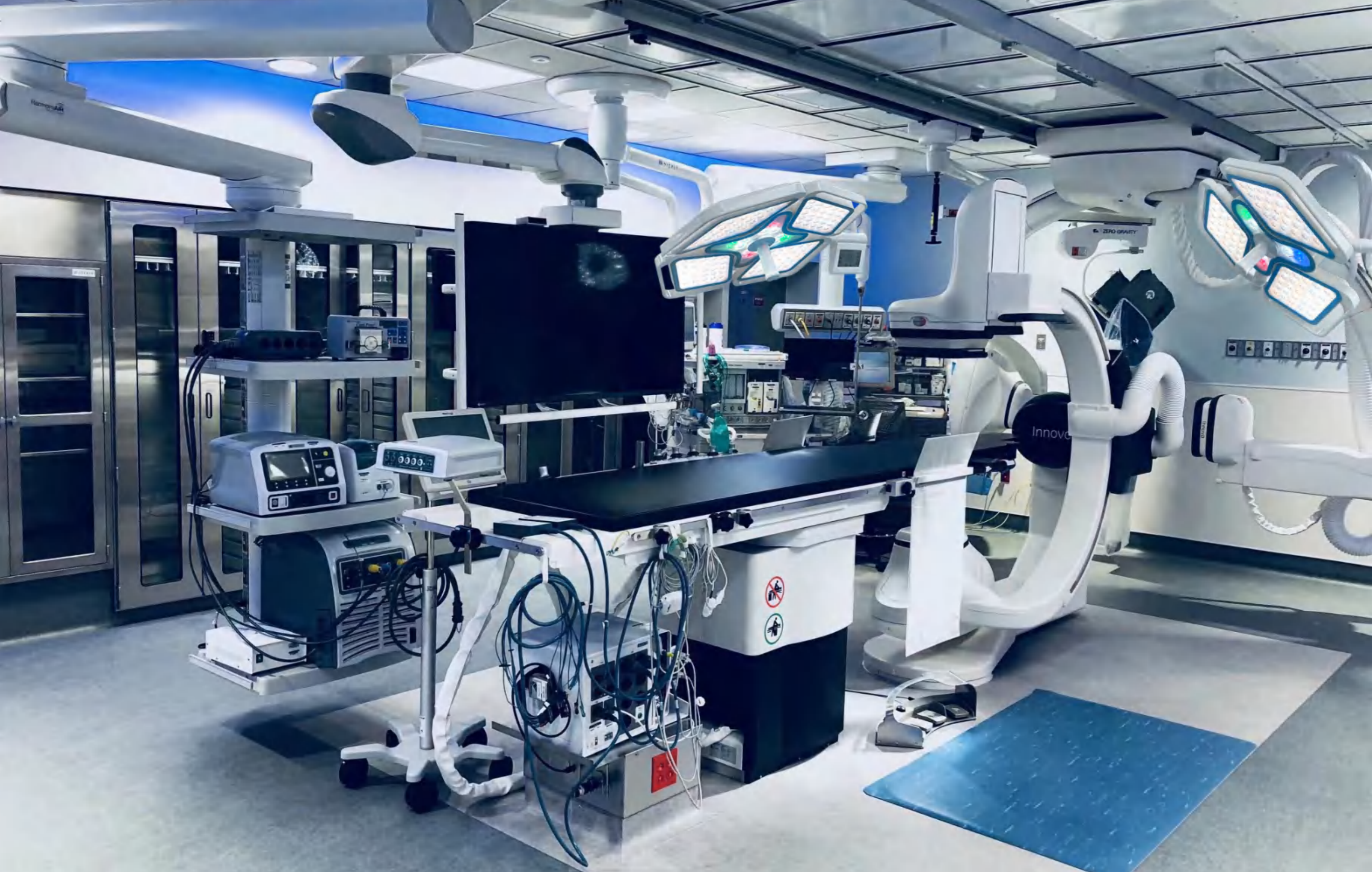
— MICARE LIGHTING
PUSHING TECHNOLOGY TO EXCELLENCE

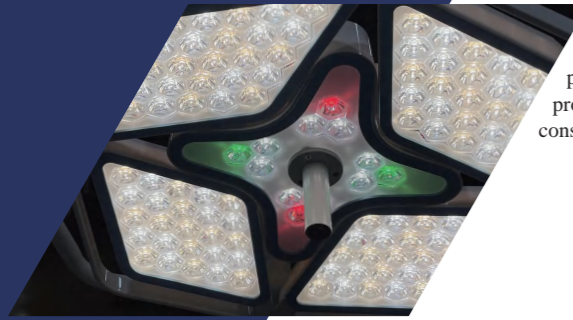
MAX-LED Hybrid Room OR Light — UNIQUE DESIGN FOR IDEAL LIGHTING

Demanding tasks require special solutions. With the innovative MAX-LED surgical lights we give you all the benefits of cutting-edge LED technology, in a uniquely effective way. MICARE offers trendsetting light and system solutions that can be retrofitted easily and without special preparation. This includes, for example, the wireless equipping of your surgical lights with cameras.

MAX INNOVATIVE & DIFFERENT



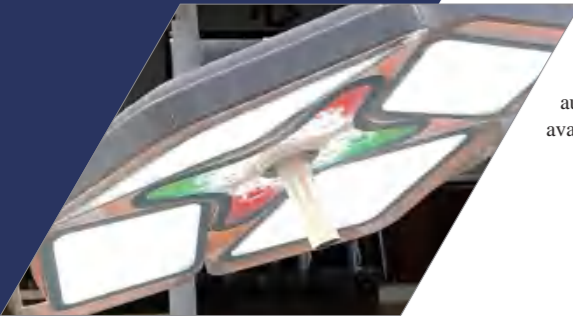




High quality LEDs
with the lowest infrared or ultraviolet emissions, protects the patient from drying out of the tissue and provides a high quality working condition with the constant high-class lighting temperature to the operator.

MAX-TREMELY FUNCTIONAL

You have options for operating MAX-LED. The control panel on the light for setting the main functions. You can use the touch-sensitive MAX-LED controller to adjust every parameter for your specific requirements during the operation. And even better: you can set your own "personal light", the precise light settings that you prefer. You can also control all the functions of the MAX-LED camera systems without difficulty. All completely intuitive with the self-explanatory, icon-based operation of the touch screen.

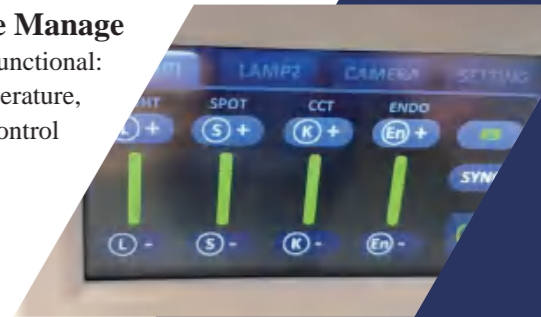


Active Shadow Management
light precisely where you need it with MAX-LED. Active Shadow Optional Management is a fully automatic system for ensuring that light is always available exactly where it is needed.



Perfect and even illumination
can be adjusted for any situation. 112PCS powerful LEDs ensure that the surgical site always appears in the best light, literally. The conditions for a successful procedure are always ideal.

Flexible Manage
4.3Inches TFT LCD Touch Screen With Functional:
Light Intensity , Light Beam , Color Temperature,
EndoLight Control



Ambient Lights Balance
Green Ambient in Endolight less stressful on the eyes during surgery. Red Ambient In Endolight provides optimum visualisation of red tissues. Red balance enhancement compensates for our natural weakness in distinguishing shades of red and is user adjustable to fine-tune the light to match our own red vision and the surgical conditions.



MAX-beam path for maximum variability

And that particularly applies to the surgical field and how it is illuminated. With its innovative beam path concept the MAX-LED offers you a previously unattainable light field size from 15 cm to 35 cm.



Language Customization
MAX LED support different languages customization: Spanish, French, Russian, Portuguese, Arabic, German, Italian, Japanese, Korean etc.



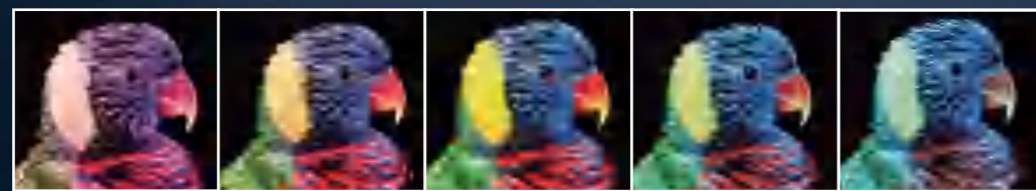
Your benefits at a glance:

- Warm white/cold white LEDs for brilliant, homogenous light
- Variable light field geometry and matrix light function
- Active Shadow Management for shadow-free illumination
- combined with excellent color rendering
- Maximum light field variability with innovative beam path concept
- SYNC Mode Control optional to provide easy working for 2lamps
- Wireless infrared remote control optional



 Multi Colours

Adjustable color control



3,000 K 4,000 K 4,500 K 5,000 K 5,800 K

MAX-LED provides adjustable color temperature to optimize visualization of red tissues. Color temperature is variable from 3000K – 5800K.

Clear Visualization For Better Results

Improved Beam Technology Quick and Comfortable Usage Special lens technology designed for surgical lighting fully compatible with LED, provides homogeneous light field; when the light field is changed, the light intensity does not change.

- Multiple Light Beam Configuration for Shadowless Illumination
- Improved Beam Technology
- No flicker effect
- Quality Light
- Super Optical Performance
- 4.3" TFT LCD Touch Screen Panel
- Memory function
- Easy to clean
- Endo Mode
- Ergonomic and practical design
- Laminar Air Flow
- Quick and comfortable usage
- Extra Protection

Maximum consistent

Adaptive color temperature combined with excellent color rendering – for a very natural view

The illuminance and the color temperature can be set precisely and retained in order to create and maintain a consistent ideal light situation and mood. The color rendering index is at the top level, as impressively confirmed by the outstanding quality of the MAX-LED system

Your benefits at a glance:

- Functional slimline design of the light housing
- Light-emitting area from genuine glass
- Easy-to-clean closed housing shape – therefore extremely hygienic
- Shape optimized for flow to prevent air turbulence
- Suitable for laminar air flow systems
- IP55: complete protection from dust deposits and moisture inside

MAX-LED

TECHNICAL SHEET

MAX-LED is the intelligent solution for any operating theatre. The design is optimised for an OR's air flow, improving air flow circulation in the operating area and reducing the potential for contamination. In addition, the Dynamic Obstacle Compensation of MAX-LED automatically adapts to the shadows in the light field. Furthermore, Intuitive Sterile Surgeon Control makes surgical operations safer and more ergonomic for surgeons. The user interface design is simplicity itself – anyone can use it.



| Model | E700/700 | E700/500 | E500/500 |
|--------------------------------------|------------------------------------|-------------------------------------|------------------------------------|
| Voltage | 95-245V, 50/60HZ | 95-245V, 50/60HZ | 95-245V, 50/60HZ |
| Light Intensity at 1m (EC) | 60,000-180,000/ 60,000 -180,000 | 60,000-180,000 / 40,000 -160,000 | 40,000-160,000/ 40,000 -160,000 |
| Light Intensity Ajustable | 0%-100% | 0%-100% | 0%-100% |
| Lamp Head Diameter(MM) | 650/650 | 650/650 | 650/650 |
| LED Bulb Quantity | 112 + 112 PCS | 112 + 82 PCS | 82 + 82 PCS |
| Color temperature(Kelvin) | 3,000 -5,800 | 3,000 -5,800 | 3,000 -5,800 |
| Color rendering index Ra | 96 | 96 | 96 |
| Color rendering index R9 | 98 | 98 | 98 |
| Spot Size Beam | 150-350 / 150-350 | 150-350 / 120-280 | 120-280 / 120-280 |
| Total Radiant Flux Density | 364W/m ² | 364W/m ² | 364W/m ² |
| Endo Ambient Lights | Green + Red | Green + Red + Blue | Green + Red + Blue |
| Endo Lights Quantity (PCS) | 12 + 12 | 12 + 6 | 6 + 6 |
| Light Intensity For Endo Lights | 15% | 12% | 10% |
| Rated Power | 220W | 190W | 160W |
| Depth of illumination (L1+L2) @ 60 % | 750MM | 700MM | 650MM |
| Depth of illumination (L1+L2) @ 20 % | 1400MM | 1300MM | 1200MM |
| Class Of Protective | IP55 | IP55 | IP55 |
| Main Material | Aluminum Alloy | Aluminum Alloy | Aluminum Alloy |
| Rotation | 540° | 540° | 540° |
| 4.3" TFT LCD Touch Screen | Optional | Optional | Optional |
| Dynamic Obstacle Compensation | Optional | Optional | Optional |
| Back Up Rechargeable Battery | Optional | Optional | Optional |
| Internal Sony Camera 20X | Optional | Optional | Optional |
| Remote Control | Optional | Optional | Optional |
| LED Brand | OSRAM | OSRAM | OSRAM |

MAX-LED

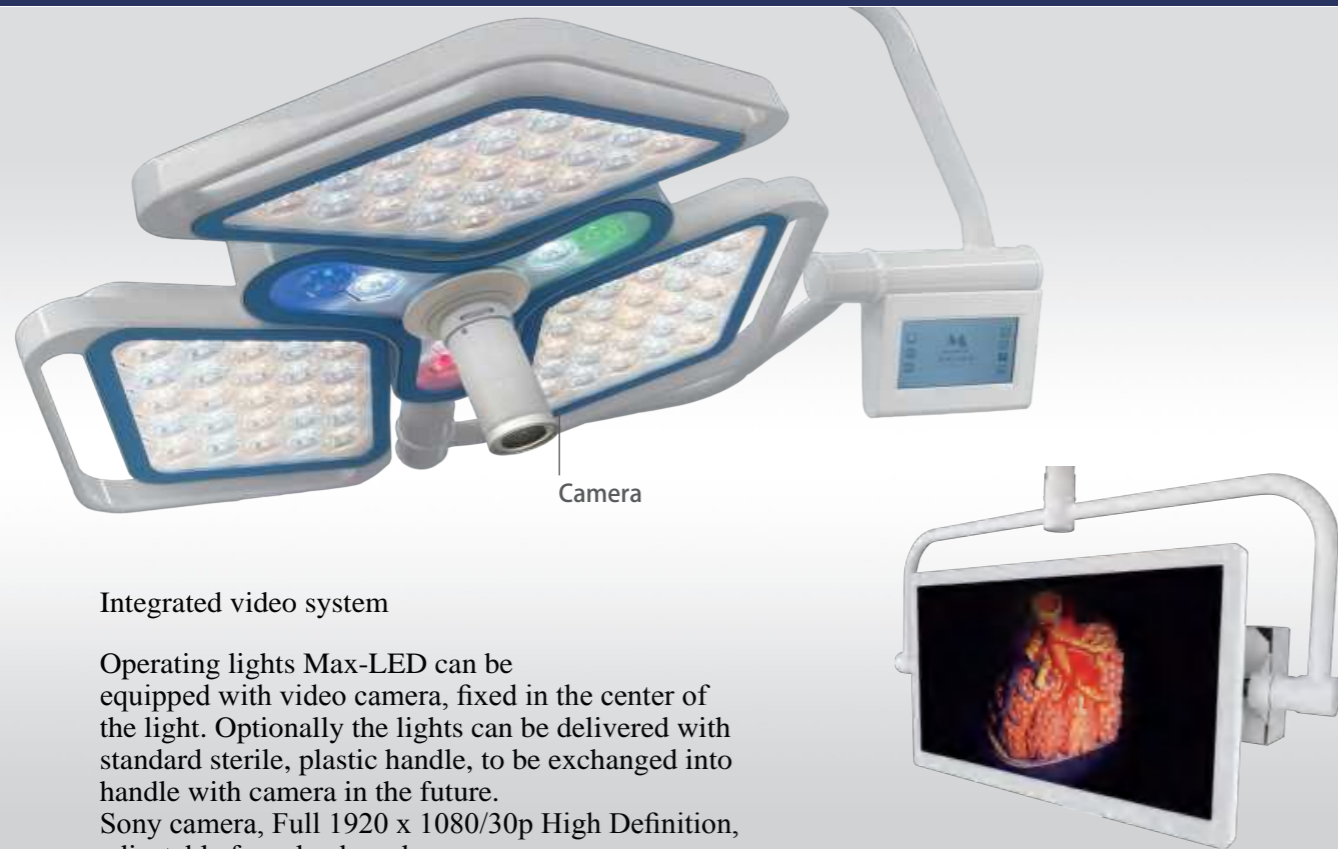
TECHNICAL SHEET

Each medical specialty requires particular and specific installations. The modular design of MAX-LED surgical lighting with multiple associated products brings a unique architectural, tailor-made solution which precisely responds to both your current and future needs.



| Model | E700 | E500 | E700L | 500L |
|--------------------------------------|----------------------|----------------------|----------------------|----------------------|
| Voltage | 95-245V, 50/60HZ | 95-245V, 50/60HZ | 95-245V, 50/60HZ | 95-245V, 50/60HZ |
| Light Intensity at 1m (EC) | 60,000-180,000 | 40,000 -160,000 | 60,000-180,000 | 40,000 -160,000 |
| Light Intensity Ajustable | 0%-100% | 0%-100% | 0%-100% | 0%-100% |
| Lamp Head Diameter(MM) | 650 | 650 | 650 | 650 |
| LED Bulb Quantity | 112 PCS | 82 PCS | 112 PCS | 82 PCS |
| Color temperature(Kelvin) | 3,000 -5,800K | 3,000 -5,800K | 3,000 -5,800K | 3,000 -5,800K |
| Color rendering index Ra | 96 | 96 | 96 | 96 |
| Color rendering index R9 | 98 | 98 | 98 | 98 |
| Spot Size Beam | 150-350 | 120-280 | 150-350 | 120-280 |
| Total Radiant Flux Density | 364W/ m ² | 364W/ m ² | 364W/ m ² | 364W/ m ² |
| Endo Ambient Lights | Green + Red | Green + Red + Blue | Green + Red | Green + Red + Blue |
| Endo Lights Quantity (PCS) | 12 | 6 | 12 | 6 |
| Light Intensity For Endo Lights | 15% | 12% | 15% | 12% |
| Rated Power | 110W | 80W | 110W | 80W |
| Depth of illumination (L1+L2) @ 60 % | 750MM | 700MM | 750MM | 700MM |
| Depth of illumination (L1+L2) @ 20 % | 1400MM | 1300MM | 1400MM | 1300MM |
| Class Of Protective | IP55 | IP55 | IP55 | IP55 |
| Main Material | Aluminum Alloy | Aluminum Alloy | Aluminum Alloy | Aluminum Alloy |
| Rotation | 540° | 540° | 540° | 540° |
| 4.3" TFT LCD Touch Screen | Optional | Optional | Optional | Optional |
| Dynamic Obstacle Compensation | Optional | Optional | Optional | Optional |
| Back Up Rechargeable Battery | Optional | Optional | Optional | Optional |
| Internal Sony Camera 20X | Optional | Optional | Optional | Optional |
| Remote Control | Optional | Optional | Optional | Optional |
| LED Brand | OSRAM | OSRAM | OSRAM | OSRAM |

Additional Equipment and Functions



Integrated video system

Operating lights Max-LED can be equipped with video camera, fixed in the center of the light. Optionally the lights can be delivered with standard sterile, plastic handle, to be exchanged into handle with camera in the future.
Sony camera, Full 1920 x 1080/30p High Definition, adjustable from keyboard.

| Camera Specifications | Details |
|--------------------------|---|
| Image Device | 1/2.8 type Exmor™ CMOS sensor (SONY Brand) |
| Effective Pixels | Approx. 2 million |
| Digital Zoom | 20X Optical Zoom, 12X Digital Zoom |
| Horizontal Viewing Angle | 54.1° (wide end) to 2.9° (tele end) |
| Sync System | Internal |
| Electronic Shutter | 1/2 to 1/10,000 s |
| White Balance | Auto |
| Focus System | Auto |
| Exposure Control | AE Control: Auto, Manual, Priority (shutter priority and iris priority) |
| Video Output | Details |
| Lens Value | 20x Optical Zoom, f=4.7 mm (wide) ~ 94.0 mm (tele), f1.6 to f3.5 |
| S/N Ratio More | More than 50 dB |
| Signal System | Signal System HD: 1080p/29.97, 1080p/25, 1080i/59.94, 1080i/50, 720p/50, 720p/29.97, 720p/25 SD: NTSC/PAL |

High Image Quality

- Camera With 20X Optical Zoom With 1920*1080P HD Soluton
- Finely Textured Images With Clear, Sharp Cplors
- Remarkably Better Colors For Better Attention To Detail And A Brilliant Rendition



Ultra High Definition

- Exmor R Sensor - Clearer Images In Every Condition
- Twice As Sensitive As Coneventional Sensors
- Higher Image Quality In Low Light Conditions

Easy Handling

- Easy Installation And Modification Or Retrofitting Of Existing OR Light Systems
- Mechanical And Electronical Image Rotation
- FI:exible And Indepent Operation Via Remote Control
- Optional Operation Via Wall Control Unit



CONSISTENTLY TOP-NOTCH PRODUCT QUALITY

In recent years, we have developed to become one of the world's leading producers of hospital solutions. We operate and produce according to our philosophy "Pushing Technology to Excellence" at all times. Our work is based on three pillars: innovation, global footprint



Innovative solutions

For MICARE, innovation means adding value to the customer. MICARE products provide a great deal of flexibility, and our numerous patents are testament to their exceptional level of technical innovation; these qualities have helped MICARE become a key company in medical technology.



Diversification

MICARE has continuously been developing new and innovative products since its foundation, always in line with MICARE's philosophy as a solution provider for the hospital with focus on the OR.



Global

As an internationally operating company, we sell in more than 90 countries-world wide.



Cooperation

Being a reliable business partner



NANCHANG MICARE MEDICAL EQUIPMENT CO.,LTD.

Tel: 86-791-88127989

Add: Yaohu West 5th Road, Hi-Tech Zone, Nanchang, Jiangxi, China

**CE, ISO13485, ISO9001, FDA,
FREE SALE CERTIFICATE**

MICARE MEDICAL WE OFFER EXCELLENCE FOR YOUR HOSPITAL

As a surgical lighting solution provider, MICARE Medical has more than 20 years of experience, great innovative capacity and invaluable know-how for medical technology solutions. Thank to our proximity to our customers and understanding of their needs, we guarantee you excellent products.



MICARE POWERLED

- Aluminum Lamp Housing
- High Color Rendering Index
- Uniform And Round Focus
- Life Time: $\geq 80,000$ hrs
- Safety Explosion-Proof

BRILLIANT BY DESIGN

The MICARE PowerLED Surgical Lighting System Provides Meaningful, Clinician-Inspired Advances To Keep Up With Life In Today's OR.

Through Thoughtful Innovation, This Future-Ready System Offers Superior Optical Performance, Laminar Airflow Design

Full Intergration To The OR Environment From Conventional To Theatre Rooms

MICARE PowerLED ensures the clearest and brightest light for surgeons, without distractions from glare.

Allows equipment to be positioned within reach of the surgeon, concealing wires and cables to improve safety and hygiene. Equipment can be easily added, removed and upgraded to meet future requirements.

Thanks to MICARE Power LED High-quality illumination helps to relieve strain, Comfort Light feature, improves visual performance, reduces the sensation of glare and increases the feeling of wakefulness leading to a better working environment

Micare PowerLED 700/500

Evolving Design, Revolutionary Features

Near Perfect Colour Rendition with white and yellow LEDS mix
For the best visualisation of tissue during surgery.

Widely Beam Technology From 15CM-35CM
The largest light beams of any current product with high intensity across the full beam width.

Unique Comfort
A soft illumination of light to reduce eye strain from high contrasts of light intensity.



Designed to Minimise Infections
Easy to clean, sealed light head, remote controls and anti-microbial coatings.

HDI-SDI Camera Optional, Integrated cameras are fully enclosed inside the light head, records for risk, management, and optimize understanding and learning.

Maximum illumination up to 180,000 lux
Stable and constant illumination
Enhanced visibility, diagnosis and treatment



Endoscopy Mode In Deep Illumination
For Various Operation Enviromental



Astro Space Design, Working seamlessly
with laminar airflow solutions



Removable Sterilizaer Handle Can Be
Easily For Internal Camera



5.1 INCHES LCD Touch Panel Optional
(OEM With LOGO Print Available)



| MICARE PowerLED Model | E700/700 | E700/500 | E500/500 |
|-------------------------------------|-------------------------------|-------------------------------|-------------------------------|
| Voltage | 95~245V, 50/60HZ | 95~245V, 50/60HZ | 95~245V, 50/60HZ |
| Illuminance at distance of 1 m(LUX) | 60,000-180,000/60,000-180,000 | 60,000-200,000/40,000-180,000 | 40,000-180,000/40,000-180,000 |
| Brightness Adjustable | 10-100% | 10-100% | 10-100% |
| Lamp Head Diameter | 700MM/700MM | 700MM/500MM | 500MM/500MM |
| Quantity Of LEDS | 80PCS/80PCS | 80PCS/48PCS | 48PCS/48PCS |
| Color Temperature Adjustable | 3800-5500K | 3800-5500K | 3800-5500K |
| Color rendering index Ra | 96 | 96 | 96 |
| Color rendering index R9(Red) | 98 | 98 | 98 |
| Light Field Size Adjustable | 150-350MM/150-350MM | 150-350MM/120-280MM | 120-280MM/120-280MM |
| Total radiant flux density | 364W/m2 | 364W/m2 | 364W/m2 |
| Endoscopy Mode | YES | YES | YES |
| Endoscopy Mode LEDS | 8PCS/8PCS | 8PCS/8PCS | 8PCS/8PCS |
| Illumination For Endo-Mode | 10% | 15% | 18% |
| LED service life | 80,000hrs | 80,000hrs | 80,000hrs |
| Main Material | Aluminum | Aluminum | Aluminum |
| Rotating Angle Of Arm | >540° | >540° | >540° |
| LED Bulb Power | 1w Each Pc | 1w Each Pc | 1w Each Pc |
| Input Power | 400w | 400w | 400w |
| Operating element | Touch Control | Touch Control | Touch Control |
| Light head protection rating | IP54+FireProof | IP54+FireProof | IP54+FireProof |
| Depth of illumination L1+12 | 1400MM | 1200MM | 1100MM |
| Lamp weight | 700+700=52KGS | 700+500=49KGS | 500+500=46KGS |
| Packing | 3 Wooden Cartons | 3 Wooden Cartons | 3 Wooden Cartons |
| LCD Touch Screen | Optional | Optional | Optional |
| Back Up Battery (4-6hrs) | Optional | Optional | Optional |
| Shadow Compensation Function | Optional | Optional | Optional |
| Internal/External Sony Camera(20X) | Optional | Optional | Optional |
| Monitor With Extra Arm(22 Inches) | Optional | Optional | Optional |
| LED Bulb Diameter | 20MM | 20MM | 20MM |

| MICARE PowerLED Model | E700 | E500 |
|-------------------------------------|------------------|------------------|
| Voltage | 95~245V, 50/60HZ | 95~245V, 50/60HZ |
| Illuminance at distance of 1 m(LUX) | 60,000-200,000 | 40,000-180,000 |
| Brightness Adjustable | 10-100% | 10-100% |
| Lamp Head Diameter | 700MM | 500MM |
| Quantity Of LEDS | 80PCS | 48PCS |
| Color Temperature Adjustable | 3800-5500K | 3800-5500K |
| Color rendering index Ra | 96 | 96 |
| Color rendering index R9(Red) | 98 | 98 |
| Light Field Size Adjustable | 150-350MM | 120-280MM |
| Total radiant flux density | 364W/m2 | 364W/m2 |
| Endoscopy Mode | YES | YES |
| Endoscopy Mode LEDS | 8PCS | 8PCS |
| Illumination For Endo-Mode | 10% | 18% |
| LED service life | 80,000hrs | 80,000hrs |
| Main Material | Aluminum | Aluminum |
| Rotating Angle Of Arm | >540° | >540° |
| LED Bulb Power | 1w Each Pc | 1w Each Pc |
| Input Power | 400w | 400w |
| Operating element | Touch Control | Touch Control |
| Light head protection rating | IP54+FireProof | IP54+FireProof |
| Depth of illumination L1+12 | 1400MM | 1100MM |
| Lamp weight | 700+700=52KGS | 500+500=46KGS |
| Packing | 3 Wooden Cartons | 3 Wooden Cartons |
| LCD Touch Screen | Optional | Optional |
| Back Up Battery (4-6hrs) | Optional | Optional |
| Shadow Compensation Function | Optional | Optional |
| Internal/External Sony Camera(10X) | Optional | Optional |
| Monitor With Extra Arm(21 Inches) | Optional | Optional |
| LED Bulb Diameter | 20MM | 20MM |





| MICARE PowerLED Model | E700L(Battery Optional) | E500L(Battery Optional) |
|-------------------------------------|-------------------------|-------------------------|
| Voltage | 95~245V, 50/60HZ | 95~245V, 50/60HZ |
| Illuminance at distance of 1 m(LUX) | 60,000-200,000 | 40,000-180,000 |
| Brightness Adjustable | 10-100% | 10-100% |
| Lamp Head Diameter | 700MM | 500MM |
| Quantity Of LEDS | 80PCS | 48PCS |
| Color Temperature Adjustable | 3800-5500K | 3800-5500K |
| Color rendering index Ra | 96 | 96 |
| Color rendering index R9(Red) | 98 | 98 |
| Light Field Size Adjustable | 150-350MM | 90-260MM |
| Total radiant flux density | 364W/m ² | 364W/m ² |
| Endoscopy Mode | YES | YES |
| Endoscopy Mode LEDS | 8PCS | 8PCS |
| Illumination For Endo-Mode | 10% | 18% |
| LED service life | 80,000hrs | 80,000hrs |
| Main Material | Aluminum | Aluminum |
| Rotating Angle Of Arm | >54° | >54° |
| LED Bulb Power | 1w Each Pc | 1w Each Pc |
| Input Power | 400w | 400w |
| Operating element | Touch Control | Touch Control |
| Light head protection rating | IP54+FireProof | IP54+FireProof |
| Depth of illumination L1+12 | 1400MM | 1100MM |
| Lamp weight | 700+700=52KGS | 500+500=46KGS |
| Packing | 3 Wooden Cartons | 3 Wooden Cartons |
| LCD Touch Screen | Optional | Optional |
| Back Up Battery (4-6hrs) | Optional | Optional |
| Shadow Compensation Function | Optional | Optional |
| Internal/External Sony Camera (20X) | Optional | Optional |
| Monitor With Extra Arm (22 Inches) | Optional | Optional |
| LED Bulb Diameter | 20MM | 20MM |



Redefine optical performance Aerospace-based design

How can you deliver more clean airflow to your patient during a surgical procedure? The Osram Power LED allows unobstructed flow of clean air through the lighthouse to dissipate accumulated heat and surgical smoke. Working seamlessly with laminar airflow solutions, it decreases air turbulence through its unique airfoil design. Aerospace-based design, We've learned from the best in the aerospace industry for a design that mitigates airflow turbulence while delivering clean air to the patient.

Lightweight aluminum construction
The suspension weights approximately
30% less than previous generations
of steel arms.

Micare Power LED E700/500 CAMERA AND VIDEO SYSTEM

THE NEW DIMENTSION IN VIDEO IMAGES

CAMERA (INTERNAL & EXTERNAL)

More Details, Bettery Visualization

Fascinating Images-With Clear, Sharp Contrours



High Image Quality

- Camera With 10X Optical Zoom With 1950*1080P HD Soluton
- Finely Textured Images With Clear, Sharp Cplors
- Remarkably Better Colors For Better Attention To Detail And A Brilliant Rendition

Ultra High Definition

- Exmor R Sensor - Clearer Images In Every Condition
- Twice As Sensitive As Coneyentional Sensors
- Higher Image Quality In Low Light Conditions

Easy Handling

- Easy Installation And Modification Or Retrofitting Of Existing OR Light Susters
- Mechanical And Electronical Image Rotation
- Fl;exible And Indepent Operation Via Remote Control
- Optional Operation Via Wall Control Unit



IMAGE SENSOR

SONY 1/2 8TYPE "EXMOR" CMOS, SUPPORT PROGRESSIVE MODE

IMAGE SOLUTION

1920*1080P, APPROX, 2,140,000 PIXELS

VIDEO OUTPUTS

20X OPTICAL ZOOM, 12X DIGITAL ZOOM

ASPECT VIDEO

SDI

FOCUS OPERATING

16:9

WHITE BALANCE

MANUAL & AUTO

REMOTE CONTROL

AUTO, ATW, INDOOR, OUTDOOR, ONE, PUSH WB, MANUAL WB

WIRELESS REMOTE CONTROL

STANDARD ACCESSORIES

HARD DISK FOR STORE

1T

POWER

6.8W

VOLTAGE

DC12-30W, 1.5A

INSTALLATION

INTERNAL & EXTERNAL OPTIONAL

MONITOR

22INCHES HANGING WITH ARM

SOUND COLLECTION

STANDARD



E700/700
Internal Camera



E700/500
Internal Camera



E500/500
Internal Camera



E700
Internal Camera



E500
Internal Camera



E700
Internal Camera



E500
Internal Camera



E700/700
External Camera



E700/500
External Camera



E500/500
External Camera



E700
External Camera



E500
External Camera





Future-ready to evolve with you

What if you had a lighting system that was modular, upgradeable, and expandable so that it could meet your ongoing needs with ease? You've found it. There are ways to customize this system today and in the future.

All of us here at MICARE are committed to you



SIMPLY INGENUOUS

What if you had illumination in the OR that simply supported you throughout each surgical procedure? The MICARE PowerLED does this, delivering excellent color, contrast, clarity, and control.

A unique peninsula design provides optimal illumination at the surgical site, including deep cavity procedures. Advances in LED technology mean that the MICARE Powerled is able to optimize illumination through fewer LEDs than in the past.

You focus on patients. We focus on you. MICARE Lighting solutions bring together people and technology so that you have exactly what you need, when you need it, for the intelligent OR of today and tomorrow. From project design to implementation to service support, your success is our highest priority.

LIGHTING
EXPERIENCE

Surgical Solutions

Surgical Lighting

FLOWER LED
Surgical Lighting System

Brighten your Expertise



One Integrated Approach to Healthcare



Adjustable colour temperature: For Your Visual Comfort

FLOWER LED surgical lighting with adjustable colour temperatures retains all the benefits of white LEDs while offering additional functions. Selecting from 4 calibrated colour temperatures, the user can choose a light adapted to their visual sensitivity and preferences - warmer colours aiming towards orange, or cooler tones, aiming towards warm white. Depending on the type of surgery, the surgical team can easily adapt the color



3 500 K
Ra=95 / R9=91



4 000 K
Ra=95 / R9=97



4 500 K
Ra=95 / R9=97



5 000 K
Ra=95 / R9=97

Homogeneous and constant quality of light across the different colour temperatures and over time.

How Does that Work?

Optimal Duo of White&Yellow LEDs

Contrary to the light generated by a combination of coloured LEDs (green, red, blue...) which have a tendency to decline over time and need regular recalibration to conserve its properties, FLOWER LED surgical lights with adjustable colour temperature option is obtained by combining white LEDs and yellow LEDs with different colour temperatures.

PRACTICAL ASPECTS CUSTOMER-ORIENTED

Flexible system

The light, camera and monitor arm with considerable swiveling and tilting range for all commercially available screens can be attached to an individual ceiling suspension and are lightweight and safe to position. 4 arms can be used per ceiling support unit.

*Performance + 10% according to IEC60601-2-41 / **Performance 0/-10% according to IEC60601-2-41 / ***Performance + 6% according to IEC60601-2-41

TECHNICAL SHEET

MICARE FLOWER LED



**FLOWER LED
E700/700**



**FLOWER LED
E500/500**



**FLOWER LED
E700/500**



**FLOWER LED
E700**



**FLOWER LED
E500**

| FLOWER LED Model | E700/700 | E700/500 | E500/500 | E700 | E500 |
|-------------------------------------|-------------------------------|-------------------------------|-------------------------------|-------------------|-------------------|
| Voltage | 95~245V , 50/60HZ | 95~245V , 50/60HZ | 95~245V , 50/60HZ | 95~245V , 50/60HZ | 95~245V , 50/60HZ |
| Illuminance at distance of 1 m(LUX) | 93,000-160,000/93,000-160,000 | 93,000-160,000/83,000-140,000 | 83,000-140,000/83,000-140,000 | 93,000-160,000 | 83,000-140,000 |
| Brightness Adjustable | 0-100% | 0-100% | 0-100% | 0-100% | 0-100% |
| Lamp Head Diameter | 700MM/700MM | 700MM/500MM | 500MM/500MM | 700MM | 500MM |
| Quantity Of LEDS | 61PCS/61PCS | 61PCS/39PCS | 39PCS/39PCS | 61PCS | 39PCS |
| Color Temperature Adjustable | 3800-5500K | 3800-5500K | 3800-5500K | 3800-5500K | 3800-5500K |
| Color rendering index Ra | 96 | 96 | 96 | 96 | 96 |
| Color rendering index R9(Red) | 98 | 98 | 98 | 98 | 98 |
| Light Field Size Adjustable | 150-350MM/150-350MM | 150-350MM/90-260MM | 90-260MM/90-260MM | 150-350MM | 90-260MM |
| Total radiant flux density | 364W/m2 | 364W/m2 | 364W/m2 | 364W/m2 | 364W/m2 |
| Endoscopy Mode | YES | YES | YES | YES | YES |
| Endoscopy Mode LEDS | 6PCS/6PCS | 6PCS/6PCS | 6PCS/6PCS | 6PCS | 6PCS |
| Illumination For Endo-Mode | 10% | 12% | 15% | 10% | 15% |
| LED service life | 50,000hrs | 50,000hrs | 50,000hrs | 50,000hrs | 50,000hrs |
| Main Material | Aluminum | Aluminum | Aluminum | Aluminum | Aluminum |
| Rotating Angle Of Arm | >540° | >540° | >540° | >540° | >540° |
| LED Bulb Power | 1w Each Pc | 1w Each Pc | 1w Each Pc | 1w Each Pc | 1w Each Pc |
| Input Power | 400w | 400w | 400w | 400w | 400w |
| Operating element | Touch Control | Touch Control | Touch Control | Touch Control | Touch Control |
| Light head protection rating | IP54+FireProof | IP54+FireProof | IP54+FireProof | IP54+FireProof | IP54+FireProof |
| Depth of illumination L1+12 | 1400MM | 1200MM | 1100MM | 1400MM | 1100MM |
| Lamp weight | 700+700=52KGS | 700+500=49KGS | 500+500=46KGS | 700+700=52KGS | 500+500=46KGS |
| Packing | 3 Wooden Cartons | 3 Wooden Cartons | 3 Wooden Cartons | 3 Wooden Cartons | 3 Wooden Cartons |
| LCD Touch Screen | Optional | Optional | Optional | Optional | Optional |
| Back Up Battery (4-6hrs) | Optional | Optional | Optional | Optional | Optional |
| Shadow Compensation Function | Optional | Optional | Optional | Optional | Optional |
| Internal/External Sony Camera(10X) | Optional | Optional | Optional | Optional | Optional |
| Monitor With Extra Arm(21 Inches) | Optional | Optional | Optional | Optional | Optional |
| Wall Mounted Control) | Optional | Optional | Optional | Optional | Optional |



TECHNICAL SHEET

MICARE FLOWER LED



**FLOWER LED
E700L**



**FLOWER LED
E700L+BATTERY**



**FLOWER LED
E500L**



**FLOWER LED
E500L+BATTERY**

| FLOWER LED Model | E700 | E500 |
|-------------------------------------|---------------------|---------------------|
| Voltage | 95~245V, 50/60HZ | 95~245V, 50/60HZ |
| Illuminance at distance of 1 m(LUX) | 93,000-180,000 | 83,000-160,000 |
| Brightness Adjustable | 10-100% | 10-100% |
| Lamp Head Diameter | 700MM | 500MM |
| Quantity Of LEDS | 80PCS | 48PCS |
| Color Temperature Adjustable | 3800-5000K | 3800-5000K |
| Color rendering index Ra | 96 | 96 |
| Color rendering index R9(Red) | 98 | 98 |
| Light Field Size Adjustable | 150-350MM | 90-260MM |
| Total radiant flux density | 364W/m ² | 364W/m ² |
| Endoscopy Mode | YES | YES |
| Endoscopy Mode LEDS | 16PCS | 16PCS |
| Illumination For Endo-Mode | 20% | 25% |
| LED service life | 50,000hrs | 50,000hrs |
| Main Material | Aluminum | Aluminum |
| Rotating Angle Of Arm | >540° | >540° |
| LED Bulb Power | 1w Each Pc | 1w Each Pc |
| Input Power | 400w | 400w |
| Operating element | Touch Control | Touch Control |
| Light head protection rating | IP54+FireProof | IP54+FireProof |
| Depth of illumination L1+12 | 1400MM | 1100MM |
| Lamp weight | 700+700=52KGS | 500+500=46KGS |
| Packing | 3 Wooden Cartons | 3 Wooden Cartons |
| LCD Touch Screen | Optional | Optional |
| Back Up Battery (4-6hrs) | Optional | Optional |
| Shadow Compensation Function | Optional | Optional |
| Internal/External Sony Camera(10X) | Optional | Optional |
| Monitor With Extra Arm(21 Inches) | Optional | Optional |
| Wall Mounted Control) | Optional | Optional |



Energy Efficiency

Operating costs for ventilation ceilings and air-conditioning systems are reduced due to low surface temperature of <math><27.5^{\circ}\text{C}</math>

Service / Maintenance

Service and maintenance are aided by the D-A-S (Data Analysis System), for determining operating hours and other functional concerns



Technology

Lens combination was developed with primary and secondary optics for light bundling. We use high-performance LEDs with a maximum color rendering index. Color temperature is variable, and the illumination intensity is dimmable

Optimized View

Endoscopy mode provides improved contrast for surgeons using imaging procedures. Monitor reflection is reduced during endoscopic procedures while offering adequate background lighting to support the orientation of the entire surgical team

Color Temperature Selection

Color temperature selection can be set individually for Flower LED. There are three levels from 3,800 K to 5,500 K, yielding high-contrast light for different types of tissue

Light

Flower LED Illumination in both area and depth is optimal and shadow-free, with the ideal ratio of luminaire to light field diameter. Provides a natural color-rendering index with white light (Ra of 96 at all light levels, R9 of 98 in the red region). It can be regulated to 160,000 lx

Hygiene

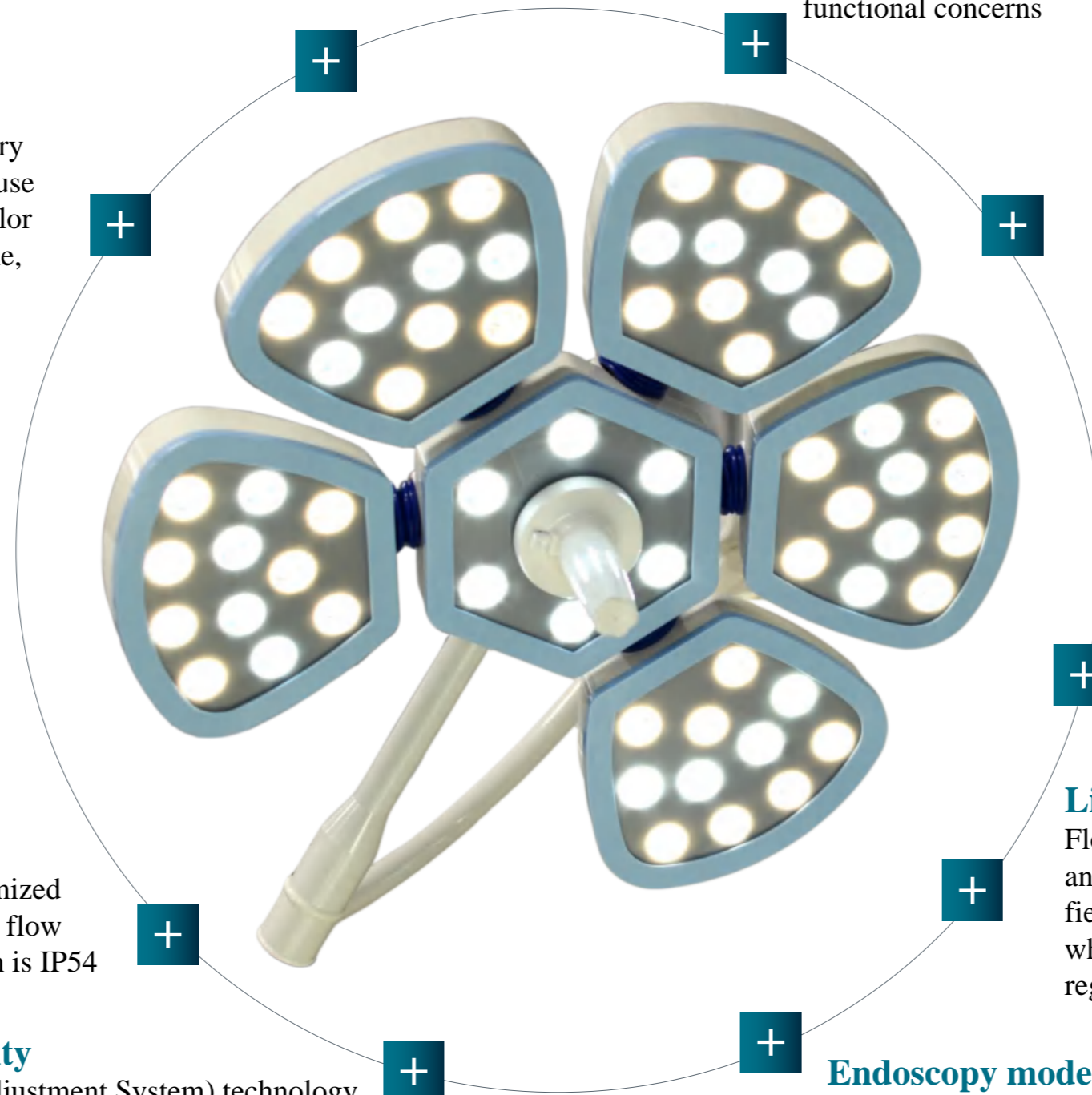
Flower LED include a flow-optimized luminaire housing for laminar air flow ceilings. The degree of protection is IP54

Sustainability

LAS (Light Adjustment System) technology creates 100% lighting power, even after many years of use

Endoscopy mode

Switch to White LEDs for optimum endoscopic intervention conditions



CAMERA (INTERNAL & EXTERNAL)
More Details, Better Visualization
Fascinating Images-With Clear, Sharp Contrours



High Image Quality

- Camera With 10X Optical Zoom With 1950*1080P HD Soluton
- Finely Textured Images With Clear, Sharp Cplors
- Remarkably Better Colors For Better Attention To Detail And A Brilliant Rendition

Ultra High Definition

- Exmor R Sensor - Clearer Images In Every Condition
- Twice As Sensitive As Conventional Sensors
- Higher Image Quality In Low Light Conditions

Easy Handling

- Easy Installation And Modification Or Retrofitting Of Existing OR Light Sustems
- Mechanical And Electronical Image Rotation
- Flexible And Indepent Operation Via Remote Control
- Optional Operation Via Wall Control Unit



| | |
|-------------------------|---|
| IMAGE SENSOR | SONY 1/2 8TYPE "EXMOR" CMOS, SUPPORT PROGRESSIVE MODE |
| IMAGE SOLUTION | 1920*1080P, APPROX, 2,140,000 PIXELS |
| VIDEO OUTPUTS | 10X OPTICAL ZOOM, 12X DIGITAL ZOOM |
| ASPECT VIDEO | SDI |
| FOCUS OPERATING | 16:9 |
| WHITE BALANCE | MANUAL & AUTO |
| REMOTE CONTROL | AUTO, ATW, INDOOR, OUTDOOR, ONE, PUSH WB, MANUAL WB |
| WIRELESS REMOTE CONTROL | STANDARD ACCESSORIES |
| HARD DISK FOR STORE | 1T |
| POWER | 6.8W |
| VOLTAGE | DC12-30W, 1.5A |
| INSTALLATION | INTERNAL & EXTERNAL OPTIONAL |
| MONITOR | 21INCHES HANGING WITH ARM |
| SOUND COLLECTION | STANDARD |



E700/700
Internal Camera

E700/500
Internal Camera

E500/500
Internal Camera



E700
Internal Camera

E500
Internal Camera



E700
Internal Camera



E500
Internal Camera



E700/700
External Camera

E700/500
External Camera

E500/500
External Camera



E700
External Camera

E500
External Camera



FLOWER LED
SMART INNOVATION



**ICE COLD AND EFFICIENT
A NEW GENERATION OF
SURGICAL LIGHTS.**

FLOWER LED

**PERFORMANCE
INNOVATIVE TECHNOLOGY**

FLOWER LED is a new generation of surgical lights. The latest LED technology with user-relevant features can be configured to suit individual requirements and offers the perfect lighting solution.

**ICE COLD AND EFFICIENT
A NEW GENERATION OF
SURGICAL LIGHTS.**

In the operating room, shadow-free lighting that does not change the surrounding climatic conditions and minimally affects air flow is essential. The wide variety of performed procedures calls for extreme flexibility, and equipment must be adaptable to individual requirements at all times. Time for the new Flower LED technology