



生輝  
Shenghui

SHENXIAN SHENGHUI STAINLESS PRODUCTS CO.,LTD

莘县生辉不锈钢制品有限公司





# ABOUT

Shenxian Shenghui Stainless Steel Products Co.,Ltd. is a professional stainless steel products manufacturer and exporter, located in Shenxian County, Liaocheng City, Shandong Province , near to Qingdao Port.and Jinan Airport.

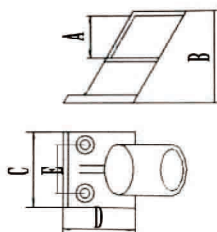
We start manufacturing casting part from 2006, with more than 10 years manufacturing experience. With the increasing demand of stainless steel marine part worldwide, we strive to meet the needs of customers, put into processing work-shops and equipment, Quickly provide customers with personal needs programs.It is a manufacturer integrating production and processing. It is the leading manufacturer in China's stainless steel industry.

We pass ISO9001:2008 quality management system certification, anchor CE certificate, SGS certification. Our factory manufacture the castings and polishing surface treatment, under the support of well designed equipment and high quality precision casting machines.Mainly produce various marine hardware, anchors, castings and stainless steel products, more than 2000 products.

We have established longterm business relationship with clients from North America ,Australia ,Europe and South Korea and Japan Etc .

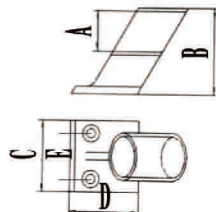
Welcome to visit our factory.

# 支架 BRACKET



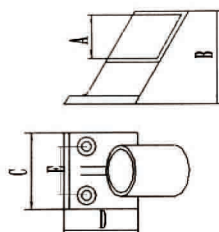
前支架  
front Stanchion 60°

生辉编号/ITEM NO.	名称/PRODUCT NAME	A mm	B mm	C mm	D mm	E mm
SH012-001-22A	22MM前支架	22.6	45	41.5	28	27
SH012-001-25A	25MM前支架	25.8	45	41.5	28	27



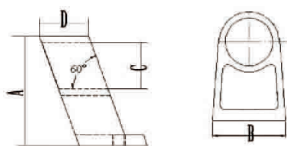
中支架  
Medium Stanchion 60°

生辉编号/ITEM NO.	名称/PRODUCT NAME	A mm	B mm	C mm	D mm	E mm
SH012-001-22B	22MM中支架	22.6	45	41.5	28	27
SH012-001-25B	25MM中支架	25.8	45	41.5	28	27



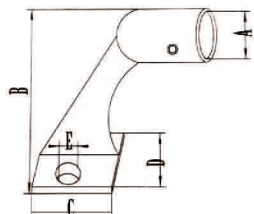
后支架  
Tail Stanchion 60°

生辉编号/ITEM NO.	名称/PRODUCT NAME	A mm	B mm	C mm	D mm	E mm
SH012-001-22C	22MM后支架	22.6	45	41.5	28	27
SH012-001-25C	25MM后支架	25.8	45	41.5	28	27



连体支架  
Heavy Duty Center Stanchion 60°

生辉编号/ITEM NO.	名称/PRODUCT NAME	A mm	B mm	C mm	D mm
SH012-002-1"	连体支架	54	35	25.8	21.8



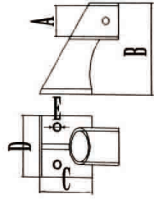
长脖后支架  
Hand Rail 60° tail Stanchion

生辉编号/ITEM NO.	名称/PRODUCT NAME	A mm	B mm	C mm	D mm	E mm
SH012-004-22A	22MM长脖后支架	22.2	65	31	35	5.5
SH012-004-25A	25MM长脖后支架	25.4	65	31	35	5.5



### 长脖中支架

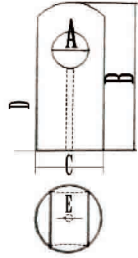
#### Hand Rail Center Stanchion 60°



生辉编号/ITEM NO.	名称/PRODUCT NAME	A mm	B mm	C mm	D mm	E mm
SH012-004-22B	22MM长脖中支架	22.2	65	31	35	5.5
SH012-004-25B	25MM长脖中支架	25.4	65	31	35	5.5

### 通孔支架

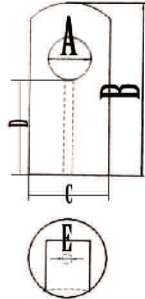
#### Center Handrail Fitting Stanchion



生辉编号/ITEM NO.	名称/PRODUCT NAME	A mm	B mm	C mm	D mm	E mm
SH012-007-22	22MM通孔支架	22.6	59	30.5	31	M8
SH012-007-25	25MM通孔支架	25.6	64	35	32.5	M8

### 盲孔支架

#### Handrail Fitting End Stanchion



生辉编号/ITEM NO.	名称/PRODUCT NAME	A mm	B mm	C mm	D mm	E mm
SH012-007-22M	22MM盲孔支架	22.6	59	30.5	31	M8
SH012-007-25M	25MM盲孔支架	25.6	64	35	32.5	M8

### 小羊蹄子

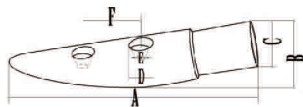
#### Inner Diameter Rail End



生辉编号/ITEM NO.	名称/PRODUCT NAME	A mm	B mm	C mm	D mm	E mm	F mm
SH012-008-7/8"	22MM小羊蹄子	120	39	22.6	8.8	5	42

### 内孔管子小羊蹄

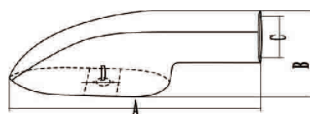
#### Rail End Tubing Handrail



生辉编号/ITEM NO.	名称/PRODUCT NAME	A mm	B mm	C mm	D mm	E mm	F mm	G mm
SH012-009-7/8"	22MM内孔管子小羊蹄	110	29	19.6	22	9.7	5	25.4

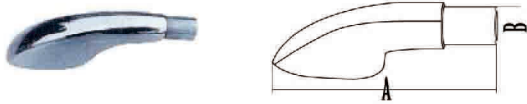
### 羊蹄支架

#### Inner Diameter Rail End



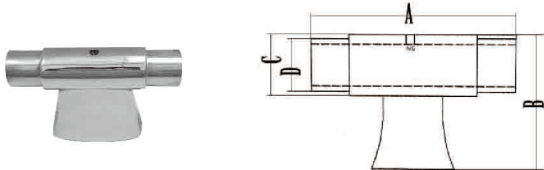
生辉编号/ITEM NO.	名称/PRODUCT NAME	A mm	B mm	C mm	D mm
SH012-010-7/8"	22MM羊蹄支架	175	50	22.5	M6
SH012-010-1"	25MM羊蹄支架	175	51	25.7	M6

内孔羊蹄支架  
Rail End Tubing Handrail



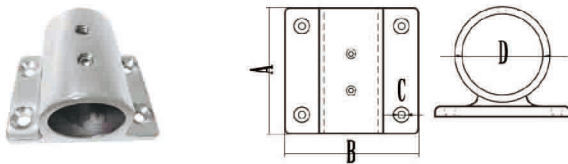
生辉编号/ITEM NO.	名称/PRODUCT NAME	A mm	B mm
SH012-011-1"	内孔羊蹄支架	187.5	25

T型管子支架  
T Style Stanchion



生辉编号/ITEM NO.	名称/PRODUCT NAME	A mm	B mm	C mm	D mm
SH012-012-1"	25MM T型管子支架	100	61	25.5	21.6

方底座支架  
Center Handrail Stanchion



生辉编号/ITEM NO.	名称/PRODUCT NAME	A mm	B mm	C mm	D mm
SH012-013-7/8"	方底座支架	45.3	57.3	5.3	22.4
SH012-013-1"	方底座支架	60.7	45.3	5.3	25.7