



生輝  
Shenghui

SHENXIAN SHENGHUI STAINLESS PRODUCTS CO.,LTD

莘县生辉不锈钢制品有限公司





# ABOUT

Shenxian Shenghui Stainless Steel Products Co.,Ltd. is a professional stainless steel products manufacturer and exporter, located in Shenxian County, Liaocheng City, Shandong Province , near to Qingdao Port.and Jinan Airport.

We start manufacturing casting part from 2006, with more than 10 years manufacturing experience. With the increasing demand of stainless steel marine part worldwide, we strive to meet the needs of customers, put into processing work-shops and equipment, Quickly provide customers with personal needs programs.It is a manufacturer integrating production and processing. It is the leading manufacturer in China's stainless steel industry.

We pass ISO9001:2008 quality management system certification, anchor CE certificate, SGS certification. Our factory manufacture the castings and polishing surface treatment, under the support of well designed equipment and high quality precision casting machines.Mainly produce various marine hardware, anchors, castings and stainless steel products, more than 2000 products.

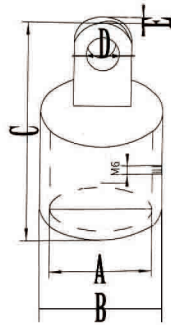
We have established longterm business relationship with clients from North America ,Australia ,Europe and South Korea and Japan Etc .

Welcome to visit our factory.

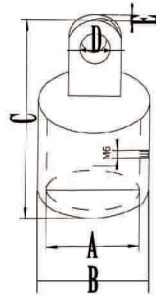
# 滑帽 TOP CAP

## 滑帽

### Eye End Top Cap



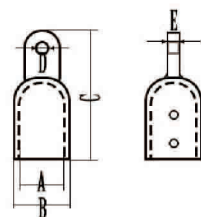
生辉编号/ITEM NO.	名称/PRODUCT NAME	A mm	B mm	C mm	D mm	E mm
SH009-001-3/4"	19MM滑帽	19.5	25	55	6.5	7
SH009-001-20	20MM滑帽	20.5	26.5	55	6.5	7
SH009-001-7/8"	22MM滑帽	22.5	28.8	58	6.5	7
SH009-001-1"	25MM滑帽	25.8	31.8	56	6.5	7
SH009-001-30	30MM滑帽	30.8	37.5	61	6.5	7.2
SH009-001-1 1/4"	32MM滑帽	32.8	39.6	61	6.5	7.2



## 大孔滑帽

### Heavy-Duty Eye End Top Cap

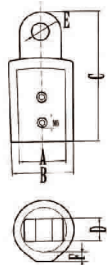
生辉编号/ITEM NO.	名称/PRODUCT NAME	A mm	B mm	C mm	D mm	E mm
SH009-001-25B	25MM重型大孔滑帽	25.8	32.5	57	8.2	7
SH009-001-30B	30MM大孔滑帽	30.8	37.5	61	8.2	7.2
SH009-001-32B	32MM大孔滑帽	32.8	39.6	61	8.2	7.2



## 双顶丝滑帽

### Heavy-Duty Eye End Top Cap

生辉编号/ITEM NO.	名称/PRODUCT NAME	A mm	B mm	C mm	D mm	E mm
SH009-002-22A	7/8"双顶丝滑帽	22.7	29.5	70	6.7	7
SH009-002-25A	1"双顶丝滑帽	25.8	33.2	70	6.7	7



## 加厚双顶丝滑帽

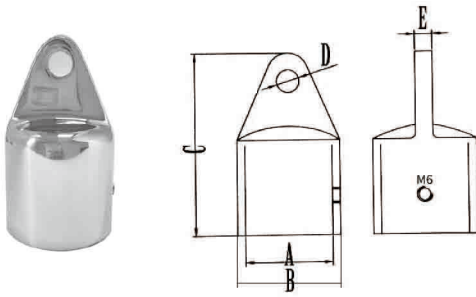
### Heavy-Duty Eye End Top Cap

生辉编号/ITEM NO.	名称/PRODUCT NAME	A mm	B mm	C mm	D mm	E mm	F mm
SH009-002-22B	22MM加厚双顶丝滑帽	22.5	28.5	61	7.2	6.6	5.5
SH009-002-25B	25MM加厚双顶丝滑帽	25.6	30.8	61	7.2	6.6	5.5



## 三角滑帽

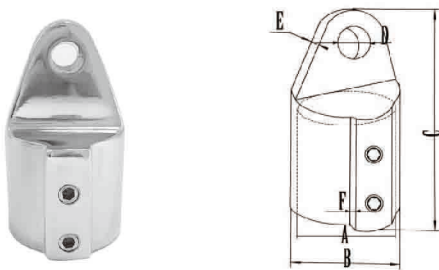
### Eye End Caps Cap



生祥编号/ITEM NO.	名称/PRODUCT NAME	A mm	B mm	C mm	D mm	E mm
SH009-003-7/8"	22MM三角滑帽	22.5	28.5	52.5	6.4	6
SH009-003-1"	25MM三角滑帽	25.7	231.5	54	6.4	6.3
SH009-003-30	30MM三角滑帽	30.5	38	66.5	8	7
SH009-003-1 1/4"	32MM三角滑帽	32.6	40	72	8	7

## 三角加厚双顶丝滑帽

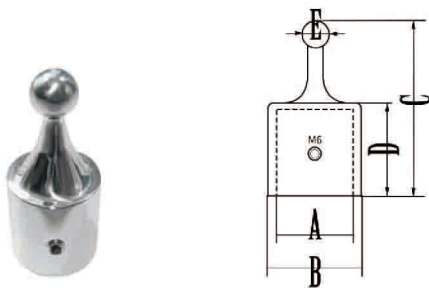
### Heavy-Duty Eye End Top Cap



生祥编号/ITEM NO.	名称/PRODUCT NAME	A mm	B mm	C mm	D mm	E mm	F mm
SH009-004-7/8"	22MM三角加厚双顶丝滑帽	22.6	29	59	6.5	6.2	6
SH009-004-1"	25MM三角加厚双顶丝滑帽	25.8	33	59	5.5	6.2	6
SH009-004-30	30MM三角加厚双顶丝滑帽	30.5	39	72	6.4	6.8	7
SH009-004-1 1/4"	32MM三角加厚双顶丝滑帽	32.4	40	72	6.5	6.8	6

## 圆头滑帽

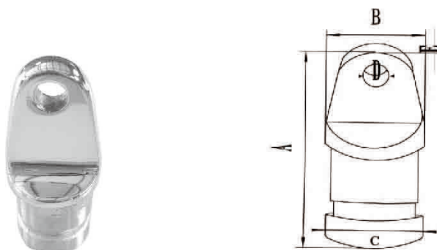
### Top Cap Ball Socket



生祥编号/ITEM NO.	名称/PRODUCT NAME	A mm	B mm	C mm	D mm	E mm
SH009-005-7/8"	22MM圆头滑帽	22.4	27.8	62.5	31	13.85
SH009-005-1"	25MM圆头滑帽	25.6	30.6	68.6	32	13.85

## 堵头滑帽

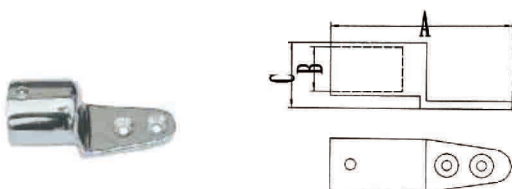
### Bimini Top Fittings Inside Eye End



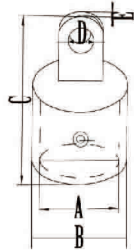
生祥编号/ITEM NO.	名称/PRODUCT NAME	A mm	B mm	C mm	D mm	E mm
SH009-006-7/8"	22MM堵头滑帽	48	22	18.8	6.4	6
SH009-006-1"	25MM堵头滑帽	50	25	21.6	6.8	6

## 支架滑帽

### handrail blind base



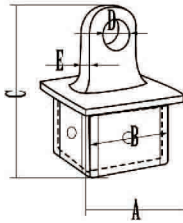
生祥编号/ITEM NO.	名称/PRODUCT NAME	A mm	B mm	C mm
SH009-007-1"	25MM支架滑帽	87	25.8	34.2



### 沉孔滑帽

#### Eye End Top Fitting

生辉编号/ITEM NO.	名称/PRODUCT NAME	A mm	B mm	C mm	D mm	E mm
SH009-008-7/8"	22MM沉孔滑帽	22.6	28.8	60	6.5	6.4
SH009-008-1"	25MM沉孔滑帽	26	32	60	6.5	6.5



### 方管滑帽

#### Square Inside Eye End

生辉编号/ITEM NO.	名称/PRODUCT NAME	A mm	B mm	C mm	D mm	E mm
SH009-009-1 1/4"	32MM方管滑帽	32.3	27.8	45	6.6	6.3