



生輝
Shenghui

SHENXIAN SHENGHUI STAINLESS PRODUCTS CO.,LTD

莘县生辉不锈钢制品有限公司



ABOUT

Shenxian Shenghui Stainless Steel Products Co.,Ltd. is a professional stainless steel products manufacturer and exporter, located in Shenxian County, Liaocheng City, Shandong Province , near to Qingdao Port.and Jinan Airport.

We start manufacturing casting part from 2006, with more than 10 years manufacturing experience. With the increasing demand of stainless steel marine part worldwide, we strive to meet the needs of customers, put into processing work-shops and equipment, Quickly provide customers with personal needs programs.It is a manufacturer integrating production and processing. It is the leading manufacturer in China's stainless steel industry.

We pass ISO9001:2008 quality management system certification, anchor CE certificate, SGS certification. Our factory manufacture the castings and polishing surface treatment, under the support of well designed equipment and high quality precision casting machines.Mainly produce various marine hardware, anchors, castings and stainless steel products, more than 2000 products.

We have established longterm business relationship with clients from North America ,Australia ,Europe and South Korea and Japan Etc .

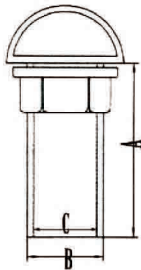
Welcome to visit our factory.

透气孔

TANK VENT

透气孔

Cowl vent



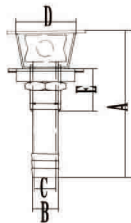
生辉编号/ITEM NO.	名称/PRODUCT NAME	A mm	B mm	C mm
SH024-001-1/2"	1/2寸透气孔	65	21	14.5
SH024-001-3/4"	3/4寸透气孔	65	26	19
SH024-001-1"	1寸透气孔	75	34	26.5
SH024-001-1 1/4"	1 1/4寸透气孔	78	42	35
SH024-001-1 1/2"	1 1/2寸透气孔	83	48	39
SH024-001-2"	2寸透气孔	90	59	50.8



直透气孔

Cowl vent

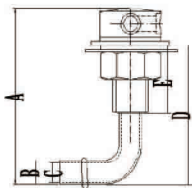
生辉编号/ITEM NO.	名称/PRODUCT NAME	A mm	B mm	C mm	D mm	E mm
SH024-002-01	16mm直透气孔	82	16	12	64	27



带碗直透气孔

Cowl vent

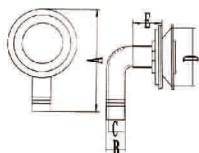
生辉编号/ITEM NO.	名称/PRODUCT NAME	A mm	B mm	C mm	D mm	E mm
SH024-002-02	带碗直透气孔	84	16	12	36	26



弯透气孔

Tank Vent

生辉编号/ITEM NO.	名称/PRODUCT NAME	A mm	B mm	C mm	D mm	E mm
SH024-003-01	16mm弯透气孔	65	16	12	51	27



带碗弯透气孔

Tank Vent

生辉编号/ITEM NO.	名称/PRODUCT NAME	A mm	B mm	C mm	D mm	E mm
SH024-003-02	带碗弯透气孔	84	16	12	36	26