



上海中吉机械有限公司
Shanghai Zhongji Machinery Manufacturing Co.,Ltd.

地址: 上海市嘉定区沪宜公路5931号 邮编: 201800
上海市青浦区新丹路368号 邮编: 201706
Add: No.5931 Huyi Road, Jiading Industry District 201800, Shanghai, China
No.368 Xindan Road, Qingpu Industry District 201706, Shanghai, China
电话 Tel: +86-21-68453855 +86-13916868669
传真 Fax: +86-21-60257160 +86-21-52303508
邮箱 E-mail: info@zhongji.com epsmachinery@hotmail.com
网址 Website: www.zhongji.com www.epsmachine.info



EPS/EPP PRODUCTION LINES

EPS/EPP 连续生产线

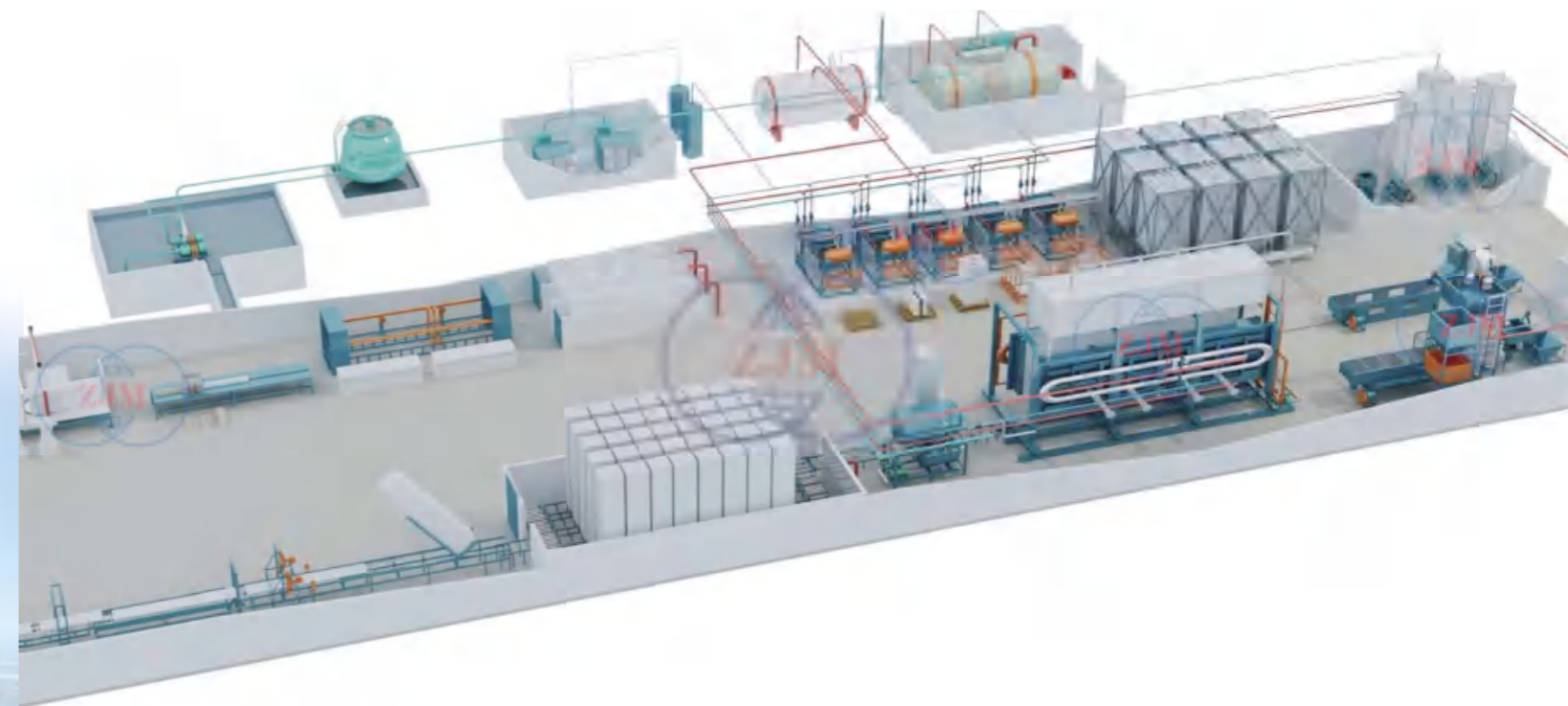
Hi-Tech Machinery



ALESSIO ITALY



SOLITECH KOREA



上海中吉机械有限公司
Shanghai Zhongji Machinery Manufacturing Co.,Ltd.

Zhongji Machinery Co., Ltd. Was founded in 1992

We manufacture EPS, EPP, 3D Panel and PU Sandwich Panel Production Lines.

We are the first drafter of the China National Standards for 3D Panel.

Cooperated with a German manufacturer where the first EPS block molding machine in the world was produced in 1960.

Joint venture with Alessio Hi-Tech, a leading Italian company for shape molding and pre expansion technology of EPS and EPP.

Continuous Sandwich Panel Line with core in Polyurethane, Mineral Wool, Phenolic or EPS.

More than 600 staffs providing prompt services and complete solution for you.

Ten oversea branch offices responsible for the worldwide sales and after-sales services.

The vice President of Chinese Private Enterprises Association and the President of Zhongji, Mr. Gunther Hou, is a well educated and experienced Engineer with a strong command of English.

We are the biggest and most competitive EPS/EPP machinery manufacturer in China.





与坦桑尼亚副总理兼住房与环境部长洽谈投资
Dr. Batilda S. Burian, the Minister of Environment in Tanzania, discussed investment with Zhongji



联合国非洲援助计划署官员洽谈房屋建造材料及设备事宜
Officials from UN discussed construction materials and equipment.



中吉公司的客户可以分享德国先进的EPS板材技术和全球服务
JOTECHNIK Maschinenbau GmbH has the German technology for EPS block molding machinery



与全球顶尖的意大利EPS/EPP设备制造商合作
Joint venture with Italian Alessiohitech S.R.L for shape molding and pre expansion technology of EPS and EPP



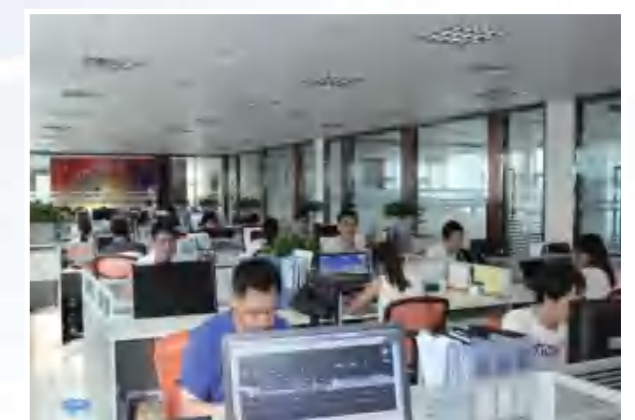
Hu Jin Tao, Chinese president met with Cristina Fernández, the president of the Republic Argentina, in the Great Hall of People.



The president of Argentina met with Sunny Wang, the manager of Shanghai Zhongji Machinery, Cristina Fernández gave high evaluation to Zhongji.



韩国合伙人Mr. Jeung Keun O和Mr. Lee Hwa Young在中吉机械分别任职技术总监和生产部长
Korea partner Mr. Jeung Keun O and Mr. Lee Hwa Young work in Zhongji as the chief engineers.



中吉机械EPS/EPP研发中心
Zhongji R&D Center

上海中吉机械有限公司成立于一九九二年，公司董事长侯树旗先生现担任中国民营企业联合会副会长。公司获得了国家级高新技术企业称号，并被国家商务部认定为定点设备出口制造商。是集EPS/EPP泡沫塑料连续生产线、聚氨酯(PU)/岩棉彩钢夹芯板连续生产线、聚氨酯/酚醛泡沫保温板连续生产线的自主研发、生产、销售和服务于一体的高科技集团型企业，主持编写了3D钢丝网架夹芯板国家标准。公司在上海青浦区和嘉定区设有三个工厂，员工600余名，其中中级以上职称人员80余名，厂区占地面积70,000平方米。

侯树旗先生和JOTECHNIK Maschinenbau GmbH德国董事长MR.Kurt Albrecht于2009年5月在德国签署了在上海合作生产EPS板材机械协议，并同时在德国和中国注册使用JOZJ国际商标，全面升级中吉EPS泡塑机械，共享全球销售和服务网络。

1960年世界上第一台EPS板材成型机在JOTECHNIK Maschinenbau GmbH奥地利厂房里问世，之后共生产了超过200台EPS预发机，500台EPS板材成型机和50台EPS板材切割机。

侯树旗先生和SOLITECH CO.,LTD.韩国社长Mr. Rho Jae Ho于2012年9月在韩国首尔签署了在上海合作生产热固性改性EPS防火保温板生产线协议。韩国公司派驻副社长Mr. Jeung Keun o和专家Mr. Lee Hwa Young在上海，并与中吉机械共享其全部技术资料，运用全套韩国技术生产的EPS板材成型机和EPS外覆膜机，在韩国原有的B1级改性红聚苯板和灰聚苯板的基础上，生产A级或B1级热固性改性EPS防火保温板生产线。

公司总经理李永晖先生和Alessiohitech S.R.L意大利总裁Mr. Gianni Franco Alessio于2012年6月在意大利米兰签署了在上海合作生产EPS和EPP包装成型机械协议。

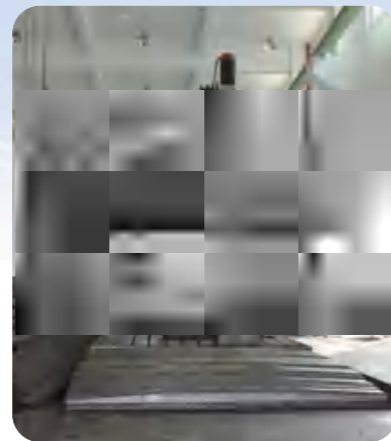
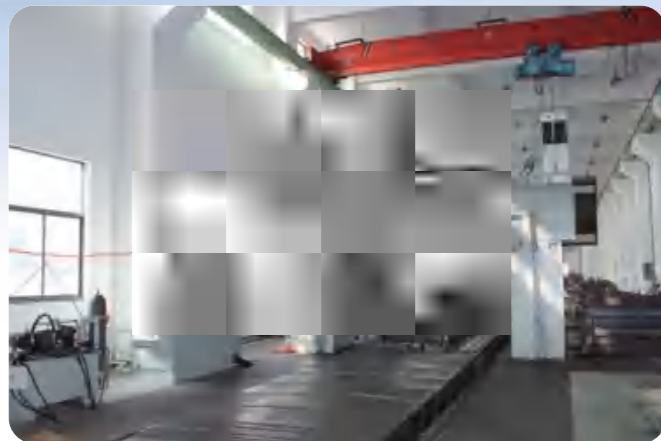
双履带式连续型聚氨酯彩钢夹芯板生产线总长度为170米，生产线可生产不同型号的墙面板、屋面板、门板、冷库板、内外墙装饰一体化板，以及聚氨酯封边岩棉彩钢夹芯板和高标准的岩棉彩钢夹芯板，还可以生产聚氨酯/酚醛保温板，公司同时生产聚氨酯多组份发泡机组和PUR/PIR白料胶水。

岩棉彩钢夹芯板生产线实现了250mm厚高密度岩棉板的条形切割、自动输送、90度翻转以及夹芯板成型后的带锯切割、自动码垛、六面缠绕包装。

公司先后引进一流的多工位加工中心、数控车床、数控铣床等高精度加工设备。如价值450万元的3mx8m龙门加工中心和价值300万元的2.5mx12m龙门铣床，还有焊接结构件的热处理设备、抛丸设备、喷砂设备、喷涂自动化生产线，保证了EPS板材成型机，尤其是EPS包装成型机的四孔定位和互换等高精度要求，也提高了设备的外观质量和使用寿命。

公司秉承“自强不息，厚德载物，坚忍图成，追求卓越”的经营理念，精诚团结，锐意创新，生产的不同规格的EPS/EPP机械已销往90多个国家和地区，设有十个海外办事处，并开辟了国际合作的广阔渠道。公司率先通过了CE认证、ISO9001:2000质量管理体系认证，获得专利50余项。

创新不断的中吉公司是中国EPS/EPP泡沫机械行业的技术先锋和最具规模的专业制造商！



Company Profile



Shanghai Zhongji Machinery Manufacturing Co. Ltd ("Zhongji" in short) was established in 1992. The president of Zhongji, Mr. Gunther Shuqi Hou, is the vice president of Chinese Private Enterprises Association. Our company has 3 factories located at Qingpu and Jiading Industrial Zone in Shanghai which cover a total area of 70,000 square meters of land, with more than 600 staff and workers and there are more than 80 staff have intermediate title of our company.. As the leading and reliable manufacturer of EPS/EPP production lines and PU sandwich panel production Lines, we are mainly engaged in the research & development of our products, machine manufacturing, marketing and service. We are the first drafter of the China National Standards for 3D Panel.

During the past 23 years, we passed and had been approved for the CE certificate, ISO 9001:2000 Quality Management System Certificate, and have more than 50 patents. We have 10 oversea branch offices and sold 20,000 machines to 3000 factories in more than 90 countries.

In May of 2009, Mr. Gunther Hou and the German CEO of JOTECHNIK Maschinenbau GmbH, Mr. Kurt Albrecht, signed an agreement in Germany for the production of EPS block molding machine in Shanghai. We registered and used international brand "JOZJ" both in Germany and China at the same time, and fully upgraded Zhongji EPS foam plastic machine and shared the market & service all over the world.

In 1960, The first EPS block machine was born in Austrian factory of JOTECHNIK Maschinenbau GmbH, which made more than 200 sets of EPS pre-expanders, 5000 EPS block moulding machines and 50 sets EPS cutters after then.

In September of 2012, Mr. Gunther and Mr. Rho Jae Ho, The Chairman of Korean SOLITECH CO.,LTD. signed the agreement to produce Coated EPS Block machine in Shanghai and SOLITECH dispatched the vice chairman, Mr. Jeung Keun O and Mr. Lee Hwa Young, to Shanghai and shared all the technical data with Zhongji. Based on the technology of Korean block machine and coating machine, we increased the block into A class from B1 class.

In June 2012, the General Manager of Zhongji, Mr. Yonghui Li, and the Italian CEO of Alessiohitech S.R.L, Mr. Gianni Franco Alessio, signed an agreement in Milan for the production of EPS/EPP Machines in Shanghai; Surely, the cooperation with Alessiohitech S.R.L has greatly enhanced the quality and customer service system of Zhongji worldwide.

The double belt continuous sandwich panel production line can produce PU fire-proof panels, door panels, PU + Mineral wool sandwich panels, and high standard rock wool sandwich panels. PU high pressure foaming machines have different adjustment ranges. we also produce PU multi-component foam unit and PUR/PIR white glue.

The Mineral Wool Sandwich Panel Production Line has achieved the strip cutting of 250mm thickness of high-density mineral wool panel, automatic conveying, 90 degrees flip and belt saw cutting after panel molding, automatic stacking and six side wrapping of the sandwich panel after production, and can produce different models of wall panels, roof panels, door panels and cold storage panels, etc.

Our company has introduced some first-class multi-station machining centers, CNC lathes, milling machines and other high-precision machining equipments, such as 3mx8m gantry machining center(worth 800,000 USD) and 2.5mx12m milling machine(worth 500,000 USD), as well as the heat treatment of the welded structure, shot blasting, sand blasting, painting automated production lines.

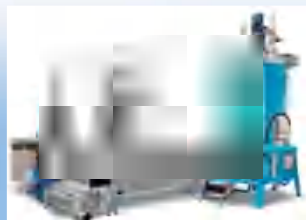
As the pioneer and manufacturer of Sandwich Panel Production Lines, we at Zhongji constantly work hard to improve the quality of our products and services and develop new innovative ideas to keep pace with the current trend in high-end technology in this field; all in the bid to satisfy our valued customers' requirements.

We warmly welcome friends and all those interested in our products and services to visit our factories in Shanghai, China.



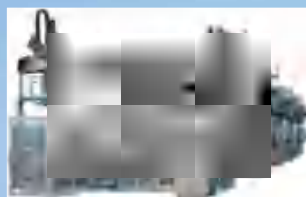
生产设备目录

可发性聚苯乙烯泡沫塑料设备
可发性聚丙烯泡沫塑料设备



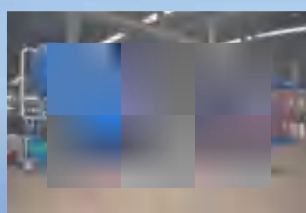
• 预发系列

EPSBE1600、EPSBE1100、EPSBE1200 全自动间歇式预发泡机
EPSCE900、EPSCE1200、EPSCE1600 连续式预发泡机
ALESSIO PE 0.8 DA、1.7/2.5 DA、2.5/4.0 DA、3.0/6.0 DA EPS预发泡机



• 包装成型机系列

ALESSIO PM、PMP、PMT、LT EPS/EPP包装成型机
ALESSIO ICF包装成型机
EPSSM1200、1400、1700、2000 真空全自动包装成型机



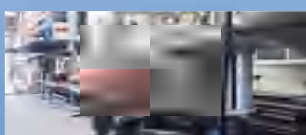
• 板材成型机系列

EPSBM6000V/H、8000V/H 真空全自动板材成型机（平移门型）
EPSBM6000V、6000CV、8000V、8000CV 真空全自动板材成型机
BMC3600V/H、6000V/H 改性EPS板材生产线（韩国技术）
EPSBM6000C/D、6000C/A、6000V/A、8000C/D 自动板材成型机（风冷）
EPSBM3000V、5000V 自动板材成型机（垂直）



• 切割机系列

EPSBC3000、6000、8000、8000/C、8000/V 板材自动切割机（普通、垂直、瓦楞）
EPSBC4000/L、5000/L、6000/L 板材连续切割生产线
EPSCNC2-2000X1240、3000x3000、4000x4000 数控仿形切割机（二维）
EPSCNC3-2000X1240、3000x3000、4000x4000 数控仿形切割机（三维）

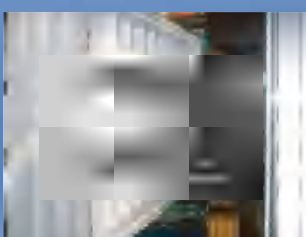


改性EPST4000混合覆膜、涂层、烘干、筛选生产线



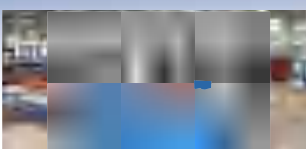
• 回收系统

EPSCR-B/EPSCR-C 破碎机
EPSDD-B 除尘机
EPSMI-B 混合机
EPSTR-B 回收造粒机



• 附属设备及模具系列

EPSPM-B 打包机/EPSSWM-B 缠绕机
酚醛、PU热缩膜打包机
ICF和EPS楼板系统
EPS/EPP标准模框和模具
EPS/EPP熟化仓和烘房



• 3D钢丝网架夹芯板设备

3D-MW-3B、3D-MW-4B 钢丝平网焊接设备
3D-AP-3B、3D-AP-4B 斜插3D板设备

PRODUCTION LINES LIST

EPS (Expandable Polystyrene) Production Lines
EPP (Expandable Polypropylene) Production Lines

• Pre-Expanders Series

EPSBE1600、EPSBE1100、EPSBE1200 EPS/EPP Batch Pre-Expanders -----15-18
EPSCE900、EPSCE1200、EPSCE1600 EPS Continuous Pre-Expanders ----- 20
ALESSIO PE 0.8 DA、1.7/2.5 DA、2.5/4.0 DA、3.0/6.0 DA EPS Pre-Expanders -----21-22

• Shape Molding Machine Series

ALESSIO PM、PMP、PMT、LT EPS/EPP Shape Molding Machines ----- 23-24
ALESSIO ICF Shape Molding Machines ----- 25-26
EPSSM1200、1400、1700、2000 EPS Automatic Vacuum Shape Molding Machines ----- 27-28

• Block Molding Machine Series

EPSBM6000V/H、8000V/H EPS Automatic Vacuum Block Molding Machines(Horizontal & Sliding Door) ----- 29-30
EPSBM6000V、6000CV、8000V、8000CV EPS Automatic Vacuum Block Molding Machines ----- 31-32
BMC3600V/H、6000V/H Coated EPS Production Line (Korea technology) ----- 33-34
EPSBM6000C/D、6000C/A、6000V/A、8000C/D EPS Automatic Air-Cooling Block Molding Machines (Horizontal) ----- 35-36
EPSBM3000V、5000V EPS Automatic Air-Cooling Block Molding Machines (Vertical) ----- 37

• Cutting Machine Series

EPSBC3000、6000、8000、8000/C、8000/V EPS Automatic Block Cutting Machines(Standard, Vertical, Corrugated) --- 38
EPSBC4000/L、5000/L、6000/L EPS Automatic Continuous Block Cutting Production Lines ----- 39-40
EPSCNC2-2000X1240、3000x3000、4000x4000 EPS CNC Shape Cutting Machines(2D) ----- 41
EPSCNC3-2000X1240、3000x3000、4000x4000 EPS CNC Shape Cutting Machines(3D) ----- 42

Coated EPST4000 Fire-Retardant Materials Mixing,Coating,Drying,Screening Line ----- 43-44

• EPS Recycling System

EPSCR-B/EPSCR-C Crusher----- 45
EPSDD-B De-Duster----- 46
EPSMI-B Mixer----- 46
EPSTR-B Thermo-Recycling Machine ----- 47

• Auxiliary Equipment and Moulds Series

EPSPM-B Packaging and EPSSWM-B Wrapping Machines ----- 48
Phenolic、PU Shrink Film Packaging Machines ----- 49
ICF and EPS Deck Floor Systems ----- 50
EPS/EPP Standard Mould Frames and Moulds ----- 51
EPS/EPP Silos and Drying Rooms ----- 52

• 3D Panel Production Lines

3D-MW-3B、3D-MW-4B Steel Wire Mesh Welding Machines ----- 55
A3D-AP-3B、3D-AP-4B ssembling 3D Panel Machines ----- 56



www.zhongji.com

先进的生产工艺 打造顶尖的设备品质

Advanced manufacturing technology creates the top equipment quality.

CE ALESSIO ITALY SK SOLITECH KOREA



中吉公司是中国EPS/EPP机械行业的技术先锋和最具规模的专业制造商
We are the biggest and most competitive EPS/EPP machinery manufacturer in China.



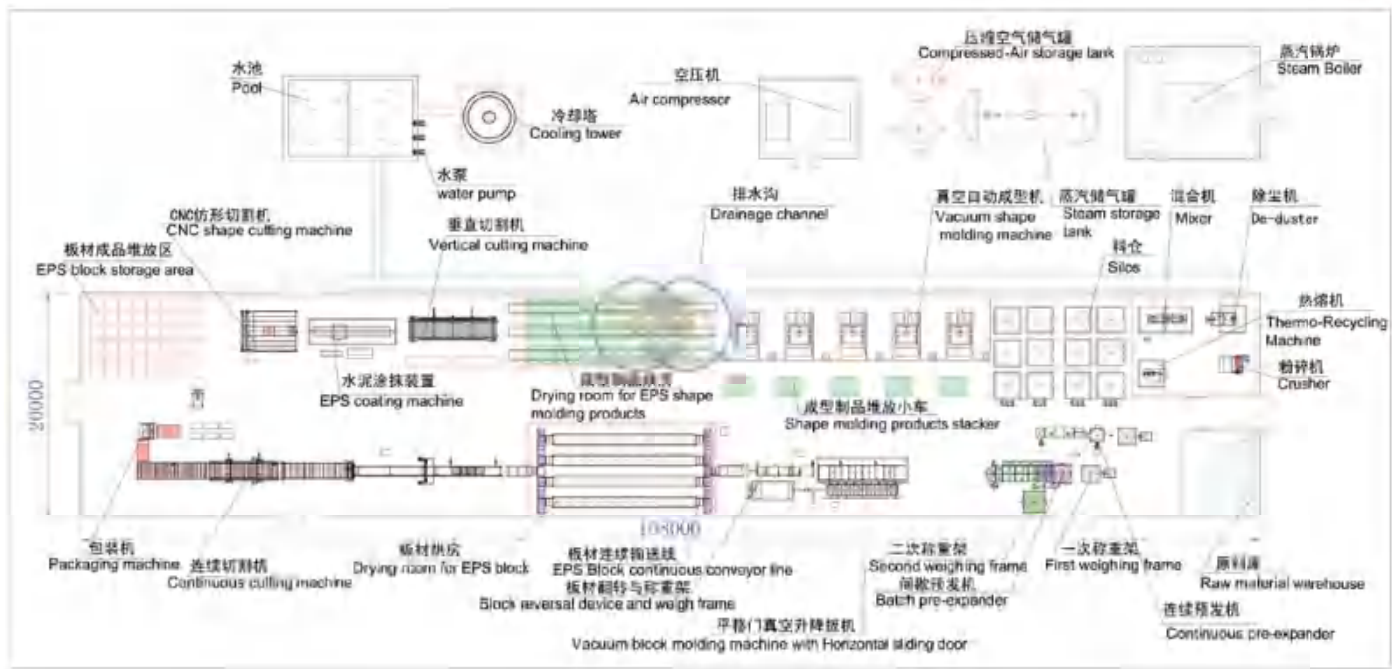
抛丸前 Before polishing 抛丸后 After polishing

价值450万元的3mX8m龙门加工中心，对所有EPS机械的焊接构件进行全方位的铣平，刨槽和所有的开孔，保证了韩国技术的EPS板材成型机和意大利技术的EPS包装成型机的四孔定位和互换等高精度技术，也提高了设备的外观质量和使用寿命。

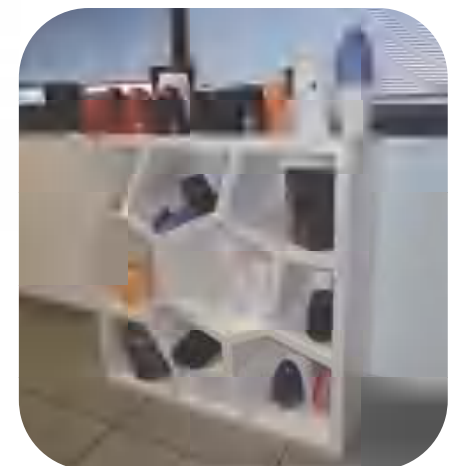
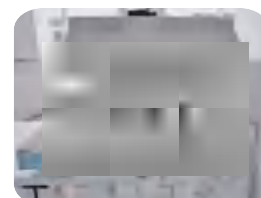
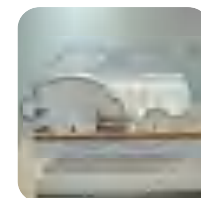
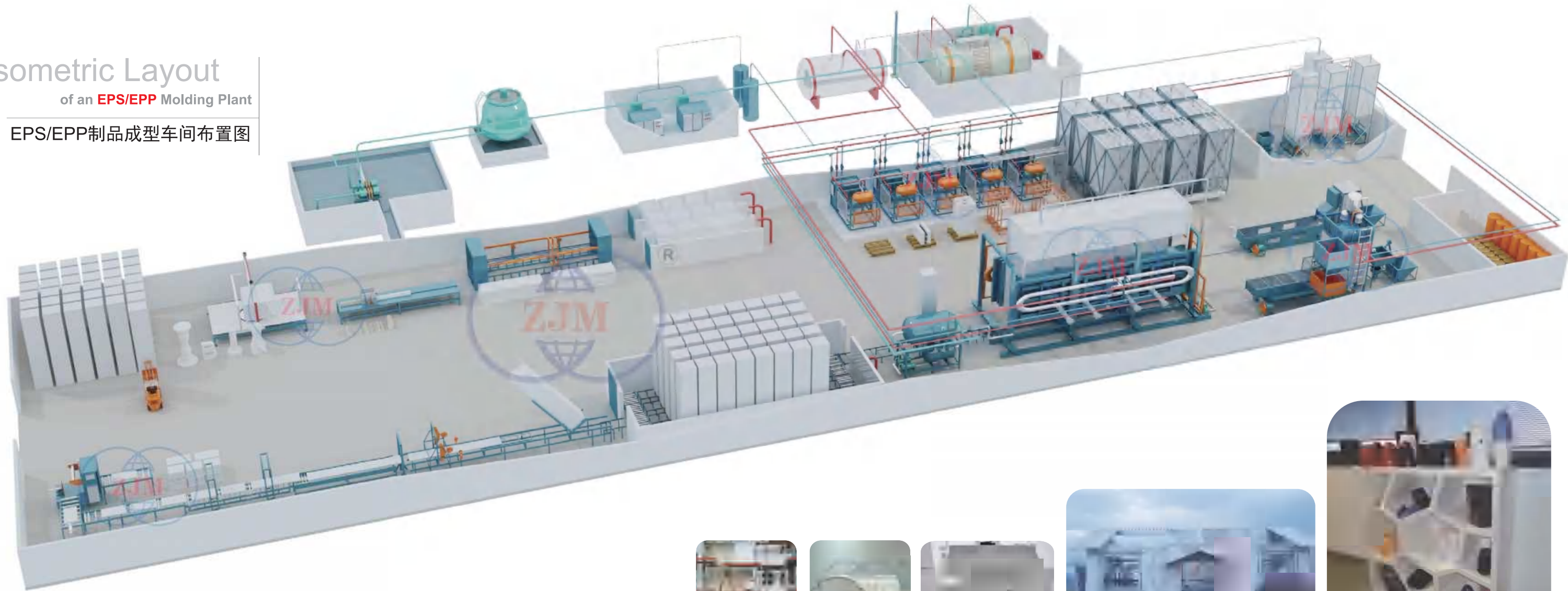
The gantry machining center with the dimension of 3mx8m and valuing \$ 800,000 can process a full range of welding components of all EPS machinery such as milling flat, plane and tre panning. As a result, it ensures the four holes location and interchange high precision technology from South Korean technology of EPS block molding machine and Italian technology of EPS shape molding machine. Meanwhile, it also improvesthe appearance quality and working life of the equipment.

- | | |
|------------|-----------------------------|
| 1.激光切割机下料 | Cutting by laser cutter |
| 2.自动埋弧焊接 | Auto welding |
| 3.工件抛丸处理 | Polishing |
| 4.热处理 | Heat treatment |
| 5.结构件喷砂处理 | Sand blasting |
| 6.龙门数控加工中心 | CNC gantry machining center |
| 7.喷漆 | Painting |
| 8.装配 | Assembly |
| 9.整机调试 | Commissioning |





Isometric Layout
of an EPS/EPP Molding Plant
EPS/EPP制品成型车间布置图



能源供应

- 电源
- 蒸汽锅炉和蒸汽蓄能罐
- 空气压缩机和压缩空气储气罐
- 冷却塔和水泵

Energy Supply

- Power Supply
- Steam Boiler and Steam Storage Tank
- Air Compressor and Compressed-Air Storage Tank
- Cooling Tower and Water Pump



• Steam Boiler 蒸汽锅炉



• Air Compressor 空气压缩机



• Steam Storage Tank 蒸汽储气罐



• Compressed-Air Storage Tank 压缩空气储气罐



• Cooling Tower 冷却塔



• EPS Shape Moulding Machine
EPS包装成型机



• ICF Mould
模具



• EPP/EPS Shape Moulding machine
EPP/EPS包装成型机



• EPS Packaging Machine
EPS打包机



• EPS CNC Cutting Machine
EPS CNC切割机

Main Applications of EPS Block Panel Products

- Insulated External Wall and Ceiling
- Sandwich Panel and 3D Panel



• EPS Vacuum Block Molding Machine
EPS真空板材成型机



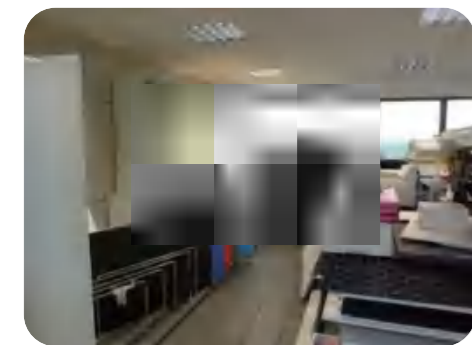
• EPS Vertical Block Molding Machine
EPS立式板材成型机



• EPS BLock Continuous Vibration Cutting auto adjusting wire system
EPS板材连续振动切割机(可自动调丝)



• EPS Raw Material & Silos
EPS原料和料仓



• EPS Thermo-Recycling Machine
EPS热熔机



• EPS Mixer
EPS混合机



• EPS De-Duster
EPS除尘机



• EPS Crusher
EPS破碎机

← Recycling System 回收系统



• Shrink Film Packaging Machines
EPS热缩膜打包机

主要特点

在EPSBE1200间歇式预发泡机的基础上，引进德国先进的发泡机械工艺和装备，开发出国内唯一超大型、多功能的多次复合间歇式预发泡机，获得中国实用新型专利。

1. 机器在进行EPS原料一次预发后，还可进行二次、三次发泡（客户可选配）。年产量在2000吨EPS原料以下的EPS生产工厂，只需一台EPSBE1600型间歇式预发泡机，即可同时预发重料和预发轻料，满足生产要求，提高了生产效率，节约了生产场地和能源；
2. 电气系统采用日本光洋公司的PLC可编程工控机和10"大型真彩触摸屏，操作简单，运行平稳；
3. 加料采用全自动螺旋上料机构和负压加料装置，并采用光电控制系统称重模块，确保称重精确；
4. 蒸汽系统采用日本"YS"公司的蒸汽减压阀，严格控制发泡筒体内的蒸汽压力；
5. 预发珠粒比重在20kg/m³以上时，采用德国的比例阀（客户可选配）来精确控制发泡筒体内的温度差在±2℃以内，确保发泡均匀。

Main Features

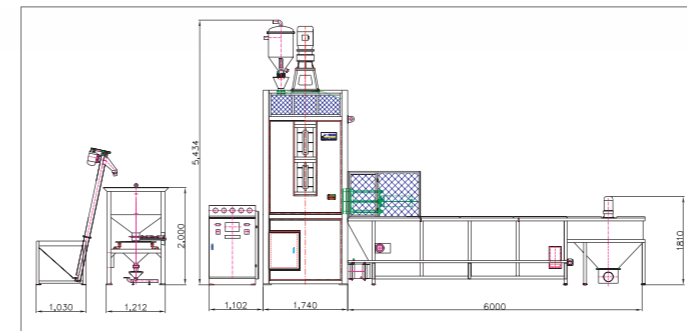
Based on the EPSBE1200 Batch Pre-Expander Machine, we imported advanced Pre-Expander Machinery technologies and equipments from Germany, and then developed and produced the unique super-sized multi-functional Composite Batch Pre-Expander in China with National Patent of Utility.

1. After the first phase of pre-expansion of the EPS raw material, the second and third phases of pre-expansions are optional. If annual production capacity is less than 2000 tons, then only one unit of the EPSBE1600 is needed, which is capable of pre-expanding heavy and light raw materials simultaneously; it can not only meet production requirements but also improve production efficiency and reduce production space and energy;
2. The electrical system has the PLC (Programmable Logic Controller) that is manufactured by KOYO of Japan and 10" true color Touch Screen, which is easy to use and stable to operate;
3. The machine uses the Fully Automatic Spiral Feeder and Negative Pressure Feeder to do the feeding, and also uses the Photoelectric Control System and Weight Simulation Module to ensure the weight precision;
4. The Steam System has the Steam-Reducing Valve manufactured by "YS" of Japan which controls the steam pressure inside the foaming tank strictly;
5. When the density of the pre-expanded beads exceeds 20kg/m³, this machine uses the German-made Proportioning Valve (optional) to precisely control the temperature tolerance inside the foaming tank to within ±2℃, ensuring uniform during foaming.



技术参数 Technical Data

序号 Number	项目 Items	单位 Unit	型号 Type	EPSBE1600
1	预发筒体尺寸 Dimension of Foaming Tank	桶直径 Diameter	mm	1600
		筒体高 Height	mm	2500
2	预发料筒容积 Volume of Foaming Tank	m ³		4
3	蒸汽入口口径 Steam Inlet DN	mm		80
4	压缩空气入口口径 Compressed-Air Inlet DN	mm		40
5	蒸汽压力 Steam Pressure	mpa		0.3-0.8
6	压缩空气压力 Compressed-Air Pressure	mpa		0.5-0.8
7	总电机功率 Power Supply	kw		23
8	加料控制方式 Feeding Control Mode			电子计量 Electronic Computation
9	烘干方式 Drying Method	kg/m ³		流化干燥床 Fluidized Bed
10	发泡密度 Foaming Density			11-50
11	生产效率 Production Capacity	kg/h		900-1800
12	最大外形尺寸 Max. Outer Dimension	mm		12000×2650×5500
13	整机重量 Machine Net Weight	kg		6500



EPSBE1100 全自动间歇式预发泡机

EPSBE1100 Automatic Batch Pre-Expander

EPSBE1200 全自动间歇式预发泡机

EPSBE1200 Automatic Batch Pre-Expander



主要特点

1. 机器采用PLC可编程工控机和触摸屏，实现人机对话，通过负压自动上料装置、精确电子称重和料位开关，实现了自动上料与精确计量；通过对筒体内的温度、压力的自动控制装置和自动光电料位控制装置，实现了发泡珠粒密度轻质均匀；通过振动筛、块料粉碎、风机输送装置，完成了EPS珠粒发泡的一次全自动循环过程；
2. 更加精确控制筒体内的蒸汽压力和温度，采用进口蒸汽减压阀和先进的德国比例阀(客户可选配)，保证减压阀出口的压力始终恒定，保证筒体内的温度差控制在 $\pm 1^{\circ}\text{C}$ 之内，确保发泡后的珠粒密度误差在 $\pm 2\%$ 之内。若生产密度 $20\text{kg}/\text{m}^3$ 以上的泡沫制品，则需要增设比例阀；
3. 流化干燥床内设热空气干燥系统(获得国家专利)，温度可达 75°C ，使发出的EPS原料更加干燥，并且快速定型，后发性好，加快了熟化过程，缩短了生产周期；
4. 由于将自动上料装置和电子称重装置与机器分离，避免了机器工作过程中产生的振动影响电子称重装置计量的准确性和可靠性；
5. 机器设有四种安全保护装置，可安全地保证机器正常运转；
6. 电脑设有生产工艺记忆功能和生产数量统计功能，操作者可点触摸屏，查找经常使用的EPS原料生产厂家的发泡工艺参数，同时可自行设计不同的发泡工艺参数，电子称重数显系统可方便地添加数字打印机(可根据客户需要添加)，统计出一天、一周、一月或一年的EPS原料的产量，便于厂内统计与核算；
7. 根据客户的要求，可以增加远程通讯系统，用来远程监控机器是否正常运转，解除机器故障；并可升级机器软件系统，改善机器工艺性能；
8. EPSBE1200型间歇式预发泡机筒体内设封闭式热空气干燥系统(获国家专利)；温度可达 75°C ，使发出的EPS原料更加干燥，一次发泡密度可达 $10\text{kg}/\text{m}^3$ ，并且快速定型，后发性好，减掉了流化干燥床，方便了珠粒的输送，加快了熟化过程，缩短了生产周期；
9. 新颖的方型桶体，加上桶体外采用冰花不锈钢板包装，外观更加美观大方。先进的EPS发泡加工工艺，提高了生产效率，改善了发泡的质量，使EPS珠粒发的更准，更轻，更快，并且设备运行安全可靠，故障率低。



Batch Pre-expanders

Main Features

1. With the use of PLC Controller (Programmable Logic Controller), Touch Screen, man-machine conversation will be realized. Automatic Negative Pressure Feeder, Precision Electronic Weighing Scale and Feeding Level Switch make the automatic feeding and precise measuring come true. With the use of Automatic Control Device for temperature and pressure inside the drum, and the Automatic Photoelectric Level Control Device, uniformity of the density and light-weight of the foaming beads will be realized; using the vibration sieve, crushing the lumps of EPS raw material, and Blower Fan and Conveyor to accomplish the first loop of automation of foaming of the EPS beads;
2. We imported Steam-Reducing Valve and the advanced German-made Proportioning Valve (optional) to precisely control the steam pressure and temperature, so that the pressure is throughout stable, ensuring that the interior temperature tolerance of the drum is kept within $\pm 1^{\circ}\text{C}$, and also makes sure that the error, created after the beads have been foamed, is within $\pm 2\%$. When density is above $20\text{kg}/\text{m}^3$, then it is necessary to install the Proportioning Valve;
3. The hot air drying system (National Patent), with temperature going up to 75°C will make the EPS beads dry up very quickly, shap fast, speed up the aging process and shorten the production process;
4. Machine automatically detaches from the Feeder and the Electronic Weighing Scale, to avoid inaccurate and unreliable readings due to the vibration produced during the operation process of the machine;
5. The machine is equipped with four safety devices, which can safely guarantee the normal operation of the machine;
6. The computer system is equipped with the functions of storing and quantity counting. The Operator can just click on the Touch Screen, and then look up for the frequently used foaming technology parameters of the EPS raw material manufacturers. The Electronic Weighing Digital Display System can easily add digital printers (optional) can easily calculate production capacity of EPS raw materials per day, per month, or per annum, to facilitate the factory's internal statistical data and checking of accounts;
7. According to the customers' requirements, the remote communication system can be added to remotely monitor whether or not the machine is operating normally, and to troubleshoot any failure in the machine; as well as upgrade the software system in the machine so as to improve the technological performance of the machine;
8. The interior of the EPSBE1200 Batch Pre-Expander barrel with the temperature going up to 75°C makes the expanded EPS raw materials dry up very quickly. The foaming density can get up to $11\text{kg}/\text{m}^3$, with fast shaping, good post-foaming, and it can eliminate the use of fluidized bed dryer, facilitate the delivery of the EPS beads, accelerate aging process, and shortened production lifecycle;
9. The use of advanced EPS foaming technology has enhanced the production efficiency, and improved the foaming quality. And as a result makes expansion of the EPS beads more accurate, lighter, faster, as well as reliable operation with low faulty rates.



技术参数 Technical Data

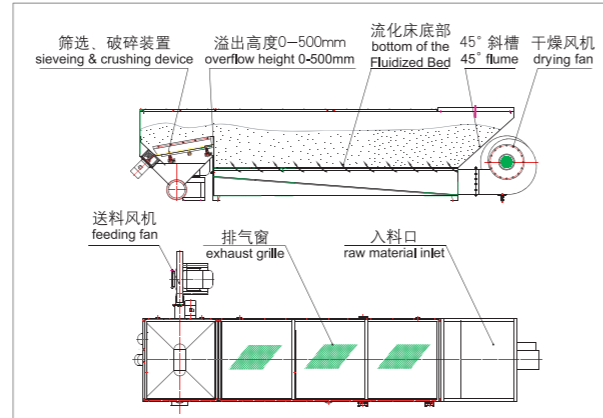
序号 Number	项目 Items	型号 Type		EPSBE1100	EPSBE1200
		单位 Unit			
1	预发筒体尺寸 Dimension of Foaming Tank	桶直径 Diameter	mm	1100	1200
		筒体高 Height	mm	1800	1800
2	预发料筒容积 Volume of Foaming Tank		m^3	1.7	1.9
3	蒸汽入口通径 Steam Inlet DN		mm	50	50
4	压缩空气入口通径 Compressed-Air Inlet DN		mm	25	25
5	蒸汽压力 Steam Pressure		mpa	0.3-0.8	0.3-0.8
6	压缩空气压力 Compressed-Air Pressure		mpa	0.5-0.8	0.5-0.8
7	总电机功率 Power Supply		kw	12	16.3
8	加料控制方式 Feeding Control Mode			电子计量 Electronic computation	电子计量 Electronic computation
9	烘干方式 Drying Method			流化干燥床 Fluidized Bed	筒体烘干 Foaming Tank Drying
10	发泡密度 Foaming Density		kg/m^3	12-30	11-50
11	生产效率 Production Capacity		kg/h	280-500	400-600
12	最大外形尺寸 Max. Outer Dimension		mm	7500×3000×3500	7500×3150×3800
13	整机重量 Machine Net Weight		kg	3300	3800

主要特点

1. 机器是预发泡机的配套设备，采用高压风机和热交换器形成的热风幕，对预发出来的EPS珠粒进行透析；
2. 改善了预发珠粒在成型过程中的进一步膨胀性、珠粒间的熔结性及珠粒的弹性，有利于提高EPS产品的质量；
3. 与间歇式预发泡机配套的流化干燥床内的温度达到75℃，并采用振动筛分，块料粉碎和风机输送等装置。

Main Features

1. The machine is attached to the Pre-Expander to form a complete set. This machine uses the high voltage fan and heat exchanger to form the warm air curtain, and then does the dialysis on the pre-expanded EPS beads coming out of the Pre-Expander;
2. To improve the further expansibility of the pre-expanded beads during the forming process, the bonding property between the beads as well as the elasticity of the beads will help improve the quality of the EPS products;
3. The temperature within the EPSFB1200 or EPSFB1600 fluidized bed dryer, which is attached to the EPSBE1200 Batch Pre-Expander and EPSBE1600 Batch Pre-Expander respectively, can reach 75 °C, and also uses devices such as the vibratory sieve, EPS Block Crusher, and Conveying Fan.

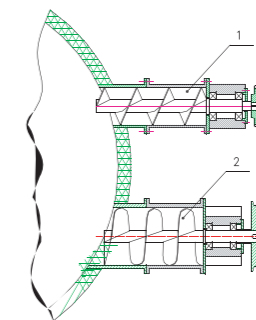


主要特点

1. EPS珠粒通过上料、发泡，进入流化干燥床（客户可选配），再通过风机输送装置，进入熟化料仓，完成了珠粒发泡的自动循环过程；
2. 机器进料系统包括一次进料装置和二次进料装置。一次进料装置通过变频器调节进料速度，二次进料装置通过移动导轨和风管式吹料降温方式保证进料稳定；
3. 自动负压上料装置由光电开关控制料位，实现了自动上料（客户可选配）。

Main Features

1. The automation phase of the beads expansion is accomplished by loading the EPS beads into the feeder, expansion of the EPS beads, the expanded EPS beads will then enter the fluidized bed (optional), and then go through the Centrifugal Fan and Conveying device to be transported into the Aging Silos;
2. The machine's feeder system includes the first-phase and second-phase feeders. The first-phase feeder uses the transformer to regulate the feeding speed, the second-phase feeder uses the method of movement rail and wind pipe to blow the EPS Beads to cool down the temperature, ensuring that feeding is stable;
3. To accomplish the automatic feeding, the Photoelectric Switch should control the level of the EPS beads in the Automatic Negative Pressure Feeder (Optional).



- 连续式预发泡机一次，二次进料装置
The first and second feeders of Continuous Pre-expander.
- 1. 一次进料装置: the first feeder
- 2. 二次进料装置: the second feeder

技术参数 Technical Data

序号 Number	项目 Items	单位 Unit	型号 Type	EPSFB900	EPSFB1200	EPSFB1600
1	蒸汽入口口径 Steam inlet DN	mm		25	25	40
2	总电机功率 Power Supply	kw		5	6.6	12
3	最大外形尺寸 Max. Outer Dimension	mm		5800×1000×1200	6500×1000×1200	6500×1500×1820
4	整机重量 Machine Net Weight	kg		650	700	1800

技术参数 Technical Data

序号 Number	项目 Items	单位 Unit	型号 Type	EPSCE900	EPSCE1200	EPSCE1600
1	预发筒体尺寸 Dimension of Foaming Tank	桶直径 Diameter	mm	900	1200	1600
		筒体高 Height	mm	2000	2200	2500
2	生产效率 Production Capacity	kg/h		250-400	400-800	800-1600
3	蒸汽入口口径 Steam Inlet DN	mm		25	25	40
4	压缩空气入口口径 Compressed-Air Inlet DN	mm		20	20	25
5	蒸汽压力 Steam Pressure	mpa		0.6	0.6	0.6
6	压缩空气压力 Compressed-Air Pressure	mpa		0.6	0.6	0.6
7	搅拌电机 Agitation Motor	功率 Power Supply	kw	5.5	6.8	8.5
		转数 Rotation	r/min	96	96	96
8	最大外形尺寸 Max. Outer Dimension	mm		2050×2900×2750	2800×1350×2850	3000×2500×3500
9	整机重量 Machine Net Weight	kg		1500	1800	2800

PE

间歇式预发泡机具有方便的料仓控制系统，可同时操作100个以上的料仓。

ALESSIO range of pre-expanders includes both continuous and discontinuous/batch pre-expanders, covering all range of productions suitable for shape moulding as well as block moulding plants (chamabers volume up to 6 m³).

Very efficient silos management programs, personalised for each customer that allow you to control up to 100 silos and more. For special purposes also laboratory pre-expanders ,or high precision machines for high density are available.



PE 0.8 DA								
Production Kg/h:								
Density g/l:	12	14	16	18	20	25	30	35
Level 0,8 m ³	430	500	570	640	720	780	820	820

PE 1.7/2.5 DA								
Production Kg/h:								
Density g/l:	12	14	16	18	20	25	30	35
Level 2,5 m ³	900	1050	1200	1350	1500	1650	1700	1700

PE 2.5/4.0 DA								
Production Kg/h:								
Density g/l:	12	14	16	18	20	25	30	35
Level 4,0 m ³	1320	1540	1760	1980	2200	2400	2400	1700

PE 3.0/6.0 DA								
Production Kg/h:								
Density g/l:	12	14	16	18	20	25	30	35
Level 6,0 m ³	2200	22570	2820	3180	3560	4100	4400	4500



PM
PMS
PMA



设备具有快速成型，成品优良，低排放，先进的电气控制，世界著名电器元器件，多层次自动上料，自动装卸等优点。

ALESSIO has started with a machine that provides the basic functions, quick moulding cycle, high quality finished products and ease of use and has combined this with a complete electronic management system, respected brand name components. On top of all this ALESSIO discharger which can work on one level or multiple levels, or automation with an aerial robot for loading inserts/films as well as unloading and stacking finished products.



PMP
PMPS
PMPA



采用与PM系列相同的原理和设计，为客户提供更多的EPP生产设备。我们也提供高压成型设备（8 Bar），该设备在应对特殊的EPP材料方面表现优越。

ALESSIO takes the same principles and options used for the PM range, giving the customer the most flexible machine for all your EPP moulded products. Also available a range of higher pressure machines (up to 8 bar), allowing best performances when moulding special epp materials.



PMT
PMPT
TRANSFER



移模成型机不仅是一个成型设备，更是多层次自动加潜入物，节省人力，节约时间，高效率生产的解决方案。

The ALESSIO Transfer/shuttle machine is not just one machine, but a range of machines offering the perfect solution for all products when need multiple or complex inserts/films added during the moulding cycle, keeping the operator in complete safety and without effecting the overall cycle time.

For big productions also available a line of transfers totally automated, to minimize the need for an operator.

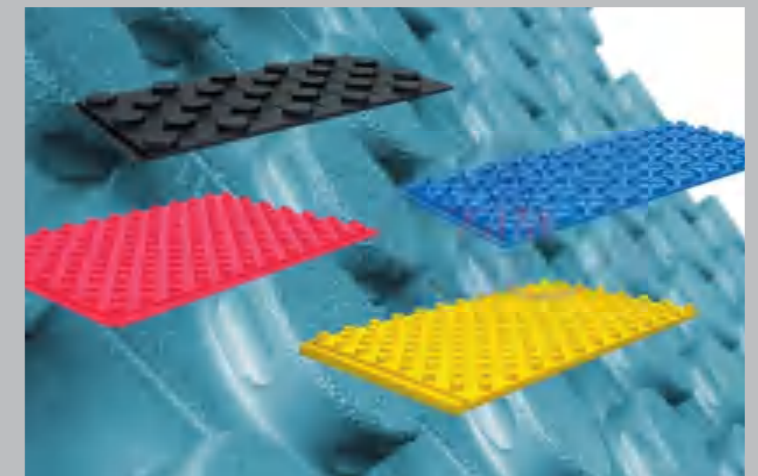


LT



热成型机为客户提供了一整套适用于不同厚度、贴面EPS地板以及各种复杂形式的产品自动修剪，节省人力，提高效率的技术。

A perfect example of a machine studied by ALESSIO to offer a particular solution for a very complex product, the LT machine thermoforms different thicknesses, as well as different types of films with eps for the production of floor panels and trims the complete panel removing the need for an operator to spend excessive time trimming moulded panels.





EPS不再仅仅是切割成薄片应用于保温板材，更多的将应用于墙体或复杂屋顶结构的ICF，可用简单的EPS材料，或是嵌入金属或塑料。

EPS is no longer only used for simple cut panels for insulation: many new and extremely technical products are now made using ALESSIO machinery. Everything from ICFs for walls to complicated roofing structures in simple eps or incorporating metal inserts and film, from panels of important dimensions with or without inserts, to floor panels, and to a great variety of large and complex products can be produced thanks to the ALESSIO technology.





主要特点

1. 机器采用PLC与触摸屏,完成机器的开合模、进料、加热、保温、冷却、脱模、制品顶出等全自动循环过程;
2. 机器根据不同的制品,选择普通、加压、真空等不同方式进料,保证模内进料快速、均匀;
3. 机器采用先进的液压系统,运行和锁模分别采用主、副油缸工作,差动快速装置使动模最高行程速度达200mm/s,可节能40%;
4. 机器采用数控编码器,控制开合模的行程距离,保证加料时每次留缝一致,加料密度均匀;
5. 机器加热时采用平衡阀控制,保证每次模腔内蒸汽压力一致,温度相同;
6. 机器真空系统主要由真空储能罐、真空冷凝罐和高效水环真空泵等组成,制品成型速度快、粘结均匀,含水率低;
7. 电脑设有生产工艺记忆功能和生产数量统计功能,操作者可点触摸屏,查找或自行设计制品的成型工艺参数。

Main Features

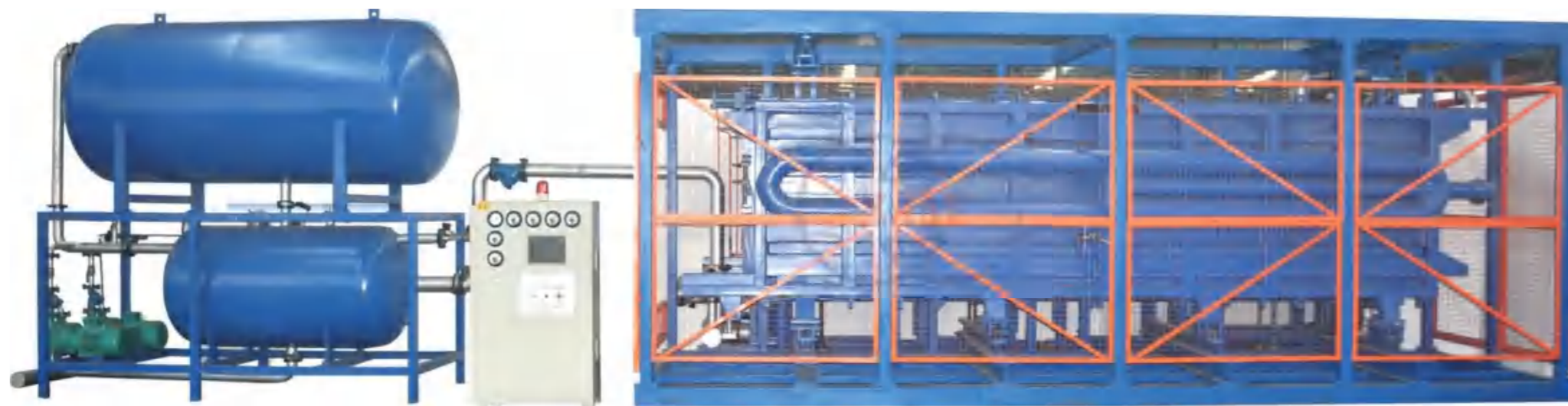
1. With the use of PLC Controller (Programmable Logic Controller) and Touch Screen, the automatic looping process of opening and closing of the moulds, feeding, heating, heat preservation, cooling, mould ejection, and releasing the final product from the machine will be accomplished;
2. The machine can select different feeding processes such as regular feeding, inflating, and vacuum feeding, ensuring high feeding speed and uniformity inside the mould;
3. With advanced hydraulic system, the main and auxiliary cylinders will respectively operate and lock the mould; with the differential fast device, can improve the speed of moving mould journey to a maximum of about 200mm per second, saving energy consumption over 40%;
4. The machine uses the Numerical Control Encoder to control the travel distance covered during the opening and locking of the mould, to make sure that sealing remains identical during each feeding, and to ensure that the feeding density is uniform;
5. The machine uses the equilibrium valve to make sure that the steam pressure inside the mould is uniform and the temperature remains the same;
6. The machine's vacuum system is mainly composed of vacuum storage tank, vacuum cooling tank, and highly efficient water-circulative vacuum pump to ensure fast molding of the product, uniform bonding and low moisture content;
7. The computer system is equipped with memory functions for the production storing and quantity counting. The operator can click on touch screen to look for or self-design molding process parameter of production.

技术参数 Technical Data

序号 Number	项目 Items	单位 Unit	型号 Type				
			EPSSM1200	EPSSM1400	EPSSM1700	EPSSM2000	
1	标准模具尺寸 Standard Dimensions of Mold	mm	1200×1000	1400×1200	1700×1500	2000×1800	
2	制品尺寸 Dimensions of Product	mm	1000×850	1200×1050	1500×1350	1800×1650	
3	制品高度 Height of Product	mm	350	350	350	350	
4	最大开模间距 Max. Interval	mm	1200	1400	1400	1400	
5	最小开模间距 Min. Interval	mm	150	200	200	200	
6	行程速度 Procession Speed	mm/s	180	180	160	120	
7	蒸汽 Steam	压力 Pressure	mpa	0.5-0.7	0.5-0.7	0.5-0.7	0.5-0.7
		进口口径 Inlet DN	mm	50	70	80	100
		消耗 Consumption	kg/cycle	5.5	6.5	8	9.5
8	压缩空气 Compressed-Air	压力 Pressure	mpa	0.5-0.7	0.5-0.7	0.5-0.7	0.5-0.7
		进口口径 Inlet DN	mm	65	65	65	65
		消耗 Consumption	kg/cycle	1.5	1.8	2.8	3.5
9	冷却水 Cooling Water	压力 Pressure	mpa	0.3-0.6	0.3-0.6	0.3-0.6	0.3-0.6
		进口口径 Inlet DN	mm	65	65	65	65
		消耗 Consumption	kg/cycle	1.5	1.8	2.8	3.5
10	冷凝水 Condensed Water	进口口径 Inlet DN	mm	25	25	25	25
		消耗 Consumption	kg/cycle	70	75	85	90
11	电源 Power Supply	功率 Power	kw	10.2	10.2	13.7	16.5
		电压 Voltage	V	380	380	380	380
12	成型周期 Molding Period	s/cycle	70-110	80-130	80-150	100-180	
13	最大外形尺寸 Max. Outer Dimension	mm	4300×2000×3130	4500×2200×3500	4600×2520×4000	4600×2850×4500	
14	整机重量 Machine Net Weight	kg	4000	4500	5800	6500	

※ 上表中模腔内净尺寸为定型产品的尺寸,也可按用户要求做适当调整。

The mould sizes mentioned in the above table are our standard mould sizes. But customers can also provide their own different mould sizes.



主要特点

1. 机器采用PLC可编程工业控制器和电脑触摸屏，完成机器的开合模、进料、加热、保温、冷却、脱模、制品顶出等自动循环过程；
2. 机器在加料，加热和冷却的全过程均采用真空自动控制系统；
3. 真空系统主要有真空储能罐，真空冷凝罐和高效水环真空泵等组成；
4. 机器采用优质型钢焊接而成，并经过除锈、抛光、刨平和时效处理，使机器强度高，不变形。机器生产板材的密度可达到6-40kg/m³，并且板材成型速度快，粘结均匀，含水率低，变形小；
5. 机器模腔表面采用特氟龙涂层（客户可选配），板材易脱模；
6. 加厚真空板材成型机配备自动输送装置和自动电子称重，打印装置；
7. 机器可和彩钢夹芯板配套，生产宽度为850mm,950mm和1150mm的板材，也可生产宽度为1000 mm的建筑板材；
8. 机器采用平移门式开合模，美观大方，安全可靠，方便调整锁模间隙，提高了机器的气密性；
9. 机器采用6项专利技术。

Main Features

1. With the use of PLC Controller (Programmable Logic Controller) and Touch Screen, the automatic looping process of opening and closing of the moulds, feeding, heating, heat preservation, cooling, mould ejection, and releasing the final product from the machine will be accomplished;
2. The Automatic Vacuum Control System does the feeding, heating and cooling;
3. The Vacuum System consists of the Vacuum Storage Tank, Vacuum Condensate Tank, and highly efficient water-recycling vacuum pump;
4. The machine is coupled by using high quality welding method, and to get rid of the rust, polishing, smoothing and aging treatment, which gives the machine high strength, and without deformation. The density of the EPS Block can reach 6~40kg/m³, with fast EPS Block forming speed, uniform bonding, low moisture content, and with very minor deformation;
5. Applying a special Teflon coating to the surface of the mould cavity (Optional) makes the EPS Block to be easily ejected or released out of the mould;
6. The thickened wall Vacuum EPS Block Forming Machine has Automatic Conveyer, Automatic Electronic Weighing Scale, and the Automatic Printer;
7. This machine can be used to produce the width of 850mm, 950mm and 1150mm EPS Blocks, and also produce the width of 1000mm EPS Block for buildings;
8. The Horizontal Sliding-Door opening and locking mould has an elegant appearance, is safe and reliable, easy adjustment of the gap between the mould, which improves the air tightness in the machine;
9. Adopts 6 patent technologies.

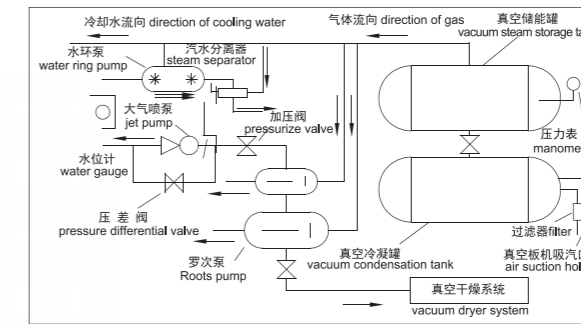
技术参数 Technical Data

序号 Number	项目 Items	单位 Unit	型号 Type	
			EPSBM6000V/H	EPSBM8000V/H
1	模腔内净尺寸 Mould Size	mm	6120×1230×1050	8110×1240×1040
2	模腔体积 Mould Volume	m ³	7.96	10.46
3	制品密度/比重 Product Density/Specific Gravity	kg/m ³	6-40	6-40
4	生产效率（标准条件） Production Capacity	block/h	4-12	3-11
5	蒸汽压力 Steam Pressure	mpa	0.6	0.6
6	蒸汽进口口径 Steam Inlet DN	mm	150	150
7	压缩空气进口口径 compressed-Air Inlet DN	mm	50	65
8	电源 Power Supply	功率 Power	kw	30
		电压 Voltage	V	380
9	控制方式 Control Mode		自动 Automatic	自动 Automatic
10	结构特点 Structural Features		液压平移门真空冷却 Hydraulic Sliding-door Vacuum Cooling	液压平移门真空冷却 Hydraulic Sliding-door Vacuum Cooling
11	控制系统 Control System		PLC及人机界面 PLC with Touch Screen	PLC及人机界面 PLC with Touch Screen
12	最大外形尺寸 Max. Outer Dimension	mm	14000×5000×3000	16000×5000×3000
13	整机重量 Machine Net Weight	tons	17	20
14	自动输送装置 Automatic Conveyer		配 Supplied	配 Supplied
15	电子称重 Electronic Scale		配 Supplied	配 Supplied
16	打印 Printer		可选 Optional	可选 Optional

※ 上表中模腔内净尺寸为定型产品的尺寸，也可按用户要求做适当调整。
The mould sizes mentioned in the above table are our standard mould sizes. But customers can also provide their own different mould sizes.



电子称重、打印装置
Electronic Weighing scale and Printer



EPS板材成型机真空系统原理图
The Vacuum System Principle Drawing of EPS Block Molding Machine



主要特点

1. 机器采用PLC可编程工业控制器和电脑触摸屏，完成机器的合模，进料、加热、保温、冷却、脱模、制品顶出等自动循环过程；
2. 机器在加料、加热、冷却的全过程均采用真空自动控制系统；
3. 真空系统主要由真空储能罐，真空冷凝罐和高效水环真空泵等组成；
4. 机器采用优质型钢焊接而成，并经过时效处理，使机器强度高，不变形，机器生产板材的密度可达到6-40kg/m³，并且板材成型速度快，粘结均匀，含水率低，变形小；
5. 机器模腔表面采用特氟龙涂层（客户可选配），板材易脱模；
6. 加厚真空板材成型机配备自动输送装置和自动电子称重、打印装置；
7. 机器可和彩钢夹芯板配套，生产宽度为850mm、950mm和1150mm的板材，也可生产宽度为1000mm的建筑板材。

Main Features

1. With the use of PLC Controller (Programmable Logic Controller) and Touch Screen, the automatic looping process of opening and closing of the moulds, feeding, heating, heat preservation, cooling, mould ejection, and releasing the final product from the machine will be accomplished;
2. The Automatic Vacuum Control System does the feeding, heating and cooling;
3. The Vacuum System consists of the Vacuum Storage Tank, Vacuum cooling Tank, and highly efficient water-recycling vacuum pump;
4. The machine is coupled by using high quality welding method, and goes through aging treatment, which gives the machine high strength, and without deformation. The density of the EPS Block can reach 6~40kg/m³, with fast EPS Block forming speed, uniform bonding, low moisture content, and with very minor deformation;
5. Applying a special Teflon coating to the surface of the mould cavity (Optional) makes the EPS Block to be easily ejected or released out of the mould;
6. The thickened wall Vacuum EPS Block Forming Machine has Automatic Conveyor, Automatic Electronic Weighing Scale, and the Automatic Printer;
7. This machine can be used to produce the width of 850mm, 950mm and 1150mm EPS Blocks, and also produce the width of 1000mm EPS Block for buildings.

技术参数 Technical Data

序号 Number	项目 Items	单位 Unit	型号 Type	EPSBM6000V	EPSBM6000CV	EPSBM8000V	EPSBM8000CV
1	模腔内净尺寸 Mould Size	mm		6120×1230×1050	6080×1230×630	8110×1240×1040	8100×1230×630
2	模腔体积 Mould Volume	m ³		7.96	4.71	10.46	6.28
3	制品密度/比重 Products Density/Specific Gravity	kg/m ³		6-40	6-45	6-35	6-40
4	生产效率（标准条件） Production Capacity	block/h		4-12	4-13	3-11	4-12
5	蒸汽压力 Steam Pressure	mpa		0.6	0.6	0.6	0.6
6	蒸汽进口口径 Steam Inlet DN	mm		150	100	150	150
7	压缩空气进口口径 compressed-Air Inlet DN	mm		50	50	65	65
8	电源 Power Supply	功率 Power	kw	30	30	30	30
		电压 Voltage	V	380	380	380	380
9	控制方式 Control Mode			自动 Automatic	自动 Automatic	自动 Automatic	自动 Automatic
10	结构特点 Structural Features			液压单门真空冷却 Hydraulic Single-door Vacuum Cooling	液压单门真空冷却 Hydraulic Single-door Vacuum Cooling	液压单门真空冷却 Hydraulic Single-door Vacuum Cooling	液压单门真空冷却 Hydraulic Single-door Vacuum Cooling
11	控制系统 Control System			PLC及人机界面 PLC with Touch Screen	PLC及人机界面 PLC with Touch Screen	PLC及人机界面 PLC with Touch Screen	PLC及人机界面 PLC with Touch Screen
12	最大外形尺寸 Max. Outer Dimension	mm		14000×4000×3000	14000×3000×3000	16000×4000×3000	16000×3000×3000
13	整机重量 Machine Net Weight	tons		15	12	17	13
14	自动输送装置 Automatic Conveyor			配 Supplied	可选 Optional	配 Supplied	可选 Optional
15	电子称重 Electronic weighing Scale			配 Supplied	可选 Optional	配 Supplied	可选 Optional
16	打印 Printer			可选 Optional	可选 Optional	可选 Optional	可选 Optional

※ 上表中模腔内净尺寸为定型产品的尺寸，也可按用户要求做适当调整。

The mould sizes mentioned in the above table are our standard mould sizes. But customers can also provide their own different mould sizes.



主要特点

1. 机器采用PLC可编程工业控制器和电脑触摸屏,完成机器的开合模、进料、加热、保温、冷却、脱模、制品顶出和制品翻转运输等智能自动循环过程;
2. 机器在自动计量加料、自动加热和冷却的全过程均采用真空自动控制系统;
3. 真空系统主要有真空储能罐,真空冷凝罐和高效水环真空泵等组成;
4. 机器采用顶部进气、底部排气的加热方式和加水、喷淋相结合的冷却方式;
5. 机器采用优质型钢焊接而成,并经过热处理、喷砂、抛丸,使机器强度高,不变形。机器生产板材的密度可达到6-40kg/m,并且板材成型速度快,粘结均匀,含水率低,变形小;
6. 机器模腔采用不锈钢板或不锈钢楔形网架结构,节能、高效、易于拆卸清理、易脱模、板材粘性好;
7. 机器采用平移方式开合门,美观大方、快捷高效、安全可靠,开模时板材同时顶出,合模时方便调整锁模间隙,提高了机器的气密性;
8. 机器配备自动输送装置和自动电子称重,打印装置;
9. 机器适用于生产改性EPS防火板材,亦适用于生产消失模专用EPS板材等;
10. 整套全部由韩国工程师亲自设计,所有的阀门全部产自欧洲或韩国。

Main Features

1. With the use of PLC Controller (Programmable Logic Controller) and Touch Screen, the automatic looping process of opening and closing of the moulds, feeding, heating, heat preservation, cooling, mould ejection, and releasing the final product from the machine will be accomplished.
2. Adopt the auto control system on auto weighing and feeding, auto heating and cooling.
3. Vacuum system mainly includes vacuum storage tank, vacuum cooling tank and efficient water ring vacuum pump and other components.
4. The machine uses the heating way of top intake, bottom exhaust and cooling way of water spray system.
5. Using high-quality steel and then are welded and heat-treated, sand blasted, shot blasted, the machine is with high strength, no deformation. Block density can reach 6-40kg / m, with high speed, uniform adhesion, low moisture content, the small deformation.
6. Machine cavity is made of stainless steel plate or stainless steel wedge grid structure, with features of energy efficient, easy to disassemble to clean, easy to mold, sheet and good bonding.
7. The machine uses translation mode to open and close the door, with features of nice, fast and efficient way and safe and reliable operation. Eject the block out while the door opened. It is easy to adjust when the mold clamping gap and improve the air tightness of the machine.
8. The machine is equipped with automatic transmission and automatic electronic weighing equipment, printing equipment.
9. The machine is also suitable for lost mold EPS block.
10. The machine is designed by South Korean engineer, all of the valves are imported from South Korea.

技术参数 Technical Data

序号 Number	项目 Items	单位 Unit	型号 Type	
			BMC3600V/H	BMC6000V/H
1	模腔内净尺寸 Mould Size	mm	3660X1230X520	(3040X2)X1230X520
2	模腔体积 Mould Volume	m ³	2.34	3.88
3	制品密度/比重 Product Density/Specific Gravity	kg/m ³	40-60	40-60
4	生产效率(标准条件) Production Capacity	block/h	3-11	4-12
5	蒸汽压力 Steam Pressure	mpa	0.6	0.6
6	蒸汽进口口径 Steam Inlet DN	mm	150	150
7	压缩空气进口口径 compressed-Air Inlet DN	mm	65	50
8	电源 Power Supply	功率 Power	kw	30
		电压 Voltage	V	380
9	控制方式 Control Mode		自动 Automatic	自动 Automatic
10	结构特点 Structural Features		液压平移门真空冷却 Hydraulic Sliding-door Vacuum Cooling	液压平移门真空冷却 Hydraulic Sliding-door Vacuum Cooling
11	控制系统 Control System		PLC及人机界面 PLC with Touch Screen	PLC及人机界面 PLC with Touch Screen
12	最大外形尺寸 Max. Outer Dimension	mm	11000X5000X3000	14000×5000×3000
13	整机重量 Machine Net Weight	tons	13	17
14	自动输送装置 Automatic Conveyer		配 Supplied	配 Supplied
15	电子称重 Electronic Scale		配 Supplied	配 Supplied
16	打印 Printer		可选 Optional	可选 Optional

※ 上表中模腔内净尺寸为定型产品的尺寸,也可按用户要求做适当调整。

The mould sizes mentioned in the above table are our standard mould sizes. But customers can also provide their own different mould sizes.





主要特点

1. 机器采用PLC可编程工业控制器和电脑触摸屏，完成机器的开合模、负压进料、加热、保温、冷却、脱模、制品顶出等自动循环过程；
2. D型板材成型机独有的双气室设计（已获国家专利），在原单气室板材成型机的基础上节能30%，板材成型速度快，粘性好，密度均匀，避免了单气室板材成型机模腔内上下加料密度不均，板材边角加料不满，板材含水的弊端；
3. 机器采用优质型钢焊接而成，并经过时效处理，使机器强度高，不变形。机器生产板材的密度可达6-45kg/m³；
4. 机器可选配触摸屏、自动输送装置和自动电子称重、打印装置；
5. 机器可和彩钢夹芯板配套，生产850mm、950mm和1150mm的板材，也可生产1000mm的建材板。

Main Features

1. With the use of PLC Controller (Programmable Logic Controller) and Touch Screen, the automatic looping process of opening and closing of the moulds, feeding, heating, heat preservation, cooling, mould ejection, and releasing the final product from the machine will be accomplished;
2. The D type EPS Block Forming Machine has a specially designed Double Gas Chambers (National Patent), based on the previous Single Gas Chamber EPS Block Forming Machine, which saves up to 30% energy, fast EPS Block forming speed, with good bonding property, uniform density. This solves the problem of uneven density of the upper and lower feeding inside the mould cavity of the Single Gas Chamber EPS Block Forming Machine, when the EPS Block edges are not fully filled with the EPS material, and the drawbacks of moisture inside the EPS Block;
3. The machine is assembled by using high quality copper welding method, and goes through aging treatment, which gives the machine high strength, without deformation. This machine can produce EPS Block products with density of 6~40kg/m³;
4. The machine can optionally be equipped with the Touch Screen, Automatic Conveyor and Automatic Electronic Weighing Scale, Printer;
5. This machine can be used together with the Color Steel Sandwich Panel Production Line to produce the width of 850mm, 950mm and 1150mm EPS Blocks, and can also produce the width of 1000mm EPS Block for building construction purposes.

技术参数 Technical Data

序号 Number	项目 Items	单位 Unit	型号 Type									
			EPSBM6000C	EPSBM6000D	EPSBM6000C/A	EPSBM6000V/A	EPSBM8000C	EPSBM8000D	EPSBM4000C	EPSBM3000C		
1	模腔内净尺寸 Mould Size	mm	6080×1230×630	6080×1230×630 6080×1030×630	6090×1240×630 6090×830×630	6100×1240×1050 6100×840×1050	8100×1230×630	8100×1230×630 8100×1030×630	4040×1230×510	3040×1230×530		
2	模腔体积 Mould Vol.	m ³	4.71	4.71/3.94	4.71	7.96	6.28	6.28	2.53	1.98		
3	制品密度/比重 Density/ Specific Gravity	kg/m ³	6~40	6~45	6~45	6~45	6~35	6~45	6~45	6~45		
4	生产效率(标准条件) Capacity	block/h	2~8	2~9	2~9	2~9	2~8	2~8	2~9	2~9		
5	蒸汽压力 Steam Pressure	mpa	0.6	0.6	0.6	0.6	0.6	0.6	0.6	0.6		
6	蒸汽进口口径 Steam Inlet DN	mm	100	100	100	150	150	150	100	100		
7	压缩空气进口口径 Air-compressed Inlet DN	mm	50	50	50	65	65	65	40	40		
8	电源 Power Supply	功率 Power	kw	11	11	12	30	11	11	7.5	7.5	
		电压 Voltage	v	380	380	380	380	380	380	380	380	
9	控制方式 Control Mode		自动 Automatic	自动 Automatic	自动 Automatic	自动 Automatic	自动 Automatic	自动 Automatic	自动 Automatic	自动 Automatic		
10	结构特点 Structural Features		液压单门 Hydraulic Single-door	液压单门 Hydraulic Single-door	液压单门 Hydraulic Single-door	液压单门 真空冷却 Hydraulic Single-door Vacuum Cooling	液压单门 Hydraulic Single-door	液压单门 Hydraulic Single-door	液压单门 Hydraulic Single-door	液压单门 Hydraulic Single-door		
11	控制系统 Control System		PLC及人机界面 PLC with Touch Screen	PLC及人机界面 PLC with Touch Screen	PLC及人机界面 PLC with Touch Screen	PLC及人机界面 PLC with Touch Screen	PLC及人机界面 PLC with Touch Screen	PLC及人机界面 PLC with Touch Screen	PLC及人机界面 PLC with Touch Screen	PLC及人机界面 PLC with Touch Screen		
12	最大外形尺寸 Max. Outer Dimension	mm	8000×3000×3000	8000×3000×3000	8000×3000×3000	14000×3000×3000	10000×3000×3000	10000×3000×3000	6000×2800×3000	5000×2800×3000		
13	整机重量 Machine Net Weight	tons	9	9.5	10.5	15	11	12	7	6		
14	备注 Remark			双气室节能型 Double Air Chamber	模腔高度可调整 Mold's Height Can be Adjusted	模腔高度可调整 Mold's Height Can be Adjusted		双气室节能型 Double Air Chamber				

※ 上表中模腔内净尺寸为定型产品的尺寸，也可按用户要求做适当调整。
The mould sizes mentioned in the above table are our standard mould sizes. But customers can also provide their own different mould sizes.

Automatic
Block Molding
Machines





主要特点

1. 机器采用PLC和触摸屏完成机器的开合模、负压进料、穿透加热、保温、风冷却、脱模、制品顶出、自动输送等自动循环过程；
2. 机器生产板材的密度可达6~40kg/m³，并且板材成型速度快、粘接性好、含水率低、变形小；
3. 预发珠粒从机器上部进料，节约能源，进料速度快，密度均匀，尤其适用于轻板生产；
4. 机器结构紧凑，占地面积小。

1. With the use of PLC Controller (Programmable Logic Controller) and Touch Screen, the automatic looping process of opening and closing of the moulds, feeding, heating, heat preservation, cooling, mould ejection, and releasing the final product from the machine will be accomplished;
2. This machine can produce EPS Block products with density of 6~40kg/m³, as well as fast EPS Block forming speed, uniform bonding, low moisture content, with very minor deformation;
3. The Pre-Expander Beads are fed in from the top of the machine, this will save energy, fast feeding speed, uniform density, especially suitable for light-weight EPS Block production;
4. The machine has a compact structure that occupies a very small space.

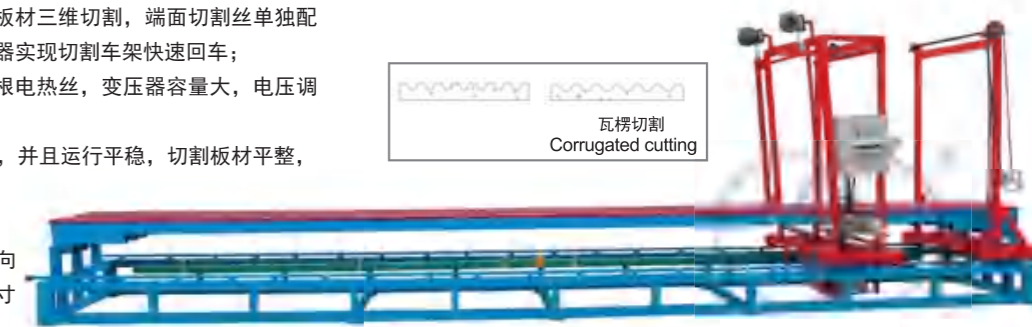
技术参数 Technical Data

序号 Number	项目 Items	单位 Unit	型号 Type	EPSBM3000/V	EPSBM5000/V
1	模腔内净尺寸 Mould Size	mm		3050×1230×630	5060×1230×630
2	模腔体积 Mould Vol.	m ³		2.36	3.92
3	制品密度/比重 Products Density/Specific Gravity	kg/m ³		6~40	6~40
4	生产效率 Production Capacity	block/h		3~12	2~12
5	蒸汽压力 Steam Pressure	mpa		0.6	0.6
6	蒸汽进口口径 Steam Inlet DN	mm		100	100
7	压缩空气进口口径 Compressed-Air Inlet DN	mm		40	50
8	电源 Power Supply	功率 Power	kw	8.5	11
		电压 Voltage	V	380	380
9	控制方式 Control Mode			自动 Automatic	自动 Automatic
10	结构特点 Structural Features			液压立式单开门 Hydraulic Vertical Single Open-door	液压立式单开门 Hydraulic Vertical Single Open-door
11	控制系统 Control System			PLC	PLC
12	最大外形尺寸 Max. Outer Dimension	mm		3000×3200×4200	3100×3200×6200
13	整机重量 Machine Net Weight	tons		5.5	7.5

※ 上表中模腔内净尺寸为定型产品的尺寸，也可按客户要求做适当调整。
The mould sizes mentioned in the above table are our standard mould sizes. But customers can also provide their own different mould sizes.

主要特点

1. 机器主要采用厚壁异型方管焊接组合而成，可自由拆卸组装。
2. EPSBC6000采用水平、竖向和端面切割丝，实现板材三维切割，端面切割丝单独配切割车，可与横、竖切割丝同时工作，采用离合器实现切割车架快速回车；
3. 机器采用10KVA多抽头特制变压器，可同时用50根电热丝，变压器容量大，电压调节范围广；
4. 机器采用变频调速器，在0~4m/min之间任意调速，并且运行平稳，切割板材平整，尺寸稳定；
5. 端面切割可选配自动控制；
6. EPSBC6000/V加长型垂直板材切割机可在垂直方向同时切割各种尺寸小型板材，切割产品对角线尺寸误差小于1.0mm，适用墙体保温；
7. EPSBC6000/C是在EPSBC6000基础上选配瓦楞切割装置，该装置可切割墙体保温所用的各种EPS燕尾槽板、波形板、矩形板等，该装置采用单片机控制系统，在控制系统上设定切割参数，驱动步进电机按所设定参数进行切割。



Main Features

1. The main body of the machine is composed of welded thick-walled heterotypic square pipes, which can be freely and easily dismantled and assembled;
2. The EPSBC6000 has the Horizontal, Vertical and Edge surface cutting wires to achieve the three-dimensional (3D) cutting of the EPS Blocks, the Edge surface cutting wire is equipped with its own Cutting Machine, and can operate together with the horizontal and vertical cutting wires at the same time. This machine uses the Clutch to achieve a quick return of the cutting frame;
3. The machine has a specially made 10KVA transformer with multiple sockets to which 50 electric heating cords can be connected at the same time. This transformer has a large capacity and the voltage can be regulated on a wide range of values;
4. The machine has Frequency-Speed Regulator to regulate the speed between 0-4m/min, to enable smooth operation, and to smoothly cut the EPS Blocks of stable dimensions;
5. The Edge surface cutting can optionally be equipped with automatic control system;
6. The EPSBC6000/V Lengthened Vertical Block Cutting Machine can cut all kinds of small-sized EPS Blocks in vertical direction at the same time. The error in the diagonal size of the cut product is less than 1.0mm. It is used in external walls insulation;
7. Based on EPSBC6000, the EPSBC6000/C can be equipped with the Corrugated Cutting Device (Optional). This device can cut all kinds of EPS Dovetail Slot Panels, Wave-Shaped Panels, Rectangular Panels, for insulation. This device is controlled by the single chip micro-computer control system. The cutting parameters are inputted into the control system. And based on these inputted cutting parameters, the Step-Servo Motor is started to do the cutting.

技术参数 Technical Data

序号 Number	项目 Items	单位 Unit	型号 Type	EPSBC3000、6000、8000	EPSBC3000、6000、8000/C	EPSBC3000、6000、8000/V
1	加工制品最大尺寸 Max. Cut Product Dimension	mm		(3080,6080,8100)×1230×1240	(3080,6080,8100)×1230×1240	(3080,6080,8100)×1230×1240
2	最小切割厚度 Min. Cutting Thickness	mm		15	15	15
3	切割速度 Cutting Speed	m/min		0-4.5(变频调速) (frequency-conversion timing)	0-3(步进控制调速) (Stepper Motor Speed Regulator)	0-4.5(变频调速) (frequency-conversion timing)
4	同时参加切割电热丝数量 Number of Hot Wires working simultaneously	piece		50	50	50
5	电热丝规格 Hot Wire Specification	mm		0.4~0.8	0.4~0.8	0.4~0.8
6	电机功率 Motor Power Supply	kw		0.55	0.55	3.55
7	变压器容量 Transformer Capacity	KVA		10	10	10
8	最大外形尺寸 Max. Outer Dimension	mm		(5500,8500,10500)×1600×2500	(5500,8500,10500)×1600×2500	(9500,12000,15000)×1600×3000
9	整机重量 Machine Net Weight	kg		1200,1500,1700	1300,1600,1800	2500,3000,3500

※ 上表中切割尺寸为定型产品的尺寸，也可按客户要求做适当调整。
The cutting sizes mentioned in the above table are our standard cutting sizes. But customers can also provide their own different cutting sizes.

主要特点

1. 机器采用PLC可编程工业控制器和电脑触摸屏。控制马达带动链条传动实现EPS板材的自动定位与连续行走，同时利用电阻丝来切割出所需规格的EPS薄板；
2. 机器采用水平、垂直切割丝，实现板材三维切割；
3. 机器采用10KVA多抽头特制变压器，水平切割架可同时使用60根电热丝，垂直切割架可同时使用20根电热丝切割，变压器容量大，同时由调压器进行平滑调压；
4. 机器采用变频调速器，调速方便，变速平稳，切割板材平整，尺寸稳定；
5. 机器的切割效率是普通切割机的3-5倍；
6. 客户可选配切割边角料自动搜集和破碎装置；
7. 客户可选配振动切割和全自动调丝装置。振动切割可提高切割速度和精度，尤其适合改性EPS防火板材的连续切割。

Main Features

1. The machine uses the PLC (Programmable Logic Controller) and Touch Screen to achieve the automatic positioning and continuous moving of the EPS Panel. The machine controls the motor to drive the transmission chain, at the same time makes use of the resistance wires to cut out the required EPS Sheets;
2. The machine uses the Horizontal and Vertical Cutting Wires to achieve the 3D (Three-Dimensional) Cutting of the EPS Blocks;
3. The machine has a specially made 10KVA Transformer with multiple sockets, to which the Horizontal Cutting frame can use 60 electric hot wires at the same time, the Vertical Cutting frame can use 20 electric hot wires at the same time. The Transformer has a large capacity, at the same time can smoothly regulate the voltage by using the voltage regulator;
4. The machine uses the Frequency-Speed Regulator that makes the speed regulation convenient, stable frequency, and to smoothly cut the EPS Blocks of stable dimensions;
5. The efficiency of this machine is 3~5 times as that of the ordinary Cutting Machine;
6. Customer can optionally select the machine for automatically collecting and crushing the side-scrap.
7. The client can choose vibrating cutting and wire auto adjusting system. The vibrating cutting can improve the cutting speed and accuracy. It is especially suitable for coated EPS block cutting.



技术参数 Technical Data

序号 Number	项目 Items	单位 Unit	型号 Type		
			EPSBC4000/L	EPSBC5000/L	EPSBC6000/L
1	加工制品最大尺寸 Max. Cut Product Dimension	mm	4050	5080	6080
2	最小切割厚度 Min. Cutting Thickness	mm	10	10	10
3	切割速度 Cutting Speed	m/min	0.5-4.5(变频调速) (frequency-conversion timing)	0.5-4.5(变频调速) (frequency-conversion timing)	0.5-4.5(变频调速) (frequency-conv.conversion timing)
4	同时参加切割电热丝数量 Number of Hot Wires working simultaneously	piece	50	50	50
5	电热丝规格 Hot Wire Specification	mm	0.4-0.8	0.4-0.8	0.4-0.8
6	电机功率 Motor Power Supply	kw	38	40	45
7	变压器容量 Transformer Capacity	KVA	36	36	36
8	最大外形尺寸 Max. Outer Dimension	mm	25000X1600X2400	29000x1600x2400	34000x1600x2400
9	整机重量 Machine Net Weight	kg	2800	3200	3800

※ 上表中切割尺寸为定型产品的尺寸，也可按客户要求做适当调整。
The cutting sizes mentioned in the above table are our standard cutting sizes. But customers can also provide their own different cutting sizes.



振动切割和自动调丝机构
vibrating cutting and wire auto adjusting system



EPS数控仿形切割机(二维)

EPS 2D CNC Shape Cutting Machines

主要特点

1. 机器是通过控制X轴（运载EPS块料的传递带）和Y轴（承载电阻丝的热丝架）的同步运行组合成图形，同时利用电阻丝来切割各种形状的EPS制品。其运动路线是利用输入电脑的图形，自动发出脉冲信号来控制X、Y轴的运转；
2. 输入电脑的产品图形有两种方法：直接利用电脑专用AutoCAD软件绘制或利用扫描图板把图形输入电脑；
3. 单线数控仿形切割机适用于切割的制品体积大或数量少；
4. 多线数控仿形切割机适用于切割的制品体积小或数量大。电阻丝切割系统可以同时使用多至二十条电阻丝，图形输入电脑后，所有电阻丝可平行运行；一次切割多达二十个复杂的二维形体。

Main Features

- 1.The machine makes use of controlling the X-axis and the Y-axis to combine them into a graph. At the same time, the resistance wire is used to cut all kinds of EPS products. Its operation route is to make use of the graphics inputted into the computer, and automatically sends impulse signals to control the X and Y axes;
- 2.Two methods: to directly use AutoCAD to draw or to scan the graphics and then input them into the computer;
- 3.The Single-Wire CNC Shape Cutting Machine is applicable to cutting products with big volumes or in small numbers;
- 4.The Multiple-Wire CNC Shape Cutting Machine is applicable to cutting products with small volumes or in large quantities. The Resistance Wire Cutting System can use 20 resistance wires at the same time, after inputting the graphics into the computer all the resistance wires can run in parallel, and can cut 20 complex 2D shapes.



技术参数 Technical Data

序号 Number	项目 Items	单位 Unit	型号 Type	EPSCNC2-2000x1240	EPSCNC2-3000x3000	EPSCNC2-4000x4000
1	加工制品最大尺寸 Max. Cut Product Dimension	mm		2000×1240×1240	3000×3000×1240	4000×4000×1240
2	切割丝长度 Length of Hot-Cutting Wire	mm		2000	3000	4000
3	切割厚度 Cutting Thickness	mm		0-1240	0-1240	0-1240
4	切割速度 Cutting Speed	m/min		0-3.5 (变频调速) (frequency-conversion timing)	0-3.5 (变频调速) (frequency-conversion timing)	0-3.5 (变频调速) (frequency-conversion timing)
5	同时参加切割电热丝数量 Number of Hot Wires working simultaneously	piece		1-20	1-20	1-20
6	电热丝规格 Hot Wire Specifications	mm		0.4-0.8	0.4-0.8	0.4-0.8
7	电机功率 Power Supply	kw		2.25	2.25	3.0
8	变压器容量 Transformer Capacity	KVA		8	8	8
9	CNC控制方式 Control Mode			全自动 Automatic	全自动 Automatic	全自动 Automatic
10	控制软件 Control System			专用AutoCAD	专用 AutoCAD	专用 AutoCAD
11	切割模式 Cutting Mode			二维 Two Dimension	二维 Two Dimension	二维 Two Dimension
12	最大外形尺寸 Max. Outer Dimension	mm		2500×2000×2500	3500×3500×2500	4500×4500×2500
13	整机重量 Machine Net Weight	kg		1500	2000	2500

※ 上表中切割尺寸为定型产品的尺寸，也可按用户要求做适当调整。
The cutting sizes mentioned in the above table are our standard cutting sizes. But customers can also provide their own different cutting sizes.

EPS数控仿形切割机(三维)

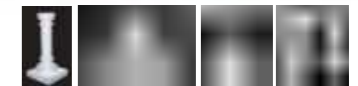
EPS 3D CNC Shape Cutting Machines

主要特点

1. 机器是通过控制X轴（运载块料的传递带）和Y轴（承载电阻丝的热丝架）的同步运行组合成图形，同时利用电阻丝来切割各种形状的EPS制品。其运动路线是利用输入电脑的图形，自动发出脉冲信号来控制X、Y轴的运转配置转动装置可实现三维切割；
2. 输入电脑的产品图形有两种方法：直接利用电脑专用AutoCAD软件绘制或利用扫描图板把图形输入电脑；
3. 单线数控仿形切割机适用于切割的制品体积大或数量少；
4. 多线数控仿形切割机适用于切割的制品体积小或数量大。电阻丝切割系统可以同时使用多至二十条电阻丝，图形输入电脑后，所有电阻丝可平行运行，一次切割多达二十个复杂的三维形体。

Main Features

- 1.The machine makes use of controlling the X-axis and the Y-axis to combine them into a graph. At the same time, the resistance wire is used to cut all kinds of EPS products. Its operation route is to make use of the graphics inputted into the computer, and automatically sends impulse signals to control the X and Y axes. When the machine is equipped with a rotation device, the 3D (three-dimensional) can be realized;
- 2.Two methods: to directly use AutoCAD to draw or to scan the graphics and then input them into the computer;
- 3.The Single-Wire CNC Shape Cutting Machine is applicable to cutting products with big volumes or in small numbers;
- 4.The Multiple-Wire CNC Shape Cutting Machine is applicable to cutting products with small volumes or in large quantities. The Resistance Wire Cutting System can use 20 resistance wires at the same time, after inputting the graphics into the computer all the resistance wires can run in parallel, and can cut 20 complicated 3D (three-dimensional) shapes per each cutting.



技术参数 Technical Data

序号 Number	项目 Items	单位 Unit	型号 Type	EPSCNC3-2000x1240	EPSCNC3-3000x3000	EPSCNC3-4000x4000
1	加工制品最大尺寸 Max. Cut Product Dimension	mm		2000×1240×1240	3000×3000×1240	4000×4000×1240
2	切割丝长度 Length of Hot-Cutting Wire	mm		2000	3000	4000
3	切割厚度 Cutting Thickness	mm		0-1240	0-1240	0-1240
4	切割速度 Cutting Speed	m/min		0-3.5 (变频调速) (frequency-conversion timing)	0-3.5 (变频调速) (frequency-conversion timing)	0-3.5 (变频调速) (frequency-conversion timing)
5	同时参加切割电热丝数量 Number of Hot Wires working simultaneously	piece		1-20	1-20	1-20
6	电热丝规格 Hot Wire Specifications	mm		0.4-0.8	0.4-0.8	0.4-0.8
7	电机功率 Power Supply	kw		2.25	2.25	3.0
8	变压器容量 Transformer Capacity	KVA		8	8	8
9	CNC控制方式 Control Mode			全自动 Automatic	全自动 Automatic	全自动 Automatic
10	控制软件 Control System			专用 AutoCAD	专用 AutoCAD	专用 AutoCAD
11	切割模式 Cutting Mode			三维 Three Dimension	三维 Three Dimension	三维 Three Dimension
12	最大外形尺寸 Max. Outer Dimension	mm		2500×2000×2500	3500×3500×2500	4500×4500×2500
13	整机重量 Machine Net Weight	kg		1800	2300	2800

※ 上表中切割尺寸为定型产品的尺寸，也可按用户要求做适当调整。
The cutting sizes mentioned in the above table are our standard cutting sizes. But customers can also provide their own different cutting sizes.



1. EPS原料预发
Pre expanding



2. 阻燃材料混合
Retardant material mixing



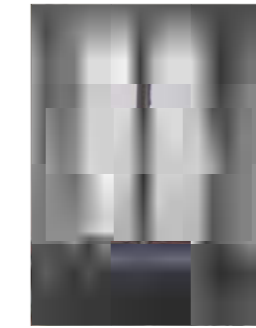
3. 覆膜涂层、烘干、筛选
Coating, drying and screening



4. 改性EPS板材成型
Coating EPS block molding



5. 板材翻转、输送
Blocking turning over and transferring



6. 板材烘干
Block drying



7. 带自动调丝的板材振动切割、打包
Block vibration cutting with automatic adjusting wire system & packaging

主要特点

1. 改性EPS的阻燃材料分为有机为主和无机为主两大类，生产出的产品分为红聚苯板和灰聚苯板；
2. 覆膜涂层系统由全自动阻燃材料混合投料机、覆膜涂层机、烘干机、筛选机分开排列组成，并自动精确控制，形成连续自动生成，做到覆膜均匀、快捷高效、环保节能；
3. 阻燃材料混合系统和覆膜涂层系统可分别使用两类不同配方的阻燃材料；
4. 覆膜涂层系统是将混合好的阻燃材料准确计量后，喷射到每个EPS泡粒表面，实现改性EPS制品的防火性能。
5. 烘干系统是将已覆膜涂层的EPS泡粒进行干燥输送、结块粒子分离以及回收部分脱落粉尘。



技术参数 Technical Data

序号 Number	项目 Items	单位 Unit	型号 Type	EPSCT4000
1	涂膜混合机体积 Volume of Mixer	M ³		4
2	干燥机体积 Volume of Dryer	M ³		4
3	EPS 投料料斗 EPS Beads Inlet Hopper	M ³		4
4	EPS 计量料斗 EPS Beads Weighing Hopper	M ³		6
5	难燃液计量 Coating Liquid Weighing	L		160
6	固化剂计量 Hardening Agent Weighing	L		60
7	涂膜机生产效率 Capacity of Coating Machine	m ³ /h		20-30
8	蒸汽压力 Steam Pressure	Mpa		0.6
9	蒸汽进口直径 Steam Inlet DN	mm		80
10	压缩空气压力 Compressed-Air Pressure	Mpa		0.6
11	压缩空气进口直径 Compressed-Air DN	mm		80
12	难燃液压力 Coating Liquid Pressure	Mpa		0.3
13	难燃液进口直径 Coating Liquid Inlet DN	mm		32
14	固化剂压力 Hardening Agent Pressure	Mpa		0.3
15	固化剂进口直径 Hardening Agent Inlet DN	mm		25
16	电源 Power Supply	功率 Power	KW	100
		电压 Voltage	V	380
17	外形尺寸 Outer Dimension	mm		16000*4000*4800

※ 上表中尺寸为定型产品的尺寸，也可按用户要求做适当调整。
The sizes mentioned in the above table are our standard sizes. But customers can also provide their own different cutting sizes.

Main Features

1. The flame retardant materials of coated EPS are classified into two categories: organic and inorganic. The color of final products are divided into red and gray ;
2. The coating system consists of automatic fire-retardant material mixing and feeding machine, coating machine, dryer, screening machine etc. It featured with automatically precise control, automatically continuous generation, uniform coating, fast efficient, aenvironmental and energy saving;
3. The retardant materials mixing system and coating system and are using two different formulations of fire-retardant materials;
4. The coating system are spraying the mixed and accratue measured retardant materials on EPS beads to achieve fire retardant performance.
5. Drying system is already covered EPS foam coated dried grain transportation, caking particle separation and recovery of part of the off dust.

热固性改性EPS防火保温板材的应用优势

改性EPS板是对传统的阻燃型EPS泡粒单体表面采用环保型阻燃材料进行覆膜涂层改性，使每个EPS泡粒形成相对独立的有机颗粒防火单元，不仅保持了传统EPS板保温性能好、轻质节能、低烟无毒、易于施工等优点，还弥补了传统EPS板阻燃效果差的缺点。

传统EPS板不耐高温，因受热而融化变成可燃性物质，在燃烧状态下熔融滴落，滴落物可助长火势蔓延或二次燃烧。

改性EPS板生产采用热固成型工艺，产品具有热固材料燃烧的特性，在火焰的直接作用下具有结碳、无滴落物、无卷曲、无融化现象，燃烧后表面形成一层碳化层，离火自熄，有效保持层内的泡沫结构，可避免产生池火进而发生二次燃烧助长火势蔓延的缺陷，从而达到阻燃的效果。

产品可广泛应用于薄抹灰外墙保温系统、保温装饰一体化板和彩钢夹芯板等领域。



主要特点

1. 机器适用于EPS制品生产厂的边角料，报废料或回收料；
2. 破碎机是将EPS块料在连接部位分开。经过破碎、筛分的颗粒粒径均匀、饱满、粉尘少。与新鲜的预发颗粒混合后再次成型，制成各种规格的EPS制品；
3. 除尘机是将回收料中的粉尘和微粒去除；
4. 混合机是将去除粉尘的回收料和新鲜料按一定比例混合；
5. 破碎机与除尘机，混合机配套，形成完整的EPS回收装置。

Main Features

1. This machine is suitable for Scraps from the edges, EPS wastes, and the Recycled material of EPS products manufacturing Plant;
2. The crusher breaks the EPS block at the joints, after been crushed, the diameter of the screened beads are uniform, fully filled, with less dust. After mixing with the fresh pre-expanded beads, and then do the forming again which is then used to produce various sizes of the EPS products;
3. The EPS De-duster will remove all dust and particles from the recycled EPS beads;
4. The Mixer will, with certain proportion, mix the recycled EPS beads without dust and the fresh EPS beads together;
5. The EPS Crusher can be supplied with EPS De-Duster and Mixer to form a complete set of EPS Recycling System.

EPS 破碎机

EPS Crusher



技术参数 Technical Data

序号 Number	项目 Items	单位 Unit	EPSCR-B	EPSCR-C
1	破碎效率 Production Capacity	m³/h	15-20	30-35
2	碎粒直径 Diameter of crushed beads	mm	4-10	4-10
3	总电机功率 Power Supply	kw	4.5	15
4	最大外形尺寸 Max. Outer Size	mm	600×900×1600	2300×1850×2000
5	整机重量 Machine Net Weight	kg	600	1000



EPS 除尘机

EPS De-Duster

技术参数 Technical Data

序号 Number	项目 Items	单位 Unit	EPSDD-B
1	生产能力 Production Capacity	m³/h	25-30
2	总电机功率 Power Supply	kw	7.5
3	最大外形尺寸 Max. Outer Size	mm	2850×1300×1600
4	整机重量 Machine Net Weight	kg	750

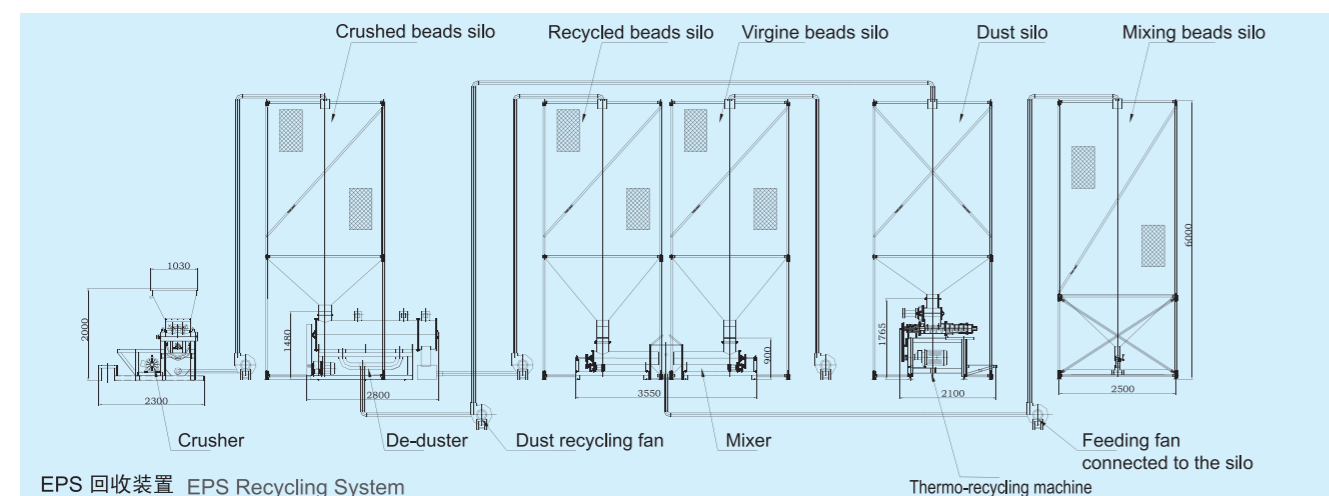


EPS 混合机

EPS Mixer

技术参数 Technical Data

序号 Number	项目 Items	单位 Unit	EPSMI-B
1	生产能力 Production Capacity	m³/h	60-110
2	回收料混合比例 Ratio of Recycled Beads Mixture	%	5-25
3	总电机功率 Power Supply	kw	3.7
4	最大外形尺寸 Max. Outer Size	mm	3500×840×910
5	整机重量 Machine Net Weight	kg	850



EPS 回收装置 EPS Recycling System



主要特点

1. 机器适用于EPS制品生产的边角料、报废料和回收料；
2. 将EPS回收料经破碎机破碎后放入EPS热熔机；
3. 机器内部温度为140~190度，EPS回收料经过高温熔化，形成液体，之后经过挤出螺杆，冷却后，形成条块状制品；
4. EPS回收料经过热熔机形成的制品可作为XPS的原料或用于制造其他塑料制品。

Main Features

1. This machine is suitable for Scraps, EPS wastes, and recycling materials in EPS product manufacturing Plant;
2. Put the recycled EPS materials which are crushed inside the crusher into the EPS Thermo-Recycling Machine;
3. When the internal temperature of this machine is 140~190°C, the recycled EPS material will melt under high temperature to form a liquid, and then it will go through squeezing screw, and after cooling, will form bulk products;
4. The product, formed from the EPS recycled materials which have been processed inside the Thermo-Recycling Machine, can be used as raw materials for XPS or other plastic productions.



技术参数 Technical Data

序号 Number	项目 Items	单位 Unit	EPSTR-B
1	生产能力 Production Capacity	kg/h	120-180
2	总电机功率 Power Supply	kw	31
3	最大外形尺寸 Max. Outer Diameter	mm	1950x1260x1860
4	整机重量 Machine Net Weight	kg	1200

Main Features

1. The machine has the PLC (Programmable Logic Controller) and Computerized Touch Screen to accomplish the automatic recycling process of pushing the product into the correct position, wrapping, packaging, sealing, etc;
2. Its operation is stable, easy to operate, no noise, and low energy consumption;
3. This machine can be supplied with various types of EPS product Equipments, can package different sizes of the EPS products.

主要特点

1. 机器采用PLC可编程工业控制器和电脑触摸屏，完成机器将制品向工作位置的推入，缠绕，包装，封切等自动循环过程；
2. 机器性能稳定，操作简单，无噪音，耗电少；
3. 机器可和各种EPS产品设备配套，包装各种规格的EPS制品。

技术参数 Technical Data

序号 Number	项目 Items	单位 Unit	EPSPM-B
1	生产能力 Production Capacity	m³/h	15-20
2	总电机功率 Power Supply	kw	0.5
3	最大外形尺寸 Max. Outer Diameter	mm	1800x1200x2200
4	整机重量 Machine Net Weight	kg	780



EPS 缠绕机

EPS Wrapping Machine

主要特点

1. 机器采用PLC可编程工业控制器和电脑触摸屏。完成机器将制品向工作位置的推入，缠绕，包装，切断等自动循环系统；
2. 集中电气自动控制板材头尾的加强包装圈数；
3. 缠绕机前后辊道滚筒离地高度可根据客户要求调整；
4. 可实现端面包装，并有自动夹膜，断膜系统。

Main Features

1. This machine uses the PLC (Programmable Logic Controller) and Computer Touch Screen to accomplish the automatic recycling process of pushing the product into the working position, wrapping, packaging, sealing, and putting onto the roller, etc;
2. Integrate the electrical control to automatically control and enhance the number of rounds of packaging of EPS blocks from head to tail;
3. The height of the front and back rollers to the floor of the Wrapping Machine depends on the customers' requirements;
4. Can achieve face(side) packaging, and has automatic clipping and cutting plastic films system.

技术参数 Technical Data

序号 Number	项目 Items	单位 Unit	EPSWM-B
1	缠绕制品尺寸 Product Dimension	mm	3000~12000x600~1250
2	最大对角线尺寸 Max. Diagonal Size	mm	1600
3	PE缠绕膜宽度 Wrapping Film Width	mm	250~500
4	PE缠绕膜厚度 Wrapping Film Thickness	mm	18~30
5	缠绕速度 Wrapping Speed	r/min	0~25
6	总电机功率 Power Supply	kw	3
7	最大外形尺寸 Max. Outer Diameter	mm	18000x2860x4400
8	整机重量 Machine Net Weight	kg	1860





主要特点

热收缩膜打包是目前国际市场上较为先进的包装方法之一，采用这种方法包装，收缩膜紧贴商品，所以又叫贴体包装，它适宜各种不同形状的商品包装。与采用其它包装方式相比收缩包装成本低，经济性好，且因美观而提高产品的货架展示效果及价值感。同时经过收缩包装后的产品能密封、防潮、防污染，并具有一定的缓冲作用，能减少外部冲击对产品带来的损伤，尤其包装器皿时能防止器皿破碎时飞散。此外，可减低商品被拆、被窃的可能性。酚醛/聚氨酯/岩棉热收缩打包机专业用于外墙保温板材料的收缩包装，可以使保温板材料的高效率收缩包装，同时也可用于木材、钢材、建材、陶瓷、家用电器等各类建筑材料的包装。

- 1. 烘房适应各种热缩膜（如PE、PVC、POF等）；
- 2. 烘房从入口到出口，设有三段温度控制，客户可根据制品与包装膜的不同，调节烘房内各段不同的温度；
- 3. 为使制品加入均匀，烘房底部设有加热系统，并且温度可以控制；
- 4. 烘房内设有热风内循环对流系统，薄膜收缩时更加均匀，收缩时间更短，提高了热效率，达到节能的目的；
- 5. 制品采用链条与滚筒输送模式，输送过程中不阻挡热量的传递，保证制品上下部收缩均匀。

Main Features

The Shrink Film Packaging is one of the more advanced packaging methods in the international market. By this method, the packaging of goods will be beautiful-looking and shrink film close to the goods tightly. So it is also called skin packaging. It is suitable for a variety of different shapes of goods packaging. Compared to other packaging way, its cost is lower, and it can improve the product outside looking and sense of value. Shrink packaging products can be sealed, moisture, anti-pollution, and has a certain buffering effect, can reduce the damage caused by external shocks on the product, especially when the packaging containers to prevent the flying when the vessels broke. In addition, lower commodity demolished, lower the possibility of theft. Phenolic / PU / rock wool heat shrinkable packer is professionally applied in external insulation board materials, shrink packaging, you can make the high efficiency of the insulation board materials, shrink packaging, but also can be used for wood, steel, building materials, ceramics, household appliances and other types of construction materials of the packaging.

- Applicable to a variety of shrink film
- 1. Drying room is fit for various packing films (such as PE, PVC, POF and so on).
- 2. From the entrance to the exit, there are three areas of thermal controls in the drying room. Customers could control temperatures of different areas according to the difference of the products and the packing films.
- 3. There is a heating system at the bottom of drying room and temperature control system to make the input products well-distributed.
- 4. There is an inner-loop hot air circulating convective system in drying room, which makes the films even during shrinking. It improves thermal efficiency and saves the energy.
- 5. It adopts chain type and rolling type to deliver products, which does not block the heat transfer during delivery, and makes the products packaged evenly.



ICF楼板自动连接机 Deck floor connecting machine for ICF system



EPS/EPP silos



EPS/EPP drying room





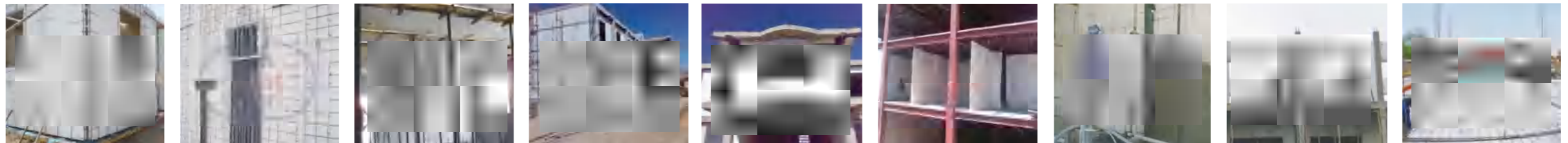
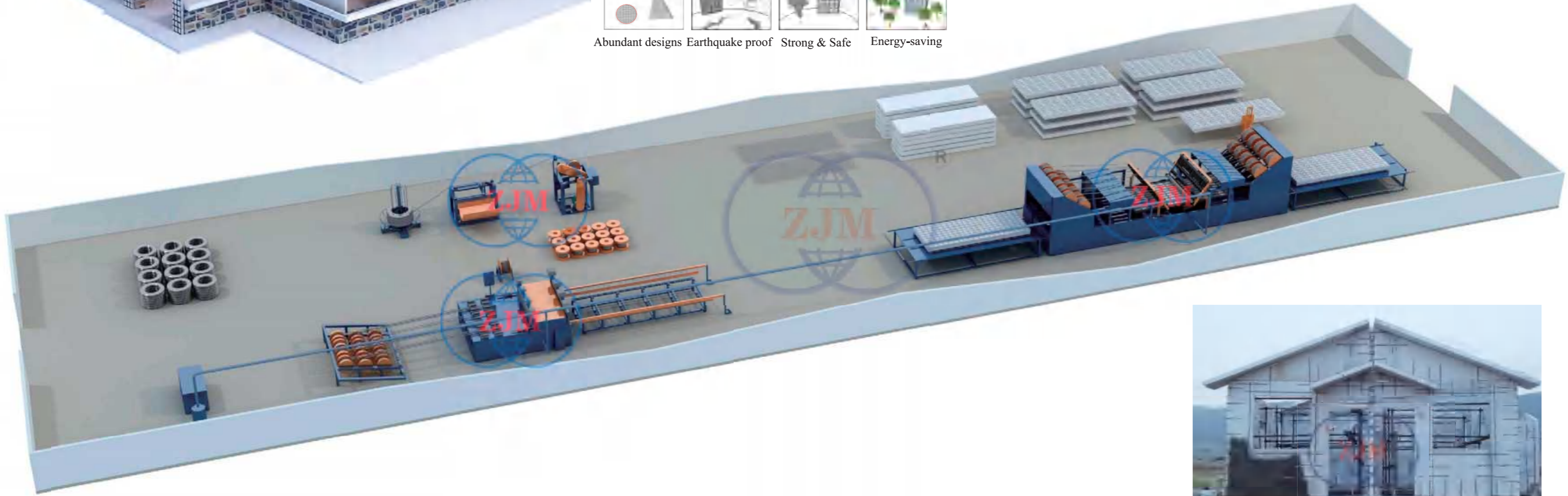
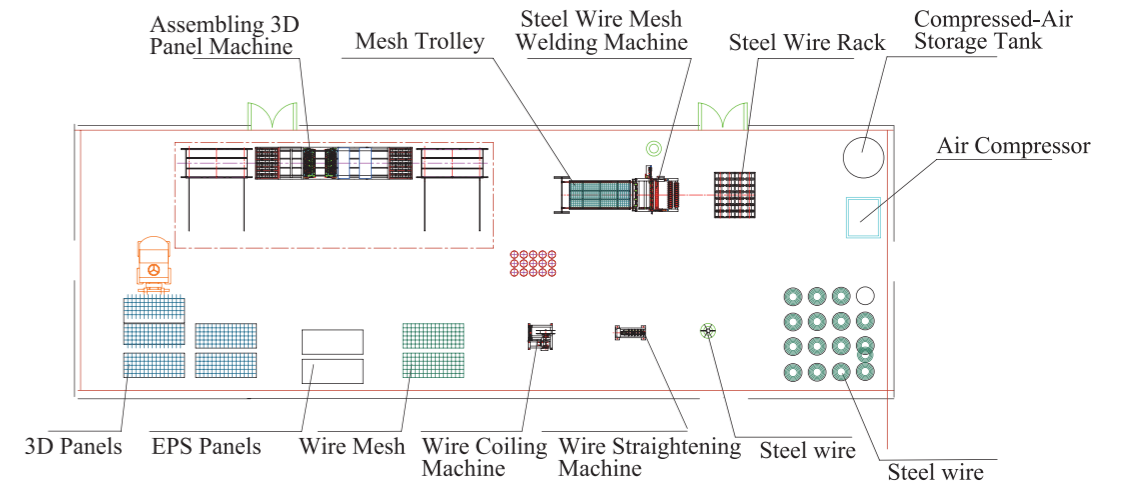
Sometric Layout of a 3D Panel Plant



Low cost Sound Insulation Small weight Fire proof



Abundant designs Earthquake proof Strong & Safe Energy-saving





主要特点

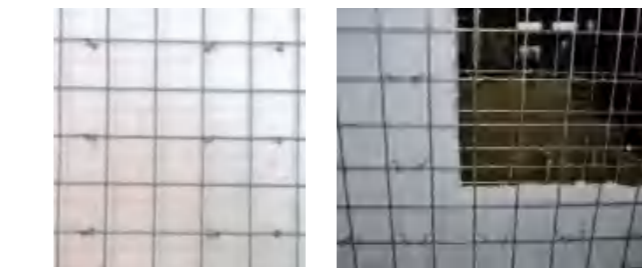
1. 设备将横丝和纵丝焊接成钢丝网片（网片宽1200mm，网格尺寸50×50mm或50×100mm）；
2. 采用PLC控制系统实现钢丝的自动矫直、切断；
- 3.A型设备采用机械式传动系统；
- 4.B型设备采用整体气动系统确保设备操作稳定、可靠性高、寿命长，设备送丝采用整体气动夹紧装置；
- 5.横丝采用整体矫直和切断系统，操作稳定，精度高；
- 6.采用自动报警装置，易于操作和维护；
- 7.按照预先设定的网片长度自动切断，落入网片推车。



Main Features

- 1.The Welding Machine welds the horizontal and vertical wires to form a steel wire mesh. Mesh Width: 1200mm, Grid size: 50 x 50mm or 50 x 100mm;
- 2.PLC control system automatically straightens, welds and cuts the steel wire;
- 3.Type A machine has the mechanical transmission system;
- 4.Type B machine makes use of the integrated pneumatic system to ensure that the operation is stable, high reliability and long life span of the equipment.And the wire feeding of the equipment uses the integrated pneumatic clamping device.
5. The horizontal steel wires use the integrated straightening and cutting system to ensure stable operation and high accuracy;
6. The Automatic Alarm Device is easy to operate and maintain;
- 7.It will automatically cut the steel wire mesh according to the pre-set mesh length and drops into the mesh cart.

NO.	项目 Items	Type Unit	3D-MW-3B	3D-MW-4B
1	生产效率 Production Capacity	m ² /hr	80	70
2	焊接强度 Welding Intensity	N	Pull-off force for each spot≥350	Pull-off force for each spot≥730
3	纵丝误差 Mesh Longitudinal Error	mm	≤±0.2	≤±0.2
4	漏焊率 Welding Defect Rate	%	≤1	≤1
5	铁丝直径 Steel Wire Diameter	mm	2.0-3.0	3.0-4.0
6	电源 Power Supply		380V, 50Hz, 60KVA	380V, 50Hz, 75KVA
7	最大外形尺寸 Max. Outer Dimension	mm	15800x2780x1500	15800x2780x1500
8	设备总重 Machine Net Weight	kg	2800	3000



主要特点

1. 设备用斜插丝将进入设备的上下钢丝网片和可发性聚苯乙烯夹芯板焊接成钢丝网架夹芯板，设备也生产用于外墙外保温系统的单面钢丝网架夹芯板（该钢丝网架夹芯板只有单面钢丝网片）；
2. 设备整体采用气动系统，运行稳定，可靠性高，寿命长；
- 3.A型设备送丝机构采用气囊式传动，焊接角度不可调；
- 4.B型设备送丝机构采用气动夹紧装置，焊接角度可调节；
5. 设备具有自我检测功能和自动报警系统，易于操作和维护；
6. 设备可以生产两种钢丝网架夹芯板（稀插板和密插板）；
7. 设备亦可生产岩棉钢丝网架夹芯板。

Main Features

- 1.This machine uses the slanted steel wire to weld the upper wire mesh to the lower wire mesh to form the 3D Panel. It can also produce the Single-Sided 3D Panel which is used in external wall insulation system (i.e. 3D Panel has only one side of it with the Steel Wire Mesh);
- 2.Has the integrated pneumatic system to ensure its stable operation, high reliability and long life span;
- 3.The Steel Wire Feeder of the A type equipment has the pneumatic system and the welding angle is not adjustable;
- 4.The Steel wire Feeder of the B type equipment has the pneumatic clamping device and the welding angle can be adjusted;
- 5.This equipment has a self-testing capability and automatic alarm system, which is easy to operate and maintain;
- 6.It can produce two types of 3D Panels (Sparse Flashboard and Dense Flashboard);
- 7.It can also produce the mineral wool 3D Panel.



技术参数 Technical Data

NO.	项目 Items	Type Unit	3D-AP-3B	3D-AP-4B
1	产品尺寸 Product Dimension	mm	(2000-6000)x1200x(40-100)	(2000-6000)x1200x(40-100)
2	生产效率 Production Capacity	m ² /h	60	40
3	焊接强度 Welding Intensity	N	Pull-off force for each spot≥330	Pull-off force for each spot≥680
4	3D板侧弯强度 3D Panel Lateral Bend	mm	≤L/660	≤L/660
5	3D板对角误差 3D Panel Diagonal Error	mm	≤5	≤5
6	3D板漏焊率 3D Panel Welding Defect Rate	%	≤3	≤3
7	铁丝尺寸 Steel Wire Diameter	mm	2.0-3.0	3.0-4.0
8	电源 Power Supply		380V, 50Hz, 60KVA	380V, 50Hz, 75KVA
9	最大外形尺寸 Max. Outer Dimension	mm	16000x1850x2600	16000x1850x2600
10	设备总重 Machine Net Weight	kg	6000	8000

