

## HIGH FREQUENCY SOLAR INVERTER PV1800 PREM Series

1.6-5.5KW | Dual output | WiFi

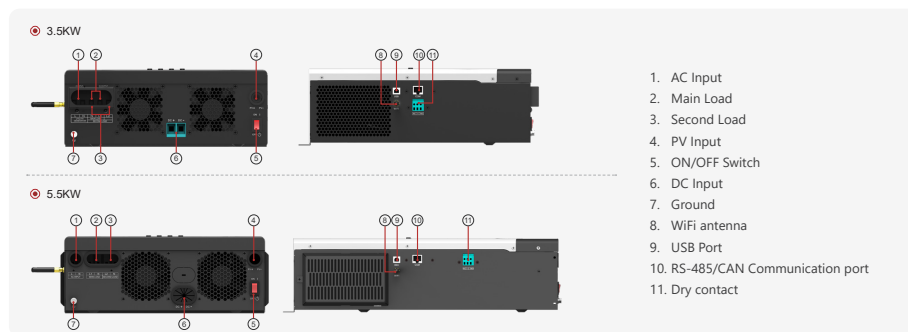
PV1800 PREM is a multi-function inverter/charger, combining functions of inverter, MPPT solar charger and battery charger to offer uninterruptible power support in portable size. PV1800 PREM Series can run without battery. The Maximum PV array open circuit voltage can reach 400V/450V. which Can help customers make full use of solar energy.



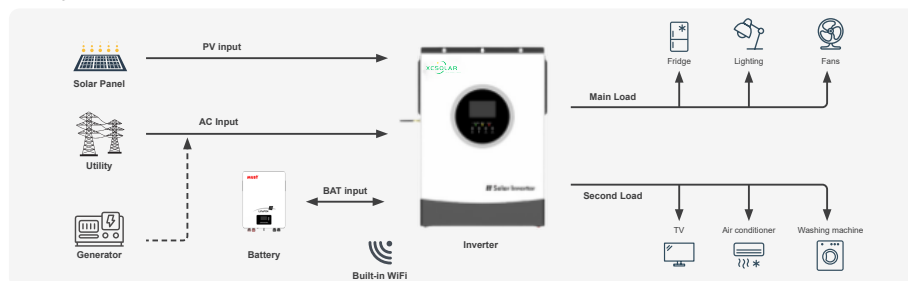
- Pure sine wave output
- Smart LCD setting (Working modes, Charge Current, Charge Voltage, etc).
- Built-in MPPT solar charge controller
- Combining solar system, AC utility, and battery power source to supply continuous power
- Overload, short circuit and Deep discharge protection
- Cold start function
- Support USB, RS485, CAN monitoring function
- WIFI remote monitoring (Built in wifi module and antenna)
- PV/ AC activation function
- BMS communication function (CAN Port)
- Dual output for smart load management



### Back panel description



### Solar system connection



MODEL	PV18-1612 PREM	PV18-2524 PREM	PV18-3024 PREM	PV18-3524 PREM	PV18-5548 PREM
Nominal Battery System Voltage	12VDC	24VDC	24VDC	24VDC	48VDC
<b>INVERTER OUTPUT</b>					
Rated Power (Main+Second Load)	2000VA/1600W	2500VA/2500W	3000VA/3000W	3500VA/3500W	5500VA/5500W
Surge Power	3200W	5000W	6000W	7000W	11000W
Waveform	Pure sine wave				
AC Voltage Regulation (Batt.Mode)	230VAC±5%(Setting)				
Inverter Efficiency(Peak)	90~93%				
Transfer Time	10ms (UPS / VDE4105) / 20ms (APL)				
<b>AC INPUT</b>					
Voltage	230VAC±5%				
Selectable Voltage Range	170~280VAC(UPS) / 90~280VAC(APL) / 184~253VAC(VED4105)				
Frequency Range	50Hz / 60Hz(Auto sensing)				
<b>BATTERY</b>					
Normal voltage	12VDC	24VDC	24VDC	24VDC	48VDC
Floating Charge Voltage	13.7VDC	27.4VDC	27.4VDC	27.4VDC	54.8VDC
Overcharge Protection	15VDC	30VDC	30VDC	30VDC	60VDC
<b>SOLAR CHARGER &amp; AC CHARGER</b>					
Maximum PV Array Open Circuit Voltage	400VDC	400VDC	400VDC	450VDC	450VDC
Maximum PV Input Current	16A	18A	18A	18A	28A
Charging Algorithm	3-Step (Flooded Battery, AGM / GEL / LEAD Battery), 4-Step (Li)				
Maximum PV Array Power	2000W	4000W	4000W	4000W	6000W
PV Array MPPT Voltage Range(Typ.)	30~320VDC			60~360VDC	
Maximum Solar Charge Current	80A	100A			
Maximum AC Charge Current	80A	60A	60A	60A	100A
Maximum Charge Current	80A	100A			
<b>MECHANICAL SPECIFICATIONS</b>					
Machine Dimension (W*H*D)	367*290*111mm	367*290*111mm	367*290*111mm	367*318*122.5mm	454*318*122.5mm
Package Dimension (W*H*D)	446*394*187mm	446*394*187mm	446*394*187mm	459*410*200mm	544.5*410*200mm
N.W (kg)	6.4kg	6.6kg	6.6kg	7.2kg	9.0kg
G.W (kg)	7.4kg	7.6kg	7.6kg	8.2kg	10.5kg
<b>OTHER</b>					
Humidity	5% to 95% Relative humidity (Non-condensing)				
Operating Temperature	0°C~50°C				
Storage Temperature	-15°C ~60°C				
<b>CERTIFICATION &amp; STANDARDS</b>					
CE-EMC+LVD (EN6100-6-3, EN6100-6-1+EN IEC62109-1, EN IEC62109-2)					