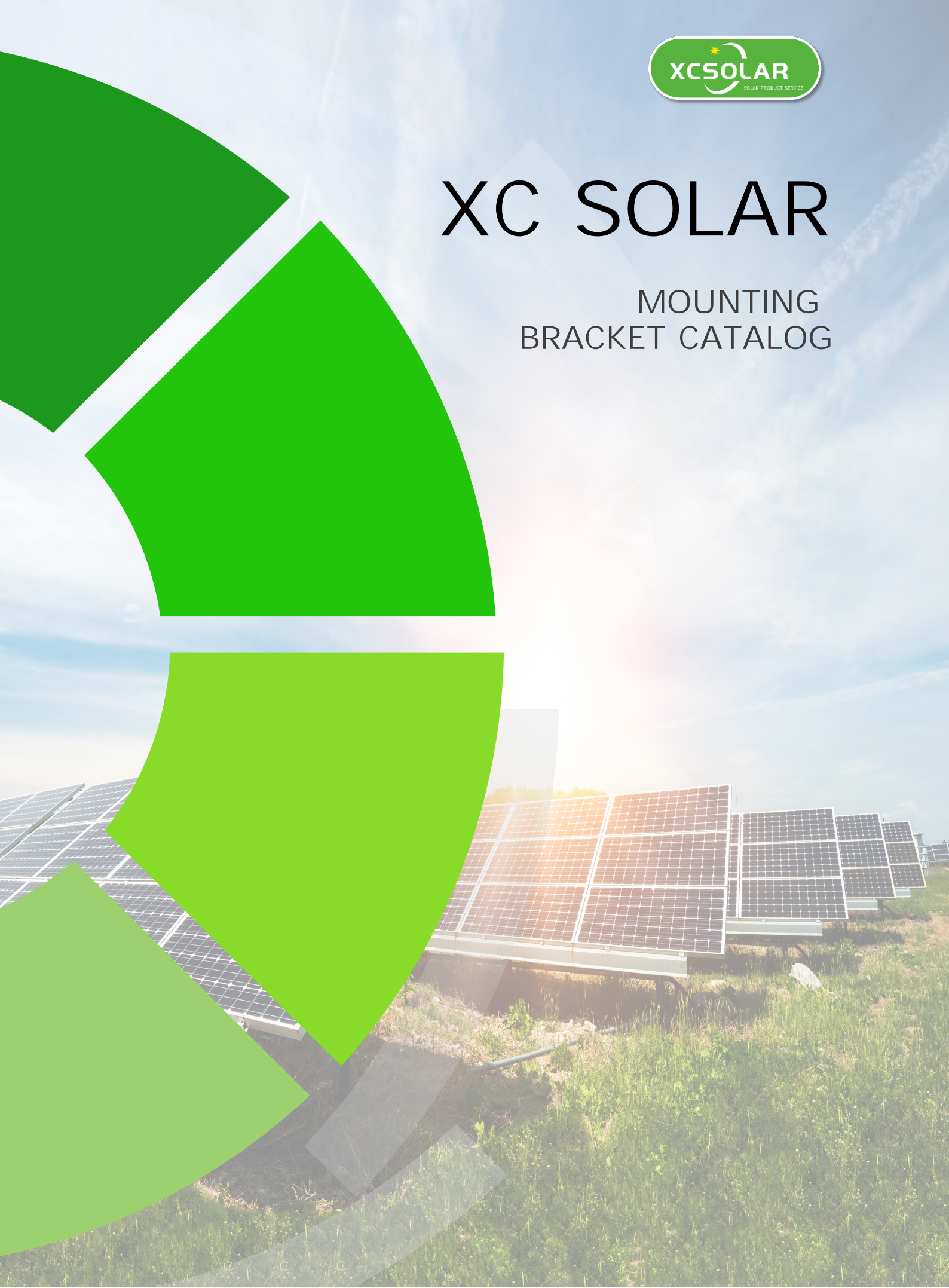




# XC SOLAR

## MOUNTING BRACKET CATALOG







# XC solar

•XC Solar was established in [2007](#) by a group of experienced China engineers who committed themselves to innovation in Photovoltaic system, the [Overseas Business Department](#) in Wujin District, Changzhou ; [Factory base](#) in Jintan District, Changzhou City, is a group company integrating cell production, glass manufacturing, photovoltaic module manufacturing, photovoltaic system integration and services, with a construction area of about [200,000 m<sup>2</sup>](#) and a registered capital of [600 million](#) yuan.

•XC focuses on the [R & D, manufacturing, sales and system design](#), construction and operation of the core components of photovoltaics and medium-high new energy. In the photovoltaic area, we can provide integrated services for the design, [construction](#) and [operation of distributed, industrial and commercial, poverty alleviation](#) and [large-scale ground-based photovoltaic power plants](#). XC Solar is the [leading integrated energy solution service provider](#).

## TABLE OF CONTENT

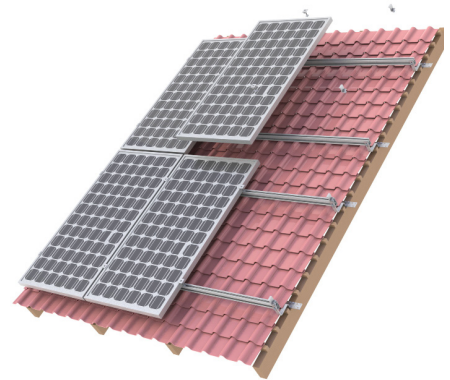
### WE CARE AND WE CAN

WE CARE ABOUT WHAT YOU NEED  
WE CAN PROVIDE WHAT YOU WANT

NO	CONTENT
4	TILE SOLUTIONS
6	TIN SOLUTIONS
8	TILT SOLUTIONS
9	MODULE CLAMP & ACCESSORIES
10	RAIL
12	NOVA
14	EAST WEST SYSTEM
15	BALLAST
16	GROUND SOLUTION
18	GROUND SCREW
19	CARPORT
21	WALKWAY
22	FENCE
23	CERTIFICATIONS & WARRANTY

## TILE SOLUTIONS

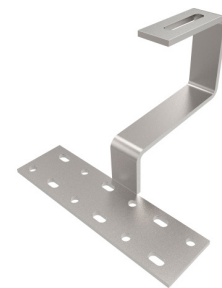
XCSOLAR's Universal Tiled Roof Mount is suitable for almost any flat roof. It accommodates all framed and unframed solar panels currently on the market. XCSOLAR's complete product range of mounting brackets provide for fast and simple fixing to purlins or rafters, without affecting the integrity or function of the tiles themselves. Roof brackets are available for traditional profile tiles and flat tiles. To simplify connection of support rails to the brackets, XCSOLAR's rails are designed to allow fixing nuts to be simply swivelled into the rails.



- TRH-F01



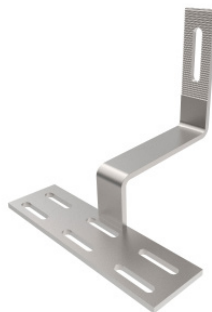
- TRH-F03



- TRH-F04



- TRH-F05



- TRH-F11



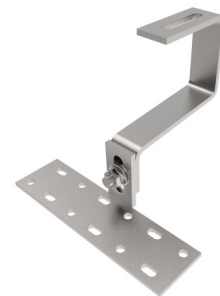
- TRH-F12



- TRH-A01



- TRH-A03

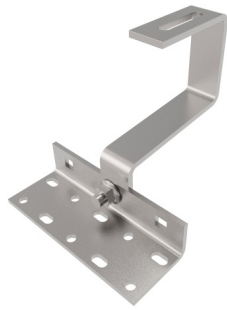


- TRH-A04

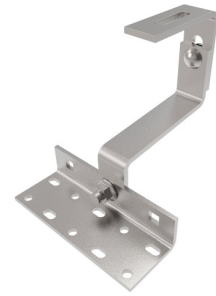




- TRH-A08



- TRH-A09



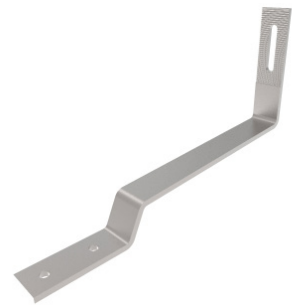
- TRH-A10



- TRH-A50



- TRH-S02



- TRH-S06



- TRH-S07



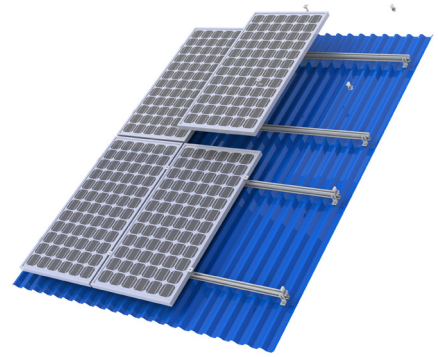
- TRH-S09



- TRH-S10

## TIN SOLUTIONS

XCSOLAR's Tin (Metal) Roof Mounting Solution is suitable for almost any flat roof. It provides a simple and cost-effective solution for mounting all framed and unframed solar panels currently on the market. XCSOLAR's wide range of mounting brackets provide for fast and secure fixing to sheet metal, purlins or rafters and for different roofing types at angles from 10 to 60°. To simplify connection of support rails to brackets, XCSOLAR's rails are designed to allow fixing nuts to be simply swivelled into the rails.



- TRB-F04



- TRB-F05



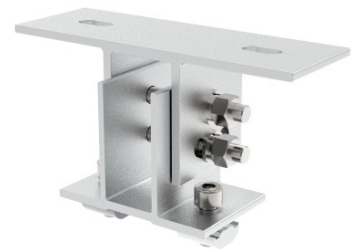
- TRB-F03



- DS-01-200



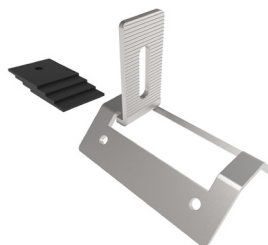
- DS-03-200



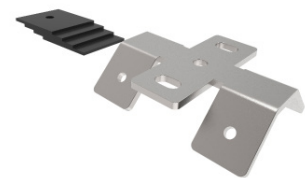
- AC-ACQ



- TRH-S11



- TRH-S12



- TRH-S13

## TIN INTERFACE



- TRB-C01



- TRB-C02



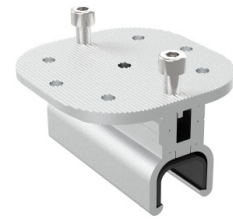
- TRB-C03



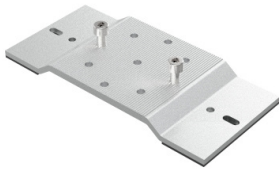
- TRB-C04



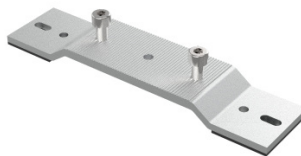
- TRB-C05



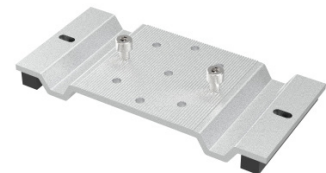
- TRB-C08



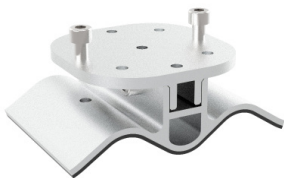
- TRB-C06



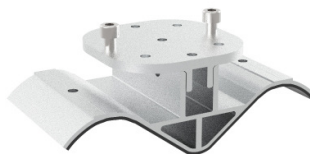
- TRB-C07



- TRB-C09



- TRB-C10



- TRB-C11



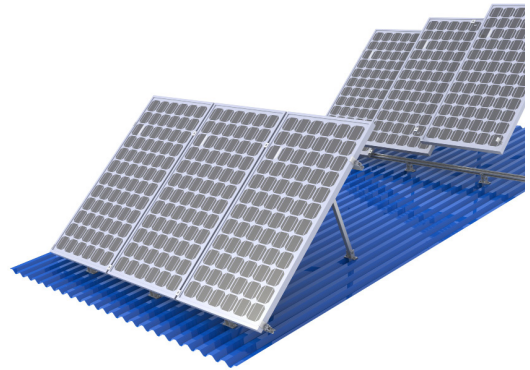
- TRB-C12



## TILT SOLUTIONS

XCSOLAR's Tilt Systems are quick and easy to install, allowing solar panels to be installed in the angle ranges from 10 to 15 degrees, 15 to 30 degrees and 30 to 60 degrees. To simplify installation, components are pre-assembled before delivery to site.

- Available tilt angles 10–15°, 15–30° and 30–60°
- Easy to fold, save storage and transportation
- Simple and fast installation
- Easy access to components and connections



– TRB-AFK-A



– TRB-AFK-C



– TRB-AFK-F



– TRB-AFL



– TRB-ARL-A



– TRB-ARL-F



– TRB-F10



– TRB-F11

## MODULE CLAMP & ACCESSORIES



- PC-ECS



- PC-ICS



- PC-ICL



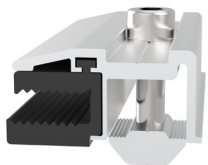
- PC-FEC



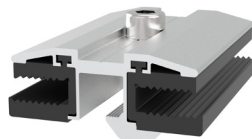
- PC-FIC



- AC-ELG01



- PC-TEC02



- PC-TIC02



- AC-EPL02



- PC-LEC

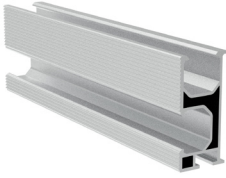


- PC-LIC

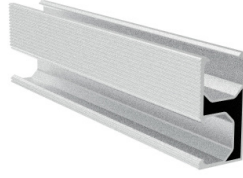


- AC-PCC01

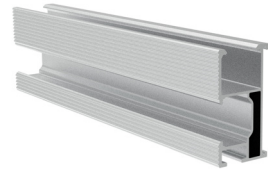
## RAIL



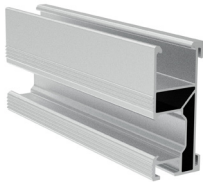
- RA-SSA



- RA-SSB3



- RA-SSC



- RA-SSE

## RAIL JOINER



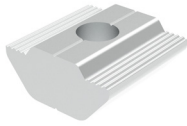
- SK-SSB



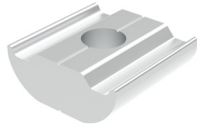
- SK-SSC



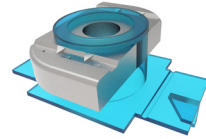
## RAIL FIXING



- AC-NS1



- AC-NS2



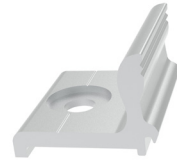
- AC-CSN



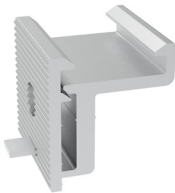
- AC-LEX



- AC-NU1



- AC-RCU



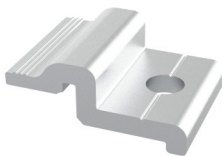
- AC-RU1



- AC-RCA



- AC-RCB



- AC-RCC



- AC-TBT



- AC-HN1



## NOVA STRENGTH RAIL

Maximises strength and minimises materials.  
Decreases product weight without compromising strength and durability.



## PERFECT JOINER

Slides inside Nova rail for a seamless join.  
Doesn't obstruct components from attaching to the rail across the join.  
Provides earth continuity between rails.



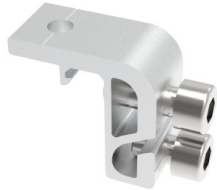
## CLIP TO RAIL

Clips into the rail resulting in a faster installation.  
Rubber pad factory attached with option for attaching an additional rubber pad for corrugated profile.  
Easily slides along rail and is height adjustable.



## UNIVERSAL MODULE CLAMP

Clips into the rail resulting in a faster installation.  
One clamp can be used as either a mid clamp or an end clamp.  
Can be used with module frame sizes from 30mm to 50mm.



## NOVA EARTHING LUG

Attaches and pierces the solar mounting rails ensuring a good earth bond between mounting system, inverter and earth stake in the event of a ground fault.



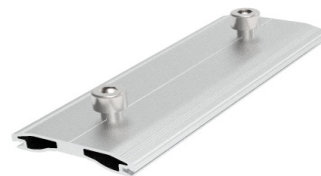
## NOVA EARTHING PLATE

Nova earthing plate pierces anodizing to ensure good earth connection between solar panels and solar mounting system.



## NOVA RAIL CABLE CLIP

To securing solar panel cables to underside of solar panels for a professional installation.



## NOVA OUTER JOINER

NOVA outer joins mounting rails for extended solar arrays



## EAST WEST SYSTEM

XCSOLAR East West Mounting System provides more stable and more consistent power throughout the day relative to south facing designs. It reduces the peak production spike at noon and widens the power duration into the morning and evening. The system can be used for flat roof and tin roof.

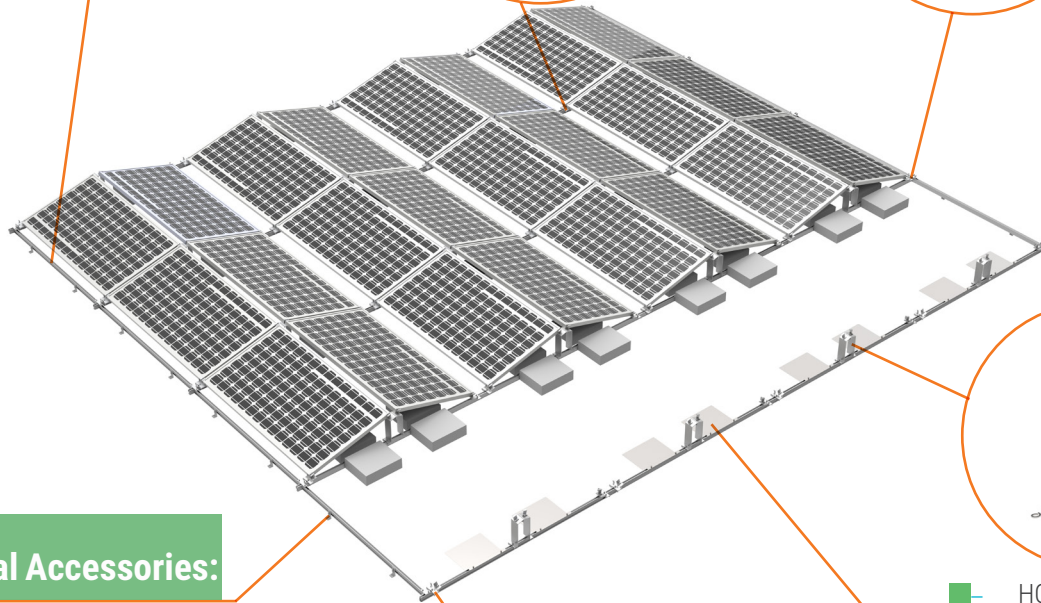
Advantages of East West Mounting System:

1. No Module Self-Shading
2. Higher Energy Production Density
3. More Consistent Power Output
4. More Aerodynamic
5. Lower Roof Loading Pressure

RA-SSB  
SSB Rail

PC-ICS-NS1  
Select Inner Clamp

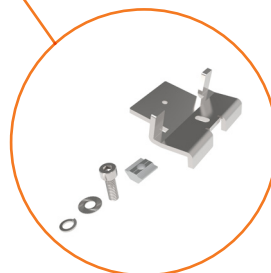
PC-ECS-NS1  
Select End Clamp



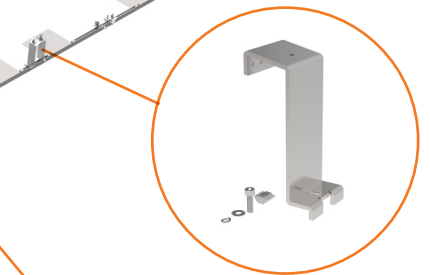
### Optional Accessories:



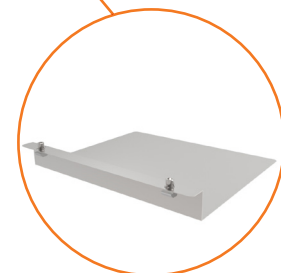
TRB-F01-NS1  
L FEET For Tin Roof



HOP-FL  
Front Leg



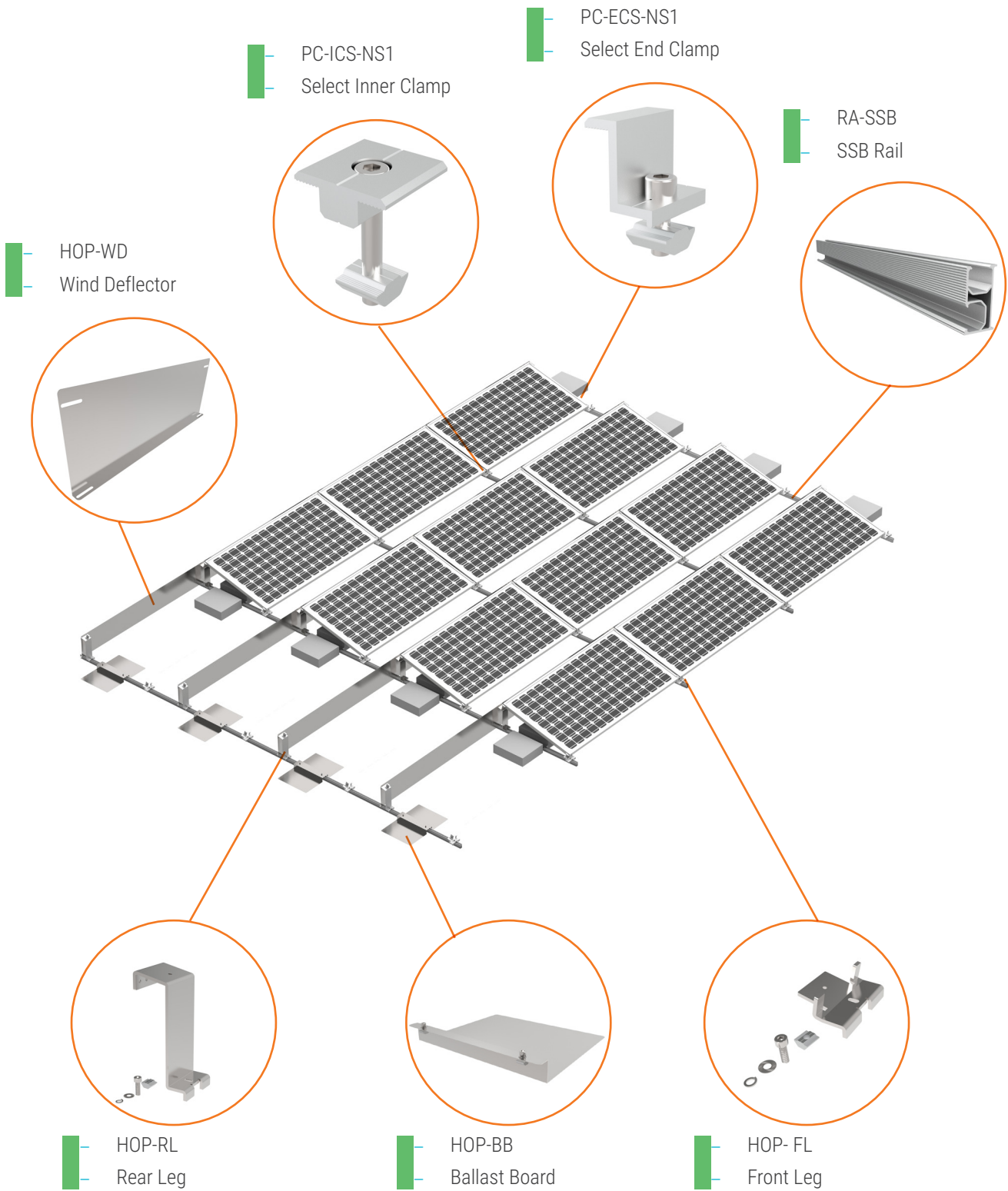
HOP-RL  
Rear Leg



HOP-BB  
Ballast Board

## BALLAST

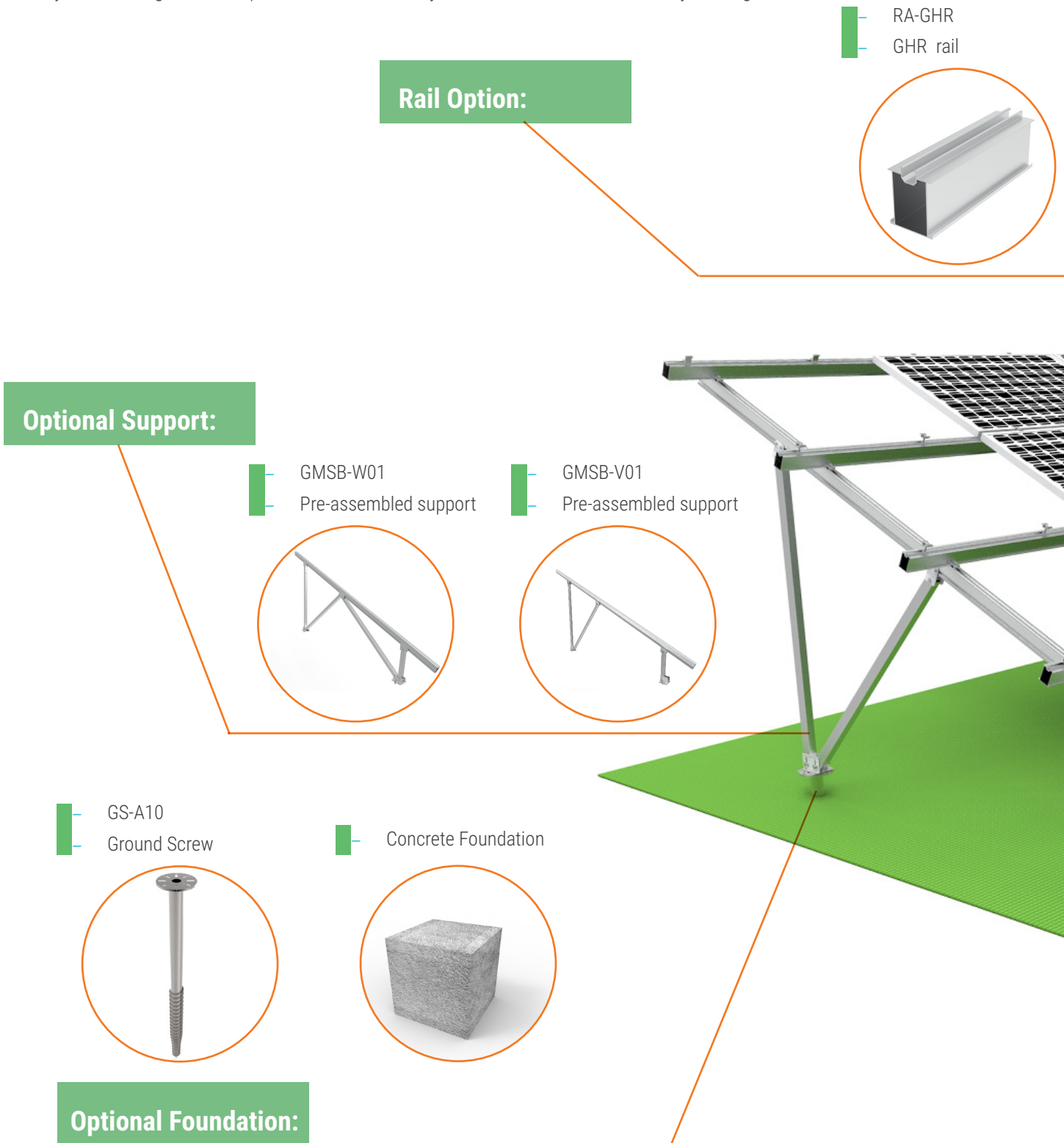
XCSOLAR's Ballast Mounting Solution is suitable for almost any flat roof. The system's rigidity and linked rail design can withstand conditions in the high wind, snow and seismic zones and its aluminum and stainless steel components can endure even the most corrosive environments.



## GROUND SOLUTION

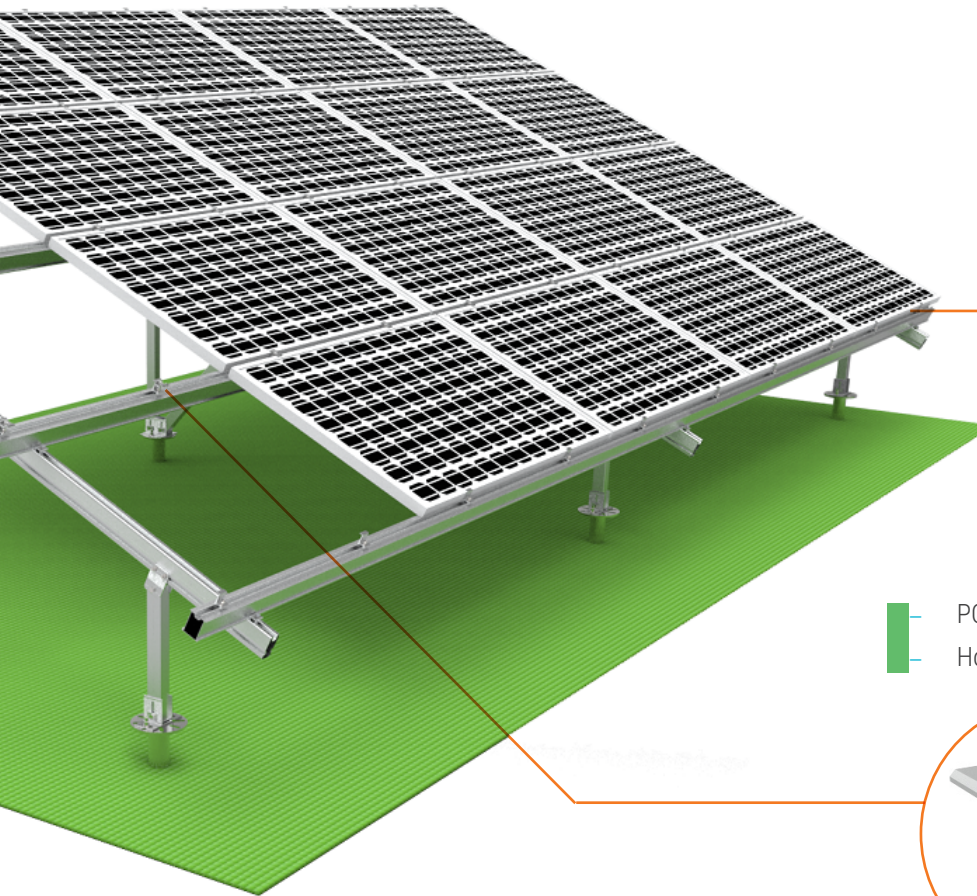
XCSOLAR's Ground Solar Mounting System is designed for medium to large scale projects installation. XCSOLAR offer a diverse range of ground mounting systems to ensure a solution is available for every application, location and environment, it is the perfect solution in the harshest environments, whether on flat roofs or on the ground.

Each system is designed for simple installation, durability, cost-effectiveness and flexibility in design and installation.

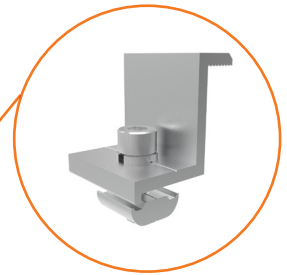




RA-GXR  
GXR rail



PC-ECH-NS2  
Horizontal End Clamp



PC-ICH-NS2  
Horizontal Inner Clamp



## GROUND SCREW

XCSOLAR 's Ground Screws provides utmost stability, efficiency and sustainability to many applications, such as photovoltaic solar farm construction. Compared to concrete footings, which can take hours to set, Powerscrew can be installed in just minutes and build on immediately.

Materials: Hot-dip Galvanized Steel Q235



- GS-A10



- GS-A20



- GS-A30



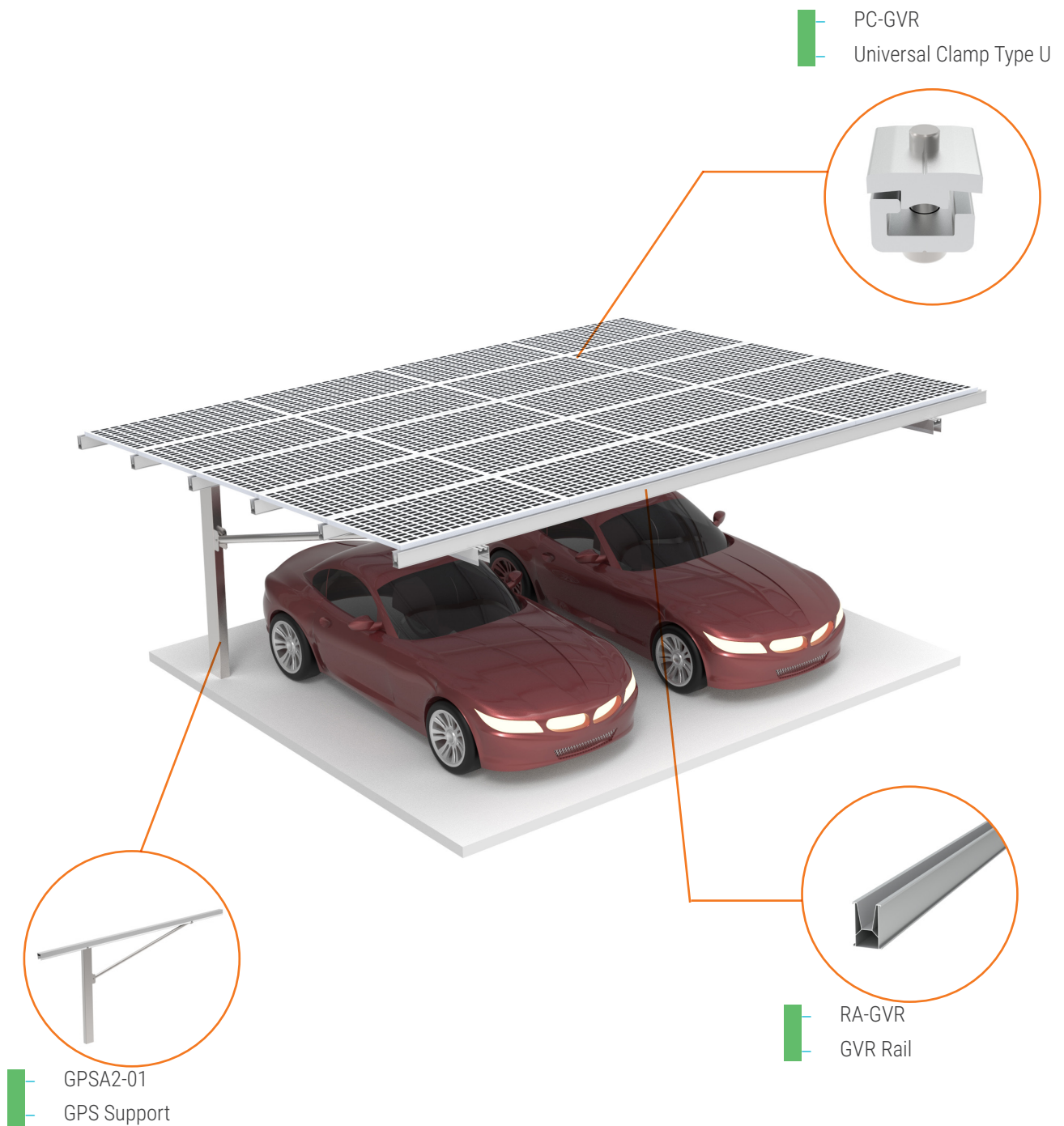
- GS-A40



- GS-A50

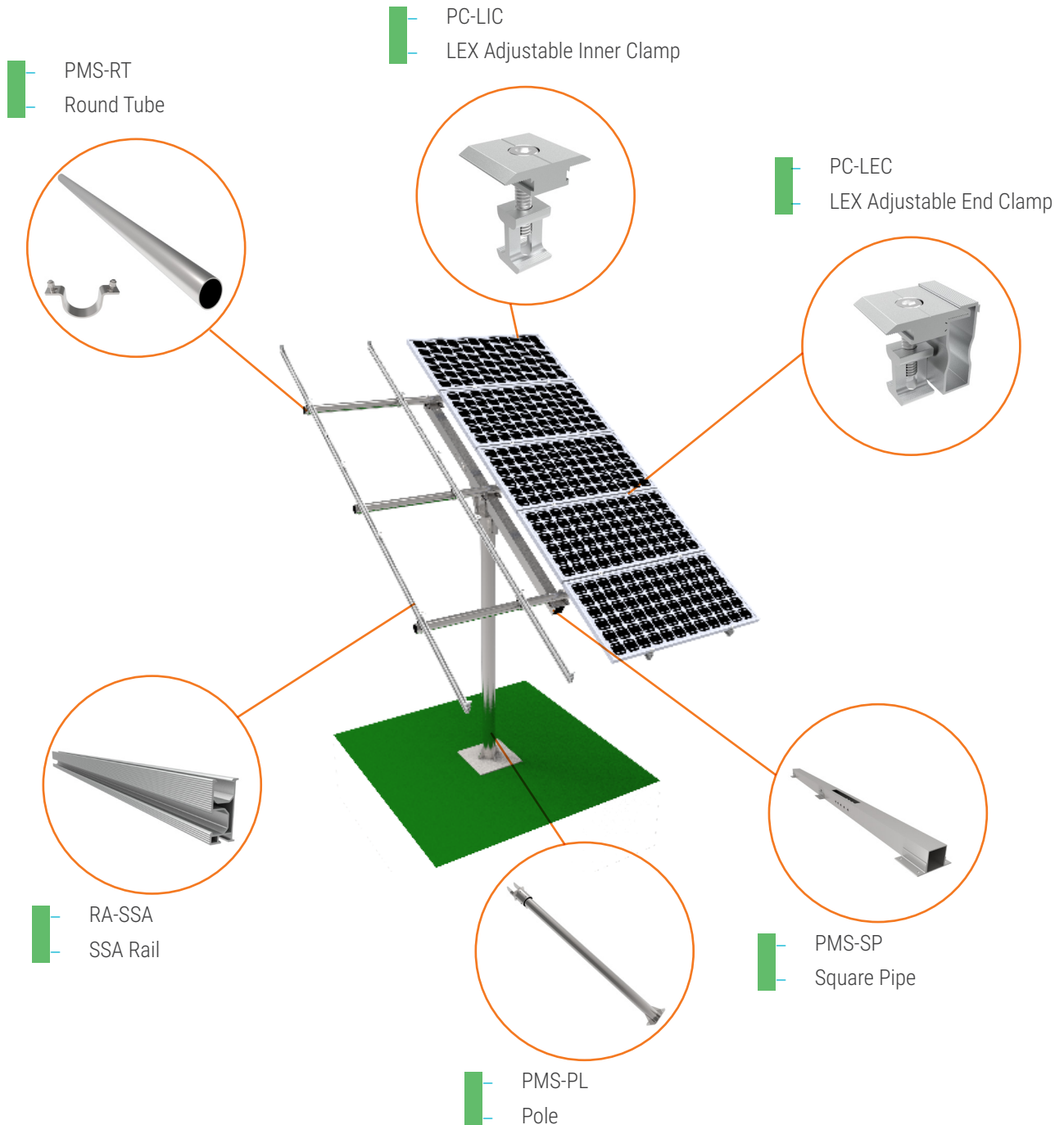
## CARPORT

XCSOLAR waterproof carport has good anti-corrosion performance in convenience construction, and can be applied to high wind and high snow area, which is suitable for projects with high waterproofing requirements.



## POLE

XCSOLAR Pole Mount System is the perfect solution when maximum flexibility is required in the installation. Any number of poles can be installed to grow the system. Poles can be rotated to the optimum orientation, and the array of panels on each pole can be turned to any one of five angles: 10, 20, 30, 40, 50 degree or according customer's requirement to maximize power generation





## WALKWAY

XCSOLAR's Walkway is a good solution in case of sediment, ice, snow, grease, oil and detergent in wet or other risks under the conditions of channels and operational areas for walking. Checkered plate channels are often used to homework, industrial workshop floor, narrow channel, terrace, warehouses, sidewalks and stair tread, etc.

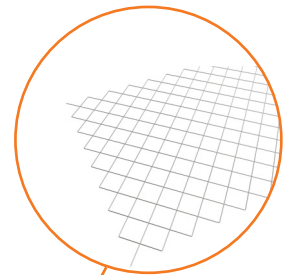
- SK-SSB
- Select Rail Joiner



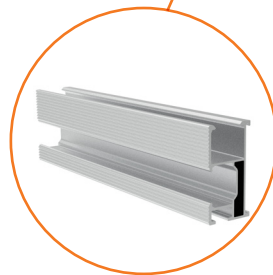
- HOP-LC
- L Connector



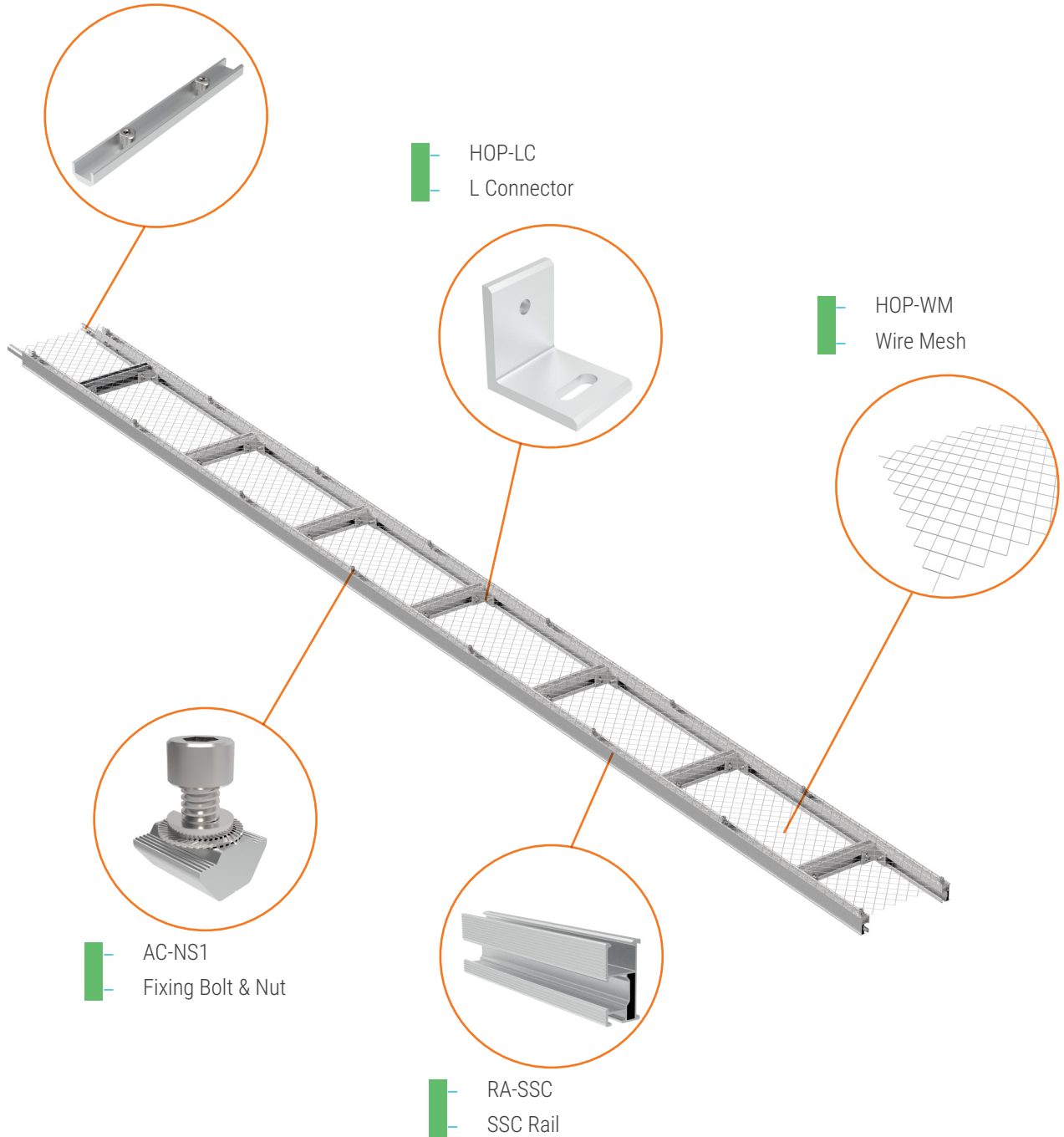
- HOP-WM
- Wire Mesh



- AC-NS1
- Fixing Bolt & Nut



- RA-SSC
- SSC Rail

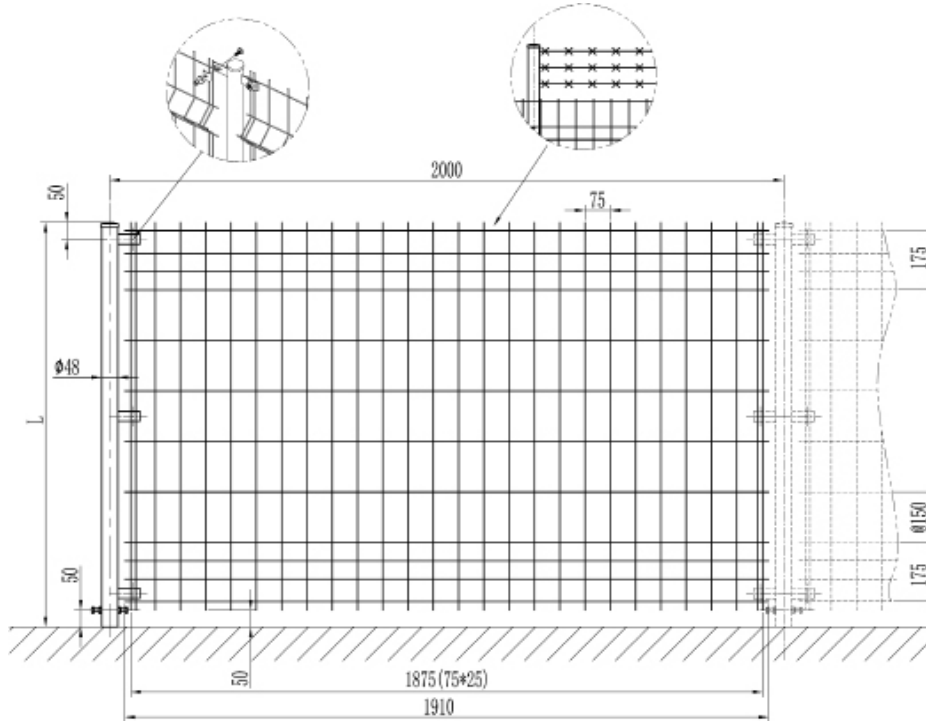


## FENCE

XCSOLAR's Fences are widely used in Solar Park, Farm, Park and Highway, etc.

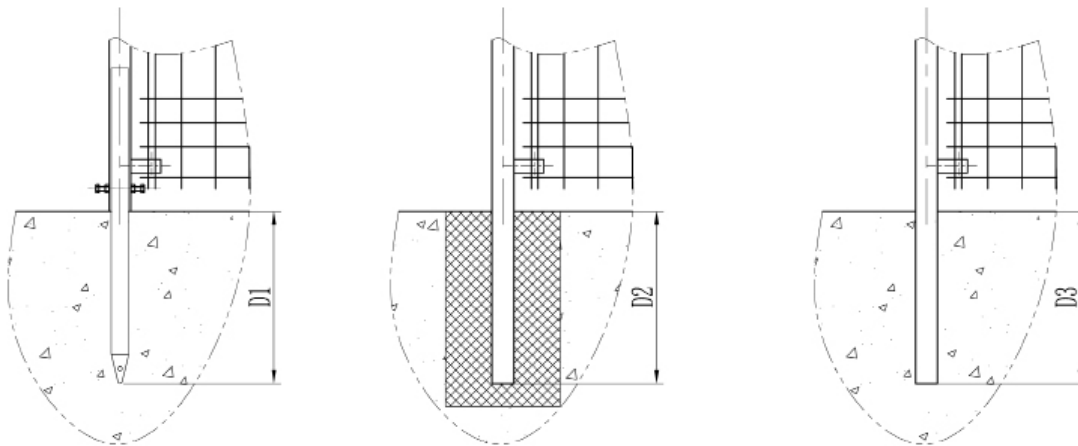
Advantages of Fence:

1. Easy & quick installation
2. Few components and no more than two kinds of tools in whole system fixation
3. All farming mounts components are made with high quality HDG Q235.



XCSOLAR FENCE

## OPTIONAL FOUNDATION



— Ground Screw

— Concrete Foundation

— Pile

## CERTIFICATIONS

Customers gain assurance that an independent Engineering has reviewed the product or esure utmost level of security specification or policy. Third-party certifications give customers confidence that the products and services they invest in are able to meet their needs from a security and trust perspective.



## WARRANTY

### 1. Quality Standards

Production should be conducted in accordance with the local National Industrial Production Standards, and meet local calculation requirement.