

专业·服务·研发·创新

PROFESSIONAL SERVICE R&D INNOVATION



PRODUCT BROCHURE

FAN | WIND WHEEL | ELECTRICAL MACHINERY



总部办公室地址：江苏省昆山市巴城镇红杨路725号浩义泰产业园

Add : Haoyitai Industrial Park, No.725, Hongyang Road, Kunshan, Jiangsu Province

客户专线【Hotline】：0512-88820290

联系人/Attn. : 李娜 / Lina (+86 13382516956)

国内网址【Domestic website】： <http://www.ycchuqiguan.com>

国际官网【International websites】： <https://www.youchengzhixin.com>



江苏佑诚至信机电设备有限公司

Jiangsu Youcheng Zhixin Electromechanical Equipment Co., Ltd

FOCUSED ON THE
ELECTROMECHANICAL
EQUIPMENT FOR
OVER 20 YEARS

PROVIDING
HIGH-QUALITY
PRODUCTS AND
SERVICES TO
GLOBAL AUTOMATION
EQUIPMENT
ENTERPRISES
UNDER THE NAME OF
YOUCHENGZHIXING

PRODUCT CATALOG

01 ABOUT US

P01-P02

Enterprise Introduction

02 CENTRIFUGAL FAN OR CROSS FLOW FAN SERIES

P03-P10

Ordinary Centrifugal Fan

P11-P14

Insulated Centrifugal Fan

P15

DF Series Centrifugal Fan

P16

CYF Cross Flow Fan

03 LONG AXIS MOTOR SERIES

P17

Ordinary Long Shaft Motor

P18

Insulated/Explosion-proof Long Shaft Motor

04 WIND WHEEL/BLADE SERIES

P19

Stainless Steel Wind Wheel/Blade

P20

Galvanized Sheet Wind Wheel/Blade

ABOUT US

2013

ESTABLISHED IN 2013 AS
A WELL-KNOWN
DOMESTIC BRAND

10

FOR 10 CONSECUTIVE YEARS IN THE DOMESTIC AND
INTERNATIONAL INDUSTRY, SALES HAVE WON A HIGH REPUTATION
IN THE MARKET



BRAND MISSION

Providing high-quality products and services to global automation equipment enterprises under the name of YOUCHENGZHIXING



BRAND VISION

Creating high-quality brands
creating first-class enterprises



CORE VALUES

Customer priority
People oriented
Excellent quality
High value

QUALITY SEEK SURVIVAL, PRESTIGE DEVELOPMENT

Since its establishment in 2013, YCZX has professional R&D personnel, high-end technical personnel and sales team, which can quickly respond to market demand. In the process of continuous innovation, strictly control product quality and process, give back to customers with high-quality and high-standard products, and serve customers with excellent professional skills.

HONEST SERVICE CUSTOMER FIRST

YCZX company adheres to the service concept of customer first and bases itself on the market with integrity. And also adheres to the customer-oriented business policy. The company constantly strengthens the service awareness of all employees, and provides customers with high-quality, efficient and thoughtful services through skills training and professional assessment for pre-sales, sales and after-sales teams!

OUR STORY

Jiangsu Youcheng Zhixin Electromechanical Equipment Co., Ltd. (referred to as "Youcheng Zhixin") Founded in 2013, it is now located in Kunshan, Jiangsu Province.

It is an enterprise that integrates research and development, design, production, and sales. The main products include: air storage tanks, vacuum pumps, motors, fans, pneumatic components, vacuum system hardware products, electronic materials, etc. The specific application areas mainly include the following: in the power industry, petrochemical industry, food industry, CNC processing, pharmaceutical industry, printing industry, aerospace industry, plastic industry, laboratory medical equipment, etc.

The company has always adhered to the principle of "customer first, people-oriented, quality first, and value first". With high-quality products, good reputation, and high-quality service, the products are best-selling nationwide and exported to 155 countries around the world. Sincerely cooperate with domestic and foreign merchants for win-win cooperation, common development, and create brilliance together!

1000

Under the Group
With 1000 employees

10000

Total area of the base
Over 10000 square meters

155

Our products are exported
to the world more than 155
countries and regions

50

And over 50 countries
established a good business
partnership

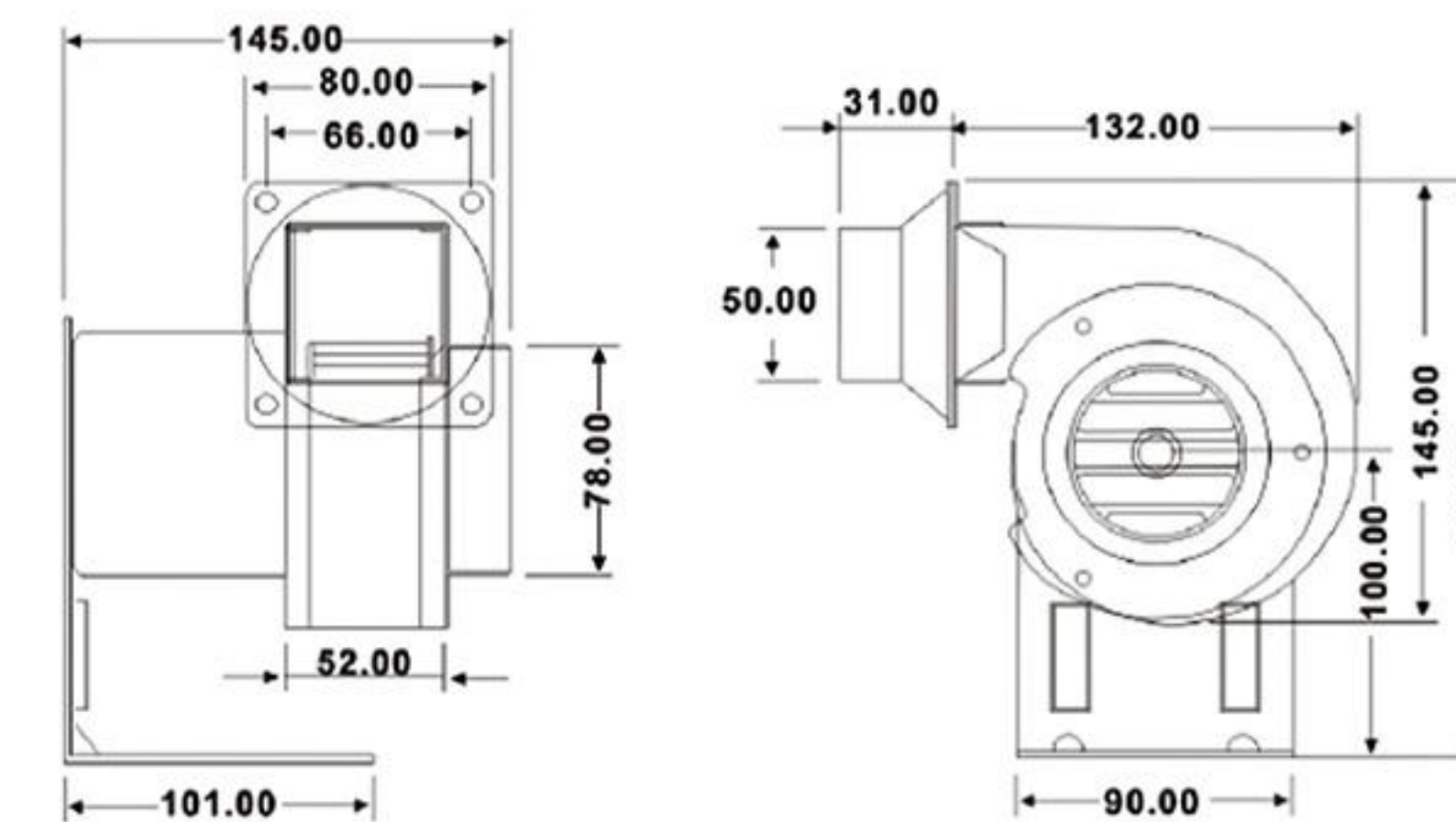
ORDINARY CENTRIFUGAL FAN

CY series centrifugal fans are equipped with induction high-temperature motors with heat insulation devices, which are isolated from high temperature during operation, and have a protective net cover (the motor shell is aluminum cylinder strips), so it has the advantages of good heat dissipation, long service life, safe and reliable operation, and small size, exquisite appearance and low noise. The volute can be installed flexibly at multiple angles in the direction of air outlet, which is easy to use.



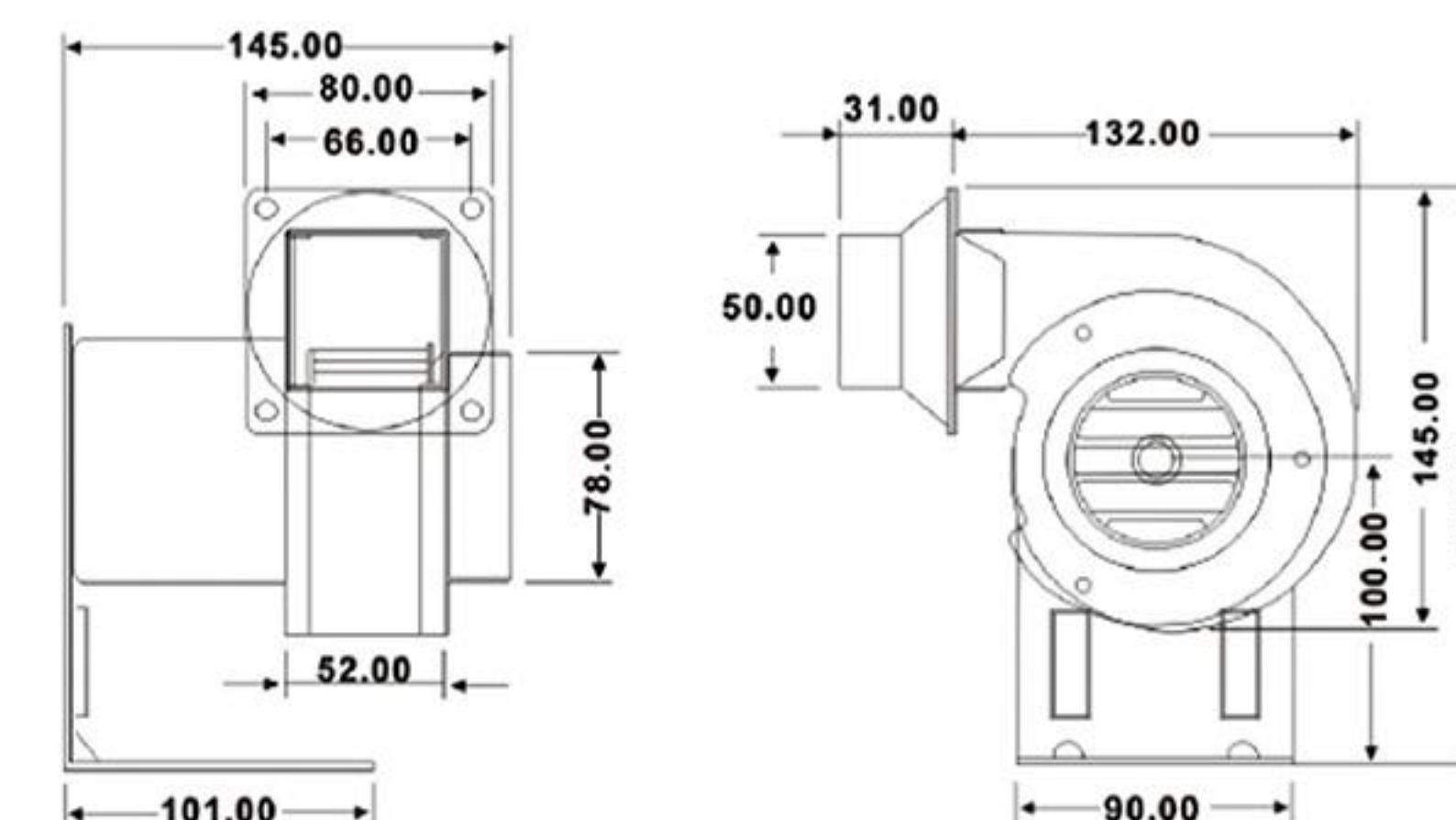
ORDINARY CENTRIFUGAL FAN

CY076



| Voltage (V) | Power (W) | Frequency (HZ) | Current (A) | Static Pressure (mmAq/RPM) | Air Volume (CMM/RPM) | Fan Direction | Noise (dB) |
|-------------|-----------|----------------|-------------|----------------------------|----------------------|---------------|------------|
| 110 | 25 | 60 | 0.32 | 19/3530 | 1.8/3380 | A or B | 43 |
| 220 | 25 | 50 | 0.2 | 13/2945 | 1.6/2860 | | 43 |

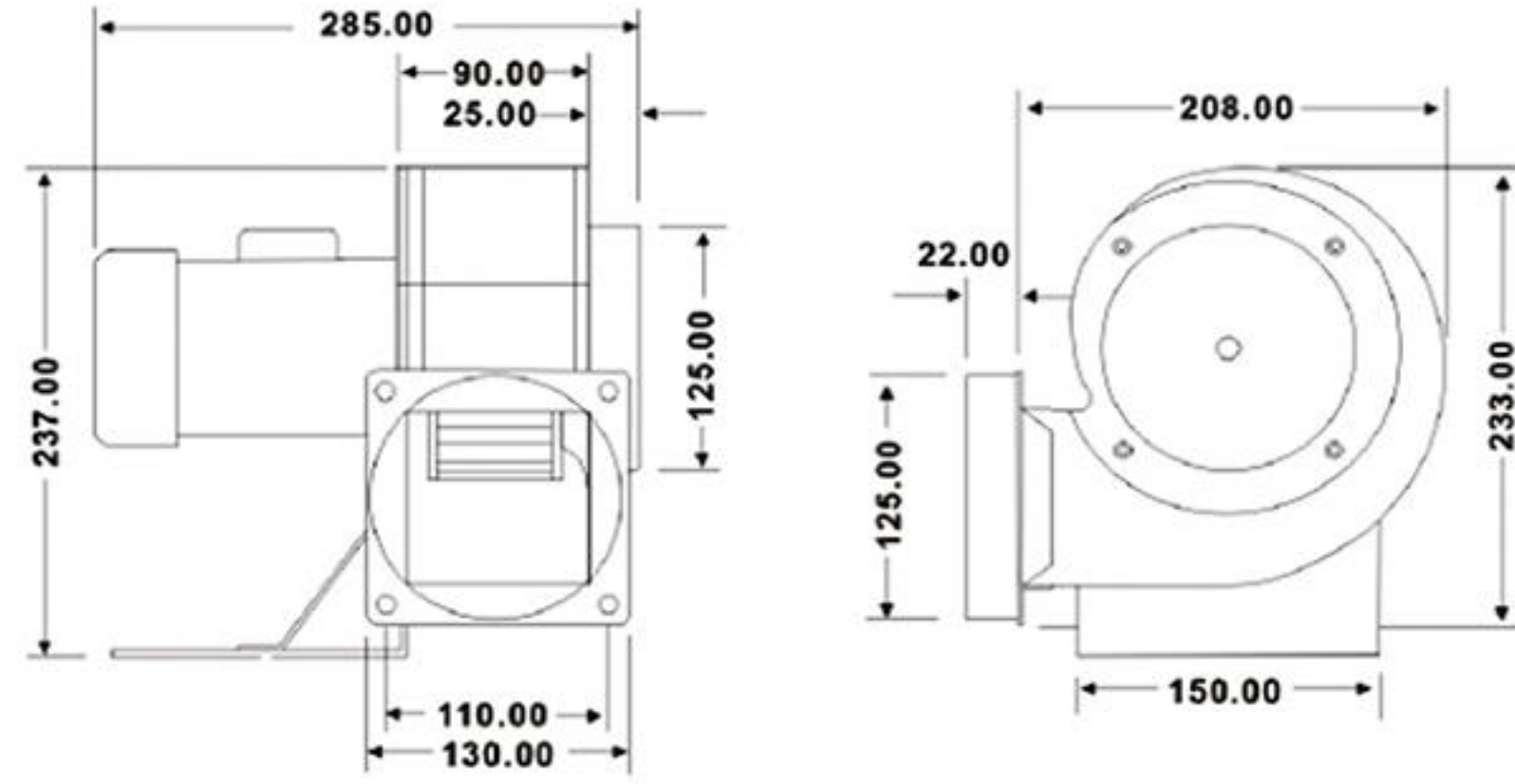
CY100



| Voltage (V) | Power (W) | Frequency (HZ) | Current (A) | Static Pressure (mmAq/RPM) | Air Volume (CMM/RPM) | Fan Direction | Noise (dB) |
|-------------|-----------|----------------|-------------|----------------------------|----------------------|---------------|------------|
| 110 | 45 | 60 | 0.55 | 26/3530 | 2.7/3445 | A or B | 45 |
| 220 | 45 | 50 | 0.3 | 18/2945 | 2.2/2870 | | 45 |

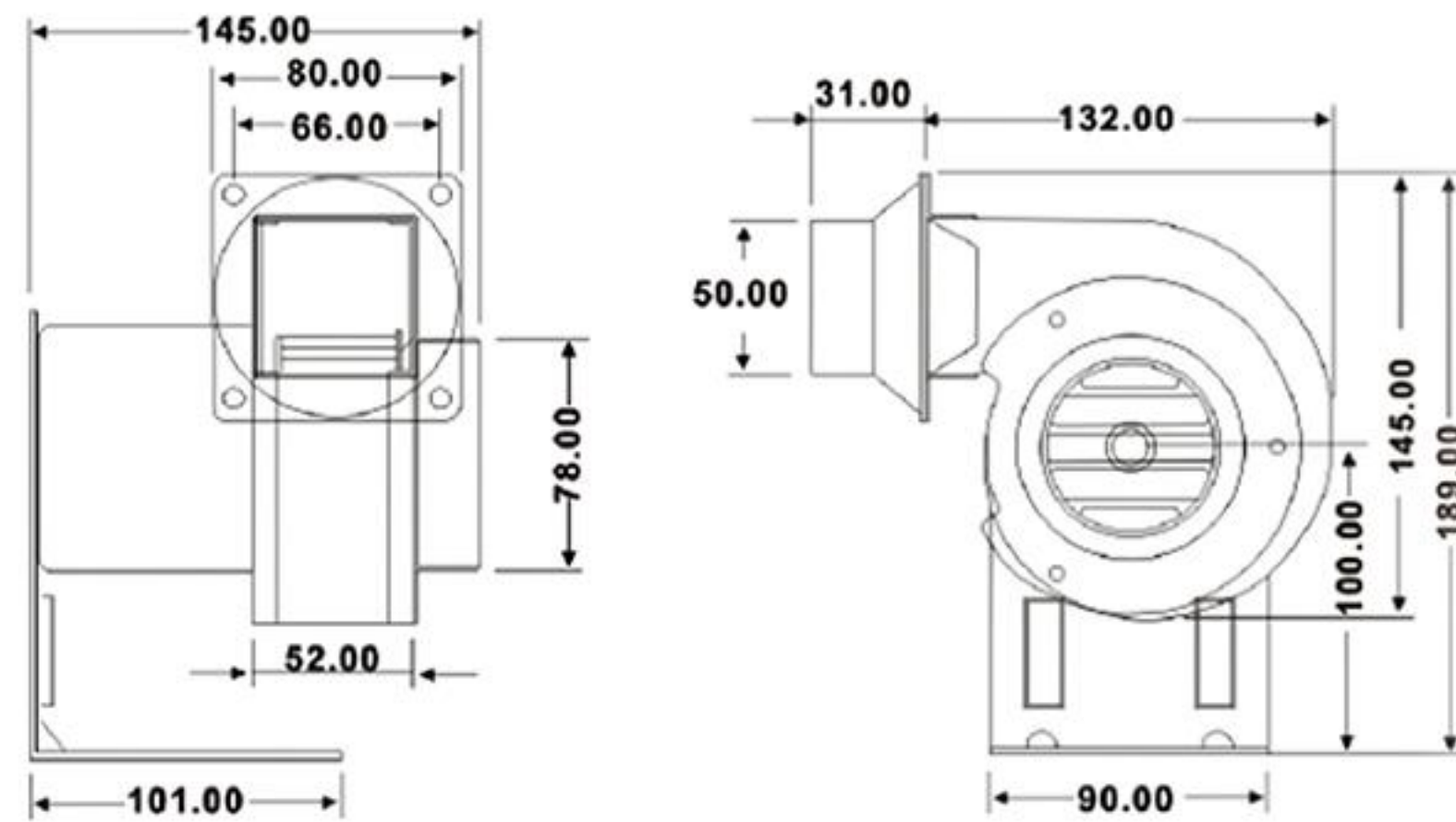
ORDINARY CENTRIFUGAL FAN

CY125



| Voltage (V) | Power (W) | Frequency (HZ) | Current (A) | Static Pressure (mmAq/RPM) | Air Volume (CMM/RPM) | Fan Direction | Noise (dB) |
|-------------|-----------|----------------|-------------|----------------------------|----------------------|---------------|------------|
| 220 | 200 | 50 | 0.9 | 46/2970 | 9.5/2800 | A or B | 51 |
| 380 | 180 | 50 | 0.47 | 46/2970 | 9.5/2800 | | 51 |

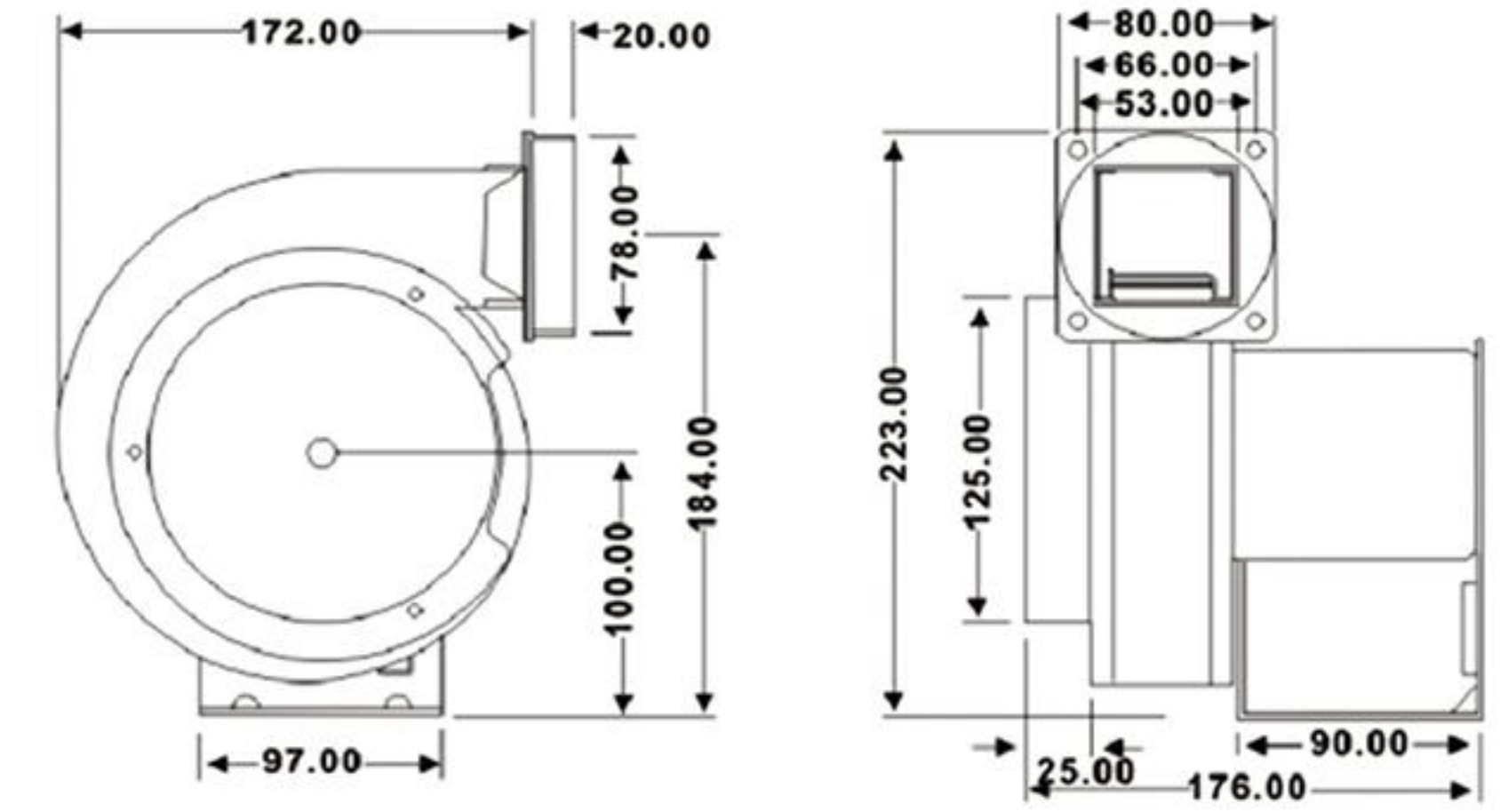
CY125M



| Voltage (V) | Power (W) | Frequency (HZ) | Current (A) | Static Pressure (mmAq/RPM) | Air Volume (CMM/RPM) | Fan Direction | Noise (dB) |
|-------------|-----------|----------------|-------------|----------------------------|----------------------|---------------|------------|
| 220 | 370 | 50 | 2.3 | 46/2970 | 9.5/2970 | A or B | 450 |
| 380 | 370 | 50 | 1.4 | 46/2970 | 9.5/2970 | | 450 |

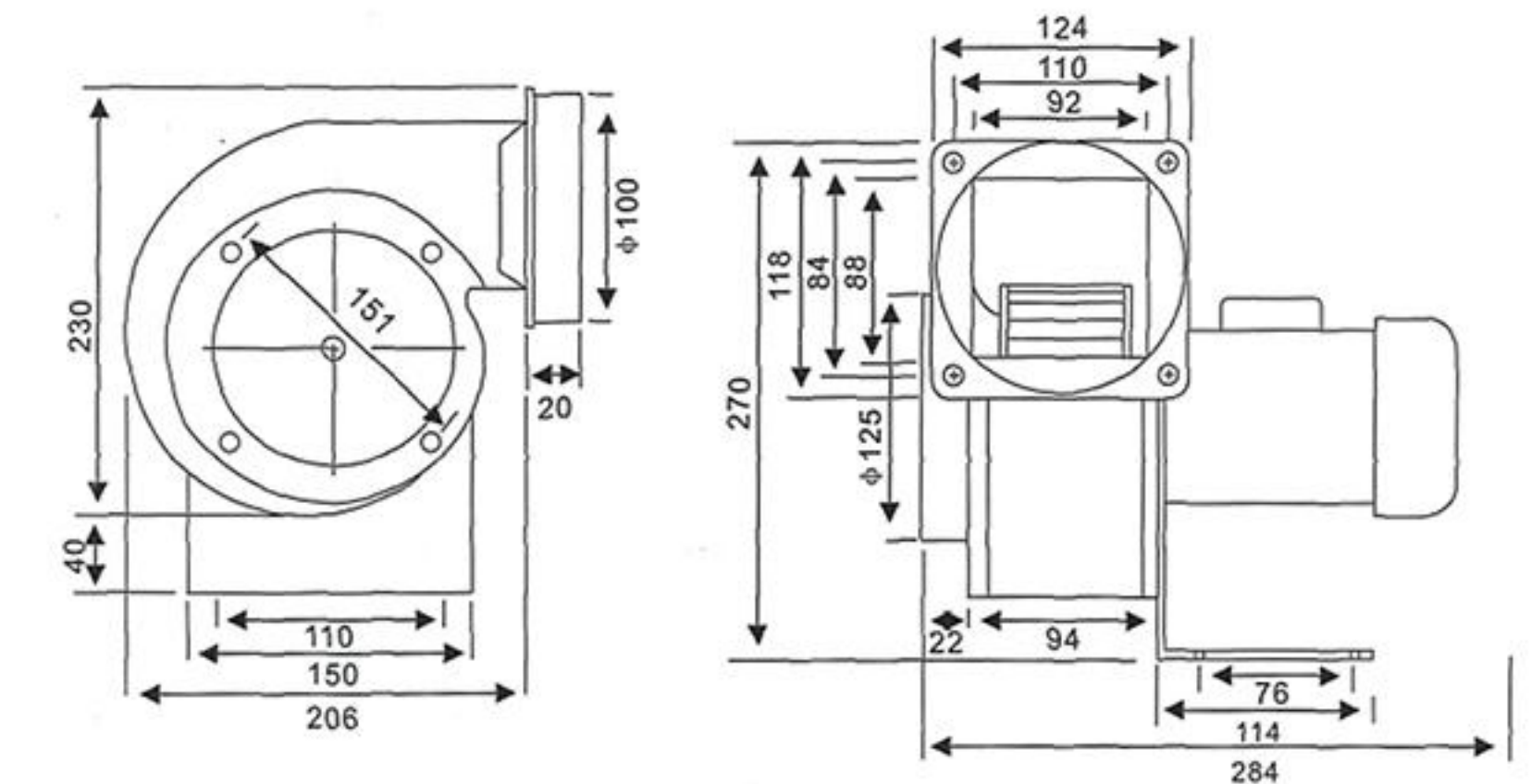
ORDINARY CENTRIFUGAL FAN

CY127



| Voltage (V) | Power (W) | Frequency (HZ) | Current (A) | Static Pressure (mmAq/RPM) | Air Volume (CMM/RPM) | Fan Direction | Noise (dB) |
|-------------|-----------|----------------|-------------|----------------------------|----------------------|---------------|------------|
| 110 | 50 | 60 | 0.85 | 44/3536 | 4.0/3220 | A or B | 48 |
| 220 | 50 | 50 | 0.4 | 30.5/2960 | 3.3/2960 | | 48 |

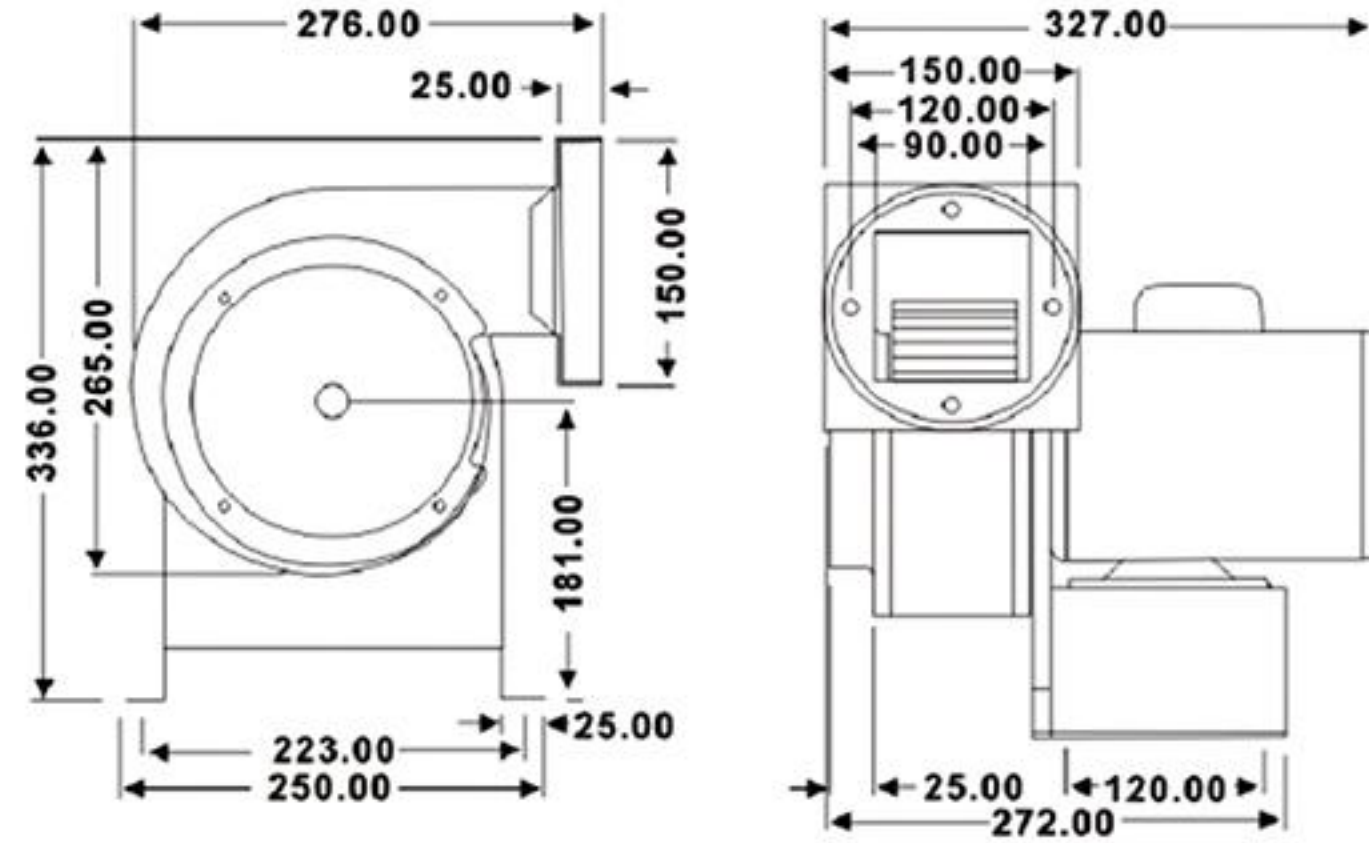
CY140



| Voltage (V) | Power (W) | Frequency (HZ) | Current (A) | Static Pressure (mmAq/RPM) | Air Volume (CMM/RPM) | Fan Direction | Noise (dB) |
|-------------|-----------|----------------|-------------|----------------------------|----------------------|---------------|------------|
| 220 | 250 | 60 | 1.3 | 60/3250 | 13.5/3250 | A or B | 52 |
| 380 | 250 | 50 | 0.6 | 53/2850 | 12.5/2850 | | 52 |

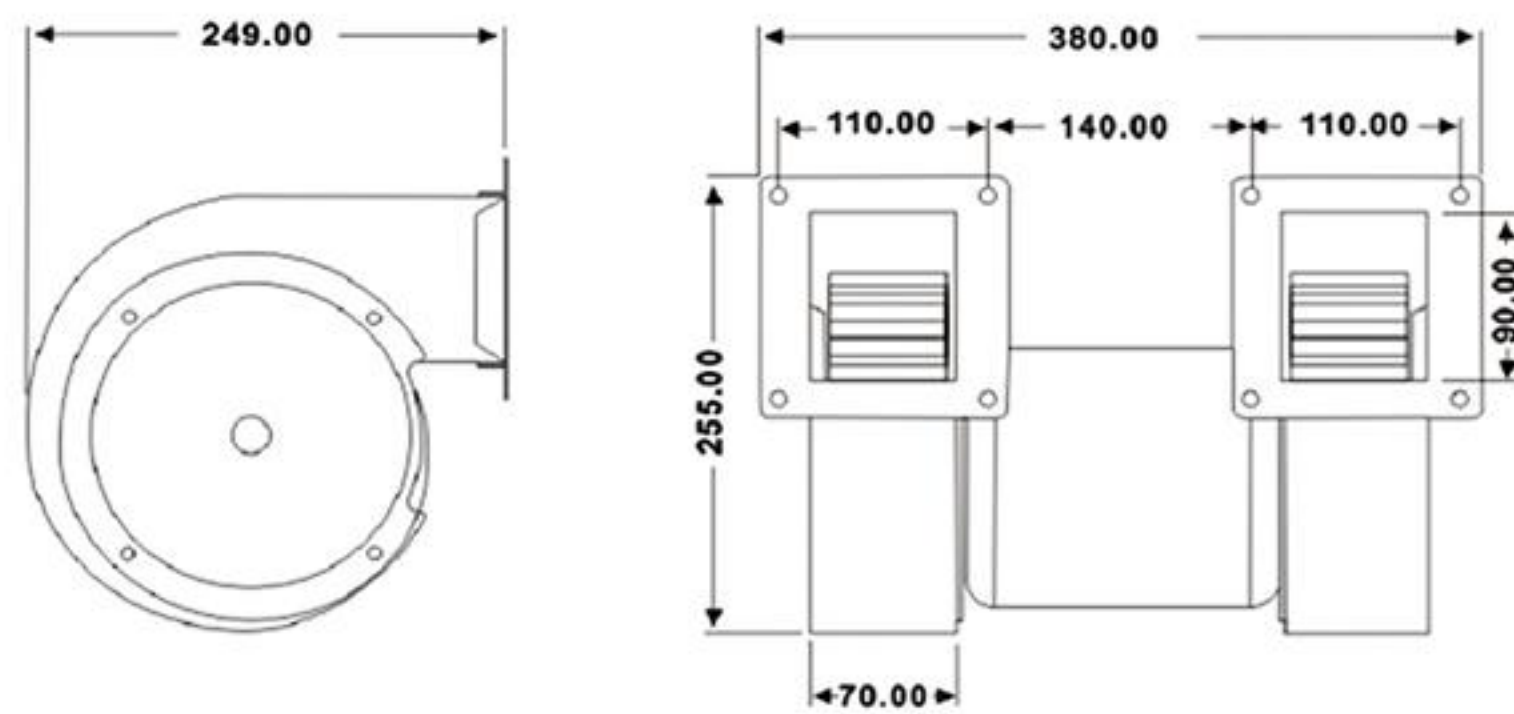
ORDINARY CENTRIFUGAL FAN

CY150



| Voltage (V) | Power (W) | Frequency (HZ) | Current (A) | Static Pressure (mmAq/RPM) | Air Volume (CMM/RPM) | Fan Direction | Noise (dB) |
|-------------|-----------|----------------|-------------|----------------------------|----------------------|---------------|------------|
| 220 | 370 | 50 | 1.8 | 58/2980 | 12.5/2930 | A or B | 56 |
| 380 | 370 | 50 | 1.0 | 58/2980 | 12.5/2930 | | 56 |

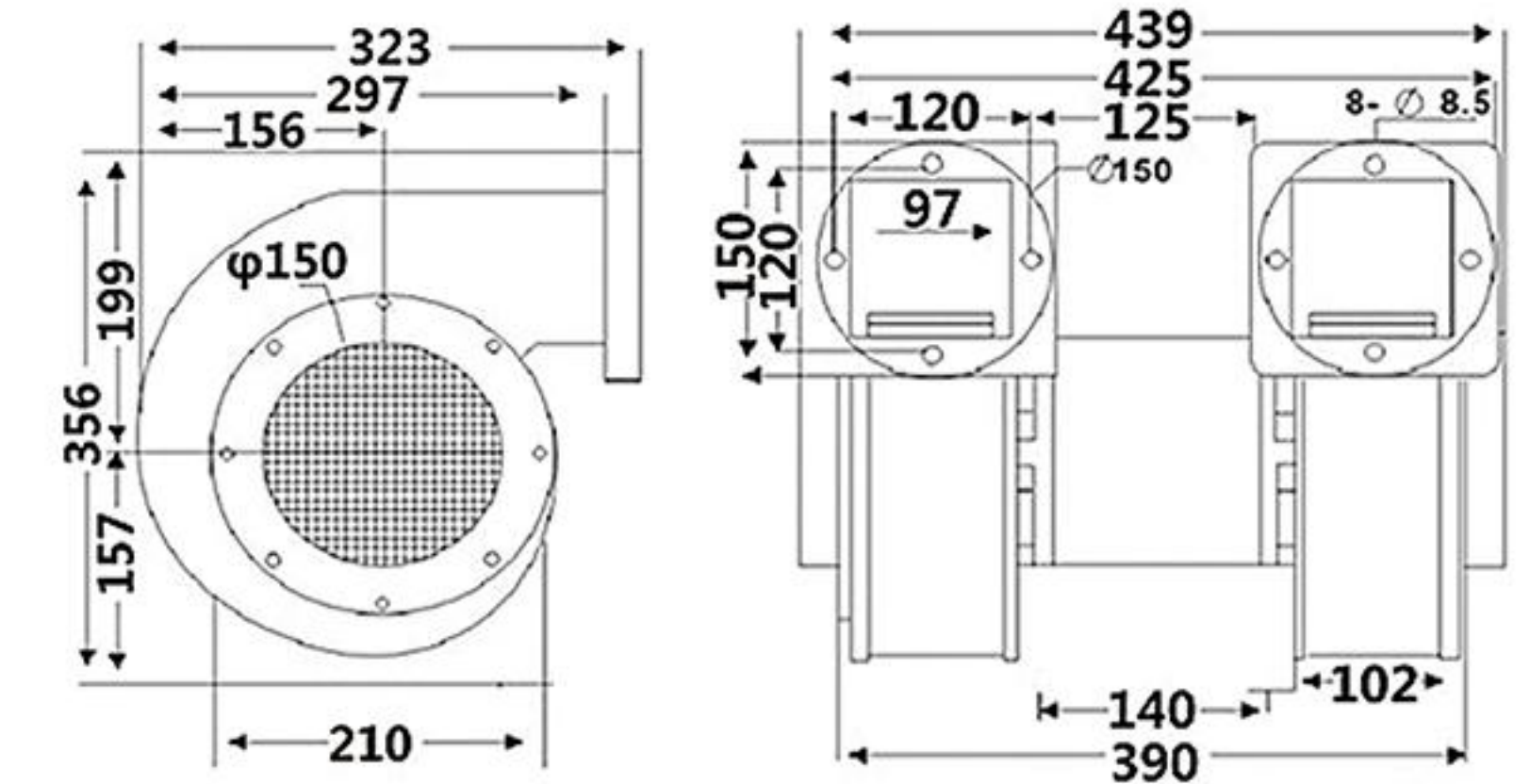
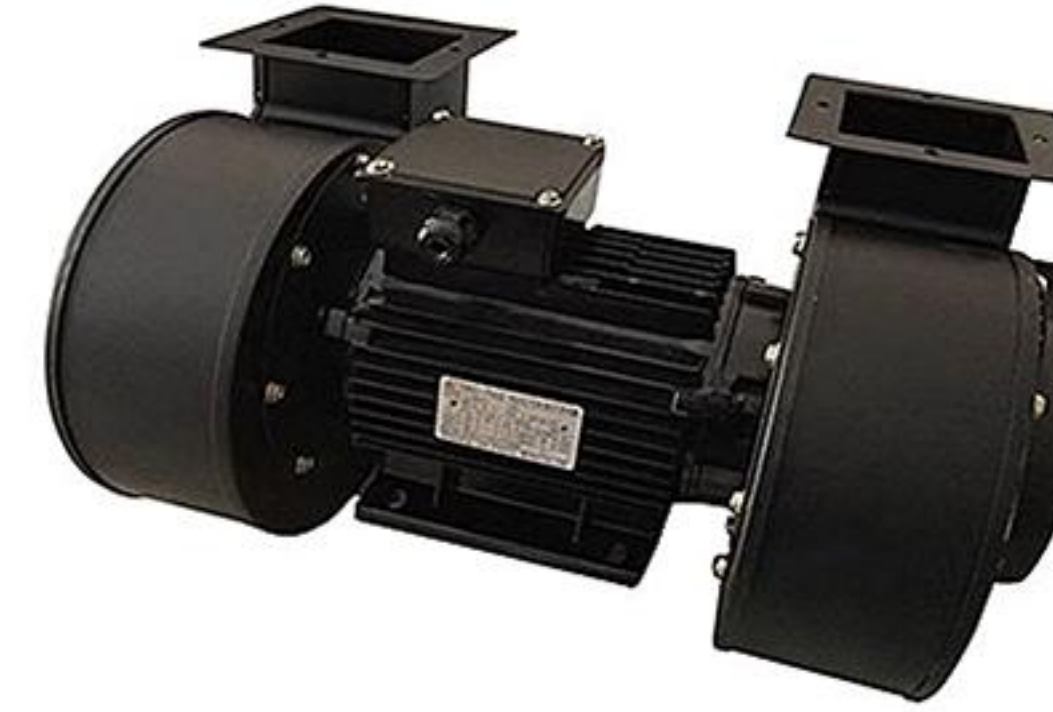
CY150M



| Voltage (V) | Power (W) | Frequency (HZ) | Current (A) | Static Pressure (mmAq/RPM) | Air Volume (CMM/RPM) | Fan Direction | Noise (dB) |
|-------------|-----------|----------------|-------------|----------------------------|----------------------|---------------|------------|
| 220 | 550 | 50 | 2.6 | 58/2980 | 12.5/2930 | A or B | 55 |
| 380 | 550 | 50 | 1.5 | 58/2980 | 12.5/2930 | | 55 |

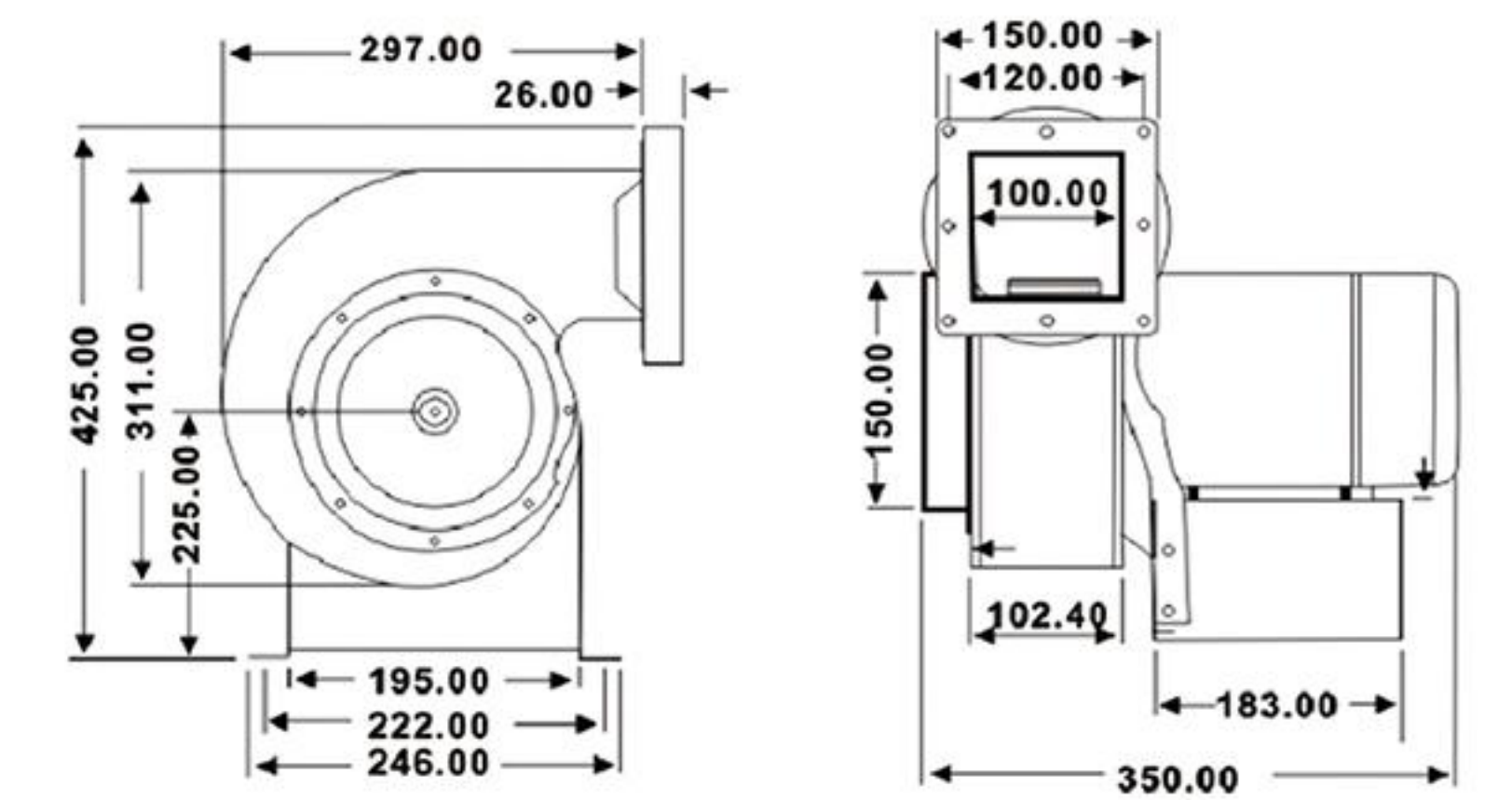
ORDINARY CENTRIFUGAL FAN

CY180M



| Voltage (V) | Power (W) | Frequency (HZ) | Current (A) | Static Pressure (mmAq/RPM) | Air Volume (CMM/RPM) | Fan Direction | Noise (dB) |
|-------------|-----------|----------------|-------------|----------------------------|----------------------|---------------|------------|
| 380 | 1500 | 50 | 3.5 | 143/2850 | 48.7/2850 | A or B | 941 |

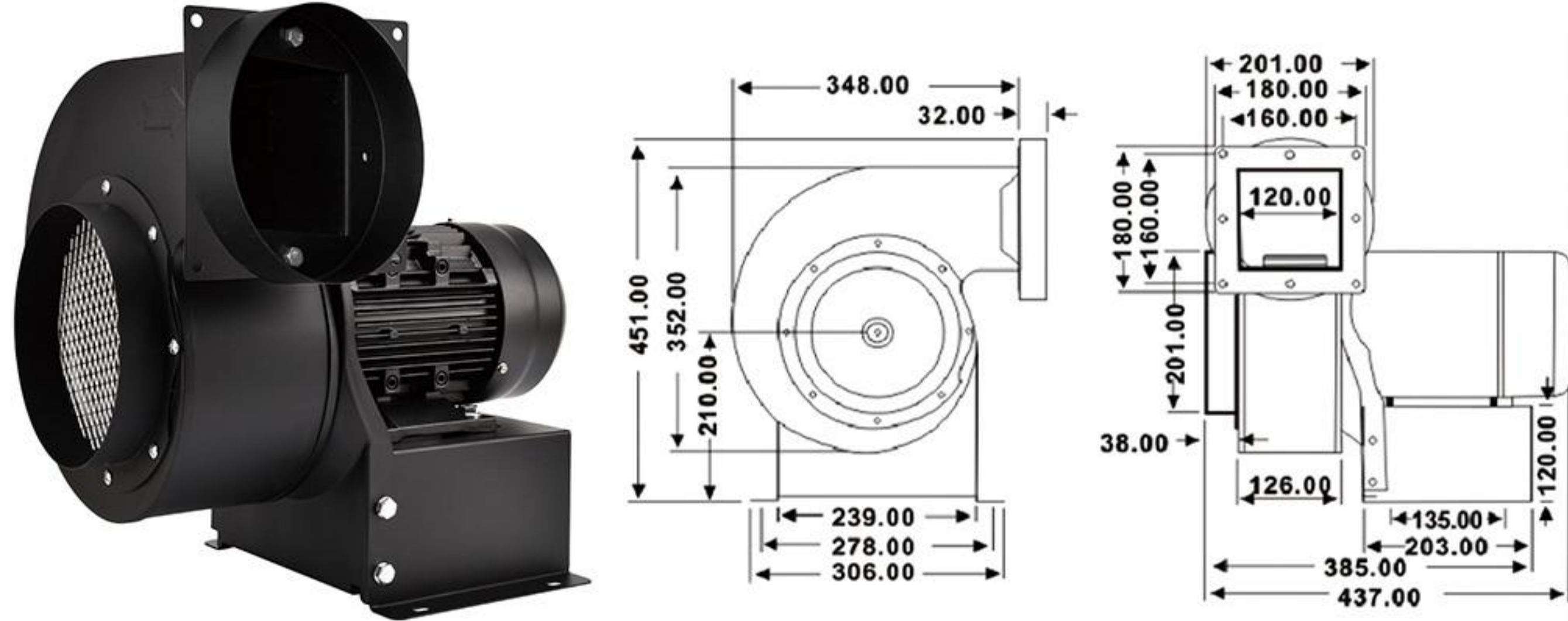
CY180



| Voltage (V) | Power (W) | Frequency (HZ) | Current (A) | Static Pressure (mmAq/RPM) | Air Volume (CMM/RPM) | Fan Direction | Noise (dB) |
|-------------|-----------|----------------|-------------|----------------------------|----------------------|---------------|------------|
| 220 | 550 | 50 | 2.6 | 58/2980 | 12.5/2930 | A or B | 55 |
| 380 | 550 | 50 | 1.5 | 58/2980 | 12.5/2930 | | 55 |

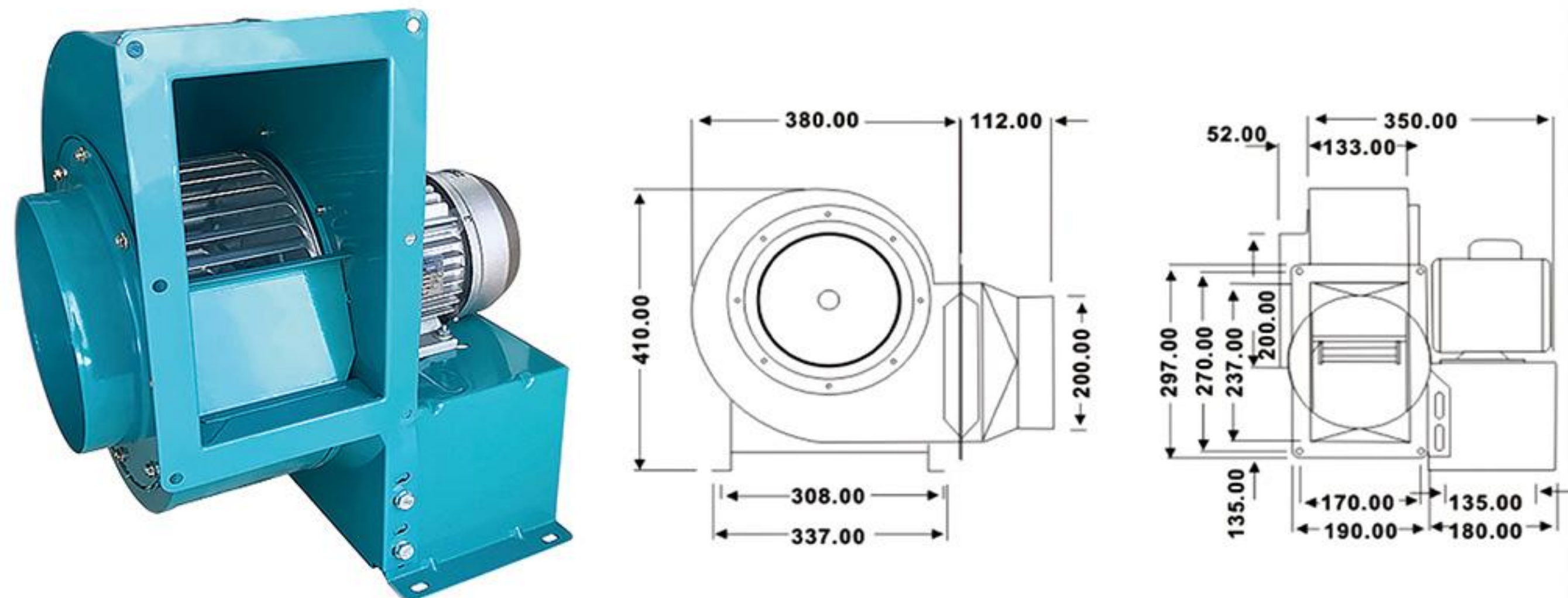
ORDINARY CENTRIFUGAL FAN

CY200



| Voltage (V) | Power (W) | Frequency (HZ) | Current (A) | Static Pressure (mmAq/RPM) | Air Volume (CMM/RPM) | Fan Direction | Noise (dB) |
|-------------|-----------|----------------|-------------|----------------------------|----------------------|---------------|------------|
| 220 | 1500 | 50 | 6.8 | 205/3540 | 46/3320 | A or B | 68 |
| 380 | 1500 | 50 | 3.95 | 145/2950 | 48/2820 | | 68 |

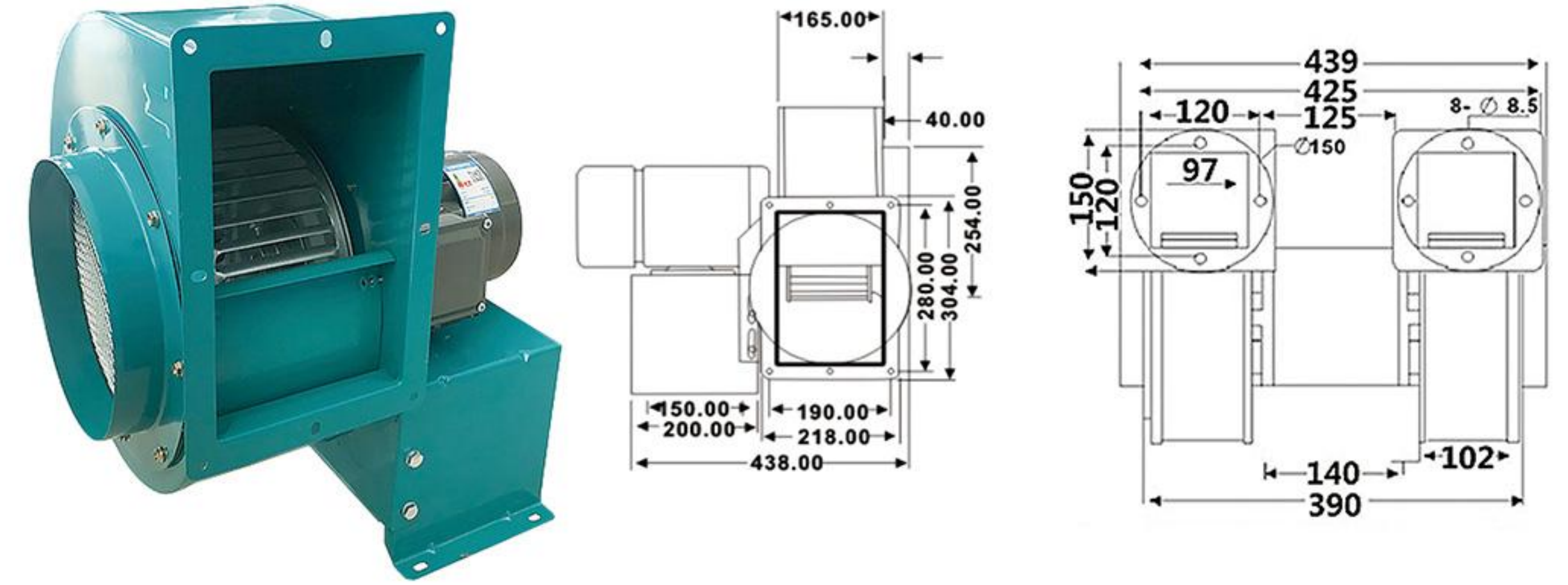
CY230P



| Voltage (V) | Power (W) | Frequency (HZ) | Current (A) | Static Pressure (mmAq/RPM) | Air Volume (CMM/RPM) | Fan Direction | Noise (dB) |
|-------------|-----------|----------------|-------------|----------------------------|----------------------|---------------|------------|
| 380 | 370 | 50 | 1.0 | 35/1492 | 21/1456 | A or B | 53 |

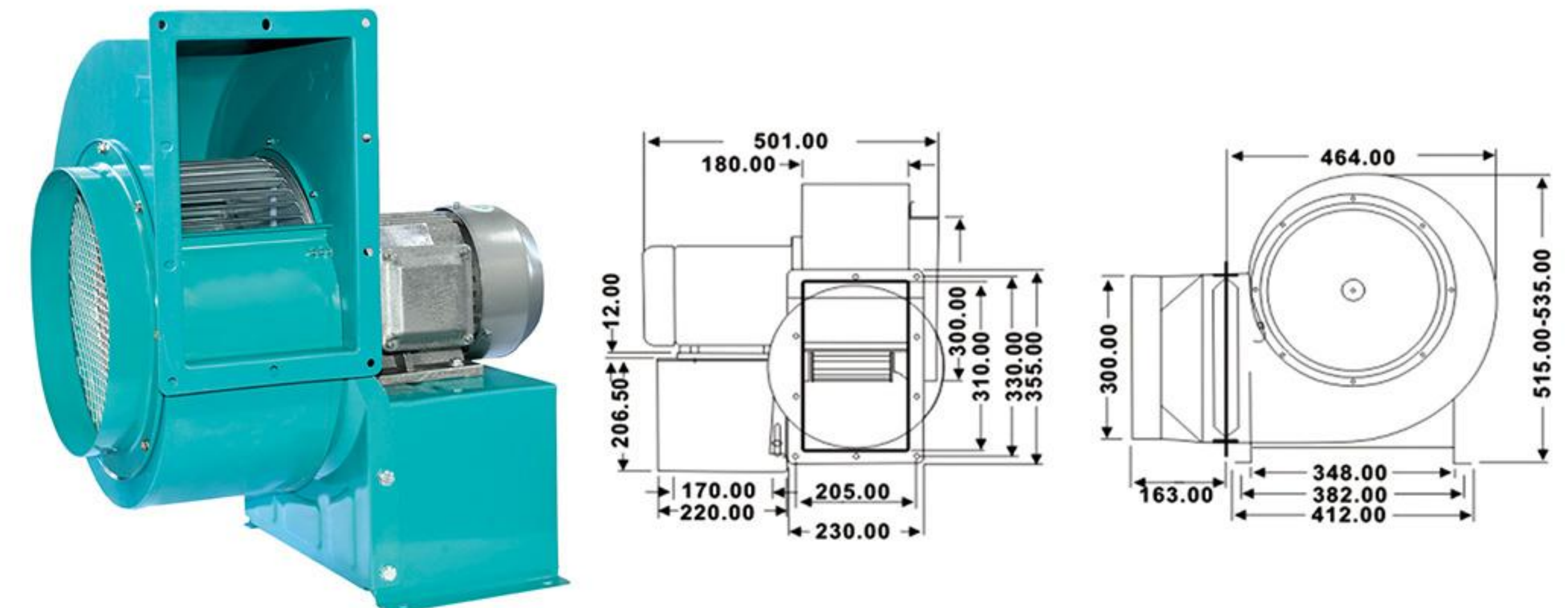
ORDINARY CENTRIFUGAL FAN

CY270P



| Voltage (V) | Power (W) | Frequency (HZ) | Current (A) | Static Pressure (mmAq/RPM) | Air Volume (CMM/RPM) | Fan Direction | Noise (dB) |
|-------------|-----------|----------------|-------------|----------------------------|----------------------|---------------|------------|
| 380 | 750 | 50 | 2.0 | 44/1435 | 40/1435 | A or B | 53 |

CY310P



| Voltage (V) | Power (W) | Frequency (HZ) | Current (A) | Static Pressure (mmAq/RPM) | Air Volume (CMM/RPM) | Fan Direction | Noise (dB) |
|-------------|-----------|----------------|-------------|----------------------------|----------------------|---------------|------------|
| 220 | 1500 | 50 | 3.95 | 73/1510 | 68.5/1460 | A or B | 60 |
| 380 | 2200 | 50 | 5.8 | 73/1510 | 68.5/1460 | | 60 |

CENTRIFUGAL FAN INSULATION PAYMENT

Insulation CY140



| Voltage (V) | Power (W) | Current (A) | Speed (Rpm) | Wind Pressure (Pa) | Air Volume (m ³ /Rpm) | Fan Direction | Noise (dB) |
|-------------|-----------|-------------|-------------|--------------------|----------------------------------|---------------|------------|
| 220 | 25 | 0.4/0.2 | 3530/2920 | 205/127 | 2.1/1.6 | A or B | 43 |

Insulation CY100



| Voltage (V) | Power (W) | Current (A) | Speed (Rpm) | Wind Pressure (Pa) | Air Volume (m ³ /Rpm) | Fan Direction | Noise (dB) |
|-------------|-----------|-------------|-------------|--------------------|----------------------------------|---------------|------------|
| 220 | 45 | 0.3 | 3350/2850 | 254/176 | 2.7/2.2 | A or B | 45 |

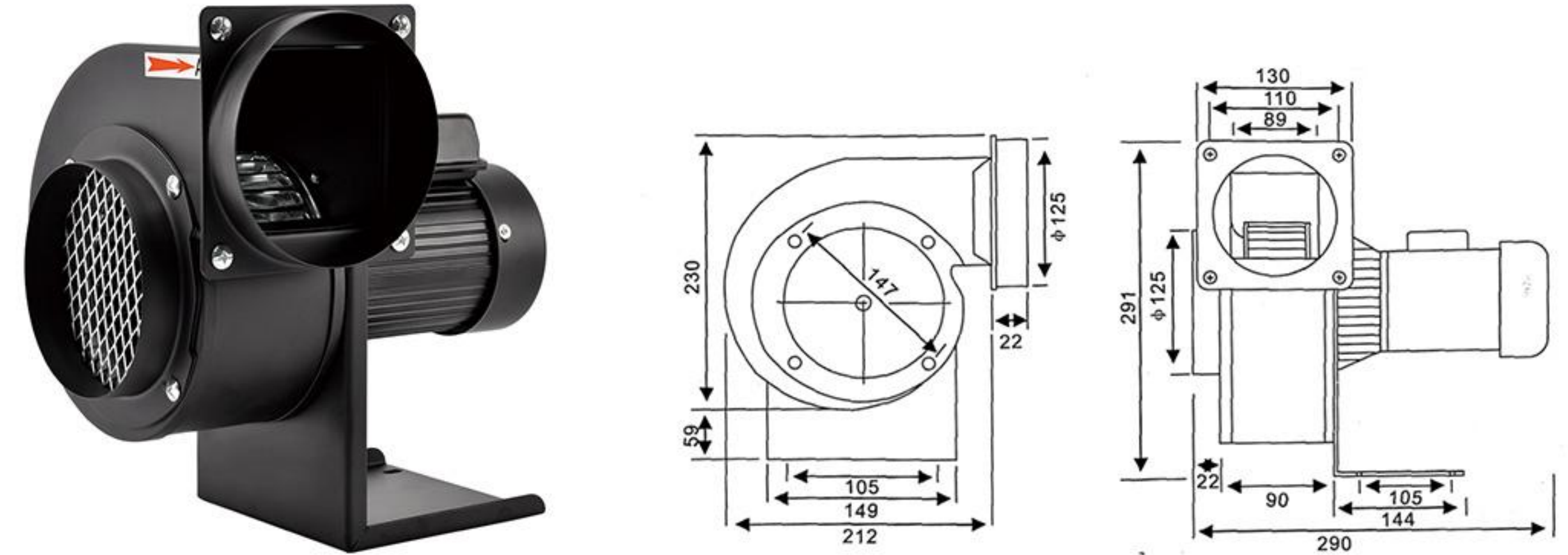
Insulation CY112



| Voltage (V) | Power (W) | Current (A) | Speed (Rpm) | Wind Pressure (Pa) | Air Volume (m ³ /Rpm) | Fan Direction | Noise (dB) |
|-------------|-----------|-------------|-------------|--------------------|----------------------------------|---------------|------------|
| 220 | 60 | 0.35 | 3540/2850 | 264/181 | 6.7/5.5 | A or B | 48 |

CENTRIFUGAL FAN INSULATION PAYMENT

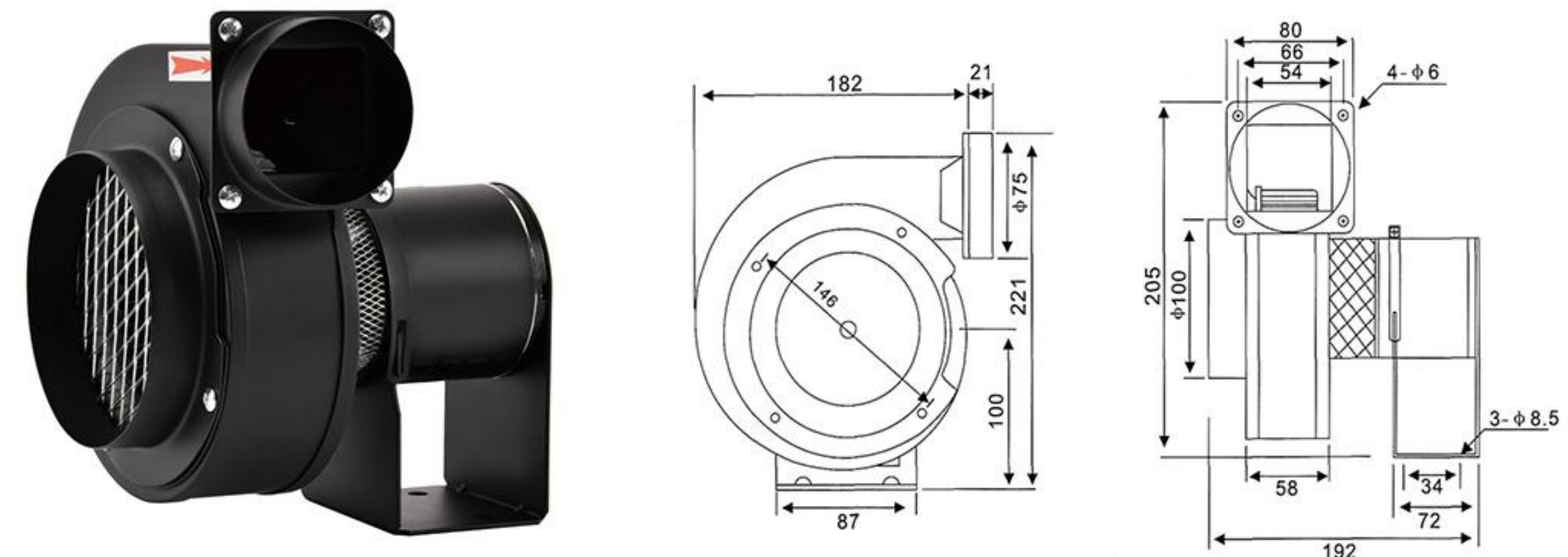
Insulation CY125



| Voltage (V) | Power (W) | Current (A) | Speed (Rpm) | Wind Pressure (Pa) | Air Volume (m ³ /Rpm) | Fan Direction | Noise (dB) |
|-------------|-----------|-------------|-------------|--------------------|----------------------------------|---------------|------------|
| 220 | 200 | 1.0 | 3350/2850 | 529/450 | 10.0/9.5 | A or B | 51 |

| Voltage (V) | Power (W) | Current (A) | Frequency (Hz) | Fan Direction | Static Pressure (mmAq/Pa) | Air Volume (m ³ /Rpm) | Noise (dB) |
|-------------|-----------|-------------|----------------|---------------|---------------------------|----------------------------------|------------|
| 380 | 200 | 0.45 | 50 | A or B | 46/2950 | 8.7/2800 | 51 |

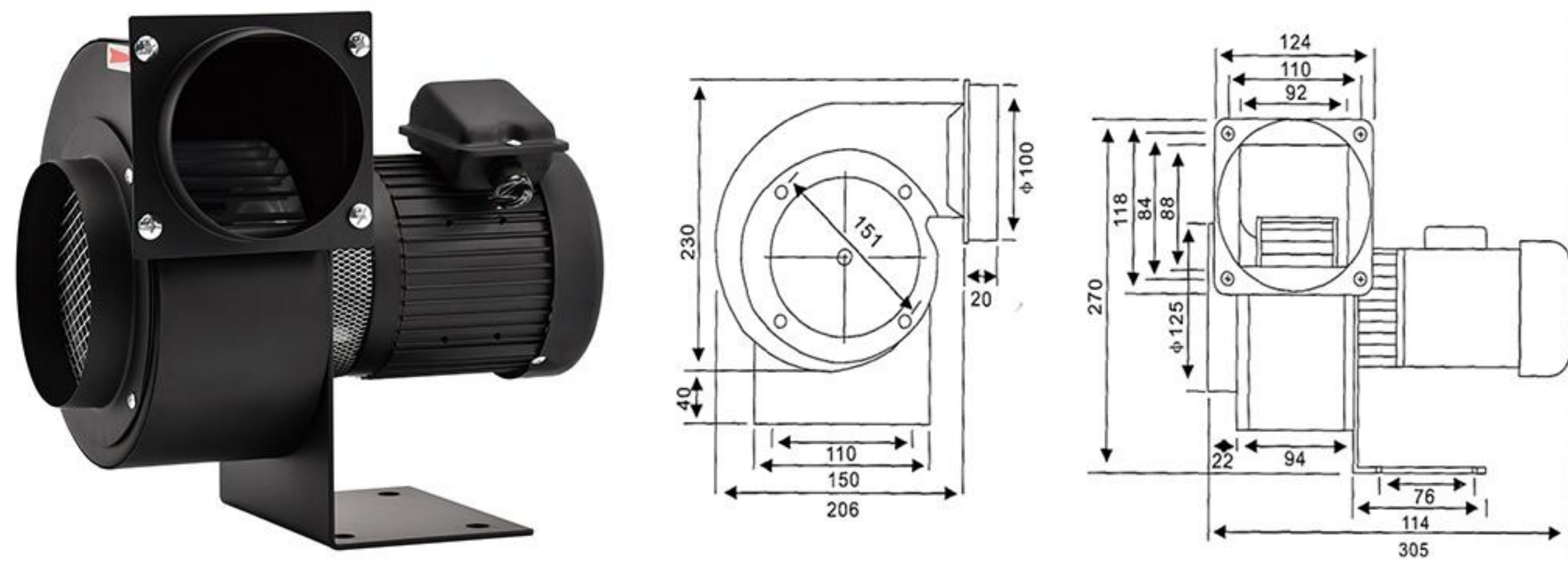
Insulation CY127



| Voltage (V) | Power (W) | Current (A) | Speed (Rpm) | Wind Pressure (Pa) | Air Volume (m ³ /Rpm) | Fan Direction | Noise (dB) |
|-------------|-----------|-------------|-------------|--------------------|----------------------------------|---------------|------------|
| 220 | 50 | 1.0 | 3350/2850 | 377/298 | 3.9/3.3 | A or B | 48 |

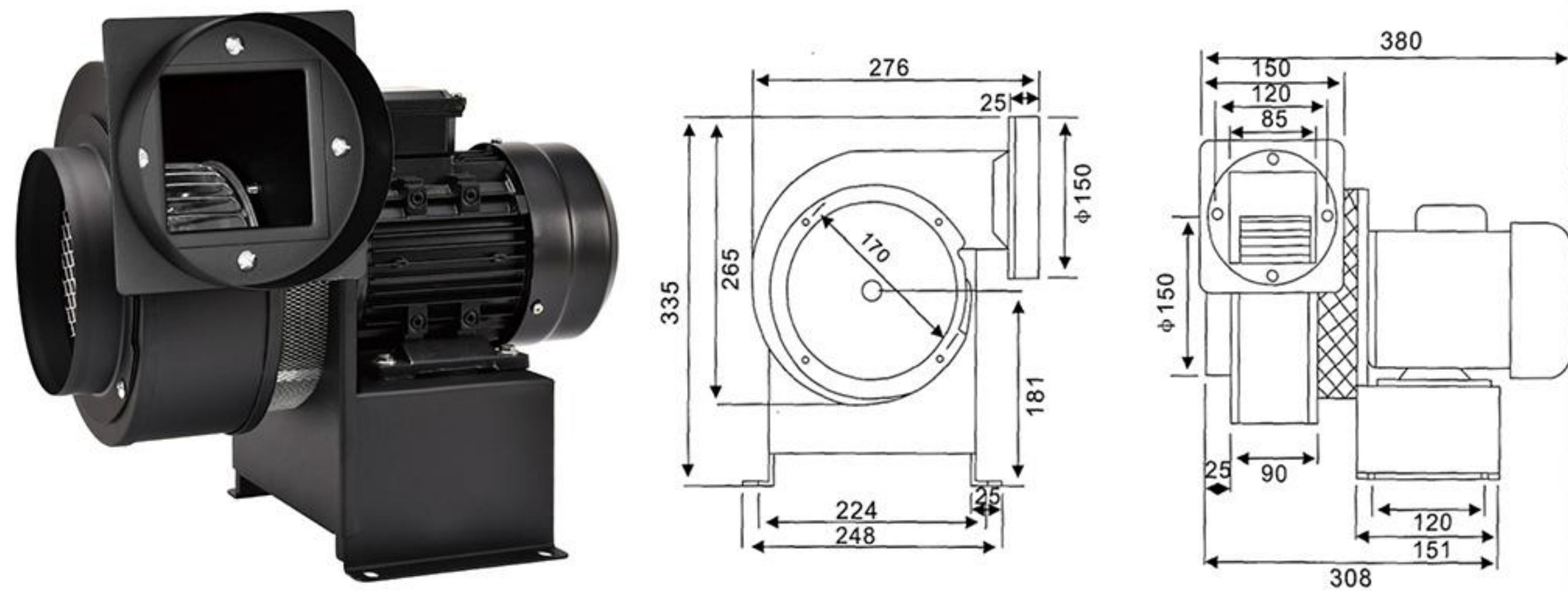
CENTRIFUGAL FAN INSULATION PAYMENT

Insulation CY140



| Voltage (V) | Power (W) | Current (A) | Speed (Rpm) | Wind Pressure (Pa) | Air Volume (m ³ /Rpm) | Fan Direction | Noise (dB) |
|-------------|-----------|-------------|-------------|--------------------|----------------------------------|---------------|------------|
| 220 | 250 | 1.2 | 2820 | 509 | 13 | A or B | 52 |

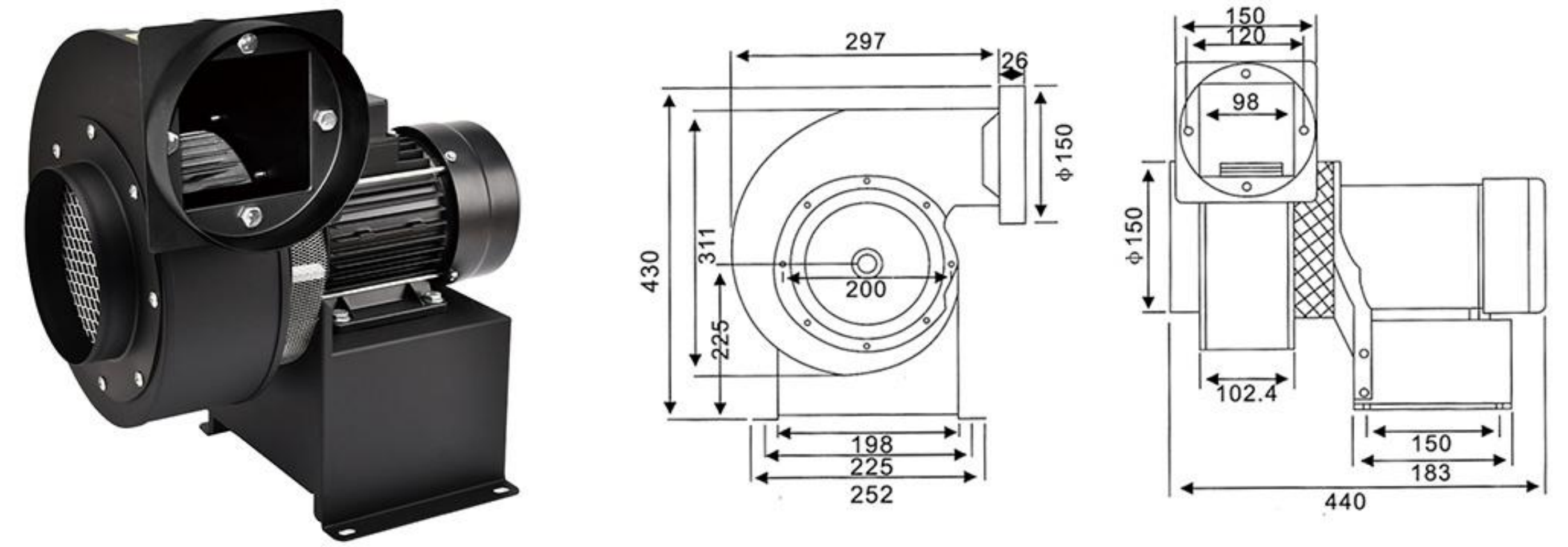
Insulation CY150



| Voltage (V) | Power (W) | Current (A) | Speed (Rpm) | Wind Pressure (Pa) | Air Volume (m ³ /Rpm) | Fan Direction | Noise (dB) |
|-------------|-----------|-------------|-------------|--------------------|----------------------------------|---------------|------------|
| 220 | 370 | 1.8 | 2980 | 568 | 17 | A or B | 55 |
| 380 | 370 | 1.0 | 2980 | 568 | 17 | | 55 |

CENTRIFUGAL FAN INSULATION PAYMENT

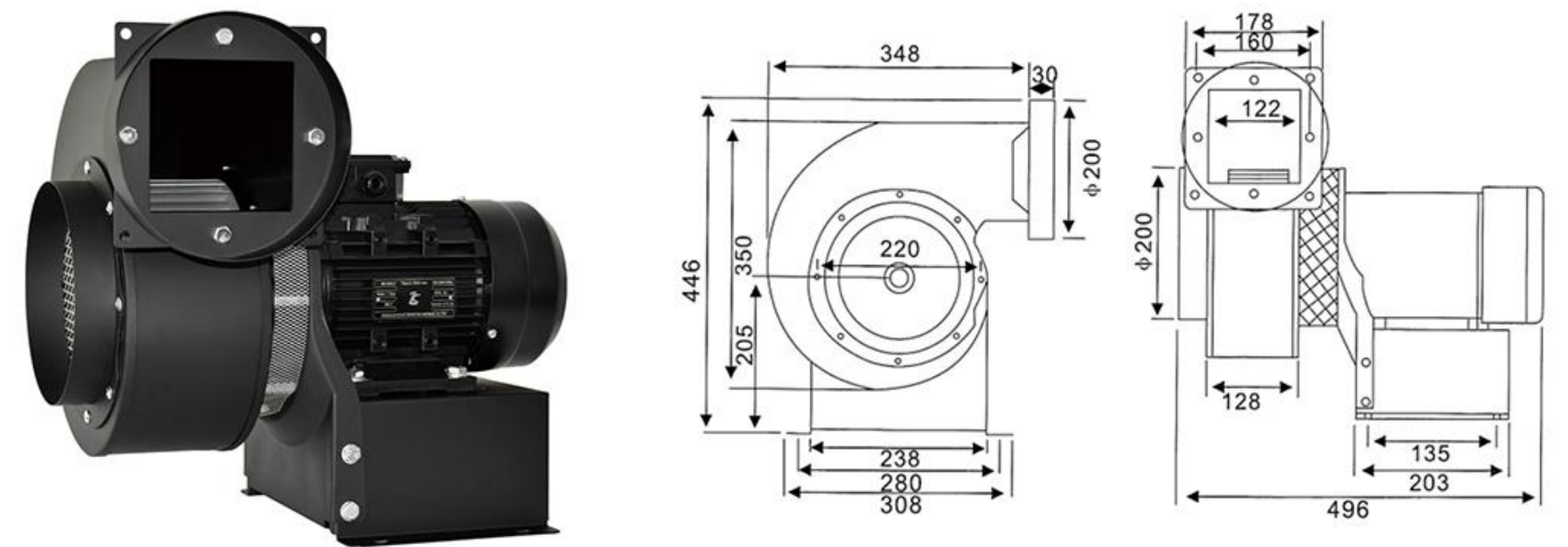
Insulation CY180



| Voltage (V) | Power (W) | Current (A) | Speed (Rpm) | Static Pressure (mmAq/Pa) | Air Volume (m ³ /Rpm) | Fan Direction | Noise (dB) |
|-------------|-----------|-------------|-------------|---------------------------|----------------------------------|---------------|------------|
| 220 | 250 | 5.2 | 2900 | 96/841 | 23 | A or B | 60 |

| Voltage (V) | Power (W) | Current (A) | Frequency (Hz) | Static Pressure (mmAq/Rpm) | Air Volume (m ³ /Rpm) | Fan Direction | Noise (dB) |
|-------------|-----------|-------------|----------------|----------------------------|----------------------------------|---------------|------------|
| 380 | 750 | 0.77 | 60 | 138/3460 | 27.1/3460 | A or B | 60 |

Insulation CY200



| Voltage (V) | Power (W) | Current (A) | Speed (Rpm) | Wind Pressure (Pa) | Air Volume (m ³ /Rpm) | Fan Direction | Noise (dB) |
|-------------|-----------|-------------|-------------|--------------------|----------------------------------|---------------|------------|
| 380 | 1500 | 3.0 | 3320/2820 | 2009/1421 | 46 | A or B | 68 |

DF SERIES CENTRIFUGAL FAN

The shell of DF centrifugal fan is treated by high-temperature spraying after precision mold stamping and molding, Beautiful appearance, stable performance, reasonable structure and easy maintenance. After the dynamic and static balance test, the wind wheel inside the fan has the advantages of stable operation, large air volume, high wind pressure, low vibration and low noise. This series of DF are widely used in plastic machinery, printing machinery, packaging machinery, purification instruments, boiler blasting, film blowing, drying, cooling and other fields.

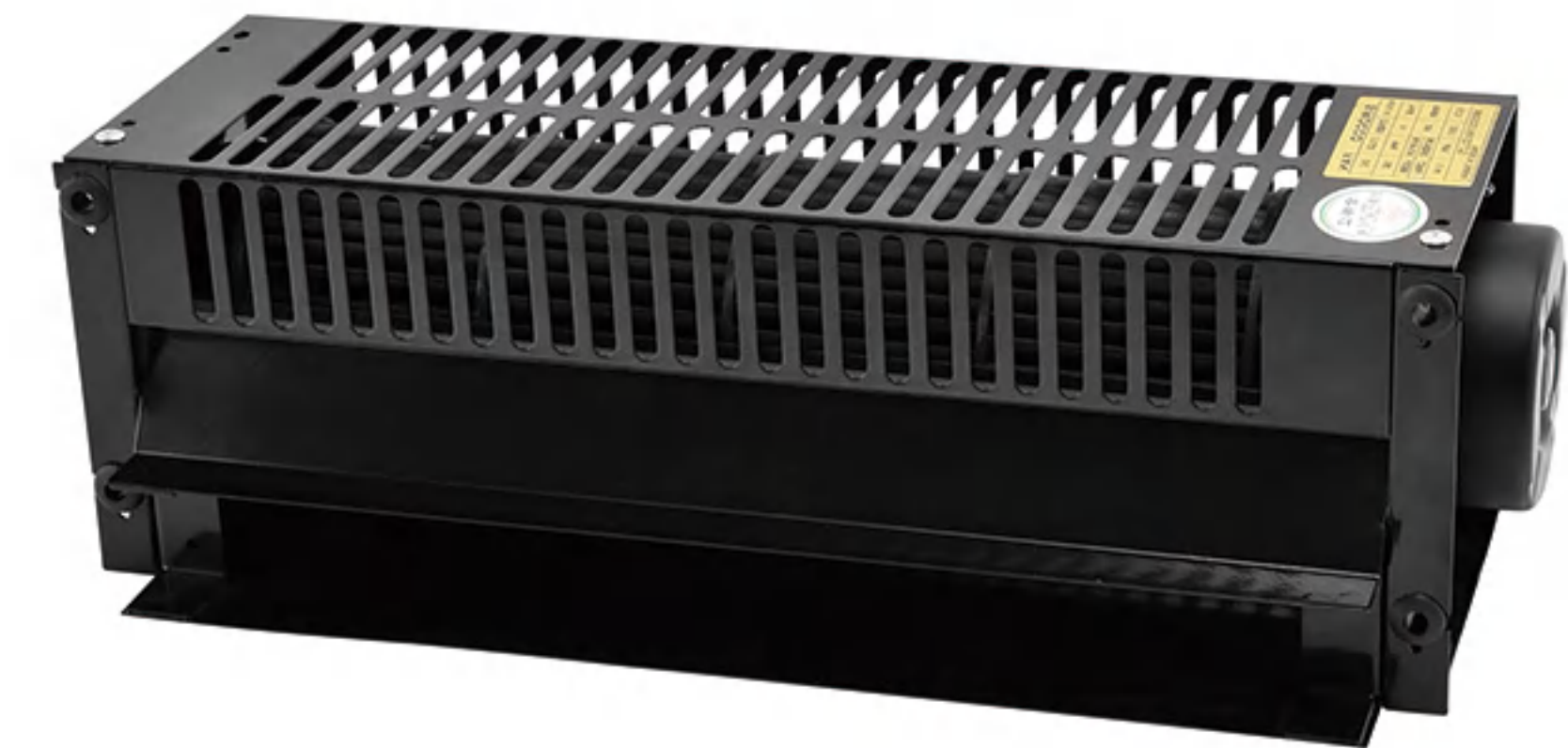


TECHNICAL PARAMETERS OF DF SERIES CENTRIFUGAL FAN

| Model | Voltage (V) | Frequency (Hz) | Power (W) | Speed (Rpm) | Total Pressure (Pa) | Air Volume (M ³ /h) | Phase | Current (A) | Noise db(A) |
|--------|-------------|----------------|-----------|-------------|---------------------|--------------------------------|-------|-------------|-------------|
| DF-90 | 220 | 50 | 90 | 2800 | 290 | 265 | 1 | 0.33 | <68 |
| DF-120 | 380 | 50 | 120 | 2820 | 410 | 545 | 3 | 0.32 | <72 |
| DF-180 | 380 | 50 | 180 | 2820 | 450 | 580 | 3 | 0.39 | <72 |
| DF-250 | 380 | 50 | 250 | 2820 | 490 | 620 | 3 | 0.58 | <74 |
| DF-370 | 380 | 50 | 370 | 2820 | 630 | 860 | 3 | 0.98 | <76 |
| DF-550 | 380 | 50 | 550 | 2800 | 860 | 900 | 3 | 2.3 | <78 |
| DF-750 | 380 | 50 | 750 | 2800 | 1010 | 1090 | 3 | 2.4 | <80 |

CYF CROSS FLOW FAN

The CYF cross-flow fan is mainly composed of three parts: impeller, air duct and motor. Its shell is stamped and formed by precision molds and then sprayed at high temperature, and beautiful appearance, stable performance. The impeller is not only resistant to high temperatures, but also can maintain stable operation for a long time without deformation. The air duct casing adopts a streamlined design, which can effectively reduce the loss of airflow and greatly improve the efficiency of the fan.



TECHNICAL PARAMETERS OF CYF CROSS FLOW FAN

| Model | Voltage (V) | Power (Hz) | Current (A) | Speed (Rpm) | Wind Pressure (M ³ /h) | Air Volume (A) | Fan Direction |
|----------|-------------|------------|-------------|-------------|-----------------------------------|----------------|---------------|
| CYF06024 | 220 | 25 | 0.5/0.3 | 3280/2860 | 98/73.5 | 6.5/5.5 | A or B |
| CYF06031 | 220/240 | 25 | 0.3/0.2 | 3380/2860 | 98/73.5 | 6.5/5.5 | |
| CYF06037 | 220/240 | 45 | 0.41/0.3 | 3150/2650 | 63.7/50 | 6.5/4.7 | |
| CYF06043 | 220/240 | 45 | 0.58/0.35 | 3350/2850 | 127/78 | 7.8/6.8 | |
| CYF9029 | 220/230 | 33 | 0.14 | 1350 | 21 | 4.5 | |
| CYF9060 | 220 | 130 | 0.8 | 2650 | -- | 24.5 | |

| Model | Voltage (v) | Power (w) | Current (A) | Speed (Rpm) | Max Pressure (mmH ₂ O) | Air Volume (A) | Fan Direction |
|---------|-------------|-----------|-------------|-------------|-----------------------------------|----------------|---------------|
| CYF9439 | 120 | 43 | 0.40 | 1400 | 3.5 | 7.5 | A |
| | | 50 | 0.40 | 1600 | 4.5 | 9.0 | |
| | 230 | 43 | 0.20 | 1400 | 3.5 | 7.5 | |
| | | 50 | 0.22 | 1600 | 4.5 | 9.0 | |
| CYF9446 | 120 | 43 | 0.40 | 1350 | 3.5 | 8.5 | A |
| | | 50 | 0.42 | 1550 | 5.0 | 10.0 | |
| | 230 | 43 | 0.20 | 1350 | 3.5 | 8.5 | |
| | | 50 | 0.23 | 1550 | 5.0 | 10.0 | |

LONG AXIS MOTOR REGULAR VERSION

| | | | | | | | | | | | | | | |
|---------------------|-----------|--------|--------|--------|---------|---------|------|------|------|------|------|------|------|------|
| Product | | | | | | | | | | | | | | |
| | Parameter | | | | | | | | | | | | | |
| Model | KL-40 | KL-45 | KL-60 | KL-90 | KL-90 | KL-120 | | | | | | | | |
| Power (w) | 40 | 45 | 60 | 90 | 90 | 120 | | | | | | | | |
| Axial Length (mm) | 128 | 130 | 130 | 170 | 150 | 170 | | | | | | | | |
| Shaft Diameter (mm) | 8/9.6 | 8 | 8 | 12.7 | 11/14.7 | 12.7 | | | | | | | | |
| Size (mm) | 265*100 | 223*85 | 223*85 | 300*95 | 335*111 | 309*100 | | | | | | | | |
| Voltage (V) | 220 | 220 | 380 | 220 | 220 | 380 | 220 | 220 | 380 | | | | | |
| Speed (R/min) | 2800 | 1400 | 2800 | 1400 | 2800 | 1400 | 2800 | 1400 | 2800 | 2800 | 1400 | 2800 | 1400 | 2800 |

| | | | | | | | | | | | | | | |
|---------------------|-----------|---------|---------|---------|---------|---------|---------|------|------|------|------|------|------|------|
| Product | | | | | | | | | | | | | | |
| | Parameter | | | | | | | | | | | | | |
| Model | KL-180 | KL-370 | KL-750 | KL-1100 | KL-1500 | KL-2200 | YC-120 | | | | | | | |
| Power (w) | 180 | 370 | 750 | 1100 | 1500 | 2200 | 120 | | | | | | | |
| Axial Length (mm) | 150 | 180 | 180 | 180 | 180 | 180 | 78 | | | | | | | |
| Shaft Diameter (mm) | 11/14.7 | 14 | 19 | 24 | 24 | 28 | M5/8 | | | | | | | |
| Size (mm) | 335*111 | 400*138 | 430*155 | 445*166 | 470*166 | 500*195 | 150*153 | | | | | | | |
| Voltage (V) | 220 | 220 | 380 | 220 | 380 | 380 | 380 | 380 | 380 | 220 | | | | |
| Speed (R/min) | 2800 | 1400 | 2800 | 1400 | 2800 | 1400 | 2800 | 1400 | 2800 | 1400 | 1400 | 2800 | 1400 | 2800 |

LONG AXIS MOTOR INSULATION

| | | | | | | | | | | | | |
|---------------------|-----------|---------|---------|---------|------|------|------|------|------|------|------|--|
| Product | | | | | | | | | | | | |
| | Parameter | | | | | | | | | | | |
| Model | KL-370 | KL-750 | KL-1100 | KL-1500 | | | | | | | | |
| Power (w) | 370 | 750 | 1100 | 1500 | | | | | | | | |
| Axial Length (mm) | 180 | 180 | 180 | 180 | | | | | | | | |
| Shaft Diameter (mm) | 14 | 19 | 24 | 24 | | | | | | | | |
| Size (mm) | 414*138 | 442*155 | 462*166 | 487*166 | | | | | | | | |
| Voltage (V) | 220 | 380 | 220 | 380 | 380 | 380 | | | | | | |
| Speed (R/min) | 1400 | 2800 | 1400 | 2800 | 1400 | 2800 | 1400 | 2800 | 1400 | 1400 | 2800 | |

LONG AXIS MOTOR EXPLOSION-PROOF VERSION

| | | | |
|---------------------|-----------|---------|---------|
| Product | | | |
| | Parameter | | |
| Model | KL-370 | KL-750 | KL-1500 |
| Power (w) | 370 | 750 | 1500 |
| Axial Length (mm) | 185 | 185 | 185 |
| Shaft Diameter (mm) | 14 | 19 | 24 |
| Size (mm) | 425*210 | 480*240 | 520*240 |
| Voltage (V) | 380 | 380 | 380 |
| Speed (R/min) | 1380 | 1400 | 1400 |

STAINLESS STEEL WIND TURBINE (BLADE)

| Model | Dia. (mm) | Hight (mm) | Aperture (mm) | Wind Direction | Mounting Type | Blade q'ty (pc) |
|----------------|-----------|------------|---------------|----------------|---------------|------------------|
| 4Cun | 96 | 48 | 8 | A or B | Screw | 27 |
| 5Cun | 128 | 65 | 11 | A or B | Screw | 28 |
| | 128 | 65 | 12.7 | | | 28 |
| | 128 | 76 | 11 | | | 29 |
| | 128 | 76 | 12.7 | | | 29 |
| 6Cun | 156 | 65 | 12.7 | A or B | Screw | 34 |
| | 156 | 65 | 14 | | | 34 |
| | 156 | 76 | 12.7 | | | 37 |
| | 156 | 76 | 14 | | | 37 |
| 7Cun | 175 | 65 | 14 | A or B | Screw | 40 |
| | 175 | 65 | 19 | | Screw/Keyway | 39 |
| | 175 | 76 | 14 | | Screw | 40 |
| | 175 | 76 | 19 | | Screw/Keyway | 40 |
| 7.5Cun | 195 | 97 | 14 | A or B | Screw | 37 |
| | 195 | 97 | 14 | | Screw/Keyway | 37 |
| 8Cun | 202 | 97 | 14 | A or B | Screw | 38 |
| | 202 | 97 | 19 | | Screw/Keyway | 38 |
| 9Cun | 228 | 116 | 14 | A or B | Screw | 37 |
| | 228 | 116 | 19 | | Screw/Keyway | 37 |
| 10Cun | 250 | 110 | 19 | A or B | Screw/Keyway | 40 |
| | 250 | 110 | 24 | | Screw/Keyway | 40 |
| 10.5Cun | 265 | 135 | 14 | A or B | Screw | 40 |
| | 265 | 135 | 19 | | Screw/Keyway | 40 |
| | 265 | 135 | 24 | | Screw/Keyway | 40 |
| | 270 | 135 | 24 | | -- | -- |
| 12Cun | 306 | 155 | 19 | A or B | Screw/Keyway | 45 |
| | 306 | 155 | 24 | | Screw/Keyway | 45 |
| | 306 | 115 | 24 | | Screw/Keyway | -- |
| Three Leaf Fan | 150 | -- | 8 | -- | -- | -- |
| Five Leaf Fan | 245 | -- | 12.7 | -- | -- | -- |



GALVANIZED SHEET WIND TURBINE (BLADE)



| Model | Dia. (mm) | Hight (mm) | Aperture (mm) | Wind Direction | Mounting Type | Blade q'ty (pc) |
|-----------------------|-----------|------------|---------------|----------------|---------------|------------------|
| 3" (Rolled Edge) | 85 | 38 | 8 | A or B | Screw | 21 |
| 4" (Rolled Edge) | 96 | 48 | 8 | A or B | Screw | 27 |
| 5" (Rolled Edge) | 130 | 55 | 8 | A or B | Screw | 29 |
| | 130 | 55 | 10 | | | 29 |
| | 130 | 65 | 11 | | | 29 |
| | 130 | 65 | 12.7 | | Screw | 39 |
| 6" (Rolled Edge) | 156 | 56 | 12.7 | A or B | Screw | 36 |
| | 156 | 56 | 14 | | | 35 |
| | 156 | 76 | 11 | | | 36 |
| | 156 | 76 | 12.7 | | | 36 |
| | 156 | 76 | 14 | | | 36 |
| | 156 | 100 | 14 | | | 30 |
| 7" (Rolled Edge) | 175 | 76 | 14 | A or B | Screw/Keyway | 40 |
| 7.5" (Rolled Edge) | 190 | 98 | 14 | A or B | Screw | 36 |
| | 190 | 98 | 19 | | Screw/Keyway | 36 |
| | 195 | 97 | 14 | | -- | -- |
| 8" (Rolled Edge) | 202 | 97 | 14 | A or B | Screw/Keyway | 38 |
| 8.5" (Rolled Edge) | 210 | 76 | 14 | A or B | Screw | 47 |
| | 210 | 98 | 14 | | | 38 |
| 9" (Rolled Edge) | 230 | 115 | 14 | A or B | Screw | 37 |
| | 230 | 115 | 19 | | Screw/Keyway | 37 |
| 10" (Rolled Edge) | 250 | 110 | 19 | A or B | Screw/Keyway | 40 |
| | 250 | 110 | 24 | | | 40 |
| 10.5" (Rolled Edge) | 270 | 135 | 19 | A or B | Screw/Keyway | 40 |
| | 306 | 115 | 24 | | | 50 |
| 12" (Rolled Edge) | 306 | 155 | 24 | A or B | Screw/Keyway | 45 |
| | 306 | 155 | 24 | | | 45 |
| 12" (Reinforcing Rib) | 306 | 155 | 24 | A or B | -- | -- |
| 4" (Insert Blade) | 100 | 42 | 6 | A or B | Screw | 30 |
| 5" (Insert Blade) | 138 | 72 | 14 | A or B | Screw | 32 |
| 7" (Insert Blade) | 177 | 76 | 14 | A or B | Screw | 36 |
| 7.5" (Insert Blade) | 190 | 95 | 19 | A or B | Screw | 36 |
| 8" (Insert Blade) | 200 | 95 | 24 | A or B | Screw/Keyway | 40 |
| 10" (Insert Blade) | 255 | 105 | 19 | A or B | Screw/Keyway | 32 |
| 14" (Reinforcing Rib) | 350 | 170 | 28 | A or B | Screw/Keyway | 31 |
| Three Leaf Fan | 150 | -- | 8 | -- | -- | -- |
| Five Leaf Fan | 245 | -- | 12.7 | -- | -- | -- |
| | 245 | -- | 14 | -- | -- | -- |
| Six Leaf Fan | 400 | -- | 14 | -- | -- | -- |
| | 450 | -- | 19 | -- | -- | -- |