

专业·服务·研发·创新
PROFESSIONAL SERVICE R&D INNOVATION



PRODUCT BROCHURE

AIR TANK | DEFOAMING BUCKET



总部办公室地址：江苏省昆山市巴城镇红杨路725号浩义泰产业园
Add : Haoyitai Industrial Park, No.725, Hongyang Road, Kunshan, Jiangsu Province
客户专线【Hotline】：0512-88820290
联系人/Attn.：李娜 / Lina (+86 13382516956)
国内网址【Domestic website】： <http://www.ycchuqiguan.com>
国际官网【International websites】： <https://www.youchengzhixin.com>



江苏佑诚至信机电设备有限公司
Jiangsu Youcheng Zhixin Electromechanical Equipment Co., Ltd

FOCUSED ON THE
ELECTROMECHANICAL
EQUIPMENT FOR
OVER 20 YEARS

PROVIDING
HIGH-QUALITY
PRODUCTS AND
SERVICES TO
GLOBAL AUTOMATION
EQUIPMENT
ENTERPRISES
UNDER THE NAME OF
YOUCHENGZHIXING

PRODUCT CATALOG

01 ABOUT US

P01-P02

Enterprise Introduction

02 AIR STORAGE TANK SERIES

P03-P26

Carbon Steel Air Atorage Tank

P27-P33

Stainless Steel Mirror Air Storage Tank

P34-P36

Matte Stainless Steel Air Storage Tank

P37-P38

Shenjiang Air Storage Tank

P39-P40

Aluminum Alloy Air Storage Tank

03 BOOSTER VALVE/TANK SERIES

P19-P21

Booster Valve

P22

Booster Tank

04 DEFOAMING BUCKET SERIES

P41-P42

Stainless Steel Defoaming Bucket

P43

Stainless Steel Pressure Bucket

P44-P48

Transparent Lid Defoaming Bucket

ABOUT US

2013

ESTABLISHED IN 2013 AS
A WELL-KNOWN
DOMESTIC BRAND

10

FOR 10 CONSECUTIVE YEARS IN THE DOMESTIC AND
INTERNATIONAL INDUSTRY, SALES HAVE WON A HIGH REPUTATION
IN THE MARKET



BRAND MISSION

Providing high-quality products
and services to global automation
equipment enterprises under the
name of YOUCHENGZHIXING



BRAND VISION

Creating high-quality brands
creating first-class enterprises



CORE VALUES

Customer priority
People oriented
Excellent quality
High value

QUALITY SEEK SURVIVAL, PRESTIGE DEVELOPMENT

Since its establishment in 2013, YCZX has professional R&D personnel, high-end technical personnel and sales team, which can quickly respond to market demand. In the process of continuous innovation, strictly control product quality and process, give back to customers with high-quality and high-standard products, and serve customers with excellent professional skills.

HONEST SERVICE CUSTOMER FIRST

YCZX company adheres to the service concept of customer first and bases itself on the market with integrity. And also adheres to the customer-oriented business policy. The company constantly strengthens the service awareness of all employees, and provides customers with high-quality, efficient and thoughtful services through skills training and professional assessment for pre-sales, sales and after-sales teams!

OUR STORY

Jiangsu Youcheng Zhixin Electromechanical Equipment Co., Ltd. (referred to as "Youcheng Zhixin") Founded in 2013, it is now located in Kunshan, Jiangsu Province.

It is an enterprise that integrates research and development, design, production, and sales. The main products include: air storage tanks, vacuum pumps, motors, fans, pneumatic components, vacuum system hardware products, electronic materials, etc. The specific application areas mainly include the following: in the power industry, petrochemical industry, food industry, CNC processing, pharmaceutical industry, printing industry, aerospace industry, plastic industry, laboratory medical equipment, etc.

The company has always adhered to the principle of "customer first, people-oriented, quality first, and value first". With high-quality products, good reputation, and high-quality service, the products are best-selling nationwide and exported to 155 countries around the world. Sincerely cooperate with domestic and foreign merchants for win-win cooperation, common development, and create brilliance together!

1000

Under the Group
With 1000 employees

10000

Total area of the base
Over 10000 square meters

155

Our products are exported
to the world more than 155
countries and regions

50

And over 50 countries
established a good business
partnership

CARBON STEEL HORIZONTAL AIR STORAGE TANK

After equipping the air storage tank with an air compressor, it can not only store compressed air reduce pressure pulsation caused by the discontinuous discharge of the compressor, achieve a balance between air supply and consumption, but also reduce the temperature of compressed air, decrease the load on filters and desiccants. Please pay attention to on-site fire control and static electricity.



CARBON STEEL HORIZONTAL AIR STORAGE TANK



YC-1L-CSH

| | | | |
|--------------------|---|--------------|------------------|
| Material | Q235B | Volume | 1L/0.26Gallons |
| Outlet Size | G1/4 (*3) | Size | 175*108*125mm |
| Thickness | 2mm | Max Pressure | ≤1.25MPa (12Bar) |
| Install Size | Φ9, 100mm | Service Life | 7Years |
| Surface Technology | Powder Coating | | |
| Usage: | Mechanical equipment, automation and other industries of air or inert gas storage | | |



YC-2L-CSH

| | | | |
|--------------------|---|--------------|------------------|
| Material | Q235B | Volume | 2L/0.52Gallons |
| Outlet Size | G1/4 (*4) | Size | 230*110*130mm |
| Thickness | 2mm | Max Pressure | ≤1.25MPa (12Bar) |
| Install Size | Φ9, 100mm | Service Life | 7Years |
| Surface Technology | Powder Coating | | |
| Usage: | Mechanical equipment, automation and other industries of air or inert gas storage | | |



YC-3L-A-CSH

| | | | |
|--------------------|---|--------------|------------------|
| Material | Q235B | Volume | 3L/0.8Gallons |
| Outlet Size | G1/4 (*4) | Size | 160*160*220mm |
| Thickness | 2mm | Max Pressure | ≤1.25MPa (12Bar) |
| Install Size | Φ9, 100mm | Service Life | 7Years |
| Surface Technology | Powder Coating | | |
| Usage: | Mechanical equipment, automation and other industries of air or inert gas storage | | |



YC-3L-B-CSH

| | | | |
|--------------------|---|--------------|------------------|
| Material | Q235B | Volume | 3L/0.8Gallons |
| Outlet Size | G1/4 (*4) | Size | 160*160*170mm |
| Thickness | 2mm | Max Pressure | ≤1.25MPa (12Bar) |
| Install Size | Φ9, 160mm | Service Life | 7Years |
| Surface Technology | Powder Coating | | |
| Usage: | Mechanical equipment, automation and other industries of air or inert gas storage | | |



YC-3L-C-CSH

| | | | |
|--------------------|---|--------------|------------------|
| Material | Q235B | Volume | 3L/0.8Gallons |
| Outlet Size | G1/2 (*1) G1/4 (*3) | Size | 200*140*180mm |
| Thickness | 2mm | Max Pressure | ≤1.25MPa (12Bar) |
| Install Size | Φ9, 65*140mm | Service Life | 7Years |
| Surface Technology | Powder Coating | | |
| Usage: | Mechanical equipment, automation and other industries of air or inert gas storage | | |

CARBON STEEL HORIZONTAL AIR STORAGE TANK



YC-4L-CSH

| | | | |
|---|----------------|--------------|------------------|
| Material | Q235B | Volume | 4L/1.1Gallons |
| Outlet Size | G1/4 (*5) | Size | 260*160*190mm |
| Thickness | 2mm | Max Pressure | ≤1.25MPa (12Bar) |
| Install Size | Φ9, 110*80mm | Service Life | 7Years |
| Surface Technology | Powder Coating | | |
| Usage: Mechanical equipment, automation and other industries of air or inert gas storage | | | |



YC-5L-A-CSH

| | | | |
|---|----------------|--------------|------------------|
| Material | Q235B | Volume | 5L/1.4Gallons |
| Outlet Size | G1/2(*5) | Size | 300*160*190mm |
| Thickness | 2mm | Max Pressure | ≤1.25MPa (12Bar) |
| Install Size | Φ9, 170*98mm | Service Life | 7Years |
| Surface Technology | Powder Coating | | |
| Usage: Mechanical equipment, automation and other industries of air or inert gas storage | | | |



YC-5L-B-CSH

| | | | |
|---|----------------|--------------|------------------|
| Material | Q235B | Volume | 5L/1.4Gallons |
| Outlet Size | G1/4 (*5) | Size | 300*160*190mm |
| Thickness | 2mm | Max Pressure | ≤1.25MPa (12Bar) |
| Install Size | Φ9, 170*98mm | Service Life | 7Years |
| Surface Technology | Powder Coating | | |
| Usage: Mechanical equipment, automation and other industries of air or inert gas storage | | | |



YC-5L-C-CSH

| | | | |
|---|----------------|--------------|------------------|
| Material | Q235B | Volume | 5L/1.4Gallons |
| Outlet Size | G1/2 (*5) | Size | 355*140*160mm |
| Thickness | 2mm | Max Pressure | ≤1.25MPa (12Bar) |
| Install Size | Φ9, 220*80mm | Service Life | 7Years |
| Surface Technology | Powder Coating | | |
| Usage: Mechanical equipment, automation and other industries of air or inert gas storage | | | |



YC-5L-D-CSH

| | | | |
|---|----------------------|--------------|------------------|
| Material | Q235B | Volume | 5L/1.4Gallons |
| Outlet Size | G1/2(*4) G1/4(*1) | Size | 300*160*250mm |
| Thickness | 2mm | Max Pressure | ≤1.25MPa (12Bar) |
| Install Size | Φ9, 140*110mm | Service Life | 7Years |
| Surface Technology | Powder Coating | | |
| Usage: Mechanical equipment, automation and other industries of air or inert gas storage | | | |

CARBON STEEL HORIZONTAL AIR STORAGE TANK



YC-5L-E-CSH

| | | | |
|---|----------------------|--------------|------------------|
| Material | Q235B | Volume | 5L/1.4Gallons |
| Outlet Size | G1/2(*2) G1/4(*3) | Size | 270*160*190mm |
| Thickness | 2mm | Max Pressure | ≤1.25MPa (12Bar) |
| Install Size | Φ9, 65*140mm | Service Life | 7Years |
| Surface Technology | Powder Coating | | |
| Usage: Mechanical equipment, automation and other industries of air or inert gas storage | | | |



YC-5L-H-CSH

| | | | |
|---|----------------|--------------|------------------|
| Material | Q235B | Volume | 5L/1.4Gallons |
| Outlet Size | G1/4 (*4) | Size | 300*160*210mm |
| Thickness | 2mm | Max Pressure | ≤1.25MPa (12Bar) |
| Install Size | Φ9, 135*70mm | Service Life | 7Years |
| Surface Technology | Powder Coating | | |
| Usage: Mechanical equipment, automation and other industries of air or inert gas storage | | | |



YC-7L-GREY-CSH

| | | | |
|---|----------------------|--------------|------------------|
| Material | Q235B | Volume | 7L/1.9Gallons |
| Outlet Size | G1/2(*3) G1/4(*2) | Size | 385*180*225mm |
| Thickness | 2mm | Max Pressure | ≤1.25MPa (12Bar) |
| Install Size | Φ9, 195*140mm | Service Life | 7Years |
| Surface Technology | Powder Coating | | |
| Usage: Mechanical equipment, automation and other industries of air or inert gas storage | | | |



YC-7L-BLUE-CSH

| | | | |
|---|-------------------------------|--------------|------------------|
| Material | Q235B | Volume | 7L/1.9Gallons |
| Outlet Size | G1/2(*2) G1/4(*1) G3/8(*1) | Size | 300*180*245mm |
| Thickness | 2mm | Max Pressure | ≤1.25MPa (12Bar) |
| Install Size | Φ9, 200*100mm | Service Life | 7Years |
| Surface Technology | Powder Coating | | |
| Usage: Mechanical equipment, automation and other industries of air or inert gas storage | | | |



YC-8L-A-CSH

| | | | |
|---|----------------|--------------|------------------|
| Material | Q235B | Volume | 8L/2.2Gallons |
| Outlet Size | G1/2 (*4) | Size | 450*160*175mm |
| Thickness | 2mm | Max Pressure | ≤1.25MPa (12Bar) |
| Install Size | Φ9, 260*160mm | Service Life | 7Years |
| Surface Technology | Powder Coating | | |
| Usage: Mechanical equipment, automation and other industries of air or inert gas storage | | | |

CARBON STEEL HORIZONTAL AIR STORAGE TANK



YC-8L-B-CSH

| | | | |
|---|------------------------|----------------|------------------|
| Material | Q235B | Volume | 8L/2.2Gallons |
| Outlet Size | G1/2 (*4) G1/4 (*1) | Size | 430*160*210mm |
| Thickness | 2mm | Max Pressure | ≤1.25MPa (12Bar) |
| Install Size | Φ9, 240*100mm | Service Life | 7Years |
| Surface Technology | | Powder Coating | |
| Usage: Mechanical equipment, automation and other industries of air or inert gas storage | | | |



YC-10L-A-CSH

| | | | |
|---|------------------------|----------------|------------------|
| Material | Q235B | Volume | 10L/2.7Gallons |
| Outlet Size | G3/8 (*2) G1/4 (*2) | Size | 470*180*185mm |
| Thickness | 2mm | Max Pressure | ≤1.25MPa (12Bar) |
| Install Size | Φ9, 260*150mm | Service Life | 7Years |
| Surface Technology | | Powder Coating | |
| Usage: Mechanical equipment, automation and other industries of air or inert gas storage | | | |



YC-10L-B-CSH

| | | | |
|---|---------------------------|----------------|------------------|
| Material | Q235B | Volume | 10L/2.7Gallons |
| Outlet Size | G1/4 (*1) G1/2 (*4) | Size | 440*180*215mm |
| Thickness | 2.5mm | Max Pressure | ≤1.25MPa (12Bar) |
| Surface Technology | | Powder Coating | |
| Install Size | Φ9, 220*100mm (Long*Wide) | Service Life | 7Years |
| Usage: Mechanical equipment, automation and other industries of air or inert gas storage | | | |



YC-10L-C-CSH

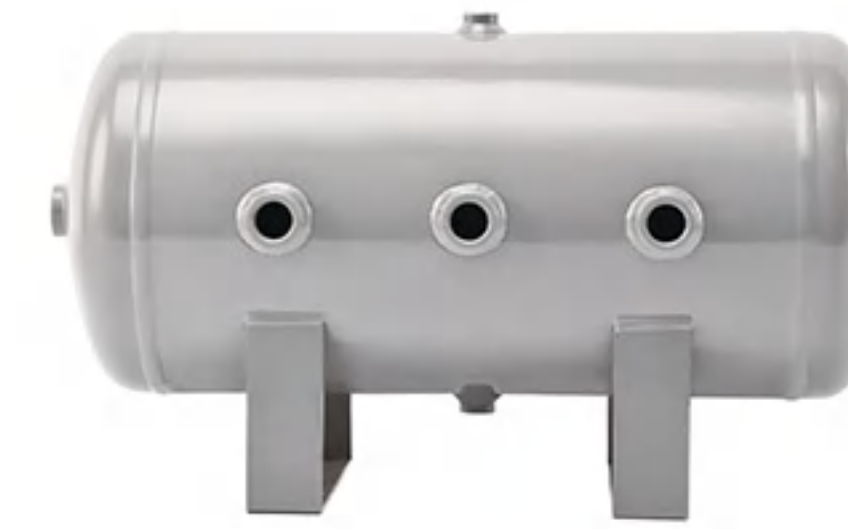
| | | | |
|---|---------------------------|----------------|------------------|
| Material | Q235B | Volume | 10L/2.7Gallons |
| Outlet Size | G1/4 (*1) G1/2 (*3) | Size | 330*220*270mm |
| Thickness | 2.5mm | Max Pressure | ≤1.25MPa (12Bar) |
| Surface Technology | | Powder Coating | |
| Install Size | Φ9, 140*160mm (Long*Wide) | Service Life | 7Years |
| Usage: Mechanical equipment, automation and other industries of air or inert gas storage | | | |



YC-10L-D-CSH

| | | | |
|---|------------------------------------|----------------|------------------|
| Material | Q235B | Volume | 10L/2.7Gallons |
| Outlet Size | G1-1/4 (*1) G1/2 (*3) G1/4 (*1) | Size | 447*180*260mm |
| Thickness | 2.5mm | Max Pressure | ≤1.25MPa (12Bar) |
| Surface Technology | | Powder Coating | |
| Install Size | Φ9, 180*140mm (Long*Wide) | Service Life | 7Years |
| Usage: Mechanical equipment, automation and other industries of air or inert gas storage | | | |

CARBON STEEL HORIZONTAL AIR STORAGE TANK



YC-10L-E-CSH

| | | | |
|---|---------------------------|----------------|------------------|
| Material | Q235B | Volume | 10L/2.7Gallons |
| Outlet Size | G1/2 (*4) G1/4 (*2) | Size | 440*200*260mm |
| Thickness | 2.5mm | Max Pressure | ≤1.25MPa (12Bar) |
| Surface Technology | | Powder Coating | |
| Install Size | Φ9, 190*110mm (Long*Wide) | Service Life | 7Years |
| Usage: Mechanical equipment, automation and other industries of air or inert gas storage | | | |



YC-10L-F-CSH

| | | | |
|---|---------------------------|----------------|------------------|
| Material | Q235B | Volume | 10L/2.7Gallons |
| Outlet Size | G1/4 (*5) | Size | 430*180*210mm |
| Thickness | 2.5mm | Max Pressure | ≤1.25MPa (12Bar) |
| Surface Technology | | Powder Coating | |
| Install Size | Φ9, 240*100mm (Long*Wide) | Service Life | 7Years |
| Usage: Mechanical equipment, automation and other industries of air or inert gas storage | | | |



YC-10L-H-CSH

| | | | |
|---|---------------------------|----------------|------------------|
| Material | Q235B | Volume | 10L/2.7Gallons |
| Outlet Size | G1/2 (*3) G1/4 (*3) | Size | 465*200*275mm |
| Thickness | 2.5mm | Max Pressure | ≤1.25MPa (12Bar) |
| Surface Technology | | Powder Coating | |
| Install Size | Φ9, 230*130mm (Long*Wide) | Service Life | 7Years |
| Usage: Mechanical equipment, automation and other industries of air or inert gas storage | | | |



YC-10L-J-CSH

| | | | |
|---|---------------------------|----------------|------------------|
| Material | Q235B | Volume | 10L/2.7Gallons |
| Outlet Size | G1/2 (*4) G1/4 (*1) | Size | 280*220*260mm |
| Thickness | 2.5mm | Max Pressure | ≤1.25MPa (12Bar) |
| Surface Technology | | Powder Coating | |
| Install Size | Φ9, 150*100mm (Long*Wide) | Service Life | 7Years |
| Usage: Mechanical equipment, automation and other industries of air or inert gas storage | | | |



YC-12L-A-CSH

| | | | |
|---|------------------------|----------------|------------------|
| Material | Q235B | Volume | 12L/3.2Gallons |
| Outlet Size | G1/2 (*3) G1/4 (*1) | Size | 320*236*318mm |
| Thickness | 2.5mm | Max Pressure | ≤1.25MPa (12Bar) |
| Surface Technology | | Powder Coating | |
| Install Size | Φ9, 120*172mm | Service Life | 7Years |
| Usage: Mechanical equipment, automation and other industries of air or inert gas storage | | | |

CARBON STEEL HORIZONTAL AIR STORAGE TANK



YC-12L-B-CSH

| | | | |
|---|------------------------|----------------|------------------|
| Material | Q235B | Volume | 12L/3.2Gallons |
| Outlet Size | G1/2 (*2) G1/4 (*1) | Size | 320*236*308mm |
| Thickness | 2.5mm | Max Pressure | ≤1.25MPa (12Bar) |
| Install Size | Φ9, 150*220mm | Service Life | 7Years |
| Surface Technology | | Powder Coating | |
| Usage: Mechanical equipment, automation and other industries of air or inert gas storage | | | |



YC-15L-CSH

| | | | |
|---|------------------------|----------------|------------------|
| Material | Q235B | Volume | 15L/4Gallons |
| Outlet Size | G1/2 (*4) G1/4 (*1) | Size | 390*236*290mm |
| Thickness | 2.5mm | Max Pressure | ≤1.25MPa (12Bar) |
| Install Size | Φ9, 180*172mm | Service Life | 7Years |
| Surface Technology | | Powder Coating | |
| Usage: Mechanical equipment, automation and other industries of air or inert gas storage | | | |



YC-20L-A-CSH

| | | | |
|---|------------------------|----------------|------------------|
| Material | Q235B | Volume | 20L/5.3Gallons |
| Outlet Size | G1/4 (*1) G1/2 (*4) | Size | 360*280*335mm |
| Thickness | 2.5mm | Max Pressure | ≤1.25MPa (12Bar) |
| Install Size | Φ9, 150*140mm | Service Life | 7Years |
| Surface Technology | | Powder Coating | |
| Usage: Mechanical equipment, automation and other industries of air or inert gas storage | | | |



YC-20L-B-CSH

| | | | |
|---|------------------------|----------------|------------------|
| Material | Q235B | Volume | 20L/5.3Gallons |
| Outlet Size | G1/4 (*1) G1/2 (*2) | Size | 350*280*400mm |
| Thickness | 2.5mm | Max Pressure | ≤1.25MPa (12Bar) |
| Install Size | Φ9, 165*165mm | Service Life | 7Years |
| Surface Technology | | Powder Coating | |
| Usage: Mechanical equipment, automation and other industries of air or inert gas storage | | | |



YC-20L-C-CSH

| | | | |
|---|------------------------|----------------|------------------|
| Material | Q235B | Volume | 20L/5.3Gallons |
| Outlet Size | G1/4 (*2) G1/2 (*2) | Size | 440*240*315mm |
| Thickness | 2.5mm | Max Pressure | ≤1.25MPa (12Bar) |
| Install Size | Φ9, 190*110mm | Service Life | 7Years |
| Surface Technology | | Powder Coating | |
| Usage: Mechanical equipment, automation and other industries of air or inert gas storage | | | |

CARBON STEEL HORIZONTAL AIR STORAGE TANK



YC-20L-C-G1/2-CSH

| | | | |
|---|------------------------|----------------|------------------|
| Material | Q235B | Volume | 20L/5.3Gallons |
| Outlet Size | G1/2 (*5) G1/4 (*1) | Size | 500*230*310mm |
| Thickness | 2.5mm | Max Pressure | ≤1.25MPa (12Bar) |
| Install Size | Φ9, 220*125mm | Service Life | 7Years |
| Surface Technology | | Powder Coating | |
| Usage: Mechanical equipment, automation and other industries of air or inert gas storage | | | |



YC-24L-A-CSH

| | | | |
|---|------------------------|----------------|------------------|
| Material | Q235B | Volume | 24L/6.4Gallons |
| Outlet Size | G1/2 (*3) G1/4 (*1) | Size | 500*236*305mm |
| Thickness | 2.5mm | Max Pressure | ≤1.25MPa (12Bar) |
| Install Size | Φ9, 280*172mm | Service Life | 7Years |
| Surface Technology | | Powder Coating | |
| Usage: Mechanical equipment, automation and other industries of air or inert gas storage | | | |



YC-24L-B-CSH

| | | | |
|---|------------------------|----------------|------------------|
| Material | Q235B | Volume | 24L/6.4Gallons |
| Outlet Size | G1/2 (*7) G1/4 (*1) | Size | 500*236*261mm |
| Thickness | 2.5mm | Max Pressure | ≤1.25MPa (12Bar) |
| Install Size | Φ9, 260*172mm | Service Life | 7Years |
| Surface Technology | | Powder Coating | |
| Usage: Mechanical equipment, automation and other industries of air or inert gas storage | | | |



YC-24L-C-CSH

| | | | |
|---|------------------------|----------------|------------------|
| Material | Q235B | Volume | 24L/6.4Gallons |
| Outlet Size | G1/2 (*4) G1/4 (*1) | Size | 500*236*261mm |
| Thickness | 2.5mm | Max Pressure | ≤1.25MPa (12Bar) |
| Install Size | Φ9, 280*172mm | Service Life | 7Years |
| Surface Technology | | Powder Coating | |
| Usage: Mechanical equipment, automation and other industries of air or inert gas storage | | | |



YC-24L-D-CSH

| | | | |
|---|--------------------------------|----------------|------------------|
| Material | Q235B | Volume | 24L/6.4Gallons |
| Outlet Size | G1/2 (*3) G1/4 (*1) G1 (*1) | Size | 500*236*261mm |
| Thickness | 2.5mm | Max Pressure | ≤1.25MPa (12Bar) |
| Install Size | Φ9, 295*120mm | Service Life | 7Years |
| Surface Technology | | Powder Coating | |
| Usage: Mechanical equipment, automation and other industries of air or inert gas storage | | | |

CARBON STEEL HORIZONTAL AIR STORAGE TANK



YC-30L-A [TOP 4 HOLES]-CSH

| | | | |
|---|------------------------|----------------|-------------------|
| Material | Q235B | Volume | 30L/8Gallons |
| Outlet Size | G1/2 (*6) G1/4 (*1) | Size | 450*320*355mm |
| Thickness | 2.5mm | Max Pressure | ≤0.84MPa (8.4Bar) |
| Install Size | Φ9, 196*240mm | Service Life | 7 Years |
| Surface Technology | | Powder Coating | |
| Usage: Mechanical equipment, automation and other industries of air or inert gas storage | | | |



YC-30L-A [TOP 5 HOLES]-CSH

| | | | |
|---|------------------------|----------------|-------------------|
| Material | Q235B | Volume | 30L/8Gallons |
| Outlet Size | G1/2 (*7) G1/4 (*1) | Size | 450*320*355mm |
| Thickness | 2.5mm | Max Pressure | ≤0.84MPa (8.4Bar) |
| Install Size | Φ9, 196*240mm | Service Life | 7 Years |
| Surface Technology | | Powder Coating | |
| Usage: Mechanical equipment, automation and other industries of air or inert gas storage | | | |



YC-30L-B-CSH

| | | | |
|---|------------------------|----------------|-------------------|
| Material | Q235B | Volume | 30L/8Gallons |
| Outlet Size | G1/4 (*1) G1/2 (*4) | Size | 450*320*350mm |
| Thickness | 2.5mm | Max Pressure | ≤0.84MPa (8.4Bar) |
| Install Size | Φ9, 196*240mm | Service Life | 7 Years |
| Surface Technology | | Powder Coating | |
| Usage: Mechanical equipment, automation and other industries of air or inert gas storage | | | |



YC-30L-C-CSH

| | | | |
|---|------------------------|----------------|-------------------|
| Material | Q235B | Volume | 30L/8Gallons |
| Outlet Size | G1/4 (*1) G1/2 (*4) | Size | 650*236*300mm |
| Thickness | 2.5mm | Max Pressure | ≤0.84MPa (8.4Bar) |
| Install Size | Φ9, 410*150mm | Service Life | 7 Years |
| Surface Technology | | Powder Coating | |
| Usage: Mechanical equipment, automation and other industries of air or inert gas storage | | | |



YC-35L-CSH

| | | | |
|---|------------------------|----------------|-------------------|
| Material | Q235B | Volume | 35L/9.3Gallons |
| Outlet Size | G1/4 (*1) G1/2 (*4) | Size | 722*236*275mm |
| Thickness | 2.5mm | Max Pressure | ≤0.84MPa (8.4Bar) |
| Install Size | Φ9, 500*172mm | Service Life | 7 Years |
| Surface Technology | | Powder Coating | |
| Usage: Mechanical equipment, automation and other industries of air or inert gas storage | | | |

CARBON STEEL HORIZONTAL AIR STORAGE TANK



YC-40L-CSH

| | | | |
|---|------------------------|----------------|--------------------|
| Material | Q235B | Volume | 40L/10.7Gallons |
| Outlet Size | G1/2 (*5) G1/4 (*1) | Size | 650*280*330mm |
| Thickness | 2.5mm | Max Pressure | ≤1.05MPa (10.5Bar) |
| Install Size | Φ9, 400*180mm | Service Life | 7 Years |
| Surface Technology | | Powder Coating | |
| Usage: Mechanical equipment, automation and other industries of air or inert gas storage | | | |



YC-45L-CSH

| | | | |
|---|------------------------|----------------|--------------------|
| Material | Q235B | Volume | 45L/11.9Gallons |
| Outlet Size | G1/2 (*4) G1/4 (*1) | Size | 530*320*380mm |
| Thickness | 3mm | Max Pressure | ≤1.31MPa (13.1Bar) |
| Install Size | Φ9, 180*210mm | Service Life | 7 Years |
| Surface Technology | | Powder Coating | |
| Usage: Mechanical equipment, automation and other industries of air or inert gas storage | | | |



YC-50L-A-CSH

| | | | |
|---|------------------------|----------------|-------------------|
| Material | Q235B | Volume | 50L/13.2Gallons |
| Outlet Size | G1/2 (*4) G1/4 (*1) | Size | 550*320*380mm |
| Thickness | 3mm | Max Pressure | ≤0.84MPa (8.4Bar) |
| Install Size | Φ9, 180*210mm | Service Life | 7 Years |
| Surface Technology | | Powder Coating | |
| Usage: Mechanical equipment, automation and other industries of air or inert gas storage | | | |



YC-50L-B-CSH

| | | | |
|---|------------------------|----------------|-------------------|
| Material | Q235B | Volume | 50L/13.2Gallons |
| Outlet Size | G1/2 (*6) G1/4 (*1) | Size | 712*300*392mm |
| Thickness | 3mm | Max Pressure | ≤0.84MPa (8.4Bar) |
| Install Size | Φ9, 455*115mm | Service Life | 7 Years |
| Surface Technology | | Powder Coating | |
| Usage: Mechanical equipment, automation and other industries of air or inert gas storage | | | |



YC-50L-B [TOP 3 HOLES]-CSH

| | | | |
|---|------------------------|----------------|-------------------|
| Material | Q235B | Volume | 50L/13.2Gallons |
| Outlet Size | G1/2 (*7) G1/4 (*1) | Size | 710*300*400mm |
| Thickness | 3mm | Max Pressure | ≤0.84MPa (8.4Bar) |
| Install Size | Φ9, 455*120mm | Service Life | 7 Years |
| Surface Technology | | Powder Coating | |
| Usage: Mechanical equipment, automation and other industries of air or inert gas storage | | | |

CARBON STEEL HORIZONTAL AIR STORAGE TANK



YC-60L-A-CSH

| | | | |
|---|-----------------------------|--------------|-------------------|
| Material | Q235B | Volume | 60L/15.9Gallons |
| Outlet Size | G1/4(*1) G1/2(*4) G1(*1) | Size | 860*300*355mm |
| Thickness | 3mm | Max Pressure | ≤0.84MPa (8.4Bar) |
| Install Size | Φ11,500*180mm | Service Life | 7Years |
| Surface Technology | Powder Coating | | |
| Usage: Mechanical equipment, automation and other industries of air or inert gas storage | | | |



YC-60L-S-CSH

| | | | |
|---|--|----------------|------------------|
| Material | Q235B | Volume | 60L/15.9Gallons |
| Outlet Size | G3/8(*2) G1/2(*5) G1/4(*3) G3/4(*4) | Size | 780*325*380mm |
| Thickness | 3mm | Pressurization | ≤1.25MPa (12Bar) |
| Install Size | Φ9,430*210mm | Service Life | 7Years |
| Surface Technology | Powder Coating | | |
| Usage: Mechanical equipment, automation and other industries of air or inert gas storage | | | |



YC-60L-PLATE-CSH

| | | | |
|---|--------------------------------------|--------------|------------------|
| Material | Q235B | Volume | 60L/15.9Gallons |
| Outlet Size | G1(*1) G1/2(*3) G1/4(*1) G3/4(*1) | Size | 900*300*370mm |
| Thickness | 3mm | Max Pressure | ≤1.25MPa (12Bar) |
| Install Size | Φ9,500*180mm | Service Life | 7Years |
| Surface Technology | Powder Coating | | |
| Usage: Mechanical equipment, automation and other industries of air or inert gas storage | | | |



YC-60L-B-CSH

| | | | |
|---|----------------------|--------------|-------------------|
| Material | Q235B | Volume | 60L/15.9Gallons |
| Outlet Size | G1/4(*1) G1/2(*5) | Size | 990*280*320mm |
| Thickness | 3mm | Max Pressure | ≤0.84MPa (8.4Bar) |
| Install Size | Φ9,500*180mm | Service Life | 7Years |
| Surface Technology | Powder Coating | | |
| Usage: Mechanical equipment, automation and other industries of air or inert gas storage | | | |



YC-80L-CSH

| | | | |
|---|-----------------------------|--------------|-------------------|
| Material | Q235B | Volume | 80L/21.2Gallons |
| Outlet Size | G1/4(*1) G1(*2) G1/2(*3) | Size | 850*350*420mm |
| Thickness | 3mm | Max Pressure | ≤0.84MPa (8.4Bar) |
| Install Size | Φ11,400*250mm | Service Life | 7Years |
| Surface Technology | Powder Coating | | |
| Usage: Mechanical equipment, automation and other industries of air or inert gas storage | | | |

CARBON STEEL HORIZONTAL AIR STORAGE TANK



YC-100L-CSH

| | | | |
|---|-----------------------------|--------------|-------------------|
| Material | Q235B | Volume | 100L/26.5Gallons |
| Outlet Size | G1/2(*4) G1/4(*1) G1(*2) | Size | 1040*350*355mm |
| Thickness | 3mm | Max Pressure | ≤0.84MPa (8.4Bar) |
| Install Size | Φ16,660*292mm | Service Life | 7Years |
| Surface Technology | Powder Coating | | |
| Usage: Mechanical equipment, automation and other industries of air or inert gas storage | | | |



YC-100L-DOUBLE PLATE-CSH

| | | | |
|---|------------------------|--------------|------------------|
| Material | Q235B | Volume | 100L/26.5Gallons |
| Outlet Size | G1-1/4(*2) G1/4(*6) | Size | 1200*325*370mm |
| Thickness | 3mm | Max Pressure | ≤1.25MPa (12Bar) |
| Install Size | Φ16,900*240mm | Service Life | 7Years |
| Surface Technology | Powder Coating | | |
| Usage: Mechanical equipment, automation and other industries of air or inert gas storage | | | |



YC-125L-CSH

| | | | |
|---|-----------------------------|--------------|-------------------|
| Material | Q235B | Volume | 125L/33Gallons |
| Outlet Size | G1/2(*5) G1/4(*1) G1(*2) | Size | 1000*400*450mm |
| Thickness | 3mm | Max Pressure | ≤0.84MPa (8.4Bar) |
| Install Size | Φ11,780*340mm | Service Life | 7Years |
| Surface Technology | Powder Coating | | |
| Usage: Mechanical equipment, automation and other industries of air or inert gas storage | | | |



YC-130L-CSH

| | | | |
|---|------------------------|--------------|-------------------|
| Material | Q235B | Volume | 130L/34.3Gallons |
| Outlet Size | G1-1/2(*2) G1/2(*1) | Size | 1050*400*456mm |
| Thickness | 3mm | Max Pressure | ≤0.84MPa (8.4Bar) |
| Install Size | Φ9,688*370mm | Service Life | 7Years |
| Surface Technology | Powder Coating | | |
| Usage: Mechanical equipment, automation and other industries of air or inert gas storage | | | |



YC-150L-GREY-CSH

| | | | |
|---|---------------------------------|--------------|------------------|
| Material | Q235B | Volume | 150L/39.6Gallons |
| Outlet Size | G1/2(*4) G1/4(*2) G1-1/4(*2) | Size | 1340*400*495mm |
| Thickness | 3mm | Max Pressure | ≤1.25MPa (12Bar) |
| Install Size | Φ12,900*340mm | Service Life | 7Years |
| Surface Technology | Powder Coating | | |
| Usage: Mechanical equipment, automation and other industries of air or inert gas storage | | | |

CARBON STEEL HORIZONTAL AIR STORAGE TANK



YC-150L-CSH

| | | | |
|---|---------------------------------|--------------|------------------|
| Material | Q235B | Volume | 150L/39.6Gallons |
| Outlet Size | G1/4(*2) G1/2(*4) G1-1/4(*2) | Size | 1340*400*495mm |
| Thickness | 3mm | Max Pressure | ≤1.25MPa (12Bar) |
| Install Size | Φ12,900*340mm | Service Life | 7Years |
| Surface Technology | Powder Coating | | |
| Usage: Mechanical equipment, automation and other industries of air or inert gas storage | | | |



YC-180L-PLATE-CSH

| | | | |
|---|------------------------|--------------|------------------|
| Material | Q235B | Volume | 180L/47.6Gallons |
| Outlet Size | G1/2(*6) G1-1/2(*2) | Size | 1400*400*500mm |
| Thickness | 3mm | Max Pressure | ≤1.25MPa (12Bar) |
| Install Size | Φ16,1000*300mm | Service Life | 7Years |
| Surface Technology | Powder Coating | | |
| Usage: Mechanical equipment, automation and other industries of air or inert gas storage | | | |



YC-300L-PLATE-CSH

| | | | |
|---|-----------------------------|--------------|------------------|
| Material | Q235B | Volume | 300L/79.2Gallons |
| Outlet Size | G1/2(*4) G1/4(*1) G2(*2) | Size | 1600*500*600mm |
| Thickness | 3mm | Max Pressure | ≤1.25MPa (12Bar) |
| Install Size | Φ16,1000*405mm | Service Life | 7Years |
| Surface Technology | Powder Coating | | |
| Usage: Mechanical equipment, automation and other industries of air or inert gas storage | | | |



YC-500L-PLATE-CSH

| | | | |
|---|--------------------|--------------|------------------|
| Material | Q235B | Volume | 500L/132Gallons |
| Outlet Size | G2(*2) G1/2(*6) | Size | 1700*600*760mm |
| Thickness | 3mm | Max Pressure | ≤1.25MPa (12Bar) |
| Install Size | Φ16,1200*500mm | Service Life | 7Years |
| Surface Technology | Powder Coating | | |
| Usage: Mechanical equipment, automation and other industries of air or inert gas storage | | | |



YC-5L-HIGH PRESSURE

| | | | |
|---|----------------------|--------------|---------------|
| Material | Q235B | Volume | 5L/1.4Gallons |
| Outlet Size | G1/4(*3) G1/2(*2) | Size | 290*159*249mm |
| Thickness | 5mm | Max Pressure | 3.0MPa~5.0MPa |
| Install Size | Φ9,120*80mm | Service Life | 7Years |
| Surface Technology | Powder Coating | | |
| Usage: Mechanical equipment, automation and other industries of air or inert gas storage | | | |

CARBON STEEL HORIZONTAL AIR STORAGE TANK



YC-10L-HIGH PRESSURE

| | | | |
|---|----------------------|--------------|----------------|
| Material | Q235B | Volume | 10L/2.7Gallons |
| Outlet Size | G1/2(*4) G1/4(*1) | Size | 530*159*249mm |
| Thickness | 5mm | Max Pressure | 3.0MPa~5.0MPa |
| Install Size | Φ9,310*80mm | Service Life | 7Years |
| Surface Technology | Powder Coating | | |
| Usage: Mechanical equipment, automation and other industries of air or inert gas storage | | | |



YC-20L-HIGH PRESSURE

| | | | |
|---|----------------------|--------------|----------------|
| Material | Q235B | Volume | 20L/5.3Gallons |
| Outlet Size | G1/2(*4) G1/4(*1) | Size | 626*219*289mm |
| Thickness | 5mm | Max Pressure | 3.0MPa~5.0MPa |
| Install Size | Φ9,280*160mm | Service Life | 7Years |
| Surface Technology | Powder Coating | | |
| Usage: Mechanical equipment, automation and other industries of air or inert gas storage | | | |



YC-6L-TWO IN ONE

| | | | |
|---|----------------------|--------------|------------------|
| Material | Q235B | Volume | 6L/1.5Gallons |
| Outlet Size | G1/2(*4) G1/4(*2) | Size | 340*160*220mm |
| Thickness | 2mm | Max Pressure | ≤1.25MPa (12Bar) |
| Install Size | Φ9,170*100mm | Service Life | 7Years |
| Surface Technology | Powder Coating | | |
| Usage: Mechanical equipment, automation and other industries of air or inert gas storage | | | |



YC-8L-TWO IN ONE

| | | | |
|---|----------------------|--------------|------------------|
| Material | Q235B | Volume | 8L/2.2Gallons |
| Outlet Size | G1/2(*4) G1/4(*2) | Size | 450*160*220mm |
| Thickness | 2mm | Max Pressure | ≤1.25MPa (12Bar) |
| Install Size | Φ10,240*100mm | Service Life | 7Years |
| Surface Technology | Powder Coating | | |
| Usage: Mechanical equipment, automation and other industries of air or inert gas storage | | | |



YC-10L-TWO IN ONE

| | | | |
|---|----------------------|--------------|------------------|
| Material | Q235B | Volume | 10L/2.7Gallons |
| Outlet Size | G1/2(*4) G1/4(*2) | Size | 460*160*210mm |
| Thickness | 2mm | Max Pressure | ≤1.25MPa (12Bar) |
| Install Size | Φ10,240*100mm | Service Life | 7Years |
| Surface Technology | Powder Coating | | |
| Usage: Mechanical equipment, automation and other industries of air or inert gas storage | | | |

CARBON STEEL HORIZONTAL AIR STORAGE TANK



| YC-20L-HANDLE | | | |
|---|--|--------------|------------------|
| Material | Q235B | Volume | 20L/5.3Gallons |
| Outlet Size | G1/4(*4) G1/2(*1) | Size | 510*220*490mm |
| Thickness | 2.5mm | Max Pressure | ≤1.25MPa (12Bar) |
| Surface Technology | Powder Coating | | |
| Install Size | Φ9, 300*180mm (Top mounting dimensions 200*90mm) | | |
| Service Life | 7 Years | | |
| Usage: Mechanical equipment, automation and other industries of air or inert gas storage | | | |



| YC-40L-HANDLE | | | |
|---|---------------------------------------|--------------|------------------|
| Material | Q235B | Volume | 40L/10.7Gallons |
| Outlet Size | G1/4(*1) G1/2(*4) | Size | 620*280*560mm |
| Thickness | 2.5mm | Max Pressure | ≤1.25MPa (12Bar) |
| Surface Technology | Powder Coating | | |
| Install Size | Φ9, Top mounting dimensions 245*125mm | | |
| Service Life | 7 Years | | |
| Usage: Mechanical equipment, automation and other industries of air or inert gas storage | | | |



| YC-40L-HANDLE | | | |
|---|--------------------------------|--------------|------------------|
| Material | Q235B | Volume | 40L/10.7Gallons |
| Outlet Size | G1/4(*1) G1/2(*3) G3/4 (*1) | Size | 710*270*590mm |
| Thickness | 2.5mm | Max Pressure | ≤1.25MPa (12Bar) |
| Surface Technology | Powder Coating | | |
| Install Size | Φ9, 370*180mm (Long*Wide) | | |
| Service Life | 7 Years | | |
| Usage: Mechanical equipment, automation and other industries of air or inert gas storage | | | |

Support non-standard customization (full series)

CARBON STEEL HORIZONTAL AIR STORAGE TANK



| YC-50L-HANDLE | | | |
|---|---|--------------|------------------|
| Material | Q235B | Volume | 50L/13.3Gallons |
| Outlet Size | G1/4(*1) G3/4(*1) G1/2(*3) | Size | 660*300*560mm |
| Thickness | 2.5mm | Max Pressure | ≤1.25MPa (12Bar) |
| Surface Technology | Powder Coating | | |
| Install Size | Φ9, 400*220mm (Top mounting dimensions 170*110mm) | | |
| Service Life | 7 Years | | |
| Usage: Mechanical equipment, automation and other industries of air or inert gas storage | | | |



| YC-60L-HANDLE | | | |
|---|--|--------------|------------------|
| Material | Q235B | Volume | 60L/15.9Gallons |
| Outlet Size | G1/4(*1) G3/4(*1) G1/2(*3) | Size | 810*300*590mm |
| Thickness | 2.5mm | Max Pressure | ≤1.25MPa (12Bar) |
| Surface Technology | Powder Coating | | |
| Install Size | Φ11, 500*230mm (Top mounting dimensions 245*120mm) | | |
| Service Life | 7 Years | | |
| Usage: Mechanical equipment, automation and other industries of air or inert gas storage | | | |

CUSTOMIZE AS YOU WANT

[PARTIAL CUSTOMER CUSTOMIZATION CASES]



VBA BOOSTER VALVE



VBA10A-02

| | | | |
|-------------------------------------|-------------------------|----------------|----------------|
| Pressure Ratio | Twice | Interface Size | RC 1/4 |
| Adjustment Range | 0.2~2.0MPa | Flow | 230L/min |
| Installation Size Of Pressure Gauge | RC 1/8 | | |
| Installation Method | Horizontal Installation | | |
| Connection Size | 40*60mm | Fluids | Compressed Air |
| Installation Aperture | Φ5.5 | Size | 150*70*115mm |
| Medium: Various gas media | | | |



VBA10A-02GN

| | | | |
|-------------------------------------|-------------------------|----------------|----------------|
| Pressure Ratio | Twice | Interface Size | RC 1/4 |
| Adjustment Range | 0.2~2.0MPa | Flow | 230L/min |
| Installation Size Of Pressure Gauge | RC 1/8 | | |
| Installation Method | Horizontal Installation | | |
| Connection Size | 40*60mm | Fluids | Compressed air |
| Installation Aperture | Φ5.5 | Size | 150*70*115mm |
| Medium: Various gas media | | | |



VBA20A-03

| | | | |
|-------------------------------------|-------------------------|----------------|----------------|
| Pressure Ratio | Twice | Interface Size | RC 3/8 |
| Adjustment Range | 0.2~1.0MPa | Flow | 1000L/min |
| Installation Size Of Pressure Gauge | RC 1/8 | | |
| Installation Method | Horizontal Installation | | |
| Connection Size | 53*98mm | Fluids | Compressed Air |
| Installation Aperture | Φ12 | Size | 300*117*175mm |
| Medium: Various gas media | | | |



VBA20A-03GN

| | | | |
|-------------------------------------|-------------------------|----------------|----------------|
| Pressure Ratio | Twice | Interface Size | RC 3/8 |
| Adjustment Range | 0.2~1.0MPa | Flow | 1000L/min |
| Installation Size Of Pressure Gauge | RC 1/8 | | |
| Installation Method | Horizontal Installation | | |
| Connection Size | 53*98mm | Fluids | Compressed air |
| Installation Aperture | Φ12 | Size | 300*117*175mm |
| Medium: Various gas media | | | |

VBA BOOSTER VALVE



VBA22A-03

| | | | |
|-------------------------------------|-------------------------|----------------|----------------|
| Pressure Ratio | Twice | Interface Size | RC 3/8 |
| Adjustment Range | 0.2~1.0MPa | Flow | 1000L/min |
| Installation Size Of Pressure Gauge | RC 1/8 | | |
| Installation Method | Horizontal Installation | | |
| Connection Size | 53*98mm | Fluids | Compressed Air |
| Installation Aperture | Φ12 | Size | 305*118*140mm |
| Medium: Various gas media | | | |



VBA40A-04

| | | | |
|-------------------------------------|-------------------------|----------------|----------------|
| Pressure Ratio | Twice | Interface Size | RC 1/2 |
| Adjustment Range | 0.2~1.0MPa | Flow | 1900L/min |
| Installation Size Of Pressure Gauge | RC 1/8 | | |
| Installation Method | Horizontal Installation | | |
| Connection Size | 95*130mm | Fluids | Compressed Air |
| Installation Aperture | Φ12 | Size | 405*150*225mm |
| Medium: Various gas media | | | |



VBA40A-04GN

| | | | |
|-------------------------------------|-------------------------|----------------|----------------|
| Pressure Ratio | Twice | Interface Size | RC 1/2 |
| Adjustment Range | 0.2~1.0MPa | Flow | 1900L/min |
| Installation Size Of Pressure Gauge | RC 1/8 | | |
| Installation Method | Horizontal Installation | | |
| Connection Size | 95*130mm | Fluids | Compressed air |
| Installation Aperture | Φ12 | Size | 405*150*225mm |
| Medium: Various gas media | | | |



VBA42A-04

| | | | |
|-------------------------------------|-------------------------|----------------|----------------|
| Pressure Ratio | Twice | Interface Size | RC 1/2 |
| Adjustment range | 0.2~1.0MPa | Flow | 1900L/min |
| Installation Size Of Pressure Gauge | RC 1/8 | | |
| Installation Method | Horizontal Installation | | |
| Connection Size | 95*130mm | Fluids | Compressed air |
| Installation Aperture | Φ12 | Size | 405*150*175mm |
| Medium: Various gas media | | | |

VBA BOOSTER VALVE



VBA43A-04GN

| | | | |
|-------------------------------------|-------------------------|----------------|----------------|
| Pressure Ratio | Twice | Interface Size | RC 1/2 |
| Adjustment Range | 0.2~1.6MPa | Flow | 1600L/min |
| Installation Size Of Pressure Gauge | RC 1/8 | | |
| Installation method | Horizontal Installation | | |
| Connection Size | 95*130mm | Fluids | Compressed Air |
| Installation Aperture | Φ12 | Size | 405*150*225mm |
| Medium: Various gas media | | | |



VBA10A-02GN+VBAT-5L

| | | | |
|-------------------------------------|---------------|----------------|----------|
| Pressure Ratio | Twice | Interface Size | RC 1/4 |
| Adjustment Range | 0.2~2.0MPa | Flow | 230L/min |
| Installation Size Of Pressure Gauge | RC1/8 | | |
| The Air Receiver Is Under Pressure | ≤1.25MPa | | |
| Size | 360*160*365mm | | |
| Medium: Various gas media | | | |



VBA10A-02GN+VBAT-10L

| | | | |
|-------------------------------------|---------------|----------------|----------|
| Pressure Ratio | Twice | Interface Size | RC 1/4 |
| Adjustment Range | 0.2~2.0MPa | Flow | 230L/min |
| Installation Size Of Pressure Gauge | RC1/8 | | |
| The Air Receiver Is Under Pressure | ≤1.25MPa | | |
| Size | 460*180*385mm | | |
| Medium: Various gas media | | | |



VBA20A-03GN+VBAT-20L

| | | | |
|-------------------------------------|---------------|----------------|-----------|
| Pressure Ratio | Twice | Interface Size | RC 3/8 |
| Adjustment Range | 0.2~1.0MPa | Flow | 1000L/min |
| Installation Size Of Pressure Gauge | RC 1/8 | | |
| The Air Receiver Is Under Pressure | ≤1.25MPa | | |
| Size | 360*160*365mm | | |
| Medium: Various gas media | | | |

BOOSTER TANK



VBA40A-04GN+VBAT-40L

| | | | |
|-------------------------------------|---------------|----------------|-----------|
| Pressure Ratio | Twice | Interface Size | RC 1/2 |
| Adjustment range | 0.2~1.0MPa | Flow | 1900L/min |
| Installation Size Of Pressure Gauge | RC 1/8 | | |
| The Air Receiver Is Under Pressure | ≤1.25MPa | | |
| Size | 855*210*575mm | | |
| Medium: Various gas media | | | |



VBA10A SUIT

| | | | |
|-------------------------------------|--|----------------|----------|
| Pressure Ratio | Twice | Interface Size | RC 1/4 |
| Adjustment Range | 0.2~2.0MPa | Flow | 230L/min |
| Installation Size Of Pressure Gauge | RC 1/8 | | |
| The Air Receiver Is Under Pressure | ≤1.25MPa | | |
| Size | 460*290*385mm | | |
| Pairing Packages | 10L booster tank, VBA10A booster valve, 2 parts in two | | |
| Medium: Various gas media | | | |



VBA20A SUIT

| | | | |
|-------------------------------------|--|----------------|-----------|
| Pressure Ratio | Twice | Interface Size | RC 3/8 |
| Adjustment range | 0.2~1.0MPa | Flow | 1000L/min |
| Installation Size Of Pressure Gauge | RC 1/8 | | |
| The Air Receiver Is Under Pressure | ≤1.25MPa | | |
| Size | 685*300*475mm | | |
| Pairing Packages | 20L booster tank, VBA20A booster valve, 3 parts in two | | |
| Medium: Various gas media | | | |



VBA40A SUIT

| | | | |
|-------------------------------------|--|----------------|-----------|
| Pressure Ratio | Twice | Interface Size | RC 1/2 |
| Adjustment Range | 0.2~1.0MPa | Flow | 1900L/min |
| Installation Size Of Pressure Gauge | RC 1/8 | | |
| The Air Receiver Is Under Pressure | ≤1.25MPa | | |
| Size | 855*340*575mm | | |
| Pairing Packages | 40L booster tank, VBA40A booster valve, 3 parts in two | | |
| Medium: Various gas media | | | |

CARBON STEEL VERTICAL AIR RECEIVER



YC-5L-CSV

| | | | |
|--------------------|---|--------------|------------------|
| Material | Q235B | Volume | 5L/1.4Gallons |
| Outlet Size | G1/4 (*6) | Size | 300*200*350mm |
| Thickness | 2mm | Max Pressure | ≤1.25MPa (12Bar) |
| Surface Technology | Powder Coating | | |
| Service Life | 7Years | | |
| Usage: | Mechanical equipment, automation and other industries of air or inert gas storage | | |



YC-5L-Reservoir-CSV

| | | | |
|--------------------|---|--------------|------------------|
| Material | Q235B | Volume | 5L/1.4Gallons |
| Outlet Size | G1/4 (*6) | Size | 300*160*350mm |
| Thickness | 2mm | Max Pressure | ≤1.25MPa (12Bar) |
| Surface Technology | Powder Coating | | |
| Service Life | 7Years | | |
| Usage: | Mechanical equipment, automation and other industries of air or inert gas storage | | |



YC-10L-CSV

| | | | |
|--------------------|---|--------------|------------------|
| Material | Q235B | Volume | 10L/2.7Gallons |
| Outlet Size | G1/2 (*4) G1/4 (*1) | Size | 520*180*460mm |
| Thickness | 2mm | Max Pressure | ≤1.25MPa (12Bar) |
| Surface Technology | Powder Coating | | |
| Service Life | 7Years | | |
| Usage: | Mechanical equipment, automation and other industries of air or inert gas storage | | |



YC-20L-CSV

| | | | |
|--------------------|---|--------------|------------------|
| Material | Q235B | Volume | 20L/5.3Gallons |
| Outlet Size | G1/2 (*4) G1/4 (*1) | Size | 462*280*350mm |
| Thickness | 2.5mm | Max Pressure | ≤1.25MPa (12Bar) |
| Surface Technology | Powder Coating | | |
| Service Life | 7Years | | |
| Usage: | Mechanical equipment, automation and other industries of air or inert gas storage | | |



YC-25L-RESERVOIR-CSV

| | | | |
|--------------------|---|--------------|-----------------|
| Material | Q235B | Volume | 25L/6.6Gallons |
| Outlet Size | G1/2 (*5) | Size | 580*240*500mm |
| Thickness | 2mm | Max Pressure | ≤1.0MPa (10Bar) |
| Surface Technology | Powder Coating | | |
| Service Life | 7Years | | |
| Usage: | Mechanical equipment, automation and other industries of air or inert gas storage | | |

CARBON STEEL VERTICAL AIR RECEIVER



YC-30L-CSV

| | | | |
|--------------------|---|--------------|-------------------|
| Material | Q235B | Volume | 30L/8Gallons |
| Outlet Size | G1/2 (*4) G1/4 (*1) | Size | 600*280*500mm |
| Thickness | 2.5mm | Max Pressure | ≤0.84MPa (8.4Bar) |
| Surface Technology | Powder Coating | | |
| Service Life | 7Years | | |
| Usage: | Mechanical equipment, automation and other industries of air or inert gas storage | | |



YC-40L-CSV

| | | | |
|--------------------|---|--------------|--------------------|
| Material | Q235B | Volume | 40L/10.6Gallons |
| Outlet Size | G1/2 (*4) G1/4 (*1) | Size | 700*300*600mm |
| Thickness | 3mm | Max Pressure | ≤1.05MPa (10.5Bar) |
| Surface Technology | Powder Coating | | |
| Service Life | 7Years | | |
| Usage: | Mechanical equipment, automation and other industries of air or inert gas storage | | |



YC-50L-A-CSV

| | | | |
|--------------------|---|--------------|-------------------|
| Material | Q235B | Volume | 50L/13.3Gallons |
| Outlet Size | G1/2 (*4) G1/4 (*1) | Size | 812*300*700mm |
| Thickness | 3mm | Max Pressure | ≤0.84MPa (8.4Bar) |
| Surface Technology | Powder Coating | | |
| Service Life | 7Years | | |
| Usage: | Mechanical equipment, automation and other industries of air or inert gas storage | | |



YC-50L-B-CSV

| | | | |
|--------------------|---|--------------|------------------|
| Material | Q235B | Volume | 50L/13.3Gallons |
| Outlet Size | G1/2 (*4) G1/4 (*1) | Size | 650*320*762mm |
| Thickness | 3mm | Max Pressure | ≤1.25MPa (12Bar) |
| Surface Technology | Powder Coating | | |
| Service Life | 7Years | | |
| Usage: | Mechanical equipment, automation and other industries of air or inert gas storage | | |



YC-60L-CSV

| | | | |
|--------------------|---|--------------|-------------------|
| Material | Q235B | Volume | 60L/15.9Gallons |
| Outlet Size | G1/2 (*5) G1 (*1) | Size | 962*300*850mm |
| Thickness | 3mm | Max Pressure | ≤0.84MPa (8.4Bar) |
| Surface Technology | Powder Coating | | |
| Service Life | 7Years | | |
| Usage: | Mechanical equipment, automation and other industries of air or inert gas storage | | |

CARBON STEEL VERTICAL AIR RECEIVER



| YC-80L-CSV | | | |
|---|--------------------|--------------|-------------------|
| Material | Q235B | Volume | 80L/21.2Gallons |
| Outlet Size | G1/2(*5) G2(*1) | Size | 782*400*650mm |
| Thickness | 3.5mm | Max Pressure | ≤0.84MPa (8.4Bar) |
| Surface Technology | Powder Coating | | |
| Service Life | 7Years | | |
| Usage: Mechanical equipment, automation and other industries of air or inert gas storage | | | |



| YC-100L-A-CSV | | | |
|---|------------------------------|--------------|-------------------|
| Material | Q235B | Volume | 100L/26.5Gallons |
| Outlet Size | G1/4 (*2) G1(*2) G3/4(*1) | Size | 1400*350*1240mm |
| Thickness | 3mm | Max Pressure | ≤0.84MPa (8.4Bar) |
| Surface Technology | Powder Coating | | |
| Service Life | 7Years | | |
| Usage: Mechanical equipment, automation and other industries of air or inert gas storage | | | |



| YC-100L-B-CSV | | | |
|---|---------------------|--------------|-------------------|
| Material | Q235B | Volume | 100L/26.5Gallons |
| Outlet Size | G1/2(*5) G1 (*1) | Size | 912*400*800mm |
| Thickness | 3mm | Max Pressure | ≤0.84MPa (8.4Bar) |
| Surface Technology | Powder Coating | | |
| Service Life | 7Years | | |
| Usage: Mechanical equipment, automation and other industries of air or inert gas storage | | | |



| YC-300L-GREY-CSV | | | |
|---|----------------|---------------|----------------------------------|
| Material | Q235B | Volume | 300L/79.2Gallons |
| Design temperature | 150°C | Size | Diameter: 0.55m Height: 1.55m |
| Thickness | 3.5mm | Work Pressure | 8Bar |
| Surface Technology | Powder Coating | | |
| Import And Export Caliber | DN40 | | |
| Usage: Mechanical equipment, automation and other industries of air or inert gas storage | | | |

CARBON STEEL VERTICAL AIR RECEIVER

| Images | Model | Material | Capacity (L) | Thickness (mm) | In/Out Let Dia. | Size (mm) | Pressure (Bar) | Design Temperature | Service Life |
|-----------------------|-----------------------|----------|-----------------------|----------------|----------------------|-----------|----------------|--------------------|--------------|
| <p>Threaded holes</p> | 300L | Q235B | 300L 79.2Gallons | 3 | DN25 | 490*1750 | 8 | 7year | 150°C |
| | | | | 3 | DN25 | 550*1525 | 10 | | |
| | 600L | | 600L 158.5Gallons | 3 | DN40 | 650*2050 | 8 | | |
| | | | | 3 | DN40 | 650*2050 | 10 | | |
| | | | 1000L 264.1Gallons | 3 | DN40 | 780*2140 | 8 | | |
| | | | | 3 | DN40 | 800*2140 | | | |
| | 2000L 528.3Gallons | | 2000L 528.3Gallons | 3.5 | DN40 | 780*2140 | 10 | | |
| | | | | 3.5 | DN40 | 800*2140 | | | |
| | | | 2000L 528.3Gallons | 3.5 | DN20 DN15 DN40 | 780*2080 | | | |
| | | | | 4 | DN50 | 980*2750 | | | |
| <p>Flange hole</p> | 300L | Q235B | 300L 79.2Gallons | 3 | DN50 | 490*1750 | 8 | 7year | 150°C |
| | | | | 3 | DN50 | 550*1525 | 10 | | |
| | 600L | | 600L 158.5Gallons | 3 | DN65 | 650*2050 | 8 | | |
| | | | | 3 | DN65 | 650*2050 | 10 | | |
| | 1000L 264.1Gallons | | 1000L 264.1Gallons | 3 | DN65 | 780*2140 | 8 | | |
| | | | | 3 | DN65 | 800*2140 | | | |
| | | | | 3.5 | DN65 | 780*2140 | 10 | | |
| | | | | 3.5 | DN65 | 800*2140 | | | |
| | 2000L 528.3Gallons | | 2000L 528.3Gallons | 4 | DN80 | 980*2750 | 8 | | |
| | | | | 4.5 | DN80 | 980*2750 | 10 | | |
| | 3000L 729.5Gallons | | 3000L 729.5Gallons | 4.5 | DN80 | 1200*2870 | 8 | | |
| | | | | 5.5 | DN80 | 1200*2870 | 10 | | |

STAINLESS STEEL AIR STORAGE TANK (MIRROR)



YC-0.1L-SSH

| | | | |
|---|---------------------|-----------------------|-----------|
| Material | 304 Stainless Steel | | |
| Volume | 0.1L/0.02Gallons | Interface Size | G1/4 (*2) |
| Size | 140*38mm | Thickness | 2mm |
| Max Pressure | ≤1.25MPa (12Bar) | Installation Aperture | / |
| Connection Size | / | | |
| Usage: Mechanical equipment, automation and other industries of air or inert gas storage | | | |



YC-0.2L-SSH

| | | | |
|---|---------------------|-----------------------|-----------|
| Material | 304 Stainless Steel | | |
| Volume | 0.2L/0.05Gallons | Interface Size | G1/4 (*2) |
| Size | 150*51mm | Thickness | 2mm |
| Max Pressure | ≤1.25MPa (12Bar) | Installation Aperture | Φ6 |
| Connection Size | 67mm | | |
| Usage: Mechanical equipment, automation and other industries of air or inert gas storage | | | |



YC-0.3L-SSH

| | | | |
|---|---------------------|-----------------------|-----------|
| Material | 304 Stainless Steel | | |
| Volume | 0.3L/0.07Gallons | Interface Size | G1/8 (*2) |
| Size | 160*57*71mm | Thickness | 2mm |
| Max Pressure | ≤1.25MPa (12Bar) | Installation Aperture | Φ6 |
| Connection Size | 60mm | | |
| Usage: Mechanical equipment, automation and other industries of air or inert gas storage | | | |



YC-0.5L-G1/8-SSH

| | | | |
|---|---------------------|-----------------------|-----------|
| Material | 304 Stainless Steel | | |
| Volume | 0.5L/0.13Gallons | Interface Size | G1/8 (*2) |
| Size | 173*80*98mm | Thickness | 1.5mm |
| Max Pressure | ≤1.25MPa (12Bar) | Installation Aperture | Φ9 |
| Connection Size | 80mm | | |
| Usage: Mechanical equipment, automation and other industries of air or inert gas storage | | | |

STAINLESS STEEL AIR STORAGE TANK (MIRROR)



YC-0.5L-G1/4-SSH

| | | | |
|---|---------------------|-----------------------|-----------|
| Material | 304 Stainless Steel | | |
| Volume | 0.5L/0.13Gallons | Interface Size | G1/4 (*2) |
| Size | 156*76.5*79mm | Thickness | 1.5mm |
| Max Pressure | ≤1.25MPa (12Bar) | Installation Aperture | Φ6 |
| Connection Size | 80mm | | |
| Usage: Mechanical equipment, automation and other industries of air or inert gas storage | | | |



YC-0.8L-G1/8-SSH

| | | | |
|---|---------------------|-----------------------|-----------|
| Material | 304 Stainless Steel | | |
| Volume | 0.8L/0.21Gallons | Interface Size | G1/8 (*2) |
| Size | 225*76*98mm | Thickness | 1.5mm |
| Max Pressure | ≤1.25MPa (12Bar) | Installation Aperture | Φ6 |
| Connection Size | 80mm | | |
| Usage: Mechanical equipment, automation and other industries of air or inert gas storage | | | |



YC-0.8L-G1/4-SSH

| | | | |
|---|---------------------|-----------------------|-----------|
| Material | 304 Stainless Steel | | |
| Volume | 0.8L/0.21Gallons | Interface Size | G1/4 (*2) |
| Size | 215*76*98mm | Thickness | 1.5mm |
| Max Pressure | ≤1.25MPa (12Bar) | Installation Aperture | Φ9 |
| Connection Size | 80mm | | |
| Usage: Mechanical equipment, automation and other industries of air or inert gas storage | | | |



YC-1L-2 PORTS-SSH

| | | | |
|---|---------------------|-----------------------|-----------|
| Material | 304 Stainless Steel | | |
| Volume | 1L/0.26Gallons | Interface Size | G1/4 (*2) |
| Size | 176*100*105mm | Thickness | 2mm |
| Max Pressure | ≤1.25MPa (12Bar) | Installation Aperture | Φ10 |
| Connection Size | 130mm | | |
| Usage: Mechanical equipment, automation and other industries of air or inert gas storage | | | |

STAINLESS STEEL AIR STORAGE TANK (MIRROR)



YC-1L-3PORTS-SSH

| | | | |
|---|---------------------|-----------------------|-----------|
| Material | 304 Stainless Steel | | |
| Volume | 1L/0.26Gallons | Interface Size | G1/4 (*3) |
| Size | 170*100*125mm | Thickness | 2mm |
| Max Pressure | ≤1.25MPa (12Bar) | Installation Aperture | Φ10 |
| Connection Size | 115mm | | |
| Usage: Mechanical equipment, automation and other industries of air or inert gas storage | | | |



YC-2L-G1/4-SSH

| | | | |
|---|---------------------|-----------------------|-----------|
| Material | 304 Stainless Steel | | |
| Volume | 2L/0.52Gallons | Interface Size | G1/4 (*4) |
| Size | 230*108*125mm | Thickness | 2mm |
| Max Pressure | ≤1.25MPa (12Bar) | Installation Aperture | Φ10 |
| Connection Size | 130mm | | |
| Usage: Mechanical equipment, automation and other industries of air or inert gas storage | | | |



YC-2L-G1/2-SSH

| | | | |
|---|---------------------|-----------------------|-----------|
| Material | 304 Stainless Steel | | |
| Volume | 2L/0.52Gallons | Interface Size | G1/2 (*4) |
| Size | 250*108*125mm | Thickness | 2mm |
| Max Pressure | ≤1.25MPa (12Bar) | Installation Aperture | Φ10 |
| Connection Size | 110mm | | |
| Usage: Mechanical equipment, automation and other industries of air or inert gas storage | | | |



YC-3L-SSH

| | | | |
|---|---------------------|-----------------------|-----------|
| Material | 304 Stainless Steel | | |
| Volume | 3L/0.79Gallons | Interface Size | G1/4 (*4) |
| Size | 230*133*136mm | Thickness | 2mm |
| Max Pressure | ≤1.25MPa (12Bar) | Installation Aperture | Φ9 |
| Connection Size | 130mm | | |
| Usage: Mechanical equipment, automation and other industries of air or inert gas storage | | | |

STAINLESS STEEL AIR STORAGE TANK (MIRROR)



YC-4L-SSH

| | | | |
|---|---------------------|-----------------------|------------------------|
| Material | 304 Stainless Steel | | |
| Volume | 4L/1.06Gallons | Interface Size | G1/4 (*1) G1/2 (*3) |
| Size | 225*160*230mm | Thickness | 2mm |
| Max Pressure | ≤1.25MPa (12Bar) | Installation Aperture | Φ9 |
| Connection Size | 85*95mm | | |
| Usage: Mechanical equipment, automation and other industries of air or inert gas storage | | | |



YC-5L-SSH

| | | | |
|---|---------------------|-----------------------|------------------------|
| Material | 304 Stainless Steel | | |
| Volume | 5L/1.3Gallons | Interface Size | G1/4 (*3) G1/2 (*2) |
| Size | 280*159*215mm | Thickness | 2mm |
| Max Pressure | ≤1.25MPa (12Bar) | Installation Aperture | Φ9 |
| Connection Size | 130*100mm | | |
| Usage: Mechanical equipment, automation and other industries of air or inert gas storage | | | |



YC-10L-SSH

| | | | |
|---|---------------------|-----------------------|------------------------|
| Material | 304 Stainless Steel | | |
| Volume | 10L/2.6Gallons | Interface Size | G1/4 (*1) G1/2 (*4) |
| Size | 480*159*240mm | Thickness | 2mm |
| Max Pressure | ≤1.25MPa (12Bar) | Installation Aperture | Φ10 |
| Connection size | 220*100mm | | |
| Usage: Mechanical equipment, automation and other industries of air or inert gas storage | | | |



YC-20L-SSH

| | | | |
|---|---------------------|-----------------------|------------------------|
| Material | 304 Stainless Steel | | |
| Volume | 20L/5.3Gallons | Interface Size | G1/4 (*1) G1/2 (*4) |
| Size | 500*219*290mm | Thickness | 2.5mm |
| Max Pressure | ≤1.25MPa (12Bar) | Installation Aperture | Φ10 |
| Connection Size | 220*130mm | | |
| Usage: Mechanical equipment, automation and other industries of air or inert gas storage | | | |

STAINLESS STEEL AIR STORAGE TANK (MIRROR)



YC-30L-SSH

| | | | |
|---|---------------------|-----------------------|------------------------|
| Material | 304 Stainless Steel | | |
| Volume | 30L/7.9Gallons | Interface Size | G1/4 (*1) G1/2 (*5) |
| Size | 530*273*350mm | Thickness | 2.5mm |
| Max Pressure | ≤1.25MPa (12Bar) | Installation Aperture | Φ9 |
| Connection Size | 240*200mm | | |
| Usage: Mechanical equipment, automation and other industries of air or inert gas storage | | | |



YC-40L-SSH

| | | | |
|---|---------------------|-----------------------|------------------------|
| Material | 304 Stainless Steel | | |
| Volume | 40L/10.6Gallons | Interface Size | G1/4 (*1) G1/2 (*5) |
| Size | 690*273*350mm | Thickness | 2.5mm |
| Max Pressure | ≤1.25MPa (12Bar) | Installation Aperture | Φ9 |
| Connection Size | 360*200mm | | |
| Usage: Mechanical equipment, automation and other industries of air or inert gas storage | | | |



YC-50L-SSH

| | | | |
|---|---------------------|-----------------------|------------------------|
| Material | 304 Stainless Steel | | |
| Volume | 50L/13.2Gallons | Interface Size | G1/4 (*1) G1/2 (*4) |
| Size | 620*325*400mm | Thickness | 2.5mm |
| Max Pressure | ≤1.25MPa (12Bar) | Installation Aperture | Φ9 |
| Connection Size | 210*180mm | | |
| Usage: Mechanical equipment, automation and other industries of air or inert gas storage | | | |



YC-60L-SSH

| | | | |
|---|---------------------|-----------------------|------------------------|
| Material | 304 Stainless Steel | | |
| Volume | 60L/15.8Gallons | Interface Size | G1/4 (*1) G1/2 (*6) |
| Size | 760*325*420mm | Thickness | 3mm |
| Max Pressure | ≤1.25MPa (12Bar) | Installation Aperture | Φ9 |
| Connection Size | 390*240mm | | |
| Usage: Mechanical equipment, automation and other industries of air or inert gas storage | | | |

STAINLESS STEEL AIR STORAGE TANK (MIRROR)



YC-5L-HEAVY PRESSURE-SSH

| | | | |
|---|---------------------|-----------------------|------------------------|
| Material | 304 Stainless Steel | | |
| Volume | 5L/1.3Gallons | Interface Size | G1/4 (*3) G1/2 (*2) |
| Size | 290*159*249mm | Thickness | 3mm |
| Max Pressure | ≤3.0MPa (30Bar) | Installation Aperture | Φ9 |
| Connection Size | 130*80mm | | |
| Usage: Mechanical equipment, automation and other industries of air or inert gas storage | | | |



YC-10L-HEAVY PRESSURE-SSH

| | | | |
|---|---------------------|-----------------------|------------------------|
| Material | 304 Stainless Steel | | |
| Volume | 10L/2.6Gallons | Interface Size | G1/4 (*1) G1/2 (*4) |
| Size | 530*159*249mm | Thickness | 3mm |
| Max Pressure | ≤3.0MPa (30Bar) | Installation Aperture | Φ9 |
| Connection Size | 340*80mm | | |
| Usage: Mechanical equipment, automation and other industries of air or inert gas storage | | | |



YC-20L-HEAVY PRESSURE-SSH

| | | | |
|---|---------------------|-----------------------|------------------------|
| Material | 304 Stainless Steel | | |
| Volume | 20L/5.3Gallons | Interface Size | G1/4 (*1) G1/2 (*4) |
| Size | 626*219*289mm | Thickness | 4mm |
| Max Pressure | ≤3.0MPa (30Bar) | Installation Aperture | Φ9 |
| Connection Size | 280*160mm | | |
| Usage: Mechanical equipment, automation and other industries of air or inert gas storage | | | |

STAINLESS STEEL AIR STORAGE TANK (MIRROR)



YC-5L-SSV

| | | | |
|---|---------------------|-----------------------|------------------------|
| Material | 304 Stainless Steel | | |
| Volume | 5L/1.3Gallons | Interface Size | G1/4 (*1) G1/2 (*3) |
| Size | 360*159*300mm | Thickness | 2.5mm |
| Max Pressure | ≤1.25MPa (12Bar) | Installation Aperture | / |
| Connection Size | / | | |
| Usage: Mechanical equipment, automation and other industries of air or inert gas storage | | | |



YC-10L-SSV

| | | | |
|---|---------------------|-----------------------|------------------------|
| Material | 304 Stainless Steel | | |
| Volume | 10L/2.6Gallons | Interface Size | G1/4 (*1) G1/2 (*4) |
| Size | 410*219*345mm | Thickness | 2.5mm |
| Max Pressure | ≤1.25MPa (12Bar) | Installation Aperture | / |
| Connection size | / | | |
| Usage: Mechanical equipment, automation and other industries of air or inert gas storage | | | |



YC-10L-HIGH-SSV

| | | | |
|---|---------------------|-----------------------|------------------------------|
| Material | 304 Stainless Steel | | |
| Volume | 10L/2.6Gallons | Interface Size | G1/2(*1) G3/8(*2) G1 (*2) |
| Size | 675*160*510mm | Thickness | 2.5mm |
| Max Pressure | ≤1.25MPa (12Bar) | Installation Aperture | / |
| Connection Size | / | | |
| Usage: Mechanical equipment, automation and other industries of air or inert gas storage | | | |



YC-20L-SSV

| | | | |
|---|---------------------|-----------------------|------------------------|
| Material | 304 Stainless Steel | | |
| Volume | 20L/5.3Gallons | Interface Size | G1/4 (*1) G1/2 (*5) |
| Size | 545*260*430mm | Thickness | 2.5mm |
| Max Pressure | ≤1.25MPa (12Bar) | Installation Aperture | / |
| Connection Size | / | | |
| Usage: Mechanical equipment, automation and other industries of air or inert gas storage | | | |

STAINLESS STEEL AIR STORAGE TANK MATTE



YC-5L-A-SSHM

| | | | |
|---|---------------------|-----------------------|------------------------|
| Material | 304 Stainless Steel | | |
| Volume | 5L/1.3Gallons | Interface Size | G1/4 (*1) G1/2 (*2) |
| Size | 290*160*215mm | Thickness | 2mm |
| Max Pressure | ≤1.25MPa (12Bar) | Installation Aperture | Φ9 |
| Connection Size | 130*100mm | | |
| Usage: Mechanical equipment, automation and other industries of air or inert gas storage | | | |



YC-5L-B-SSHM

| | | | |
|---|---------------------|-----------------------|------------------------|
| Material | 304 Stainless Steel | | |
| Volume | 5L/1.3Gallons | Interface Size | G1/4 (*3) G1/2 (*2) |
| Size | 290*160*225mm | Thickness | 2mm |
| Max Pressure | ≤1.25MPa (12Bar) | Installation Aperture | Φ9 |
| Connection Size | 130*100mm | | |
| Usage: Mechanical equipment, automation and other industries of air or inert gas storage | | | |



YC-10L-A-SSHM

| | | | |
|---|---------------------|-----------------------|------------------------|
| Material | 304 Stainless Steel | | |
| Volume | 10L/2.6Gallons | Interface Size | G1/4 (*1) G1/2 (*2) |
| Size | 430*180*235mm | Thickness | 2mm |
| Max Pressure | ≤1.25MPa (12Bar) | Installation Aperture | Φ9 |
| Connection Size | 220*100mm | | |
| Usage: Mechanical equipment, automation and other industries of air or inert gas storage | | | |



YC-10L-B-SSHM

| | | | |
|---|---------------------|-----------------------|------------------------|
| Material | 304 Stainless Steel | | |
| Volume | 10L/2.6Gallons | Interface Size | G1/4 (*1) G1/2 (*4) |
| Size | 430*180*245mm | Thickness | 2mm |
| Max Pressure | ≤1.25MPa (12Bar) | Installation Aperture | Φ9 |
| Connection Size | 220*100mm | | |
| Usage: Mechanical equipment, automation and other industries of air or inert gas storage | | | |



YC-12L-SSHM

| | | | |
|---|---------------------|-----------------------|-----------|
| Material | 304 Stainless Steel | | |
| Volume | 12L/3.2Gallons | Interface Size | G1/2 (*3) |
| Size | 400*200*270mm | Thickness | 2mm |
| Max Pressure | ≤1.25MPa (12Bar) | Installation Aperture | Φ10 |
| Connection Size | 400*140mm | | |
| Usage: Mechanical equipment, automation and other industries of air or inert gas storage | | | |

STAINLESS STEEL AIR STORAGE TANK MATTE



YC-20L-A-SSHM

| | | | |
|---|---------------------|-----------------------|------------------------|
| Material | 304 Stainless Steel | | |
| Volume | 20L/5.3Gallons | Interface Size | G1/4 (*1) G1/2 (*2) |
| Size | 500*236*296mm | Thickness | 2.5mm |
| Max Pressure | ≤1.25MPa (12Bar) | Installation Aperture | Φ9 |
| Connection Size | 280*172mm | | |
| Usage: Mechanical equipment, automation and other industries of air or inert gas storage | | | |



YC-20L-B-SSHM

| | | | |
|---|---------------------|-----------------------|------------------------|
| Material | 304 Stainless Steel | | |
| Volume | 20L/5.3Gallons | Interface Size | G1/4 (*1) G1/2 (*4) |
| Size | 500*236*306mm | Thickness | 2.5mm |
| Max Pressure | ≤1.25MPa (12Bar) | Installation Aperture | Φ9 |
| Connection Size | 280*172mm | | |
| Usage: Mechanical equipment, automation and other industries of air or inert gas storage | | | |



YC-25L-SSHM

| | | | |
|---|---------------------|-----------------------|------------------------|
| Material | 304 Stainless Steel | | |
| Volume | 25L/6.6Gallons | Interface Size | G1/4 (*2) G1/2 (*4) |
| Size | 580*236*306mm | Thickness | 2.5mm |
| Max Pressure | ≤1.25MPa (12Bar) | Installation Aperture | Φ9 |
| Connection Size | 330*140mm | | |
| Usage: Mechanical equipment, automation and other industries of air or inert gas storage | | | |



YC-30L-SSHM

| | | | |
|---|---------------------|-----------------------|------------------------|
| Material | 304 Stainless Steel | | |
| Volume | 30L/7.9Gallons | Interface Size | G1/4 (*1) G1/2 (*4) |
| Size | 460*320*365mm | Thickness | 2.5mm |
| Max Pressure | ≤1.25MPa (12Bar) | Installation Aperture | Φ9 |
| Connection Size | 196*240mm | | |
| Usage: Mechanical equipment, automation and other industries of air or inert gas storage | | | |

STAINLESS STEEL AIR STORAGE TANK MATTE



YC-5L-SSVM

| | | | |
|---|---------------------|-----------------------|------------------------|
| Material | 304 Stainless Steel | | |
| Volume | 5L/1.3Gallons | Interface Size | G1/4 (*1) G1/2 (*2) |
| Size | 350*160*290mm | Thickness | 2mm |
| Max Pressure | ≤1.25MPa (12Bar) | Installation Aperture | Φ9 |
| Connection size | 155*155mm | | |
| Usage: Mechanical equipment, automation and other industries of air or inert gas storage | | | |



YC-30L-SSVM

| | | | |
|---|---------------------|-----------------------|-----------|
| Material | 304 Stainless Steel | | |
| Volume | 30L/7.9Gallons | Interface Size | G1/2 (*4) |
| Size | 500*280*600mm | Thickness | / |
| Max Pressure | ≤0.8MPa (8Bar) | Installation Aperture | / |
| Connection size | / | | |
| Usage: Mechanical equipment, automation and other industries of air or inert gas storage | | | |



YC-50L-SSVM

| | | | |
|---|---------------------|-----------------------|-----------------------------------|
| Material | 304 Stainless Steel | | |
| Volume | 50L/13.3Gallons | Interface Size | G1 (*2) G1/2 (*1) M20*1.5 (*1) |
| Size | 875*335*720mm | Thickness | 3mm |
| Max Pressure | ≤0.8MPa (8Bar) | Installation Aperture | / |
| Connection Size | / | | |
| Usage: Mechanical equipment, automation and other industries of air or inert gas storage | | | |





YC-30L-SSVM

| | | | |
|---|---------------------|-----------------------|-----------------------------------|
| Material | 304 Stainless Steel | | |
| Volume | 50L/13.3Gallons | Interface Size | G1 (*2) G1/2 (*1) M20*1.5 (*1) |
| Size | 910*330*740mm | Thickness | / |
| Max Pressure | ≤1.05MPa (10.5Bar) | Installation Aperture | / |
| Connection size | / | | |
| Usage: Mechanical equipment, automation and other industries of air or inert gas storage | | | |



STAINLESS STEEL AIR STORAGE TANK MATTE

Stainless steel vertical frosted air storage tank [ASME]

| Images | Material | Model | Capacity (L) | Thickness (mm) | In/Outlet Dia. | Size (mm) | Pressure (Bar) | Design Temperature | Service Life |
|---|----------|---------|-----------------------|----------------|--|-----------|----------------|--------------------|--------------|
|   | S304 | 100L | 100L 26.5Gallons | / | G1/2 (*3) G1 (*2) | 400*1196 | 8 | 110°C | 12year |
| | | | | 3 | G1/2 (*3) G1 (*2) | 400*1196 | 10 | | |
| | | 200L | 200L 52.8Gallons | / | G1/2 (*3) G1 (*2) | 550*1312 | 8 | | |
| | | | | 3 | G1/2 (*3) G1 (*2) | 550*1312 | 10 | | |
| | | 300L | 300L 79.2Gallons | 3 | G1/2 (*2) G1-1/2 (*2) G3*4 (*1) | 550*1612 | 8 | | |
| | | | | 3 | G1/2 (*2) G1-1/2 (*2) G3*4 (*1) | 550*1612 | 10 | | |
| | | 600L | 600L 158.5Gallons | 3 | G1/2 (*2) G1-1/2 (*2) G3*4 (*1) | 650*2134 | 8 | | |
| | | | | 3.5 | G1/2 (*2) G1-1/2 (*2) G3*4 (*1) | 650*2135 | 10 | | |
| | | | | 5 | G1/2 (*2) G1-1/2 (*2) G3*4 (*1) | 650*2136 | 13 | | |
| | | | | / | G1/2 (*2) G1-1/2 (*2) G3*4 (*1) | 650*2136 | 16 | | |
| | | 1Cube | 1000L 264.1Gallons | 3.5 | G1/2 (*2) G1-1/2 (*2) G1 (*1) | 800*2258 | 8 | | |
| | | | | 4.5 | G1/2 (*2) G1-1/2 (*2) G1 (*1) | 800*2260 | 10 | | |
| | | 1.5Cube | 1500L 396.5Gallons | 4 | G2 (*2) G1/2 (*2) G1 (*1) | 1000*2289 | 8 | | |
| | | | | 5 | G2 (*2) G1/2 (*2) G1 (*1) | 1000*2291 | 10 | | |
| | | | | / | G1/2 (*2) G2 (*2) G1 (*1) | 1000*2291 | 13 | | |
| | | 2Cube | 2000L 528.3Gallons | 4 | G1/2 (*2) G2 (*2) 136*118mm(plane) | 1000*2838 | 8 | | |

STAINLESS STEEL AIR STORAGE TANK MATTE

Stainless steel vertical frosted air storage tank [ASME]

| Images | Material | Model | Capacity (L) | Thickness (mm) | In/Outlet Dia. | Size (mm) | Pressure (Bar) | Design Temperature | Service Life |
|---|----------|---------|--|----------------|--|-----------|----------------|--------------------|--------------|
|   | S304 | 300L | 300L 79.2Gallons | 4 | G1/2 (*2) G3/4 (*1) G2 (*2) | 550*1614 | 13 | 110°C | 12year |
| | | | | / | G1/2 (*2) G3/4 (*1) G2 (*2) | 550*1614 | 16 | | |
| | | 1Cube | 1000L 264.1Gallons | / | G1/2 (*2) G1 (*1) G2-1/2 (*2) | 800*2260 | 13 | | |
| | | | | / | G1/2 (*2) G1 (*1) G2-1/2 (*2) | 800*2260 | 16 | | |
| | | 1.5Cube | 1500L 396.5Gallons | / | G1/2 (*2) G1 (*1) G2-1/2 (*2) | 1000*2289 | 13 | | |
| | | | | / | G1/2 (*2) G1 (*1) G2-1/2 (*2) | 1000*2289 | 16 | | |
| | | 2Cube | 2000L 528.3Gallons | / | G1/2 (*2) G1 (*1) G3 (*2) 136*118mm(plane) | 1000*2810 | 13 | | |
| | | | | / | G1/2 (*2) G1 (*1) G3 (*2) 136*118mm(plane) | 1000*2810 | 16 | | |
| | | 3Cube | 3000L 792.5Gallons | 5 | G3/4 (*1) G1-1/2 (*1) G1/2 (*1) G3 (*2) 136*118mm(plane) | 1200*2952 | 8 | | |
| | | | | 6 | G3/4 (*1) G1-1/2 (*1) G1/2 (*1) G3 (*2) 136*118mm(plane) | 1200*2954 | 10 | | |
| | | | | 8 | G3/4 (*1) G1-1/2 (*1) G1/2 (*1) G3 (*2) 136*118mm(plane) | 1200*2958 | 13 | | |
| | | / | G3/4 (*1) G1-1/2 (*1) G1/2 (*1) G3 (*2) 136*118mm(plane) | 1200*2958 | 16 | | | | |
| | | 4Cube | 4000L 1056.7Gallons | 6 | G3/4 (*1) G1-1/2 (*1) G1/2 (*1) G4 (*2) 300*400mm(plane) | 1400*3074 | 8 | | |
| | | | | 7 | G3/4 (*1) G1-1/2 (*1) G1/2 (*1) G4 (*2) 300*400mm(plane) | 1400*3074 | 10 | | |
| | | | | 9 | G3/4 (*1) G1-1/2 (*1) G1/2 (*1) G4 (*2) 300*400mm(plane) | 1400*3078 | 13 | | |
| | | | | / | G3/4 (*1) G1-1/2 (*1) G1/2 (*1) G4 (*2) 300*400mm(plane) | 1400*3078 | 16 | | |
| | | 5Cube | 5000L 1320.8Gallons | 6 | G3/4 (*1) G1/2 (*1) G2 (*1) G4 (*2) 300*400mm(plane) | 1400*3752 | 8 | | |
| | | | | 7 | G3/4 (*1) G1/2 (*1) G2 (*1) G4 (*2) 300*400mm(plane) | 1400*3754 | 10 | | |
| | | | | / | G3/4 (*1) G1/2 (*1) G2 (*1) G4 (*2) 300*400mm(plane) | 1400*3754 | 13 | | |
| | | | | / | G3/4 (*1) G1/2 (*1) G2 (*1) G4 (*2) 300*400mm(plane) | 1400*3754 | 16 | | |
| | | 6Cube | 6000L 1585.1Gallons | 6 | G3/4 (*1) G2 (*1) G1/2 (*1) G4 (*2) 300*400mm(plane) | 1400*4362 | 8 | | |
| | | | | 7 | G3/4 (*1) G2 (*1) G1/2 (*1) G4 (*2) 300*400mm(plane) | 1400*4364 | 10 | | |
| | | | | / | G3/4 (*1) G2 (*1) G1/2 (*1) G4 (*2) 300*400mm(plane) | 1400*4364 | 13 | | |
| | | | | / | G3/4 (*1) G2 (*1) G1/2 (*1) G4 (*2) 300*400mm(plane) | 1400*4364 | 16 | | |
| | | 8Cube | 8000L 2113.4Gallons | 7 | G2 (*1) G1 (*1) G1/2 (*1) G6 (*2) 300*400mm(plane) | 1600*4466 | 8 | | |
| | | | | 8 | G2 (*1) G1 (*1) G1/2 (*1) G6 (*2) 300*400mm(plane) | 1600*4466 | 10 | | |

ALUMINUM ALLOY AIR STORAGE TANK



YC-5L-A-AH

| | | | |
|-----------------|----------------|-----------------------|------------------------|
| Material | Aluminum Alloy | | |
| Volume | 5L/1.3Gallons | Interface Size | G1/4 (*1) G1/2 (*2) |
| Size | 255*155*195mm | Thickness | 2.0mm |
| Max Pressure | ≤0.8MPa (8Bar) | Installation Aperture | Φ8 |
| Connection Size | 30*30mm | | |



YC-5L-B-AH

| | | | |
|-----------------|----------------|-----------------------|-----------|
| Material | Aluminum Alloy | | |
| Volume | 5L/1.3Gallons | Interface Size | G1/4 (*6) |
| Size | 260*160*190mm | Thickness | 2.0mm |
| Max Pressure | ≤0.8MPa (8Bar) | Installation Aperture | Φ10 |
| Connection Size | 110*80mm | | |



YC-6L-LEFT-AH

| | | | |
|-----------------|----------------|-----------------------|------------------------|
| Material | Aluminum Alloy | | |
| Volume | 6L/1.5Gallons | Interface Size | G1/4 (*2) G3/8 (*1) |
| Size | 320*145*175mm | Thickness | 2.0mm |
| Max Pressure | ≤0.8MPa (8Bar) | Installation Aperture | Φ5 |
| Connection Size | 205*150mm | | |



YC-6L-RIGHT-AH

| | | | |
|-----------------|----------------|-----------------------|------------------------|
| Material | Aluminum Alloy | | |
| Volume | 6L/1.5Gallons | Interface Size | G1/4 (*2) G3/8 (*1) |
| Size | 320*145*175mm | Thickness | 2.0mm |
| Max Pressure | ≤0.8MPa (8Bar) | Installation Aperture | Φ5 |
| Connection Size | 205*150mm | | |



YC-6L-AH

| | | | |
|-----------------|----------------|-----------------------|------------------------|
| Material | Aluminum Alloy | | |
| Volume | 6L/1.5Gallons | Interface Size | G1/4 (*2) G3/8 (*1) |
| Size | 320*150*167mm | Thickness | 2.0mm |
| Max Pressure | ≤0.8MPa (8Bar) | Installation Aperture | Φ5 |
| Connection Size | 203*150mm | | |

ALUMINUM ALLOY AIR STORAGE TANK



YC-12L-AH

| | | | |
|-----------------|----------------|-----------------------|------------------------|
| Material | Aluminum Alloy | | |
| Volume | 12L/3.2Gallons | Interface Size | G1/4 (*1) G1/2 (*3) |
| Size | 320*236*318mm | Thickness | 2.5mm |
| Max Pressure | ≤0.8MPa (8Bar) | Installation Aperture | Φ9 |
| Connection Size | 120*172mm | | |



YC-15L-AH

| | | | |
|-----------------|----------------|-----------------------|------------------------|
| Material | Aluminum Alloy | | |
| Volume | 15L/3.9Gallons | Interface Size | G1/4 (*1) G1/2 (*2) |
| Size | 340*236*313mm | Thickness | 2.5mm |
| Max Pressure | ≤0.8MPa (8Bar) | Installation Aperture | Φ9 |
| Connection Size | 220*150mm | | |



YC-18L-AH

| | | | |
|-----------------|----------------|-----------------------|------------------------|
| Material | Aluminum Alloy | | |
| Volume | 18L/4.7Gallons | Interface Size | G1/4 (*1) G1/2 (*4) |
| Size | 390*236*292mm | Thickness | 2.5mm |
| Max Pressure | ≤0.8MPa (8Bar) | Installation Aperture | Φ9 |
| Connection Size | 180*172mm | | |



YC-24L-AH

| | | | |
|-----------------|----------------|-----------------------|------------------------|
| Material | Aluminum Alloy | | |
| Volume | 24L/6.3Gallons | Interface Size | G1/4 (*1) G1/2 (*4) |
| Size | 500*240*280mm | Thickness | 2.5mm |
| Max Pressure | ≤0.8MPa (8Bar) | Installation Aperture | Φ9 |
| Connection Size | 280*172mm | | |



YC-35L-AH

| | | | |
|-----------------|----------------|-----------------------|------------------------|
| Material | Aluminum Alloy | | |
| Volume | 35L/9.2Gallons | Interface Size | G1/4 (*1) G1/2 (*4) |
| Size | 722*236*275mm | Thickness | 2.5mm |
| Max Pressure | ≤0.8MPa (8Bar) | Installation Aperture | Φ9 |
| Connection Size | 500*172mm | | |

STAINLESS STEEL DEFOAMING BUCKET

Stainless steel defoaming barrels are indispensable and critical equipment in various industries. This series of defoaming barrels is made of 304 high-quality stainless steel, which has corrosion resistance and high temperature resistance. It not only has the characteristics of safety and reliability, efficient defoaming and durability, but also has the advantages of simple operation, diverse specifications and convenient maintenance.



STAINLESS STEEL DEFOAMING BUCKET



YC-5L-SSD

| | | | |
|-----------------|--|-----------------|-----------------|
| Material | Stainless steel | Volume | 5L |
| Outer diameter | 214mm | Inner diameter | 210mm |
| External height | 323mm | Internal height | 160mm |
| Weight | 5.7kg | Thickness | 2mm |
| Cover thickness | 3mm | Size | 307*323mm (W*H) |
| Product Feature | 1、Stainless steel material, anti-corrosion and rust prevention 2、Strong sealing performance 3、Fast suction speed | | |



YC-10L-SSD

| | | | |
|-----------------|--|-----------------|-----------------|
| Material | Stainless steel | Volume | 10L |
| Outer diameter | 245mm | Inner diameter | 241mm |
| External height | 437mm | Internal height | 252mm |
| Weight | 7.1kg | Thickness | 2mm |
| Cover thickness | 3mm | Size | 340*437mm (W*H) |
| Product Feature | 1、Stainless steel material, anti-corrosion and rust prevention 2、Strong sealing performance 3、Fast suction speed | | |



YC-15L-SSD

| | | | |
|-----------------|--|-----------------|-----------------|
| Material | Stainless steel | Volume | 15L |
| Outer diameter | 245mm | Inner diameter | 241mm |
| External height | 507mm | Internal height | 322mm |
| Weight | 8.4kg | Thickness | 2mm |
| Cover thickness | 3mm | Size | 340*507mm (W*H) |
| Product Feature | 1、Stainless steel material, anti-corrosion and rust prevention 2、Strong sealing performance 3、Fast suction speed | | |

STAINLESS STEEL DEFOAMING BUCKET



YC-5L-SSD

| | | | |
|-----------------|--|-----------------|-----------------|
| Material | Stainless steel | Volume | 5L |
| Outer diameter | 214mm | Inner diameter | 210mm |
| External height | 253mm | Internal height | 160mm |
| Weight | 5.5kg | Thickness | 2mm |
| Cover thickness | 3mm | Size | 307*253mm (W*H) |
| Product Feature | 1、Stainless steel material, anti-corrosion and rust prevention 2、Strong sealing performance 3、Fast suction speed | | |



YC-10L-SSD

| | | | |
|-----------------|--|-----------------|-----------------|
| Material | Stainless steel | Volume | 10L |
| Outer diameter | 245mm | Inner diameter | 241mm |
| External height | 367mm | Internal height | 252mm |
| Weight | 6.9kg | Thickness | 2mm |
| Cover thickness | 3mm | Size | 340*367mm (W*H) |
| Product Feature | 1、Stainless steel material, anti-corrosion and rust prevention 2、Strong sealing performance 3、Fast suction speed | | |



YC-15L-SSD

| | | | |
|-----------------|--|-----------------|-----------------|
| Material | Stainless steel | Volume | 15L |
| Outer diameter | 245mm | Inner diameter | 241mm |
| External height | 437mm | Internal height | 322mm |
| Weight | 8.2kg | Thickness | 2mm |
| Cover thickness | 3mm | Size | 340*437mm (W*H) |
| Product Feature | 1、Stainless steel material, anti-corrosion and rust prevention 2、Strong sealing performance 3、Fast suction speed | | |

STAINLESS STEEL DEFOAMING BUCKET



YC-20L-SSD

| | | | |
|-----------------|--|-----------------|-----------------|
| Material | Stainless steel | Volume | 20L |
| Outer diameter | 275mm | Inner diameter | 265mm |
| External height | 465mm | Internal height | 390mm |
| Weight | 19.7kg | Thickness | 4mm |
| Cover thickness | 13mm | Size | 356*465mm (W*H) |
| Usage pressure | ≤4.5kg | | |
| Product Feature | 1、Stainless steel material, anti-corrosion and rust prevention 2、Strong sealing performance 3、Fast suction speed | | |



YC-30L-SSD

| | | | |
|-----------------|--|-----------------|-----------------|
| Material | Stainless steel | Volume | 30L |
| Outer diameter | 325mm | Inner diameter | 313mm |
| External height | 475mm | Internal height | 398mm |
| Weight | 25.95kg | Thickness | 4mm |
| Cover thickness | 15mm | Size | 420*475mm (W*H) |
| Usage pressure | ≤4.5kg | | |
| Product Feature | 1、Stainless steel material, anti-corrosion and rust prevention 2、Strong sealing performance 3、Fast suction speed | | |



YC-50L-SSD

| | | | |
|-----------------|--|-----------------|-----------------|
| Material | Stainless steel | Volume | 50L |
| Outer diameter | 380mm | Inner diameter | 368mm |
| External height | 600mm | Internal height | 528mm |
| Weight | 37.3kg | Thickness | 4mm |
| Cover thickness | 15mm | Size | 435*600mm (W*H) |
| Usage pressure | ≤4.5kg | | |
| Product Feature | 1、Stainless steel material, anti-corrosion and rust prevention 2、Strong sealing performance 3、Fast suction speed | | |

STAINLESS STEEL DEFOAMING BUCKET WITH TRANSPARENT LID



YC-6L-SDT

| | | | |
|-----------------|---|-----------------|-----------|
| Material | Stainless steel | Volume | 6L |
| Outer diameter | 235mm | Inner diameter | 217mm |
| External height | 320mm | Internal height | 186mm |
| Weight | 3kg | Thickness | 1mm |
| Cover thickness | 19mm | Size | 290*320mm |
| Product Feature | 1, Stainless steel material, anti-corrosion and rust prevention 2, Strong sealing performance 3, Fast suction speed | | |



YC-10L-SDT

| | | | |
|-----------------|---|-----------------|-----------|
| Material | Stainless steel | Volume | 10L |
| Outer diameter | 235mm | Inner diameter | 217mm |
| External height | 415mm | Internal height | 276mm |
| Weight | 3.4kg | Thickness | 1mm |
| Cover thickness | 19mm | Size | 295*415mm |
| Product Feature | 1, Stainless steel material, anti-corrosion and rust prevention 2, Strong sealing performance 3, Fast suction speed | | |



YC-15L-SDT

| | | | |
|-----------------|---|-----------------|-----------|
| Material | Stainless steel | Volume | 15L |
| Outer diameter | 265mm | Inner diameter | 247mm |
| External height | 450mm | Internal height | 314mm |
| Weight | 4.2kg | Thickness | 1mm |
| Cover thickness | 19mm | Size | 325*450mm |
| Product Feature | 1, Stainless steel material, anti-corrosion and rust prevention 2, Strong sealing performance 3, Fast suction speed | | |



YC-21L-SDT

| | | | |
|-----------------|---|-----------------|-----------|
| Material | Stainless steel | Volume | 21L |
| Outer diameter | 315mm | Inner diameter | 297mm |
| External height | 435mm | Internal height | 299mm |
| Weight | 5.9kg | Thickness | 1mm |
| Cover thickness | 24mm | Size | 390*435mm |
| Product Feature | 1, Stainless steel material, anti-corrosion and rust prevention 2, Strong sealing performance 3, Fast suction speed | | |

STAINLESS STEEL DEFOAMING BUCKET WITH TRANSPARENT LID



YC-30L-SDT

| | | | |
|-----------------|---|-----------------|-----------|
| Material | Stainless steel | Volume | 30L |
| Outer diameter | 365mm | Inner diameter | 347mm |
| External height | 450mm | Internal height | 320mm |
| Weight | 8.85kg | Thickness | 1.5mm |
| Cover thickness | 24mm | Size | 440*450mm |
| Product Feature | 1, Stainless steel material, anti-corrosion and rust prevention 2, Strong sealing performance 3, Fast suction speed | | |



YC-40L-SDT

| | | | |
|-----------------|---|-----------------|-----------|
| Material | Stainless steel | Volume | 40L |
| Outer diameter | 365mm | Inner diameter | 347mm |
| External height | 570mm | Internal height | 415mm |
| Weight | 10.1kg | Thickness | 1.5mm |
| Cover thickness | 24mm | Size | 440*570mm |
| Product Feature | 1, Stainless steel material, anti-corrosion and rust prevention 2, Strong sealing performance 3, Fast suction speed | | |



YC-50L-SDT

| | | | |
|-----------------|---|-----------------|-----------|
| Material | Stainless steel | Volume | 50L |
| Outer diameter | 365mm | Inner diameter | 347mm |
| External height | 660mm | Internal height | 517mm |
| Weight | 11.4kg | Thickness | 1.5mm |
| Cover thickness | 24mm | Size | 440*660mm |
| Product Feature | 1, Stainless steel material, anti-corrosion and rust prevention 2, Strong sealing performance 3, Fast suction speed | | |

STAINLESS STEEL DEFOAMING BUCKET / OIL FREE VACUUM PUMP



6L+VN120H

| | | | |
|-----------------------------------|----------------------|--------------------|-----------------|
| Material | Stainless steel | Volume | 6L |
| Outer diameter | 235mm | Inner diameter | 217mm |
| External height | 320mm | Internal height | 186mm |
| Weight | 3kg | Thickness | 1mm |
| Cover thickness | 19mm | Size | 290*320mm (W*H) |
| Voltage: 220V | Power: 370W | Weight: 8Kg | Speed: 80L/min |
| Installation dimensions: 203*89mm | Interface size: G1/4 | Max vacuum: -99Kpa | |



10L+VN180H

| | | | |
|-----------------------------------|----------------------|--------------------|-----------------|
| Material | Stainless steel | Volume | 10L |
| Outer diameter | 235mm | Inner diameter | 217mm |
| External height | 415mm | Internal height | 276mm |
| Weight | 3.4kg | Thickness | 1mm |
| Cover thickness | 19mm | Size | 295*415mm (W*H) |
| Voltage: 220V | Power: 600W | Weight: 10Kg | Speed: 120L/min |
| Installation dimensions: 203*89mm | Interface size: G1/4 | Max vacuum: -99Kpa | |



15L+200H

| | | | |
|------------------------------------|----------------------|--------------------|-----------------|
| Material | Stainless steel | Volume | 15L |
| Outer diameter | 265mm | Inner diameter | 247mm |
| External height | 450mm | Internal height | 314mm |
| Weight | 4.2kg | Thickness | 1mm |
| Cover thickness | 19mm | Size | 325*450mm (W*H) |
| Voltage: 220V | Power: 1000W | Weight: 10Kg | Speed: 150L/min |
| Installation dimensions: 243*127mm | Interface size: G1/2 | Max vacuum: -99Kpa | |



21L+300H

| | | | |
|------------------------------------|----------------------|--------------------|-----------------|
| Material | Stainless steel | Volume | 21L |
| Outer diameter | 315mm | Inner diameter | 297mm |
| External height | 435mm | Internal height | 299mm |
| Weight | 5.9kg | Thickness | 1mm |
| Cover thickness | 24mm | Size | 390*435mm (W*H) |
| Voltage: 220V | Power: 1500W | Weight: 17Kg | Speed: 200L/min |
| Installation dimensions: 243*127mm | Interface size: G1/2 | Max vacuum: -99Kpa | |

STAINLESS STEEL DEFOAMING BUCKET / OIL FREE VACUUM PUMP



YC-6L-SD-330R

| | | | | | |
|--------------------|-----------------------|----------------|---------|-----------------|----------|
| Outer diameter | 235mm | Inner diameter | 217mm | External height | 320mm |
| Barrel depth | 186mm | Weight | 3kg | Thickness | 1mm |
| Cover thickness | 19mm | | | | |
| Type | VN-0020 | Power | 900W | Speed | 2800rpm |
| Voltage | 220V | Interface size | G1/2 | Pumping speed | 330L/min |
| Refueling quantity | 0.5L | Max vacuum | -100Kpa | | |
| Size | 450*250*290mm (L*W*H) | | | | |



YC-10L-SD-330R

| | | | | | |
|--------------------|-----------------------|----------------|---------|-----------------|----------|
| Outer diameter | 235mm | Inner diameter | 217mm | External height | 415mm |
| Barrel depth | 276mm | Weight | 3.4kg | Thickness | 1mm |
| Cover thickness | 19mm | | | | |
| Type | VN-0020 | Power | 900W | Speed | 2800rpm |
| Voltage | 220V | Interface size | G1/2 | Pumping speed | 330L/min |
| Refueling quantity | 0.5L | Max vacuum | -100Kpa | | |
| Size | 450*250*290mm (L*W*H) | | | | |



YC-10L-SD-416R

| | | | | | |
|--------------------|-----------------------|----------------|---------|-----------------|----------|
| Outer diameter | 235mm | Inner diameter | 217mm | External height | 415mm |
| Barrel depth | 276mm | Weight | 3.4kg | Thickness | 1mm |
| Cover thickness | 19mm | | | | |
| Type | VN-0025 | Power | 750W | Speed | 2800rpm |
| Voltage | 220V/380V | Interface size | G3/4 | Pumping speed | 416L/min |
| Refueling quantity | 0.5L | Max vacuum | -100Kpa | | |
| Size | 310*250*220mm (L*W*H) | | | | |



YC-15L-SD-416R

| | | | | | |
|--------------------|-----------------------|----------------|---------|-----------------|----------|
| Outer diameter | 265mm | Inner diameter | 247mm | External height | 450mm |
| Barrel depth | 314mm | Weight | 4.2kg | Thickness | 1mm |
| Cover thickness | 19mm | | | | |
| Type | VN-0025 | Power | 750W | Speed | 2800rpm |
| Voltage | 220V/380V | Interface size | G3/4 | Pumping speed | 416L/min |
| Refueling quantity | 0.5L | Max vacuum | -100Kpa | | |
| Size | 310*250*220mm (L*W*H) | | | | |



YC-21L-SD-666R

| | | | | | |
|--------------------|-----------------------|----------------|---------|-----------------|----------|
| Outer diameter | 315mm | Inner diameter | 297mm | External height | 435mm |
| Barrel depth | 299mm | Weight | 5.9kg | Thickness | 1mm |
| Cover thickness | 24mm | | | | |
| Type | VN-0040 | Power | 1500W | Speed | 1440rpm |
| Voltage | 220V | Interface size | G1-1/4 | Pumping speed | 666L/min |
| Refueling quantity | 1.5L | Max vacuum | -100Kpa | | |
| Size | 640*280*265mm (L*W*H) | | | | |