



食品机械制造专家

FOOD MACHINERY MANUFACTURING EXPERTS

绞肉机 / 锯骨机 / 果汁机 / 切片机 / 和面机 / 碎冰机 / 压面机

B 锯骨机系列

ONE SAW MACHINE SERIES



210型锯骨机 (不锈钢板) Bone saw machine

| | | |
|--------|----------------------|----------------|
| 电源电压 | Voltage | 110V/220V/240V |
| 电机功率 | Motor Power | 1100W |
| 频 率 | Frequency Rate | 50/60Hz |
| 锯带线速度 | Saw Blade Speed | 15/19m/s |
| 带轮直径 | Wheel Diameter | 210mm |
| 切割厚度 | Cutting Thickness | 4-180mm |
| 工作台规格 | Table Specifications | 36.5X40.5cm |
| 毛 / 净重 | G. W. /N. W. | 38.5/33.5kg |
| 包装尺寸 | Size Of Package | 49X49X92.5cm |



210型锯骨机 Bone saw machine

| | | |
|--------|----------------------|----------------|
| 电源电压 | Voltage | 110V/220V/240V |
| 电机功率 | Motor Power | 1100W |
| 频 率 | Frequency Rate | 50/60Hz |
| 锯带线速度 | Saw Blade Speed | 15/19m/s |
| 带轮直径 | Wheel Diameter | 210mm |
| 切割厚度 | Cutting Thickness | 4-180mm |
| 工作台规格 | Table Specifications | 36.5X38cm |
| 毛 / 净重 | G. W. /N. W. | 38.5/33.5kg |
| 包装尺寸 | Size Of Package | 49X49X92.5cm |

B 锯骨机系列

ONE SAW MACHINE SERIES



210型锯骨机 (保护罩) Bone saw machine

| | | |
|--------|----------------------|----------------|
| 电源电压 | Voltage | 110V/220V/240V |
| 电机功率 | Motor Power | 1100W |
| 频率 | Frequency Rate | 50/60Hz |
| 锯带线速度 | Saw Blade Speed | 15/19m/s |
| 带轮直径 | Wheel Diameter | 210mm |
| 切割厚度 | Cutting Thickness | 4-180mm |
| 工作台规格 | Table Specifications | 36.5X38cm |
| 毛 / 净重 | G. W. /N. W. | 40/35kg |
| 包装尺寸 | Size Of Package | 49X49X92.5cm |

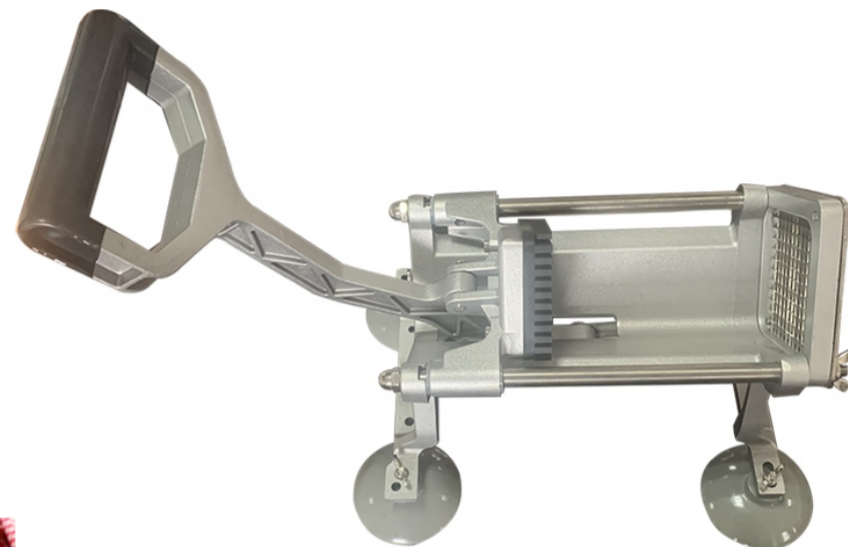


不锈钢 锯骨机 Stainless Steel Bone saw machine

| | | |
|--------|----------------------|----------------|
| 电源电压 | Voltage | 110V/220V/240V |
| 电机功率 | Motor Power | 1100W |
| 频率 | Frequency Rate | 50/60Hz |
| 锯带线速度 | Saw Blade Speed | 15/19m/s |
| 带轮直径 | Wheel Diameter | 210mm |
| 切割厚度 | Cutting Thickness | 4-180mm |
| 工作台规格 | Table Specifications | 36.5X48cm |
| 毛 / 净重 | G. W. /N. W. | 48.5/40kg |
| 包装尺寸 | Size Of Package | 50X50X90.5cm |

F 果汁机系列

FRUIT JUICE MACHINE SERIES



电动榨汁薯条机 S.S. Juicer & Potato chips Cutter

| | |
|----------------------------|----------------------|
| 生产能力(切薯条) Product Capacity | 150kg/h |
| 频率 Frequency | 50Hz |
| 电机功率 Motor Power | 40W |
| 电源电压 Voltage | 110-240V |
| 电机转速 Speed | 3000s/m |
| 毛/净重 G. W/N. W. | 12.5/11.5kgs |
| 机器材质 Material Of Machine | 不锈钢(stainless steel) |
| 包装尺寸 Size Of Package | 38.5X27.5X61.5cm |

手动薯条切块器 Manual potato chip cutter

| | |
|----------------------------------|--|
| 小箱尺寸 Size Of Product | |
| 小箱毛/净重 G. W/N. W. | |
| 包装 Packing | |
| 大箱尺寸 Packing Size Of Big Carton | |
| 大箱毛/净重 G. W/N. W. For Big Carton | |

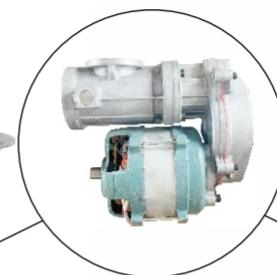
F 果汁机系列

FRUIT JUICE MACHINE SERIES



手动果汁机 Manual Juice Extractor

| | | |
|--------|----------------------------|--------------------|
| 小箱尺寸 | Size Of Product | 28.5X19X43cm |
| 小箱毛/净重 | G. W/N. W. | 6.5/6.25kg |
| 包 装 | Packing | 1pc/box、3boxes/ctn |
| 大箱尺寸 | Packing Size Of Big Carton | 59X30.5X45cm |
| 大箱毛/净重 | G. W/N. W. For Big Carton | 21.5/19kg |



22-A型 涡轮款绞肉机 S.S. MEAT GRINDER

| | | |
|--------|---------------------------|----------------------|
| 生产能力 | Product Capacity | 250kg/h |
| 频率 | Frequency | 50Hz |
| 电机功率 | Motor Power | 1100W |
| 电源电压 | Voltage | 220V |
| 绞刀转速 | Speed | 170s/m |
| 毛 / 净重 | G. W./N. W. | 26.5 / 24.5 kgs |
| 机头材质 | Material Of Machine Head | 不锈钢(stainless steel) |
| 机身材质 | Material Of Machine Shell | 不锈钢(stainless steel) |
| 包装尺寸 | Size Of Package | 49X37X46cm |

22-A型 齿轮款绞肉机 S.S. MEAT GRINDER

| | | |
|--------|---------------------------|----------------------|
| 生产能力 | Product Capacity | 250kg/h |
| 频率 | Frequency | 50Hz |
| 电机功率 | Motor Power | 1100W |
| 电源电压 | Voltage | 220V |
| 绞刀转速 | Speed | 170s/m |
| 毛 / 净重 | G. W./N. W. | 30/27.5kgs |
| 机头材质 | Material Of Machine Head | 不锈钢(stainless steel) |
| 机身材质 | Material Of Machine Shell | 不锈钢(stainless steel) |
| 包装尺寸 | Size Of Package | 49X34X43.5cm |

22-A(方) 齿轮款绞肉机 S.S. MEAT GRINDER

| | | |
|--------|---------------------------|----------------------|
| 生产能力 | Product Capacity | 250kg/h |
| 频率 | Frequency | 50/60Hz |
| 电机功率 | Motor Power | 1100W |
| 电源电压 | Voltage | 110/220V |
| 绞刀转速 | Speed | 170s/m |
| 毛 / 净重 | G. W./N. W. | 30/27.5kgs |
| 机头材质 | Material Of Machine Head | 不锈钢(stainless steel) |
| 机身材质 | Material Of Machine Shell | 不锈钢(stainless steel) |
| 包装尺寸 | Size Of Package | 49X34X43.5cm |



32-A型涡轮款绞肉机 S.S. MEAT GRINDER

| | | |
|--------|---------------------------|----------------------|
| 生产能力 | Product Capacity | 350kg/h |
| 频率 | Frequency | 50/60Hz |
| 电机功率 | Motor Power | 2200W |
| 电源电压 | Voltage | 110/220V |
| 绞刀转速 | Speed | 170s/m |
| 毛 / 净重 | G. W. /N. W. | 50/44kgs |
| 机头材质 | Material Of Machine Head | 不锈钢(stainless steel) |
| 机身材质 | Material Of Machine Shell | 不锈钢(stainless steel) |
| 包装尺寸 | Size Of Package | 56X41X50.5cm |



32-C型 齿轮款绞肉机 S.S. MEAT GRINDER

| | | |
|--------|---------------------------|----------------------|
| 生产能力 | Product Capacity | 350kg/h |
| 频率 | Frequency | 50/60Hz |
| 电机功率 | Motor Power | 2200W |
| 电源电压 | Voltage | 110/220V |
| 绞刀转速 | Speed | 170s/m |
| 毛 / 净重 | G. W. /N. W. | 55/49kgs |
| 机头材质 | Material Of Machine Head | 不锈钢(stainless steel) |
| 机身材质 | Material Of Machine Shell | 不锈钢(stainless steel) |
| 包装尺寸 | Size Of Package | 56X41X50.5cm |



32-F齿轮款(方)绞肉机 S.S. MEAT GRINDER

| | | |
|--------|---------------------------|----------------------|
| 生产能力 | Product Capacity | 350kg/h |
| 频率 | Frequency | 50/60Hz |
| 电机功率 | Motor Power | 2200W |
| 电源电压 | Voltage | 110/220V |
| 绞刀转速 | Speed | 170s/m |
| 毛 / 净重 | G. W. /N. W. | 55/49kgs |
| 机头材质 | Material Of Machine Head | 不锈钢(stainless steel) |
| 机身材质 | Material Of Machine Shell | 不锈钢(stainless steel) |
| 包装尺寸 | Size Of Package | 56X41X50.5cm |

F瓜果切菜机系列

FRUIT AND VEGETABLE CUTTING MACHINE SERIES



瓜果切菜机系列 Fruits and vegetable cutter series

| | | |
|--------|---------------------------|----------------------|
| 调节厚度 | Adjust the thickness | 0.5-7mm |
| 频率 | Frequency | 50/60Hz |
| 电机功率 | Motor Power | 1500W |
| 电源电压 | Voltage | 110/220V |
| 绞刀转速 | Speed | 350s/m |
| 毛 / 净重 | G. W. /N. W. | 40/38kgs |
| 刀盘材质 | Material Of Knife plate | 不锈钢(stainless steel) |
| 机身材质 | Material Of Machine Shell | 不锈钢(stainless steel) |
| 包装尺寸 | Size Of Package | 45.5X42.5X83cm |

自动剪(洗)螺机

| | | |
|--------|------------------|------------|
| 生产能力 | Product Capacity | 60kg/h |
| 频率 | Frequency | 50Hz |
| 电机功率 | Motor Power | 550W |
| 电源电压 | Voltage | 220V |
| 毛 / 净重 | G. W. /N. W. | 41/39kgs |
| 包装尺寸 | Size Of Package | 68X30X58cm |

M 绞切机系列

EAT GRINDER SERIES



128型 台式绞切肉机 MEAT SLICER AND GRINDER

| | | |
|--------|---------------------------|----------------------|
| 生产能力 | Product Capacity | 350kg/h |
| 频率 | Frequency | 50/60Hz |
| 电机功率 | Motor Power | 850W |
| 电源电压 | Voltage | 110/220V |
| 绞刀转速 | Speed | 170s/m |
| 毛 / 净重 | G. w. / n. w. | 38/36kgs |
| 机头材质 | Material Of Machine Head | 不锈钢(stainless steel) |
| 机身材质 | Material Of Machine Shell | 铝合金(Aluminum alloy) |
| 包装尺寸 | Size Of Package | 46X41X46cm |



228型 台式绞切肉机 Desktop ground meat slicer

| | | |
|--------|---------------------------|----------------------|
| 生产能力 | Product Capacity | 350kg/h |
| 频率 | Frequency | 50/60Hz |
| 电机功率 | Motor Power | 1100W |
| 电源电压 | Voltage | 110V220V |
| 绞刀转速 | Speed | 170s/m |
| 毛 / 净重 | G. W/N. W. | 39/37kgs |
| 机头材质 | Material Of Machine Head | 不锈钢(stainless steel) |
| 机身材质 | Material Of Machine Shell | 铝合金(Aluminum alloy) |
| 包装尺寸 | Size Of Package | 46X41X46cm |



M 绞切机系列

EAT GRINDER SERIES



12型 台式绞切两用机 MEAT SLICER AND GRINDER

| | | |
|--------|---------------------------|---------------------|
| 生产能力 | Product Capacity | 200kg/h |
| 频率 | Frequency | 50/60Hz |
| 电机功率 | Motor Power | 850W |
| 电源电压 | Voltage | 110/220V |
| 绞刀转速 | Speed | 170s/m |
| 毛 / 净重 | G. W. / N. W. | 38/36kgs |
| 机头材质 | Material Of Machine Head | 铸铁电镀 (Iron plating) |
| 机身材质 | Material Of Machine Shell | 铝合金(Aluminum alloy) |
| 包装尺寸 | Size Of Package | 46X41X46cm |



22型 台式绞切两用机 MEAT SLICER AND GRINDER

| | | |
|--------|---------------------------|---------------------|
| 生产能力 | Product Capacity | 250kg/h |
| 频率 | Frequency | 50/60Hz |
| 电机功率 | Motor Power | 1100W |
| 电源电压 | Voltage | 110/220V |
| 绞刀转速 | Speed | 170s/m |
| 毛 / 净重 | G. W. / N. W. | 39/37kgs |
| 机头材质 | Material Of Machine Head | 铸铁电镀 (Iron plating) |
| 机身材质 | Material Of Machine Shell | 铝合金(Aluminum alloy) |
| 包装尺寸 | Size Of Package | 46X41X46cm |



M 绞肉机系列

EAT GRINDER SERIES



2.2型烤漆绞肉机 Painting MEAT GRINDER

| | | |
|--------|---------------------------|---------------------|
| 生产能力 | Product Capacity | 150kg/h |
| 频率 | Frequency | 50/60Hz |
| 电机功率 | Motor Power | 1100W |
| 电源电压 | Voltage | 110/220V |
| 绞刀转速 | Speed | 170s/m |
| 毛 / 净重 | G. W. / N. W. | 25/23.5kgs |
| 机头材质 | Material Of Machine Head | 铸铁电镀 (Iron plating) |
| 机身材质 | Material Of Machine Shell | 喷漆 (spray paint) |
| 包装尺寸 | Size Of Package | 43X29X40cm |



2.2型半钢绞肉机 Half stainless steel MEAT GRINDER

| | | |
|--------|---------------------------|-----------------------|
| 生产能力 | Product Capacity | 150kg/h |
| 频率 | Frequency | 50/60Hz |
| 电机功率 | Motor Power | 1100W |
| 电源电压 | Voltage | 110/220V |
| 绞刀转速 | Speed | 170s/m |
| 毛 / 净重 | G. w. / n. w. | 25/23.5kgs |
| 机头材质 | Material Of Machine Head | 铸铁电镀 (Iron plating) |
| 机身材质 | Material Of Machine Shell | 不锈钢 (stainless steel) |
| 包装尺寸 | Size Of Package | 43X29X40cm |



2.2型全钢绞肉机 Stainless steel MEAT GRINDER

| | | |
|--------|---------------------------|-----------------------|
| 生产能力 | Product Capacity | 150kg/h |
| 频率 | Frequency | 50/60Hz |
| 电机功率 | Motor Power | 1100W |
| 电源电压 | Voltage | 110/220V |
| 绞刀转速 | Speed | 170s/m |
| 毛 / 净重 | G. w. / n. w. | 26/24kgs |
| 机头材质 | Material Of Machine Head | 不锈钢 (stainless steel) |
| 机身材质 | Material Of Machine Shell | 不锈钢 (stainless steel) |
| 包装尺寸 | Size Of Package | 43X29X40cm |

M 绞肉机系列

EAT GRINDER SERIES



1.2型半钢绞肉机 Half stainless steel MEAT GRINDER

| | | |
|--------|---------------------------|-----------------------|
| 生产能力 | Product Capacity | 120kg/h |
| 频率 | Frequency | 50/60Hz |
| 电机功率 | Motor Power | 850W |
| 电源电压 | Voltage | 110/220V |
| 绞刀转速 | Speed | 170s/m |
| 毛 / 净重 | G. W. /N. W. | 19.5/18kg |
| 机头材质 | Material Of Machine Head | 铸铁电镀 (Iron plating) |
| 机身材质 | Material Of Machine Shell | 不锈钢 (stainless steel) |
| 产品尺寸 | Size Of Product | 37X22X42cm |
| 包装尺寸 | Size Of Package | 41X26.8X44.5cm |



1.2型半钢绞肉机 (带鼓) Half stainless steel MEAT GRINDER

| | | |
|--------|---------------------------|-----------------------|
| 生产能力 | Product Capacity | 120kg/h |
| 频率 | Frequency | 50/60Hz |
| 电机功率 | Motor Power | 850W |
| 电源电压 | Voltage | 110/220V |
| 绞刀转速 | Speed | 170s/m |
| 毛 / 净重 | G. W. /N. W. | 19.5/18kg |
| 机头材质 | Material Of Machine Head | 铸铁电镀 (Iron plating) |
| 机身材质 | Material Of Machine Shell | 不锈钢 (stainless steel) |
| 产品尺寸 | Size Of Product | 37X22X42cm |
| 包装尺寸 | Size Of Package | 41X26.8X44.5cm |

M 绞肉机系列

EAT GRINDER SERIES



12型烤漆绞肉机 Painting MEAT GRINDER

| | | |
|--------|---------------------------|---------------------|
| 生产能力 | Product Capacity | 120kg/h |
| 频率 | Frequency | 50/60Hz |
| 电机功率 | Motor Power | 850W |
| 电源电压 | Voltage | 110/220V |
| 绞刀转速 | Speed | 170s/m |
| 毛 / 净重 | G. W. /N. W. | 19.5/18kgs |
| 机头材质 | Material Of Machine Head | 铸铁电镀 (Iron plating) |
| 机身材质 | Material Of Machine Shell | 喷漆 (spray paint) |
| 产品尺寸 | Size Of Product | 37X22X42cm |
| 包装尺寸 | Size Of Package | 41X26.8X44.5cm |



12型全钢绞肉机 Stainless steel MEAT GRINDER

| | | |
|--------|---------------------------|-----------------------|
| 生产能力 | Product Capacity | 120kg/h |
| 频率 | Frequency | 50/60Hz |
| 电机功率 | Motor Power | 850W |
| 电源电压 | Voltage | 110/220V |
| 绞刀转速 | Speed | 170s/m |
| 毛 / 净重 | G. W. /N. W. | 20.5/19kgs |
| 机头材质 | Material Of Machine Head | 不锈钢 (stainless steel) |
| 机身材质 | Material Of Machine Shell | 不锈钢 (stainless steel) |
| 产品尺寸 | Size Of Product | 37X22X42cm |
| 包装尺寸 | Size Of Package | 41X26.8X44.5cm |

M 绞肉机系列

EAT GRINDER SERIES



8型烤漆绞肉机 Painting MEAT GRINDER

| | | |
|--------|---------------------------|---------------------|
| 生产能力 | Product Capacity | 60kg/h |
| 频率 | Frequency | 50Hz |
| 电机功率 | Motor Power | 450W |
| 电源电压 | Voltage | 220V |
| 绞刀转速 | Speed | 170s/m |
| 毛 / 净重 | G. W. /N. W. | 11/10kgs |
| 机头材质 | Material Of Machine Head | 铸铁电镀 (Iron plating) |
| 机身材质 | Material Of Machine Shell | 喷漆 (spray paint) |
| 产品尺寸 | Size Of Product | 30X17X33cm |
| 包装尺寸 | Size Of Package | 30X20X29cm |



8型半钢绞肉机 Half stainless steel MEAT GRINDER

| | | |
|--------|---------------------------|-----------------------|
| 生产能力 | Product Capacity | 60kg/h |
| 频率 | Frequency | 50Hz |
| 电机功率 | Motor Power | 450W |
| 电源电压 | Voltage | 220V |
| 绞刀转速 | Speed | 170s/m |
| 毛 / 净重 | G. W. /N. W. | 11/10kgs |
| 机头材质 | Material Of Machine Head | 铸铁电镀 (Iron plating) |
| 机身材质 | Material Of Machine Shell | 不锈钢 (stainless steel) |
| 产品尺寸 | Size Of Product | 30X17X33cm |
| 包装尺寸 | Size Of Package | 30X20X29cm |



8型全钢绞肉机 Stainless steel MEAT GRINDER

| | | |
|--------|---------------------------|-----------------------|
| 生产能力 | Product Capacity | 60kg/h |
| 频率 | Frequency | 50Hz |
| 电机功率 | Motor Power | 450W |
| 电源电压 | Voltage | 220V |
| 绞刀转速 | Speed | 170s/m |
| 毛 / 净重 | G. W. /N. W. | 11/10kgs |
| 机头材质 | Material Of Machine Head | 不锈钢 (stainless steel) |
| 机身材质 | Material Of Machine Shell | 不锈钢 (stainless steel) |
| 产品尺寸 | Size Of Product | 30X17X33cm |
| 包装尺寸 | Size Of Package | 30X20X29cm |

M 切片机系列

EAT SERIES



12型切肉机 MEAT SLICER AND GRINDER

| | | |
|------|---------------------------|---------------------|
| 生产能力 | Product Capacity | 120kg/h |
| 频率 | Frequency | 50Hz |
| 电机功率 | Motor Power | 850W |
| 电源电压 | Voltage | 220V |
| 绞刀转速 | Speed | 170s/m |
| 毛/净重 | G. w. /n. w. | 29/27kgs |
| 机头材质 | Material Of Machine Head | 铸铁电镀 (Iron plating) |
| 机身材质 | Material Of Machine Shell | 喷塑 (spray paint) |
| 包装尺寸 | Size Of Package | 41X26. 8X44. 5cm |



70型切肉机 Meat slicer

| | | |
|------|---------------------------|---------------------|
| 生产能力 | Product Capacity | 80kg/h |
| 频率 | Frequency | 50Hz |
| 电机功率 | Motor Power | 370W |
| 电源电压 | Voltage | 220V |
| 毛/净重 | G. W. /N. W. | 15/14kgs |
| 机头材质 | Material Of Machine Head | 铸铁电镀 (Iron plating) |
| 机身材质 | Material Of Machine Shell | 喷塑 (spray paint) |
| 包装尺寸 | Size Of Package | 30X30X32cm |



不锈钢切片机 Stainless steel meat slicer

| | | |
|------|---------------------------|-----------------------|
| 生产能力 | Product Capacity | 150kgs/h |
| 频率 | Frequency | 50/60Hz |
| 电机功率 | Motor Power | 550W |
| 电源电压 | Voltage | 110/220V |
| 毛/净重 | G. W. /N. W. | 25/23kgs |
| 机头材质 | Material Of Machine Head | 不锈钢 (stainless steel) |
| 机身材质 | Material Of Machine Shell | 不锈钢 (stainless steel) |
| 产品尺寸 | Size Of Product | 29X26X30cm |
| 包装尺寸 | Size Of Package | 30X27X31cm |

M 绞切机系列

EAT GRINDER SERIES



(立式) 不锈钢电动绞肉机

| | | |
|--------|---------------------------|-----------------------|
| 生产能力 | Product Capacity | 220kg/h |
| 频率 | Frequency | 50Hz |
| 电机功率 | Motor Power | 1500W |
| 电源电压 | Voltage | 220V |
| 绞刀转速 | Speed | 170s/m |
| 毛 / 净重 | G. W. /N. W. | 37/36kgs |
| 机头材质 | Material Of Machine Head | 铸铁电镀 (Iron plating) |
| 机身材质 | Material Of Machine Shell | 不锈钢 (stainless steel) |
| 包装尺寸 | Size Of Package | 34X39X68cm |



(立式) 不锈钢电动切片切丝机

| | | |
|--------|---------------------------|-----------------------|
| 生产能力 | Product Capacity | 220kg/h |
| 频率 | Frequency | 50Hz |
| 电机功率 | Motor Power | 1500W |
| 电源电压 | Voltage | 220V |
| 绞刀转速 | Speed | 170s/m |
| 毛 / 净重 | G. W. /N. W. | 37/36kgs |
| 机头材质 | Material Of Machine Head | 铸铁电镀 (Iron plating) |
| 机身材质 | Material Of Machine Shell | 不锈钢 (stainless steel) |
| 包装尺寸 | Size Of Package | 32X37X68cm |



5型 和面机

| | | |
|--------|------------------|---------------|
| 生产能力 | Product Capacity | 5kg/次 |
| 频率 | Frequency | 50Hz |
| | Motor Power | 1500W |
| 电源电压 | Voltage | 220V |
| 毛 / 净重 | G. W. /N. W. | 35/34kg |
| 包装尺寸 | Size Of Package | 52. 5X29X60cm |



15型 和面机

| | | |
|--------|------------------|---------------|
| 生产能力 | Product Capacity | 15kg/次 |
| 频率 | Frequency | 50Hz |
| | Motor Power | 1500W |
| 电源电压 | Voltage | 220V |
| 毛 / 净重 | G. W. /N. W. | 42. 6/41. 5kg |
| 包装尺寸 | Size Of Package | 66. 5X36X76cm |



25型 和面机

| | | |
|--------|------------------|------------------|
| 生产能力 | Product Capacity | 25kg/次 |
| 频率 | Frequency | 50Hz |
| | Motor Power | 2200W |
| 电源电压 | Voltage | 220V |
| 毛 / 净重 | G. W. /N. W. | 55/54kg |
| 包装尺寸 | Size Of Package | 75. 5X42. 5X80cm |

碎冰机系列

ICE CRUSHER SERIES



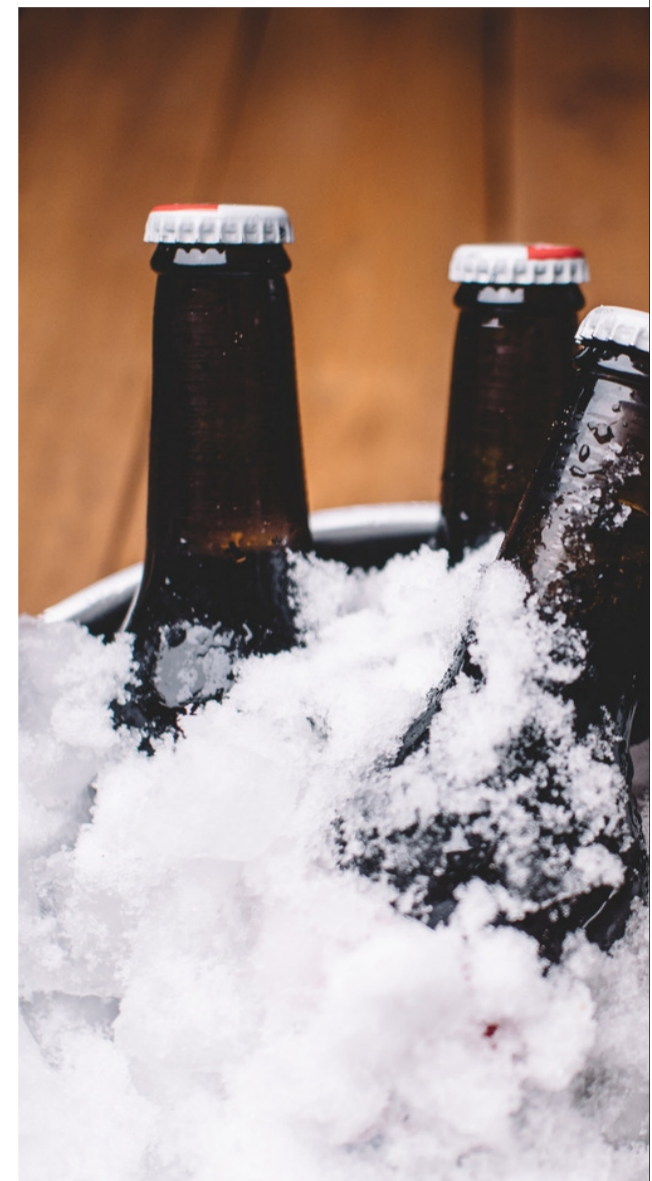
碎冰机(橙色) Ice Crusher (orange)

| | | |
|------|------------------|----------------|
| 生产能力 | Product Capacity | 65kg/h |
| 频率 | Frequency | 50Hz |
| 电机功率 | Motor Power | 250W |
| 电源电压 | Voltage | 110/220V |
| 毛/净重 | G.W./N.W. | 5.5/5kg |
| 包装尺寸 | Size Of Package | 42.5X20.5X32cm |



碎冰机(方) Ice Crusher (party)

| | | |
|------|------------------|----------------|
| 生产能力 | Product Capacity | 65kg/h |
| 频率 | Frequency | 50Hz |
| 电机功率 | Motor Power | 250W |
| 电源电压 | Voltage | 110/220V |
| 毛/净重 | G.W./N.W. | 5.5/5kg |
| 包装尺寸 | Size Of Package | 42.5X20.5X32cm |





齿轮镀铬机 Chromium gear one machine



多功能切肉机头



8-12-22型三通



210型锯骨机锯条



8-12-22型灌肠漏斗



8-12-22型绞龙



8-12-22型刀轴



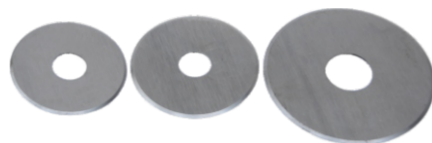
12-22型刀片



8型刀片



单绞机刀片



70-80-100圆形刀片



单绞机元刀



8-12-22型前螺母



8-12-22型涡轮



22型元刀



8型元刀



12型元刀



卫生型台式切肉机
Table Meat Cutter



| 型号 (Model) | 功率 (Power of motor) | 电压 (Supply voltage) | 工作效率 (Work efficiency) | 频率 (Frequency) | 外形尺寸 (Dimension) | 重量 (Weight) |
|---------------|------------------------|------------------------|---------------------------|-------------------|---------------------|----------------|
| GD-105T | 750W | 220V / 380v | 900kg/h | 50Hz | 46 x 30 x 49cm | 38kg |

切肉片肉丝机
Slicing Machine



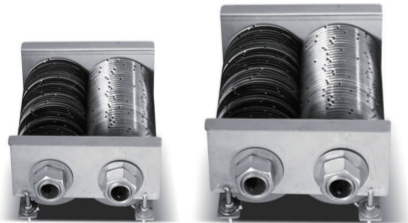
产品参数
PRODUCT PARAMETER

| 型号 (Model) | 产品功率 (Power of motor) | 电压 (Supply voltage) | 生产能力 (Output) | 重量 (Weight) | 产品尺寸 (Dimensions) |
|---------------|--------------------------|------------------------|------------------|----------------|----------------------|
| GD-130S | 750w*2 | 110v/220v | 500kg/h | 78KG | 51*51*86cm |

注意：肉片厚度可订造其它规格（产品参数如有改动，以实物为准，恕不另行通知。）
Note: the thickness of meat slices can be customized to other specifications. (If the product parameters are changed the actual product will prevail without notice.)

立式切肉机
Vertical Meat Cutting Machine

130型刀组：长200 x 宽175 x 高120mm / 约6.8kg
180型刀组：长235 x 宽200 x 高135mm / 约11kg



130刀组

180刀组



注意：肉片厚度可订造其它规格（产品参数如有改动，以实物为准，恕不另行通知。）
Note: the thickness of meat slices can be customized to other specifications. (If the product parameters are changed the actual product will prevail without notice.)

| 型号 (Model) | 功率 (Power) | 电压频率 (Supply voltage) | 肉片厚度 (Cutting thickness) | 生产能力 (Output) | 体积 (Dimensios) | 重量 (Weight) |
|---------------|---------------|--------------------------|-----------------------------|------------------|-------------------|----------------|
| GD-130L | 750W | 110V/220V | 2-50MM | 500KG/H | 51 x 31 x 64CM | 38KG |
| GD-180L | 1.1KW | 110V/220V | 2-50MM | 800KG/H | 66 x 38 x 74CM | 68KG |

商用绞肉机 Meatballs Beater



绞肉机系列 Meat Grinder Series



TJ-JR12

TJ-JR22/32

TJ-JR42/52

产品参数 PRODUCT PARAMETER

| 型号 (Model) | 产品功率 (Power of motor) | 电压频率 (Supply voltage) | 生产能力 (Output) | 重量 (Weight) | 产品尺寸 (Dimensions) |
|---------------|--------------------------|--------------------------|------------------|----------------|----------------------|
| GD-JR12 | 800w | 220v 50Hz | 120KG/H | 18KG | 20*37*42CM |
| GD-JR22 | 1100w | 220v 50Hz | 220KG/H | 25KG | 23*47*44CM |
| GD-JR32 | 1500w | 220v 50Hz | 350KG/H | 67KG | 37*75*62CM |
| GD-JR42 | 2200w | 320v 50Hz | 600KG/H | 100KG | 44*83*86CM |
| GD-JR52 | 5000w | 320v 50Hz | 1000KG/H | 175KG | 70*126*120CM |

注意：产品参数如有改动，以实物为准，恕不另行通知
Note: The product parameters are changed the actual product will prevail without notice

立式绞肉机 Vertical Meat Grinder

产品特点:

- ① 全不锈钢架
- ② 全不锈钢机头
- ③ 美观耐用
- ④ 动力强劲



产品参数 PRODUCT PARAMETER

| 型号 (Model) | 产品功率 (Power of motor) | 电压 (Supply voltage) | 生产能力 (Output) | 重量 (Weight) | 产品尺寸 (Dimensions) |
|---------------|--------------------------|------------------------|------------------|----------------|----------------------|
| GD-22型 | 1.1kw | 110v/220v | 200kg/h | 30KG | 36 x 40 x 68cm |

注意：产品参数如有改动，以实物为准，恕不另行通知
Note: The product parameters are changed the actual product will prevail without notice

绞切两用机
Cutter Machine



产品参数
PRODUCT PARAMETER

| 型号 (Model) | 产品功率 (Power of motor) | 电压频率 (Supply voltage) | 生产能力 (Output) | 重量 (Weight) | 产品尺寸 (Dimensios) |
|---------------|--------------------------|--------------------------|-------------------------|----------------|---------------------|
| GD-JQ70 | 2200w | 220v 50Hz | 绞肉150kg/h (切肉250kg / h) | 63KG | 66*46*80CM |

注意：肉片厚度可订造其它规格 (产品参数如有改动，以实物为准，恕不另行通知。)
Note: the thickness of meat slices can be customized to other specifcations (if theproduct parameters are changed the actual product will prevail without notice)

肉丸打浆机 (不锈钢架款)
Meatball Beater (Stainless Steel Frame)



产品参数
PRODUCT PARAMETER

| 型号 (Model) | 功率 (Power of motor) | 电压频率 (Supply voltage) | 生产能力 (Output) | 重量 (Weight) | 体积 (Dimensios) |
|---------------|------------------------|--------------------------|------------------|----------------|-------------------|
| GD-18R型 | 1.5kw | 220V 50Hz | 2kg/次 | 23KG | 32*32*82cm |
| GD-20R型 | 1.5kw | 220V 50Hz | 2.5kg/次 | 25KG | 32*35*82cm |
| GD-22R型 | 2.2kw | 220V 50Hz | 3kg/次 | 30KG | 37*39*83cm |
| GD-24R型 | 3kw | 220V 50Hz | 3.5kg/次 | 35KG | 37*42*83cm |

注意：产品参数如有改动，以实物为准，恕不另行通知
Note: The product parameters are changed the actual product will prevail without notice

肉丸打浆机 Meatball Beater

- > 设计合理、操作方便、工作效率高
Reasonable design, convenient operation and high efficiency
- > 符合国家卫生要求 零件采用不锈钢或电镀处理
In line with national health requirements parts are made of stainless steel or electroplating
- > 合适食堂、招待所、大、中、小餐馆、工厂等
Suitable for canteen, guest house large, medium and small restaurants, factories and so on



产品参数 PRODUCT PARAMETER

| 型号 (Model) | 功率 (Power of motor) | 电压频率 (Supply voltage) | 生产能力 (Output) | 重量 (Weight) | 体积 (Dimensions) |
|------------|---------------------|-----------------------|---------------|-------------|-----------------|
| GD-18R型 | 1.1kw | 220V 50Hz | 2kg/次 | 23KG | 32*32*82cm |
| GD-20R型 | 1.5kw | 220V 50Hz | 2.5kg/次 | 25KG | 32*35*82cm |
| GD-22R型 | 2.2kw | 220V 50Hz | 3kg/次 | 30KG | 37*39*83cm |
| GD-24R型 | 3kw | 220V 50Hz | 3.5kg/次 | 35KG | 37*42*83cm |
| GD-30R型 | 3kw | 220V 50Hz | 8kg/次 | 50KG | 46*41*86cm |

注意：产品参数如有改动，以实物为准，恕不另行通知
Note: The product parameters are changed the actual product will prevail without notice



鱼肉采肉机 Fish Meat Picker



产品参数 PRODUCT PARAMETER

| 型号 (Model) | 150型 | 200型 | 300型 | 350型 |
|---------------------|-------------|-------------|-------------|---------------|
| 规格 (Specifications) | 85x70x90cm | 94x80x93cm | 110x70x93cm | 130x100x105cm |
| 材质 (Material) | SUS304 | SUS304 | SUS304 | SUS304 |
| 产量 (Yield) | 180kg / h | 250kg / h | 500kg / h | 1.5T / h |
| 功率 (Power) | 2.2/1.5kw | 2.2/1.5kw | 3kw | 7.5kw |
| 皮带厚度 (Thickness) | 2cm | 2cm | 2cm | 2cm |
| 皮带外长度 (Length) | 124cm | 147cm | 147cm | 250cm |
| 网眼直径 (Diameter) | 2.7/3/3.2mm | 2.7/3/3.2mm | 2.7/3/3.2mm | 2.7/3/3.2mm |
| 重量 (Weight) | 180kg | 240kg | 280kg | 750kg |

注意：产品参数如有改动，以实物为准，恕不另行通知
Note: if the product parameters are changed the actual product will prevail without notice

肉丸成型机系列

Meatballs Forming Machines



配置各种尺寸肉丸磨具

磨具规格: 18、22、26mm可订造其它尺寸规格11、36mm
Mold specification: 18、22、26mm can be customized other 11、36mm specification



台式肉丸成型机
(Paint rack)

产品参数

PRODUCT PARAMETER

| 型号 (Model) | 功率 (Power of motor) | 电压频率 (Supply voltage) | 工作效率 (Working Efficiency) | 重量 (Weight) | 体积 (Dimensios) |
|---------------|------------------------|--------------------------|------------------------------|----------------|-------------------|
| GD-280T | 1.1kw | 220v / 380v | 280~300粒 / 分钟 | 70kg | 42x36x82cm |

注意: 产品参数如有改动, 以实物为准, 恕不另行通知
Note: The product parameters are changed the actual product will prevail without notice

立式肉丸成型机

Vertical Meatball Molding Machine



产品参数

PRODUCT PARAMETER

| 型号 (Model) | 功率 (Power of motor) | 电压频率 (Supply voltage) | 工作效率 (Working Efficiency) | 重量 (Weight) | 体积 (Dimensios) |
|---------------|------------------------|--------------------------|------------------------------|----------------|-------------------|
| GD-280L | 1.1kw | 220v / 380v | 280~300粒 / 分钟 | 80kg | 75x45x123cm |

注意: 产品参数如有改动, 以实物为准, 恕不另行通知
Note: The product parameters are changed the actual product will prevail without notice

变频狮子头丸子成型机 Frequency Lion Machine



可订造各种尺寸肉丸磨具

产品参数 PRODUCT PARAMETER

| | |
|---------------------------|-------------|
| 型号 (Model) | GD200L |
| 功率 (Power of motor) | 1.1kw |
| 电压频率 (Supply voltage) | 220v/380v |
| 工作效率 (Working Efficiency) | 280-300粒/分钟 |
| 重量 (Weight) | 80kg |
| 体积 (Dimensions) | 75*45*123cm |

注意：产品参数如有改动，以实物为准，恕不另行通知
Note: The product parameters are changed the actual product will prevail without notice

灌肠机 Enema machine

产品参数 PRODUCT PARAMETER

| | |
|-----------------------|---------------|
| 型号 (Model) | GD-GC22 |
| 功率 (Power of motor) | 2.2kw |
| 电压频率 (Supply voltage) | 220v/50Hz |
| 毛重 (Gross weight) | 85kg |
| 重量 (Weight) | 72kg |
| 产品尺寸 (Product size) | 61*38.5*129cm |
| 包装尺寸 (Package size) | 66*54*135cm |

注意：产品参数如有改动，以实物为准，恕不另行通知
Note: The product parameters are changed the actual product will prevail without notice



锯骨机 Bone Sawing Machine



产品参数 PRODUCT PARAMETER

| | | |
|------------------------|------------|------------|
| 型号 (Model) | GD-102A | GD-210 |
| 电压 (Output) | 220v 50Hz | 220v 50Hz |
| 功率 (Supply voltage) | 850w | 1500w |
| 带轮直径 (Pulley diameter) | 128mm | 150mm |
| 重量 (Weight) | 41kg | 61kg |
| 尺寸 (Size) | 50x41x77cm | 52x56x97cm |

注意：产品参数如有改动，以实物为准，恕不另行通知
Note: If the product parameters are changed the actual product will prevail without notice

大型锯骨机 Big Bone Sawing Machine



产品参数 PRODUCT PARAMETER

| | |
|------------------------|-------------|
| 型号 (Model) | GD-300A |
| 电压 (Output) | 220v 50Hz |
| 功率 (Supply voltage) | 2200w |
| 带轮直径 (Pulley diameter) | 260mm |
| 重量 (Weight) | 105kg |
| 尺寸 (Size) | 70x60x167cm |

注意：产品参数如有改动，以实物为准，恕不另行通知
Note: if the product parameters are changed the actual product will prevail without notice



其它食品机械设备

Other food machinery and equipment

- > 时尚、美观、简便操作按钮
Stylish, beautiful and easy to operate buttons
- > 安全耐用
Safe and durable
- > 加厚机身、金属机身
Thickened fuselage, Metal fuselage
- > 新型节能多用途产品、不锈钢制造
New energy-saving multi-purpose products, stainless steel manufacturing



合适多场景使用

瓜果切片切丝机 Fruit and Melon Slicer



产品参数

PRODUCT PARAMETER

| | |
|-----------------------------|------------|
| 型号 (Model) | GD-20 |
| 电压 (Voltage) | 220v/50Hz |
| 功率 (Power) | 1.1kw |
| 工作效率 (Work Efficiency) | 200kg / h |
| 刀盘转速 (Cutter Speed) | 435转 / 分 |
| 调节厚度 (Regulating Thickness) | 0.5~7mm |
| 防水等级 (Waterproof grade) | IPX1 |
| 整机重量 (Weight) | 43kg |
| 外形尺寸 (Outline Size) | 62x33x60cm |

注意：产品参数如有改动，以实物为准，恕不另行通知
Note: If the product parameters are changed the actual product will prevail without notice



家禽脱毛机 Poultry Depilator



产品特点:

家禽脱毛机大、中、小型三种，适用于鸡、鸭、鹅、羊、狗、乳猪宰杀后自动脱毛，能一次行脱净羽毛，细毛鸡爪等表皮污垢，使你从繁琐的手工作业中解脱出来，本机操作简单、省力、省时，工作效率相当于十多个人手工劳动，深受各酒店，饭堂以及家禽产品加工户的赞赏

| 型号 (Model) | 功率 (Power of motor) | 电压 (Supply) | 频率 (Voltage) | 重量 (Weight) | 产品尺寸 (Dimensions) |
|------------|---------------------|-------------|--------------|-------------|-------------------|
| GD-57 | 1.1KW | 220v | 50Hz | 55KG | 62 x 62 x 95cm |
| GD-63 | 1.5KW | 220v | 50Hz | 58KG | 70 x 70 x 95cm |
| GD-57W | 1.1KW | 220v | 50Hz | 62KG | 62 x 78 x 95cm |
| GD-63W | 1.5KW | 220v | 50Hz | 65KG | 70 x 86 x 95cm |

注意：产品参数如有改动，以实物为准，恕不另行通知
Note: If the product parameters are changed the actual product will prevail without notice

台式甘蔗机

Desktop Sugarcane Machine



产品参数

PRODUCT PARAMETER

| 型号 (Model) | 产品功率 (Power of motor) | 电压 (Supply voltage) | 压轴效率 (Speed) | 产量 (Efficiency) | 产品尺寸 (Dimensions) |
|---------------|--------------------------|------------------------|-----------------|--------------------|----------------------|
| GD-80ZT | 350w | 220v | 20R / 分钟 | 300kg / h | 40 x 40 x 62cm |
| GD-80SZL | 350w | 220v | 20R / 分钟 | 300kg / h | 40 x 40 x 62cm |

注意：产品参数如有改动，以实物为准，恕不另行通知

Note: If the product parameters are changed the actual product will prevail without notice

立式甘蔗机

Vertical Sugarcane Machine



产品参数

PRODUCT PARAMETER

| 型号 (Model) | 产品功率 (Power of motor) | 电压 (Supply voltage) | 压轴效率 (Speed) | 产量 (Efficiency) | 产品尺寸 (Dimensions) |
|---------------|--------------------------|------------------------|-----------------|--------------------|----------------------|
| GD-80ZL | 350w | 220v | 20R / 分钟 | 300kg / h | 40 x 40 x 83cm |
| GD-80SZL | 350w | 220v | 20R / 分钟 | 300kg / h | 40 x 40 x 83cm |

注意：产品参数如有改动，以实物为准，恕不另行通知

Note: If the product parameters are changed the actual product will prevail without notice