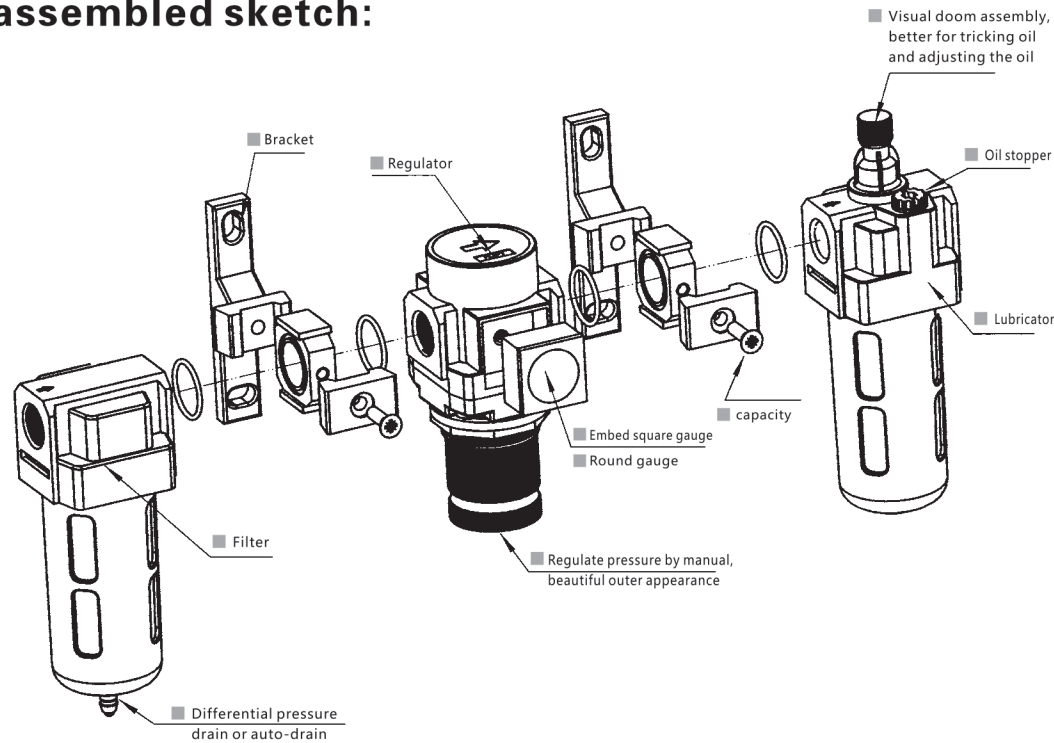


	AC Filter+Regulator+Lubricator -----	Optional(M5,1/8",1/4",3/8",1/2",3/4",1")	024
	AC Filter Regulator+Lubricator -----	Optional(M5,1/8",1/4",3/8",1/2",3/4",1")	026
	AW Filter Regulator -----	Optional(M5,1/8",1/4",3/8",1/2",3/4",1")	028
	AF Filter -----	Optional(M5,1/8",1/4",3/8",1/2",3/4",1")	030
	AR Relief Valve -----	Optional(M5,1/8",1/4",3/8",1/2",3/4",1")	032
	AL Atomized Lubricator -----	Optional(M5,1/8",1/4",3/8",1/2",3/4",1")	034

F.R.L assembled sketch:



Filter+Regulator+Lubricator

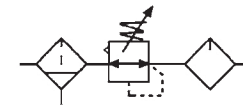


■ Specification:

Type	AC200A-01, 02	AC300A-02, 03	AC400A-03, 04	AC500A-06, 08	AC600A-06, 08
Portsize(G)	1/8" · 1/4"	1/4" · 3/8"	3/8" · 1/2"	3/4" · 1"	3/4" · 1"
Gaugethread(G)	1/8"				
Fluid	Compressed air				
Operatingpressure(MPa)	0.15~0.85				
Max.Flowrate(L/min)	1000	2000	3500	5000	
Ambient temperature(°C)	-10~60				
Filterprecision	5µm or 40µm				
Oilrecommended	ISO VG32				
Cupmaterial	Polycarbonate				
Structure	Overflow type				
Optional	Guard cup	-	•	•	•
Bracket	20T	30T	40T	50T	50T

Note1 : The guard cup of AC200A series can be optional. Note2 : Metal cups are optional.

■ Symbol:

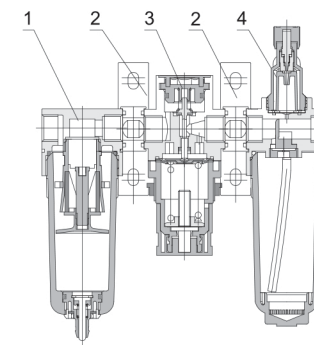


■ Product feature:

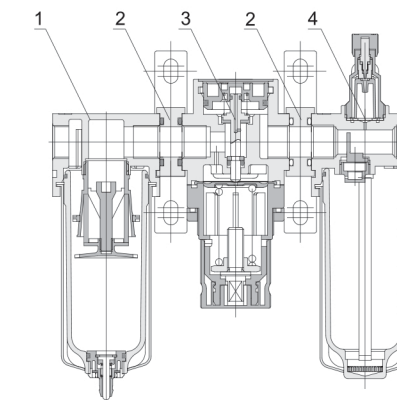
- 1.Oil dripping adopts the clearance seal to stabilize oil feeding.
- 2.Oil feeding is linear distribution and the quantity of oil is visible.
- 3.Fixed connection is fast reliable and easy for installation and using. Pressure adjust is stable and with high repeat precision.
- 4.High efficiency of removing water and solid particle.
- 5.Manual, differential pressure and automatic drain ways are optional.

■ Inner structure drawing:

■ AC200

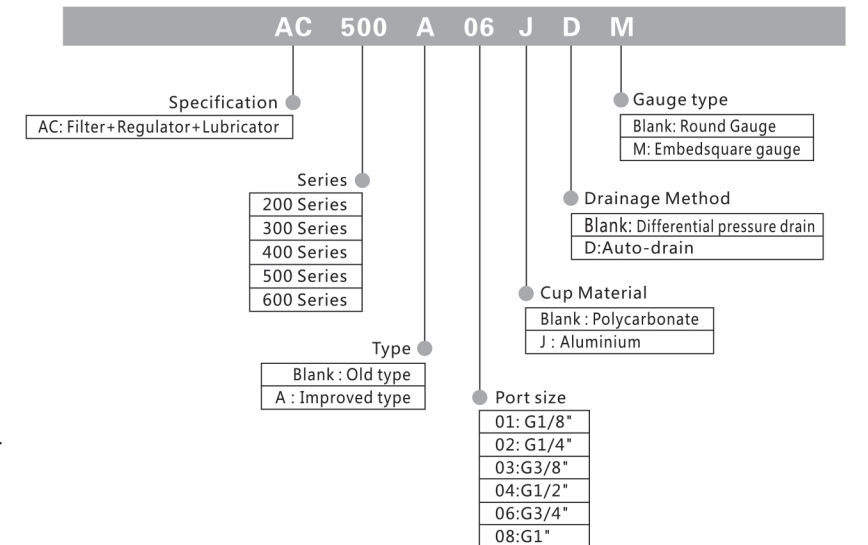


■ AC300/400/500



Number	Name
1	Filter
2	Connecting block
3	Regulator
4	Lubricator

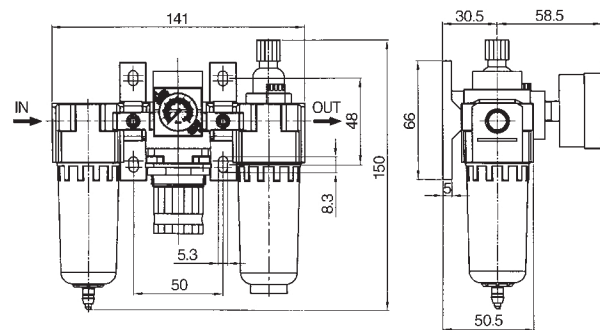
■ How to order:



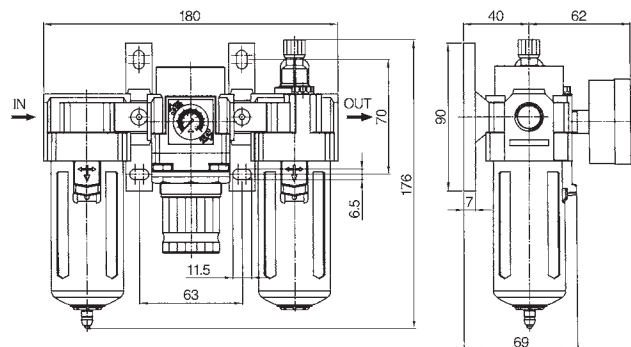
Filter+Regulator+Lubricator

Dimension(mm):

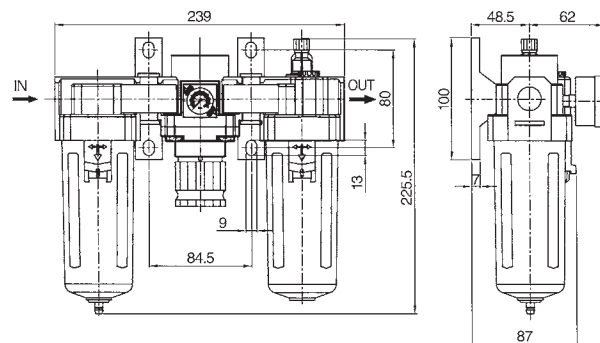
AC200A-01, 02



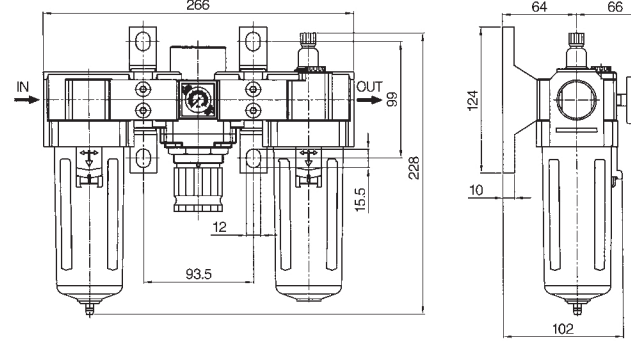
AC300A-02, 03



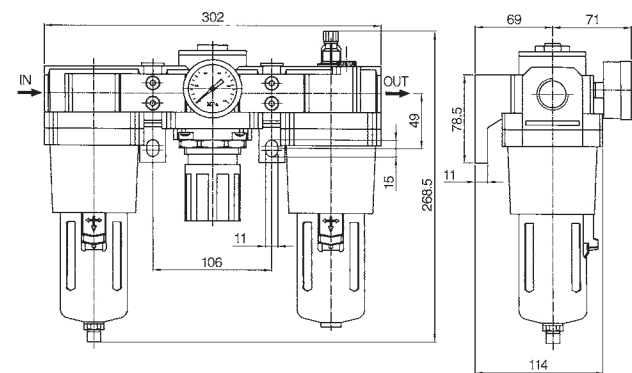
AC400A-03, 04



AC500A-06, 08



AC600A-06, 08



Filter Regulator+Lubricator

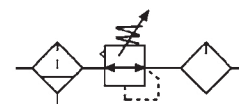


Specification:

Type	AC201A-01, 02	AC301A-02, 03	AC401A-03, 04	AC501A-06, 08	AC601A-06, 08
Port size(G)	1/8" · 1/4"	1/4" · 3/8"	3/8" · 1/2"	3/4" · 1"	3/4" · 1"
Gauge thread(G)	1/8"				
Fluid	Compressed air				
Operating pressure range(MPa)	0.15~0.85				
Max.Flowrate(L/min)	900	2000	3500	5000	
Ambient temperature(°C)	-10~60				
Filter precision	5µm or 40µm				
Oil recommended	ISO VG32				
Cup material	Polycarbonate				
Structure	Overflow type				
Optional	Guard cup	-	•	•	•
Bracket	20T	30T	40T	50T	50T

Note1: The guard cup of AC201A series can be optional. Note2: Metal cups are optional.

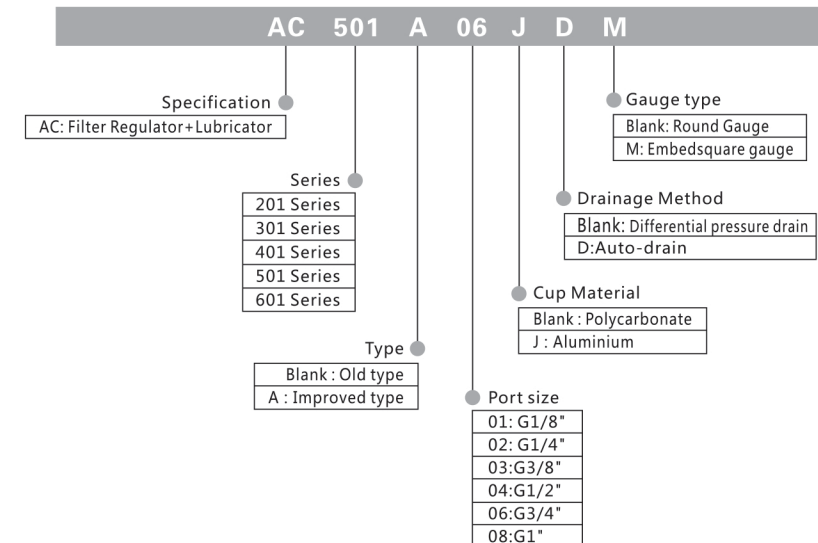
Symbol:



Product feature:

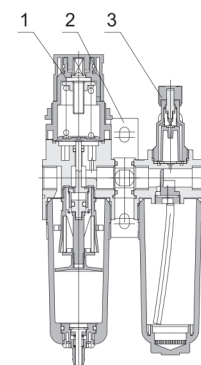
- 1.Oil dripping adopts the clearance seal to stabilize oil feeding.
- 2.Oil feeding is linear distribution and the quantity of oil is visible.
- 3.Fixed connection is fast reliable and easy for installation and using. Pressure adjust is stable and with high repeat precision.
- 4.High efficiency of removing water and solid particle.
- 5.Manual, differential pressure and automatic drain ways are optional.

How to order:

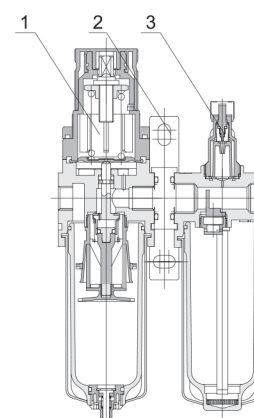


Inner structure drawing:

AC201



AC301/401/501



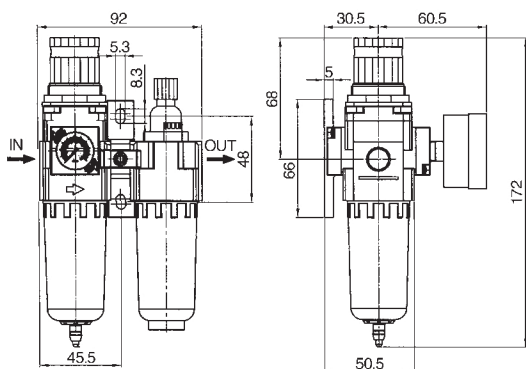
Number	Name
1	Filter Regulator
2	Connecting block
3	Lubricator

AC Air Source Treatment Unit

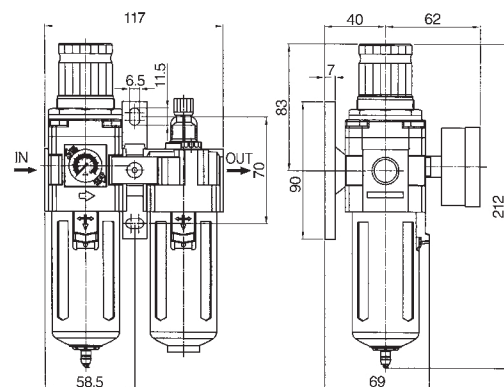
Filter Regulator+Lubricator

Dimension(mm):

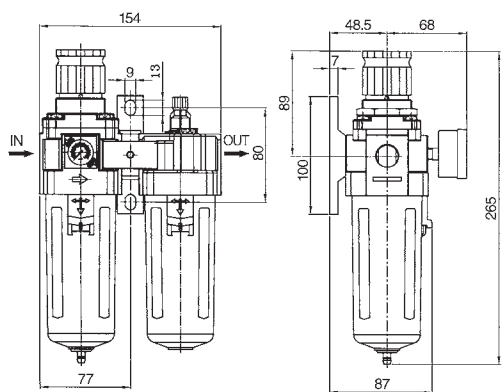
AC201A-01, 02



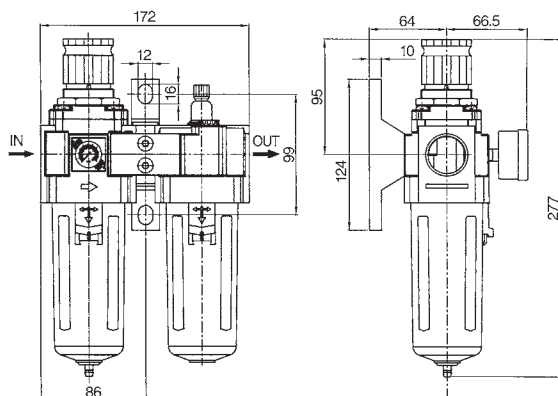
AC301A-02, 03



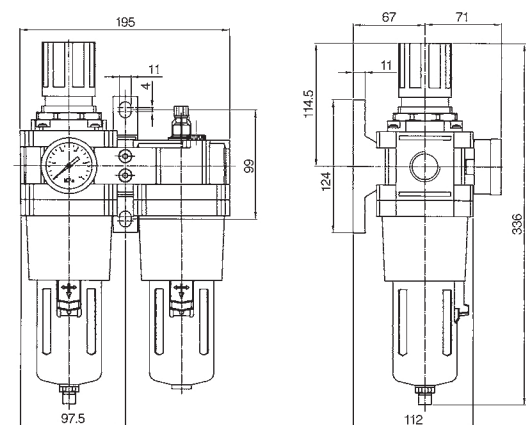
AC401A-03, 04



AC501A-06, 08



AC601A-06, 08

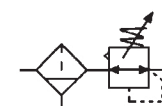


AW Air Source Treatment Unit

Filter Regulator



Symbol:

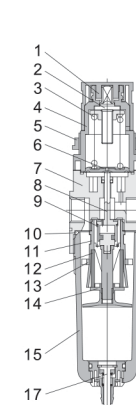


Product feature:

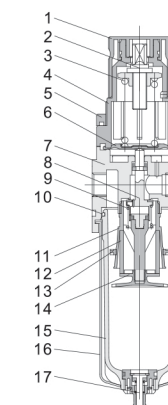
1. Hand wheel adopts the pressed self-locking mechanism to prevent the setting pressure from external disturbance and unusual action.
2. Pressure adjustment mechanism adopts the balance design with more stable adjustment and better characteristic.
3. Special guide structure makes the flowing gases spin properly to separate the water from gas and filter solid particle efficiently.
4. Filter precision 5 or 40 μm is optional.
5. Manual, differential pressure and automatic drain ways are optional.

Inner structure drawing:

AW200



AW300/400/500



Number	Name	Material
1	Hand wheel	POM
2	Lifting screw	Q235
3	Spring	Spring steel
4	Valve cover	POM
5	Nut	POM
6	Diaphragm	Q235+NBR
7	Valve body	Aluminium
8	Valve core	Brass+NBR
9	Spring	Stainless steel
10	O-ring	NBR
11	Filter core pedestal	POM
12	Filter core	Bronze
13	Impeller	Polypropylene fiber
14	Filter core pressing plate	POM
15	Water cup	PC
16	Guard cup	Q235
17	Drainer	Assembly

Specification:

Type	AW200A-01, 02	AW300A-02, 03	AW400A-03, 04	AW500A-06, 08	AW600A-06, 08
Port size(G)	1/8" · 1/4"	1/4" · 3/8"	3/8" · 1/2"	3/4" · 1"	3/4" · 1"
Gauge thread(G)	1/8"				
Fluid	Compressed air				
Operating pressure range(MPa)	0.15~0.85				
Max.Flowrate(L/min)	900	2000	3500	5000	
Ambient temperature(°C)	-10~60				
Filter precision	5μm or 40μm				
Cup material	Polycarbonate				
Guard cup	-	•	•	•	•

Note1 : The guard cup of AW200A series can be optional. Note2 : Metal cups are optional.

How to order:

