

High Current Power Inductor CPAG2222 Series

- Saturation current is up to 113 A
- Operating temperature: -55 ~ +155 °C



■ General Description

CODACA has introduced a new high current power inductor CPAG 2222 Series. The power inductor CPAG 2222 series is designed with magnetic powder core technology, which has excellent soft saturation characteristics and high current handling capability. The saturation current is up to 113 Amps.

The flat wire winding provides extremely low DC and AC resistance to achieve high power, low temperature rising, and minimize the power loss. The magnetic shielding structure with excellent ant electromagnetic interference ability to minimize the buzzer noise.

The operating temperature of CPAG 2222 series is -55 ~ +155 °C. CPAG 2222 size is 22* 22* 22 mm, the available in 13 inductance values from 1.9~10uH. Through hole mounting provides a firmer connection to the circuit board, it can be used in voltage regulator module(VRM) and DC-DC converter to save the PCB space.

■ Features



Excellent DC bias capability to handle instantaneous peak current



Flat wire winding, achieving very low DC resistance



The inductance value and dc bias characteristic are little affected by temperature



Magnetic shield structure, excellent resistance to electromagnetic interference

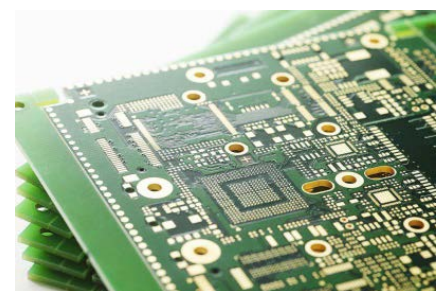
■ Applications



Voltage Regulator Module(VRM)



DC-DC Converter

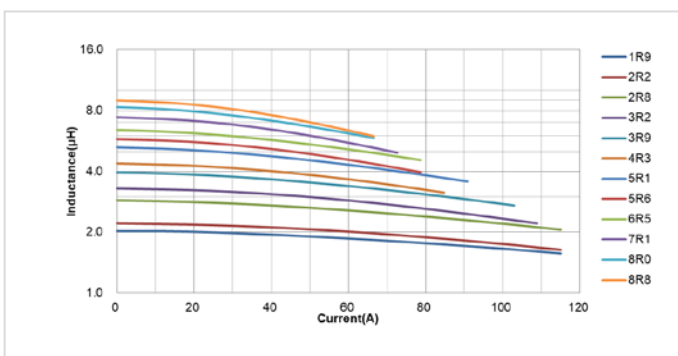


PCB Space

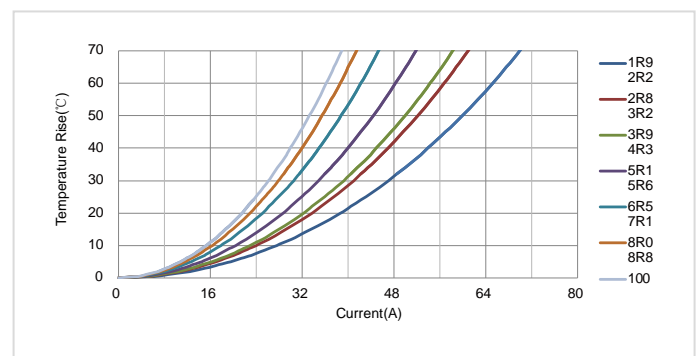
Electrical Characteristics

Part No.	Inductance (μH)	D.C.R. (mΩ)	Saturation current (A)	Temperature rise current (A)	Size LxWxH(mm)
CPAG2222-1R9MC	1.90	0.62	113	57.0	22.0X22.0X22.0
CPAG2222-2R2MC	2.20	0.62	88.0	57.0	22.0X22.0X22.0
CPAG2222-2R8MC	2.80	0.74	96.0	49.0	22.0X22.0X22.0
CPAG2222-3R2MC	3.20	0.74	76.0	49.0	22.0X22.0X22.0
CPAG2222-3R9MC	3.90	0.77	86.0	47.0	22.0X22.0X22.0
CPAG2222-4R3MC	4.30	0.77	62.0	47.0	22.0X22.0X22.0
CPAG2222-5R1MC	5.10	1.10	76.0	42.0	22.0X22.0X22.0
CPAG2222-5R6MC	5.60	1.10	59.0	42.0	22.0X22.0X22.0
CPAG2222-6R5MC	6.50	1.47	66.0	37.0	22.0X22.0X22.0
CPAG2222-7R1MC	7.10	1.47	50.0	37.0	22.0X22.0X22.0
CPAG2222-8R0MC	8.00	1.70	60.0	34.0	22.0X22.0X22.0
CPAG2222-8R8MC	8.80	1.70	46.0	34.0	22.0X22.0X22.0
CPAG2222-100MC	10.0	2.08	42.0	32.0	22.0X22.0X22.0

Current Curve



Saturation Current Curve



Temperature Rise Current Curve

Quality Management System

- IATF16949
- CNAS laboratory
- ISO9001
- ISO14001
- ISO45001

