



## FILTER CARTRIDGE FOR POWDER COATING APPLICATION

### 静电喷涂行业 专用滤筒

提高效能 · 降低成本

ENHANCE EFFICIENCY, SAVE COST

[www.rhfilter.com](http://www.rhfilter.com)



江苏人和环保设备有限公司

JIANGSU RENHE ENVIRONMENTAL EQUIPMENTS CO., LTD

地址：江苏省江阴市顾山北国解放工业园兴园路31号

邮编：214414

技术咨询：0510-86351180/86951118

销售热线：0510-86357203/86950900/86951203

传真：0510-86351997

邮件：rh@rhfilter.com

Add: No. 31 Xingyuan Road, Beiguo Industrial Park, Gushan Town, Jiangyin City,  
Jiangsu Province, China. (Zip code: 214414)

Info :86-510-86951028

Fax :86-510-86351997

E-mail: oversea@rhfilter.com

[www.rhfilter.com](http://www.rhfilter.com)

江苏人和环保设备有限公司

JIANGSU RENHE ENVIRONMENTAL EQUIPMENTS CO., LTD

# ABOUT US

## 关于我们

江苏人和由江苏人和环保设备生产基地（江阴）、江苏人和节能装备技术基地（张家港）组成。公司以改善环境，创造更加洁净的生活空间为经营宗旨，以低碳减排，节能降耗为己任，为企业提供智能化的一体化综合服务。

公司旨在打造环保产业链，形成以环保新材料、核心过滤元件、进气过滤、除尘回收四大板块产品生产为主线，打通前端和后端，延伸上下游产业链，构建综合性环保企业平台。公司产品广泛应用于光电、锂电、石化、钢铁、电力、造船、航空、建材、食品、医药、化工、玻璃、汽车、机车、电子、机械制造、家用电器等行业。我们拥有优质的材料、优秀的团队、广阔的市场应用，产品行销全国各地，出口60多个国家和地区，已成为空气滤筒过滤及除尘行业的国内龙头企业之一。

公司成立至今一直保持着快速增长势头，公司主要产品被认定为江苏省高新产品、无锡市知名商标，并获得 CE 认证，公司获得江苏省高新技术企业、江苏省民营企业、江苏省科技型中小企业、江苏省专精特新中小企业、江阴市重点骨干企业、三星企业，科技人才和品牌建设先进企业等荣誉。

公司自成立以来，一直以“科技创新引领未来，打造自主诚信品牌”作为公司的管理理念，在产品的每个环节上精益求精，注重产品技术研发和质量的提升，把更加优质的产品提供给客户。为此，企业建立了无锡市高效节能除尘过滤工程技术中心，聘请行业专家为技术顾问，开展各项研究开发活动。企业始终从源头材料上抓起，整合资源，与名校、研究所和国际优质材料商通力合作，优化在应用领域方面的使用，对新兴市场产品的前沿开发运用，不断增强产品的技术和科技含量；其次成功实现了对大型燃机入口过滤的优化、改造，并承担国家重点改造项目，为多家大型国企燃机发电机组运行降本节支；此外，在对有毒、有害、易燃、易爆粉尘行业的治理过程中，人和采用高端热覆、纳米、阻燃、防静电滤材、优化过滤元件等来解决新能源行业硅、锂、铅、铝、镁、锌等特殊粉体的治理。

Jiangsu Renhe is composed of two production bases, one is in Jiangyin city, which is Jiangsu Renhe Environmental Equipments Co., Ltd., the other is in Zhangjiagang city, which is Jiangsu Renhe Hi-tech Co., Ltd. Company Tenet: Improve environment, build up cleaner living environment. Cmpany Mission: Lowern dust outlet emission and carbon emission, and save energy consumption, offer intelligent integrate service for the customers.

Jiangsu Renhe aims to build an ecological chain of environmental protection industry, so as to form four mian production lines of environment friendly new material, core filter elements, air intake filtration, dust collection, and offer integrate products and service to the customers. Products of Jiangsu Renhe are widely applied in the industry of Photoelectric, lithium, petrochemical, iron and steel, electric power, shipbuilding, aviation, building materials, food, medicine, chemical, glass, automobile, locomotive, electronics, machinery manufacturing, household appliances and other industries. Renhe advantage: High-end, reliable quality filter media, know-how team, rich product application experience. And products have been supplying to home and abroad, exporting to more than 60 countries. Jiangsu Renhe is one of China air intake filter and dust collection leading companies.

Set up in 2004, Jiangsu Renhe has been keep growing. Main products are regarded as "Jiangsu Province Hi-tech Products" "Wuxi City Famous Trademark" "CE Approved Products", and Jiangsu Renhe is awarded many famous rputation due to excellent and reliable performance.

Jiangsu Renhe has been focus on products quality control, R&D, to offer better quality, and more suitable products to the customers. Therefore, Jiangsu Renhe builds up Wuxi City Hi-tech Filtration Engineering and Technology Center, recruits experts as consults, to develop research and development activity. Based on Jiangsu Renhe platform, starts from raw material, Jiangsu Renhe has been integrating resources, cooperating with universities, institutes, and filter media manufacturers, to retrofit products, and retrofit products application. Furthermore, Jiangsu Renhe has been developing products for emerging markets, to enhance Jiangsu Renhe's products technology and science value. Also Jiangsu Renhe undertakes large gas turbine filter houses retrofit projects, national key renovation projects, and the retrofit projects have helped many companies save energy consumption. Jiangsu Renhe has rich experience on the dust solution for toxic, harmful, flammable, explosive dust, too, and applies high-end thermal PTFE Membrane, Nanoweb, Flame Retardant, Antistatic media, retrofitted filter elements to deal with silicon, lithium, lead, aluminum, magnesium, zinc etc. special dust in new energy industry.

# PTFE Membrane Filter Media Introduction

## 覆膜滤材介绍

### 进口覆膜滤材特点

#### Import PTFE Membrane Filter Media Feature

● 热电融合 Thermoelectricity fuse PTFE Membrane technique	● 多孔 Porous	● 超细纤维 / 小孔径 Superfine fiber / Tiny pore	● 超光滑 & 不粘性 Super smooth & Non-sticky performance	● 超薄 Ultra-thin
● 牢固不脱落 PTFE Membrane is firm, and won't drop off	● 亲油性(粉尘不能含有油) Lipophilicity (The dust cannot contain oil)	● 稳定的化学性质 Stable chemical property	● 保持了良好的透气性 Maintained good air permeability	● 表面过滤原理 Surface filtration
● 出众的清灰效果 Outstanding dust cleaning effect	● 疏水性 Hydrophobicity	● 蒸汽穿透性 Steam penetration	● 热稳定性 Thermal stability	

### 国产覆膜滤材与进口材料相比

#### Compared with Import PTFE Membrane, the local PTFE Membrane filter media is

● 胶水粘合 PTFE Membrane is glue bond	● 阻力比进口覆膜大很多 Resistance is higher	● 膜容易脱落 PTFE Membrane is not as firm as import one	● 热稳定性能差 Poor thermal stability	● 化学稳定性能差 Poor chemical stability
● 精度偏低 Lower filter efficiency	● 使用寿命短 Shorter service life	● 透气度差 Poor air permeability		

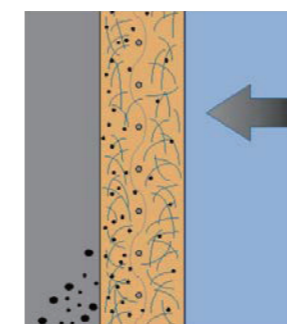
### 覆膜滤材的优特点

#### PTFE Membrane Filter Media Advantage

● 表面过滤原理 Surface filtration	● 过滤效率高 High filter efficiency	● 容易清灰 Dust clean is easy	● 初始阻力低 Low initial resistance	● 低阻力运行 Low DP operation	● 节约能耗 Save energy consumption
--------------------------------	-----------------------------------	------------------------------	-----------------------------------	-----------------------------	-----------------------------------

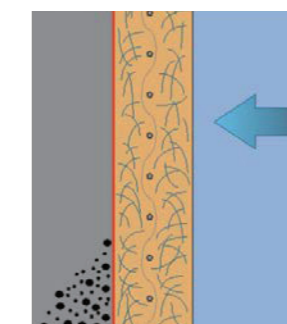
### 普通滤材过滤原理

#### Conventional filter media filtration principle



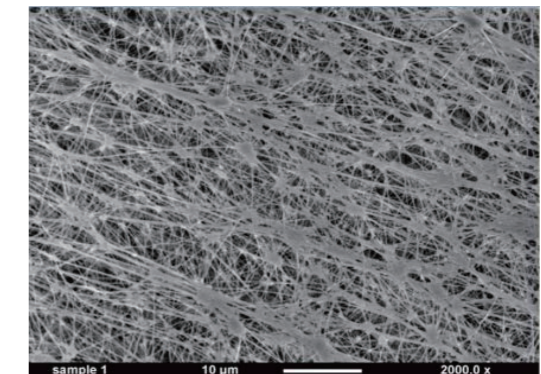
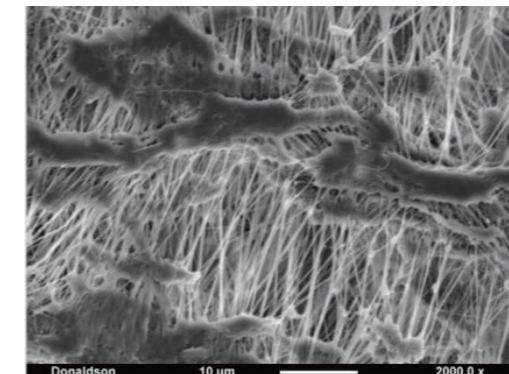
### 覆膜滤材过滤原理

#### PTFE Membrane filter media filtration principle



### PTFE 覆膜对比

#### PTFE Membrane Comparison



### 进口覆膜

#### Import PTFE Membrane Filter Media

### 其他厂家覆膜滤材

#### Other Manufacturer PTFE Membrane Filter Media





# Filter Cartridge Introduction

## 滤筒介绍



# Rotary Wing, Nozzle, Powder Pipe, HEPA

## 旋转翼、喷嘴、粉管、高效过滤器

滤筒型号 Model	过滤介质 Filter Media	上盖外径A Top Cap OD A	上盖外径B Top Cap OD B	上盖外径C Top Cap OD C	安装小孔D Mount hole D	高度L Height
RH/P3260	长纤维聚酯 Spun bond polyester 长纤维聚酯作防静电处理 Polyester with Antistatic	324mm	324mm	213mm	14mm/--	600mm
RH/F3266	长纤维聚酯+PTFE处理 Polyester with PTFE Membrane	324mm	324mm	213mm	14mm/--	600mm
RH/Z3266	复合纤维 Cellulose blend polyester 纳米纤维 Cellulose blend polyester with Nanoweb	324mm	324mm	213mm	14mm/--	660mm
RH/P3266	长纤维聚酯 Spun bond polyester 长纤维聚酯作防静电处理 Polyester with Antistatic	324mm	324mm	213mm	14mm/--	660mm
RH/F3266	长纤维聚酯+PTFE处理 Polyester with PTFE Membrane	324mm	324mm	213mm	14mm/--	660mm
RH/Z32915	复合纤维 Cellulose blend polyester 纳米纤维 Cellulose blend polyester with Nanoweb	324mm	324mm	213mm	14mm/--	915mm
RH/P32915	长纤维聚酯 Spun bond polyester 长纤维聚酯作防静电处理 Polyester with Antistatic	324mm	324mm	213mm	14mm/--	915mm
RH/F32100	长纤维聚酯+PTFE处理 Polyester with PTFE Membrane	324mm	324mm	213mm	14mm/--	1000mm

备注: 适用机型: 金马、瓦格纳、诺信等  
Remark: Fit GEMA, Wagner, Nordson, etc. booth filtration use

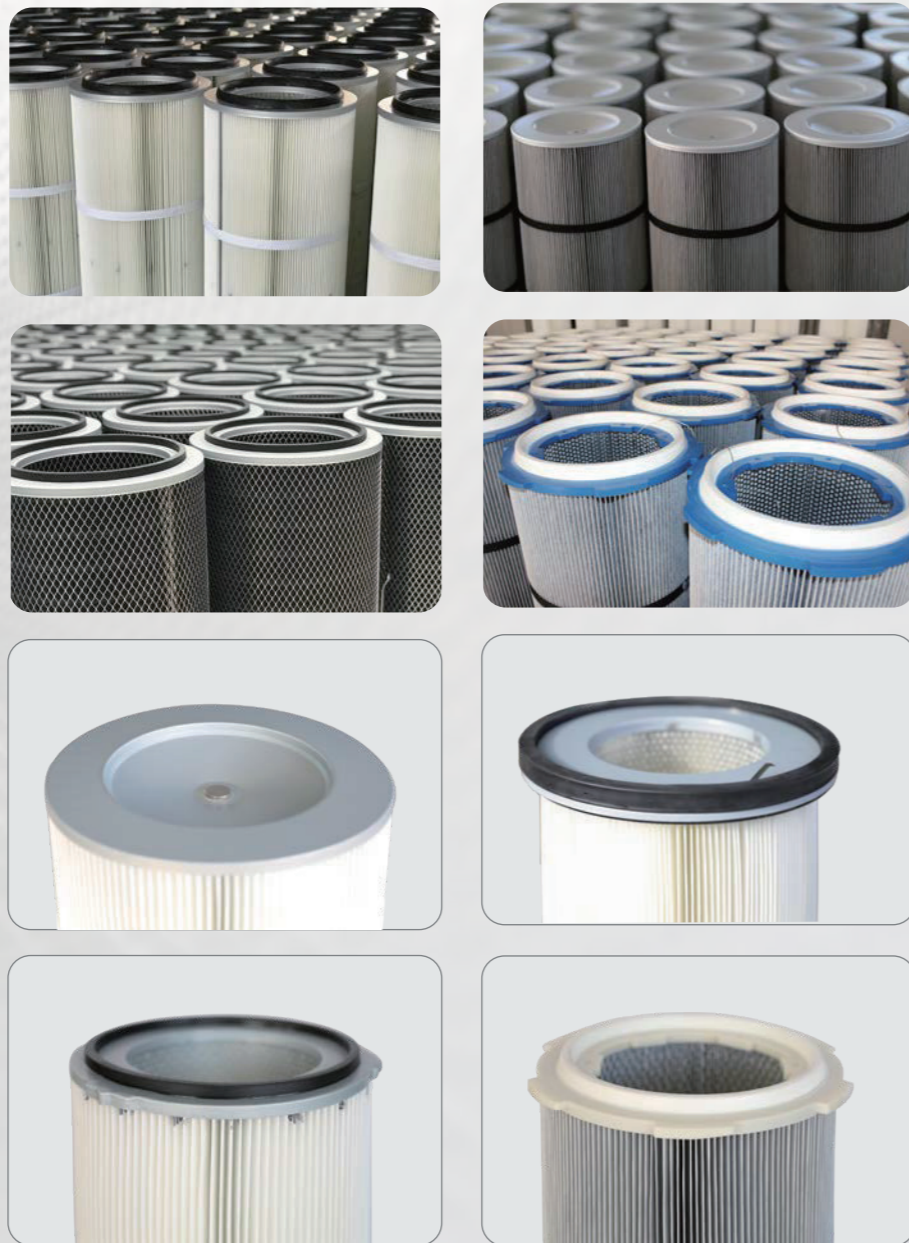




# Product Pictures

## 产品图片

根据各种机型可选多种不同的安装方式  
The filter cartridge can be tailor-made for different machine mount design



# Test Report

## 测试报告

国电检测报告

美国AFIL测试报告

美国HV测试报告

同济大学测试报告

### 覆膜滤料过滤效率参数: PTFE Membrane Filter Media Filter Efficiency Parameter

过滤状态 Under filtration condition	刚开始工作中 Under initially work condition	正常工作状态中 Under normal operation condition
过滤风速: Filter Velocity (m/min)	3m/min	
压差 Pressure Drop (Pa)	317.2	368.5
粉尘颗粒大小 Dust Particle Size (um)	过滤效率(%) Filter Efficiency (%)	
0.3-0.5	99.978	99.986
0.5-0.7	99.988	99.996
0.7-1.0	99.994	100.00
1.0-2.0	100.00	100.00
2.0-3.0	100.00	100.00
3.0-5.0	100.00	100.00