



JIANGSU RENHE ENVIRONMENTAL EQUIPMENTS CO., LTD

No. 31 Xingyuan Road, Jiefang Industrial Park, Gushan Town,
Jiangyin City, Jiangsu Province, China

Tel.: +86-510-86357203 Fax: +86-510-86351997

E-mail: oversea@rhfilter.com

DUST COLLECTION SOLUTIONS AND FILTER ELEMENTS

Jiangsu Renhe Environmental Equipments Co., Ltd



CONTRIBUTE TO A CLEANER WORLD PROTECT SAFETY AND HEALTH

MANUFACTURING BASE

RENHE is composed of JIANGSU RENHE ENVIRONMENTAL EQUIPMENTS CO., LTD. and JIANGSU RENHE HI-TECH CO., LTD two manufacturing base.

PRODUCT RANGE:

Dust collectors (Cartridge dust collectors, bag houses, bin vents, industrial vacuum cleaners, etc.) and their accessories (Air filter cartridges, pleated bag filters, etc.)

Air intake houses, and their accessories

CERTIFICATES:

ISO9001:2015, ISO45001, ISO14001, CE



SURFACE
PREPARATION



WELDING
& CUTTING



ADDITIVE
MANUFACTURING



RH / HY SERIES WELDING FUME DUST COLLECTOR

FEATURES

- Suitable for different welding station design;
- Import components are used;
- Large air flow, low noise level, good performance of fume/dust extraction;
- High filter efficiency, low outlet emission;
- PLC microcomputer control reaches automatic dust cleaning effect;
- Convenient in operation, and mobile with wheels, can move to any needed work station;
- Extraction arm options:
Outer support steel structure extraction hood (with air flow regulating damper), or inner support extraction arm.



APPLICATION

- Welding fume
- Cutting fume
- Grinding dust

TECHNICAL SPECIFICATION

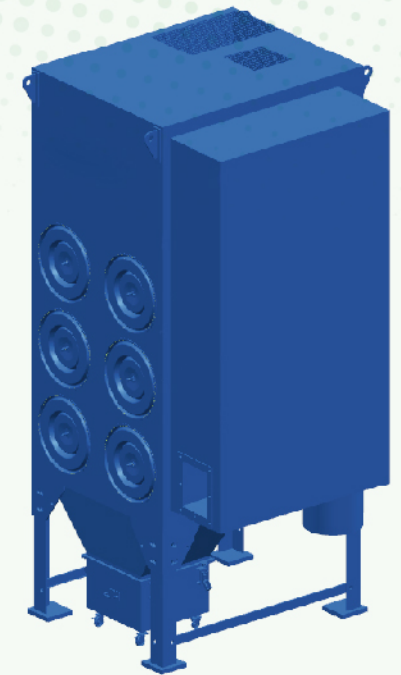
Name	RH/HY-150	RH/HY-200	RH/HY-300
Filter area	10/20	10/20	20/40
Size of filter cartridge	Φ350*660	Φ350*660	Φ350*660
Air flow	1500	2000	3500
Power	2.2KW	3.0KW	4.0KW
Qty of extraction arm	1	1/2	1/2
Size(width*depth*height)	740*1147*1286	740*1147*1286(without HEPA) 740*1147*1636(without HEPA)	740*1147*1726

RH / XE SERIES INTEGRATE CARTRIDGE DUST COLLECTOR

RH/XE Series dust collector,
which is integrate design, integrate with

- filtration plenum,
- fan with motor,
- fan silencer box,
- insertable or separate control cabinet.

It is suitable to deal with fume and dust from cutting, welding, grinding etc. process.



APPLICATION

- Laser cutting
- Plasma cutting
- Metal welding
- Metal grinding

TECHNICAL SPECIFICATION

Name	Air Flow	F.C. Q'TY	Filter Area	Motor Power	Weight	Dimensions mm		
	m³/h	PCS	m²	KW	Kg	C+D	B	A
RH/XE-3	2500	3	30/60	4	600	1287	1290	2460
RH/XE-4	3200	4	40/80	5.5	650	1347	1290	2465
RH/XE-6	5100	6	60/120	7.5	730	1424	1290	2918
RH/XE-8	6500	8	80/160	11	900	1529	2206	3217
RH/XE-12	8000	12	120/240	11	1150	1577	2206	3669
RH/XE-18	12000	18	180/360	15	1750	2186	2206	3769
RH/XE-24	15000	24	240/480	18.5/22	2000	2236	2206	4226

RH / XLC-II HORIZONTAL LOADED CARTRIDGE FILTER

The filter elements are filter cartridge with big pleat depth and filter area.

FEATURES

- Advanced downflow cartridge distribution and horizontal loaded method, the dust-cleaning efficiency is fairly good during normal working conditions.
- There is an anti-abrasion baffle in the dirty air inlet to prevent the air from hitting the cartridge directly to prolong its service life;
- 15° inclined drawer installation method makes the replacement easy, and no transmission parts inside the body reduce the maintenance work at most.
- For ordinary dust, filter cartridge can work a long term and no need to be replaced frequently compared with the bag filter;
- Modular design makes it easy to assemble a bigger one without much changes to original equipments.



APPLICATION

Different kinds of dry dust, especially the low dust density inlet dust extraction.

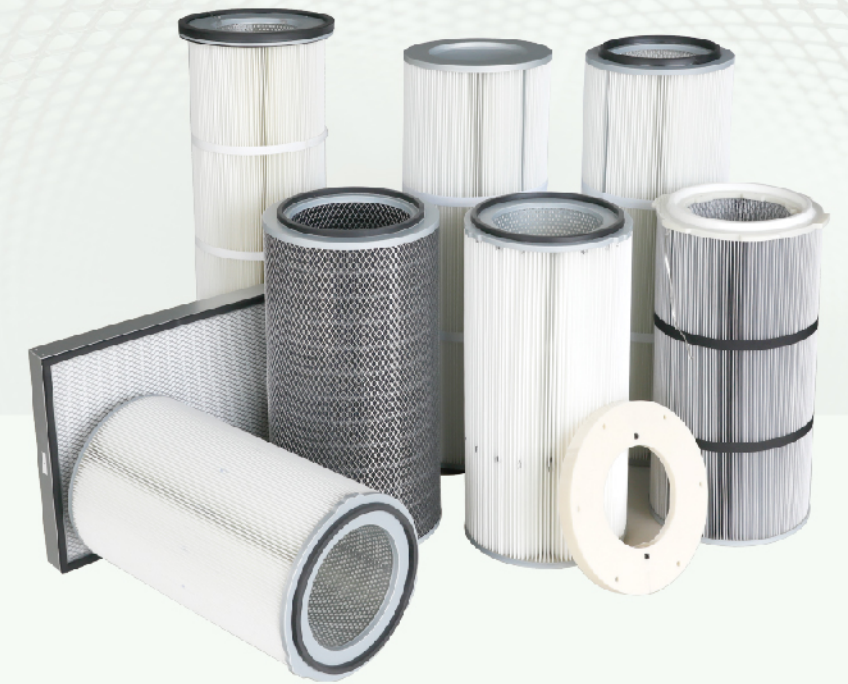
Application industries: shipping building, tobacco, machinery casting, pharmaceutical, steel, petrochemical industry, chemical industry, etc.

TECHNICAL SPECIFICATION

Type	Air Flow m³/h	Filter Area m²	Qty of Filter Cartridge PCS	Working Resistance Pa	Filter Efficiency %	Height mm	Width mm	Depth mm	Gross Weight Kg
RH/XCL 2-8 II	3300-7500	184	8	initial resistance 120-250	99.99	3175	1016	2159	841
RH/XCL 3-12 II	5000-11250	276	12		99.99	3632	1016	2159	1105
RH/XCL 4-16 II	6600-15000	368	16		99.99	4115	1016	2159	1164
RH/XCL 3-24 II	10000-22000	552	24	working resistance 500-700	99.99	3632	2032	2159	1695
RH/XCL 4-32 II	13500-30000	736	32		99.99	4115	2032	2159	2032
RH/XCL 3-36 II	15000-33500	828	36		99.99	3632	3048	2159	2377
RH/XCL 3-48 II	20000-45000	1104	48	final resistance 500-700	99.99	3632	4046	2159	3136
RH/XCL 4-48 II	20000-45000	1104	48		99.99	4115	3048	2159	2859
RH/XCL 4-64 II	20000-45000	1472	64		99.99	4115	4064	2159	3700

Note: Above specification is based on the filter cartridge made of HV company 80%cellulose+20%polyester, several filter precisions available. Also other kinds of filter media for your choice according to the working conditions: PTFE Membrane, antistatic, water&oil resistance and fire-resistance. Manual of filter cartridge spare parts for your reference.

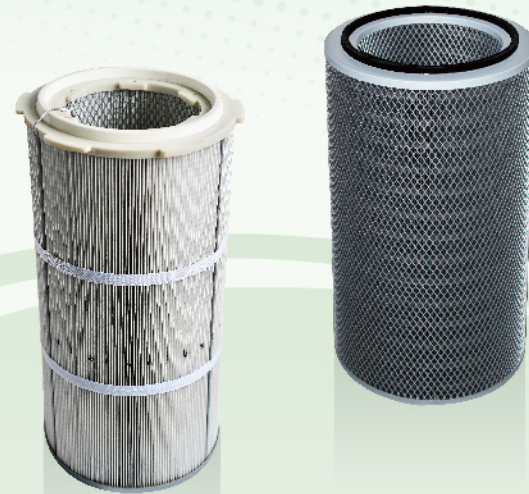
FILTER CARTRIDGE



TECHNICAL SPECIFICATION

Type	Top Cap OD A mm	Top Cap OD B mm	Top Cap OD C mm	Mount hole D mm	Height mm
RHZ3566	350	350	241	16	660
RH/P3260	324	324	213	14/--	600
RH/Z3266	324	324	213	14/--	660
RH/Z32915	324	324	213	14/--	915
RH/F32100	324	324	213	14/--	1000
RHS33137	PCD 393	324	213	closed	1000

FILTER MEDIA



Filter media model	Base media (Weight)	Base media	Thickness mm	Permeability L/m ² S	Continuous working temperature °C	After-treatment	Filter efficiency	Antistatic Ω	Flame retardant	Acid and alkali resistant	Remark
RH-Z-128-NWFRCD	145	Cellulose blend polyester filter media	0.65	150	82	Nanofiber with PTFE Membrane	F9	< 10 ⁹	FI	No	
RH-F-306	260	PET	0.7	22-44	130	PTFE Membrane	E10-12			No	
RH-F-308-CD	265	PET	0.7	20-30	130	PTFE Membrane	E10-12	< 10 ⁹		No	
RH-F-341-CDFR	270	PET	0.7	18-30	130	PTFE Membrane	E10-12	< 10 ⁹	HF-1	No	
RH-F-311	270	PET	0.7	28-48	130	PTFE Membrane	E11	No		No	
RH-F-312	240-340	PET	0.7	19-38	130	PTFE Membrane	E13	No		No	
RH-F-313-CD	220-360	PET	0.7	12-22	130	PTFE Membrane	E13	< 10 ⁹		No	
RH-F-340-CD Grid antistatic + PTFE Membrane	310	PET	1.0	25-75	130	PTFE Membrane	E10-12	< 10 ⁹		No	
RH-F-344-CD Carbon impregnated antistatic + PTFE Membrane	260	PET	1.0	30-65	130	PTFE Membrane	E10-12	< 10 ⁹		No	
RH-F-343-FRCD Flame retardant + antistatic + PTFE Membrane	360	PET	1.0	25-75	130	PTFE Membrane	E10-12	< 10 ⁹		No	No
RH-F-346 PTFE Membrane	310	PET	1.0	25-75	130	PTFE Membrane	E10-12	No		No	
RH-F-347-FR Flame retardant + PTFE Membrane	360	PET	1.0	25-75	130	PTFE Membrane	E10-12	No		Excellent	
PPS/PPS 400 Compleat Pro	400	PPS	1.0	25-75	190	PTFE Membrane	E10-12	No			High humidity

PTFE MEMBRANE FILTER MEDIA

IMPORT PTFE MEMBRANE FILTER MEDIA FEATURES

- Thermally fused
 - Porous
 - Super fine fiber / tiny pore
 - Smooth and non-sticky faced
 - Reliable thermostability
 - Super thin membrane
 - PTFE Membrane is firm, and non-dropping
 - Lipophilicity (Dust cannot contain oil)
 - Hydrophobicity
 - Reliable chemical property
 - Kept good permeability
 - Surface filtration
 - Excellent dust cleaning performance
 - Option: Sainless steel material end caps and liner, or do other treatment
 - Vapor penetration
 - Convenient in installation
- Import grid antistatic + PTFE Membrane filter media, compared with conventional aluminum-coating antistatic, it is with better filtration efficiency, better stability, longer service life.

COMPARED WITH IMPORT PTFE MEMBRANE FILTER MEDIA THE CONVENTIONAL PTFE MEMBRANE FILTER MEDIA FEATURES

- Glue bond
- Lower filtration precision
- Higher resistance
- Shorter service life
- Membrane is easily drop
- Poor permeability
- Poor thermostability
- Poor chemical property

PTFE MEMBRANE FILTER MEDIA ADVANTAGE



Surface filtration



High filter efficiency



Good on dust cleaning performance



Low initial resistance

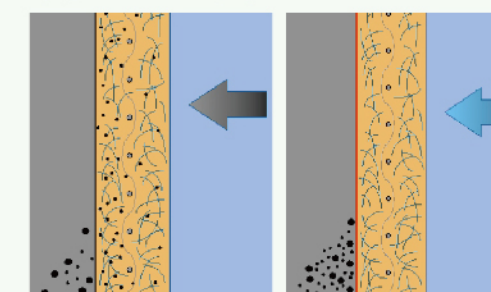


Low working resistance



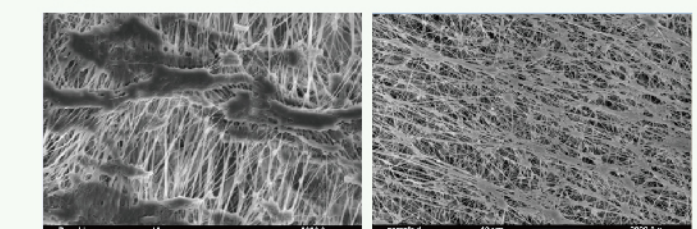
Low energy consumption

FILTRATION PRINCIPLE COMPARISON



Ordinary filter media filtration principle PTFE membrane filter media filtration principle

PTFE MEMBRANE COMPARISON



Import PTFE membrane Other companies' PTFE membrane filter media

RHCCAF PRODUCTS

