

Wi-Fi Plug Pro

Quick Installation Guideline

2. Wireless Router Connection

2.1 Download APP

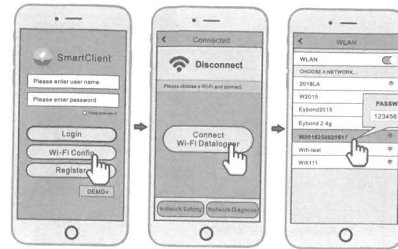
① Scan the QR Code on the right side and download the APP.



iOS



Android

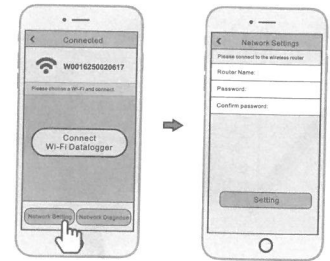


2.2 Connect Wi-Fi Datalogger

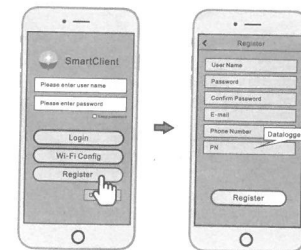
- ① Open the APP, tap the **Wi-Fi Config** button to enter this page.
- ② Tap the **Connect Wi-Fi Datalogger** button on the Connected page (Android phone has no need of this step).
- ③ Select the same number of Wi-Fi Plug Pro PN to connect. (Initial Password: 12345678)

2.3 Network Setting

- ① After the connection completes, tap the **Network Setting** button.
- ② According to the prompts, type in the information to finish the network setting.
- ③ Reconnect the Wi-Fi or Cellular Data which can surf the Internet instead of the Wi-Fi connected by step 2.2.



3. Create Account And Plant

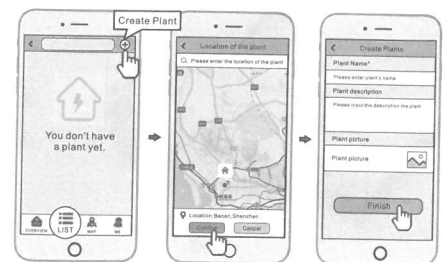


3.1 Create Account

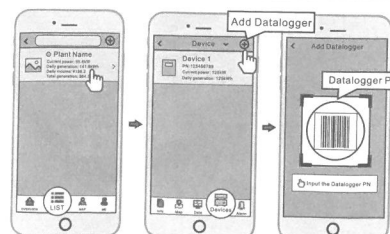
- ① Open the APP, tap the **Register** button to enter this page.
- ② According to the prompts, type in the information to create an account.

3.2 Create Plant

- ① Login the account and click the **list** button on the bottom of the home page.
- ② Tap the "+" button on the top-right corner of the list page
- ③ According to the prompts, type in the information to finish creating plant.



Note: One account can create multiple plants and one plant can add multiple dataloggers. If you only have one datalogger, you could ignore this step.



3.3 Add Multiple Dataloggers

- ① Tap the new plant you just created, and enter its home page.
- ② Click the **Device** button on the bottom of the home page.
- ③ Tap the "+" button at the top-right corner to add the datalogger.
- ④ Scan the datalogger PN on the Wi-Fi Plug Pro, or input it manually.

1. Installation

- ① Find the corresponding interface code on the right table, according to the model of the datalogger.
- ② Based on the corresponding icon, finish the installation according to the interface code.
- ③ Confirm the status of the LED light (After step 2.3, when 4 LED light keep on, showing the normal working status).

Datalogger Model	Interface Code	Interface Icon
Wi-Fi Plug Pro - 01/11 (Method 1)	①	
Wi-Fi Plug Pro - 04 (Method 2)	②	
Wi-Fi Plug Pro - 02/10/16	③	
Wi-Fi Plug Pro - 07	④	
Wi-Fi Plug Pro - 03/05/06/08/12/13/14/15	④	

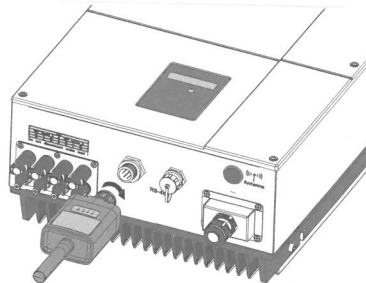
①

- Method 1 :**
- ① Connect the 4PIN power cable of the Wi-Fi Plug Pro to the inverter.
 - ② Fasten the Wi-Fi Plug Pro to the inverter with the screw.

- Method 2 :**
- ① Connect the 2 PIN green interface of the Wi-Fi Plug Pro to the RS-485 terminal of the inverter.
 - ② Connect the 5PIN power cable of the Wi-Fi Plug Pro to the inverter.
 - ③ Fasten the Wi-Fi Plug Pro to the inverter with the screw.

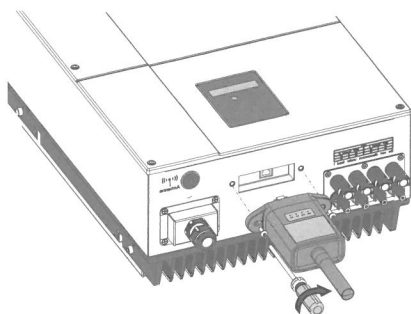
②

- ① Align the 4-hole aviation plug of the Wi-Fi Plug Pro with the inverter and plug it in.
- ② Tighten the nut of the Wi-Fi Plug Pro to the inverter.



③

- ① Align the RJ-45 crystal head of the Wi-Fi Plug Pro with the inverter and insert it in tightly.
- ② Fasten the Wi-Fi Plug Pro to the inverter



④

- ① Align the serial port of the Wi-Fi Plug Pro with the inverter and plug it in tightly.
- ② Fasten the Wi-Fi Plug Pro to the inverter with the screw.

