



# Micro Dc Motor

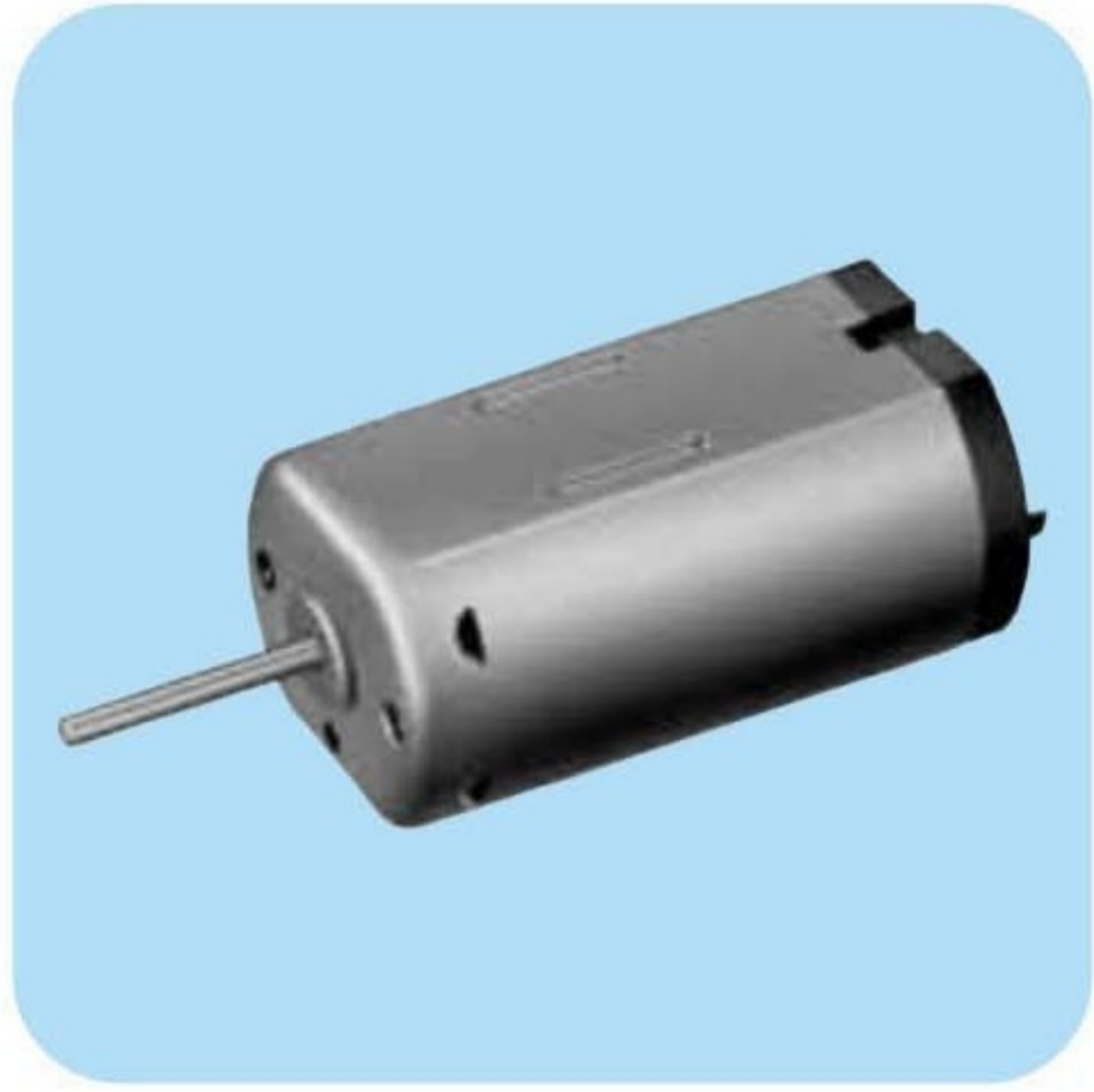
## FF-N30

### Application

**Toys and Models :** Motorized Toy / Motorized Plastic Model / Radio Control Model

**Precision Instruments :** Camera

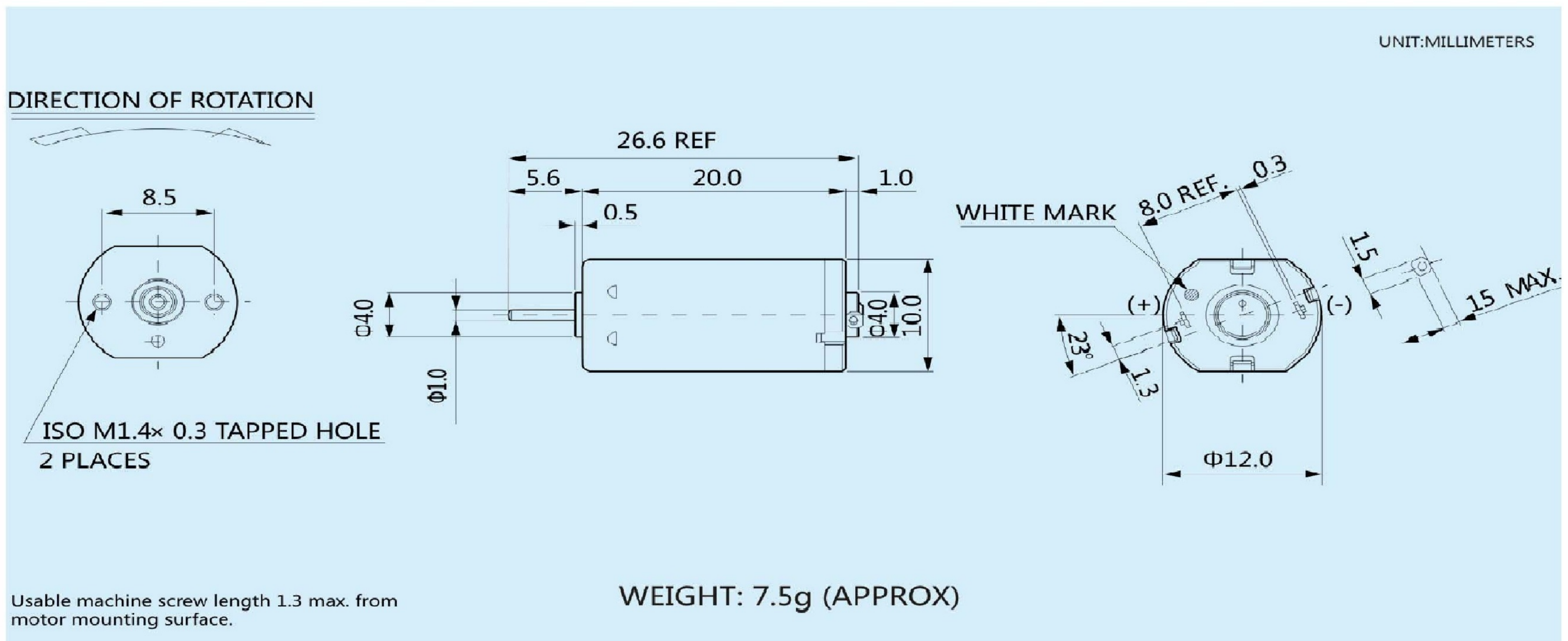
### Electrical Specification



型号 MODEL	电压 VOLTAGE		无负荷 NO LOAD		最大效率点 AT MAXIMUM EFFICIENCY				起动 STALL			
	使用范围 OPERATING RANGE	额定值 NOMINAL	转速 SPEED	电流 CURRENT	转速 SPEED	电流 CURRENT	转矩 TORQUE		功率 OUTPUT	转矩 TORQUE		电流 CURRENT
			r/min	A	r/min	A	mN·m	g·cm	W	mN·m	g·cm	A
FF-N30VA-09210	DC 2~5V	DC 2.5V	5200	0.019	4040	0.066	0.18	1.8	0.075	0.80	8.2	0.23

马达性能及转轴长度可按客户的需要设定。  
Motors specification and shaft length can be tailor-made according to customer's requirements.

### Mechanical Dimensions



### FF-N30VA-09210

2.5V

