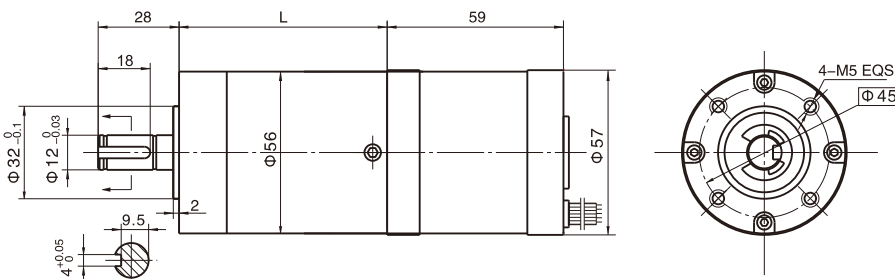




PG56/57ZWN55 BLDC GEAR MOTOR



● 外形和安装尺寸 Dimensions



● 无刷电动机主要技术参数 Brushless Motor Technical Data

电机型号 TYPE	额定电压 Rated voltage VDC	空载转速 No-load speed r/min	空载电流 No-load current mA	额定转速 Rated speed r/min	额定转矩 Rated torque mN.m	输出功率 Output power W	额定电流 Rated current A
57ZWN55-2420	24	2000	200	1300	85	10	1.2
57ZWN55-2430	24	3000	400	2250	110	25	2.0

● 无刷行星齿轮减速电机主要技术参数 Brushless Gear Motor Technical Data

配置57ZWN55-2420无刷直流电机 (57ZWN55-2420 BLDC Motor)

减速比	Reduction ratio	3.6	4.25	13	15	18	32	47	55	65	76	168	198	234	276	326
减速级数	Number of gear trains	1	1	2	2	2	2	3	3	3	3	4	4	4	4	4
减速器长度(L)	Length(L)	mm	41	41	53	53	53	53	64	64	64	64	76	76	76	76
空载转速	No-load speed	r/min	556	471	154	133	111	63	43	36	31	26	12	10	8.5	7.2
额定转速	Rated speed	r/min	333	282	100	87	72	41	28	24	20	17	7.7	6.6	5.6	4.7
额定转矩	Rated torque	N.m	0.27	0.32	0.9	1.0	1.2	2.2	2.9	3.4	4.0	4.7	9.3	11	13	15
最大瞬间允许负载	Max. permissible load in a short time	N.m	25	25	25	25	25	50	50	50	50	60	60	60	60	60

配置57ZWN55-2430无刷直流电机 (57ZWN55-2430 BLDC Motor)

减速比	Reduction ratio	3.6	4.25	13	15	18	32	47	55	65	76	168	198	234
减速级数	Number of gear trains	1	1	2	2	2	2	3	3	3	3	4	4	4
减速器长度(L)	Length(L)	mm	41	41	53	53	53	53	64	64	64	64	76	76
空载转速	No-load speed	r/min	833	706	231	200	167	94	64	55	46	39	18	15
额定转速	Rated speed	r/min	625	529	173	150	125	70	48	41	35	30	13	11
额定转矩	Rated torque	N.m	0.4	0.4	1.2	1.3	1.6	2.9	3.8	4.4	5.2	6.1	12	14
最大瞬间允许负载	Max. permissible load in a short time	N.m	6	6	25	25	25	25	50	50	50	50	60	60