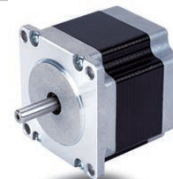




# Hybrid Stepper Motor

23HS (57mm) Series, 1.8 deg/step

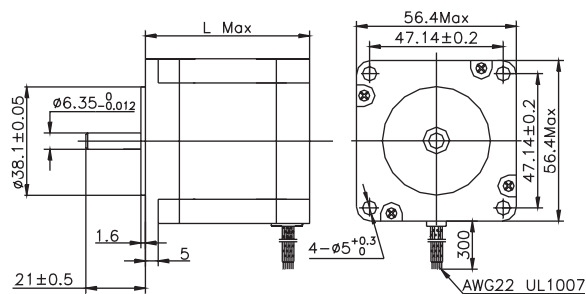


## Electrical Specification

Model	Step Angle (°)	Motor Length (mm)	Rated Current(A)	Phase Resistance(Ω)	Phase Inductance(mH)	Holding Torque (N.mMin)	Detent Torque (N.cmMax)	Rotor Inertia (g.cm <sup>2</sup> )	Lead Wire (No.)	Motor Weight(g)
23HS0405	1.8	41	0.62	12	24	0.55	2.5	150	4	470
23HS0408	1.8	41	2.0	1.2	2.5	0.55	2.5	150	4	470
23HS4412	1.8	45	0.62	12	26	0.8	2.8	190	4	520
23HS4425	1.8	45	2.5	1.0	2.2	0.8	2.8	190	4	520
23HS5406	1.8	51	0.62	13	28	1.0	2.8	190	4	520
23HS5425	1.8	51	2.5	1.2	3.2	1.0	2.8	190	4	520
23HS6602	1.8	56	1.5	3.2	5.5	0.9	3.5	280	6	590
23HS6430	1.8	56	3.0	0.8	2.4	1.1	3.5	280	4	680
23HS6404	1.8	56	4.2	0.4	1.2	1.1	3.5	280	4	680
23HS7401	1.8	64	1.0	7.5	20	1.5	5.0	380	4	850
23HS7430	1.8	64	3.0	0.8	2.3	1.5	5.0	380	4	850
23HS7404	1.8	64	4.2	0.55	1.2	1.5	5.0	380	4	850
23HS8430	1.8	76	3.0	1.0	3.5	1.8	6.0	440	4	1050
23HS8404	1.8	76	4.2	0.6	1.8	1.8	6.0	440	4	1050
23HS1430	1.8	100	3.0	1.4	5.5	2.5	10	680	4	1250
23HS1404	1.8	100	4.2	0.8	3.0	2.5	10	680	4	1250
23HS2430	1.8	112	3.0	1.6	6.8	2.8	12	800	4	1400
23HS2404	1.8	112	4.2	0.9	3.8	2.5	12	800	4	1400

\* Note: It's only typical technical data, special requirement can be customized.

## Mechanical Dimensions



## Description:

Model	Motor Length
23HS0xxx	41mm
23HS4xxx	45mm
23HS5xxx	51mm
23HS6xxx	56mm
23HS7xxx	64mm
23HS8xxx	76mm
23HS1xxx	100mm
23HS2xxx	112mm

## Wiring Diagram

