

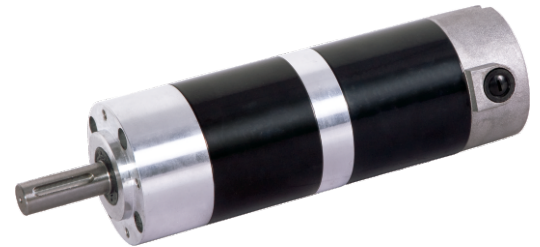
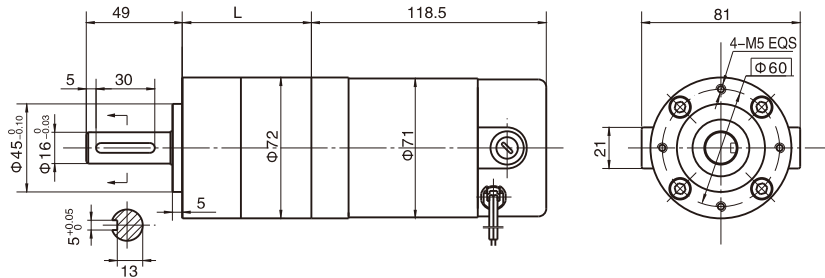


DC Planetary Gear Motor

PG72-71ZY110

Φ72 行星齿轮减速器, 允许转矩范围: 85 N.m
72mm OD Planetary Gearhead,
Permissible Load Range: 85 N.m

● 外形和安装尺寸 Dimensions



● 电动机主要技术参数 Motor Technical Data

电机型号 TYPE	额定电压 Rated voltage VDC	空载转速 No-load speed r/min	空载电流 No-load current A	额定转速 Rated speed r/min	额定转矩 Rated torque mN.m	输出功率 Output power W	额定电流 Rated current A	堵转力矩 Stall torque N.m	堵转电流 Stall current A
71ZY110-2420	24	2000	0.40	1600	200	33	2.4	1.0	9.5
71ZY110-2430	24	3000	0.50	2600	240	59	3.5	1.2	14

● 齿轮减速电机主要技术参数 Gear Motor Technical Data

配置71ZY110-2420直流电机 (71ZY110-2420 DC Motor)

减速比 Reduction ratio	4	7	14	19	27	35	46	68	82	100	124	150	195	308
减速级数 Number of gear trains	1	1	2	2	2	2	2	3	3	3	3	3	3	3
减速器长度(L) Length(L) mm	56	56	75.5	75.5	75.5	75.5	75.5	95.5	95.5	95.5	95.5	95.5	95.5	95.5
空载转速 No-load speed r/min	500	286	143	105	74	57	43	29	24	20	16	13	10	6
额定转速 Rated speed r/min	400	229	114	84	59	46	35	24	20	16	13	11	8	6
额定转矩 Rated torque N.m	0.72	1.3	2.3	3.1	4.4	5.7	7.5	9.9	12	15	18	22	28	45
最大瞬间允许负载 Max. permissible load in a short time N.m	45	45	120	120	120	120	120	240	240	240	240	240	240	240

配置71ZY110-2430直流电机 (71ZY110-2430 DC Motor)

减速比 Reduction ratio	4	7	14	19	27	35	46	68	82	100	124	150	195	308
减速级数 Number of gear trains	1	1	2	2	2	2	2	3	3	3	3	3	3	3
减速器长度(L) Length(L) mm	56	56	75.5	75.5	75.5	75.5	75.5	95.5	95.5	95.5	95.5	95.5	95.5	95.5
空载转速 No-load speed r/min	750	429	214	158	111	86	65	44	37	30	24	20	15	10
额定转速 Rated speed r/min	650	371	186	136	96	74	56	38	32	26	21	17	13	8
额定转矩 Rated torque N.m	0.86	1.5	2.7	3.7	5.2	6.8	8.9	12	14	18	22	26	34	54
最大瞬间允许负载 Max. permissible load in a short time N.m	45	45	120	120	120	120	120	240	240	240	240	240	240	240