



金澄精密铸造

# 铸造品牌 追求卓越

Foundry brand

Pursuit of excellence

专注于铝合金压铸精密加工一体化服务

Dedicated to aluminum alloy die-casting precision machining integrated service

WWW.JCPESZ.COM

# 目录

CONTENTS

产品市场  
PRODUCT MARKET

4

生产工艺  
PRODUCTION PROCESS

3

技术研发

TECHNICAL RESEARCH AND  
DEVELOPMENT

2

企业概括  
ENTERPRISE OVERVIEW

1



1

# 企业概括

ENTERPRISE OVERVIEW

10101010 101 00 101010 101010101 011010 10 0

010 1 001010 0010101 01001 01010

00



Suzhou Jincheng Precision Casting Co., LTD., founded in 2006, is a high-tech enterprise specializing in die casting and precision machining of aluminum alloy parts for traditional/new energy vehicles, communications, photovoltaic/energy storage, rail transit and general industry.



苏州总部工厂  
Suzhou Headquarters Factory



苏州渭塘工厂  
Suzhou Weitang Factory



徐州工厂  
Xuzhou Factory

Xuzhou Jincheng Precision Manufacturing Co., Ltd. was wholly established in 2022, and has now formed three core production bases with Suzhou Headquarters factory, Suzhou Weitang Factory and Xuzhou High-tech Zone factory.

**3** Major production bases

research + production

With an annual output of 50,000 tons of aluminum alloy die-casting parts R & D, production and precision processing capacity, to achieve large-scale production effect.

Total assets size

**140** million dollar

Core production base  
核心生产基地

**200**  
thousand square meters

Plant area  
厂房面积

**18**  
Ten thousand square meters

Automatic cold chamber die casting island production line

**60** lines

Maximum die casting machine

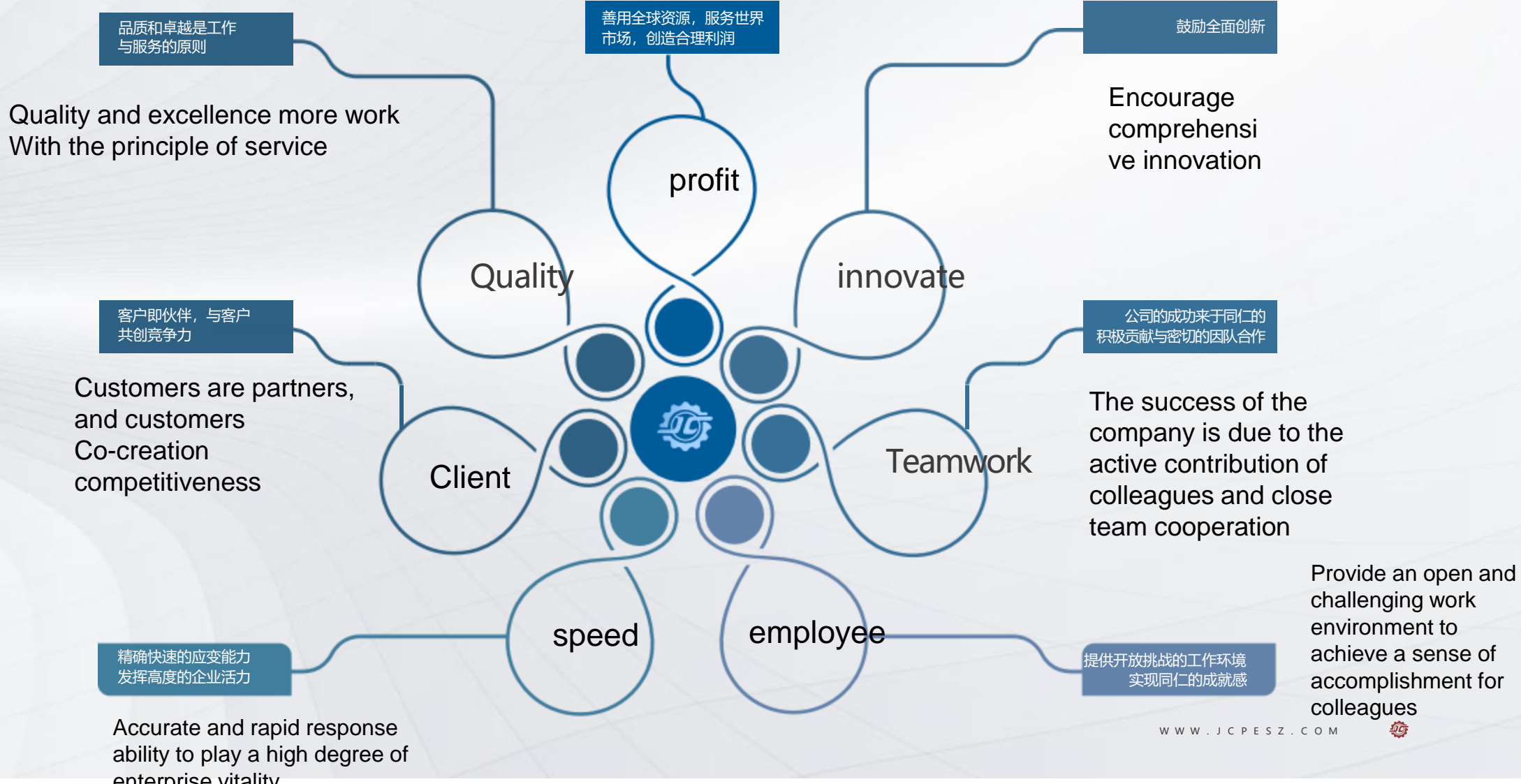
**4000** t

Precision machining center

**600** units

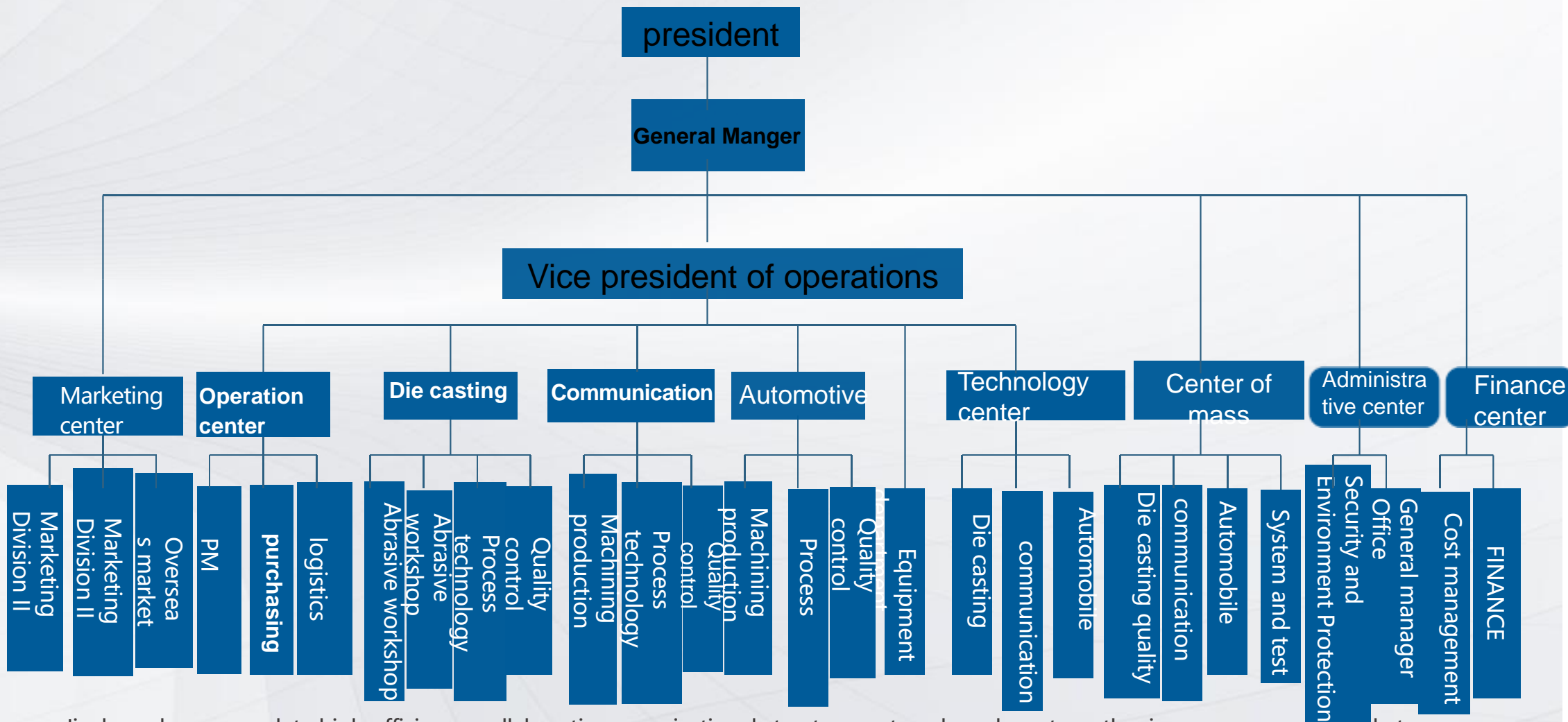


Make good use of global resources, serve the world market, and create reasonable profits



# 组织架构 ORGANIZATIONAL STRUCTURE

JINCHENG  
PRECISION DIE CASTING



Jincheng has a complete high-efficiency, collaborative organizational structure system, based on strengthening management, market-oriented, seeking the best combination of resources.



## 企业荣誉 CORPORATE HONORS

JINCHENG  
PRECISION DIE CASTING

In terms of quality, environment, management and safety, Jincheng Precision has passed the certification of relevant international and domestic authoritative certification bodies, which makes Jincheng Precision in quality, efficiency, service, environment, safety and other aspects of the trust of society and customers, so that Jincheng has become a socially respected responsible enterprise



Year 2022  
Outstanding  
Quality Award

Jiangsu  
Province  
postdoctoral  
Innovation  
Practice base

Quality die  
casting Award

China's foundry  
industry is the  
leader

Four-star  
integrity  
enterprise

Enterprise credit  
AAA level  
Credit enterprise

Jiangsu provincial  
enterprise  
technology center

Excellent  
supplier

China foundry  
industry top 100  
enterprises

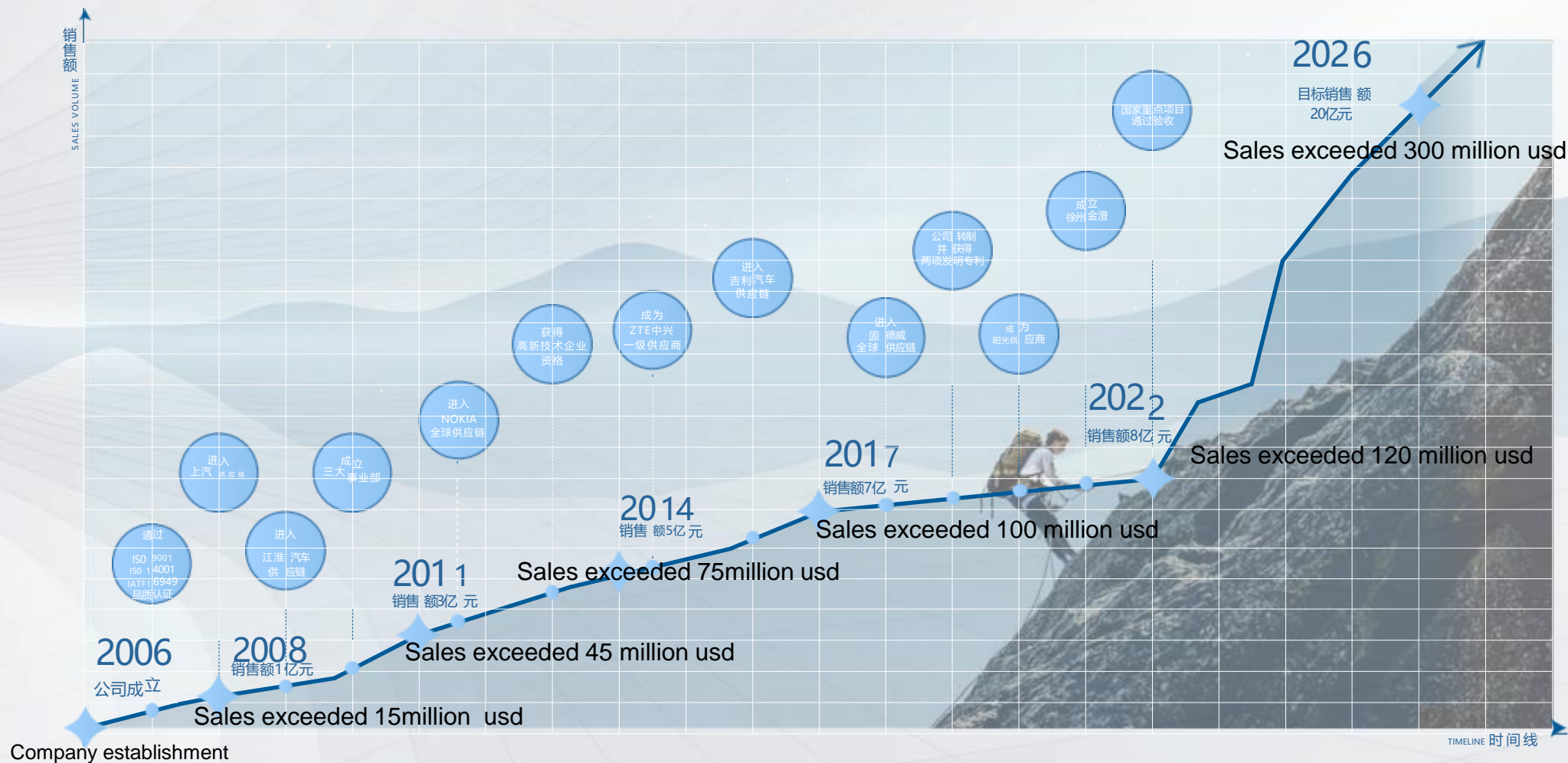
Tax  
contribution  
award





# 发展历程 DEVELOPMENT HISTORY

JINCHENG  
PRECISION DIE CASTING



2

# 技术研发

TECHNICAL RESEARCH AND  
DEVELOPMENT

10101010 101 00 101010 101010101 011010 10 0

010 1 001010 0010101 01001 01010

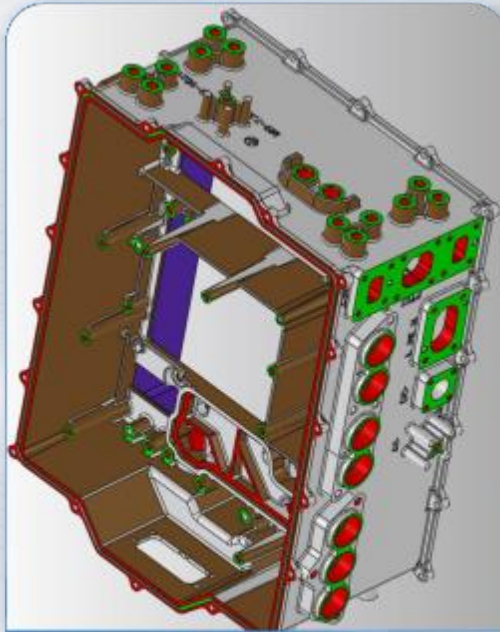
00



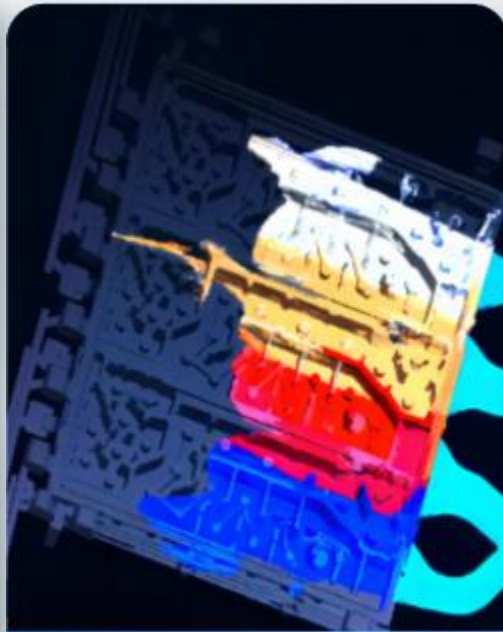
Jincheng Precision has the leading technology research and development center in the industry, and has been recognized as the Jiangsu Enterprise Technology Center, Suzhou Engineering Technology Center, and postdoctoral workstation. The company is the president of Suzhou Die casting Technology Association, with a number of die casting industry experts and mold professionals Engineers, the company has cooperated with a number of colleges and universities to carry out in-depth research and development in new materials and new processes of die casting, and obtained many achievements in innovation demonstration.

# 技术引领生产

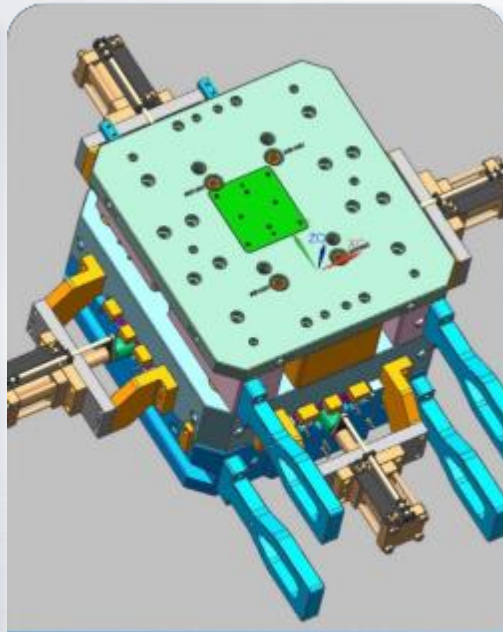
Technology Leads Production



**3D设计**  
3D Design



**模流分析**  
Mold Flow Analysis



**模具设计**  
Mold design



**压铸工艺**  
Die-Casting Process

The company leads the production with technology, and provides customers with a full range of pre-sales services in 3D design, mold flow analysis, mold design, die-casting process, etc., providing strong technical support for product development and mass production.



# 技术中心团队

Technical Center Team

产品开发

Product Development

模具开发

Mold Development

压铸工艺技术与新材料开发

Die-casting Technology And New Material Development

博士后工作站

Postdoctoral Workstation

Various types of technical personnel

**90** people

More than 20 years technical expert

**30** people

Invention and utility patents

**80** items

National key project

**1** items



In terms of quality management, Jincheng Precision has a strong management team, composed of more than dozens of quality engineers, senior engineers and each unit process quality control team of the company's quality center, through effective management to improve the quality of the company's products, win customer reputation.



## 主要检测设备一览表

### MAIN INSPECTION EQUIPMENTS

DESCRIPTION	MANUFACTURER	MODEL	QTY
精密投影仪 OPTICAL PROJECTOR	中国 CHINA		2
三坐标 CMM	意大利 ITALY	COORD3	14
	韩国 KOREA	DUKIN	
	德国 GERMANY	WENZEL	
		CARL ZEISS	
rosh x 光分析仪 ROHS ANALYZING MACHINE	中国 CHINA	EDX3000B	2
金相显微镜 METALLOGRAPHIC MICROSCOPE	中国 CHINA	NJF-1	3
布洛维硬度计 BRINELL HARDNESS RENTER	中国 CHINA	HBRVU-187.5	3
精密粗糙度检测仪 SURFACE ROUGHNESS TESTER	日本三丰 JAPAN (MITUTOYO)	178-923D	3
精密高度仪 HEIGHT GAUGE	瑞士 SWITZERLAND (TRIMOS)	V300+/600+	5
厚度测试仪 THICKNES TESTER	德国 GERMANY (FISCHER)	XDL-B	3
光谱仪 SPECTRAMETER	德国 GERMANY (OBLF SPEKTROMETRIE)	GS1000	3
X 光探伤仪 X RAY NDT TESTER	中国 CHINA	XG-1504T	3

The company has dozens of advanced testing equipment, testing capabilities fully meet product needs, effectively ensure product quality control. Since its establishment, the company has obtained:

**ISO9001:2015国际质量体系认证**

ISO9001:2015 International Quality System Certification

**ISO 14001:2015体系认证**

ISO 14001:2015 System Certification

**IATF16949:2016汽车行业质量体系体系认证**

IATF16949:2016 Automotive Industry Quality System Certification

The company's quality policy: pay attention to the production process/eliminate the bad process/grasp the accurate delivery time/meet customer requirements

WWW.JCPESZ.COM

弯





3

JINGCHENG

# 生产工艺

PRODUCTION PROCESS

10101010 101 00 101010 101010101 011010 10 0

010 1 001010 0010101 01001 01010

00



# 模具制造 MOLD MANUFACTURING

JINCHENG  
PRECISION DIE CASTING

Gantry CNC  
machining  
center



龙门数控加工中心

Electric  
spark



电火花

Vacuum quenching  
furnace



真空淬火炉



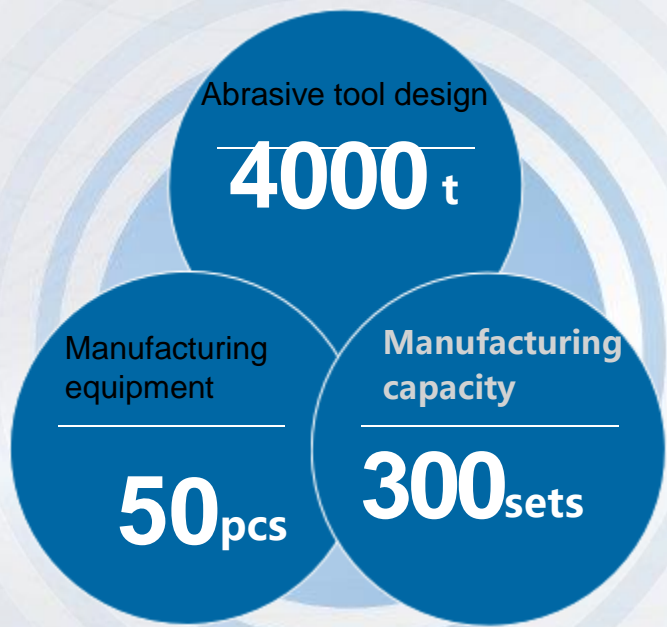
合模机



深孔钻

Closing machine

Deep hole drill



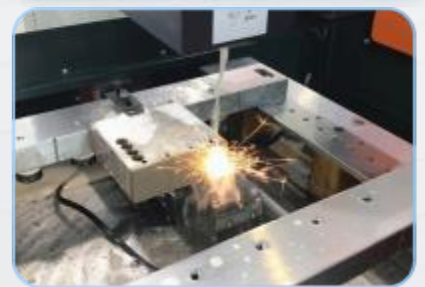
美国HAAS加工中心

HAAS  
machining  
center



龙门镗铣床

Longmen  
boring and  
milling  
machine



线切割

wire-cut



# 压铸制造 DIE-CASTING MANUFACTURING

JINCHENG  
PRECISION DIE CASTING



280-4000T 全自动压铸机

**60**台

铝合金压铸零部件年产能

**50000**吨

The intelligent die casting island is composed of automatic soup feeding machine, automatic spray machine, automatic takeout machine, automatic transmission belt, high pressure point cooling machine, ultra-high vacuum machine, die temperature machine and cutting and shaping equipment, and is equipped with a number of efficient and energy-saving automatic central furnace and machine edge holding furnace to achieve intelligent and flexible production program



# 压铸车间主要设备一览表

## DIE CASTING EQUIPMENTS LIST

NAME	SPECIFICATION	UNIT	AMOUNT	REMARK
压铸机 DIE CASTING MACHINE	280T、350T、420T	units 台	27	包括给汤机、保温炉、伺服喷雾机、取件机器人、喷雾机器人 INCLUDING HEAT PRESERVATION FURNACE,AUTOMATIC SOUP
	500T、560T、630T			
	650、800T、850T			
	1250T、1600T、1650T			
	2000T、2500T、2800T			
	3000T、3800T、4000T			
挤压机 EXTRUDING MACHINE	350T	台	2	
低压铸造机 LOW PRESSURE CASTING MACHINE		台	1	
中央熔炉 CENTRAL FURNACE	3T	台	2	
	2T	台	5	
倾倒式干锅熔炉 TOOL TEMP CONTROL UNIT		台	12	
高压点冷机 HIGH PRESSURE POINT COOLER		台	40	
超高真空机 ULTRA HIGH VACUUM MACHINE		台	40	
模温机 MOLD TEMPERATURE MACHINE		台	40	
切边整形设备 TRIMMING AND SHAPING EQUIPMENT		台	9	
抛丸机 SHOT BLASTING MACHINE		台	10	
喷砂机 SAND BLASTING MACHINE			7	



CNC 数控加工中心 

# 600余台

卧式加工中心	进口品牌	国产品牌
<b>60</b> 台	<b>138</b> 台	<b>500</b> 余台



## 机加工设备一览表

CNC MACHINING EQUIPMENTS LIST

NAME	MANUFACTURER	SPECIFICATIONS	UNIT	AMOUNT
数控加工中心 CNC MACHINING CENTER	美国哈斯 HAAS(USA)	VF-3	台	2
	韩国起亚 KIA(KOREA)	VX380	台	5
		VX400	台	10
		VX500	台	10
		日本法纳克	T141-EE	台
	台湾捷力	HV4.5A/V4	台	20
	台湾伽玛	LV-1000	台	20
	日本马扎克 (卧加)	HCN5000	台	27
	日本德玛吉森精机	NHC5000	台	2
	日本兄弟机 (BROTHER)	DH166 (卧加)	台	21
			HDE-63 (卧加)	台
		立式	台	60
	群志	双立轴高效立式加工中心	台	32
		HV8 (卧加)	台	1
	配天四面体卧式加工中心	TH800	台	8
		TH1210	台	2
	台群		台	160
	其他品牌		台	200
数控车床 CNC TURNING MACHINES			台	18
搅拌摩擦焊 FRICTION STIR WELDING			台	7



# 表面处理

SURFACE TREATMENT

Jincheng has a strategic cooperation of spray plating supporting enterprises, experienced and well-equipped, complete testing equipment. Can meet high quality requirements.



Automatic infiltration line



Spray shop



Electroplating and dusting testing equipment





GP12洁净车间

GP12 clean workshop



检测工作站

Detection workstation



气密性检测

Air tightness test



氦气检测

Helium detection



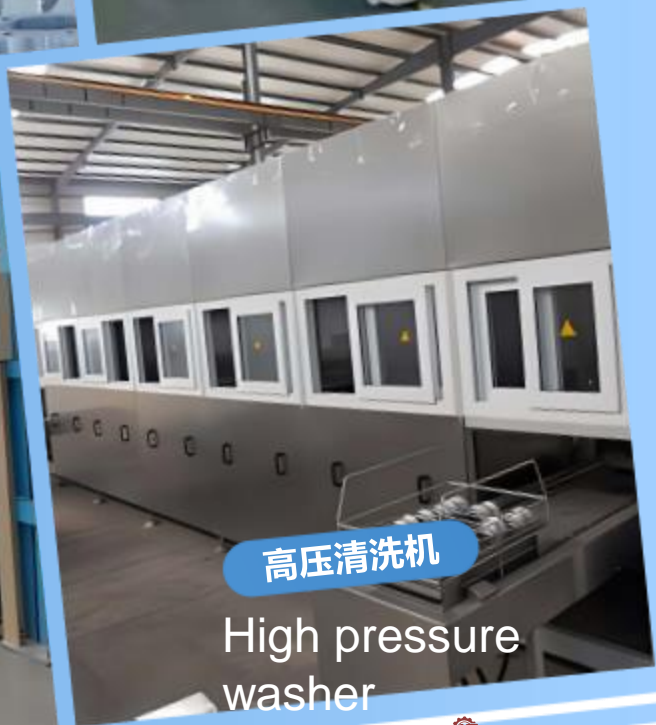
Automatic infiltration line

自动浸渗线



Ultrasonic cleaning line

超声波清洗线



高压清洗机

High pressure washer

# 配套设施

SUPPORTING FACILITIES





4

JINGCHENG

# 产品市场

PRODUCT MARKET

10101010 101 00 101010 101010101 011010 10 0

010 1 001010 0010101 01001 01010

00

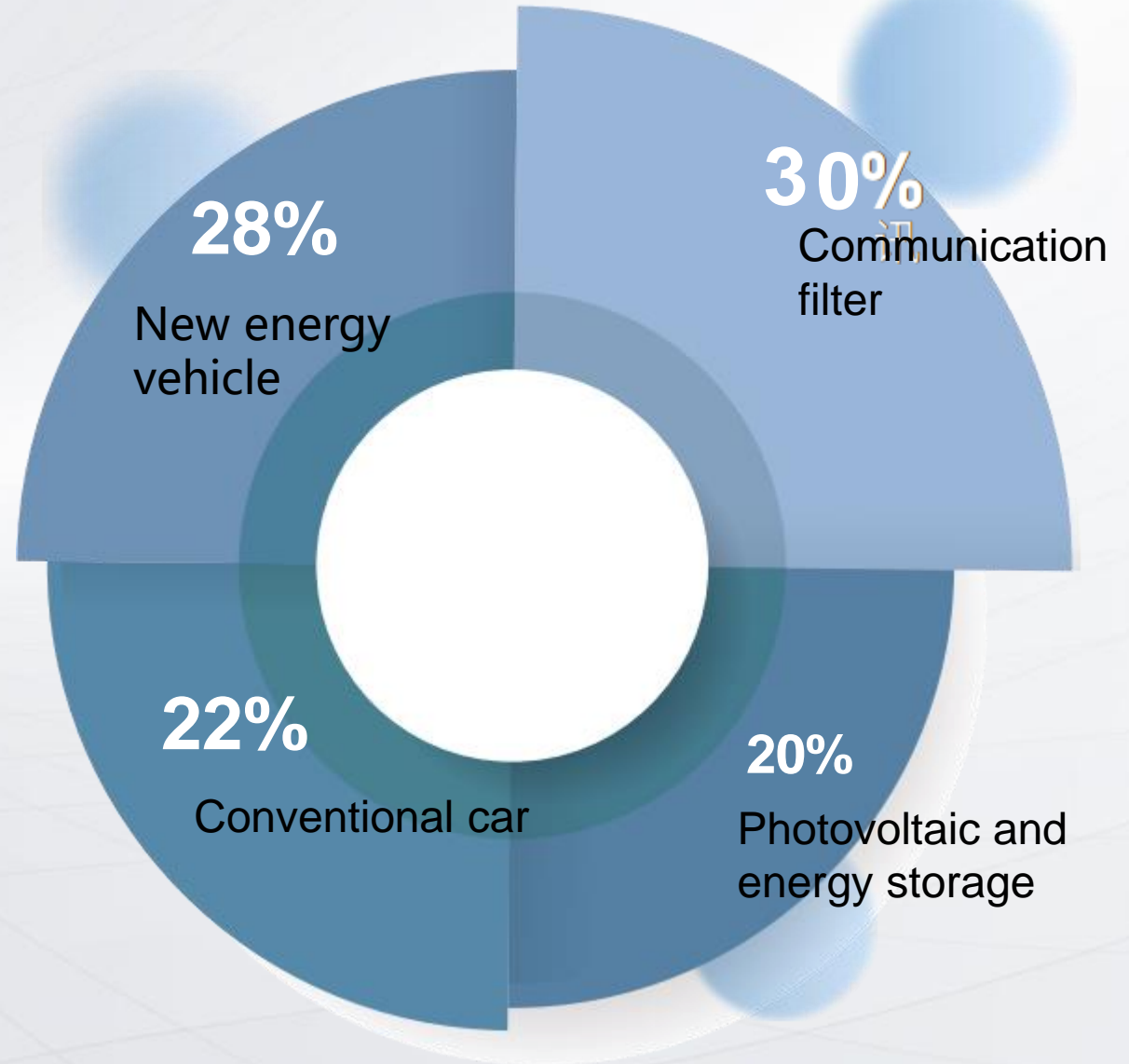
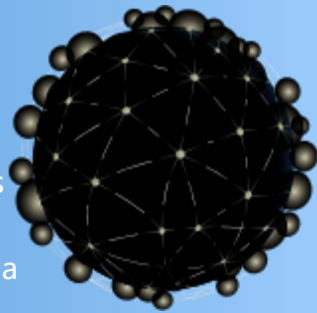


---

Many products of Jincheng won the "Gold Medal" honor in China's casting industry evaluation.

---

R&d and production of new products have been highly recognized by the market, products are exported to Asia and Europe and the United States market.





# 传统汽车零部件

TRADITIONAL AUTO PARTS

# MOTIVE PARTS

01

发动机板块  
ENGINE PLATE



1.8L 汽车发动机汽缸体



V6 汽车发动机缸体



1.8L 汽车发动机曲轴箱体



传统汽车水泵及附件支架



2.4L 汽车发动机汽缸体



2.4L 汽车发动机曲轴箱体



进气歧管气管



平衡轴壳体总成



发动机后桥盖板



四驱后盖



# 传统汽车零部件

## TRADITIONAL AUTO PARTS

# MOTIVE PARTS

01

发动机板块  
ENGINE PLATE

发动机板块  
engine plate

1.8L汽车发动机汽缸体

1.8L Car Engine Cylinder Block

V6汽车发动机缸体

V6 Car Engine Block

1.8L汽车发动机曲轴箱体

1.8L car engine crankcase

传统汽车水泵及附件支架

automotive water pump

2.4L汽车发动机气缸体

2.4L Car Engine Cylinder Block

2.4L汽车发动机曲轴箱体

2.4L car engine crankcase

进气歧管气管

intake manifold

平衡轴壳体总成

Balancer shaft bearing housing

发动机后桥盖板

motor rear axle cover

四驱后盖

4WD rear cover



# 传统汽车零部件 TRADITIONAL AUTO PARTS

02

变速箱板块  
TRANSMISSION PLATE



4AT 自动变速箱壳体



齿轮室壳体



重卡变速箱中壳体



无级变速器壳体



DCT 变速箱壳体



DCT 离合器壳体



M5B 轴承箱壳体



客车变速箱壳体



变速箱壳体



CVT 变速器壳体



# 传统汽车零部件

## TRADITIONAL AUTO PARTS

02

变速箱板块  
TRANSMISSION PLATE

### 变速箱板块 transmission plate

4AT自动变速箱壳体

4AT Auto Transmission Housing

齿轮室壳体

gearbox housing

重卡变速箱中壳体

Heavy Duty Truck Transmission housing

无级变速器壳体

Continuously Variable Transmission Housing  
(CVT housing)

DCT变速箱壳体

DCT Transmission housing/Dual-Clutch Transmission  
housing

DCT离合器壳体

DCT clutch housing

M5B 轴承箱壳体

M5B bearing box housing

客车变速箱壳体

Passenger car Transmission housing

变速箱壳体

Transmission housing

CVT 变速器壳体

CVT Transmission Housing



# 传统汽车零部件 TRADITIONAL AUTO PARTS

03

悬挂系统板块  
SUSPENSION SYSTEM PLATE



发动机右悬挂支架



减震支架



发动机左悬挂支架



减震支架



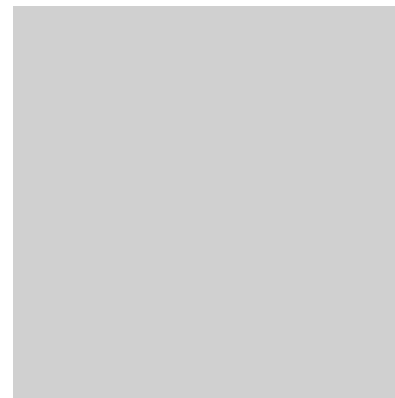
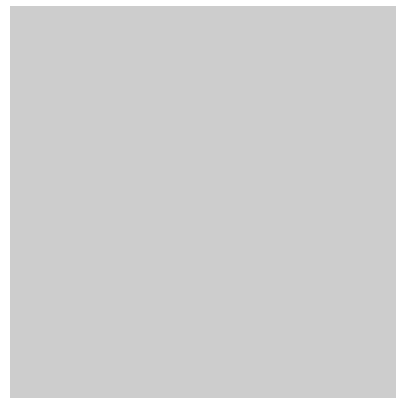
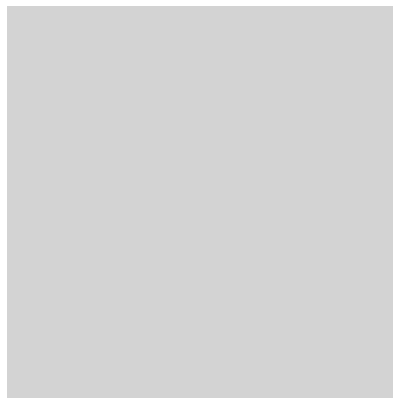
油底壳隔垫



支架



压缩机支架



悬挂系统模块  
suspension system plate

发动机右悬挂支架

Engine right suspension bracket

减震支架

Shock absorber bracket

发动机左悬挂支架

Engine left suspension bracket

减震支架

rear shock absorber bracket

油底壳隔垫

Oil sump gasket

支架

bracket

压缩机支架

Compressor bracket

# 新能源汽车零部件

NEW ENERGY VEHICLE PARTS

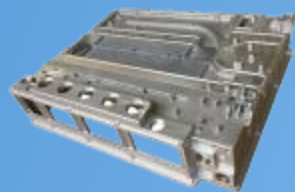
三电系统  
THREE-POWER SYSTEM



控制箱上盖



齿轮箱前壳



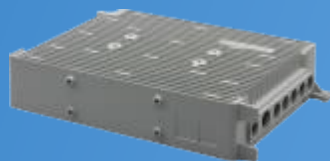
变频机箱组件



车用控制器



电机壳体



电源机箱



发动机上油底壳组件



汽车后端盖



减速器壳体



控制器箱体总成



# 新能源汽车零部件

## NEW ENERGY VEHICLE PARTS

三电系统  
THREE-POWER SYSTEM

三电系统  
three-power system

新能源汽车控制器是新能源车辆控制系统中的“大脑级”控制器  
它包括纯电动汽车整车控制器VCU(Vehicle control unit)和电机控制器

控制箱上盖

control box die casting

齿轮箱前壳

gearbox front housing

变频机箱组件

变频机箱前壳

Automobile frequency conversion case housing

电机壳体

车用控制器

electric vehicle VCU controller housing

电机壳体

Electric Vehicle Motor Housing

电源机箱

power supply housing

发动机上油底壳组件

oil pan assembly

汽车后端盖

new energy vehicle motor rear end cover

减速器壳体

Electric vehicle retarder housing

控制器箱体总成

VCU controller assembly housing

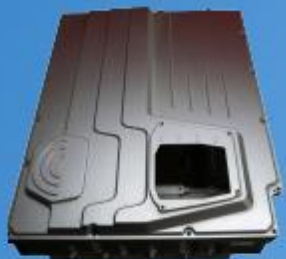




# 新能源汽车零部件

## NEW ENERGY VEHICLE PARTS

三电系统  
THREE-POWER SYSTEM



新能源汽车与车用控制器



新能源汽车悬挂支架



新能源汽车控制器 IGBT 水道



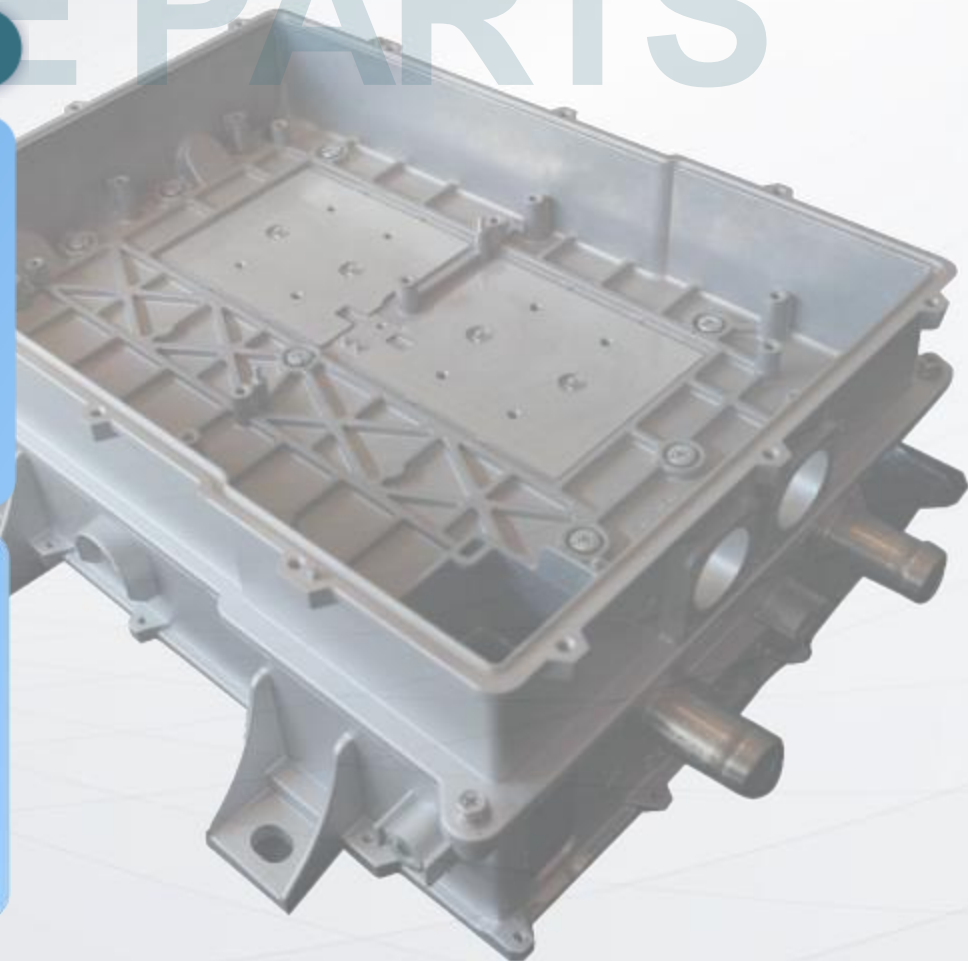
新能源汽车控制器外壳组件



新能源汽车控制器中盖板



新能源汽车控制器箱体



# 新能源汽车零部件

## NEW ENERGY VEHICLE PARTS

三电系统  
THREE-POWER SYSTEM

新能源汽车与车用控制器

electirc VCU controller housing

新能源汽车悬挂支架

Electric Vehicles Rear Motor Mount Bracket

新能源汽车控制器 IGBT 水道

electirc vehicle IGBT

新能源汽车控制器外壳组件

electirc vehicle VCU controller box housing

新能源汽车控制器中盖板

electirc vehicle VCU controller housing

新能源汽车控制器箱体

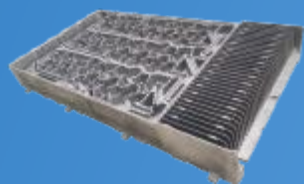
electirc vehicle VCU controller box housing



# COMMUNICATION PARTS

## 通信零部件产品

### COMMUNICATION PARTS PRODUCTS



通信滤波器 (3000T)



5G 滤波器机箱



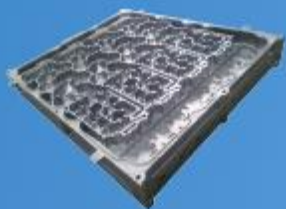
5G 结构件产品



5G 滤波器腔体



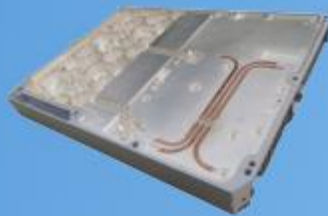
4.5G 散热器腔体



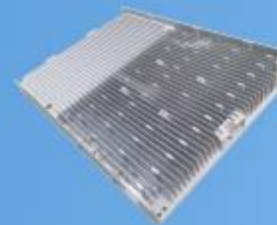
通信滤波器 (2000T)



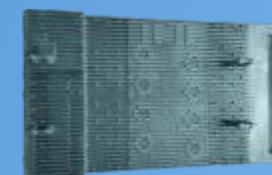
通信滤波器 (1600T)



通信滤波器 (1600T)



通信滤波器 (1600T)



5G 散热器腔体

# COMMUNICATION PARTS

## 通信零部件产品 COMMUNICATION PARTS PRODUCTS

通信滤波器（3000T）

5G滤波器机箱

5G结构件产品

5G滤波器腔体

4.5G 散热器腔体

通信滤波器（2000T）

通信滤波器（1600T）

通信滤波器（1600T）

通信滤波器（1600T）

5G 散热器腔体

5G communication Filter case housing

5G communication Filter housing

5G Filter Cavity housing

4.5G Radiator cavity

Communication filter(2000T)

Communication filter(1600T)

Communication filter(1600T)

Communication filter(1600T)

5G Filter Cavity housing

5G 滤波器机箱



# PHOTOVOLTAIC ENERGY STORAGE

## 光伏储能零部件产品

### PHOTOVOLTAIC ENERGY STORAGE COMPONENTS PRODUCTS



光伏机箱



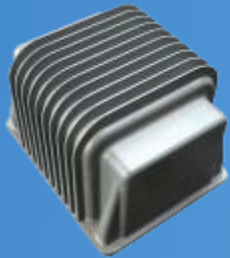
光伏电池包壳体



光伏逆变器机箱



新能源电控 (3000T)



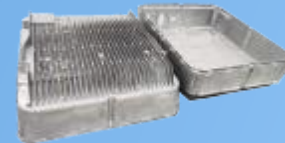
光伏电感器盒



光伏储能包机箱



光伏逆变器机箱



光伏逆变器壳体



光伏逆变器机箱

# PHOTOVOLTAIC ENERGY STORAGE

## 光伏储能零部件产品

### PHOTOVOLTAIC ENERGY STORAGE COMPONENTS PRODUCTS

光伏机箱

New energy photovoltaic housing parts

光伏电池包壳体

Photovoltaic Battery Packs housing

光伏逆变器机箱

Photovoltaic inverter housing

新能源电控（3000T）

new energy electric controller housing

光伏电感器盒

Photovoltaic inductor housing

光伏储能包机箱

Photovoltaic Energy Storage Packages housing

光伏逆变器机箱

Photovoltaic inverter box housing

光伏逆变器壳体

Photovoltaic inverter case housing

光伏逆变器机箱

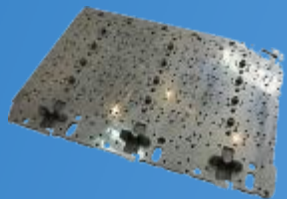
Photovoltaic inverter housing



# RAIL TRANSIT AND GENERAL PARTS

## 轨道交通与通用零部件产品

### RAIL TRANSIT AND GENERAL PARTS PRODUCTS



085329A



齿轮箱右壳体



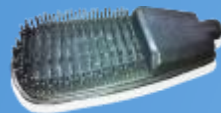
齿轮箱左壳体



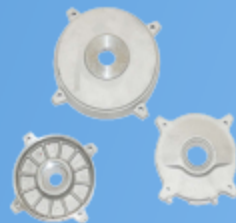
电机壳



无切削电机壳



灯罩



电机盖

# RAIL TRANSIT AND GENERAL PARTS

## 轨道交通与通用零部件产品

### RAIL TRANSIT AND GENERAL PARTS PRODUCTS

085329A

齿轮箱右壳体

齿轮箱左壳体

无切削电机壳

灯罩

电机盖

电机壳

085329A

Gearbox right housing

Gearbox left housing

electric motor housing  
aluminum motor housing

LED light cover

electric motor case housing

electric motor housing  
aluminum motor housing

灯罩





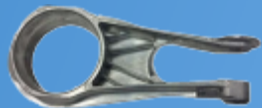
# RAIL TRANSIT AND GENERAL PARTS

## 轨道交通与通用零部件产品

### RAIL TRANSIT AND GENERAL PARTS PRODUCTS



V07473



V07479



V07699



洋马设备 Y745



割草机左壳体



割草机右壳体



新品 JC-02



# RAIL TRANSIT AND GENERAL PARTS

## 轨道交通与通用零部件产品

### RAIL TRANSIT AND GENERAL PARTS PRODUCTS

V07473

V07473

V07479

V07479

V07699

V07699

割草机左壳体

Mower left housing

割草机右壳体

Mower right housing

新品JC-02

NEW PRODUCT JC-2

洋马设备Y745

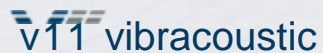
Yanmar equipment Y745

010250002.1-3



# 服务客户 SERVING CUSTOMERS

JINCHENG  
PRECISION DIE CASTING



# THANKS

感谢观看



金澄精密铸造

Add: No.40 Zhentai Road, Taiping  
Industrial Park, Xiangcheng District, Suzhou

Web : [jybusiness.en.alibaba.com](http://jybusiness.en.alibaba.com)

Tel :86-15062693928  
E-MAIL: [amanda@jcpsz.com](mailto:amanda@jcpsz.com)