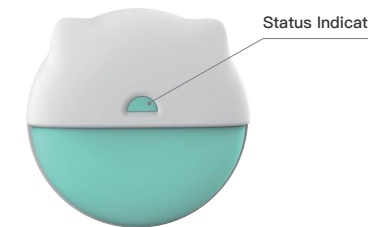


The Smart Pet Tracker

is designed for monitoring and protecting pet. GPS, Wi-Fi, Bluetooth, and cellular technologies work together to allow you to find and protect your pet, giving you the peace of mind you've always needed. With this you can set custom safe zones for your pet. Also, the LED light to see your pet in the dark and will blink when lost.

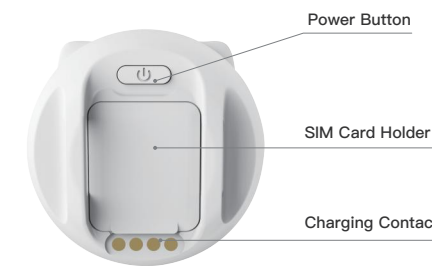
1 Getting to know your device

- Front



2

- Back



3 Charging Base

- Front



- The charging base does two things:
1. Charge your tracker.
2. Equipped with home beacon for indoor location. And maximizes tracker battery life when your pet is nearby.

4

- Back



- It should always be plugged in, powered on, and placed within the boundary of your pet zone where your pets spend most of their time.

5 Accessories

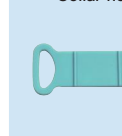
USB cable



User manual



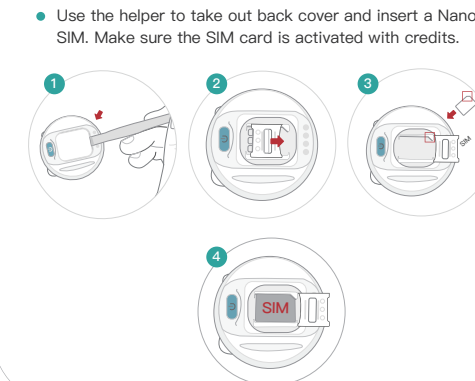
Collar holder



Sim card helper

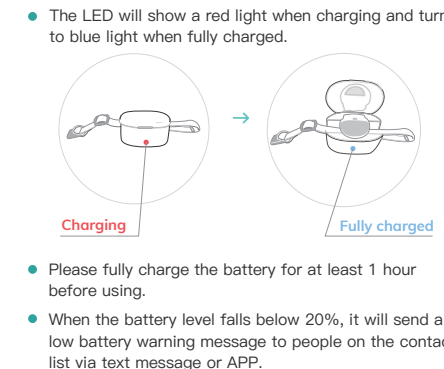


6 Insert SIM Card



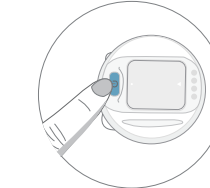
- Use the helper to take out back cover and insert a Nano SIM. Make sure the SIM card is activated with credits.

7 Charging your device



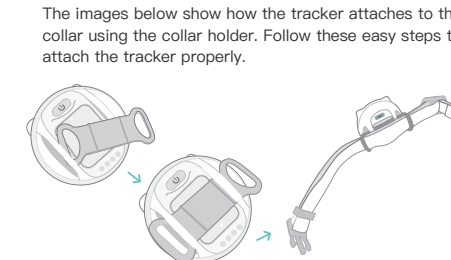
- The LED will show a red light when charging and turns to blue light when fully charged.
- Please fully charge the battery for at least 1 hour before using.
- When the battery level falls below 20%, it will send a low battery warning message to people on the contact list via text message or APP.

8 Switching on and off



- To turn ON- When the device is placed in the charging base, the device will automatically turn on. To conserve battery life, the LED won't flash except when performing the actions.
- To turn OFF- Press and hold the power button for 10 seconds. The LED will flash rapidly for a few seconds and then LED off.

9 Attach the tracker to your pet's collar



- Attaching the collar holder to the tracker.
- Attach the tracker to the cat collar.

Now you only need **3 steps** to complete.

Step 1 Download Mobile App



iOS Download

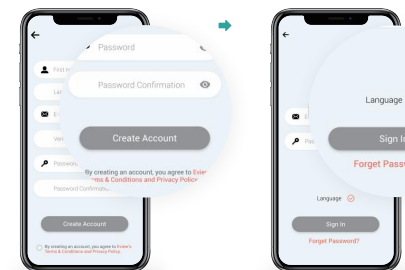


Andorid Download

- Or search katchu from IOS APP store or Google play.

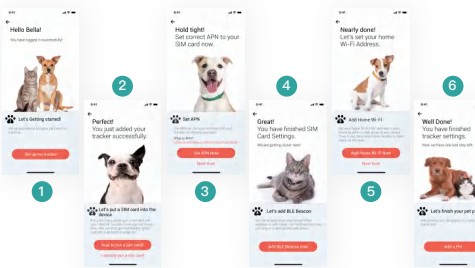
www.eviewgps.com

Step 2 : Set Up an Account



- Enter your name, email and create a password.
- A confirmation email will be sent to the email address you used to sign up.

Step 3 :Follow the instructions of the APP and complete the operation step by step.



After setting up the device and adding a pet, the Katchu APP will guide you through other functions step by step.

- Now, You can start using your tracker.

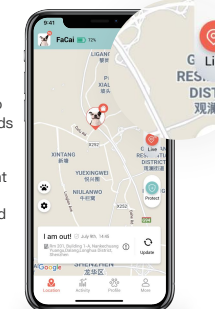
Looking for Cat-Live Tracking

Don't panic if your pet get lost.

- Open KatchU APP.
- click Live Tracking button to get updates every 10 seconds over a 10 minutes.

If you still haven't found your cat after 10 minutes, you can click Living Tracking button again and start another tracking session.

- Please note the Living Tracking mode consumes a lot of battery power, Normally the pet tracker takes a new location every 15 minutes whilst your pet is out and about.

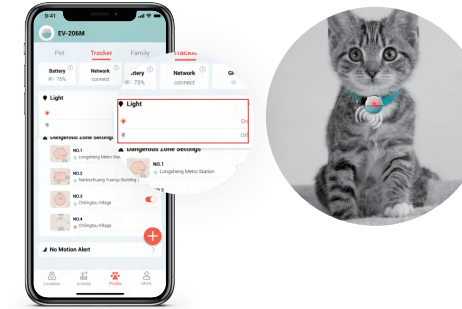


Home Wi-Fi and BLE Beacon



- The home Wi-Fi and BLE beacons provide at home or out of home information in addition to optimizing tracker's battery life. Beside this, you will instantly receive alerts when your cat leaves

Light Control



- Turn on the light to catch your cat in the dark. The red light is flashing every second.

LED Meanings

Different colours and time intervals indicate that the tracker is in different modes.

- Blue blinks twice: The tracker is connected to the network.
- Steady red light: The tracker is charging.
- Steady blue light: The tracker is fully charged.
- Blue, once every 10 seconds: The cat is outside.
- Red, once every 10 seconds: The battery is running low.

Waterproof



- The tracker is 100% waterproof (up to 2 meters depth, 1 hour) , As a result, the tracker is perfectly suitable for water-loving cat, of course, can be used in the rain.

General Specifications

- Dimension: 36mm*17mm
- Weight: 19g / 0.67oz / 0.041lb
- Battery: Rechargeable, 3.7V, 240mAh
- Charging voltage: 5V DC
- Battery life: 2-8 days.
- Waterproof: IPX8

The Smart Cat Tracker

